

1997

---

*Leading Health Indicators for California*

*Center for Health Statistics  
Health Information and Strategic Planning  
California Department of Health Services  
Sacramento, California  
May 1999*

STATE OF CALIFORNIA  
Gray Davis, *Governor*

HEALTH AND HUMAN SERVICES AGENCY  
Grantland Johnson, *Secretary*

---

# Leading Health Indicators for California

---

- *Life Expectancy*
- *Age-Adjusted Death Rates*
- *Infant Mortality*
- *Teen Births*
- *Low Birthweight Infants*
- *Early Prenatal Care*

*Prepared by  
Anthony Oreglia  
Center for Health Statistics*

George B. (Peter) Abbott, M.D., M.P.H.  
Acting Deputy Director  
Health Information and Strategic Planning

Michael L. Rodrian, Chief  
Center for Health Statistics

# Leading Health Indicators for California

## Table of Contents

Introduction .....	3
1997 Compared to 1996 .....	4
Data for 1995 – 1997 .....	5
Life Expectancy .....	6
Age-Adjusted Death Rates .....	7
Age-Adjusted Death Rates:	
Heart Disease .....	8
Cancer .....	9
Suicide .....	10
Homicide .....	11
HIV/AIDS .....	12
Infant Mortality .....	13
Teen Birth Rate .....	14
Low Birthweight Infants .....	15
Early Prenatal Care .....	16
Technical Notes .....	17

# Leading Health Indicators for California

## Introduction

This report presents the latest data (1997) on several leading health indicators for California – life expectancy, age-adjusted death rates, infant mortality, teen births, low birthweight infants, and early prenatal care.

Comparisons with 1996 data indicate that California improved on all of the indicators except infant mortality and low birthweight infants for which there was no change between 1996 and 1997.

For each leading health indicator, comparative data are presented for California's principal race/ethnic populations. Blacks had the worst outcomes for most of the leading indicators.

For life expectancy and age-adjusted death rates, comparative data are presented for males and females. Males had the worse outcomes on each indicator.

California did better than the United States on each indicator except age-adjusted death rates from homicide, teen birth rates, and early prenatal care.

# Leading Health Indicators for California

## 1997 compared to 1996

- *Life Expectancy:*

Males	improved
Females	<i>improved</i>

- *Age-Adjusted Death Rates:*

Males	<i>improved</i>
Females	<i>improved</i>

Asian/Pacific Is	<i>improved</i>
Blacks	<i>improved</i>
Hispanics	<i>improved</i>
Whites	<i>improved</i>

Heart Disease	<i>improved</i>
Cancer	<i>improved</i>
Suicide	<i>improved</i>
Homicide	<i>improved</i>
HIV/AIDS	<i>improved</i>

- Infant Death Rate

	no change
--	-----------

- *Teen Birth Rate*

	<i>improved</i>
--	-----------------

- *Percent Low Birthweight Infants*

	<i>no change</i>
--	------------------

- *Percent of Mothers with 1<sup>st</sup> Trimester Prenatal Care*

	<i>improved</i>
--	-----------------

# Leading Health Indicators for California

• <i>Life Expectancy:</i>	<b>1997</b>	<b>1996</b>	<b>1995</b>
Males	75.57	74.9	74.1
Females	80.7	80.5	80.4
• <i>Age-Adjusted Death Rates:</i>			
Males	522.9	547.4	579.5
Females	338.5	344.0	347.1
Asian/Pacific Is	284.0	288.5	296.0
Blacks	673.6	716.1	741.3
Hispanics	325.2	338.6	348.5
Whites	440.2	452.6	470.7
Heart Disease	111.9	114.6	118.6
Cancer	111.3	112.2	116.1
Suicide	9.6	9.8	11.3
Homicide	9.3	10.2	12.3
HIV/AIDS	5.2	12.1	18.8
• Infant Death Rate	5.9	5.9	6.3
• Teen Birth Rate	56.7	61.6	67.2
• Percent Low Birthweight Infants	6.1%	6.1%	6.1%
• Percent of Mothers with 1 <sup>st</sup> Trimester Prenatal Care	81.8%	80.6%	79.0%

Life Expectancy: expected years of life at birth.

Age-Adjusted Death Rate: deaths per 100,000 standard population using direct method and the 1940 U.S. standard million population.

Infant Death Rate: infant deaths under one year old per 1,000 live births.

Teen Birth Rate: births to teens age 15-19 per 1,000 females age 15-19.

Percent Low Birthweight Infants: percent of live births weighing under 2,500 grams.

Percent of Mothers with 1<sup>st</sup> Trimester Prenatal Care: percent of all mothers with reported prenatal care who received their first visit during their first trimester of pregnancy.

All data are for California residents.

Asian/Pacific Islanders, Blacks and Whites are non-Hispanic.

Source: State of California, Department of Health Services, Birth and Death Records.

State of California, Department of Finance, Population Estimates/Projections, 1998.

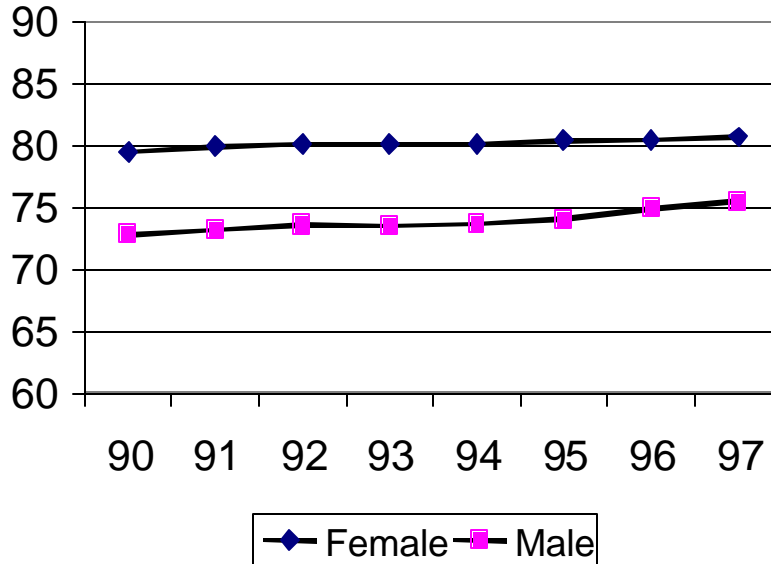
# Life Expectancy at Birth (LEB)

California's LEB in 1997 was 80.7 years for females and 75.5 years for males, both higher than in 1996.

California's LEB's were significantly higher than the U.S. LEB's of 79.2 years for females and 73.6 years for males.

There has been a significant upward trend in California's LEB's from 1990 to 1997.

Life Expectancy at Birth by California, 1990-97



1989-1991 Annual Average	
Race/Ethnicity of Decedent	Life Expectancy At Birth
Total	76.1
Asian/Pac Is	81.2
Black	69.2
Hispanic	80.2
White	75.9

Asian/Pacific Islanders had the longest life expectancy in 1989-1991 (81.2 years), followed closely by Hispanics (80.2 years). Blacks had the shortest life expectancy (69.2 years).

Notes: The latest life expectancy data by race/ethnicity are for the three-year period 1989-1991. All data are for California or U.S. residents. Decedents in the Asian/Pacific Islander, White and Black race/ethnicity groups are non-Hispanic. The total for race/ethnicity includes Asian/Pacific Islander, Black, Hispanic, White, and Native American.

Source: State of California, Department of Health Services, Birth and Death Records. State of California, Department of Finance, Population Estimates/Projections, 1998. California Department of Health Services, *California Life Expectancy: Abridged Life Tables For California and Los Angeles County, 1989-1991*. August 1993.

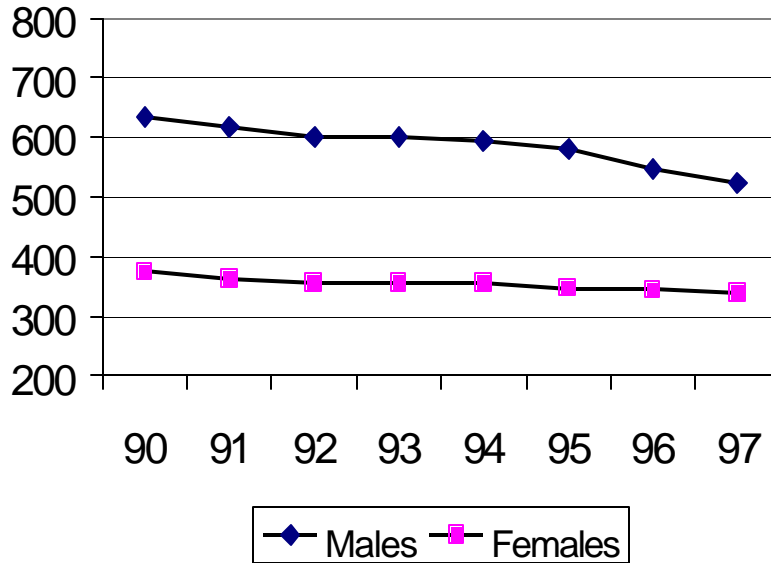
# Age-Adjusted Death Rates (ADR)

California's ADR's in 1997 were 522.9 for males and 338.5 for females, both lower than in 1996.

California's ADR's were significantly lower than the U.S. ADR's of 601.6 for males and 375.1 for females.

There has been a significant downward trend in California's ADR's from 1990 to 1997.

Age-Adjusted Death Rate by Sex  
California, 1990-97



Race/Ethnicity of Decedent	Age-Adjusted Death Rate
<b>Total</b>	424.0
<b>Asian/Pac Is</b>	284.0
<b>Black</b>	673.5
<b>Hispanic</b>	325.2
<b>White</b>	440.2

Blacks had the highest ADR (673.6), significantly higher than any other race/ethnic group. Asian/Pacific Islanders had the lowest ADR (284.0).

Notes: The age-adjusted death rate is the number of deaths per 100,000 population using the 1940 U.S. standard million as the standard population.  
 All data are for California or U.S. residents.  
 Decedents in the Asian/Pacific Islander, White and Black race/ethnicity groups are non-Hispanic. Whites include other and unknown race.  
 The total for race/ethnicity includes Asian/Pacific Islander, Black, Hispanic, White, and Native American.

Source: State of California, Department of Health Services, Death Records.  
 State of California, Department of Finance, Population Estimates/Projections, 1998.



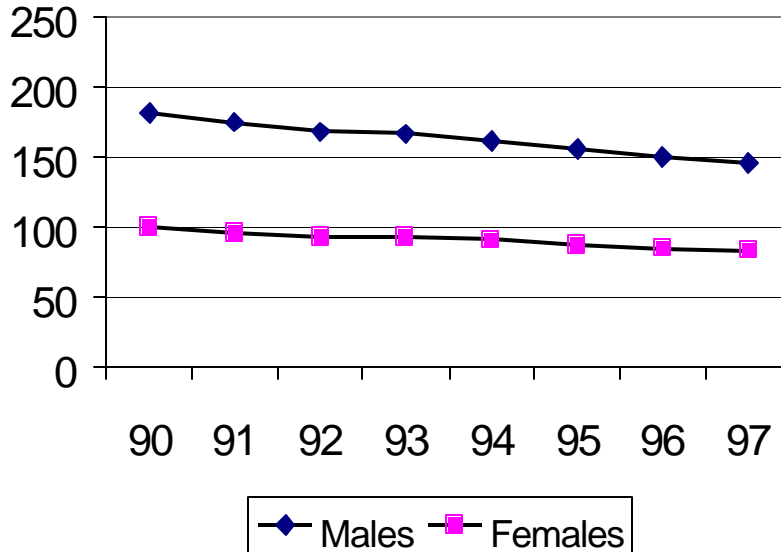
# Heart Disease Age-Adjusted Death Rates

California's Heart Disease ADR's in 1997 were 145.9 for males and 83.3 for females, both lower than in 1996.

California's Heart Disease ADR in 1997 of 111.9 was significantly lower than the U.S. rate of 129.9.

There has been a significant downward trend in California's ADR's from 1990 to 1997.

Heart Disease  
Age-Adjusted Death Rate by Sex  
California, 1990-97



Race/Ethnicity of Decedent	Age-Adjusted Death Rate
Total	111.9
Asian/Pac Is	68.5
Black	188.7
Hispanic	78.6
White	118.1

Blacks had the highest Heart Disease ADR (188.7), significantly higher than any other race/ethnic group. Asian/Pacific Islanders had the lowest Heart Disease ADR (68.5).

Notes: The age-adjusted death rate is the number of deaths per 100,000 population using the 1940 U.S. standard million as the standard population.  
All data are for California or U.S. residents.  
Decedents in the Asian/Pacific Islander, White and Black race/ethnicity groups are non-Hispanic. Whites include other and unknown race.  
The total for race/ethnicity includes Asian/Pacific Islander, Black, Hispanic, White, and Native American.  
Heart Disease deaths are ICD-9 codes: 390-398, 402, 404-429.

Source: State of California, Department of Health Services, Death Records.  
State of California, Department of Finance, Population Estimates/Projections, 1998.

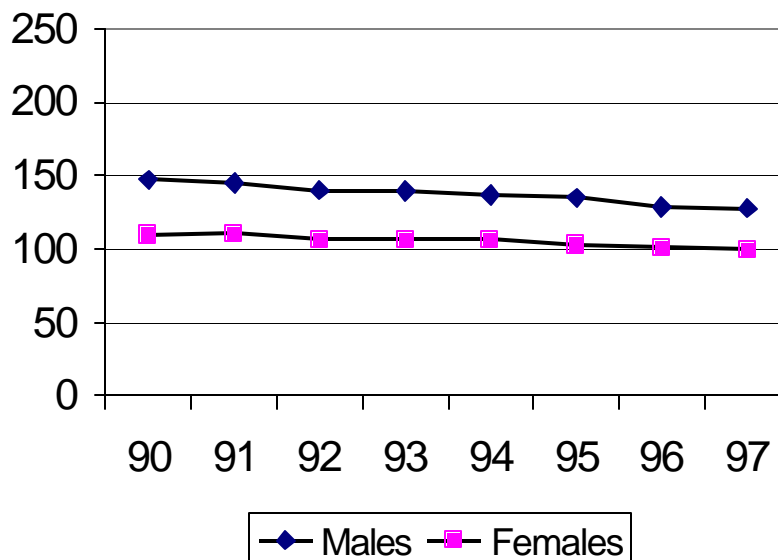
# Cancer Age-Adjusted Death Rates

California's Cancer ADR's in 1997 were 128.0 for males and 99.2 for females, both lower than in 1996.

California's Cancer ADR in 1997 of 111.3 was significantly lower than the U.S. rate of 125.0.

There has been a significant downward trend in California's ADR's from 1990 to 1997.

Cancer  
Age-Adjusted Death Rate by Sex  
California, 1990-97



Race/Ethnicity of Decedent	Age-Adjusted Death Rate
Total	111.3
Asian/Pac Is	80.8
Black	159.8
Hispanic	72.6
White	120.6

Blacks had the highest Cancer ADR (159.8), significantly higher than any other race/ethnic group. Hispanics had the lowest Cancer ADR (72.6).

Notes: The age-adjusted death rate is the number of deaths per 100,000 population using the 1940 U.S. standard million as the standard population.  
All data are for California or U.S. residents.  
Decedents in the Asian/Pacific Islander, White and Black race/ethnicity groups are non-Hispanic. Whites include other and unknown race.  
The total for race/ethnicity includes Asian/Pacific Islander, Black, Hispanic, White, and Native American.  
Cancer deaths are ICD-9 codes: 140-208.

Source: State of California, Department of Health Services, Death Records.  
State of California, Department of Finance, Population Estimates/Projections, 1998.

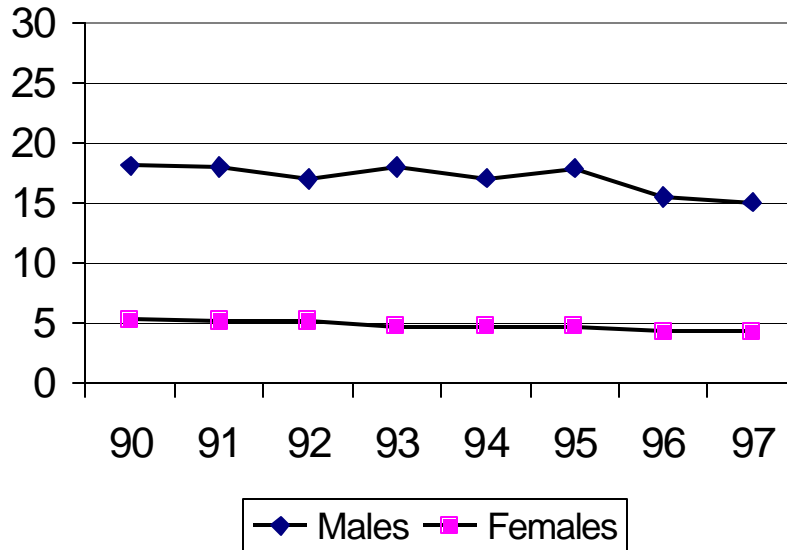
# Suicide Age-Adjusted Death Rates

California's Suicide ADR's in 1997 were 15.1 for males (a drop from 1996) and 4.3 for females (no change from 1996).

California's Suicide ADR in 1997 of 9.6 was significantly lower than the U.S. rate of 10.3.

There has been a significant downward trend in California's ADR's from 1990 to 1997.

Suicide  
Age-Adjusted Death Rate by Sex  
California, 1990-97



Race/Ethnicity of Decedent	Age-Adjusted Death Rate
<b>Total</b>	9.6
<b>Asian/Pac Is</b>	7.2
<b>Black</b>	6.4
<b>Hispanic</b>	5.0
<b>White</b>	12.4

Whites had the highest Suicide ADR (12.4), significantly higher than any other race/ethnic group. Hispanics had the lowest Suicide ADR (5.0).

Notes: The age-adjusted death rate is the number of deaths per 100,000 population using the 1940 U.S. standard million as the standard population.  
All data are for California or U.S. residents.  
Decedents in the Asian/Pacific Islander, White and Black race/ethnicity groups are non-Hispanic. Whites include other and unknown race.  
The total for race/ethnicity includes Asian/Pacific Islander, Black, Hispanic, White, and Native American.  
Suicide deaths are ICD-9 codes: E950-959.

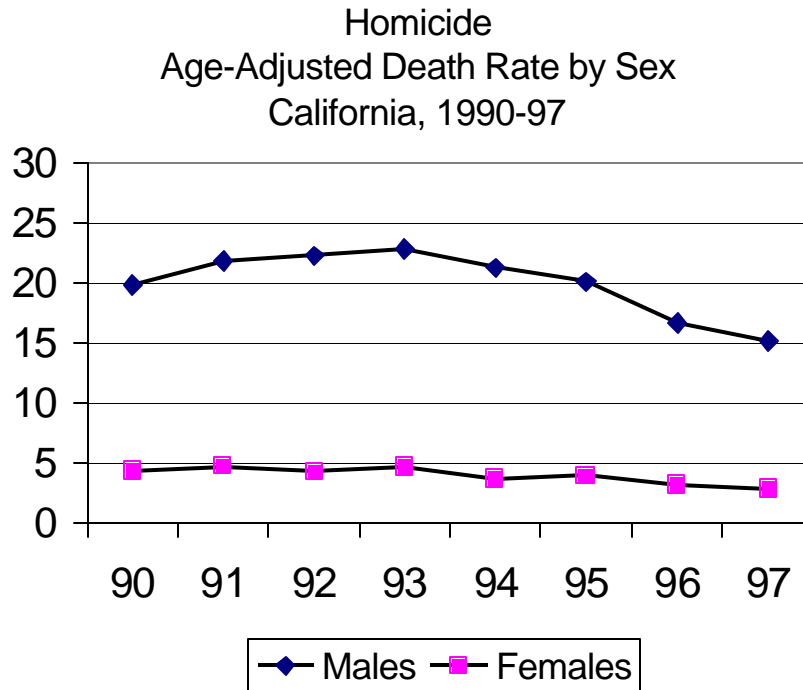
Source: State of California, Department of Health Services, Death Records.  
State of California, Department of Finance, Population Estimates/Projections, 1998.

# Homicide Age-Adjusted Death Rates

California's Homicide ADR's in 1997 were 15.2 for males and 2.9 for females, both lower than in 1996.

California's Homicide ADR in 1997 of 9.3 was significantly higher than the U.S. rate of 7.0.

There has been a significant downward trend in California's ADR's from 1990 to 1997 for females but not for males



Race/Ethnicity of Decedent	Age-Adjusted Death Rate
<b>Total</b>	9.3
<b>Asian/Pac Is</b>	5.1
<b>Black</b>	32.6
<b>Hispanic</b>	13.0
<b>White</b>	4.1

Blacks had the highest Homicide ADR (32.6), significantly higher than any other race/ethnic group. Whites had the lowest Homicide ADR (4.1).

Notes: The age-adjusted death rate is the number of deaths per 100,000 population using the 1940 U.S. standard million as the standard population.  
 All data are for California or U.S. residents.  
 Decedents in the Asian/Pacific Islander, White and Black race/ethnicity groups are non-Hispanic. Whites include other and unknown race.  
 The total for race/ethnicity includes Asian/Pacific Islander, Black, Hispanic, White, and Native American.  
 Homicide deaths are ICD-9 codes: E960-969.

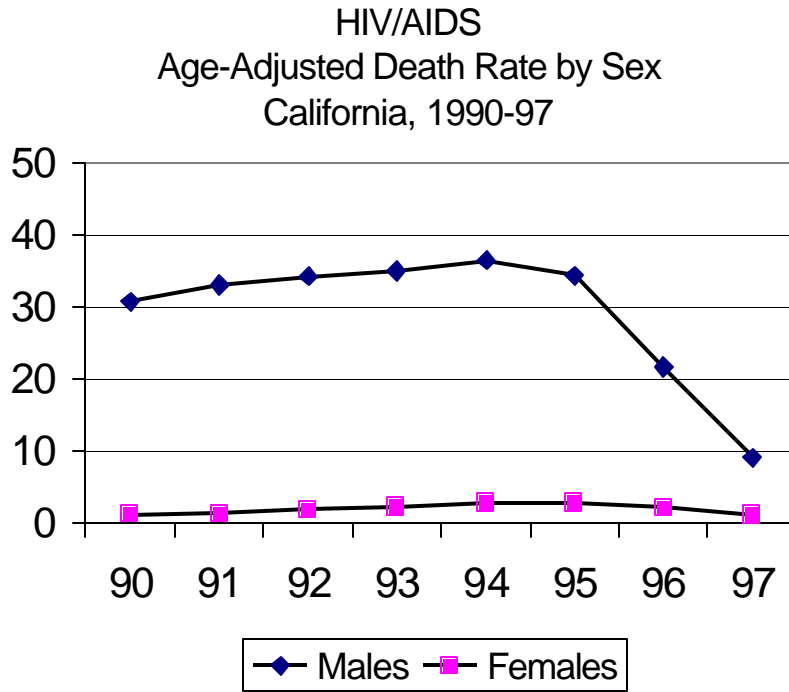
Source: State of California, Department of Health Services, Death Records.  
 State of California, Department of Finance, Population Estimates/Projections, 1998.

# HIV/AIDS Age-Adjusted Death Rates

California's HIV/AIDS ADR's in 1997 were 9.1 for males and 1.2 for females, both lower than in 1996.

California's HIV/AIDS ADR in 1997 of 5.2 was significantly lower than the U.S. rate of 5.9.

There has been a significant drop in California's ADR's from 1995 to 1997 for both males and females



Race/Ethnicity of Decedent	Age-Adjusted Death Rate
<b>Total</b>	5.2
<b>Asian/Pac Is</b>	0.8
<b>Black</b>	17.6
<b>Hispanic</b>	4.8
<b>White</b>	4.8

Blacks had the highest HIV/AIDS ADR (17.6), significantly higher than any other race/ethnic group. Asian/Pacific Islanders had the lowest HIV/AIDS ADR (0.8).

Notes: The age-adjusted death rate is the number of deaths per 100,000 population using the 1940 U.S. standard million as the standard population.  
 All data are for California or U.S. residents.  
 Decedents in the Asian/Pacific Islander, White and Black race/ethnicity groups are non-Hispanic. Whites include other and unknown race.  
 The total for race/ethnicity includes Asian/Pacific Islander, Black, Hispanic, White, and Native American.  
 HIV/AIDS deaths are ICD-9 codes: 042-044.

Source: State of California, Department of Health Services, Death Records.  
 State of California, Department of Finance, Population Estimates/Projections, 1998.

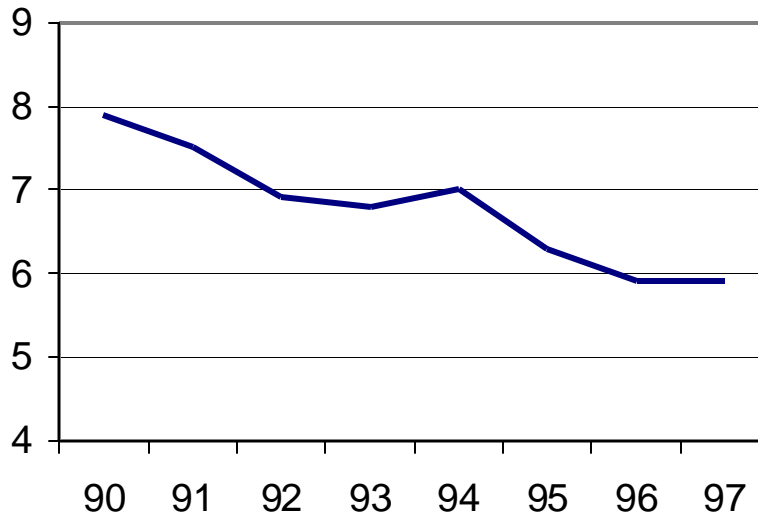
# Infant Mortality

California's infant death rate in 1997 was 5.9, the same as in 1996.

California's infant death rate was significantly lower than the U.S. rate of 7.1.

There has been a significant downward trend in California's infant death rate from 1990 to 1997.

Infant Death Rate  
California, 1990-97



Race/Ethnicity of Mother	Infant Deaths	Live Births	Infant Death Rate
<b>Total</b>	3,091	524,174	5.9
<b>Asian/Pac Is</b>	227	56,634	4.0
<b>Black</b>	475	35,957	13.2
<b>Hispanic</b>	1,396	248,795	5.6
<b>White</b>	981	177,347	5.5

Blacks had the highest infant death rate (13.2), significantly higher than any other race/ethnic group. Whites had the lowest infant death rate (5.5).

Notes: The infant death rate is the number of infant deaths under one year of age per 1,000 live births.  
All data are for California or U.S. residents.  
Mothers in the White and Black race/ethnicity groups are non-Hispanic.  
The total for race/ethnicity includes White, Black, Hispanic, Asian/Pacific Islander, Native American, other, and unknown race.

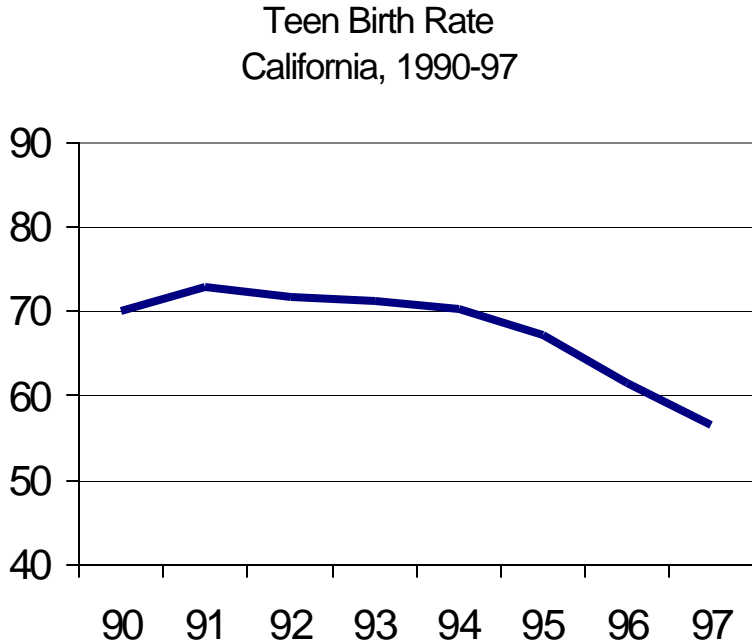
Source: State of California, Department of Health Services, Birth and Death Records.

# Teen Birth Rate

California's teen birth rate in 1997 was 56.7, a drop from 61.6 in 1996.

California's teen birth rate was significantly higher than the U.S rate of 52.9

There has been a significant downward trend in California's teen birth rate from 1990 to 1997.



Race/Ethnicity Of Mother	Teen Births	Females Age 15-19	Teen Birth Rate
<b>Total</b>	59,851	1,054,795	56.7
<b>Amer Indian</b>	501	7,252	69.1
<b>Asian/Pacific Is</b>	2,713	125,406	21.6
<b>Black</b>	6,293	84,379	74.6
<b>Hispanic</b>	37,769	364,893	103.5
<b>White</b>	12,575	472,865	26.6

Hispanics had the highest teen birth rate (103.5), significantly higher than any other race/ethnic group. Asian/Pacific Islanders had the lowest teen birth rate (21.6).

Notes: The teen birth rate is the number of births among females aged 15-19 per 1,000 females age 15-19 in the population.  
 All data are for California or U.S. residents.  
 Mothers in the American Indian, Asian/Pacific Islander, Black, and White groups are non-Hispanic; American Indian includes Eskimo and Aleut. Whites include other and unknown race.

Source: State of California, Department of Health Services, Birth Records.  
 State of California, Department of Finance, Population Estimates/Projections, 1998.

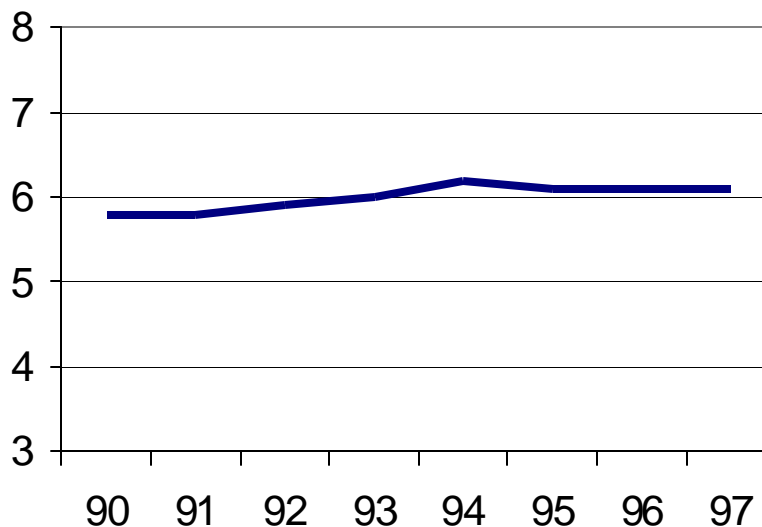
# Low Birthweight (LBW) Infants

California's percent LBW infants in 1997 was 6.1, the same as in 1996.

California's percent LBW infants was significantly lower than the U.S (7.5).

There has been a significant upward trend in California's percent LBW from 1990 to 1997.

Percent Low Birthweight Infants  
California, 1990-97



Race/Ethnicity of Mother	LBW Infants	Live Births	Percent LBW Infants
<b>Total</b>	32,232	524,174	6.1
<b>Amer Indian</b>	146	2,582	5.7
<b>Asian</b>	3,673	53,855	6.8
<b>Black</b>	4,356	35,957	12.1
<b>Hispanic</b>	13,879	248,795	5.6
<b>Pacific Islander</b>	173	2,779	6.2
<b>White</b>	9,770	177,347	5.5

Blacks had the highest percent LBW infants (12.1), significantly higher than any other race/ethnic group. Whites had the lowest percent LBW infants (5.5).

Notes: The percent low birthweight is the number of infants weighing less than 2,500 grams per 100 live births.  
 All data are for California or U.S. residents.  
 Mothers in the American Indian, Asian, Black, Pacific Islander, and White groups are non-Hispanic; American Indian includes Eskimo and Aleut.  
 The total for race/ethnicity includes other and unknown race.

Source: State of California, Department of Health Services, Birth Records.



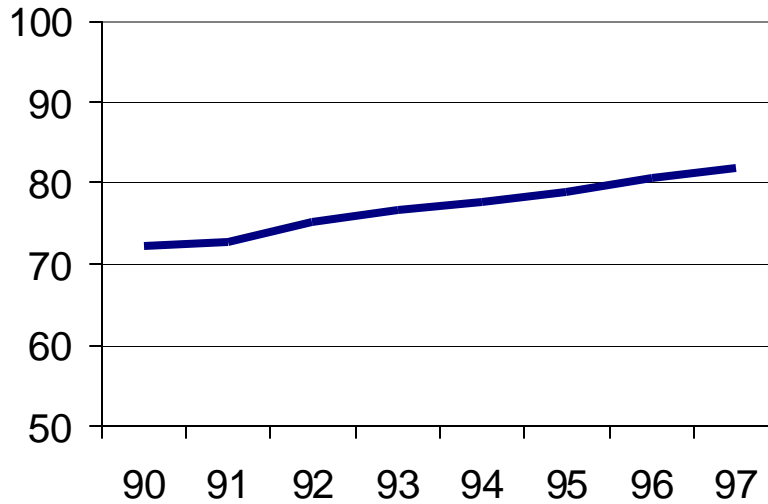
# Early Prenatal Care (EPC)

California's percent EPC in 1997 was 81.8, the highest ever recorded.

California's percent EPC was slightly lower than the U.S (82.5).

There has been a significant upward trend in California's percent EPC from 1990 to 1997.

Percent Prenatal Care in 1st Trimester  
California, 1990-97



Race/Ethnicity of Mother	Prenatal Care in 1 <sup>st</sup> Trim.	Births With Pre-natal Care	Percent Early Pre-Natal Care
<b>Total</b>	423,640	517,948	81.8
<b>Amer Indian</b>	1,801	2,539	70.9
<b>Asian</b>	45,344	53,263	85.1
<b>Black</b>	27,834	35,422	78.6
<b>Hispanic</b>	189,830	245,417	77.3
<b>Pacific Islander</b>	1,796	2,750	65.3
<b>White</b>	154,741	175,949	87.9

Whites had the highest percent EPC (87.9), followed closely by Asians (85.1). Pacific Islanders had the lowest percent EPC (65.3).

Notes: Early prenatal care (EPC) is defined as the percent of mothers who received their first prenatal care visit during their first trimester of pregnancy. Unknown prenatal care is excluded.

All data are for California or U.S. residents.

Mothers in the American Indian, Asian, Black, Pacific Islander, and White groups are non-Hispanic; American Indian includes Eskimo and Aleut.

The total for race/ethnicity includes other and unknown race.

Source: State of California Department of Health Services Birth Records

# Leading Health Indicators for California

## Technical Notes

As used in this report, the term “significantly” higher or lower refers to statistical significance at the 95 percent confidence level of the difference between two independent rates or the slope of a least squares regression line.

The race/ethnic groups included in the analyses of indicators for death rates were limited to four groups – Asian/Pacific Islanders, Blacks, Hispanics, and Whites. Asian/Pacific Islanders, Blacks, and Whites were non-Hispanic. Whites included other and unknown races. American Indians were not included in the analyses due to the underreporting of American Indians on death certificates (i.e., many American Indians are incorrectly recorded as “White”).

The most recent population *estimates* from the California Department of Finance were used for data years 1990-1996; the most recent population *projections* were used for data year 1997.

Data presented in this report for the United States were obtained from National Center for Health Statistics, *Births and Deaths: Preliminary Data for 1997*, National Vital Statistics Reports, Vol. 47, No. 4, October 7, 1998. DHHS Publication No. (PHS) 99-1120. Centers for Disease Control and Prevention.