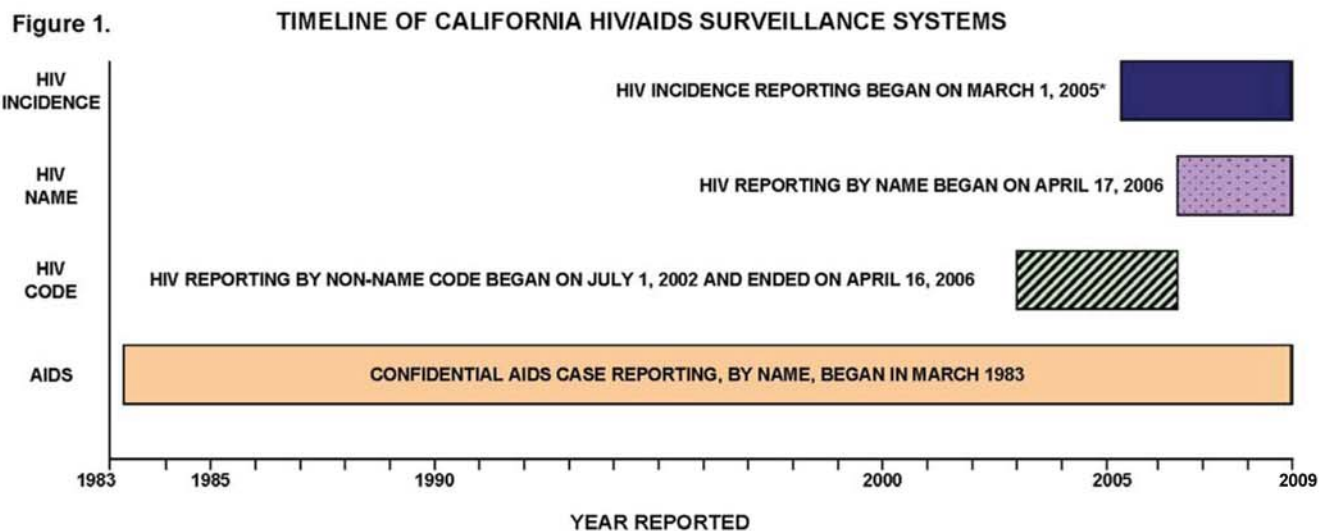


HIV/AIDS SURVEILLANCE IN CALIFORNIA

Over the years, surveillance of HIV/AIDS has evolved to adapt to changes in the HIV/AIDS epidemic and advances in diagnosis and treatment. In the beginning of the epidemic, surveillance systems across the country only reported AIDS cases. California surveillance later expanded due to increased understanding of the etiology and transmission of AIDS to include HIV reporting (see Figure 1 and Figure 2).

- Confidential AIDS case reporting, by name, began in March 1983
- HIV reporting was first implemented on July 1, 2002, by non-name code
- HIV reporting by name began on April 17, 2006
- HIV Incidence Surveillance reporting began on March 1, 2005



* Date reflects approval of the California area protocol and the beginning of data collection.

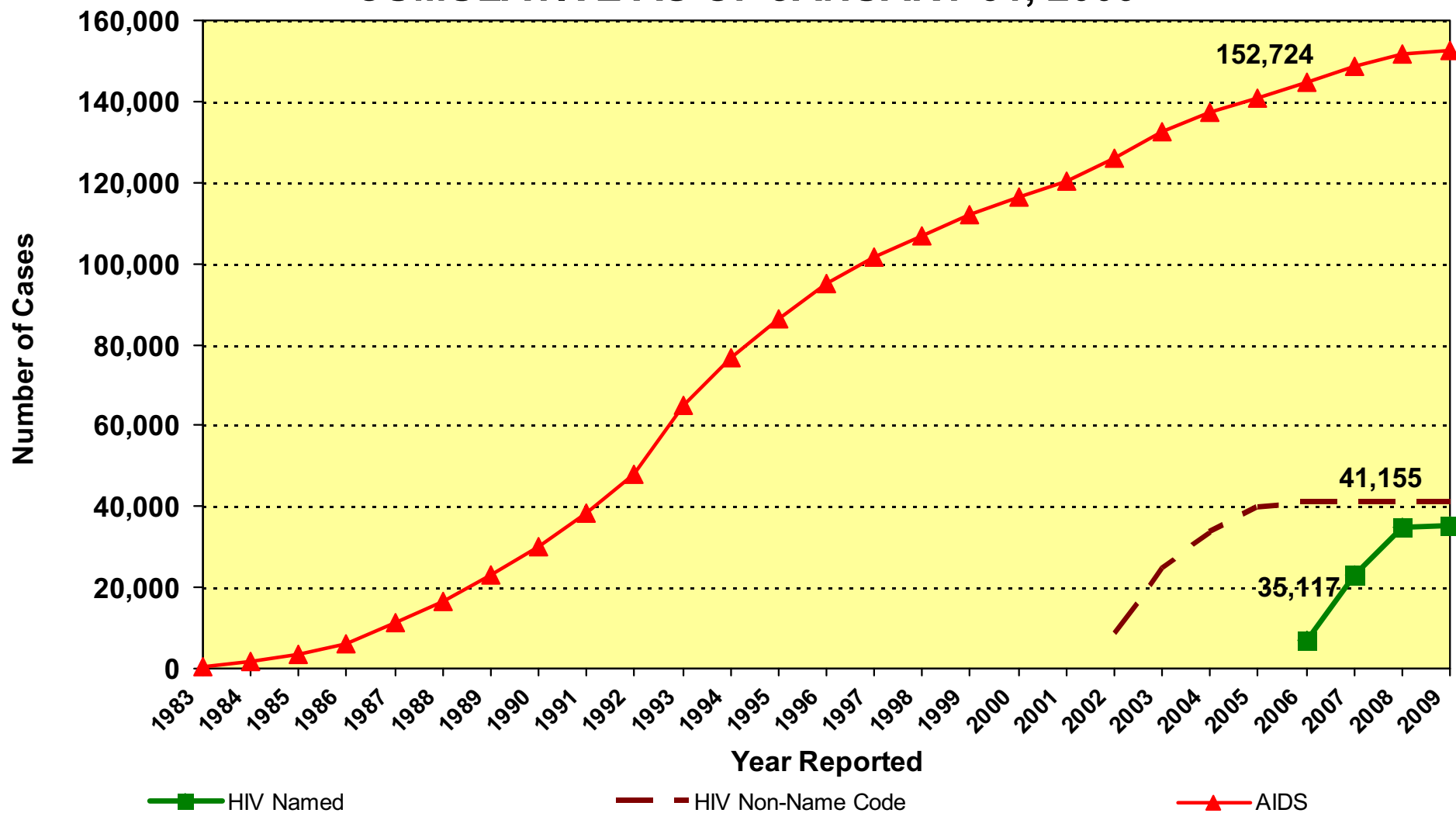
In California and the rest of the United States, HIV infections and AIDS diagnoses are reported through a combination of passive and active surveillance. Passive surveillance is conducted through state required reporting of HIV and AIDS cases by health care providers and reporting of HIV-positive test results from laboratories to Local Health Departments (LHDs). Active surveillance is accomplished through routine visits by LHD staff to hospitals, physician offices, laboratories, counseling and testing (C&T) clinics, and outpatient clinics to ensure completeness, timeliness, and accuracy of reported data. In California and other states, HIV/AIDS surveillance has historically relied heavily upon local health department staff who perform:

- active case surveillance
- on-site chart reviews
- case report completion

To improve timeliness and completeness of reporting and ensure prompt identification and response to emerging problems in the field, California Department of Public Health, Center for Infectious Diseases, Office of AIDS (OA) supports a decentralized reporting system where HIV and AIDS case reports are identified through passive and active surveillance efforts coordinated by California's 61 LHDs. HIV/AIDS surveillance case data, reported to local jurisdictions by health care providers and laboratories, is then sent to OA's HIV/AIDS Case Registry Section. OA's HIV/AIDS Case Registry Section then submits electronic HIV/AIDS case reports, without personal identifiers, to CDC.

Figure 2.

CALIFORNIA HIV/AIDS SURVEILLANCE SYSTEMS CUMULATIVE AS OF JANUARY 31, 2009



AIDS reporting began in March 1983.

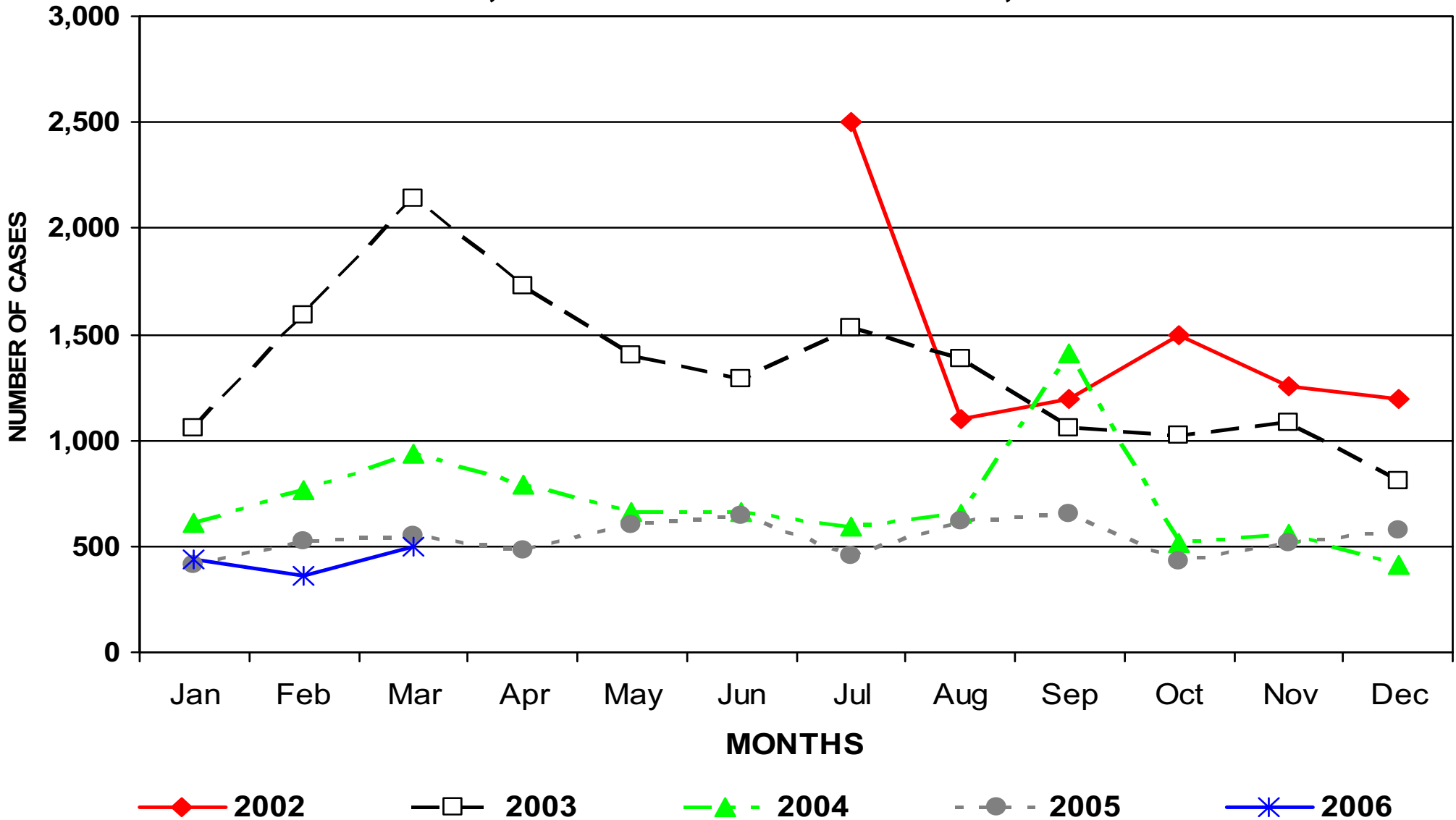
HIV case totals through March 2006 represent HIV cases reported by Non-Name Code. Beginning April 2006, HIV case total are based on HIV cases reported by Name. Due to reporting system differences, HIV cases reported by Non-Name code and Name cannot be combined for unduplicated case counts.

Source: California Department of Public Health, Office of AIDS, HIV/AIDS Case Registry, data as of January 31, 2009.

For more information, call the HIV/AIDS Case Registry Section at (916) 449-5866.



CALIFORNIA HIV NON-NAME-CODE-BASED CASES BY MONTH AND YEAR REPORTED JULY 1, 2002 THROUGH MARCH 31, 2006

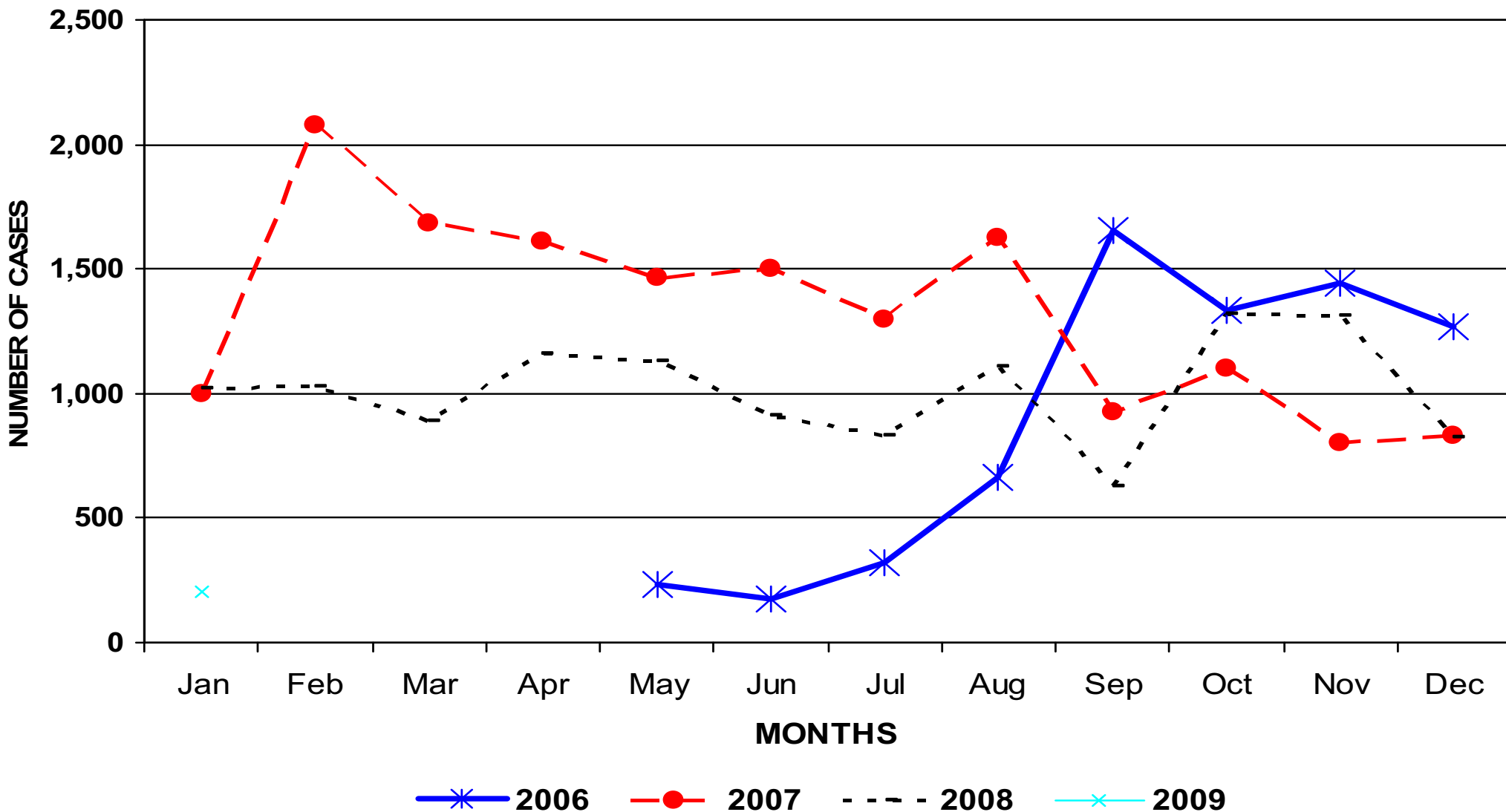


HIV case totals through March 2006 represent HIV cases reported by Non-Name Code. Beginning April 2006, HIV case total are based on HIV cases reported by Name. Due to reporting system differences, HIV cases reported by Non-Name code and Name cannot be combined for unduplicated case counts.

Source: California Department of Public Health, Office of AIDS, HIV/AIDS Case Registry, data as of March 31, 2006. For more information, call the HIV/AIDS Case Registry Section at (916) 449-5866.



CALIFORNIA HIV NAME-BASED CASES BY MONTH AND YEAR REPORTED APRIL 17, 2006 THROUGH JANUARY 31, 2009



HIV named reporting began in April 2006.

HIV case totals which were reported from July 2002 through March 2006 represent HIV cases reported by Non-Name Code. Due to reporting system differences, HIV cases reported by Non-Name code and Name cannot be combined for unduplicated case counts.

Source: California Department of Public Health, Office of AIDS, HIV/AIDS Case Registry, data as of January 31, 2009.

For more information, call the HIV/AIDS Case Registry Section at (916) 449-5866.





**CALIFORNIA HIV SURVEILLANCE REPORT
CUMULATIVE CASES AS OF January 31, 2009**

1. Gender*	Adult/Adolescent**		Pediatric**		Total	
	Cases (%)	Deaths (%)	Cases (%)	Deaths (%)	Cases (%)	Deaths (%)
Male	29906 (86)	816 (3)	137 (43)	2 (1)	30043 (86)	818 (3)
Female	4558 (13)	165 (4)	178 (57)	9 (5)	4736 (13)	174 (4)
Transgendered	338 (1)	9 (3)	0 (0)	0 (0)	338 (1)	9 (3)
Unknown	0 (0)	0 (0)	0 (0)	0 (0)	0 (0)	0 (0)
Total	34802 (100)	990 (3)	315 (100)	11 (3)	35117 (100)	1001 (3)

2. Age**	Cases (%)	3. Race/Ethnicity	Adult/Adolescent**	Pediatric**	Total
			Cases (%)	Cases (%)	Cases (%)
Under 5	239 (1)	Hispanic - All Races	9682 (28)	144 (46)	9826 (28)
5-12	76 (0)	Not Hispanic - Am. Indian/Alaskan Native	171 (0)	1 (0)	172 (0)
13-19	840 (2)	Asian	989 (3)	7 (2)	996 (3)
20-29	9755 (28)	Black or African American	6525 (19)	95 (30)	6620 (19)
30-39	13060 (37)	Native Hawaiian/Pacific Is.	81 (0)	0 (0)	81 (0)
40-49	8054 (23)	White	16920 (49)	59 (19)	16979 (48)
Over 49	3093 (9)	Legacy Asian/Pacific Is.	88 (0)	1 (0)	89 (0)
Unknown	0 (0)	Multi-race	185 (1)	8 (3)	193 (1)
Total	35117 (100)	Unknown	161 (0)	0 (0)	161 (0)
		Total	34802 (100)	315 (100)	35117 (100)

4. Exposure Category***	Adult/Adolescent Transmission Modes**		Total (%)
	Males (%)	Females (%)	
Men who have sex with men	23173 (77)	0 (0)	23173 (67)
Injection drug use	1651 (5)	1033 (23)	2684 (8)
Men who have sex with men and inject drugs	2326 (8)	0 (0)	2326 (7)
Hemophilia/coagulation disorder	41 (0)	7 (0)	48 (0)
Heterosexual contact	895 (3)	2376 (52)	3271 (9)
Receipt of blood, components, or tissue	46 (0)	46 (1)	92 (0)
Risk not reported/Other	2106 (7)	1101 (24)	3207 (9)
Total	30238 (100)	4563 (100)	34801 (100)

	Pediatric Transmission Modes**		Total (%)
	Males (%)	Females (%)	
Hemophilia/coagulation disorder	6 (4)	1 (1)	7 (2)
Mother with/at risk for HIV infection	116 (84)	159 (89)	275 (87)
Receipt of blood, components, or tissue	9 (7)	9 (5)	18 (6)
Risk not reported/Other	7 (5)	9 (5)	16 (5)
Total	138 (100)	178 (100)	316 (100)

HIV reporting began in April 2006.

* Classification is based on the patient's sex as reported.

** Classification at time of HIV infection diagnosis if patient met the HIV case definition (otherwise age at first HIV report).

*** 1 patient was diagnosed with HIV infection as an adult but has evidence of being HIV infected as a child.

It is counted as an adult/adolescent case in tables 1, 2, and 3; and as a pediatric case in table 4.

Source: California Department of Public Health, Office of AIDS, HIV/AIDS Case Registry Section, data as of January 31, 2009. For more information, call the HIV/AIDS Case Registry Section at (916) 449-5866.



**CALIFORNIA HIV SURVEILLANCE REPORT
CUMULATIVE CASES AS OF JANUARY 31, 2009**

5. Reported Cases of HIV and Deaths by Half-Year of Diagnosis:

Half-Year of Diagnosis	Number of Cases	Number of Deaths	Percent of Deaths
-----	-----	-----	-----
Before 1990	1925	121	6%
1990 Jan -June	403	27	7%
July-Dec	152	15	10%
1991 Jan -June	386	27	7%
July-Dec	189	14	7%
1992 Jan -June	420	19	5%
July-Dec	216	13	6%
1993 Jan -June	406	20	5%
July-Dec	258	9	3%
1994 Jan -June	478	13	3%
July-Dec	305	15	5%
1995 Jan -June	584	23	4%
July-Dec	389	17	4%
1996 Jan -June	772	30	4%
July-Dec	651	20	3%
1997 Jan -June	868	22	3%
July-Dec	586	27	5%
1998 Jan -June	796	25	3%
July-Dec	598	16	3%
1999 Jan -June	826	23	3%
July-Dec	602	15	2%
2000 Jan -June	909	23	3%
July-Dec	696	24	3%
2001 Jan -June	984	33	3%
July-Dec	877	31	4%
2002 Jan -June	1064	28	3%
July-Dec	1190	43	4%
2003 Jan -June	1209	41	3%
July-Dec	989	46	5%
2004 Jan -June	1176	34	3%
July-Dec	1114	27	2%
2005 Jan -June	1237	31	3%
July-Dec	1195	16	1%
2006 Jan -June	1608	26	2%
July-Dec	2098	21	1%
2007 Jan -June	2141	27	1%
July-Dec	1833	14	1%
2008 Jan -June	1852	18	1%
July-Dec	1132	7	1%
2009 Jan	3	0	0%
-----	-----	-----	-----
Totals	35117	1001	3%

HIV reporting began in April 2006.

* Note: The number and percent of deaths are for the cases diagnosed within each 6-month period.

Source: California Department of Public Health, Office of AIDS, HIV/AIDS Case Registry Section, data as of January 31, 2009. For more information, call the HIV/AIDS Case Registry Section at (916) 449-5866.



**CALIFORNIA AIDS SURVEILLANCE REPORT
CUMULATIVE CASES AS OF JANUARY 31, 2009**

1. Gender*	Adult/Adolescent**		Pediatric**		Total	
	Cases (%)	Deaths (%)	Cases (%)	Deaths (%)	Cases (%)	Deaths (%)
Male	138014 (91)	79575 (58)	348 (52)	205 (59)	138362 (91)	79780 (58)
Female	13131 (9)	5743 (44)	318 (48)	193 (61)	13449 (9)	5936 (44)
Transgendered	913 (1)	337 (37)	0 (0)	0 (0)	913 (1)	337 (37)
Unknown	0 (0)	0 (0)	0 (0)	0 (0)	0 (0)	0 (0)
Total	152058 (100)	85655 (56)	666 (100)	398 (60)	152724 (100)	86053 (56)

2. Age**	Cases (%)	3. Race/Ethnicity	Adult/Adolescent**	Pediatric**	Total
			Cases (%)	Cases (%)	Cases (%)
Under 5	458 (0)	Hispanic - All Races	35583 (23)	250 (38)	35833 (23)
5-12	208 (0)	Not Hispanic - Am. Indian/Alaskan Native	690 (0)	6 (1)	696 (0)
13-19	657 (0)	Asian	969 (1)	1 (0)	970 (1)
20-29	23035 (15)	Black or African American	27140 (18)	209 (31)	27349 (18)
30-39	65241 (43)	Native Hawaiian/Pacific Is.	100 (0)	1 (0)	101 (0)
40-49	43352 (28)	White	84361 (55)	174 (26)	84535 (55)
Over 49	19773 (13)	Legacy Asian/Pacific Is.	2724 (2)	19 (3)	2743 (2)
Unknown	0 (0)	Multi-race	364 (0)	5 (1)	369 (0)
Total	152724 (100)	Total	152058 (100)	666 (100)	152724 (100)

4. Exposure Category***	Adult/Adolescent Transmission Modes**		Total (%)
	Males (%)	Females (%)	
Men who have sex with men	102178 (74)	0 (0)	102178 (67)
Injection drug use	11114 (8)	4485 (34)	15599 (10)
Men who have sex with men and inject drugs	14345 (10)	0 (0)	14345 (9)
Hemophilia/coagulation disorder	551 (0)	30 (0)	581 (0)
Heterosexual contact	3380 (2)	6184 (47)	9564 (6)
Receipt of blood, components, or tissue	997 (1)	752 (6)	1749 (1)
Risk not reported/Other	6245 (4)	1645 (13)	7890 (5)
Total	138810 (100)	13096 (100)	151906 (100)

	Pediatric Transmission Modes**		Total (%)
	Males (%)	Females (%)	
Hemophilia/coagulation disorder	72 (16)	3 (1)	75 (9)
Mother with/at risk for HIV infection	267 (60)	304 (81)	571 (70)
Receipt of blood, components, or tissue	96 (22)	57 (15)	153 (19)
Risk not reported/Other	9 (2)	10 (3)	19 (2)
Total	444 (100)	374 (100)	818 (100)

AIDS reporting began in March 1983.

* Classification is based on the patient's sex as reported.

** Classification at time of AIDS diagnosis if patient met the AIDS case definition (otherwise age at first HIV report).

*** 151 patients were diagnosed with AIDS as adults but have evidence of being HIV infected as children. They are counted as adult/adolescent cases in tables 1, 2, and 3; and as pediatric cases in table 4.

Source: California Department of Public Health, Office of AIDS, HIV/AIDS Case Registry Section, data as of January 31, 2009. For more information, call the HIV/AIDS Case Registry Section at (916) 449-5866.



**CALIFORNIA AIDS SURVEILLANCE REPORT
CUMULATIVE CASES AS OF JANUARY 31, 2009**

5. Reported Cases of AIDS and Deaths by Half-Year of Diagnosis:

Half-Year of Diagnosis -----	Number of Cases -----	Number of Deaths -----	Percent of Deaths -----
Before 1990	29841	28248	95%
1990 Jan -June	4557	4081	90%
July-Dec	4432	3980	90%
1991 Jan -June	5240	4528	86%
July-Dec	5730	4952	86%
1992 Jan -June	6201	5022	81%
July-Dec	6040	4767	79%
1993 Jan -June	6262	4526	72%
July-Dec	5452	3669	67%
1994 Jan -June	5529	3298	60%
July-Dec	4676	2589	55%
1995 Jan -June	5175	2399	46%
July-Dec	4345	1766	41%
1996 Jan -June	4231	1511	36%
July-Dec	3358	1153	34%
1997 Jan -June	3281	981	30%
July-Dec	2686	784	29%
1998 Jan -June	2678	749	28%
July-Dec	2454	661	27%
1999 Jan -June	2603	679	26%
July-Dec	2228	534	24%
2000 Jan -June	2378	520	22%
July-Dec	2160	498	23%
2001 Jan -June	2271	499	22%
July-Dec	2139	460	22%
2002 Jan -June	2367	418	18%
July-Dec	2294	399	17%
2003 Jan -June	2339	349	15%
July-Dec	2079	323	16%
2004 Jan -June	2143	298	14%
July-Dec	1846	258	14%
2005 Jan -June	1951	249	13%
July-Dec	1883	202	11%
2006 Jan -June	2043	187	9%
July-Dec	1770	138	8%
2007 Jan -June	1858	161	9%
July-Dec	1612	95	6%
2008 Jan -June	1670	99	6%
July-Dec	915	23	3%
2009 Jan	7	0	0%
----- Totals	----- 152724	----- 86053	----- 56%

AIDS reporting began in March 1983.

* Note: The number and percent of deaths are for the cases diagnosed within each 6-month period.

Source: California Department of Public Health, Office of AIDS, HIV/AIDS Case Registry Section, data as of January 31, 2009. For more information, call the HIV/AIDS Case Registry Section at (916) 449-5866.



HIV/AIDS CASES BY COUNTY IN CALIFORNIA CUMULATIVE AS OF JANUARY 31, 2009

COUNTY	HIV				AIDS				COUNTY	HIV				AIDS			
	Total Cases	Living Cases	Deceased		Total Cases	Living Cases	Deceased			Total Cases	Living Cases	Deceased		Total Cases	Living Cases	Deceased	
			Number	%			Number	%				Number	%			Number	%
Alameda	1,062	1,071	9	1	7,587	3,420	4,167	55	Orange	2,628	2,528	100	4	7,426	3,832	3,594	48
<i>Berkeley</i>	46	46	0	0	630	230	400	63	Placer	27	26	1	4	182	88	94	52
Alpine	0	0	0	0	0	0	0	0	Plumas	1	1	0	0	12	6	6	50
Amador	8	8	0	0	50	24	26	52	Riverside	1,217	1,198	19	2	5,621	3,197	2,424	43
Butte	74	69	5	7	272	131	141	52	Sacramento	1,022	1,011	11	1	3,704	1,685	2,019	55
Calaveras	4	4	0	0	20	9	11	55	San Benito	4	4	0	0	44	24	20	45
Colusa	1	1	0	0	13	1	12	92	San Bernardino	1,540	1,439	101	7	3,799	1,759	2,040	54
Contra Costa	556	534	22	4	2,816	1,104	1,712	61	San Diego	3,863	3,754	109	3	13,849	6,696	7,153	52
Del Norte	9	9	0	0	36	23	13	36	San Francisco	5,396	5,214	182	3	28,081	9,229	18,852	67
El Dorado	48	47	1	2	181	64	117	65	San Joaquin	379	377	2	1	1,225	632	593	48
Fresno	167	167	0	0	1,630	765	865	53	San Luis Obispo	134	134	0	0	593	314	279	47
Glenn	6	5	1	17	17	9	8	47	San Mateo	261	261	0	0	2,174	887	1,287	59
Humboldt	72	70	2	3	244	107	137	56	Santa Barbara	112	112	0	0	856	355	501	59
Imperial	55	54	1	2	211	123	88	42	Santa Clara	731	724	7	1	4,084	1,976	2,108	52
Inyo	2	2	0	0	15	8	7	47	Santa Cruz	132	131	1	1	619	272	347	56
Kern	523	515	8	2	1,879	1,234	645	34	Shasta	40	40	0	0	184	80	104	57
Kings	49	49	0	0	225	141	84	37	Sierra	1	1	0	0	4	0	4	100
Lake	16	15	1	6	151	64	87	58	Siskiyou	5	5	0	0	44	19	25	57
Lassen	6	5	1	17	59	36	23	39	Solano	286	281	5	2	1,586	829	757	48
Los Angeles	13,384	13,000	384	3	55,039	23,922	31,117	57	Sonoma	273	263	10	4	2,024	881	1,143	56
<i>Long Beach</i>	1,327	1,296	31	2	5,845	3,068	2,777	48	Stanislaus	124	122	2	2	746	377	369	49
<i>Pasadena</i>	115	113	2	2	770	283	487	63	Sutter	14	14	0	0	75	26	49	65
Madera	64	64	0	0	159	94	65	41	Tehama	12	10	2	17	36	21	15	42
Marin	208	205	3	1	1,633	662	971	59	Trinity	1	1	0	0	12	4	8	67
Mariposa	0	0	0	0	13	6	7	54	Tulare	38	35	3	8	331	138	193	58
Mendocino	23	20	3	13	209	81	128	61	Tuolumne	15	15	0	0	64	26	38	59
Merced	28	28	0	0	202	86	116	57	Ventura	246	244	2	1	1,074	485	589	55
Modoc	0	0	0	0	2	0	2	100	Yolo	32	31	1	3	227	102	125	55
Mono	0	0	0	0	5	2	3	60	Yuba	3	3	0	0	65	26	39	60
Monterey	123	123	0	0	945	431	514	54	Unknown	6	6	0	0	6	4	2	33
Napa	70	68	2	3	238	96	142	60									
Nevada	7	7	0	0	126	58	68	54									
TOTAL	35,117	34,116	1,001	3	152,724	66,671	86,053	56									

AIDS reporting began in March 1983. HIV reporting began in April 2006.

Source: California Department of Public Health, Office of AIDS, HIV/AIDS Case Registry Section, data as of January 31, 2009.

For more information, call the HIV/AIDS Case Registry Section at (916) 449-5866.



CALIFORNIA HIV/AIDS MONTHLY SUMMARY REPORT

CASES REPORTED AS OF JANUARY 31, 2009

SELECTED INDICATORS	HIV CASES				AIDS CASES				TOTAL HIV/AIDS CASES			
	LIVING		CUMULATIVE		LIVING		CUMULATIVE		LIVING		CUMULATIVE	
	Number	Percent	Number	Percent	Number	Percent	Number	Percent	Number	Percent	Number	Percent
GENDER												
Males	29,225	85.7	30,043	85.6	58,583	87.9	138,368	90.6	87,808	87.1	168,411	89.7
Females	4,562	13.4	4,736	13.5	7,514	11.3	13,450	8.8	12,076	12.0	18,186	9.7
Transgender	329	1.0	338	1.0	574	0.9	906	0.6	903	0.9	1,244	0.7
RACE/ETHNICITY												
White	16,469	48.3	16,979	48.3	31,132	46.7	84,535	55.4	47,601	47.2	101,514	54.0
Black	6,373	18.7	6,620	18.9	12,598	18.9	27,349	17.9	18,971	18.8	33,969	18.1
Hispanic	9,623	28.2	9,826	28.0	20,180	30.3	35,833	23.5	29,803	29.6	45,659	24.3
Asian/Pacific Islander	1,144	3.4	1,166	3.3	2,144	3.2	3,814	2.5	3,288	3.3	4,980	2.7
American Indian/Alaskan Native	165	0.5	172	0.5	312	0.5	696	0.5	477	0.5	868	0.5
Multi-race	183	0.5	193	0.5	245	0.4	369	0.2	428	0.4	562	0.3
Unknown	159	0.5	161	0.5	60	0.1	128	0.1	219	0.2	289	0.2
EXPOSURE CATEGORY												
MSM/Bisexual Male	22,784	66.8	23,173	66.0	42,385	63.6	102,178	66.9	65,169	64.7	125,351	66.7
Injection Drug Use	2,469	7.2	2,684	7.6	6,693	10.0	15,599	10.2	9,162	9.1	18,283	9.7
MSM/Bisexual Male & IDU	2,230	6.5	2,326	6.6	5,776	8.7	14,345	9.4	8,006	7.9	16,671	8.9
Hemophiliac/Transfusion	125	0.4	140	0.4	569	0.9	2,330	1.5	694	0.7	2,470	1.3
Heterosexual Contact	3,209	9.4	3,271	9.3	6,269	9.4	9,564	6.3	9,478	9.4	12,835	6.8
Other/Unknown	2,994	8.8	3,207	9.1	4,609	6.9	7,890	5.2	7,603	7.5	11,097	5.9
Pediatric Exposure	305	0.9	316	0.9	370	0.6	818	0.5	675	0.7	1,134	0.6
AGE GROUP												
Under 13 years of age	304	0.9	315	0.9	268	0.4	666	0.4	572	0.6	981	0.5
13 to 19 years of age	835	2.4	840	2.4	451	0.7	657	0.4	1,286	1.3	1,497	0.8
20 to 29 years of age	9,629	28.2	9,755	27.8	10,709	16.1	23,035	15.1	20,338	20.2	32,790	17.5
30 to 39 years of age	12,772	37.4	13,057	37.2	28,652	43.0	65,241	42.7	41,424	41.1	78,298	41.7
40 to 49 years of age	7,724	22.6	8,056	22.9	19,232	28.8	43,352	28.4	26,956	26.7	51,408	27.4
Over 49 years of age	2,852	8.4	3,094	8.8	7,359	11.0	19,773	12.9	10,211	10.1	22,867	12.2
TOTAL	34,116	100.0	35,117	100.0	66,671	100.0	152,724	100.0	100,787	100.0	187,841	100.0

AIDS reporting began in March 1983. HIV reporting began in April 2006.

Percents may not add to 100% due to rounding.

MSM = Men who have sex with men. IDU = Injection drug use.

Source: California Department of Public Health, Office of AIDS, HIV/AIDS Case Registry Section, data as of January 31, 2009.

For more information, call the HIV/AIDS Case Registry Section at (916) 449-5866.



CUMULATIVE HIV/AIDS CASES IN CALIFORNIA MODE OF EXPOSURE BY RACE/ETHNICITY REPORTED AS OF JANUARY 31, 2009

MODE OF EXPOSURE	HIV CASES					AIDS CASES					TOTAL HIV/AIDS CASES				
	WHITE	BLACK	HISPANIC	OTHER	TOTAL	WHITE	BLACK	HISPANIC	OTHER	TOTAL	WHITE	BLACK	HISPANIC	OTHER	TOTAL
MSM/Bi	12,608	3,060	6,379	1,126	23,173	64,088	12,622	22,218	3,250	102,178	76,696	15,682	28,597	4,376	125,351
IDU	1,168	849	581	86	2,684	5,730	6,133	3,420	316	15,599	6,898	6,982	4,001	402	18,283
MSM/Bi & IDU	1,396	408	443	79	2,326	8,764	2,712	2,495	374	14,345	10,160	3,120	2,938	453	16,671
Heterosexual Contact	902	1,120	1,080	169	3,271	2,674	3,120	3,290	480	9,564	3,576	4,240	4,370	649	12,835
Other	905	1,183	1,343	232	3,663	3,279	2,762	4,410	587	11,038	4,184	3,945	5,753	819	14,701
TOTAL	16,979	6,620	9,826	1,692	35,117	84,535	27,349	35,833	5,007	152,724	101,514	33,969	45,659	6,699	187,841

AIDS reporting began in March 1983. HIV reporting began in April 2006.

MSM/Bi = Men who have sex with men/Bisexual males. IDU = Injection Drug Use.

Other Race/Ethnicity includes Asian/Pacific Islander, American Indian/Alaskan Native, Multi-Race and those with unknown or missing race/ethnicity.

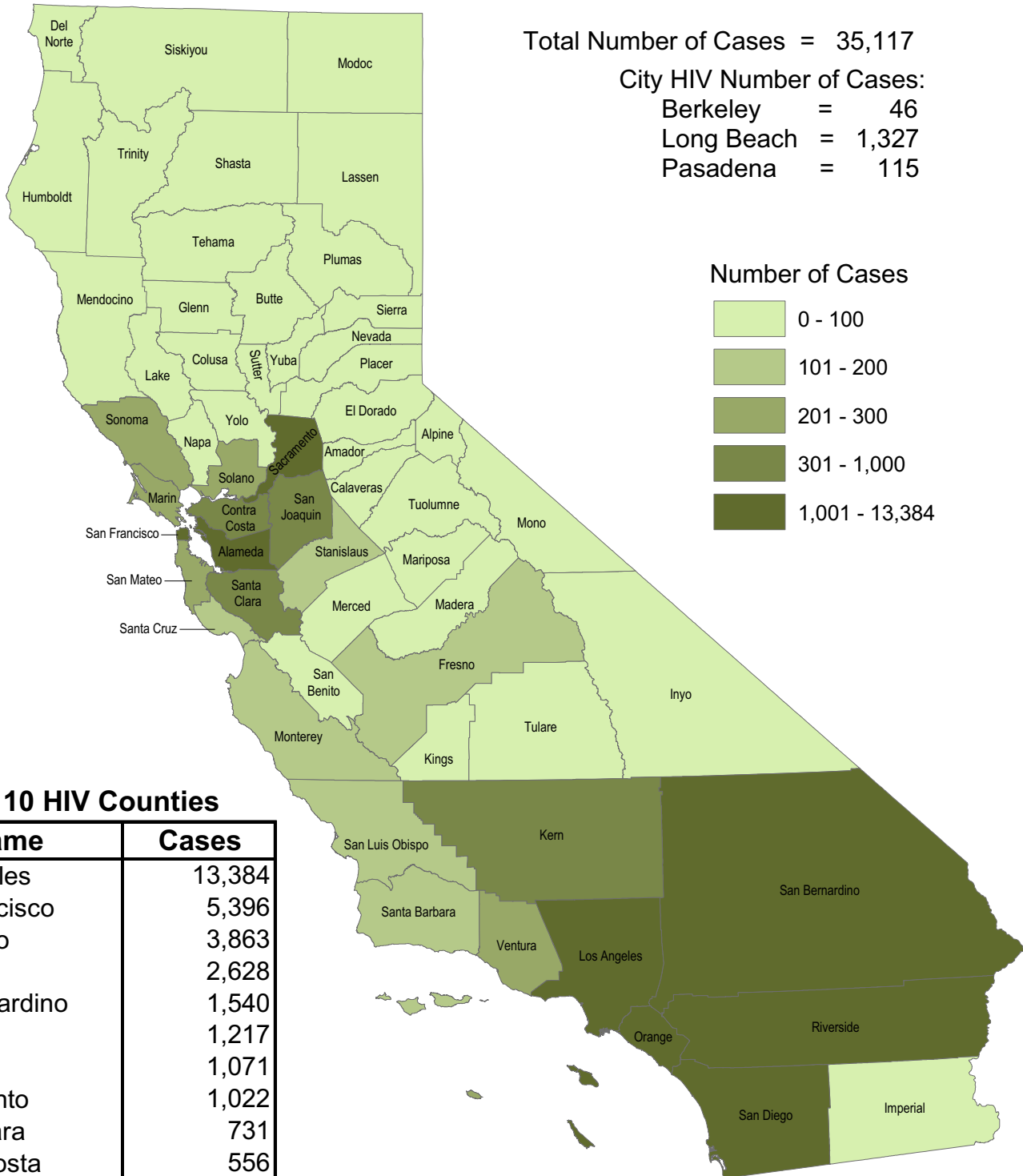
Other Mode of Exposure includes Hemophiliac, Transfusion of blood or blood products/Transplant, Confirmed other risk, No identified risk and Pediatric.

Source: California Department of Public Health, Office of AIDS, HIV/AIDS Case Registry Section, data as of January 31, 2009.

For more information, call the HIV/AIDS Case Registry Section at (916) 449-5866.



HIV CASES IN CALIFORNIA CUMULATIVE AS OF JANUARY 31, 2009



HIV reporting began in April 2006.

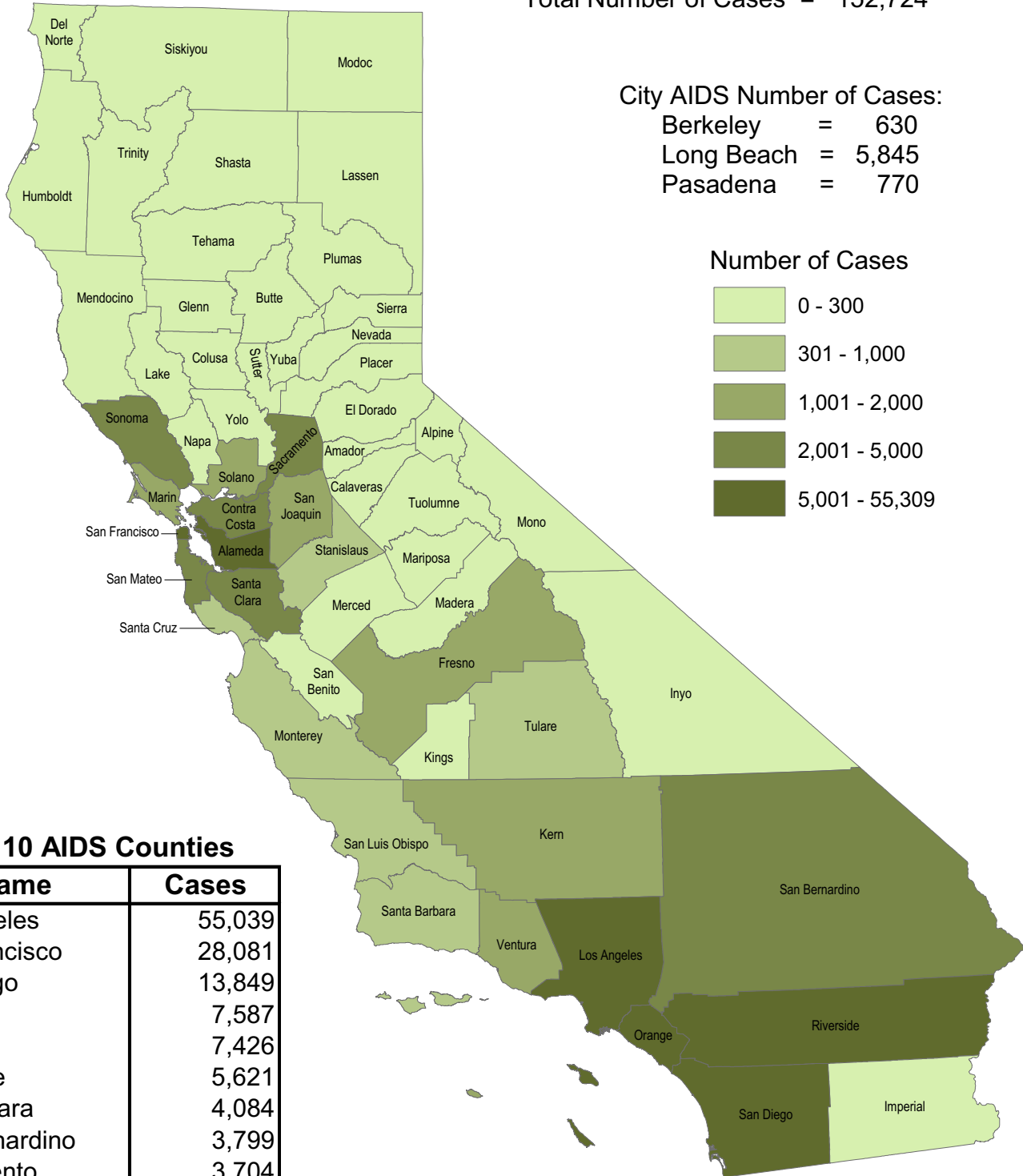
Source: California Department of Public Health, Office of AIDS, HIV/AIDS Case Registry Section, data as of January 31, 2009.
 For more information, call the HIV/AIDS Case Registry Section at (916) 449-5866.



AIDS CASES IN CALIFORNIA CUMULATIVE AS OF JANUARY 31, 2009

Total Number of Cases = 152,724

City AIDS Number of Cases:
 Berkeley = 630
 Long Beach = 5,845
 Pasadena = 770



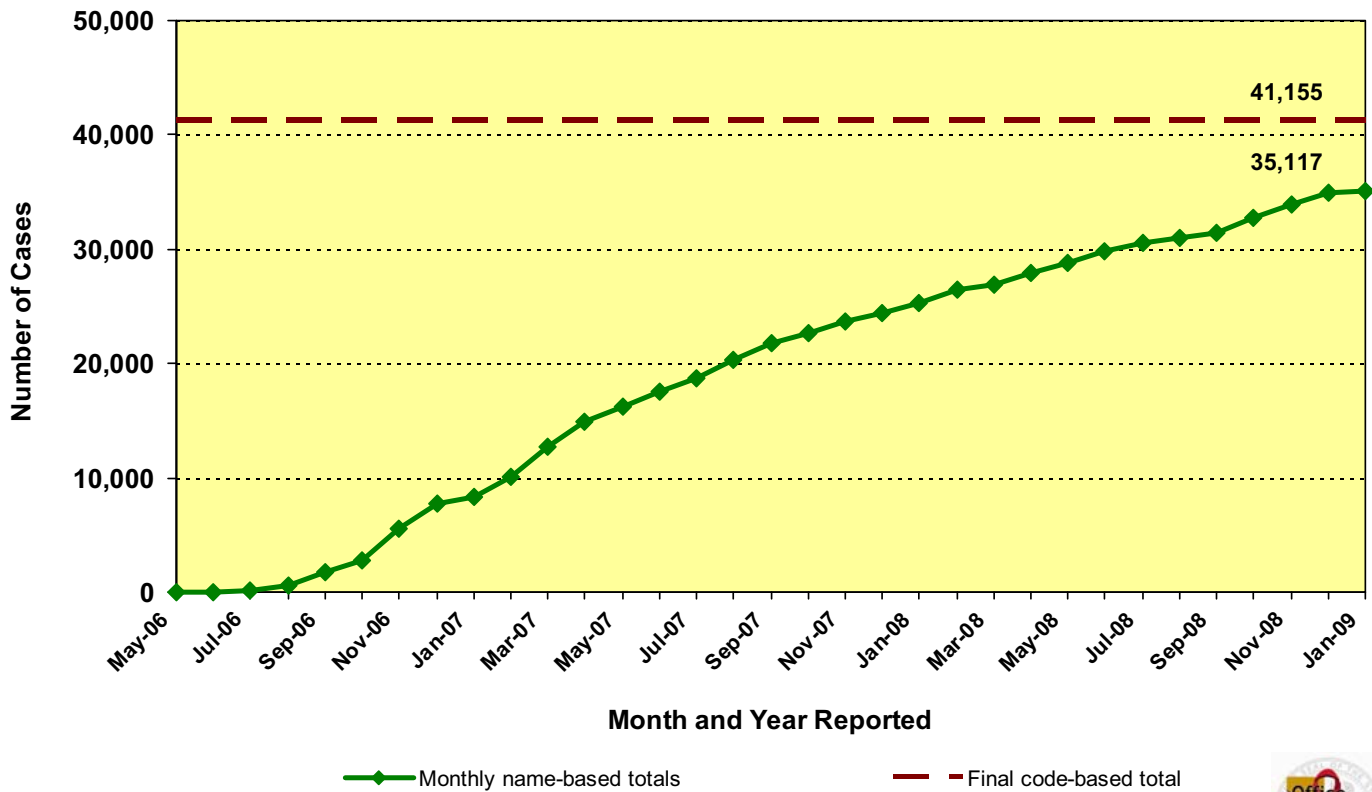
Top 10 AIDS Counties

Name	Cases
Los Angeles	55,039
San Francisco	28,081
San Diego	13,849
Alameda	7,587
Orange	7,426
Riverside	5,621
Santa Clara	4,084
San Bernardino	3,799
Sacramento	3,704
Contra Costa	2,816

AIDS reporting began in March 1983.

Source: California Department of Public Health, Office of AIDS, HIV/AIDS Case Registry Section, data as of January 31, 2009.
 For more information, call the HIV/AIDS Case Registry Section at (916) 449-5866.

NAME-BASED HIV CASES COMPARED TO FINAL CODE-BASED TOTAL CUMULATIVE AS OF JANUARY 31, 2009



May-06 data includes cases reported for both April and May 2006.
 HIV case totals through March 2006 represent HIV cases reported by Non-Name Code.
 Beginning April 2006, HIV case totals are based on HIV cases reported by name.

COUNTY	NAME-BASED	CODE-BASED
Alameda	1,071	1,713
Berkeley	46	123
Alpine	0	1
Amador	8	21
Butte	74	87
Calaveras	4	3
Colusa	1	3
Contra Costa	556	688
Del Norte	9	16
El Dorado	48	49
Fresno	167	692
Glenn	6	4
Humboldt	72	93
Imperial	55	61
Inyo	2	2
Kern	523	534
Kings	49	95
Lake	16	33
Lassen	6	8
Los Angeles	13,384	15,304
Long Beach	1,327	1,397
Pasadena	115	130
Madera	64	106
Marin	208	352
Mariposa	0	5
Mendocino	23	48
Merced	28	48
Modoc	0	0
Mono	0	0
Monterey	123	162
Napa	70	73
Nevada	7	11

COUNTY	NAME-BASED	CODE-BASED
Orange	2,628	2,155
Placer	27	51
Plumas	1	4
Riverside	1,217	1,691
Sacramento	1,022	814
San Benito	4	2
San Bernardino	1,540	1,271
San Diego	3,863	4,944
San Francisco	5,396	6,182
San Joaquin	379	411
San Luis Obispo	134	133
San Mateo	261	392
Santa Barbara	112	143
Santa Clara	731	1,017
Santa Cruz	132	152
Shasta	40	16
Sierra	1	0
Siskiyou	5	6
Solano	286	418
Sonoma	273	415
Stanislaus	124	214
Sutter	14	24
Tehama	12	4
Trinity	1	0
Tulare	38	79
Tuolumne	15	13
Ventura	246	313
Yolo	32	62
Yuba	3	14
Unknown	6	3
TOTAL	35,117	41,155

HIV case totals through March 2006 represent HIV cases reported by Non-Name Code. Beginning April 2006, HIV case totals are based on HIV cases reported by name.
 Due to reporting system differences, HIV cases reported by Non-Name Code and name cannot be combined for unduplicated case counts.
 Source: California Department of Public Health, Office of AIDS, HIV/AIDS Case Registry Section, data as of March 31, 2006 and as of January 31, 2009.
 For more information, call the HIV/AIDS Case Registry Section at (916) 449-5866.



CALIFORNIA HIV/AIDS CASES BY YEAR AND MONTH REPORTED AS OF JANUARY 31, 2009

MONTH	2009		2008		2007		2006		2005		2004	
	HIV	AIDS	HIV	AIDS	HIV	AIDS	HIV	AIDS	HIV	AIDS	HIV	AIDS
January	266	101	1,017	286	981	327	436	239	410	253	612	357
February			1,020	289	2,033	343	357	242	526	327	764	407
March			880	263	1,651	439	496	282	547	283	934	525
April			1,154	317	1,585	341		226	484	288	792	342
May			1,114	348	1,437	373	230	313	600	293	665	361
June			901	274	1,484	347	172	316	641	316	660	373
July			813	296	1,279	345	318	320	454	295	595	418
August			1,100	247	1,597	403	650	401	621	346	652	355
September			617	269	917	295	1,643	484	655	284	1,410	722
October			1,301	399	1,084	377	1,326	418	428	282	515	292
November			1,303	250	794	283	1,430	464	514	274	562	281
December			949	227	818	189	1,253	405	576	266	413	262
TOTALS	266	101	12,169	3,465	15,660	4,062	N/A*	4,110	6,456	3,507	8,574	4,695

* HIV case totals through March 2006 represent HIV cases reported by Non-Name Code. Beginning April 2006, HIV case totals are based on HIV cases reported by Name.

Due to reporting system differences, HIV cases reported by Non-Name Code and Name cannot be combined for unduplicated case counts.

AIDS reporting began in March 1983. HIV reporting began in April 2006.

N/A = Not Applicable.

Source: California Department of Public Health, Office of AIDS, HIV/AIDS Case Registry Section, data as of March 31, 2006 and as of January 31, 2009.

For more information, call the HIV/AIDS Case Registry Section at (916) 449-5866.