

California Adolescent Sexual Health Work Group (ASHWG) 2006 Data for California Adolescent Births, AIDS, STDs

January 2009

Special thanks to:

Joan Chow, MPH, DrPH

Chair Data Integration Subcommittee
Chief, Epidemiology Unit
Surveillance and Epidemiology Section
Sexually Transmitted Disease Control Branch
California Department of Public Health

Denise Gilson

Chief, Surveillance and Data Management Unit
Surveillance and Epidemiology Section
Sexually Transmitted Disease Control Branch
California Department of Public Health

Aldona Herrndorf, MPH

Health Services Researcher,
Epidemiology, Assessment and Program Development,
Maternal, Child and Adolescent Health Program/Center
for Family Health
California Department of Public Health

Lisette Tabshouri, MA

HIV/AIDS Case Registry Section
Office of AIDS
California Department of Public Health

Winnie Dysle

HIV/AIDS Case Registry Section
Office of AIDS
California Department of Public Health

Paul Gibson, MS, MPH

Health Promotion Coordinator
Health Promotion and Health Education Unit
Disease Prevention Section
STD Control Branch, CA Department of Public
Health

Sandi Goldstein, MPH

California Adolescent Health Collaborative
Oakland, CA

Liz Worthy

California Adolescent Health Collaborative
Oakland, CA

The California Adolescent Sexual Health Work Group (ASHWG) is a standing work group of program managers from the California Department of Public Health, California Department of Education, and key non-governmental organizations committed to working more effectively to address the sexual and reproductive health of California adolescents. Its vision is to create a coordinated, collaborative, and integrated system among government and non-government organizations to promote and protect the sexual and reproductive health of youth in California.

The ASHWG Data Integration sub-committee's intention is to improve comparability and expand access to and use of HIV, STD, and Teen Birth data. Members of this Sub-committee include epidemiologists from California Department of Public Health branches of Sexually Transmitted Diseases (STD) Control, Office of AIDS (OA), Maternal, Child and Adolescent Health (MCAH) and non-governmental "end users" of their data.

The ASHWG Data Tables and Charts for Adolescent Births, AIDS and STDs are presented with standardized data elements across all conditions, i.e. age, race, gender, and timeframe. The purpose is to make useable data readily available for improved program planning, implementation and evaluation by programs serving adolescents (at risk).

Adolescent Birth Data - California

Adolescent Birth Rates and Births by Mother's Age, For California Females Age 10-19, 2000-2006**

Age Group	2000		2001		2002		2003		2004		2005		2006	
	Births	Birth Rate	Births	Birth Rate	Births	Birth Rate	Births	Birth Rate	Births	Birth Rate	Births	Birth Rate	Births	Birth Rate
Age 10-14	895	0.7	809	0.6	743	0.5	710	0.5	695	0.5	756	0.5	681	0.5
Age 15-17	18,887	26.5	17,307	23.8	16,660	22.4	16,193	21.2	16,263	20.6	16,740	20.3	17,208	20.0
Age 18-19	36,486	76.8	35,659	73.5	33,541	68.5	33,137	66.5	33,474	65.5	33,277	63.9	35,562	66.3
Age 15-19	55,373	46.7	52,966	43.7	50,201	40.7	49,330	39.1	49,737	38.2	50,017	37.2	52,770	37.8

*Rate per 1,000 age-specific females

Adolescent Birth Rates and Births by Race/Ethnicity, For California Females Age 15-19, 2000- 2006**

Race/Ethnicity	2000		2001		2002		2003		2004		2005		2006	
	Births	Birth Rate	Births	Birth Rate	Births	Birth Rate	Births	Birth Rate	Births	Birth Rate	Births	Birth Rate	Births	Birth Rate
White (Non Hispanic)	9,871	21.6	8,989	19.2	8,375	17.5	7,947	16.3	7,340	14.8	7,028	13.9	7,118	13.9
African American (Non Hispanic)	4,841	58.0	4,354	50.1	3,913	43.7	3,890	41.9	3,872	40.2	3,819	38.4	4,143	40.8
American Indian (Non Hispanic)	316	43.5	283	37.0	276	34.8	250	30.1	245	28.3	281	31.2	271	29.3
Asian/Pacific Islander (Non Hispanic)	2,286	16.4	2,125	15.0	1,919	13.5	1,809	12.6	1,679	11.6	1,675	11.6	1,549	10.9
Hispanic	36,892	78.7	36,051	76.1	34,613	72.0	34,252	69.1	35,315	68.1	36,025	65.4	38,243	65.0

*Rate per 1,000 females age 15-19

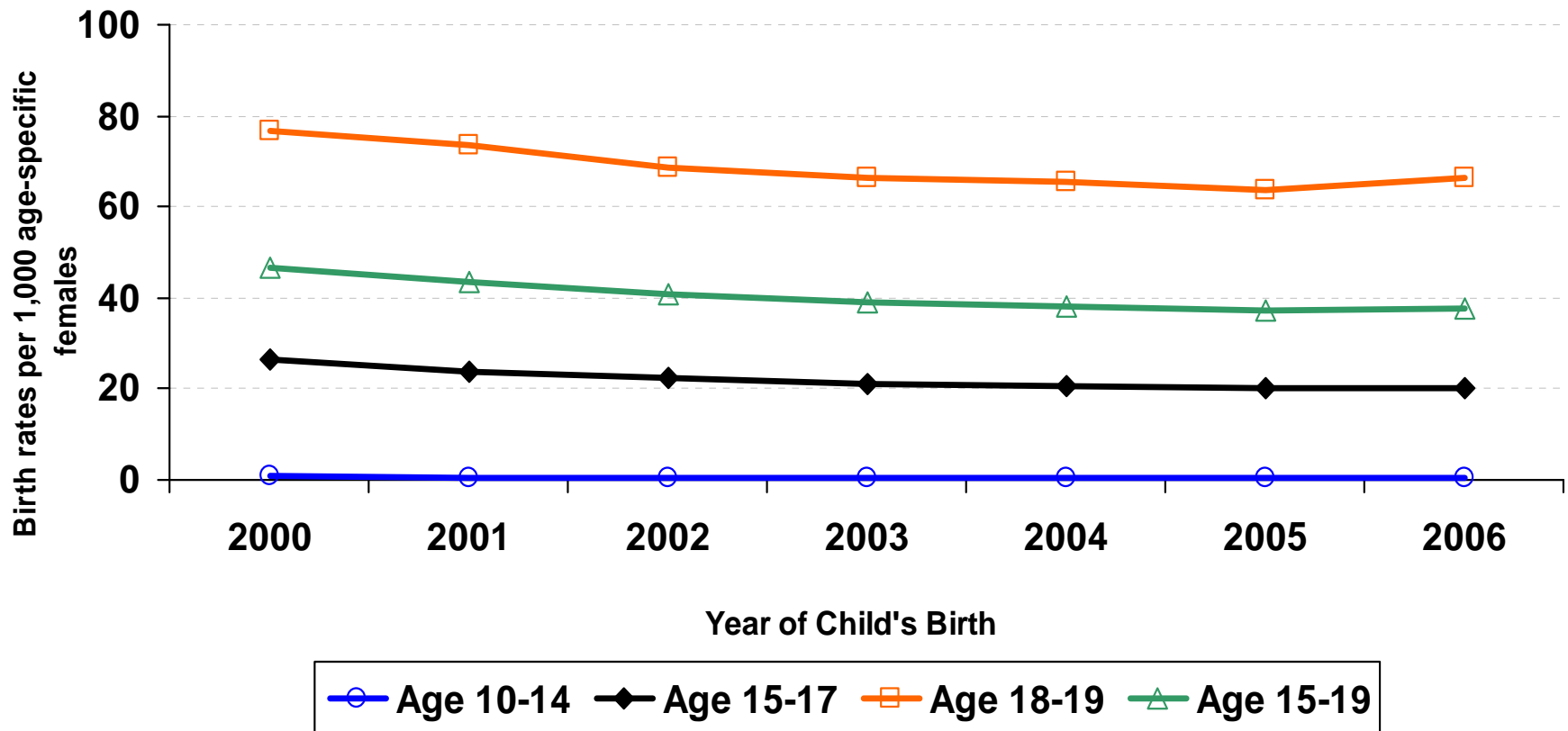
** Births included in these calculations are to mothers who report a California residence on the birth certification.

Source: [Number of births are derived from the California Birth Statistical Master File, 2000-2006.](#)

[State of California, Department of Finance, Race/Ethnic Population with Age and Sex Detail, 2000-2050. Sacramento, California, July 2007](#)

Prepared by: California Department of Public Health, Maternal, Child and Adolescent Health Program.

Adolescent Birth Rates by Mother's Age For Females Age 10-19 California, 2000 - 2006

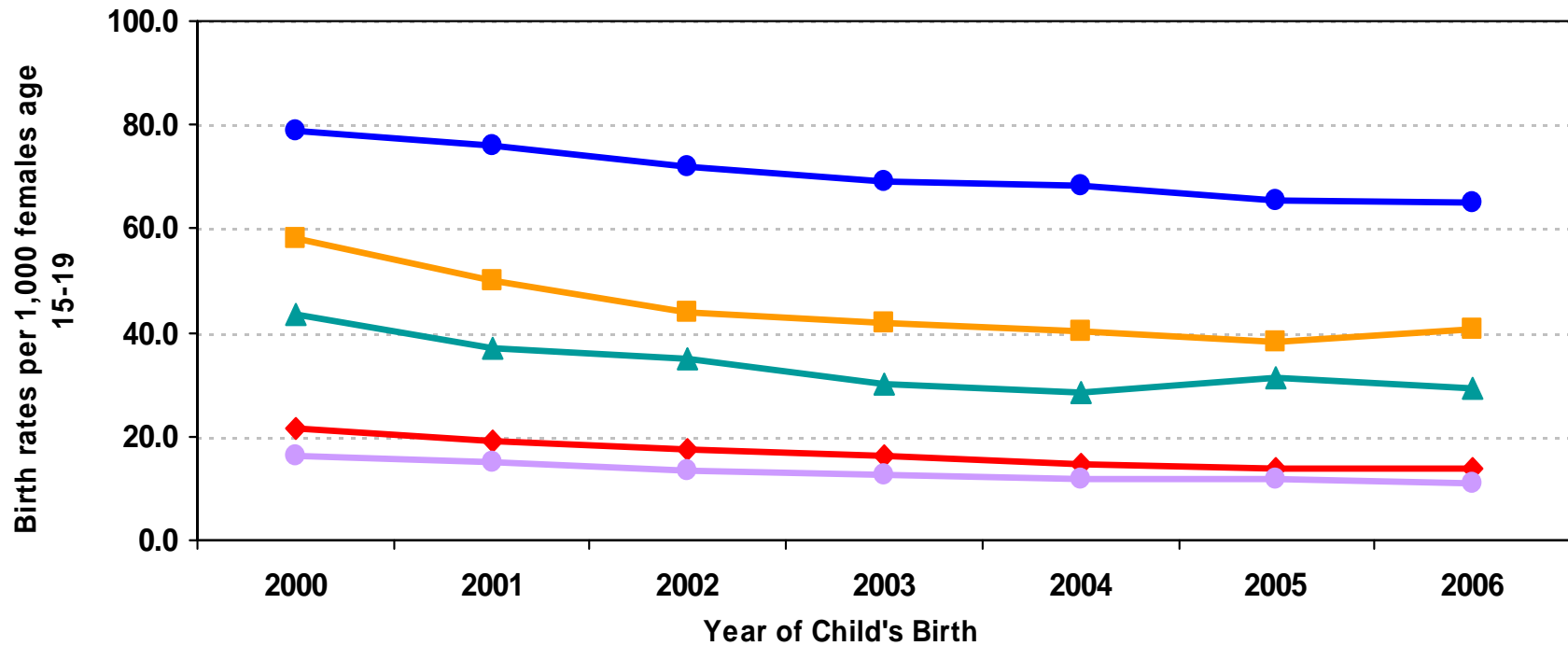


Source: [California Birth Statistical Master File, 2000-2006.](#)

[California Department of Finance, Race/Ethnic Population with Age & Sex Detail, 2000-2050, Sacramento, CA, July 2007.](#)

Prepared by: California Department of Public Health, Maternal, Child and Adolescent Health Program.

Adolescent Birth Rates by Race/Ethnicity For Females Age 15-19 California, 2000 - 2006



◆ White (Non Hispanic)
 ■ African American (Non Hispanic)
 ▲ American Indian (Non Hispanic)
● Asian/Pacific Islander (Non Hispanic)
 ● Hispanic

Source: [California Birth Statistical Master File, 2000-2006.](#)
[California Department of Finance, Race/Ethnic Population with Age & Sex Detail, 2000-2050, Sacramento, CA, July 2007.](#)
 Prepared by: California Department of Public Health, Maternal, Child and Adolescent Health Program.

Adolescent/Young Adult AIDS Data - California

Living AIDS Cases and Rates Among 10-24 Year Olds by Race/Ethnicity, Age Group and Gender, Cummulative Cases Reported Through July 31, 2007						
AGE GROUP BY RACE/ETHNICITY			FEMALE		MALE	
			Cases	Rate	Cases	Rate
White						
Ages	10 - 14	*	^	14	3.0	
	15 - 17	*	^	18	5.6	
	18 - 19	*	*	38	17.1	
	(15 - 19)	23	4.5	56	10.3	
	20 - 24	87	17.6	595	110.9	
African American/Black						
Ages	10 - 14	11	^	*	^	
	15 - 17	8	^	*	*	
	18 - 19	18	44.4	*	*	
	(15 - 19)	26	25.2	47	43.7	
	20 - 24	125	141.2	321	332.5	
Hispanic/Latino						
Ages	10 - 14	15	2.2	19	2.7	
	15 - 17	15	3.8	36	8.7	
	18 - 19	26	11.4	97	39.9	
	(15 - 19)	41	6.6	133	20.2	
	20 - 24	160	31.3	1,053	188.3	
Other/Unknown						
Ages	10 - 14	*	^	*	^	
	15 - 17	*	^	*	^	
	18 - 19	*	^	*	*	
	(15 - 19)	7	^	15	7.3	
	20 - 24	19	9.7	96	46.8	
TOTAL						
Ages	10 - 14	38	2.7	45	3.1	
	15 - 17	36	4.1	71	7.7	
	18 - 19	61	11.0	180	30.5	
	(15 - 19)	97	6.7	251	16.6	
	20 - 24	391	30.3	2,065	147.8	

*Data withheld to ensure case confidentiality.

^Rates where the Relative Standard error was above 0.3000 withheld due to statistical instability.

Other/Unknown includes Asian/Pacific Islanders, Native Americans, Multi-Race and those with missing race/ethnicity information.

Source: California Department of Public Health, Office of AIDS, HIV/AIDS Case Registry Section, data as of October 31, 2007.

California Department of Finance, Race/Ethnic Population with Age & Sex Detail, 2000-2050, Sacramento, CA, July 2007

For more information, call the HIV/AIDS Case Registry Section at (916) 449-5866.

Rundate: 11/07/2007, WD.

Adolescent/Young Adult AIDS Data - California

Living AIDS Cases and Rates Among 10-24 Year Olds for MSM and Heterosexual Contact Modes of Exposure by Race/Ethnicity, Age Group and Gender. Cumulative Cases Reported Through July 31, 2007						
AGE GROUP BY RACE/ETHNICITY			FEMALE		MALE	
			Cases	Rate	Cases	Rate
White	Ages	10 - 14	0		0	
		15 - 17	*	^	9	^
	(15 - 19)	18 - 19	5	^	20	9.0
		(15 - 19)	*	^	29	5.3
	20 - 24	(15 - 19)	*	^	29	5.3
		20 - 24	50	10.1	393	73.3
African American/Black	Ages	10 - 14	0		0	
		15 - 17	5	^	11	^
	(15 - 19)	18 - 19	10	^	25	58.6
		(15 - 19)	15	14.6	36	33.5
	20 - 24	(15 - 19)	15	14.6	36	33.5
		20 - 24	70	79.1	246	254.8
Hispanic/Latino	Ages	10 - 14	0		*	^
		15 - 17	5	^	18	4.3
	(15 - 19)	18 - 19	18	7.9	71	29.2
		(15 - 19)	23	3.7	89	13.5
	20 - 24	(15 - 19)	23	3.7	89	13.5
		20 - 24	113	22.1	793	141.8
Other/Unknown	Ages	10 - 14	0		0	
		15 - 17	*	^	0	
	(15 - 19)	18 - 19	0		7	^
		(15 - 19)	*	^	7	^
	20 - 24	(15 - 19)	*	^	7	^
		20 - 24	9	^	77	37.5
TOTAL	Ages	10 - 14	0		*	^
		15 - 17	15	1.7	38	4.1
	(15 - 19)	18 - 19	33	5.9	123	20.8
		(15 - 19)	48	3.3	161	10.6
	20 - 24	(15 - 19)	48	3.3	161	10.6
		20 - 24	242	18.8	1,509	108.0

*Data withheld to ensure case confidentiality.

^Rates where the Relative Standard error was above 0.3000 withheld due to statistical instability.

MSM=Men who have sex with men.

Other/Unknown includes Asian/Pacific Islanders, Native Americans, Multi-Race and those with missing race/ethnicity information.

Source: California Department of Public Health, Office of AIDS, HIV/AIDS Case Registry Section, data as of October 31, 2007.

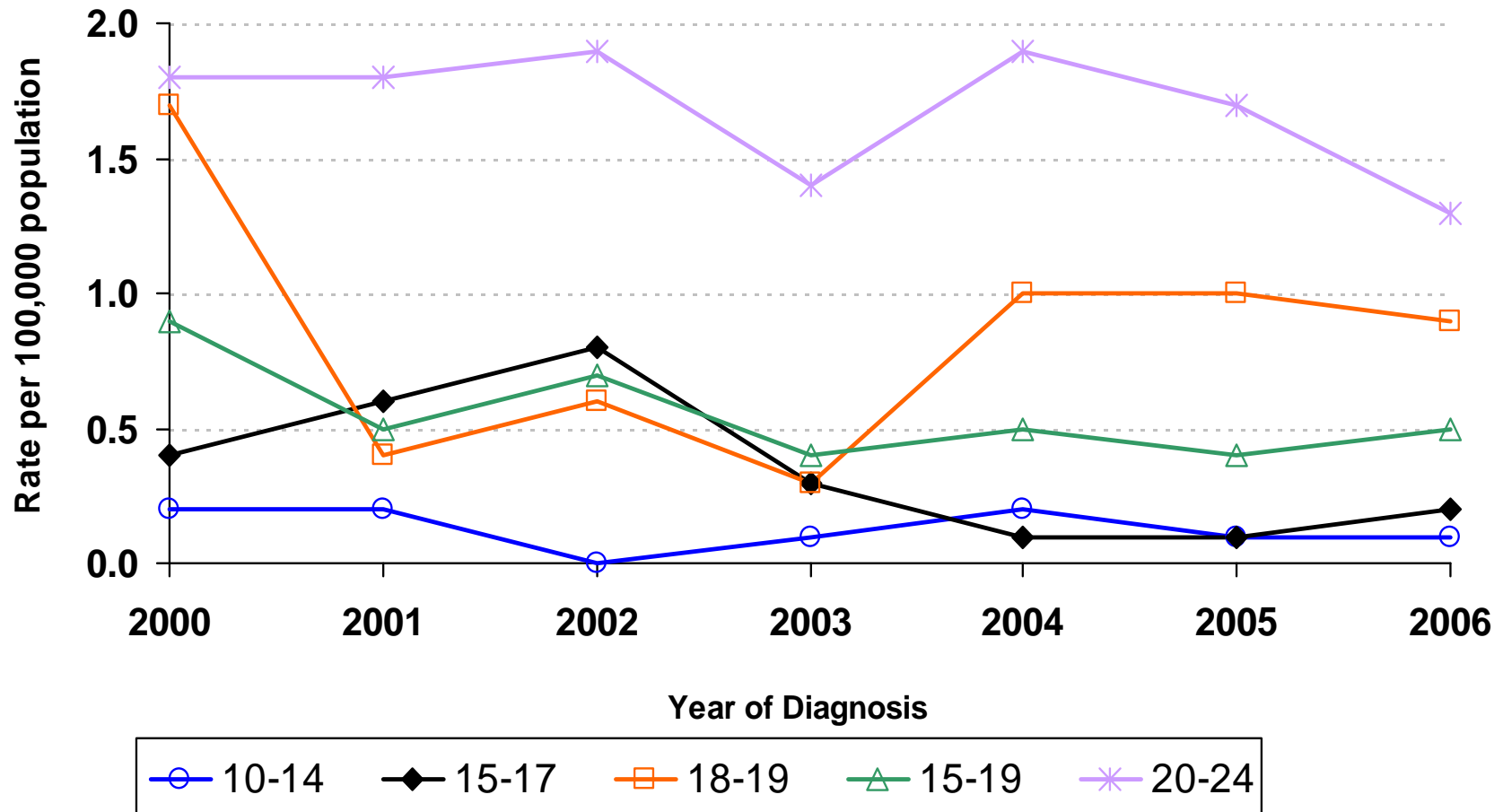
California Department of Finance, Race/Ethnic Population with Age & Sex Detail, 2000-2050, Sacramento, CA, July 2007.

For more information, call the HIV/AIDS Case Registry Section at (916) 449-5866.

Rundate: 11/07/2007, WD.

AIDS Rates Among Living California Females by Age Group and Year of Diagnosis

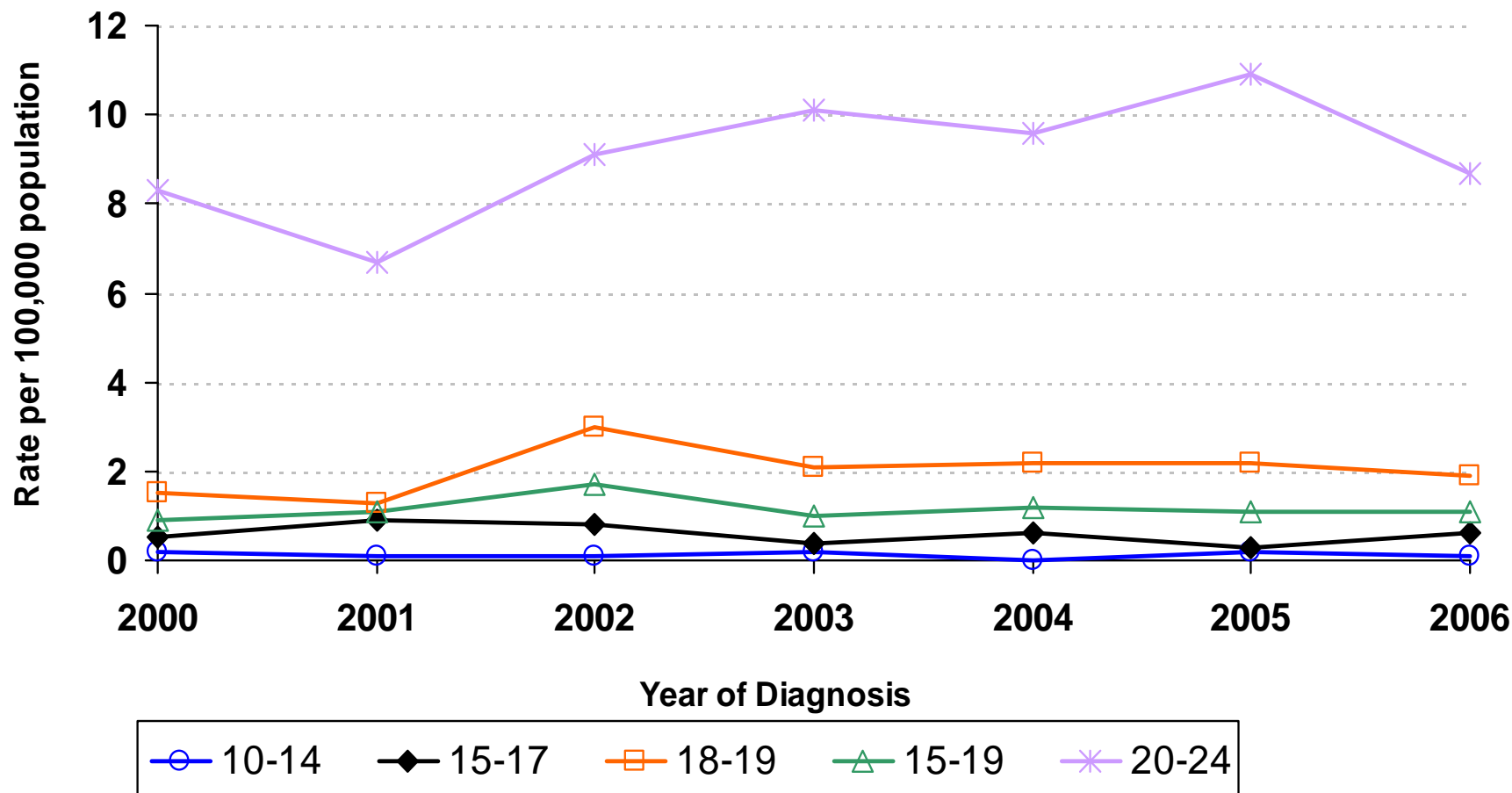
January 2000 through December 2006



Source: [California Department of Public Health, Office of AIDS, HIV/AIDS Case Registry Section, data as of October 31, 2007.](#)
[California Department of Finance, Race/Ethnic Population with Age & Sex Detail, 2000-2050, Sacramento, CA, July 2007.](#)
 For more information, call the HIV/AIDS Case Registry Section at (916) 449-5866.



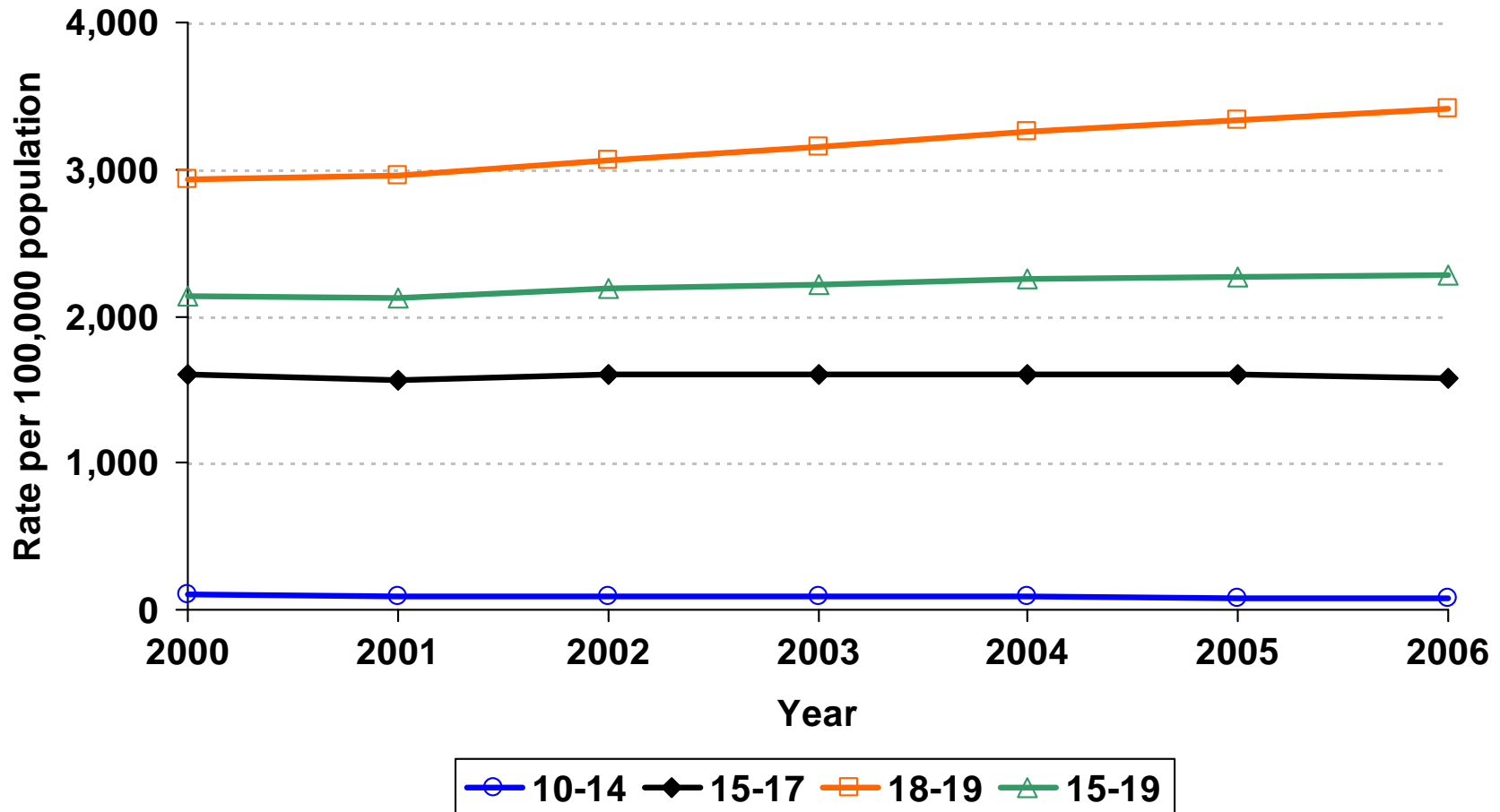
AIDS Rates Among Living California Males by Age Group and Year of Diagnosis From January 2000 Through December 2006



Source: [California Department of Public Health, Office of AIDS, HIV/AIDS Case Registry Section, data as of October 31, 2007.](#)
[California Department of Finance, Race/Ethnic Population with Age & Sex Detail, 2000-2050, Sacramento, CA, July 2007.](#)
 For more information, call the HIV/AIDS Case Registry Section at (916) 449-5866.

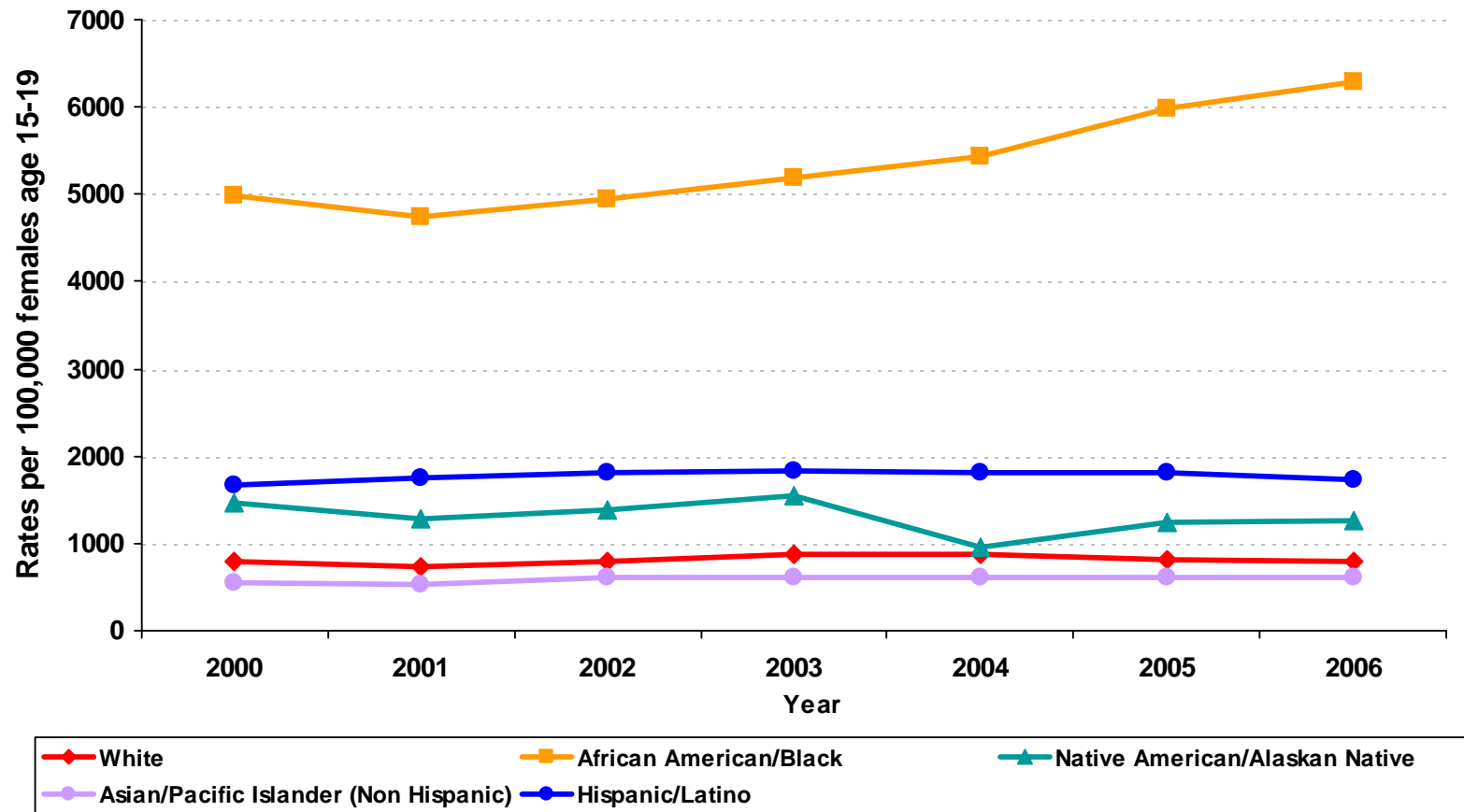


Chlamydia Rates for Adolescent Females by Age Group California, 2000–2006



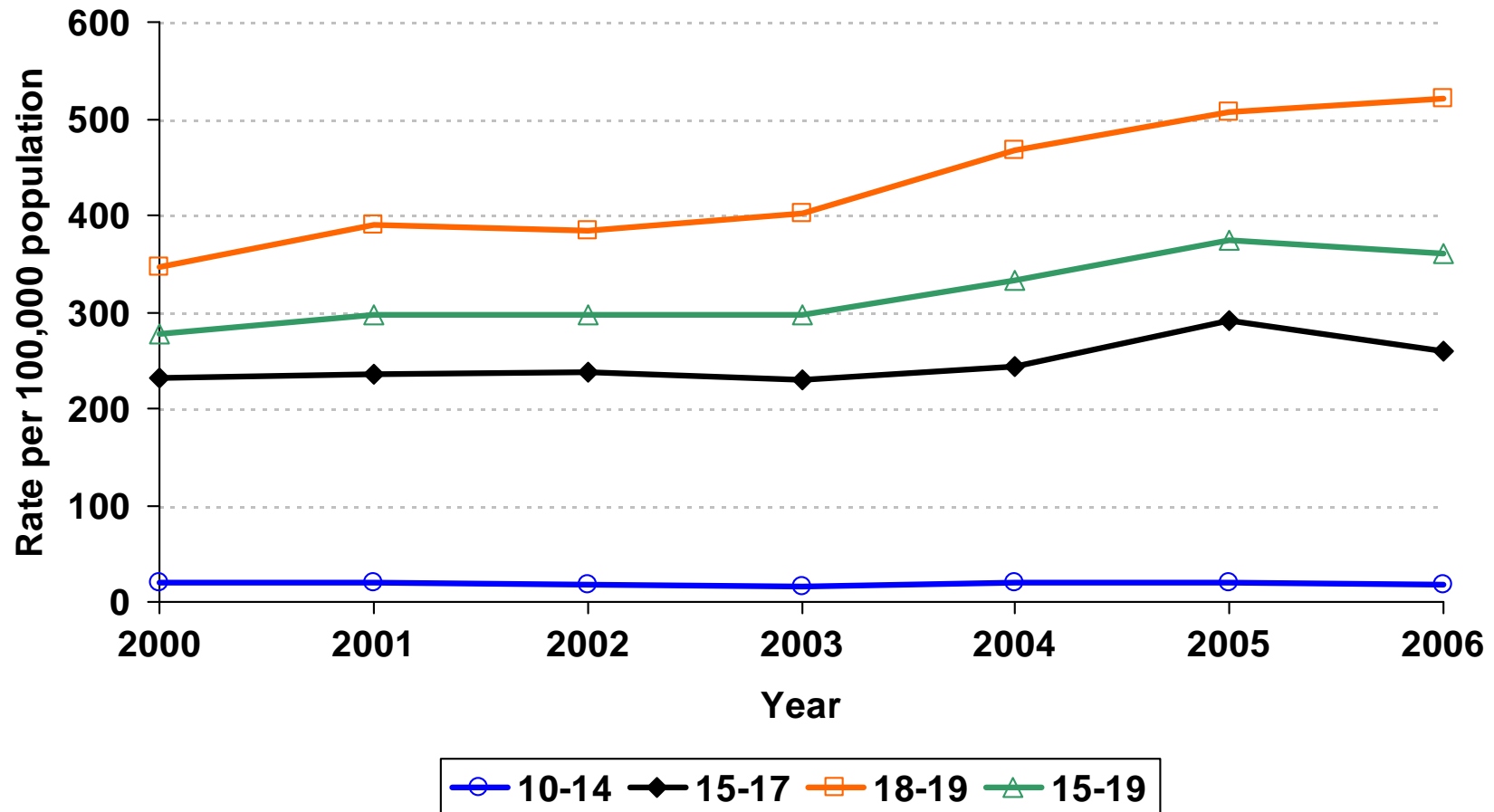
Source: [California Department of Public Health, STD Control Branch](#)
[California Department of Finance, Race/Ethnic Population with Age & Sex Detail, 2000-2050, Sacramento, CA, July 2007.](#)
Prepared by: California Department of Public Health, STD Control Branch

Chlamydia Rates by Race/Ethnicity For Females Age 15-19 California, 2000 - 2006



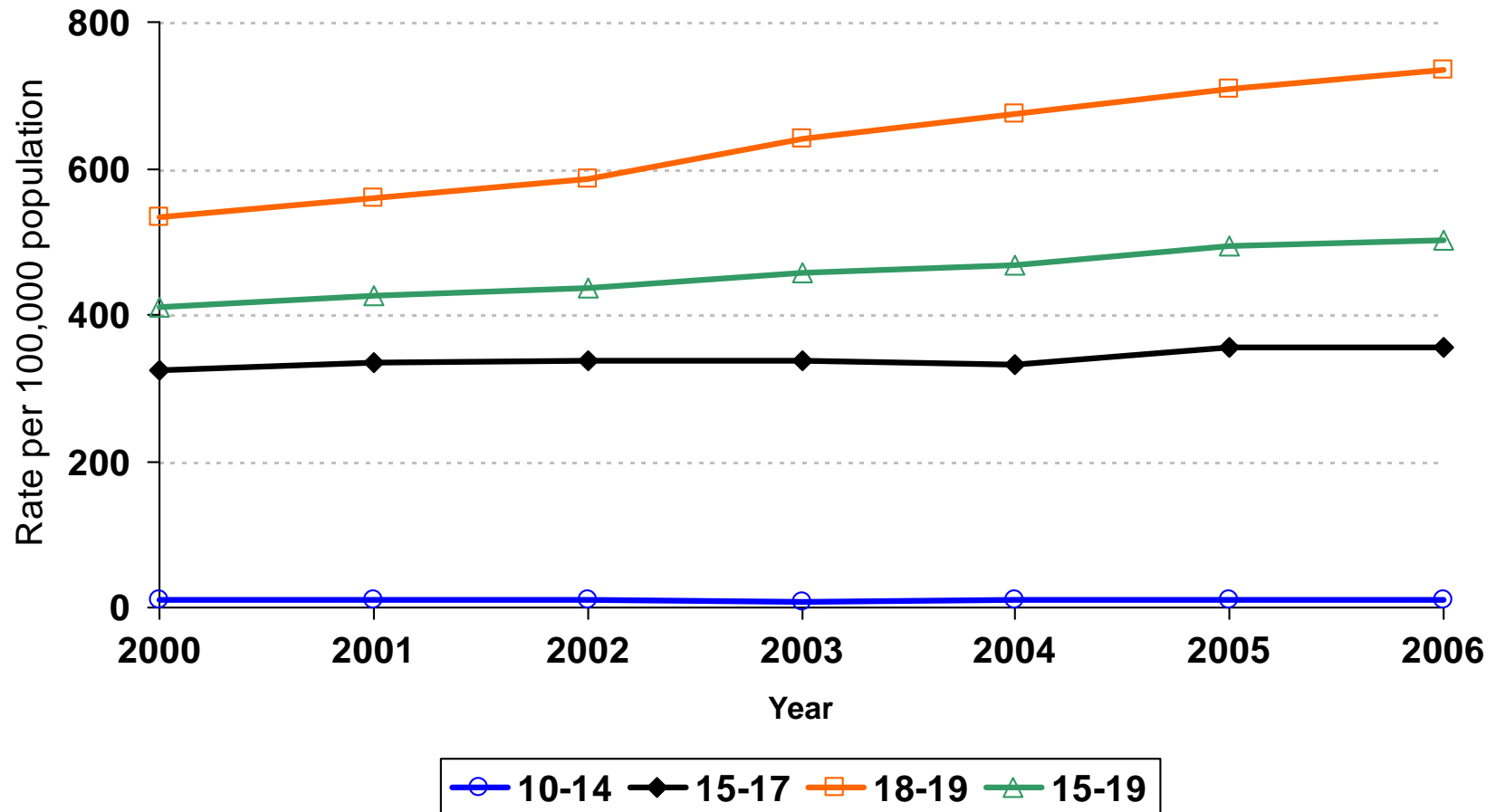
Source: [California Department of Public Health, STD Control Branch](#)
[California Department of Finance, Race/Ethnic Population with Age & Sex Detail, 2000-2050, Sacramento, CA, July 2007.](#)
 Prepared by: California Department of Public Health, STD Control Branch

Gonorrhea Rates for Adolescent Females by Age Group California, 2000–2006



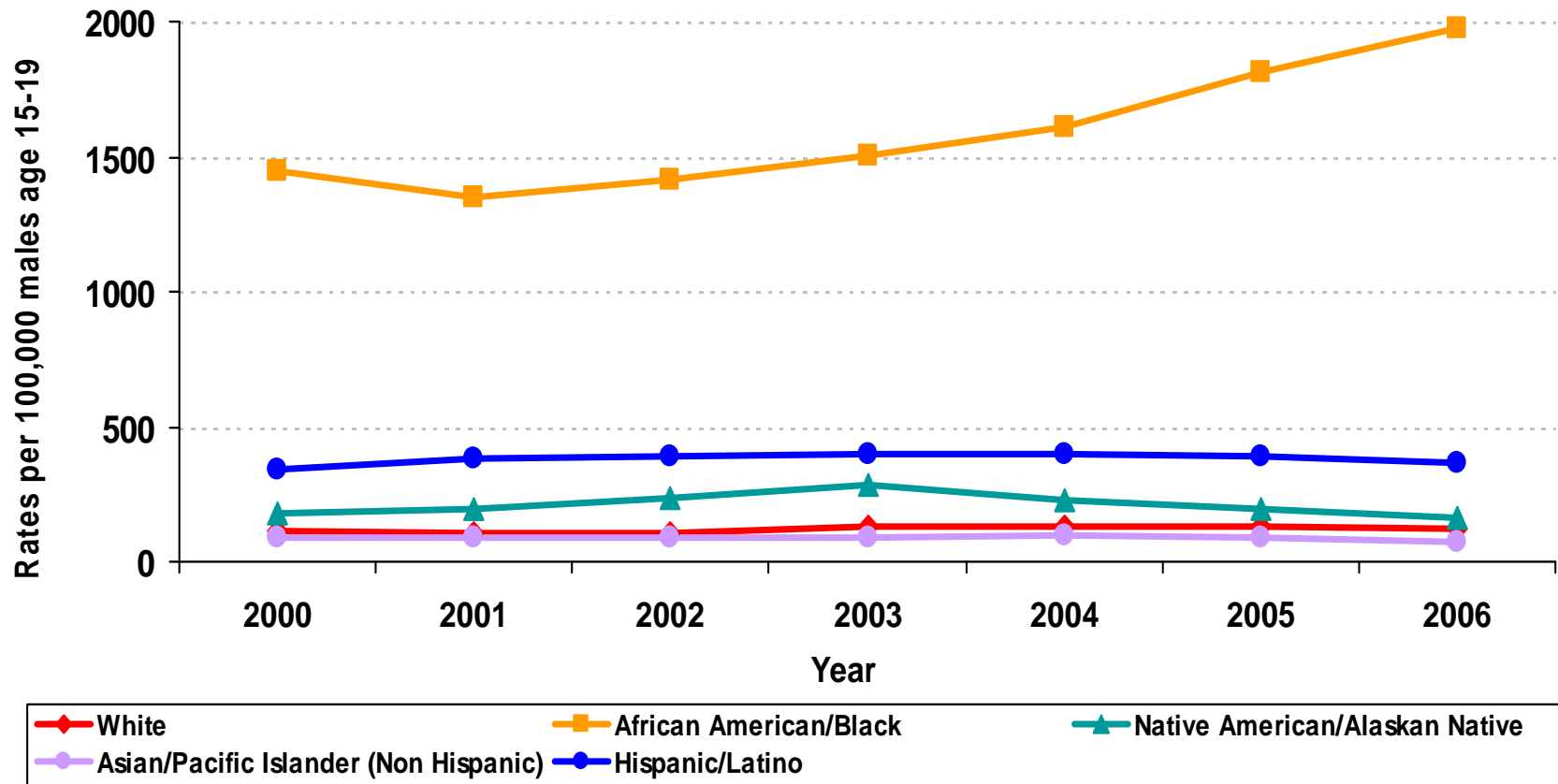
Source: [California Department of Public Health, STD Control Branch](#)
[California Department of Finance, Race/Ethnic Population with Age & Sex Detail, 2000-2050, Sacramento, CA, July 2007.](#)
Prepared by: California Department of Public Health, STD Control Branch

Chlamydia Rates for Adolescent Males by Age Group California, 2000–2006



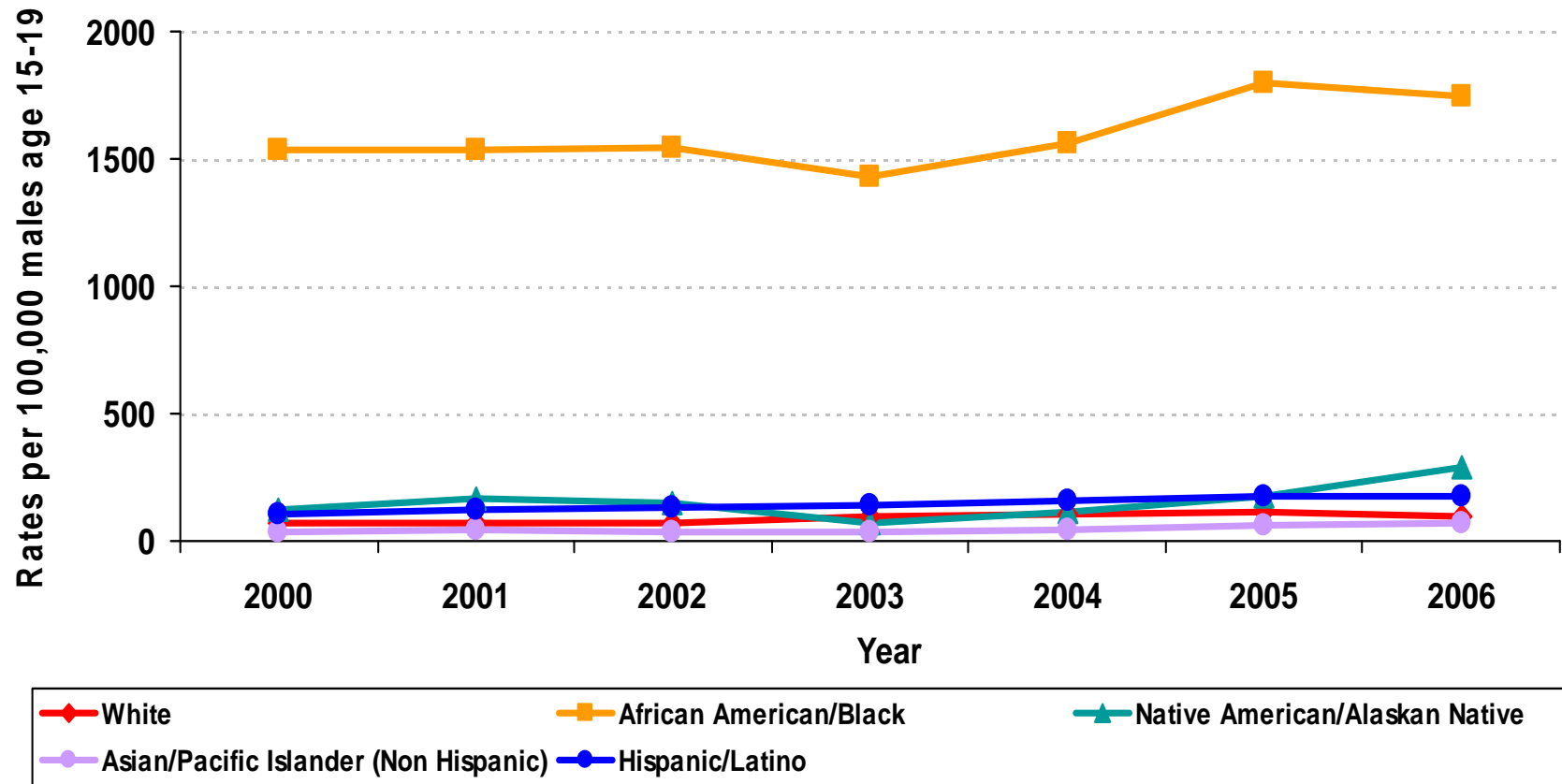
Source: [California Department of Public Health, STD Control Branch](#)
[California Department of Finance, Race/Ethnic Population with Age & Sex Detail, 2000-2050, Sacramento, CA, July 2007.](#)
Prepared by: California Department of Public Health, STD Control Branch

Chlamydia Rates by Race/Ethnicity For Males Age 15-19 California, 2000 - 2006



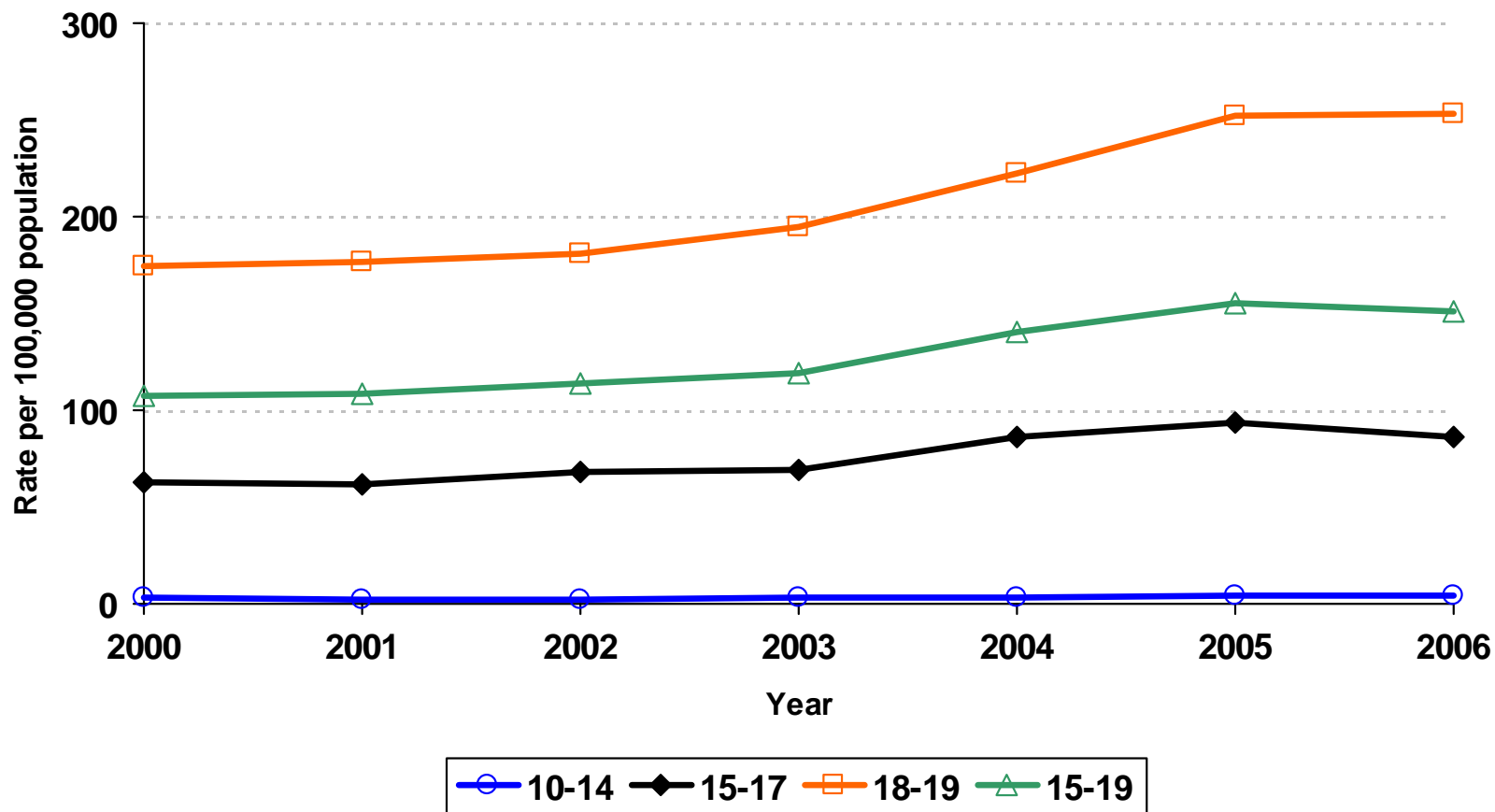
Source: [California Department of Public Health, STD Control Branch](#)
[California Department of Finance, Race/Ethnic Population with Age & Sex Detail, 2000-2050, Sacramento, CA, July 2007.](#)
Prepared by: California Department of Public Health, STD Control Branch

Gonorrhea Rates by Race/Ethnicity For Females Age 15-19 California, 2000 - 2006



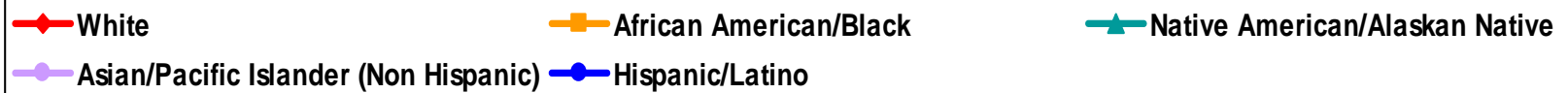
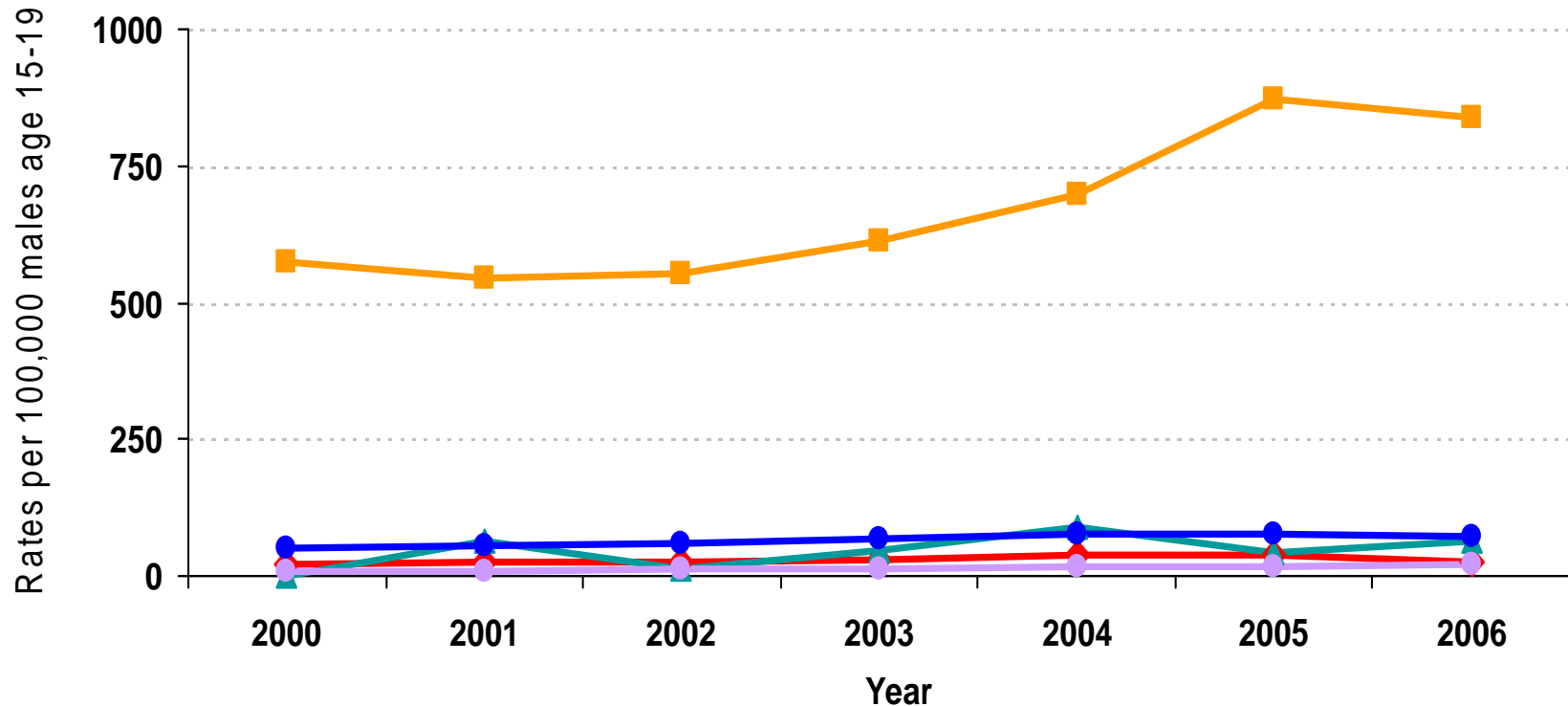
Source: [California Department of Public Health, STD Control Branch](#)
[California Department of Finance, Race/Ethnic Population with Age & Sex Detail, 2000-2050, Sacramento, CA, July 2007.](#)
 Prepared by: California Department of Public Health, STD Control Branch

Gonorrhea Rates for Adolescent Males by Age Group California, 2000–2006



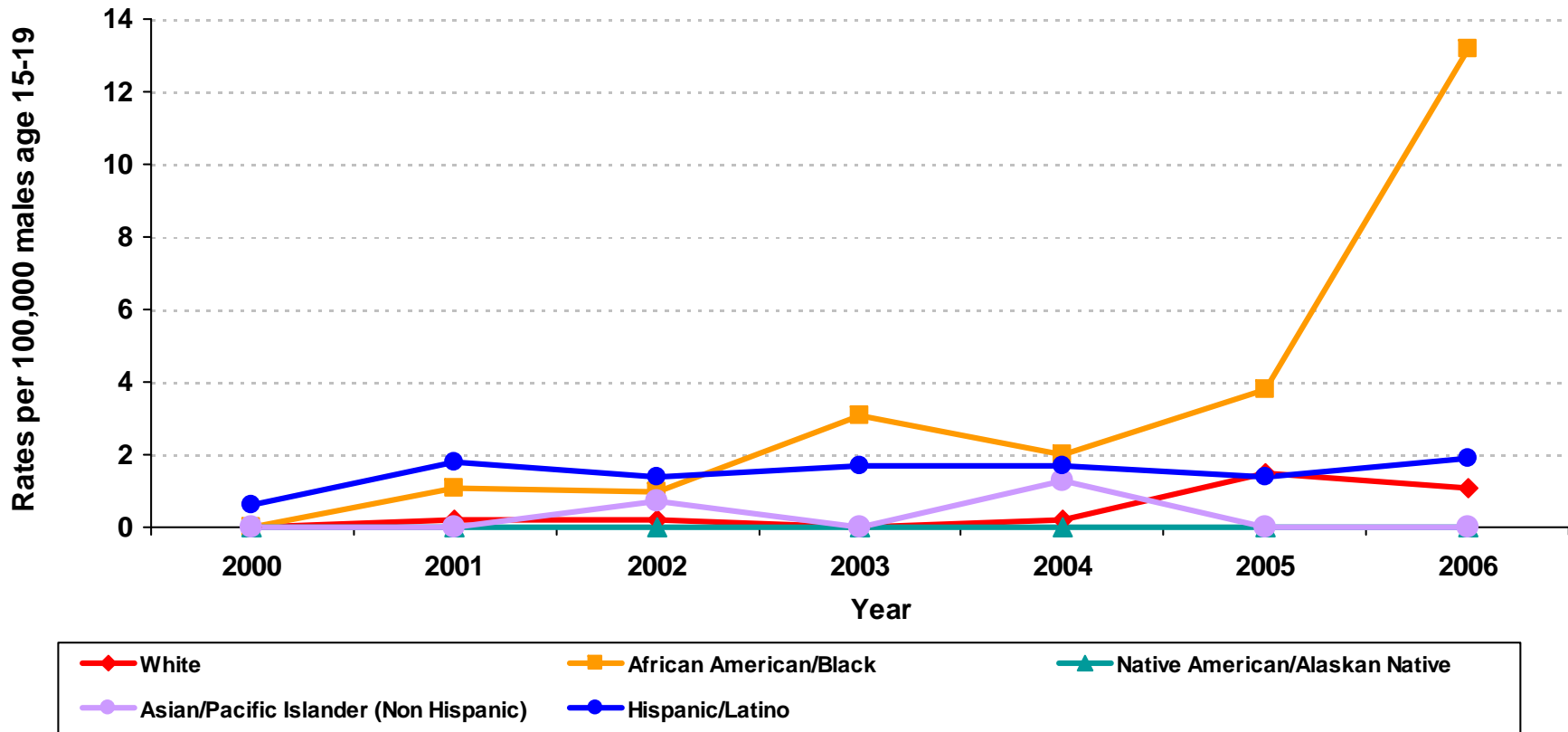
Source: [California Department of Public Health, STD Control Branch](#)
[California Department of Finance, Race/Ethnic Population with Age & Sex Detail, 2000-2050, Sacramento, CA, July 2007.](#)
Prepared by: California Department of Public Health, STD Control Branch

Gonorrhea Rates by Race/Ethnicity For Males Age 15-19 California, 2000 - 2006



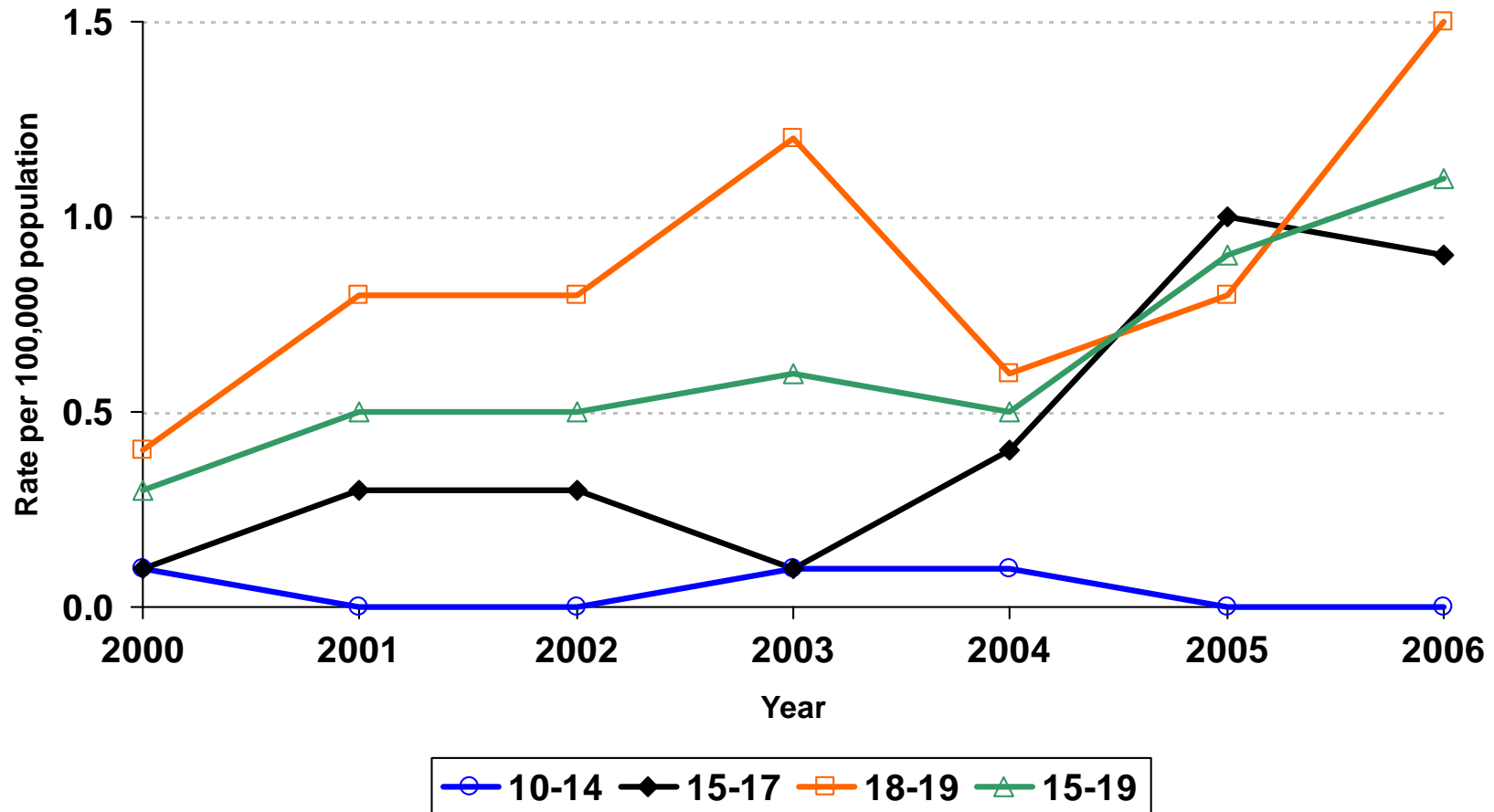
Source: [California Department of Public Health, STD Control Branch](#)
[California Department of Finance, Race/Ethnic Population with Age & Sex Detail, 2000-2050, Sacramento, CA, July 2007.](#)
Prepared by: California Department of Public Health, STD Control Branch

P&S Syphilis Rates by Race/Ethnicity For Males Age 15-19 California, 2000 - 2006



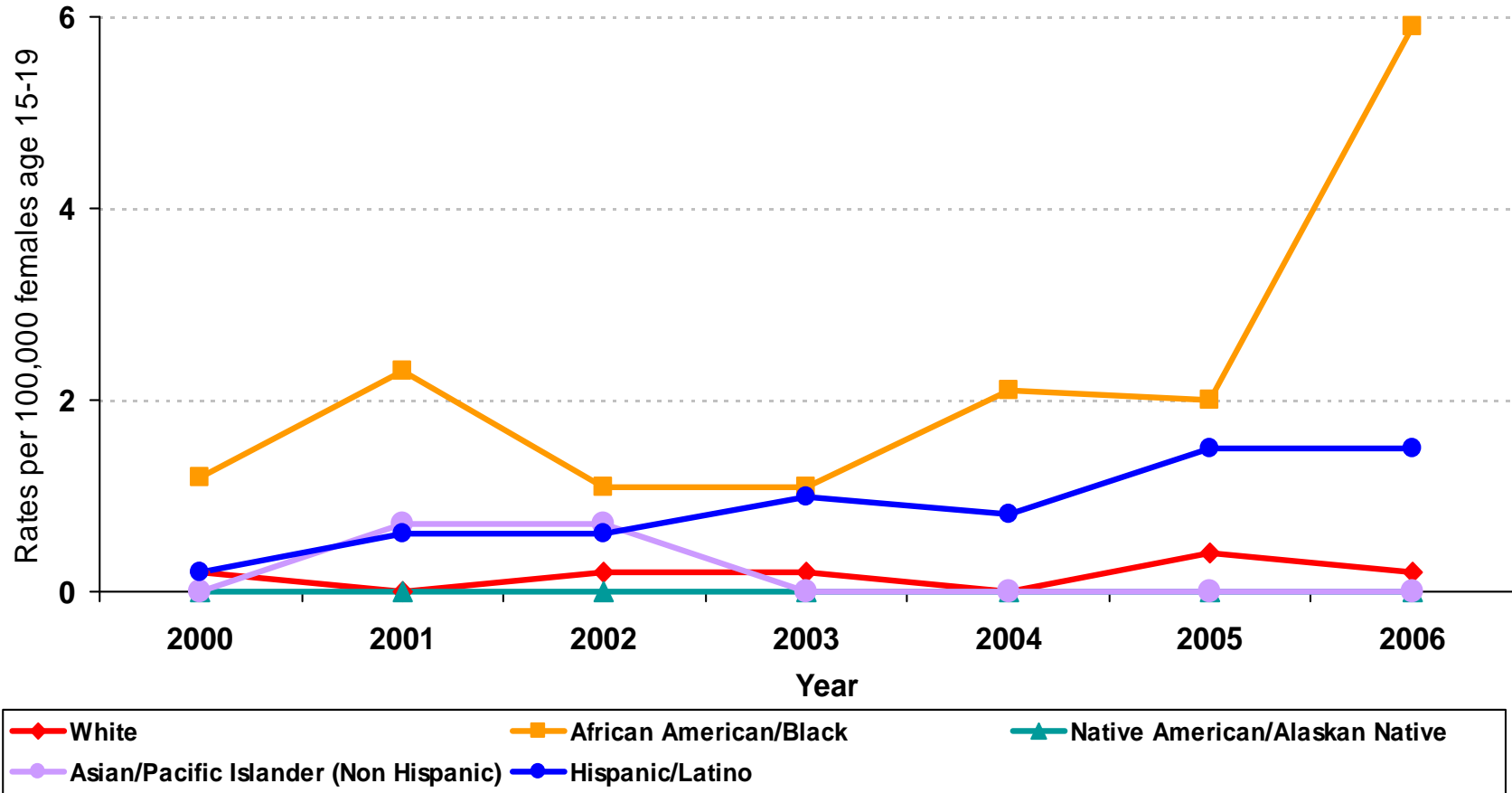
Source: [California Department of Public Health, STD Control Branch](#)
[California Department of Finance, Race/Ethnic Population with Age & Sex Detail, 2000-2050, Sacramento, CA, July 2007.](#)
 Prepared by: California Department of Public Health, STD Control Branch

P&S Syphilis Rates for Adolescent Females by Age Group California, 2000–2006



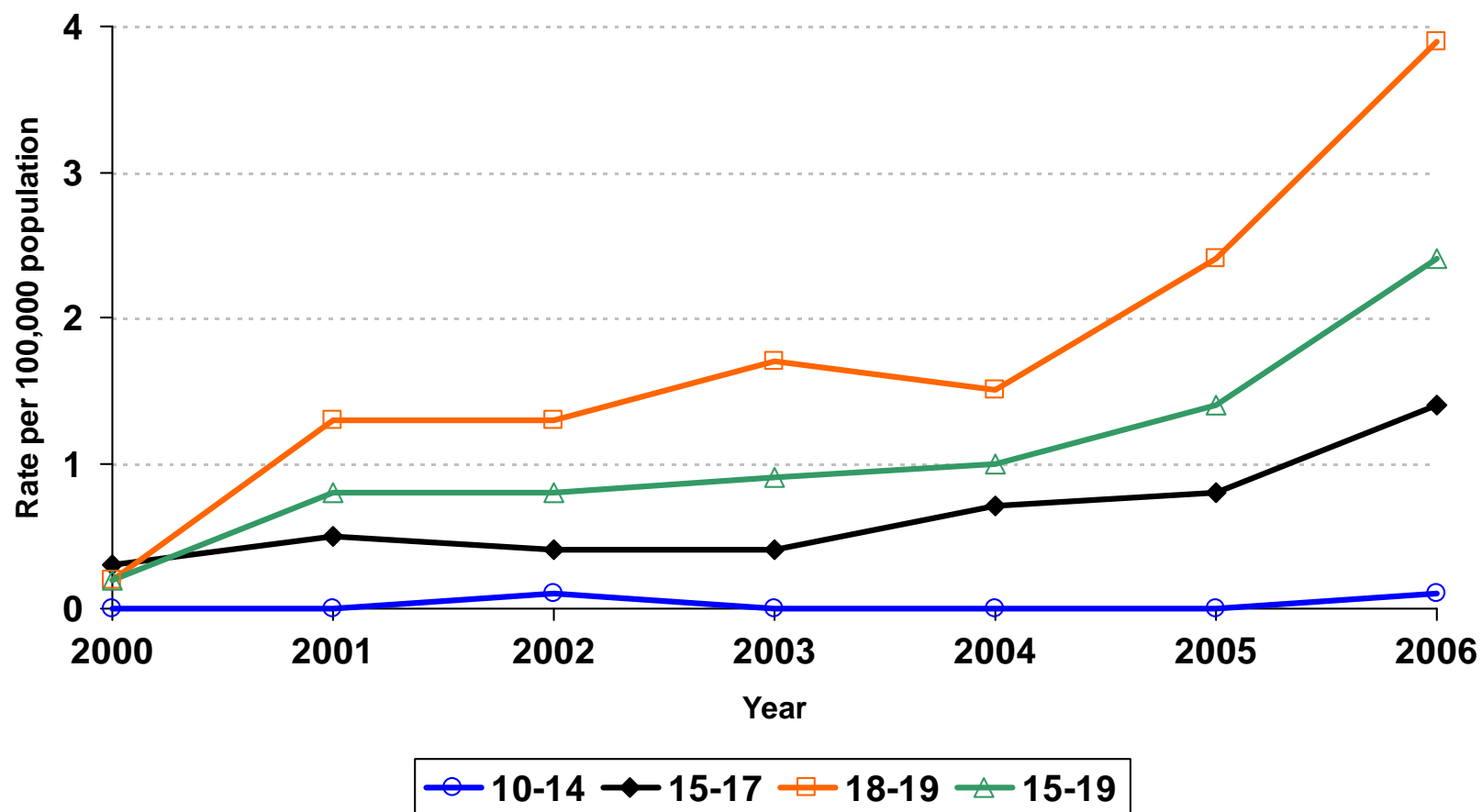
Source: [California Department of Public Health, STD Control Branch](#)
[California Department of Finance, Race/Ethnic Population with Age & Sex Detail, 2000-2050, Sacramento, CA, July 2007.](#)
Prepared by: California Department of Public Health, STD Control Branch

P&S Syphilis Rates by Race/Ethnicity For Females Age 15-19 California, 2000 - 2006



Source: [California Department of Public Health, STD Control Branch](#)
[California Department of Finance, Race/Ethnic Population with Age & Sex Detail, 2000-2050, Sacramento, CA, July 2007.](#)
Prepared by: California Department of Public Health, STD Control Branch

P&S Syphilis Rates for Adolescent Males by Age Group California, 2000–2006



Source: [California Department of Public Health, STD Control Branch](#)
[California Department of Finance, Race/Ethnic Population with Age & Sex Detail, 2000-2050, Sacramento, CA, July 2007.](#)
Prepared by: California Department of Public Health, STD Control Branch

Adolescent STD Data: Chlamydia California

Chlamydia Prevalence Monitoring – Family Planning Clinics, Percent Positive for Adolescent Females by Age Group, California, 2000–2006							
Age Group	2000	2001	2002	2003	2004	2005	2006
10-14	16	9	9	6	7	7	9
15-17	9	8	7	6	7	7	8
18-19	8	8	7	7	8	7	8
15-19	9	8	7	7	8	7	0

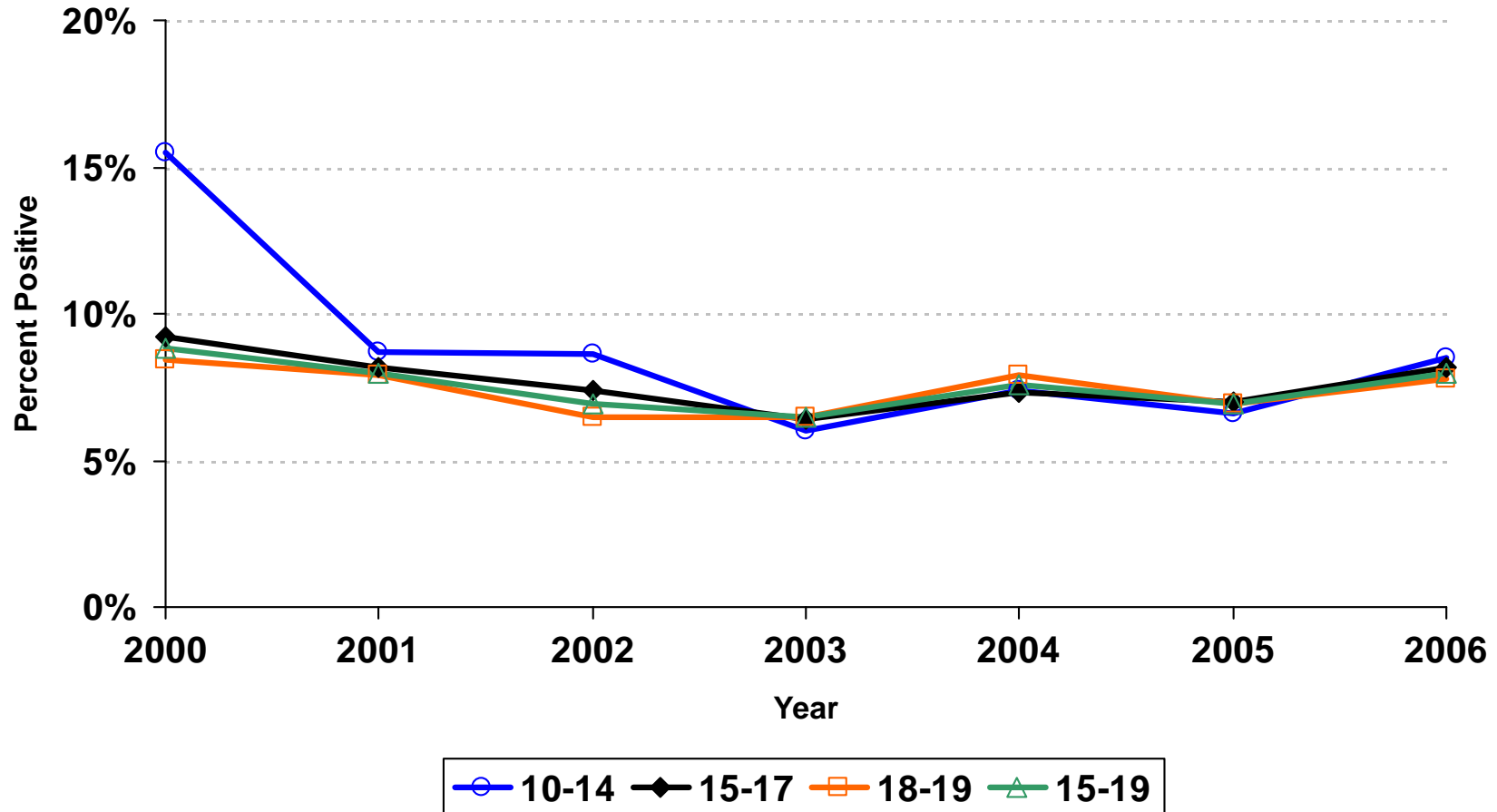
Chlamydia Prevalence Monitoring – STD Clinics, Percent Positive for Adolescent Females by Age Group, California, 2000–2006							
Age Group	2000	2001	2002	2003	2004	2005	2006
10-14	22	13	25	22	20	25	32
15-17	26	23	23	30	22	27	28
18-19	19	22	22	22	23	24	23
15-19	22	22	22	25	23	25	25

Chlamydia Prevalence Monitoring – Juvenile Detention, Percent Positive for Adolescent Females by Age Group, California, 2000–2006							
Age Group	2000	2001	2002	2003	2004	2005	2006
10-14	14	12	12	10	11	12	11
15-17	16	15	15	14	14	14	13
18-19	16	13	15	14	14	15	12
15-19	16	15	15	14	14	14	13

Source: [California Department of Public Health, STD Control Branch; Los Angeles Infertility Prevention Project; and San Francisco Infertility Prevention Project](#)

Prepared by: California Department of Public Health, STD Control Branch

Chlamydia Prevalence Monitoring – Family Planning Clinics Percent Positive for Adolescent Females by Age Group California, 2000–2006

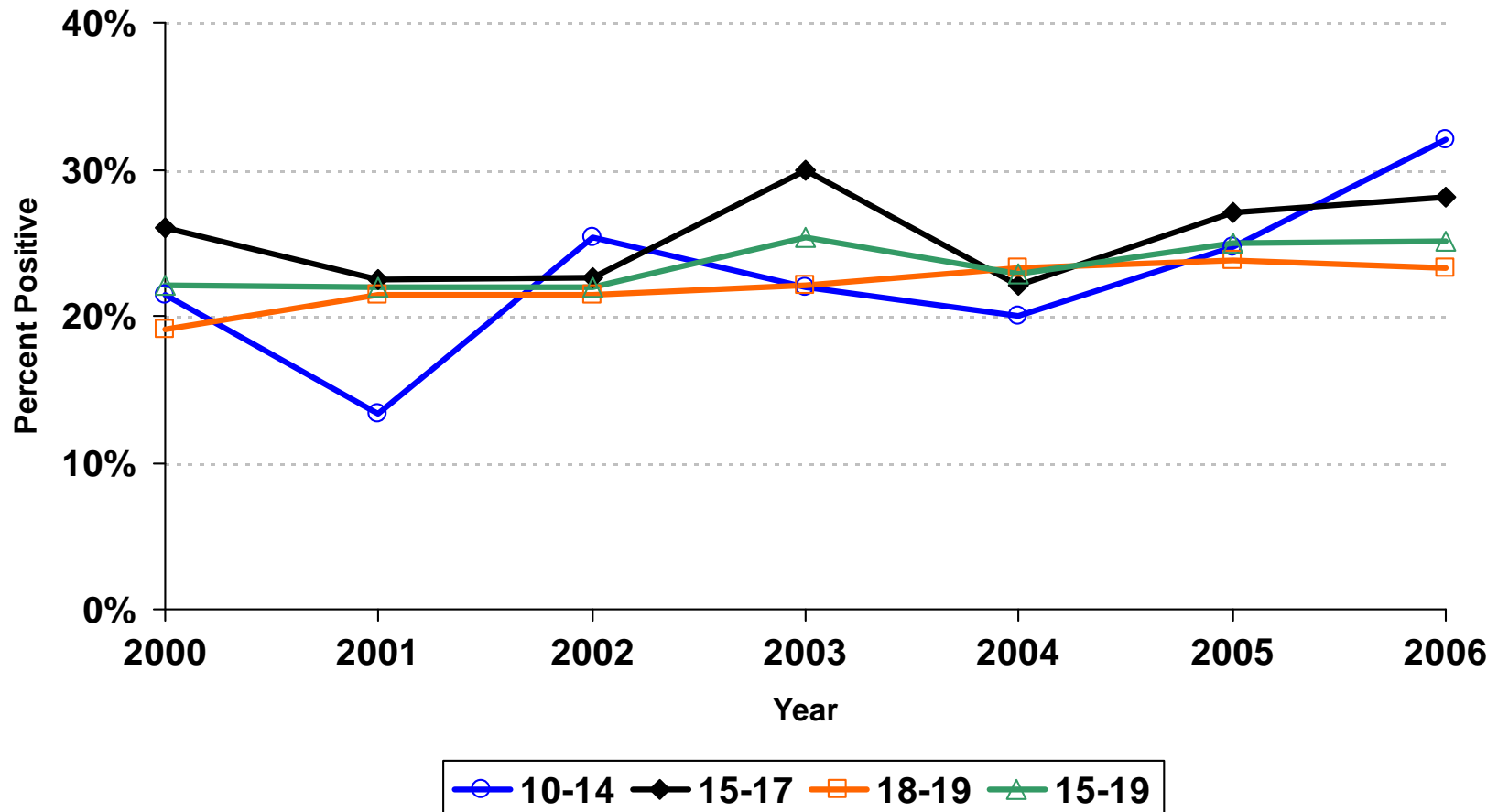


Source: [California Department of Public Health, STD Control Branch; Los Angeles Infertility Prevention Project; and San Francisco Infertility Prevention Project](#)

Prepared by: California Department of Public Health, STD Control Branch

ASHWG Data Integration Subcommittee – January 2009

Chlamydia Prevalence Monitoring – STD Clinics Percent Positive for Adolescent Females by Age Group California, 2000–2006



Source: [California Department of Public Health, STD Control Branch; Los Angeles Infertility Prevention Project; and San Francisco Infertility Prevention Project](#)

Prepared by: California Department of Public Health, STD Control Branch

ASHWG Data Integration Subcommittee – January 2009