



Twenty-Five Years of Crime in the San Diego Region: 1983 through 2007

April 2008

Cynthia Burke, Ph.D., Division Director



401 B Street
Suite 800
San Diego, CA 92101
(619) 699-1900

BOARD OF DIRECTORS



The 18 cities and county government are SANDAG serving as the forum for regional decision-making. SANDAG builds consensus; plans, engineers, and builds public transit; makes strategic plans; obtains and allocates resources; and provides information on a broad range of topics pertinent to the region's quality of life.

CHAIR Hon. Mary Teresa Sessom	FIRST VICE CHAIR Hon. Lori Holt Pfeiler	SECOND VICE CHAIR Hon. Jerome Stocks	EXECUTIVE DIRECTOR Gary L. Gallegos
---	---	--	---

CITY OF CARLSBAD
Hon. Matt Hall, Councilmember
(A) Hon. Bud Lewis, Mayor
(A) Hon. Ann Kulchin, Mayor Pro Tem

CITY OF CHULA VISTA
Hon. Cheryl Cox, Mayor
(A) Hon. Jerry Rindone, Deputy Mayor
(A) Hon. John McCann, Councilmember

CITY OF CORONADO
Hon. Phil Monroe, Councilmember
(A) Hon. Carrie Downey, Mayor Pro Tem
(A) Hon. Al Ovrom, Councilmember

CITY OF DEL MAR
Hon. Crystal Crawford, Deputy Mayor
(A) Hon. David Druker, Mayor
(A) Hon. Richard Earnest, Councilmember

CITY OF EL CAJON
Hon. Mark Lewis, Mayor
(A) Hon. Jillian Hanson-Cox, Councilmember

CITY OF ENCINITAS
Hon. Jerome Stocks, Mayor
(A) Hon. Teresa Barth, Councilmember

CITY OF ESCONDIDO
Hon. Lori Holt Pfeiler, Mayor
(A) Hon. Ed Gallo, Councilmember
(A) Hon. Sam Abed, Mayor Pro Tem

CITY OF IMPERIAL BEACH
Hon. Jim Janney, Mayor
(A) Hon. Patricia McCoy, Mayor Pro Tem
(A) Hon. Mayda Winter, Councilmember

CITY OF LA MESA
Hon. Art Madrid, Mayor
(A) Hon. David Allan, Councilmember
(A) Hon. Mark Arapostathis, Councilmember

CITY OF LEMON GROVE
Hon. Mary Teresa Sessom, Mayor
(A) Hon. Jerry Jones, Councilmember
(A) Hon. Jerry Selby, Mayor Pro Tem

CITY OF NATIONAL CITY
Hon. Ron Morrison, Mayor
(A) Hon. Frank Parra, Vice Mayor
(A) Hon. Louie Natividad, Councilmember

CITY OF OCEANSIDE
Hon. Jim Wood, Mayor
(A) Hon. Jerry Kern, Councilmember
(A) Hon. Jack Feller, Councilmember

CITY OF POWAY
Hon. Mickey Cafagna, Mayor
(A) Hon. Robert Emery, Deputy Mayor
(A) Hon. Don Higginson, Councilmember

CITY OF SAN DIEGO
Hon. Jerry Sanders, Mayor
Hon. Jim Madaffer, Councilmember
(A) Hon. Anthony Young, Council President Pro Tem
(A) Hon. Scott Peters, Council President

CITY OF SAN MARCOS
Hon. Jim Desmond, Mayor
(A) Hon. Hal Martin, Vice Mayor
(A) Hon. Rebecca Jones, Councilmember

CITY OF SANTEE
Hon. Jack Dale, Councilmember
(A) Hon. Hal Ryan, Councilmember
(A) Hon. John Minto, Councilmember

CITY OF SOLANA BEACH
Hon. Lesa Heebner, Councilmember
(A) Hon. Dave Roberts, Deputy Mayor
(A) Hon. Mike Nichols, Councilmember

CITY OF VISTA
Hon. Judy Ritter, Councilmember
(A) Hon. Bob Campbell, Councilmember
(A) Hon. Steve Gronke, Councilmember

COUNTY OF SAN DIEGO
Hon. Greg Cox, Chairman
(A) Hon. Pam Slater-Price, Chair Pro Tem
(A) Hon. Ron Roberts, Supervisor
Hon. Dianne Jacob, Vice Chairwoman
(A) Hon. Bill Horn, Supervisor

IMPERIAL COUNTY
(Advisory Member)
Hon. Victor Carrillo, Supervisor
(A) Hon. David Ouzan, Councilmember

CALIFORNIA DEPARTMENT OF TRANSPORTATION
(Advisory Member)
Will Kempton, Director
(A) Pedro Orso-Delgado, District 11 Director

METROPOLITAN TRANSIT SYSTEM
(Advisory Member)
Harry Mathis, Chairman
(A) Hon. Jerry Rindone, Vice Chairman
(A) Hon. Robert Emery, Chair Pro Tem

NORTH COUNTY TRANSIT DISTRICT
(Advisory Member)
Hon. Ed Gallo, Chairman
(A) Hon. Jerome Stocks, Planning Committee Chair
(A) Hon. Chris Orlando, Monitoring Committee Chair

U.S. DEPARTMENT OF DEFENSE
(Advisory Member)
CAPT Steve Wirsching, USN, CEC,
Southwest Division Naval Facilities Engineering Command
(A) CAPT Robert Farley, USN, CEC
Southwest Division Naval Facilities Engineering Command

SAN DIEGO UNIFIED PORT DISTRICT
(Advisory Member)
Laurie Black, Commissioner
(A) Michael Najera, Commissioner

SAN DIEGO COUNTY WATER AUTHORITY
(Advisory Member)
Marilyn Dailey, Commissioner
(A) Mark Muir, Commissioner
(A) Gary Croucher, Commissioner

SOUTHERN CALIFORNIA TRIBAL CHAIRMEN'S ASSOCIATION
(Advisory Member)
Chairman Robert Smith (Pala), SCTCA Chair
(A) Chairman Allen Lawson (San Pasqual)

MEXICO
(Advisory Member)
Hon. Remedios Gómez-Arnau
Cónsul General of Mexico

As of March 19, 2008

TWENTY-FIVE YEARS OF CRIME IN THE SAN DIEGO REGION: 1983 THROUGH 2007

INTRODUCTION

Since 1980, SANDAG has been reporting regional crime statistics for the San Diego region through a cooperative agreement with local law enforcement agencies. This report presents and discusses crime trend data for the past 25 years. Crime rates per 1,000 resident population¹, as well as the actual number of crimes reported, are presented. SANDAG is the only local entity to compile these statistics across the 18 incorporated cities, as well as the unincorporated areas of the county, making this information some of the most frequently requested from SANDAG's Criminal Justice Clearinghouse. These data are useful to local law enforcement agencies as they track the effect of their prevention and response efforts on regional crime rates.

OVERALL CRIME

There was a total of 103,485 Part I (or FBI Index) crimes in the San Diego region in 2007 (Appendix Tables 1 and 5), which equated to 33.40 crimes per 1,000 population (Appendix Table 2). Part I crimes include four violent offenses (homicide, rape, robbery, and aggravated assault) and three property offenses (burglary, larceny, and motor vehicle theft) that are tracked nationwide in a standardized manner by the FBI, with agencies submitting crime data through the Uniform Crime Reporting (UCR) system.

FAST FACTS

- In 2007, the violent crime rate for the San Diego region was at a 25-year low (4.41 per 1,000 residents) and the property crime rate was the second lowest it has been since 1983 (28.99).
- There was an average of 936 larcenies, 470 motor vehicle thefts, 321 burglaries, 163 aggravated assaults, 84 robberies, 14 rapes, and 2 homicides reported to local law enforcement in the San Diego region each week in 2007.
- There were 105 homicides in the San Diego region in 2007, representing the greatest one-year decrease among the seven crime categories. However, gang violence remains a concern for many jurisdictions.
- In 2007, 24 percent of robberies and 15 percent of aggravated assaults involved the use of a firearm.
- One in two burglaries in 2007 involved no forced entry, demonstrating the need for continued crime prevention efforts.
- Over \$266 million worth of property was stolen in 2007, which included currency, jewelry, and electronics, as well as motor vehicles.
- Motor vehicle theft was the only property crime to increase in number over the past year (2%).

¹ The populations used to calculate rates are provided in Appendix Table 20.

VIOLENT CRIME

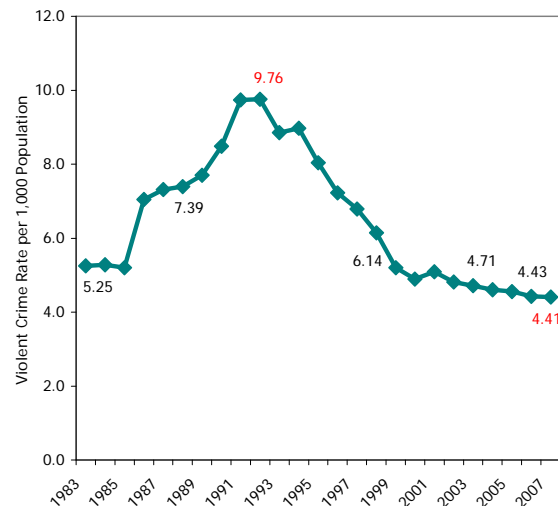
In 2007, there were 13,661 Part I violent crimes reported to law enforcement in the San Diego region (Appendix Tables 1 and 6)². The most common type was aggravated assault, which represented almost two-thirds (62%) of all violent crime in 2007; robbery represented 32 percent, rape 5 percent, and homicide 1 percent (not shown).

As Figure 1 shows, the violent crime rate (per 1,000 population) in the San Diego region began to increase in 1986 (from 5.20 in 1985), reaching a peak of 9.76 in 1992³. Since then, there has been a general decline to 4.41 violent crimes per 1,000 residents in 2007, the lowest rate in the past 25 years. A number of theories have been provided regarding possible factors related to this overall drop in crime since the 1990s, including declining numbers of young males in high crime-associated age groups, legislation which increased jail and prison time for violent offenses, economic factors, and the implementation of effective crime prevention programs.

Across jurisdictions, the 2007 violent crime rate ranged from 1.13 in Coronado to 6.94 in National City (Appendix Table 3 and Appendix Map 1). Over the past year, 13 jurisdictions had lower and 8 had higher violent crime rates, compared to 2006 (3 had numbers too small for valid comparisons and 1 only began compiling data in 2007). National City led local jurisdictions with a 19 percent decrease in its violent crime rate, compared to 2006, with other decreases ranging from 1 percent to 8 percent. Recent efforts by individual departments to address violent crime have included problem-solving

strategies to identify and target specific high-crime areas, specific groups (e.g., gangs committing disproportionate amount of crime), and specific times (e.g., targeted patrols during high-crime hours).

Figure 1
VIOLENT CRIME RATE
LOWEST IN 25 YEARS



SOURCES: SANDAG; California Department of Finance; U.S. Census 1990; U.S. Census 2000

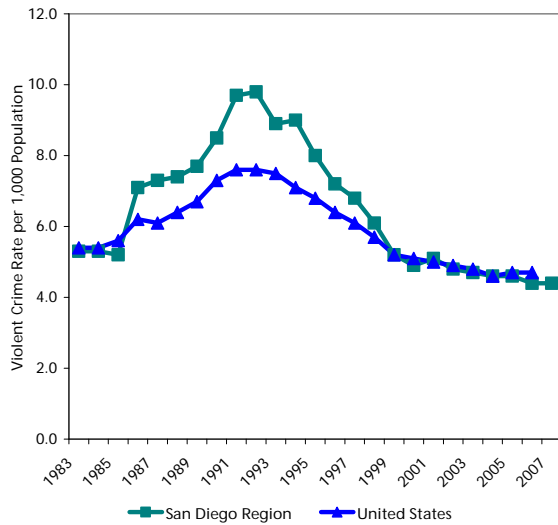
Statistics from the FBI were used to compare changes over time in the violent crime rates reported in the San Diego region to those reported across the United States⁴. As Figure 2 shows, the San Diego region experienced a greater rise in violent crime in the late 1980s and early 1990s, compared to the nation, returning to a similar violent crime rate after 1998. This increase was possibly related to the prevalence of methamphetamine distribution and use in the region during this time period. In 2006, the violent crime rate in the San Diego region was 4.43, versus 4.74 for the nation as a whole.

² The numbers of violent crimes reported in each jurisdiction for 2003 through 2007 are also presented in Appendix Tables 10 through 14.

³ The crime rate/number of crimes in the current year, and 1, 5, 10, 20, and 25 years ago, are presented, as well as the highest and lowest rate/number over the past 25 years.

⁴ National statistics are currently only available through 2006. However, according to the Police Executive Research Forum (www.policeforum.org), the recent increases in some violent crime types in large cities across the country slowed significantly for the first six months of 2007.

Figure 2
SAN DIEGO REGION HAD A GREATER INCREASE IN VIOLENT CRIME THAN THE NATION IN LATE 1980s



SOURCES: SANDAG; Federal Bureau of Investigation

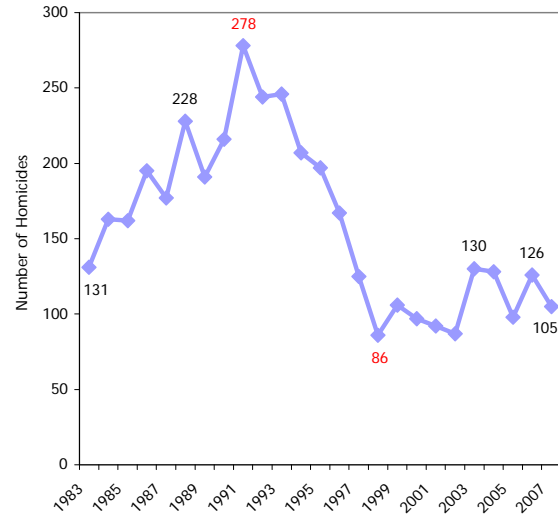
Each jurisdiction also documents violent crimes committed against senior citizens (individuals 60 years of age and older). In 2007, there were 508 violent crimes reported against senior citizens, an increase of 13 percent from the previous year. These crimes included 9 homicides, 6 rapes, 228 robberies, and 265 aggravated assaults (not shown).

Homicide

Over the past 25 years, the number of homicides in the San Diego region peaked at 278 in 1991 and decreased fairly steadily to a low of 86 in 1998 (Figure 3). Between 1998 and 2002, the number of homicides ranged between 86 and 106, with an increase to 130 in 2003. Since then, there have been almost annual fluctuations, with 105 homicides reported in 2007, a 17 percent decrease from 2006, when there were 126 (Appendix Table 1). As reported in SANDAG's CJ Bulletin *San Diego Crime Victims and Suspects in 2006* (available on the SANDAG Web site), in homicide cases for which motive could be determined, 31 percent were related to an

argument, 23 percent to other motives, 17 percent to gang activity, 13 percent to domestic violence, 9 percent to robbery, and 7 percent to drugs. Motive information for 2007 homicides will be available later in the 2008 calendar year.

Figure 3
NUMBER OF HOMICIDES DECREASED IN PAST YEAR

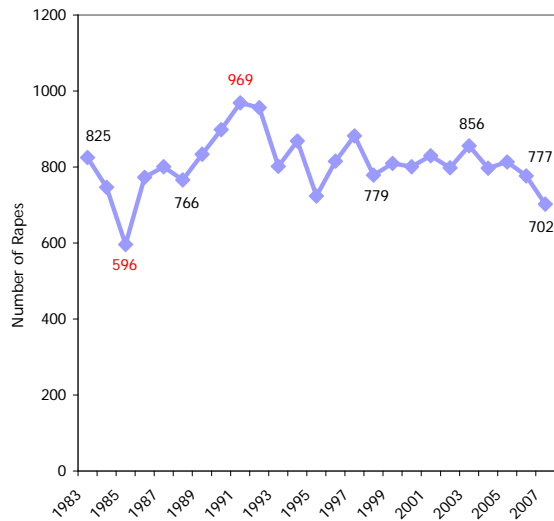


SOURCE: SANDAG

Rape

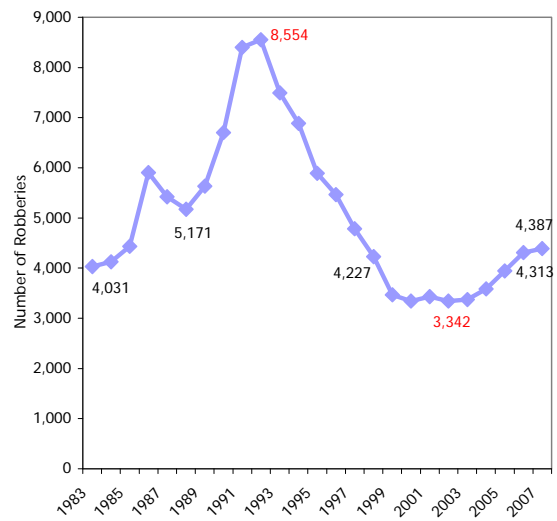
There were 702 rapes reported in the San Diego region in 2007, which was the second smallest number in the past 25 years and a 10 percent decrease from 2006 (Appendix Table 1). As Figure 4 shows, the number of rapes reported to law enforcement has remained relatively stable over the past 25 years, compared to the number of homicides during the same period of time. The greatest number of rapes reported to law enforcement was 969 in 1991 and the lowest was 596 in 1985. In 2007, 75 percent of the rapes reported to law enforcement were completed and 25 percent were attempted (not shown).

Figure 4
LESS VARIABILITY IN NUMBER OF RAPES
COMPARED TO OTHER VIOLENT CRIMES



SOURCE: SANDAG

Figure 5
NUMBER OF ROBBERIES INCREASED
FOR FIFTH YEAR IN A ROW



SOURCE: SANDAG

Robbery

While the number of homicides and rapes decreased over the past year, the number of robberies increased for the fifth year in a row. There were 4,387 robberies in the region in 2007, compared to 4,313 in 2006, a two percent increase (Figure 5 and Appendix Table 1). Over the past 25 years, the number of robberies has shown two declining trends, with the most recent beginning in 1993 (after the greatest number, 8,554, was reported in 1992) and generally continuing through 2002 to 3,342, when the number began increasing again.

As part of UCR reporting requirements, the type of weapon used during a robbery and the location of the robbery are documented. In 2007, 24 percent of robberies involved a firearm, 11 percent a knife or other cutting instrument, 10 percent another weapon (i.e., bat, stick, or other blunt object), and 56 percent were considered strong-arm. Just under half (49%) occurred out in the open, on streets, or in other public places (not shown).

For the 15 jurisdictions with robbery numbers large enough for comparison in 2006 and 2007, 10 experienced a one-year increase (ranging from 5% to 35%), 4 experienced a decrease (ranging from 3% to 29%), and 1 remained the same (Appendix Tables 13 and 14). According to local law enforcement, the San Diego County Police Chiefs' and Sheriff's Association has directed robbery as a focused priority in the region in 2008, with efforts to include public information campaigns, crime prevention efforts, and targeted enforcement.

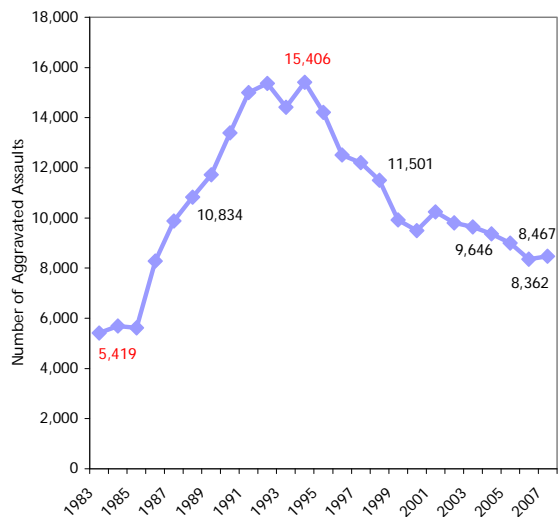
Aggravated Assault

One in 366 individuals in the San Diego region was the victim of an aggravated assault in 2007 (not shown). As Figure 6 and Appendix Table 1 show, there were slightly more aggravated assaults reported in the region in 2007, compared to one year earlier (1%), but still less than 5, 10, 15, or 20 years prior. Over the past 25 years, the number of aggravated assaults followed an upward trend from 1983 (5,419) that peaked in 1994 (15,406). This overall increase was due at least

in part to 1986 legislation requiring agencies to report all domestic violence incidents. Since 1994, there has been an overall decline to 8,467 in 2007.

Like robbery, the type of weapon used in aggravated assaults is documented for reporting purposes. In 2007, 38 percent of aggravated assaults involved the use of another weapon (e.g., bat, stick, or other blunt object); 28 percent hands, feet, or fists; 20 percent a knife or other cutting instrument; and 15 percent a firearm (not shown).

Figure 6
NUMBER OF AGGRAVATED ASSAULTS INCREASED OVER ONE-YEAR PERIOD



SOURCE: SANDAG

Compared to robbery, in which two-thirds of the jurisdictions experienced a one-year increase, there was greater variability across agencies in terms of the number of aggravated assaults reported in 2007, compared to 2006 (Appendix Tables 13 and 14). Specifically, 12 agencies reported one-year increases (ranging from 2% to 75%) and 9 reported decreases (ranging from 1% to 27%).

In 2007, there were almost three simple assaults for every aggravated assault that was reported (for a total of 21,275 simple assaults), which are not included in these Part I statistics. Simple assaults include all assaults and attempted assaults which are not of an aggravated nature and do not result in serious injury to the victim. There was variability in the type of assaults reported across jurisdictions, with 60 percent of assaults in Valley Center categorized as simple, compared to 91 percent in Coronado (the regional average was 72%). Compared to 2006, the number of simple assaults decreased four percent (from 22,220 in 2006) (not shown).

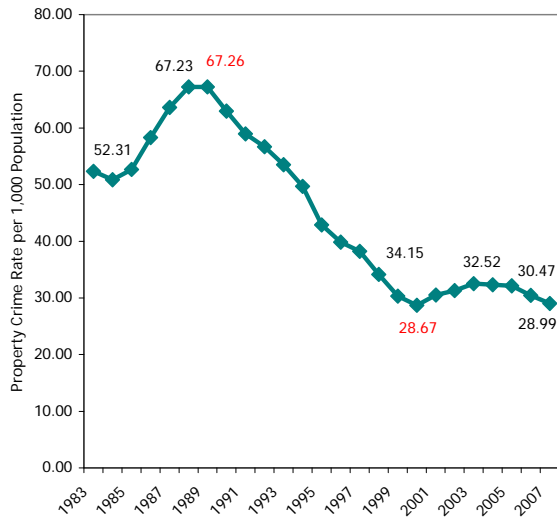
PROPERTY CRIME

With 89,824 property crimes reported (Appendix Tables 1 and 7), one in every 34 residents was the victim of a property crime in 2007 and almost 9 in every 10 crimes (87%) reported to law enforcement in the region represented property crime (not shown). With the fourth consecutive annual decrease, the property crime rate was at its second lowest point in the past 25 years (28.99) (Figure 7). Over half (54%) of all property crimes in 2007 were larcenies, 27 percent were motor vehicle thefts, and 19 percent were burglaries (not shown).

Across the region, 20 jurisdictions had a lower property crime rate in 2007 than 2006 and 4 had a higher rate. These 2007 rates ranged from 9.40 (in Ramona) to 47.71 (in Del Mar) per 1,000 (Appendix Table 4 and Appendix Map 2)⁵. When interpreting these statistics, it is important to note that a variety of factors can affect a jurisdiction's crime rate, such as daytime populations and accessibility.

⁵ The numbers of property crimes reported in each jurisdiction for 2003 through 2007 are also presented in Appendix Tables 10 through 14.

Figure 7
PROPERTY CRIME RATE DECREASED FOR FOURTH YEAR

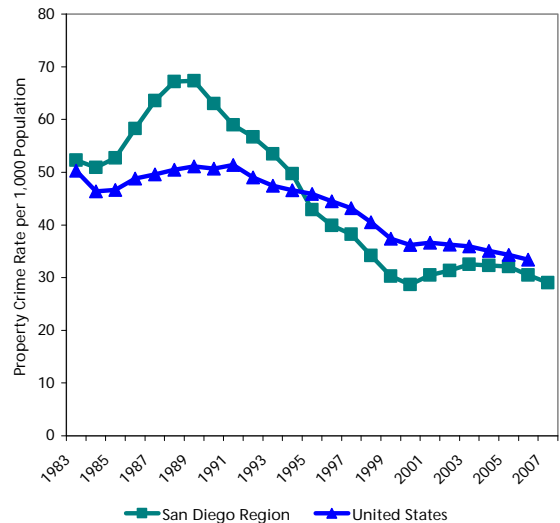


SOURCES: SANDAG; California Department of Finance; U.S. Census 1990; U.S. Census 2000

In terms of dollar value, over \$266 million worth of property was stolen in the San Diego region in 2007, compared to approximately \$293 million in 2006 (Appendix Table 17). Forty percent (40%) of this property, which was valued at almost \$108 million, was recovered in 2007 (Appendix Tables 18 and 19).

Figure 8 compares property crime rates reported to law enforcement in the San Diego region from 1983 through 2007 to national statistics from 1983 through 2006 (the most recent available, as previously noted). In 1983, the San Diego region had a similar property crime rate to the nation, but beginning in 1984, experienced a greater increase than the U.S. overall. The local property crime rate began to decline in the early 1990s, however, falling and remaining below the national average since the mid 1990s. In 2006, the property crime rate for the region was 30.47, compared to 33.35 for the nation.

Figure 8
SAN DIEGO REGION HAS HAD A LOWER PROPERTY CRIME RATE THAN THE NATION SINCE 1995



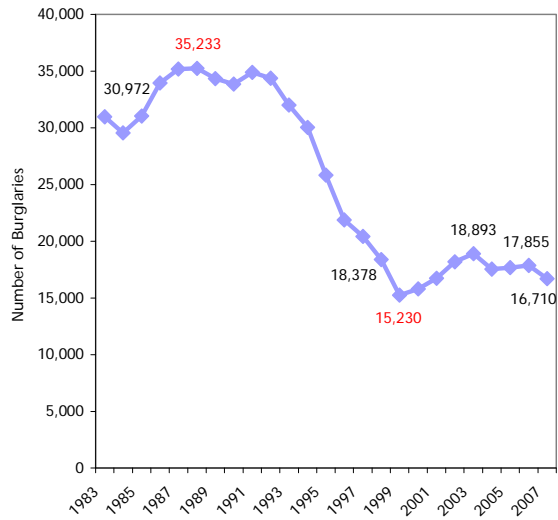
SOURCES: SANDAG; Federal Bureau of Investigation

Burglary

The number of burglaries (including residential and non-residential) reported in the region began an upward trend in 1985, reaching a 25-year high of 35,233 in 1988 (Figure 9). Three years later, an eight-year decline began, reaching a low of 15,230 in 1999. Since then, the number of burglaries has generally increased, but there was a one-year decline of six percent between 2006 and 2007. Of the 16,710 burglaries reported in the San Diego region in 2007, over half (57%) were residential, which equated to 1 in every 114 households being burglarized. In 2007, 51 percent of all burglaries involved no forced entry, demonstrating the importance of ongoing crime prevention efforts (29% involved a forced entry and 19% were unsuccessful/ attempted) (not shown).

Across the 24 jurisdictions with more than 30 incidents of burglary in 2006 and 2007, the majority (22) reported one-year decreases in the number (ranging from 1% to 33%) and only two had increases (of 6% and 7%) (Appendix Tables 13 and 14).

**Figure 9
NUMBER OF BURGLARIES DECREASED
OVER PAST YEAR**

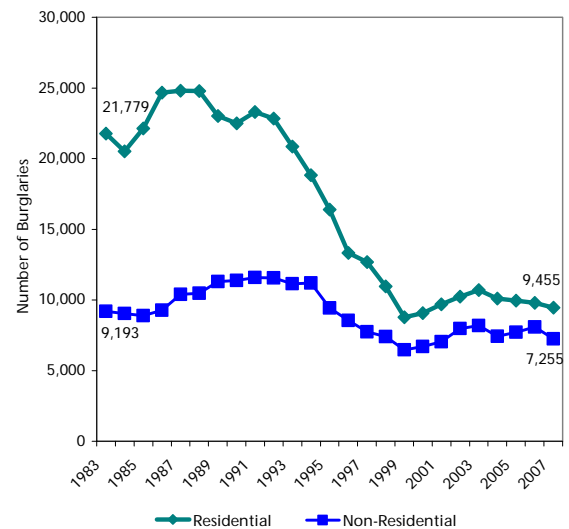


SOURCE: SANDAG

While the number of residential and non-residential burglaries were both at a 25-year low in 1999, residential burglaries have decreased to a greater degree since 1983 (57%), compared to non-residential burglaries (21%), despite the large increase during the same time period in the number of occupied households in the region (53%, from 704,703 in 1983 to 1,081,234 in 2007)⁶ (Figure 10 and Appendix Tables 10 through 14).

⁶ Comparable statistics regarding the number of business locations are not available.

**Figure 10
RESIDENTIAL BURGLARIES DECREASED
MORE OVER PAST 25 YEARS, COMPARED
TO NON-RESIDENTIAL BURGLARIES**



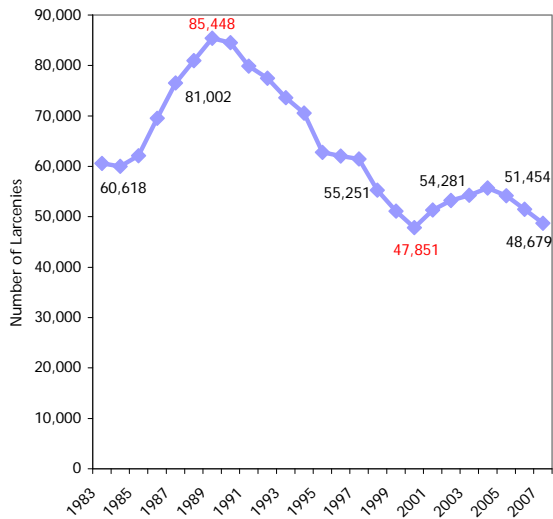
SOURCE: SANDAG

Larceny

Larceny, or theft, is the most common crime, with one reported to law enforcement about every ten minutes in 2007 (not shown). Beginning in 1985, the number of larcenies reported in the San Diego region began an upward trend, peaking at 85,448 in 1989, and then decreasing to a low of 47,851 in 2000 (Figure 11). Since then, there were four years of consecutive increases, with decreases the past three years to 48,679 in 2007.

The most common larceny type (historically and in 2007) was theft from inside motor vehicles (46%), with the second most common from buildings (19%). Local law enforcement who were surveyed as part of this report preparation noted that more drug-using offenders are motivated to take purses, wallets, and laptop computers from vehicles in an effort to steal others' identities. Most larcenies (61%) in 2007 involved property valued at \$400 or less (not shown).

Figure 11
LARCENIES DECREASED FOR THIRD CONSECUTIVE YEAR



SOURCE: SANDAG

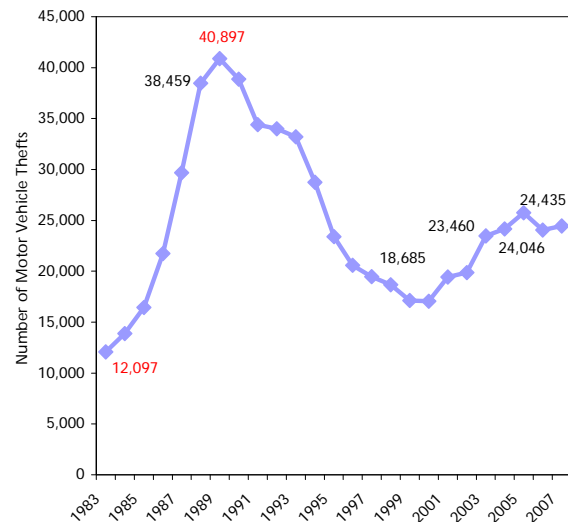
Across the jurisdictions, 18 reported one-year decreases in the number of reported larcenies (ranging from <1% to 34%) and 6 had increases (ranging from 2% to 13%) (Appendix Tables 13 and 14).

Motor Vehicle Theft

Beginning in 1984, the number of motor vehicles stolen in the San Diego region also began to increase, reaching a high in 1989 of 40,897 (Figure 12). This upward trend was followed by an overall decrease to 17,038 in 2000. Since then, there have been increases six of the past seven years, with 24,435 vehicles stolen in 2007, an increase of two percent from 2006. This equates to one in every 96 registered motor vehicles. In terms of dollar amount, the value of these stolen vehicles was estimated at nearly \$156 million and represented over half (58%) of the value of total property stolen (not shown).

Across the jurisdictions, just over half (58% of 24) had one-year increases in the number of reported stolen vehicles (ranging from 2% to 38%) and 42 percent (11 jurisdictions) had decreases (ranging from 1% to 26%) (Appendix Tables 13 and 14). Some of the jurisdictions with lower rates acknowledge the successfulness of targeting car prowlers at night in specific neighborhoods, as well as efforts undertaken by the Regional Auto Theft Task Force (RATT).

Figure 12
VEHICLE THEFT ONLY PROPERTY CRIME TO INCREASE FROM 2006



SOURCE: SANDAG

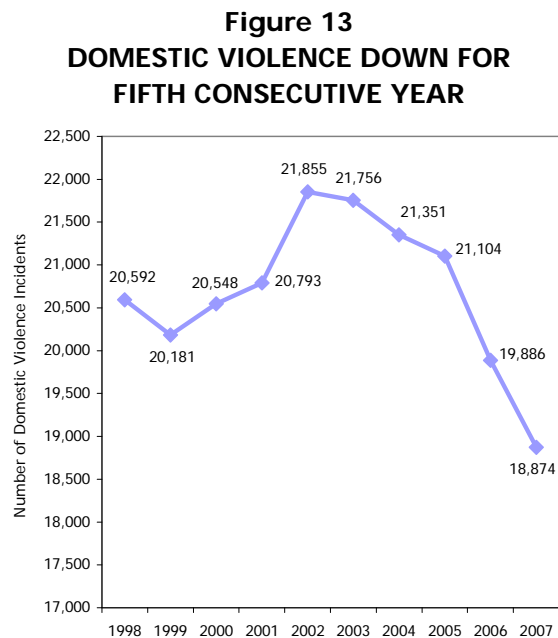
Arson

Unlike other FBI Index offenses, when arson is committed in concert with another FBI Index offense, both incidents must be reported, which is why arson is presented separately from other property crime statistics. There were 458 arsons reported in 2007, which was lower than in 2006 (when there were 488). Thirty-eight percent (38%) of arsons in 2007 were of structures and 62 percent were categorized as mobile and other non-structural property types (not shown).

DOMESTIC VIOLENCE

Law enforcement agencies also track domestic violence incidents, some of which are included in the previously reported numbers in this bulletin. For example, a domestic violence incident could include a Part I violent crime (e.g., aggravated assault) or some type of property crime (e.g., burglary or vandalism). Over the past ten years⁷, the number of domestic violence incidents has varied from a high of 21,855 in 2002 to a low of 18,874 in 2007 (Figure 13). This represented the fifth consecutive annual decrease.

Across the 19 jurisdictions (statistics are not available for the unincorporated areas separately), 3 agencies reported one-year increases in the number of domestic violence incidents (ranging from 2% to 66%), 14 reported decreases (ranging from <1% to 28%), and 2 had a small number of incidents across the years, limiting the types of valid comparisons that could be made (Appendix Table 9).



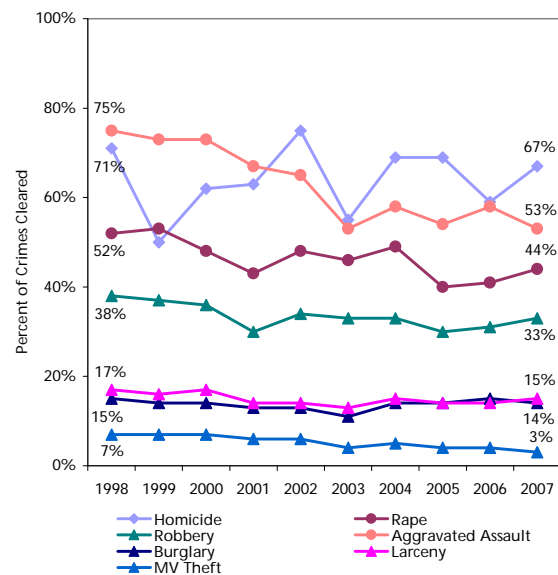
SOURCE: SANDAG

⁷ Due to changing legislation regarding mandated reporting, only ten years of trend data are compared for statistical purposes.

CLEARANCE RATES

A crime is cleared or solved for crime-reporting purposes when at least one person is arrested and charged with the offense⁸. Not surprisingly, the clearance rates in 2007 varied by crime type, with violent crimes cleared more frequently than property crimes. Overall, 46 percent of violent crimes that were open for investigation in the region were cleared (with a range across jurisdictions of 19% to 65%), compared to 11 percent of property crimes (with a range of 9% to 18%) (Appendix Tables 15 and 16). As Figure 14 shows, the crimes of homicide and aggravated assault have consistently had the highest clearance rates, which is related to the fact that these crimes more frequently involve individuals with face-to-face contact. While the motor vehicle theft clearance rate is the lowest of the seven Part I crimes, it is important to note that the vehicle recovery rate is considerably higher (94%) (not shown).

Figure 14
CLEARANCE RATES VARY BY CRIME



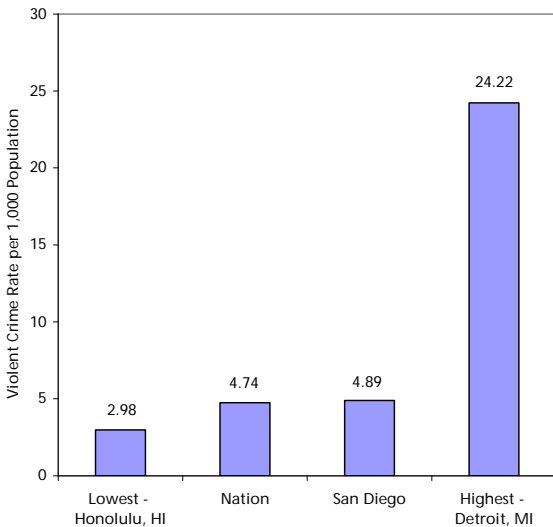
SOURCE: SANDAG

⁸ It is important to note that a crime can occur in one calendar year, but be cleared in that year or a future year.

HOW DOES SAN DIEGO COMPARE TO OTHER U.S. CITIES?

National information for crime rates for 31 U.S. cities (rather than counties or regions) with populations of 500,000 or more is currently available for calendar year 2006 (one year prior to the other statistics presented in this report). In 2006, the City of San Diego⁹ was the seventh largest city in the U.S., with a population of 1.31 million. As Figures 15 and 16 show, the City of San Diego was one of the safest places to live, compared to other large metropolitan areas in terms of both violent (fourth lowest, following Honolulu, HI, San Jose, CA, and El Paso, TX) and property crime (fifth lowest, following New York, NY, San Jose, CA, Los Angeles, CA, and El Paso, TX).

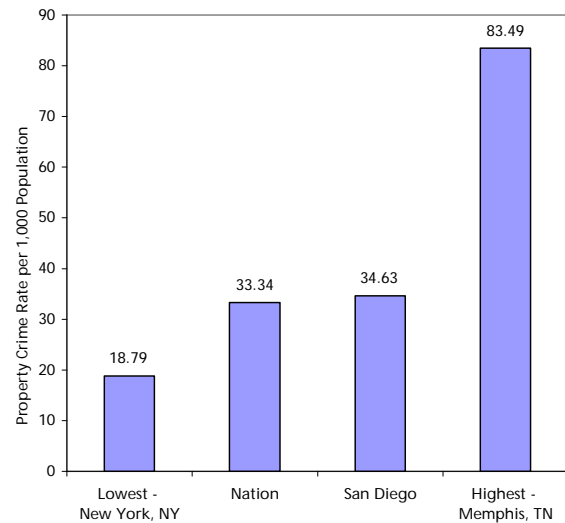
Figure 15
CITY OF SAN DIEGO HAD FOURTH LOWEST VIOLENT CRIME RATE IN 2006



SOURCES: SANDAG; Federal Bureau of Investigation

⁹ In 2006, 46 percent of the region's violent crime and 49 percent of the property crime was reported by the San Diego Police Department.

Figure 16
CITY OF SAN DIEGO HAD FIFTH LOWEST PROPERTY CRIME RATE IN 2006



SOURCES: SANDAG; Federal Bureau of Investigation

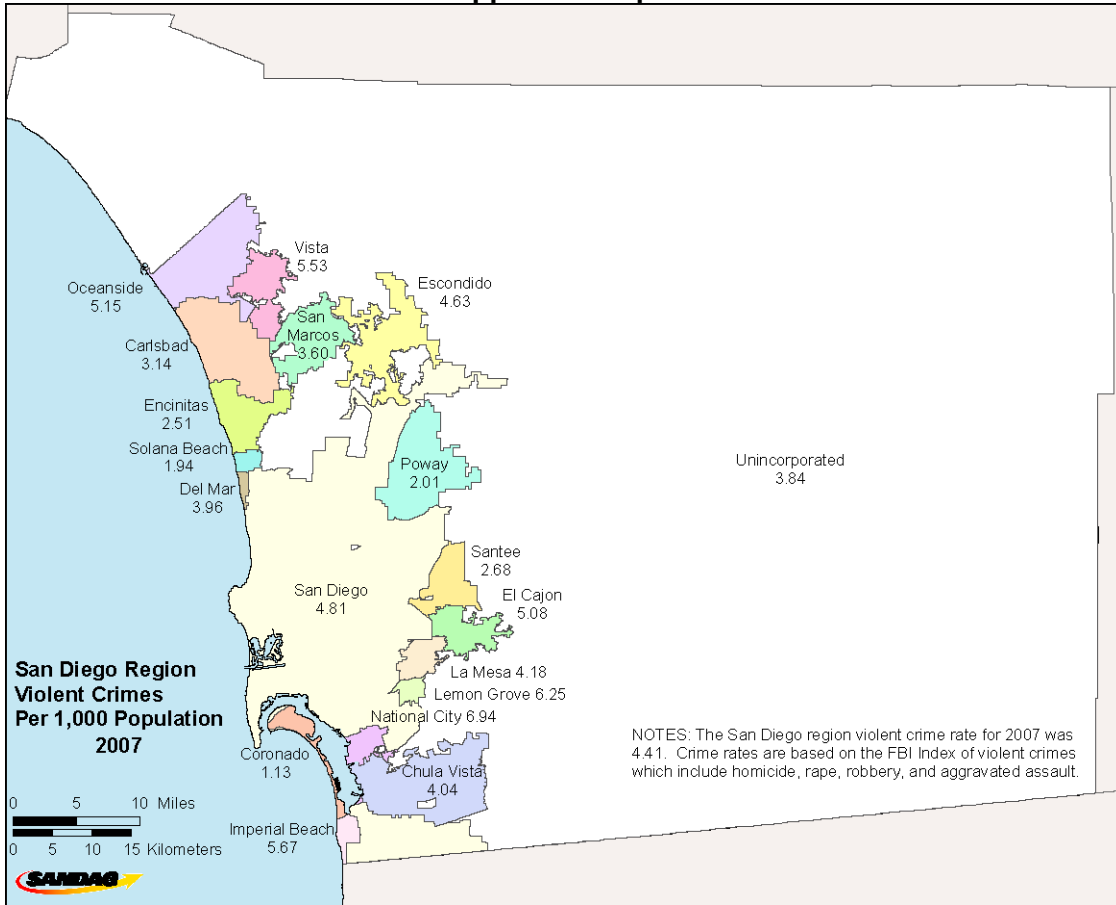
SUMMARY

Compared to 25 years earlier, the San Diego region is a safer place to live in terms of both violent and property crime. Local law enforcement is committed to continuing to effectively collaborate to identify and address crime issues in our communities, including the prevalence of gang-related violence and increase in robberies.

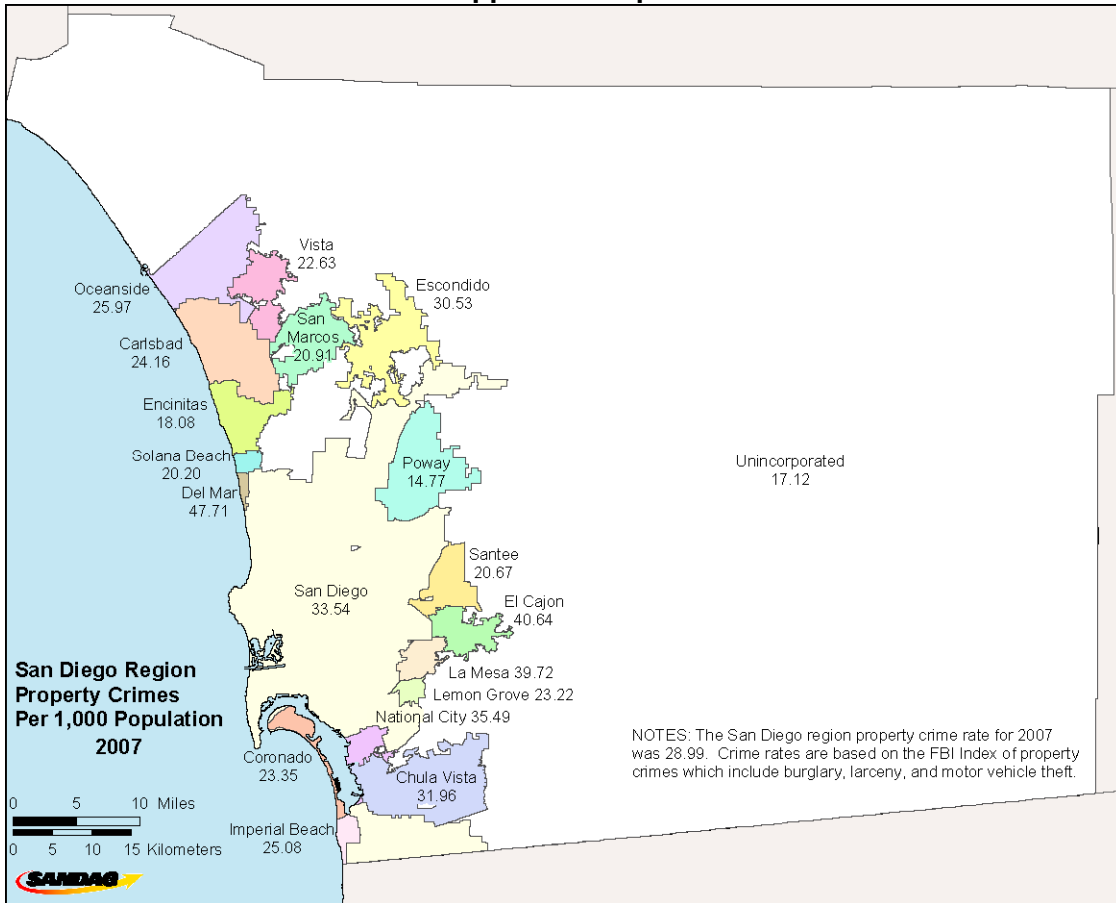
For those interested in more detailed 2007 statistics, please contact Donna Allnutt at (619) 699-6912, and for those interested in more recent statistics for a specific area of San Diego County, as well as maps of specific areas, please visit the ARJIS (Automated Regional Justice Information System) Web site at www.arjis.org.

APPENDIX

Appendix Map 1



Appendix Map 2



**Appendix Table 1
NUMBER OF CRIMES BY OFFENSE
San Diego Region, 2003, 2006, and 2007**

	2003	2006	2007	Change	
				2003-2007	2006-2007
Homicide	130	126	105	-19%	-17%
Rape	856	777	702	-18%	-10%
Robbery	3,375	4,313	4,387	30%	2%
Aggravated Assault	9,646	8,362	8,467	-12%	1%
Violent Crime Total	14,007	13,578	13,661	-2%	1%
Burglary	18,893	17,855	16,710	-12%	-6%
Larceny Theft	54,281	51,454	48,679	-10%	-5%
Motor Vehicle Theft	23,460	24,046	24,435	4%	2%
Property Crime Total	96,634	93,355	89,824	-7%	-4%
FBI INDEX	110,641	106,933	103,485	-6%	-3%

SOURCE: SANDAG

Appendix Table 2
FBI INDEX CRIME RATES PER 1,000 POPULATION BY JURISDICTION
San Diego Region, 2003, 2006, and 2007

	2003	2006	2007	Change	
				2003-2007	2006-2007
Carlsbad	27.19	28.22	27.30	<1%	-3%
Chula Vista	39.34	35.70	36.01	-8%	1%
Coronado	24.04	23.54	24.48	2%	4%
El Cajon	50.45	42.16	45.71	-9%	8%
Escondido	40.73	36.36	35.17	-14%	-3%
La Mesa	41.14	48.98	43.89	7%	-10%
National City	54.80	48.87	42.43	-23%	-13%
Oceanside	38.61	33.20	31.12	-19%	-6%
San Diego	42.01	39.52	38.35	-9%	-3%
Sheriff - Total	26.02	25.13	22.72	-13%	-10%
Del Mar	58.19	66.30	51.67	-11%	-22%
Encinitas	24.91	21.66	20.60	-17%	-5%
Imperial Beach	36.05	33.19	30.78	-15%	-7%
Lemon Grove	38.29	37.96	29.47	-23%	-22%
Poway	18.72	17.54	16.78	-10%	-4%
San Marcos	26.35	26.33	24.51	-7%	-7%
Santee	27.04	22.02	23.33	-14%	6%
Solana Beach	23.77	22.73	22.13	-7%	-3%
Vista	32.04	34.76	28.16	-12%	-19%
Unincorporated	23.88	22.97	20.97	-12%	-9%
4S Ranch	--	--	--	--	--
Alpine	25.21	23.53	23.69	-6%	1%
Fallbrook	24.12	28.54	23.74	-2%	-17%
Lakeside	25.48	24.31	21.49	-16%	-12%
Ramona	21.05	14.74	12.46	-41%	-15%
Spring Valley	24.93	29.48	26.14	5%	-11%
Valley Center	28.29	24.90	25.62	-9%	3%
TOTAL	37.23	34.90	33.40	-10%	-4%

NOTES: The FBI Crime Index includes homicide, rape, robbery, aggravated assault, burglary, larceny, and motor vehicle theft. Percent changes are based upon computed crime rates rounded to the precision level of two decimal places. Populations used to compute crime rates reflect the most current California Department of Finance estimates. "Sheriff-Total" includes the contract cities and the unincorporated area served by the San Diego County Sheriff's Department. Camp Pendleton is not included. "Unincorporated" includes 4S Ranch (July through December 2007), Alpine, Fallbrook, Lakeside, Ramona, Spring Valley, and Valley Center, as well as the unincorporated areas for which crime data are not individually shown (Campo, Encinitas Uninc., Imperial Beach Uninc., Julian, Lemon Grove Uninc., Pine Valley, Poway Uninc., Ranchita, San Marcos Uninc., Santee Uninc., and Vista Uninc.). Because crime data reporting for 4S Ranch did not begin until July 2007, annual rates are not computed at this time.

SOURCES: California Department of Finance; SANDAG

Appendix Table 3
VIOLENT CRIME RATE PER 1,000 POPULATION BY JURISDICTION
San Diego Region, 2003, 2006, and 2007

	2003	2006	2007	Change	
				2003-2007	2006-2007
Carlsbad	2.93	3.34	3.14	7%	-6%
Chula Vista	3.87	4.24	4.04	4%	-5%
Coronado	1.32	1.00	1.13	--	--
El Cajon	5.72	4.88	5.08	-11%	4%
Escondido	4.26	5.06	4.63	9%	-8%
La Mesa	3.10	4.21	4.18	35%	-1%
National City	9.11	8.57	6.94	-24%	-19%
Oceanside	6.40	5.35	5.15	-20%	-4%
San Diego	5.76	4.89	4.81	-16%	-2%
Sheriff - Total	3.10	3.49	3.82	23%	9%
Del Mar	2.21	5.75	3.96	--	--
Encinitas	2.45	2.59	2.51	2%	-3%
Imperial Beach	5.20	6.09	5.67	9%	-7%
Lemon Grove	5.69	6.70	6.25	10%	-7%
Poway	1.56	2.04	2.01	29%	-1%
San Marcos	3.22	3.73	3.60	12%	-3%
Santee	2.40	2.76	2.67	11%	-3%
Solana Beach	1.50	1.95	1.94	--	--
Vista	4.09	4.72	5.53	35%	17%
Unincorporated	3.00	3.24	3.84	28%	19%
4S Ranch	--	--	--	--	--
Alpine	2.38	2.60	3.25	37%	25%
Fallbrook	2.20	2.86	3.68	67%	29%
Lakeside	3.05	3.77	4.32	42%	15%
Ramona	2.69	2.27	3.07	14%	35%
Spring Valley	3.91	4.02	4.83	24%	20%
Valley Center	3.63	3.86	5.25	45%	36%
TOTAL	4.71	4.43	4.41	-6%	<-1%

NOTES: FBI Index violent crimes include homicide, rape, robbery, and aggravated assault. Percent changes are based upon computed crime rates rounded to the precision level of two decimal places. Populations used to compute crime rates reflect the most current California Department of Finance estimates. "Sheriff-Total" includes the contract cities and the unincorporated area served by the San Diego County Sheriff's Department. Camp Pendleton is not included. "Unincorporated" includes 4S Ranch (July through December 2007), Alpine, Fallbrook, Lakeside, Ramona, Spring Valley, and Valley Center, as well as the unincorporated areas for which crime data are not individually shown (Campo, Encinitas Uninc., Imperial Beach Uninc., Julian, Lemon Grove Uninc., Pine Valley, Poway Uninc., Ranchita, San Marcos Uninc., Santee Uninc., and Vista Uninc.). Because crime data reporting for 4S Ranch did not begin until July 2007, annual rates are not computed at this time. Percent changes are not presented for crime rates based upon offense numbers of 30 or less.

SOURCES: California Department of Finance; SANDAG

Appendix Table 4
PROPERTY CRIME RATE PER 1,000 POPULATION BY JURISDICTION
San Diego Region, 2003, 2006, and 2007

	2003	2006	2007	Change	
				2003-2007	2006-2007
Carlsbad	24.26	24.89	24.16	<-1%	-3%
Chula Vista	35.46	31.47	31.96	-10%	2%
Coronado	22.71	22.53	23.35	3%	4%
El Cajon	44.73	37.28	40.64	-9%	9%
Escondido	36.46	31.30	30.53	-16%	-2%
La Mesa	38.04	44.77	39.72	4%	-11%
National City	45.70	40.30	35.49	-22%	-12%
Oceanside	32.21	27.85	25.97	-19%	-7%
San Diego	36.25	34.63	33.54	-7%	-3%
Sheriff - Total	22.92	21.64	18.90	-18%	-13%
Del Mar	55.97	60.55	47.71	-15%	-21%
Encinitas	22.46	19.07	18.08	-20%	-5%
Imperial Beach	30.85	27.09	25.12	-19%	-7%
Lemon Grove	32.60	31.26	23.22	-29%	-26%
Poway	17.16	15.50	14.77	-14%	-5%
San Marcos	23.14	22.61	20.91	-10%	-8%
Santee	24.64	19.26	20.67	-16%	7%
Solana Beach	22.28	20.78	20.20	-9%	-3%
Vista	27.95	30.04	22.63	-19%	-25%
Unincorporated	20.88	19.74	17.12	-18%	-13%
4S Ranch	--	--	--	--	--
Alpine	22.83	20.93	20.44	-10%	-2%
Fallbrook	21.93	25.69	20.06	-9%	-22%
Lakeside	22.43	20.54	17.17	-23%	-16%
Ramona	18.37	12.48	9.40	-49%	-25%
Spring Valley	21.02	25.46	21.31	1%	-16%
Valley Center	24.66	21.04	20.37	-17%	-3%
TOTAL	32.52	30.47	28.99	-11%	-5%

NOTES: FBI Index property crimes include burglary, larceny, and motor vehicle theft. Percent changes are based upon computed crime rates rounded to the precision level of two decimal places. Populations used to compute crime rates reflect the most current California Department of Finance estimates. "Sheriff-Total" includes the contract cities and the unincorporated area served by the San Diego County Sheriff's Department. Camp Pendleton is not included. "Unincorporated" includes 4S Ranch (July through December 2007), Alpine, Fallbrook, Lakeside, Ramona, Spring Valley, and Valley Center, as well as the unincorporated areas for which crime data are not individually shown (Campo, Encinitas Uninc., Imperial Beach Uninc., Julian, Lemon Grove Uninc., Pine Valley, Poway Uninc., Ranchita, San Marcos Uninc., Santee Uninc., and Vista Uninc.). Because crime data reporting for 4S Ranch did not begin until July 2007, annual rates are not computed at this time. Percent changes are not presented for crime rates based upon offense numbers of 30 or less.

SOURCES: California Department of Finance; SANDAG

**Appendix Table 5
NUMBER OF FBI INDEX CRIMES BY JURISDICTION
San Diego Region, 2003, 2006, and 2007**

	2003	2006	2007	Change	
				2003-2007	2006-2007
Carlsbad	2,465	2,784	2,766	12%	-1%
Chula Vista	7,882	7,981	8,200	4%	3%
Coronado	635	539	562	-11%	4%
El Cajon	4,894	4,085	4,446	-9%	9%
Escondido	5,645	5,120	4,986	-12%	-3%
La Mesa	2,299	2,732	2,469	7%	-10%
National City	3,286	2,987	2,593	-21%	-13%
Oceanside	6,580	5,809	5,498	-16%	-5%
San Diego	53,748	51,600	50,497	-6%	-2%
Sheriff - Total	21,284	21,190	19,469	-9%	-8%
Del Mar	263	300	235	-11%	-22%
Encinitas	1,527	1,361	1,303	-15%	-4%
Imperial Beach	999	915	853	-15%	-7%
Lemon Grove	975	963	750	-23%	-22%
Poway	936	887	853	-9%	-4%
San Marcos	1,680	2,021	1,956	16%	-3%
Santee	1,454	1,205	1,287	-11%	7%
Solana Beach	318	303	297	-7%	-2%
Vista	2,983	3,284	2,674	-10%	-19%
Unincorporated	10,149	9,951	9,261	-9%	-7%
4S Ranch	--	--	79	--	--
Alpine	700	661	686	-2%	4%
Fallbrook	1,175	1,428	1,199	2%	-16%
Lakeside	1,353	1,290	1,145	-15%	-11%
Ramona	729	527	455	-38%	-14%
Spring Valley	1,747	2,083	1,862	7%	-11%
Valley Center	624	535	576	-8%	8%
California Highway Patrol	144	126	133	-8%	6%
California State University San Marcos	33	48	66	100%	38%
San Diego State University	695	589	618	-11%	5%
University of California San Diego	574	682	476	-17%	-30%
San Diego Harbor Police	352	595	602	71%	1%
California State Parks and Recreation	125	66	104	-17%	58%
TOTAL	110,641	106,933	103,485	-6%	-3%

NOTES: The FBI Crime Index includes homicide, rape, robbery, aggravated assault, burglary, larceny, and motor vehicle theft. "Sheriff-Total" includes contract cities and the unincorporated area served by the San Diego County Sheriff's Department. Camp Pendleton is not included. "Unincorporated" includes 4S Ranch (July through December 2007), Alpine, Fallbrook, Lakeside, Ramona, Spring Valley, and Valley Center, as well as the unincorporated areas for which crime data are not individually shown (Campo, Encinitas Uninc., Imperial Beach Uninc., Julian, Lemon Grove Uninc., Pine Valley, Poway Uninc., Ranchita, San Marcos Uninc., Santee Uninc., and Vista Uninc.).

SOURCE: SANDAG

**Appendix Table 6
NUMBER OF VIOLENT CRIMES BY JURISDICTION
San Diego Region, 2003, 2006, and 2007**

	2003	2006	2007	Change	
				2003-2007	2006-2007
Carlsbad	266	329	318	20%	-3%
Chula Vista	776	947	921	19%	-3%
Coronado	35	23	26	--	--
El Cajon	555	473	494	-11%	4%
Escondido	591	713	657	11%	-8%
La Mesa	173	235	235	36%	0%
National City	546	524	424	-22%	-19%
Oceanside	1,090	936	910	-17%	-3%
San Diego	7,366	6,391	6,330	-14%	-1%
Sheriff - Total	2,535	2,942	3,277	29%	11%
Del Mar	10	26	18	--	--
Encinitas	150	163	159	6%	-2%
Imperial Beach	144	168	157	9%	-7%
Lemon Grove	145	170	159	10%	-6%
Poway	78	103	102	31%	-1%
San Marcos	205	286	287	40%	<1%
Santee	129	151	147	14%	-3%
Solana Beach	20	26	26	--	--
Vista	381	446	525	38%	18%
Unincorporated	1,273	1,403	1,697	33%	21%
4S Ranch	--	--	9	--	--
Alpine	66	73	94	42%	29%
Fallbrook	107	143	186	74%	30%
Lakeside	162	200	230	42%	15%
Ramona	93	81	112	20%	38%
Spring Valley	274	284	344	26%	21%
Valley Center	80	83	118	48%	42%
California Highway Patrol	11	16	8	--	--
California State University San Marcos	1	2	0	--	--
San Diego State University	32	25	30	--	--
University of California San Diego	7	3	5	--	--
San Diego Harbor Police	13	16	21	--	--
California State Parks and Recreation	10	3	5	--	--
TOTAL	14,007	13,578	13,661	-2%	1%

NOTES: FBI Index violent crimes include homicide, rape, robbery, and aggravated assault. "Sheriff-Total" includes the contract cities and the unincorporated area served by the San Diego County Sheriff's Department. Camp Pendleton is not included. "Unincorporated" includes 4S Ranch (July through December 2007), Alpine, Fallbrook, Lakeside, Ramona, Spring Valley, and Valley Center, as well as the unincorporated areas for which crime data are not individually shown (Campo, Encinitas Uninc., Imperial Beach Uninc., Julian, Lemon Grove Uninc., Pine Valley, Poway Uninc., Ranchita, San Marcos Uninc., Santee Uninc., and Vista Uninc.). Percent changes are not presented for offense numbers of 30 or less.

SOURCE: SANDAG

Appendix Table 7
NUMBER OF PROPERTY CRIMES BY JURISDICTION
San Diego Region, 2003, 2006, and 2007

	2003	2006	2007	Change	
				2003-2007	2006-2007
Carlsbad	2,199	2,455	2,448	11%	<-1%
Chula Vista	7,106	7,034	7,279	2%	3%
Coronado	600	516	536	-11%	4%
El Cajon	4,339	3,612	3,952	-9%	9%
Escondido	5,054	4,407	4,329	-14%	-2%
La Mesa	2,126	2,497	2,234	5%	-11%
National City	2,740	2,463	2,169	-21%	-12%
Oceanside	5,490	4,873	4,588	-16%	-6%
San Diego	46,382	45,209	44,167	-5%	-2%
Sheriff - Total	18,749	18,248	16,192	-14%	-11%
Del Mar	253	274	217	-14%	-21%
Encinitas	1,377	1,198	1,144	-17%	-5%
Imperial Beach	855	747	696	-19%	-7%
Lemon Grove	830	793	591	-29%	-25%
Poway	858	784	751	-12%	-4%
San Marcos	1,475	1,735	1,669	13%	-4%
Santee	1,325	1,054	1,140	-14%	8%
Solana Beach	298	277	271	-9%	-2%
Vista	2,602	2,838	2,149	-17%	-24%
Unincorporated	8,876	8,548	7,564	-15%	-12%
4S Ranch	--	--	70	--	--
Alpine	634	588	592	-7%	1%
Fallbrook	1,068	1,285	1,013	-5%	-21%
Lakeside	1,191	1,090	915	-23%	-16%
Ramona	636	446	343	-46%	-23%
Spring Valley	1,473	1,799	1,518	3%	-16%
Valley Center	544	452	458	-16%	1%
California Highway Patrol	133	110	125	-6%	14%
California State University San Marcos	32	46	66	106%	43%
San Diego State University	663	564	588	-11%	4%
University of California San Diego	567	679	471	-17%	-31%
San Diego Harbor Police	339	579	581	71%	<1%
California State Parks and Recreation	115	63	99	-14%	57%
TOTAL	96,634	93,355	89,824	-7%	-4%

NOTES: FBI Index property crimes include burglary, larceny, and motor vehicle theft. "Sheriff-Total" includes the contract cities and the unincorporated area served by the San Diego County Sheriff's Department. Camp Pendleton is not included. "Unincorporated" includes 4S Ranch (July through December 2007), Alpine, Fallbrook, Lakeside, Ramona, Spring Valley, and Valley Center, as well as the unincorporated areas for which crime data are not individually shown (Campo, Encinitas Uninc., Imperial Beach Uninc., Julian, Lemon Grove Uninc., Pine Valley, Poway Uninc., Ranchita, San Marcos Uninc., Santee Uninc., and Vista Uninc.).

SOURCE: SANDAG

**Appendix Table 8
NUMBER OF CRIMES BY OFFENSE
San Diego Region, 1998-2007**

	Homicide	Rape	Robbery	Aggravated Assault	Residential Burglary	Non-Residential Burglary	Total Burglary	Larceny Over \$400	Larceny \$400 and Under	Total Larceny	Motor Vehicle Theft	FBI Crime Index	California Crime Index	Population
1998	86	779	4,227	11,501	10,966	7,412	18,378	16,484	38,767	55,251	18,685	108,907	53,656	2,702,800
1999	106	810	3,468	9,915	8,772	6,458	15,230	15,820	35,263	51,083	17,113	97,725	46,642	2,751,000
2000	97	801	3,347	9,504	9,066	6,711	15,777	15,457	32,394	47,851	17,038	94,415	46,564	2,813,833
2001	92	830	3,430	10,237	9,681	7,044	16,725	17,164	34,156	51,320	19,421	102,055	50,735	2,863,657
2002	87	798	3,342	9,805	10,236	7,963	18,199	18,568	34,684	53,252	19,884	105,367	52,115	2,920,010
2003	130	856	3,375	9,646	10,706	8,187	18,893	18,179	36,102	54,281	23,460	110,641	56,360	2,971,805
2004	128	797	3,588	9,367	10,108	7,437	17,545	19,293	36,376	55,669	24,172	111,266	55,597	3,013,014
2005	98	814	3,943	8,996	9,948	7,720	17,668	19,892	34,309	54,201	25,755	111,475	57,274	3,038,579
2006	126	777	4,313	8,362	9,783	8,072	17,855	19,657	31,797	51,454	24,046	106,933	55,479	3,064,113
2007	105	702	4,387	8,467	9,455	7,255	16,710	18,750	29,929	48,679	24,435	103,485	54,806	3,098,269

NOTES: The FBI Crime Index includes homicide, rape, robbery, and aggravated assault in the violent category and burglary, larceny, and motor vehicle theft in the property category. The California Crime Index (CCI) includes all FBI Index crimes except larceny theft.

SOURCE: SANDAG

Appendix Table 9
NUMBER OF DOMESTIC VIOLENCE INCIDENTS BY JURISDICTION
San Diego Region, 2003, 2006, and 2007

	2003	2006	2007	Change	
				2003-2007	2006-2007
Carlsbad	395	472	438	11%	-7%
Chula Vista	1,881	1,841	1,818	-3%	-1%
Coronado	57	50	83	46%	66%
El Cajon	719	634	537	-25%	-15%
Escondido	882	1,020	930	5%	-9%
La Mesa	379	363	347	-8%	-4%
National City	684	479	351	-49%	-27%
Oceanside	1,998	2,310	2,405	20%	4%
San Diego	10,526	8,673	8,137	-23%	-6%
Sheriff - Total	4,210	3,951	3,718	-12%	-6%
Del Mar	9	27	9	--	--
Encinitas	208	223	177	-15%	-21%
Imperial Beach	261	235	170	-35%	-28%
Lemon Grove	187	165	163	-13%	-1%
Poway	195	147	145	-26%	-1%
San Marcos	373	373	291	-22%	-22%
Santee	281	276	275	-2%	<-1%
Solana Beach	31	38	28	--	--
Vista	505	543	502	-1%	-8%
Unincorporated	2,160	1,924	1,958	-9%	2%
TOTAL	21,756	19,886	18,874	-13%	-5%

NOTES: "Sheriff-Total" includes the contract cities and the unincorporated area served by the San Diego County Sheriff's Department. Camp Pendleton is not included. "Unincorporated" includes 4S Ranch (July through December 2007), Alpine, Fallbrook, Lakeside, Ramona, Spring Valley, and Valley Center, as well as the unincorporated areas for which crime data are not individually shown (Campo, Encinitas Uninc., Imperial Beach Uninc., Julian, Lemon Grove Uninc., Pine Valley, Poway Uninc., Ranchita, San Marcos Uninc., Santee Uninc., and Vista Uninc.). The individual unincorporated areas in the Sheriff's jurisdiction are not required to report domestic violence to the State DOJ. Total includes a relatively small number of incidents reported by the California Department of Parks and Recreation, California Highway Patrol, California State University San Marcos, San Diego Harbor Police, San Diego State University, and University of California San Diego. Percent changes are not presented for offense numbers of 30 or less.

SOURCE: SANDAG

Appendix Table 10
NUMBER OF CRIMES BY OFFENSE BY JURISDICTION
San Diego Region, 2003

	Homicide	Rape	Robbery	Aggravated Assault	Residential Burglary	Non-Residential Burglary	Total Burglary	Larceny Over \$400	Larceny \$400 and Under	Total Larceny	Motor Vehicle Theft	Arson	FBI Crime Index	California Crime Index
Carlsbad	4	14	64	184	240	256	496	493	952	1,445	258	13	2,465	1,020
Chula Vista	7	48	249	472	606	398	1,004	1,137	2,817	3,954	2,148	44	7,882	3,928
Coronado	0	5	3	27	73	31	104	144	280	424	72	11	635	211
El Cajon	4	43	154	354	557	330	887	689	1,611	2,300	1,152	26	4,894	2,594
Escondido	5	46	161	379	499	464	963	952	2,142	3,094	997	32	5,645	2,551
La Mesa	2	12	66	93	198	160	358	367	847	1,214	554	15	2,299	1,085
National City	9	33	155	349	132	205	337	407	1,000	1,407	996	13	3,286	1,879
Oceanside	8	63	332	687	650	464	1,114	1,010	2,627	3,637	739	20	6,580	2,943
San Diego	65	406	1,626	5,269	4,925	3,151	8,076	9,155	16,584	25,739	12,567	238	53,748	28,009
Sheriff - Total	26	178	550	1,781	2,787	2,600	5,387	3,306	6,380	9,686	3,676	159	21,284	11,598
Del Mar	0	3	3	4	35	34	69	60	66	126	58	1	263	137
Encinitas	0	10	40	100	157	172	329	288	516	804	244	7	1,527	723
Imperial Beach	0	8	34	102	139	97	236	119	319	438	181	11	999	561
Lemon Grove	1	4	50	90	90	142	232	110	251	361	237	3	975	614
Poway	2	3	11	62	83	146	229	193	336	529	100	12	936	407
San Marcos	3	18	46	138	166	274	440	248	517	765	270	12	1,680	915
Santee	0	15	18	96	117	176	293	252	572	824	208	9	1,454	630
Solana Beach	0	3	5	12	40	63	103	70	87	157	38	1	318	161
Vista	2	30	122	227	405	430	835	397	896	1,293	474	26	2,983	1,690
Unincorporated	18	84	221	950	1,555	1,066	2,621	1,569	2,820	4,389	1,866	77	10,149	5,760
4S Ranch	--	--	--	--	--	--	--	--	--	--	--	--	--	--
Alpine	0	1	11	54	88	76	164	126	198	324	146	1	700	376
Fallbrook	1	10	21	75	223	155	378	197	364	561	129	3	1,175	614
Lakeside	1	11	26	124	154	114	268	215	440	655	268	0	1,353	698
Ramona	2	5	7	79	79	105	184	116	282	398	54	1	729	331
Spring Valley	0	25	81	168	231	168	399	202	428	630	444	0	1,747	1,117
Valley Center	1	2	13	64	76	93	169	108	151	259	116	6	624	365
California Highway Patrol	0	0	0	11	0	2	2	7	46	53	78	0	144	91
California State University San Marcos	0	0	0	1	0	6	6	6	19	25	1	0	33	8
San Diego State University	0	7	7	18	16	16	32	181	290	471	160	4	695	224
University of California San Diego	0	1	3	3	22	41	63	109	341	450	54	2	574	124
San Diego Harbor Police	0	0	4	9	0	25	25	184	128	312	2	3	352	40
California State Parks and Recreation	0	0	1	9	1	38	39	32	38	70	6	3	125	55
TOTAL	130	856	3,375	9,646	10,706	8,187	18,893	18,179	36,102	54,281	23,460	583	110,641	56,360

NOTES: Crime reporting specific to 4S Ranch did not begin until July 2007. The FBI Crime Index includes homicide, rape, robbery, and aggravated assault in the violent category and burglary, larceny, and motor vehicle theft in the property category. The California Crime Index (CCI) includes all FBI Index crimes except larceny theft.

SOURCE: SANDAG

Appendix Table 11
NUMBER OF CRIMES BY OFFENSE BY JURISDICTION
San Diego Region, 2004

	Homicide	Rape	Robbery	Aggravated Assault	Residential Burglary	Non-Residential Burglary	Total Burglary	Larceny Over \$400	Larceny \$400 and Under	Total Larceny	Motor Vehicle Theft	Arson	FBI Crime Index	California Crime Index
Carlsbad	2	13	42	213	253	204	457	502	974	1,476	230	8	2,433	957
Chula Vista	15	50	296	477	687	497	1,184	1,252	2,735	3,987	2,043	31	8,052	4,065
Coronado	0	10	15	16	74	41	115	108	347	455	88	1	699	244
El Cajon	7	21	164	353	395	420	815	736	1,618	2,354	1,090	32	4,804	2,450
Escondido	3	22	198	453	412	373	785	1,026	2,268	3,294	1,576	35	6,331	3,037
La Mesa	0	10	72	118	183	210	393	399	886	1,285	534	5	2,412	1,127
National City	5	16	139	261	135	255	390	366	1,178	1,544	900	15	3,255	1,711
Oceanside	9	77	289	648	706	419	1,125	1,181	2,985	4,166	824	33	7,138	2,972
San Diego	62	373	1,650	4,689	4,495	2,810	7,305	9,399	15,769	25,168	12,970	191	52,217	27,049
Sheriff - Total	25	192	709	2,096	2,713	2,119	4,832	3,802	6,711	10,513	3,709	160	22,076	11,563
Del Mar	0	2	3	8	14	15	29	78	63	141	27	0	210	69
Encinitas	2	15	38	95	145	140	285	298	503	801	165	6	1,401	600
Imperial Beach	1	8	48	133	137	99	236	124	332	456	203	23	1,085	629
Lemon Grove	1	7	47	115	83	150	233	115	338	453	228	5	1,084	631
Poway	0	4	10	61	83	107	190	202	359	561	98	13	924	363
San Marcos	1	17	61	171	148	198	346	264	580	844	305	12	1,745	901
Santee	1	16	44	104	103	135	238	260	530	790	204	4	1,397	607
Solana Beach	0	0	17	19	25	47	72	111	98	209	53	1	370	161
Vista	3	28	162	272	473	268	741	567	1,069	1,636	519	16	3,361	1,725
Unincorporated	16	95	279	1,118	1,502	960	2,462	1,783	2,839	4,622	1,907	80	10,499	5,877
4S Ranch	--	--	--	--	--	--	--	--	--	--	--	--	--	--
Alpine	0	2	21	72	99	74	173	119	178	297	139	4	704	407
Fallbrook	1	13	22	77	248	124	372	229	426	655	154	7	1,294	639
Lakeside	3	14	28	105	173	146	319	238	433	671	277	0	1,417	746
Ramona	0	6	2	68	70	60	130	91	161	252	78	1	536	284
Spring Valley	9	12	110	255	242	165	407	273	483	756	497	0	2,046	1,290
Valley Center	1	8	26	53	76	70	146	99	113	212	102	11	548	336
California Highway Patrol	0	0	0	15	0	3	3	2	36	38	71	0	127	89
California State University San Marcos	0	2	0	1	3	4	7	4	38	42	0	0	52	10
San Diego State University	0	9	6	9	19	31	50	162	270	432	83	6	589	157
University of California San Diego	0	2	1	3	32	31	63	157	375	532	47	4	648	116
San Diego Harbor Police	0	0	7	10	0	12	12	167	150	317	1	1	347	30
California State Parks and Recreation	0	0	0	5	1	8	9	30	36	66	6	3	86	20
TOTAL	128	797	3,588	9,367	10,108	7,437	17,545	19,293	36,376	55,669	24,172	525	111,266	55,597

NOTES: Crime reporting specific to 4S Ranch did not begin until July 2007. The FBI Crime Index includes homicide, rape, robbery, and aggravated assault in the violent category and burglary, larceny, and motor vehicle theft in the property category. The California Crime Index (CCI) includes all FBI Index crimes except larceny theft.

SOURCE: SANDAG

Appendix Table 12
NUMBER OF CRIMES BY OFFENSE BY JURISDICTION
San Diego Region, 2005

				Aggravated	Residential	Non-Residential	Total	Larceny	Larceny	Total	Motor			FBI	California
	Homicide	Rape	Robbery	Assault	Burglary	Burglary	Burglary	Over \$400	\$400 and Under	Larceny	Vehicle Theft	Arson	Crime Index	Crime Index	
Carlsbad	2	11	79	164	285	232	517	540	1,108	1,648	246	11	2,667	1,019	
Chula Vista	5	66	338	518	626	609	1,235	1,277	2,481	3,758	2,496	23	8,416	4,658	
Coronado	0	6	6	10	69	20	89	127	222	349	89	5	549	200	
El Cajon	2	40	171	305	296	473	769	658	1,480	2,138	1,136	36	4,561	2,423	
Escondido	2	31	186	473	399	402	801	996	2,035	3,031	1,079	37	5,603	2,572	
La Mesa	2	10	107	82	190	138	328	453	892	1,345	556	6	2,430	1,085	
National City	4	16	182	254	122	254	376	369	1,040	1,409	941	15	3,182	1,773	
Oceanside	7	78	264	634	718	347	1,065	1,096	2,750	3,846	746	33	6,640	2,794	
San Diego	51	376	1,862	4,314	4,611	2,851	7,462	9,771	14,842	24,613	14,138	233	52,816	28,203	
Sheriff - Total	23	170	725	2,189	2,589	2,320	4,909	3,982	6,361	10,343	4,066	151	22,425	12,082	
Del Mar	0	0	1	9	24	26	50	87	92	179	37	0	276	97	
Encinitas	3	11	45	112	165	159	324	330	394	724	186	7	1,405	681	
Imperial Beach	0	3	41	88	99	89	188	111	224	335	267	4	922	587	
Lemon Grove	1	6	59	90	93	115	208	102	237	339	258	6	961	622	
Poway	1	11	20	63	70	102	172	201	350	551	92	7	910	359	
San Marcos	0	15	57	165	121	238	359	318	671	989	282	10	1,867	878	
Santee	1	16	30	116	143	138	281	301	499	800	235	9	1,479	679	
Solana Beach	0	1	12	11	48	39	87	81	98	179	46	1	336	157	
Vista	4	21	190	315	404	367	771	547	1,074	1,621	579	29	3,501	1,880	
Unincorporated	13	86	270	1,220	1,422	1,047	2,469	1,904	2,722	4,626	2,084	78	10,768	6,142	
4S Ranch	--	--	--	--	--	--	--	--	--	--	--	--	--	--	
Alpine	1	5	15	54	104	71	175	164	189	353	121	1	724	371	
Fallbrook	0	11	43	123	259	203	462	260	499	759	177	7	1,575	816	
Lakeside	0	13	34	169	169	138	307	289	426	715	309	0	1,547	832	
Ramona	1	7	12	76	58	61	119	116	145	261	84	1	560	299	
Spring Valley	7	14	77	227	245	135	380	275	466	741	572	0	2,018	1,277	
Valley Center	1	9	6	63	62	101	163	114	116	230	106	13	578	348	
California Highway Patrol	0	0	2	18	2	9	11	4	28	32	96	0	159	127	
California State University San Marcos	0	1	0	2	1	7	8	9	43	52	2	0	65	13	
San Diego State University	0	8	10	11	14	11	25	217	330	547	88	0	689	142	
University of California San Diego	0	1	4	7	25	30	55	157	462	619	68	1	754	135	
San Diego Harbor Police	0	0	7	10	0	9	9	204	177	381	1	2	408	27	
California State Parks and Recreation	0	0	0	5	1	8	9	32	58	90	7	2	111	21	
TOTAL	98	814	3,943	8,996	9,948	7,720	17,668	19,892	34,309	54,201	25,755	555	111,475	57,274	

NOTES: Crime reporting specific to 4S Ranch did not begin until July 2007. The FBI Crime Index includes homicide, rape, robbery, and aggravated assault in the violent category and burglary, larceny, and motor vehicle theft in the property category. The California Crime Index (CCI) includes all FBI Index crimes except larceny theft.

SOURCE: SANDAG

**Appendix Table 13
NUMBER OF CRIMES BY OFFENSE BY JURISDICTION
San Diego Region, 2006**

	Homicide	Rape	Robbery	Aggravated Assault	Residential Burglary	Non-Residential Burglary	Total Burglary	Larceny Over \$400	Larceny \$400 and Under	Total Larceny	Motor Vehicle Theft	Arson	FBI Crime Index	California Crime Index
Carlsbad	1	11	77	240	320	267	587	657	991	1,648	220	18	2,784	1,136
Chula Vista	7	70	351	519	687	497	1,184	1,321	2,496	3,817	2,033	41	7,981	4,164
Coronado	0	3	9	11	48	19	67	114	265	379	70	1	539	160
El Cajon	4	28	154	287	270	368	638	618	1,336	1,954	1,020	25	4,085	2,131
Escondido	3	33	235	442	407	351	758	885	1,802	2,687	962	17	5,120	2,433
La Mesa	3	8	111	113	222	225	447	480	979	1,459	591	16	2,732	1,273
National City	2	9	211	302	143	310	453	314	811	1,125	885	12	2,987	1,862
Oceanside	8	48	245	635	682	297	979	999	2,262	3,261	633	21	5,809	2,548
San Diego	68	348	2,164	3,811	4,491	3,255	7,746	9,824	14,301	24,125	13,338	185	51,600	27,475
Sheriff - Total	30	211	737	1,964	2,459	2,366	4,825	3,754	5,656	9,410	4,013	144	21,190	11,780
Del Mar	0	1	7	18	22	32	54	108	82	190	30	0	300	110
Encinitas	3	8	48	104	160	164	324	279	425	704	170	3	1,361	657
Imperial Beach	1	17	34	116	94	75	169	119	223	342	236	3	915	573
Lemon Grove	1	12	65	92	65	146	211	99	220	319	263	9	963	644
Poway	0	13	21	69	84	126	210	207	248	455	119	5	887	432
San Marcos	3	19	75	189	196	288	484	311	607	918	333	14	2,021	1,103
Santee	0	14	44	93	122	148	270	243	342	585	199	8	1,205	620
Solana Beach	1	0	12	13	31	46	77	68	92	160	40	1	303	143
Vista	1	34	152	259	383	346	729	541	981	1,522	587	19	3,284	1,762
Unincorporated	20	93	279	1,011	1,302	995	2,297	1,779	2,436	4,215	2,036	82	9,951	5,736
4S Ranch	--	--	--	--	--	--	--	--	--	--	--	--	--	--
Alpine	1	4	17	51	102	82	184	127	154	281	123	4	661	380
Fallbrook	2	11	46	84	179	163	342	329	461	790	153	7	1,428	638
Lakeside	2	16	32	150	151	120	271	233	318	551	268	0	1,290	739
Ramona	0	6	16	59	61	76	137	95	144	239	70	4	527	288
Spring Valley	2	14	84	184	256	177	433	268	460	728	638	0	2,083	1,355
Valley Center	4	7	15	57	55	77	132	100	152	252	68	3	535	283
California Highway Patrol	0	0	0	16	2	10	12	2	20	22	76	0	126	104
California State University San Marcos	0	1	0	1	0	6	6	6	33	39	1	0	48	9
San Diego State University	0	7	13	5	20	15	35	152	258	410	119	2	589	179
University of California San Diego	0	0	1	2	30	61	91	176	337	513	75	5	682	169
San Diego Harbor Police	0	0	5	11	1	23	24	334	219	553	2	0	595	42
California State Parks and Recreation	0	0	0	3	1	2	3	21	31	52	8	1	66	14
TOTAL	126	777	4,313	8,362	9,783	8,072	17,855	19,657	31,797	51,454	24,046	488	106,933	55,479

NOTES: Crime reporting specific to 4S Ranch did not begin until July 2007. The FBI Crime Index includes homicide, rape, robbery, and aggravated assault in the violent category and burglary, larceny, and motor vehicle theft in the property category. The California Crime Index (CCI) includes all FBI Index crimes except larceny theft.

SOURCE: SANDAG

Appendix Table 14
NUMBER OF CRIMES BY OFFENSE BY JURISDICTION
San Diego Region, 2007

	Homicide	Rape	Robbery	Aggravated Assault	Residential Burglary	Non-Residential Burglary	Total Burglary	Larceny Over \$400	Larceny \$400 and Under	Total Larceny	Motor Vehicle Theft	Arson	FBI Crime Index	California Crime Index
Carlsbad	2	13	88	215	298	230	528	722	962	1,684	236	10	2,766	1,082
Chula Vista	8	57	396	460	637	456	1,093	1,276	2,514	3,790	2,396	28	8,200	4,410
Coronado	1	6	10	9	46	17	63	105	273	378	95	4	562	184
El Cajon	4	21	184	285	270	314	584	746	1,381	2,127	1,241	15	4,446	2,319
Escondido	4	28	280	345	456	352	808	827	1,601	2,428	1,093	23	4,986	2,558
La Mesa	0	7	125	103	188	192	380	496	859	1,355	499	8	2,469	1,114
National City	6	19	180	219	133	246	379	267	575	842	948	8	2,593	1,751
Oceanside	3	51	257	599	598	241	839	993	2,109	3,102	647	31	5,498	2,396
San Diego	57	296	2,095	3,882	4,500	3,179	7,679	9,162	14,102	23,264	13,224	200	50,497	27,233
Sheriff - Total	20	192	758	2,307	2,266	1,914	4,180	3,477	4,742	8,219	3,793	122	19,469	11,250
Del Mar	0	2	5	11	18	28	46	71	63	134	37	1	235	101
Encinitas	0	9	42	108	151	155	306	302	400	702	136	7	1,303	601
Imperial Beach	0	17	46	94	87	74	161	93	174	267	268	10	853	586
Lemon Grove	1	10	46	102	68	73	141	88	145	233	217	4	750	517
Poway	0	7	19	76	70	113	183	218	257	475	93	3	853	378
San Marcos	2	12	101	172	199	215	414	344	593	937	318	8	1,956	1,019
Santee	0	12	23	112	100	106	206	271	391	662	272	5	1,287	625
Solana Beach	0	2	10	14	33	41	74	80	66	146	51	2	297	151
Vista	4	24	170	327	333	261	594	418	620	1,038	517	6	2,674	1,636
Unincorporated	13	97	296	1,291	1,207	848	2,055	1,592	2,033	3,625	1,884	76	9,261	5,636
4S Ranch	0	0	1	8	16	10	26	20	14	34	10	0	79	45
Alpine	0	5	16	73	92	57	149	149	157	306	137	5	686	380
Fallbrook	1	6	46	133	138	134	272	218	351	569	172	8	1,199	630
Lakeside	3	14	28	185	133	88	221	221	269	490	204	0	1,145	655
Ramona	3	7	22	80	65	68	133	78	80	158	52	2	455	297
Spring Valley	2	24	102	216	222	166	388	229	348	577	553	0	1,862	1,285
Valley Center	0	7	11	100	76	64	140	105	119	224	94	6	576	352
California Highway Patrol	0	0	0	8	1	6	7	2	27	29	89	0	133	104
California State University San Marcos	0	0	0	0	3	5	8	15	40	55	3	0	66	11
San Diego State University	0	9	7	14	28	47	75	121	279	400	113	0	618	218
University of California San Diego	0	1	2	2	28	28	56	135	238	373	42	4	476	103
San Diego Harbor Police	0	0	4	17	3	26	29	353	196	549	3	1	602	53
California State Parks and Recreation	0	2	1	2	0	2	2	53	31	84	13	4	104	20
TOTAL	105	702	4,387	8,467	9,455	7,255	16,710	18,750	29,929	48,679	24,435	458	103,485	54,806

NOTES: Crime reporting specific to 4S Ranch began in July 2007 (therefore, Sheriff Total and Unincorporated Total include six months of data for 4S Ranch for 2007). The FBI Crime Index includes homicide, rape, robbery, and aggravated assault in the violent category and burglary, larceny, and motor vehicle theft in the property category. The California Crime Index (CCI) includes all FBI Index crimes except larceny theft.

SOURCE: SANDAG

Appendix Table 15
VIOLENT CRIME CLEARANCE RATE BY JURISDICTION
San Diego Region, 2003, 2006, and 2007

	2003	2006	2007	Difference	
				2003-2007	2006-2007
Carlsbad	51%	42%	41%	-10%	-1%
Chula Vista	42%	37%	33%	-9%	-4%
Coronado	66%	52%	19%	-47%	-33%
El Cajon	46%	54%	45%	-1%	-9%
Escondido	51%	44%	49%	-2%	5%
La Mesa	62%	51%	65%	3%	14%
National City	34%	25%	21%	-13%	-4%
Oceanside	36%	39%	43%	7%	4%
San Diego	52%	46%	48%	-4%	2%
Sheriff - Total	43%	64%	47%	4%	-17%
Del Mar	--	--	--	--	--
Encinitas	29%	55%	41%	12%	-14%
Imperial Beach	48%	66%	51%	3%	-15%
Lemon Grove	39%	63%	49%	10%	-14%
Poway	47%	51%	44%	-3%	-7%
San Marcos	42%	58%	37%	-5%	-21%
Santee	43%	63%	56%	13%	-7%
Solana Beach	--	--	--	--	--
Vista	38%	67%	41%	3%	-26%
Unincorporated	46%	66%	51%	5%	-15%
4S Ranch	--	--	--	--	--
Alpine	45%	40%	48%	3%	8%
Fallbrook	41%	55%	41%	0%	-14%
Ramona	33%	83%	61%	28%	-22%
Valley Center	41%	65%	52%	11%	-13%
TOTAL	48%	48%	46%	-2%	-2%

NOTES: "Sheriff-Total" includes the contract cities and the unincorporated area served by the San Diego County Sheriff's Department. Camp Pendleton is not included. "Unincorporated" includes Alpine, Fallbrook, Ramona, and Valley Center, as well as the unincorporated areas for which crime data are not individually shown (Campo, Encinitas Uninc., Imperial Beach Uninc., Julian, Lakeside, Lemon Grove Uninc., Pine Valley, Poway Uninc., Ranchita, San Marcos Uninc., Santee Uninc., Spring Valley, and Vista Uninc.). Clearance rates based upon reported incidents or cases cleared numbering 30 or fewer are not computed for this table.

SOURCE: SANDAG

Appendix Table 16
PROPERTY CRIME CLEARANCE RATE BY JURISDICTION
San Diego Region, 2003, 2006, and 2007

	2003	2006	2007	Difference	
				2003-2007	2006-2007
Carlsbad	17%	16%	10%	-7%	-6%
Chula Vista	13%	14%	15%	2%	1%
Coronado	13%	12%	12%	-1%	0%
El Cajon	14%	17%	16%	2%	-1%
Escondido	14%	16%	15%	1%	-1%
La Mesa	15%	14%	17%	2%	3%
National City	12%	12%	10%	-2%	-2%
Oceanside	10%	11%	11%	1%	0%
San Diego	9%	10%	10%	1%	0%
Sheriff - Total	9%	13%	12%	3%	-1%
Del Mar	--	--	--	--	--
Encinitas	9%	13%	12%	3%	-1%
Imperial Beach	6%	9%	10%	4%	1%
Lemon Grove	11%	19%	18%	7%	-1%
Poway	12%	16%	14%	2%	-2%
San Marcos	9%	18%	16%	7%	-2%
Santee	13%	17%	14%	1%	-3%
Solana Beach	--	--	--	--	--
Vista	10%	12%	12%	2%	0%
Unincorporated	9%	11%	11%	2%	0%
4S Ranch	--	--	--	--	--
Alpine	9%	11%	9%	0%	-2%
Fallbrook	6%	8%	9%	3%	1%
Ramona	17%	22%	17%	0%	-5%
Valley Center	5%	15%	13%	8%	-2%
TOTAL	11%	12%	11%	0%	-1%

NOTES: "Sheriff-Total" includes the contract cities and the unincorporated area served by the San Diego County Sheriff's Department. Camp Pendleton is not included. "Unincorporated" includes Alpine, Fallbrook, Ramona, and Valley Center, as well as the unincorporated areas for which crime data are not individually shown (Campo, Encinitas Uninc., Imperial Beach Uninc., Julian, Lakeside, Lemon Grove Uninc., Pine Valley, Poway Uninc., Ranchita, San Marcos Uninc., Santee Uninc., Spring Valley, and Vista Uninc.). Clearance rates based upon reported incidents or cases cleared numbering 30 or fewer are not computed for this table.

SOURCE: SANDAG

Appendix Table 17
DOLLAR VALUE OF PROPERTY STOLEN BY JURISDICTION
San Diego Region, 2003, 2006, and 2007

	2003	2006	2007	Change	
				2003-2007	2006-2007
Carlsbad	\$4,747,521	\$5,975,189	\$9,329,553	97%	56%
Chula Vista	21,077,209	26,749,110	26,510,763	26%	-1%
Coronado	1,098,738	1,569,441	1,290,186	17%	-18%
El Cajon	10,990,497	11,055,443	12,981,609	18%	17%
Escondido	10,367,309	10,024,850	8,870,575	-14%	-12%
La Mesa	4,726,482	5,741,366	5,609,481	19%	-2%
National City	7,781,552	8,102,703	7,379,198	-5%	-9%
Oceanside	10,165,738	8,128,425	9,031,000	-11%	11%
San Diego	117,944,595	149,020,961	132,900,129	13%	-11%
Sheriff - Total	43,979,335	62,101,402	48,990,341	11%	-21%
Del Mar	1,139,179	1,068,863	926,695	-19%	-13%
Encinitas	3,443,463	2,876,991	2,949,443	-14%	3%
Imperial Beach	1,521,599	2,036,472	2,495,396	64%	23%
Lemon Grove	2,735,580	2,038,988	1,975,663	-28%	-3%
Poway	1,648,910	2,406,108	2,358,304	43%	-2%
San Marcos	3,069,057	3,602,935	3,849,259	25%	7%
Santee	2,181,878	2,966,456	2,879,318	32%	-3%
Solana Beach	938,387	817,414	1,026,521	9%	26%
Vista	4,679,623	7,425,969	5,017,407	7%	-32%
Unincorporated	22,621,659	36,861,206	25,512,335	13%	-31%
4S Ranch	--	--	113,801	--	--
Alpine	1,420,591	1,950,597	1,627,260	15%	-17%
Fallbrook	2,079,891	3,064,576	2,325,075	12%	-24%
Ramona	966,123	1,103,441	1,124,762	16%	2%
Valley Center	1,571,791	11,264,956	1,656,217	5%	-85%
California Highway Patrol	549,146	384,985	376,019	-32%	-2%
California State University San Marcos	20,205	36,614	42,517	110%	16%
San Diego State University	1,227,416	1,522,051	1,157,684	-6%	-24%
University of California San Diego	563,345	1,315,760	616,482	9%	-53%
San Diego Harbor Police	820,205	1,146,358	1,163,004	42%	1%
California State Parks and Recreation	195,636	161,619	173,824	-11%	8%
TOTAL	\$236,254,929	\$293,036,277	\$266,422,365	13%	-9%

NOTES: Dollar amounts are not adjusted for inflation and reflect the reported dollar values associated with stolen items reported by individual jurisdictions. "Sheriff-Total" includes the contract cities and the unincorporated area served by the San Diego County Sheriff's Department. Camp Pendleton is not included. "Unincorporated" includes 4S Ranch (July through December 2007), Alpine, Fallbrook, Ramona, and Valley Center, as well as the unincorporated areas for which crime data are not individually shown (Campo, Encinitas Uninc., Imperial Beach Uninc., Julian, Lakeside, Lemon Grove Uninc., Pine Valley, Poway Uninc., Ranchita, San Marcos Uninc., Santee Uninc., Spring Valley, and Vista Uninc.).

SOURCE: SANDAG

Appendix Table 18
DOLLAR VALUE OF PROPERTY RECOVERED BY JURISDICTION
San Diego Region, 2003, 2006, and 2007

	2003	2006	2007	Change	
				2003-2007	2006-2007
Carlsbad	\$1,874,566	\$1,873,912	\$1,847,860	-1%	-1%
Chula Vista	10,934,848	12,194,691	12,967,166	19%	6%
Coronado	266,006	473,332	396,581	49%	-16%
El Cajon	5,693,758	4,837,724	5,878,084	3%	22%
Escondido	5,911,480	5,393,843	3,819,858	-35%	-29%
La Mesa	2,736,655	3,119,583	2,914,458	6%	-7%
National City	4,739,855	4,013,175	3,610,678	-24%	-10%
Oceanside	4,147,335	3,722,034	4,002,520	-3%	8%
San Diego	55,751,532	67,854,368	52,937,962	-5%	-22%
Sheriff - Total	14,499,583	19,551,821	18,551,159	28%	-5%
Del Mar	454,485	314,508	386,687	-15%	23%
Encinitas	1,328,312	854,446	1,287,112	-3%	51%
Imperial Beach	447,717	1,038,369	1,093,726	144%	5%
Lemon Grove	944,248	1,143,434	1,050,067	11%	-8%
Poway	541,762	869,393	676,197	25%	-22%
San Marcos	1,001,022	1,430,319	1,433,312	43%	<1%
Santee	810,322	950,177	1,058,980	31%	11%
Solana Beach	285,237	284,265	353,340	24%	24%
Vista	1,786,770	2,760,868	1,920,983	8%	-30%
Unincorporated	6,899,708	9,906,042	9,290,755	35%	-6%
4S Ranch	--	--	50,728	--	--
Alpine	476,580	642,615	550,459	16%	-14%
Fallbrook	467,803	865,933	837,986	79%	-3%
Ramona	225,376	459,632	343,046	52%	-25%
Valley Center	411,484	517,988	681,336	66%	32%
California Highway Patrol	104,620	78,700	167,900	60%	113%
California State University San Marcos	310	20,901	1,002	223%	-95%
San Diego State University	652,813	215,013	570,510	-13%	165%
University of California San Diego	184,455	363,537	132,411	-28%	-64%
San Diego Harbor Police	79,346	116,127	66,228	-17%	-43%
California State Parks and Recreation	26,609	19,330	14,150	-47%	-27%
TOTAL	\$107,603,771	\$123,848,091	\$107,878,527	<1%	-13%

NOTES: Dollar amounts are not adjusted for inflation and reflect the reported dollar values associated with recovered items reported by individual jurisdictions. "Sheriff-Total" includes the contract cities and the unincorporated area served by the San Diego County Sheriff's Department. Camp Pendleton is not included. "Unincorporated" includes 4S Ranch (July through December 2007), Alpine, Fallbrook, Ramona, and Valley Center, as well as the unincorporated areas for which crime data are not individually shown (Campo, Encinitas Uninc., Imperial Beach Uninc., Julian, Lakeside, Lemon Grove Uninc., Pine Valley, Poway Uninc., Ranchita, San Marcos Uninc., Santee Uninc., Spring Valley, and Vista Uninc.).

SOURCE: SANDAG

Appendix Table 19
PROPERTY RECOVERY RATE BY JURISDICTION
San Diego Region, 2003, 2006, and 2007

	2003	2006	2007	Difference	
				2003-2007	2006-2007
Carlsbad	39%	31%	20%	-19%	-11%
Chula Vista	52%	46%	49%	-3%	3%
Coronado	24%	30%	31%	7%	1%
El Cajon	52%	44%	45%	-7%	1%
Escondido	57%	54%	43%	-14%	-11%
La Mesa	58%	54%	52%	-6%	-2%
National City	61%	50%	49%	-12%	-1%
Oceanside	41%	46%	44%	3%	-2%
San Diego	47%	46%	40%	-7%	-6%
Sheriff - Total	33%	31%	38%	5%	7%
Del Mar	40%	29%	42%	2%	13%
Encinitas	39%	30%	44%	5%	14%
Imperial Beach	29%	51%	44%	15%	-7%
Lemon Grove	35%	56%	53%	18%	-3%
Poway	33%	36%	29%	-4%	-7%
San Marcos	33%	40%	37%	4%	-3%
Santee	37%	32%	37%	0%	5%
Solana Beach	30%	35%	34%	4%	-1%
Vista	38%	37%	38%	0%	1%
Unincorporated	31%	27%	36%	5%	9%
4S Ranch	--	--	45%	--	--
Alpine	34%	33%	34%	0%	1%
Fallbrook	22%	28%	36%	14%	8%
Ramona	23%	42%	30%	7%	-12%
Valley Center	26%	5%	41%	15%	36%
California Highway Patrol	19%	20%	45%	26%	25%
California State University San Marcos	2%	57%	2%	0%	-55%
San Diego State University	53%	14%	49%	-4%	35%
University of California San Diego	33%	28%	21%	-12%	-7%
San Diego Harbor Police	10%	10%	6%	-4%	-4%
California State Parks and Recreation	14%	12%	8%	-6%	-4%
TOTAL	46%	42%	40%	-6%	-2%

NOTES: "Sheriff-Total" includes the contract cities and the unincorporated area served by the San Diego County Sheriff's Department. Camp Pendleton is not included. "Unincorporated" includes 4S Ranch (July through December 2007), Alpine, Fallbrook, Ramona, and Valley Center, as well as the unincorporated areas for which crime data are not individually shown (Campo, Encinitas Uninc., Imperial Beach Uninc., Julian, Lakeside, Lemon Grove Uninc., Pine Valley, Poway Uninc., Ranchita, San Marcos Uninc., Santee Uninc., Spring Valley, and Vista Uninc.).

SOURCE: SANDAG

Appendix Table 20
POPULATION BY JURISDICTION
San Diego Region, 2003, 2006, and 2007

	2003	2006	2007	Change	
				2003-2007	2006-2007
Carlsbad	90,643	98,641	101,337	12%	3%
Chula Vista	200,378	223,533	227,723	14%	2%
Coronado	26,418	22,898	22,957	-13%	<1%
El Cajon	97,001	96,900	97,255	<1%	<1%
Escondido	138,608	140,816	141,788	2%	1%
La Mesa	55,884	55,779	56,250	1%	1%
National City	59,960	61,123	61,115	2%	<-1%
Oceanside	170,419	174,986	176,644	4%	1%
San Diego	1,279,534	1,305,625	1,316,837	3%	1%
Sheriff - Total	818,037	843,282	856,877	5%	2%
Del Mar	4,520	4,525	4,548	1%	1%
Encinitas	61,308	62,836	63,259	3%	1%
Imperial Beach	27,711	27,572	27,709	<-1%	<1%
Lemon Grove	25,463	25,371	25,451	<-1%	<1%
Poway	50,011	50,567	50,830	2%	1%
San Marcos	63,755	76,752	79,812	25%	4%
Santee	53,769	54,727	55,158	3%	1%
Solana Beach	13,377	13,331	13,418	<1%	1%
Vista	93,093	94,473	94,962	2%	1%
Unincorporated	425,030	433,128	441,730	4%	2%
4S Ranch	--	6,755	14,205	--	110%
Alpine	27,767	28,087	28,961	4%	3%
Fallbrook	48,706	50,028	50,500	4%	1%
Lakeside	53,093	53,060	53,287	<1%	<1%
Ramona	34,631	35,746	36,503	5%	2%
Spring Valley	70,082	70,653	71,241	2%	1%
Valley Center	22,060	21,487	22,482	2%	5%
Camp Pendleton	34,923	40,530	39,486	13%	-3%
TOTAL	2,971,805	3,064,113	3,098,269	4%	1%
Occupied Households	1,042,862	1,068,824	1,081,234	4%	1%
Registered Vehicles	2,191,884	2,320,808	2,353,063	6%	1%
Female Population	1,458,521	1,531,071	1,548,705	6%	1%

NOTES: Population figures are based upon current California Department of Finance estimates. "Sheriff-Total" includes contract cities and the unincorporated area served by the San Diego County Sheriff's Department. Camp Pendleton is not included. "Unincorporated" includes 4S Ranch (July through December 2007), Alpine, Fallbrook, Lakeside, Ramona, Spring Valley, and Valley Center, as well as the unincorporated areas not shown (Campo, Encinitas Uninc., Imperial Beach Uninc., Julian, Lemon Grove Uninc., Pine Valley, Poway Uninc., Ranchita, San Marcos Uninc., Santee Uninc., and Vista Uninc.).

SOURCES: California Department of Finance; SANDAG