



Arrests 2006: Law Enforcement Response to Crime in the San Diego Region

October 2007

Cynthia Burke, Ph.D.
Division Director



401 B Street
Suite 800
San Diego, CA 92101
(619) 699-1900

BOARD OF DIRECTORS



The 18 cities and county government are SANDAG serving as the forum for regional decision-making. SANDAG builds consensus; plans, engineers, and builds public transit; makes strategic plans; obtains and allocates resources; and provides information on a broad range of topics pertinent to the region's quality of life.

CHAIR

Hon. Mary Teresa Sessom

FIRST VICE CHAIR

Hon. Lori Holt Pfeiler

SECOND VICE CHAIR

Hon. Jerome Stocks

EXECUTIVE DIRECTOR

Gary L. Gallegos

CITY OF CARLSBAD

Hon. Matt Hall, Councilmember
(A) Hon. Bud Lewis, Mayor
(A) Hon. Ann Kulchin, Mayor Pro Tem

CITY OF CHULA VISTA

Hon. Cheryl Cox, Mayor
(A) Hon. Jerry Rindone, Deputy Mayor
(A) Hon. John McCann, Councilmember

CITY OF CORONADO

Hon. Phil Monroe, Councilmember
(A) Hon. Carrie Downey, Mayor Pro Tem
(A) Hon. Al Ovrom, Councilmember

CITY OF DEL MAR

Hon. Crystal Crawford, Councilmember
(A) Hon. David Druker, Deputy Mayor
(A) Hon. Henry Abarbanel, Councilmember

CITY OF EL CAJON

Hon. Mark Lewis, Mayor
(A) Hon. Jillian Hanson-Cox, Councilmember

CITY OF ENCINITAS

Hon. Jerome Stocks, Deputy Mayor
(A) Hon. Teresa Barth, Councilmember

CITY OF ESCONDIDO

Hon. Lori Holt Pfeiler, Mayor
(A) Hon. Ed Gallo, Councilmember
(A) Hon. Sam Abed, Mayor Pro Tem

CITY OF IMPERIAL BEACH

Hon. Jim Janney, Mayor
(A) Hon. Patricia McCoy, Councilmember
(A) Hon. Mayda Winter, Mayor Pro Tem

CITY OF LA MESA

Hon. Art Madrid, Mayor
(A) Hon. David Allan, Councilmember
(A) Hon. Mark Arapostathis, Councilmember

CITY OF LEMON GROVE

Hon. Mary Teresa Sessom, Mayor
(A) Hon. Jerry Jones, Councilmember
(A) Hon. Jerry Selby, Councilmember

CITY OF NATIONAL CITY

Hon. Ron Morrison, Mayor
(A) Hon. Frank Parra, Councilmember
(A) Hon. Louie Natividad, Councilmember

CITY OF OCEANSIDE

Hon. Jim Wood, Mayor
(A) Hon. Jerry Kern, Councilmember
(A) Hon. Jack Feller, Councilmember

CITY OF POWAY

Hon. Mickey Cafagna, Mayor
(A) Hon. Robert Emery, Councilmember
(A) Hon. Don Higginson, Councilmember

CITY OF SAN DIEGO

Hon. Jerry Sanders, Mayor
(A) Hon. Toni Atkins, Councilmember
(A) Hon. Jim Madaffer, Councilmember
(A) Hon. Scott Peters, Council President

CITY OF SAN MARCOS

Hon. Jim Desmond, Mayor
(A) Hon. Hal Martin, Vice Mayor
(A) Hon. Rebecca Jones, Councilmember

CITY OF SANTEE

Hon. Jack Dale, Councilmember
(A) Hon. Hal Ryan, Councilmember
(A) Hon. John Minto, Councilmember

CITY OF SOLANA BEACH

Hon. Lesa Heebner, Mayor
(A) Hon. Dave Roberts, Councilmember
(A) Hon. Mike Nichols, Councilmember

CITY OF VISTA

Hon. Judy Ritter, Mayor Pro Tem
(A) Hon. Bob Campbell, Councilmember
(A) Hon. Steve Gronke, Councilmember

COUNTY OF SAN DIEGO

Hon. Ron Roberts, Chairman
(A) Hon. Bill Horn, Supervisor
(A) Hon. Greg Cox, Vice Chairman
(A) Hon. Dianne Jacob, Chair Pro Tem

IMPERIAL COUNTY

(Advisory Member)
Hon. Victor Carrillo, Chairman
(A) Hon. David Ouzan, Councilmember

CALIFORNIA DEPARTMENT OF TRANSPORTATION

(Advisory Member)
Will Kempton, Director
(A) Pedro Orso-Delgado, District 11 Director

METROPOLITAN TRANSIT SYSTEM

(Advisory Member)
Harry Mathis, Chairman
(A) Hon. Jerry Rindone, Vice Chairman
(A) Hon. Bob Emery, Board Member

NORTH COUNTY TRANSIT DISTRICT

(Advisory Member)
Hon. Ed Gallo, Chairman
(A) Hon. Jerome Stocks, Planning Committee Chair
(A) Hon. David Druker, Monitoring Committee Chair

U.S. DEPARTMENT OF DEFENSE

(Advisory Member)
CAPT Steve Wirsching, USN, CEC,
Southwest Division Naval Facilities Engineering Command
(A) CAPT Robert Farley, USN, CEC
Southwest Division Naval Facilities Engineering Command

SAN DIEGO UNIFIED PORT DISTRICT

(Advisory Member)
Sylvia Rios, Chair
(A) Michael Bixler, Commissioner

SAN DIEGO COUNTY WATER AUTHORITY

(Advisory Member)
Marilyn Dailey, Commissioner
(A) Mark Muir, Commissioner
(A) Gary Croucher, Commissioner

SOUTHERN CALIFORNIA TRIBAL CHAIRMEN'S ASSOCIATION

(Advisory Member)
Chairman Robert Smith (Pala), SCTCA Chair
(A) Chairman Allen Lawson (San Pasqual)

MEXICO

(Advisory Member)
Hon. Luis Cabrera C.
Consulate General of Mexico

As of July 20, 2007

ARRESTS 2006: LAW ENFORCEMENT RESPONSE TO CRIME IN THE SAN DIEGO REGION

INTRODUCTION

The Criminal Justice Research Division of the San Diego Association of Governments (SANDAG) functions as the Clearinghouse for criminal justice information for the region. On an annual basis, the Division prepares a report on local criminal justice agencies' response to crime in the region, as measured by arrest statistics. Such information provides an added dimension to our bi-annual reports on crime data for understanding the nature of crime and an additional measure that can be used in justice system planning. Specifically, this information can be used to track how effective different interventions or programs may be since crime statistics do not reflect who committed a crime or offense (i.e., adult or juvenile).

This CJ Bulletin includes regional arrest rates per 1,000 adult and juvenile population, as well as numbers of arrests by offense type. In addition, 42 supplemental tables, which include statistics for individual jurisdictions, also are presented.

Some points to remember when interpreting these numbers include the following:

- Similar to how the FBI counts reported crimes, the offense or charge attributed to an arrest may reflect only the most serious out of a number of violations included in the case.
- Arrests are documented by the location at which the arrest occurred and cannot be assumed to have any relationship to the location of the crime incident or the residence of the alleged offender.
- Arrest and crime rates and numbers should not be compared to one another.

One reason is that the two events may occur in two entirely different periods of time, with an arrest made months or even years after the related crime has been reported.

FAST FACTS

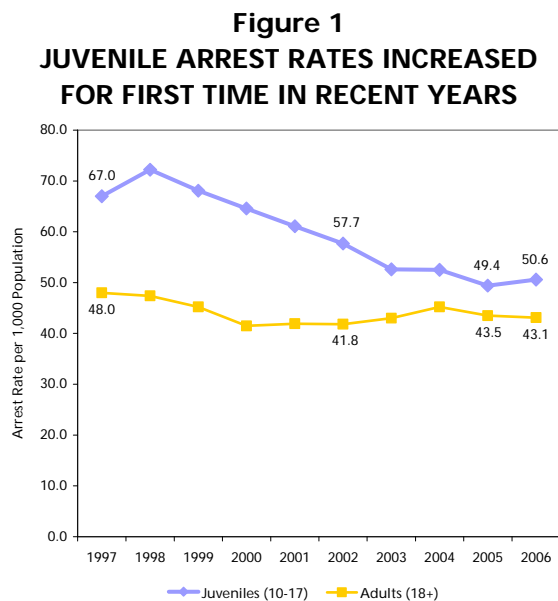
- On average, 271 adults and 48 juveniles were arrested each day in 2006 in the San Diego region.
- The 2006 adult arrest rate of 43.1 per 1,000 population represented a one percent decrease from 2005.
- The 2006 juvenile arrest rate of 50.6 was two percent higher than 2005, the first increase since the late 1990s.
- While the adult felony arrest rate decreased 6 percent from 2005 to 2006, the juvenile felony arrest rate increased 13 percent.
- San Diego County had the second highest adult and juvenile arrest rates compared to the other four most populated California counties in 2006.
- More than half (52%) of all adult arrests in 2006 were for an alcohol- or other drug-related offense.
- The most common arrest type in 2006 was misdemeanor driving under the influence (DUI), with 17,508 adults arrested over the 12-month period.
- Juveniles represented almost one in three (31%) weapons-related arrests, but only five percent of alcohol- and other drug-related arrests in 2006.

ARREST RATES

Trends

In 2006, there were 43.1 adults arrested per 1,000 population. As Figure 1 shows, the adult arrest rate reached a ten-year low in 2000 (41.5) and has varied between 41.8 and 45.2 since then, decreasing one percent from 2005 to 2006. Across the jurisdictions, the adult arrest rate varied from 14.6 to 59.3 in 2006, with nine jurisdictions reporting a higher rate and ten a lower rate, compared to 2005 (Table 7).

The arrest rate for juveniles, which has traditionally been higher than for adults, has shown a somewhat different pattern over time (Figure 1). Rather than increasing since 2000, the juvenile rate decreased consistently through 2005, with a slight increase (2%) to 50.6 in 2006, the first increase since 1997 to 1998. Across the jurisdictions, the juvenile arrest rate varied from 24.3 to 74.3 in 2006 (Table 10).



SOURCES: California Department of Justice; SANDAG

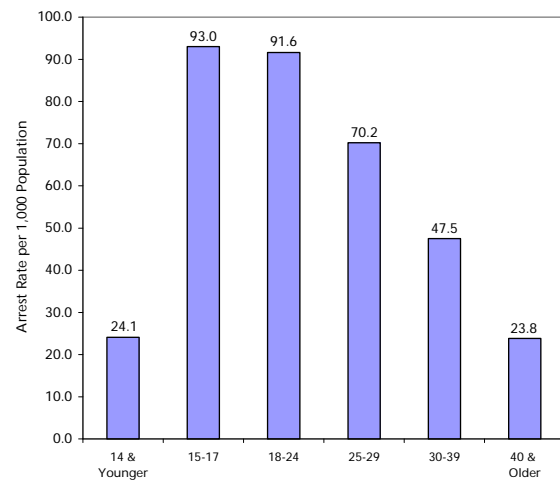
Felonies and Misdemeanors

While the overall adult arrest rate was down one percent from 2005 and the felony rate decreased six percent (Table 8), the misdemeanor rate actually increased two percent (Table 9) over the one-year period. For juveniles, this pattern was reversed, with the felony rate increasing (13%) (Table 11) and the misdemeanor rate decreasing four percent (Table 12).

Arrestee Age and Race

The arrest rate for adults decreased with the age of the arrestee as shown in Figure 2 and Table 2. Specifically, adults between the ages of 18 and 24 had the highest arrest rate (91.6) in 2006, while those 40 and older had the lowest (23.8). Juveniles between 15 and 17 had a slightly higher arrest rate than those adults 24 years of age and younger (93.0 versus 91.6).

Figure 2
ARREST RATES VARY BY AGE



SOURCES: California Department of Justice; SANDAG

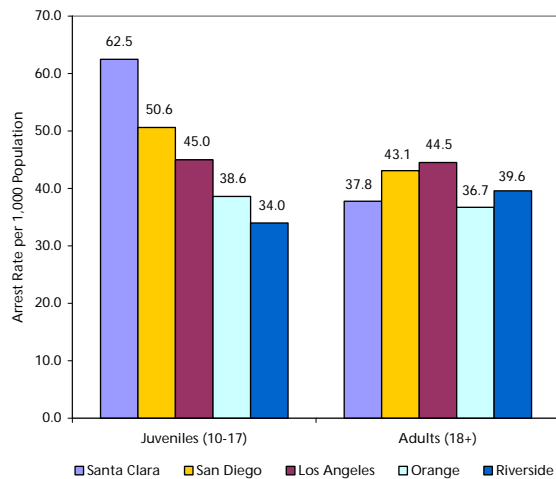
Table 3 presents arrest rates by ethnicity. Arrest rates also varied by ethnic group for both adults and juveniles, with individuals of other ethnicities having the lowest rate (18.5 and 23.4), while Blacks had the highest rate

(131.9 and 115.9). Of particular note, the juvenile arrest rate was higher than the adult rate for each ethnic group in 2006, except Blacks, where adults had a higher arrest rate than juveniles.

SAN DIEGO COMPARED TO OTHER CALIFORNIA COUNTIES

In 2006, San Diego County had an adult arrest rate that was lower than the State's (43.1 for San Diego versus 47.7), but a juvenile rate that was slightly higher (50.6 versus 50.0 for the State) (Table 6). Figure 3 compares the adult and juvenile arrest rates from San Diego with the other four most populated counties in the State (Santa Clara, Los Angeles, Orange, and Riverside). As this figure shows, San Diego County had the second highest juvenile and adult arrest rates. For juveniles, only Santa Clara had a higher arrest rate and for adults, the San Diego rate was only exceeded by Los Angeles.

**Figure 3
SAN DIEGO COUNTY HAD SECOND HIGHEST ADULT AND JUVENILE ARREST RATES IN 2006**

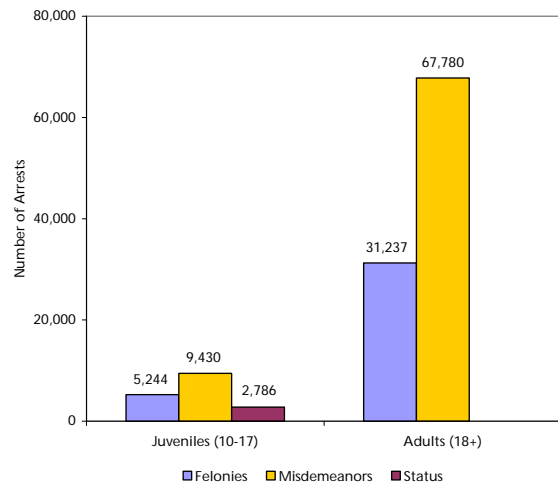


SOURCES: California Department of Justice; SANDAG

NUMBER OF ADULT AND JUVENILE ARRESTS

Even though juveniles have historically had a higher arrest rate compared to adults, it is important to note that many more adults are actually arrested. In 2006, there were a total of 99,017 adult arrests and 17,460 juvenile arrests, with the majority of these at the misdemeanor level (Figure 4). In other words, on average, there were about 271 adults and 48 juveniles arrested by local law enforcement agencies every day in 2006 in the San Diego region (not shown).

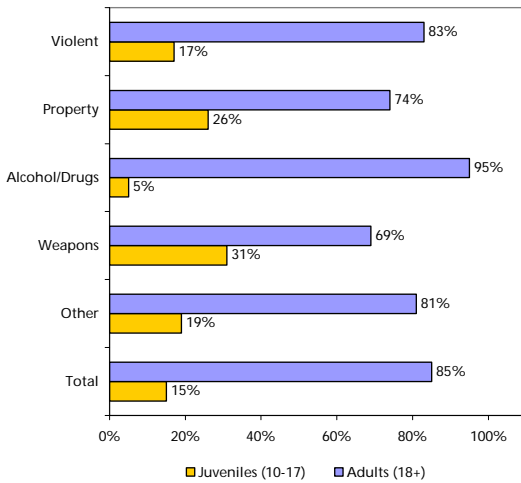
**Figure 4
MOST ARRESTS IN 2006 WERE ADULTS FOR MISDEMEANOR OFFENSES**



SOURCES: California Department of Justice; SANDAG

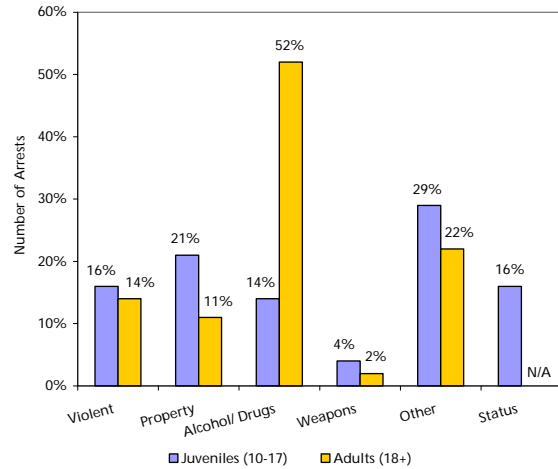
As Figure 5 shows, while 15 percent of all individuals arrested in 2006 were juveniles, there was variation by crime type, with juveniles more likely to be arrested for weapons offenses (31%) and property offenses (26%), and less likely to be arrested for alcohol- and other drug-related offenses (5%).

Figure 5
JUVENILES REPRESENT HIGHER
PROPORTION OF ARRESTS FOR
WEAPONS OFFENSES



SOURCES: California Department of Justice; SANDAG

Figure 6
ADULTS MORE LIKELY TO BE
ARRESTED FOR ALCOHOL- AND
OTHER DRUG-RELATED OFFENSES



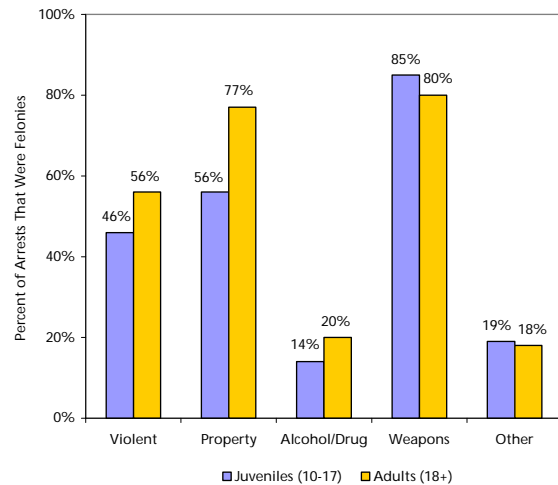
SOURCES: California Department of Justice; SANDAG

ARRESTS BY OFFENSE TYPE

What types of crimes are adults and juveniles arrested for? As Figure 6 shows, around half (52%) of adult arrests were for alcohol- or other drug-related violations. In comparison, the distribution across crime type varied less for juveniles, with the most common being “other” offenses (29%) and property offenses (21%).

There also was variation across the offense categories in terms of what percent represented felony- versus misdemeanor-level arrests. As Figure 7 shows, while more than three-quarters of juvenile and adult arrests for weapons offenses were at the felony level (85% and 80%, respectively), a much smaller percent were felonies in the alcohol/drug (14% and 20%) and other offense categories (19% and 18%). In addition, adults were more likely than juveniles to be arrested for a felony for both the violent (56% versus 46%) and property (77% versus 56%) offense categories.

Figure 7
MOST ARRESTS FOR WEAPONS
OFFENSES AT THE FELONY LEVEL IN 2006

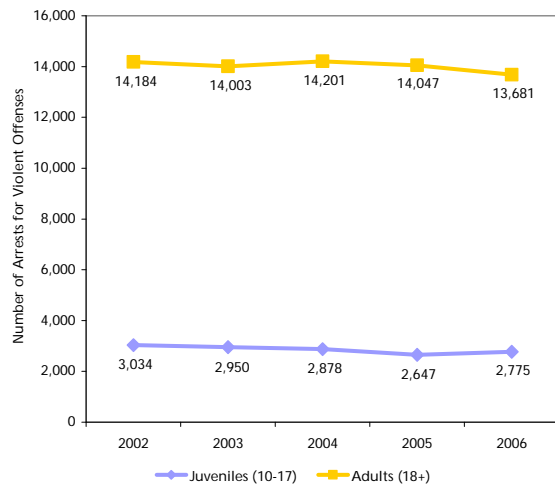


SOURCES: California Department of Justice; SANDAG

Violent Offenses

The violent offense arrest category includes four felony-level offenses (homicide, rape, robbery, and aggravated assault) and two misdemeanor-level offenses (manslaughter and assault/battery). There were 13,681 adult and 2,775 juvenile arrests for violent offenses in 2006 (Figure 8). For adults, there were fewer violent arrests in 2006 than any of the previous four years. In comparison, while there were fewer juvenile violent arrests in 2006 than 2002 (-9%), there was a one-year increase of five percent (Table 34).

Figure 8
NUMBER OF ARRESTS FOR VIOLENT OFFENSES DECREASED OVER PAST FIVE YEARS



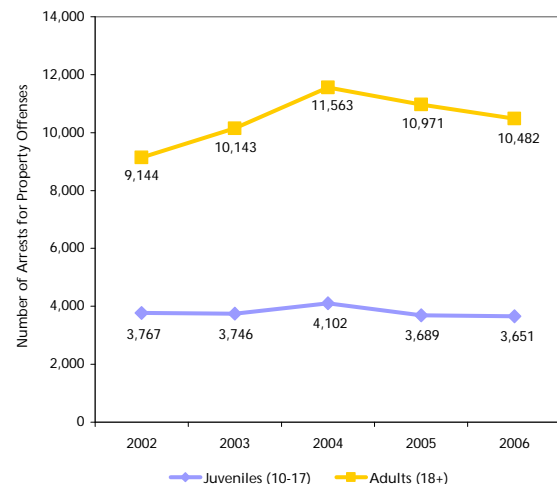
SOURCES: California Department of Justice; SANDAG

Across the violent arrest categories, there were more arrests in 2006 compared to 2005 (combining adults and juveniles) for homicide, rape, and robbery, but fewer arrests for assault (felony and misdemeanor), which represented the largest proportion of violent arrests (Tables 22 and 35).

Property Offenses

Property offenses include burglary, larceny, and motor vehicle theft at the felony level, and petty theft and burglary at the misdemeanor level. In 2006, there were 10,482 adults arrested for a property offense, which represented a four percent decrease from 2005, but a 15 percent increase from 2002 (Figure 9 and Table 21). The number of juvenile arrests for a property offense in 2006 also decreased over the year, but to a lesser extent (1%) (Table 34), and there also were fewer arrests compared to 2002.

Figure 9
ARRESTS FOR PROPERTY OFFENSES DOWN FOR BOTH ADULTS AND JUVENILES OVER PAST YEAR

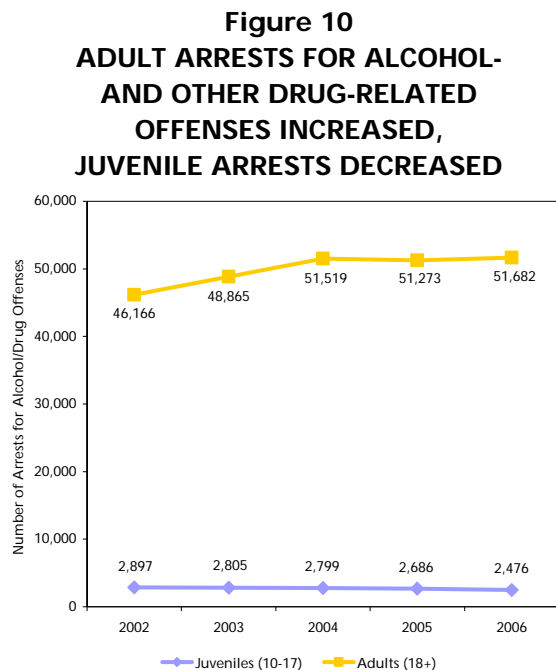


SOURCES: California Department of Justice; SANDAG

Across the property arrest categories (combining adults and juveniles), there were fewer arrests in 2006 for motor vehicle theft and misdemeanor-level crimes compared to 2005, but more for felony-level burglary and larceny (Tables 23 and 36).

Alcohol- and Other Drug-Related Offenses

In 2006, there were 51,682 adult and 2,476 juvenile arrests for alcohol- and other drug-related offenses (Figure 10). This number equates to more than six arrests every hour of every day (not shown). For adults, there was a 12 percent increase in arrests over the five-year period (Table 21). In contrast, for juveniles, the number of arrests declined over the same time period, with a 15 percent decrease between 2002 and 2006 (Table 34).



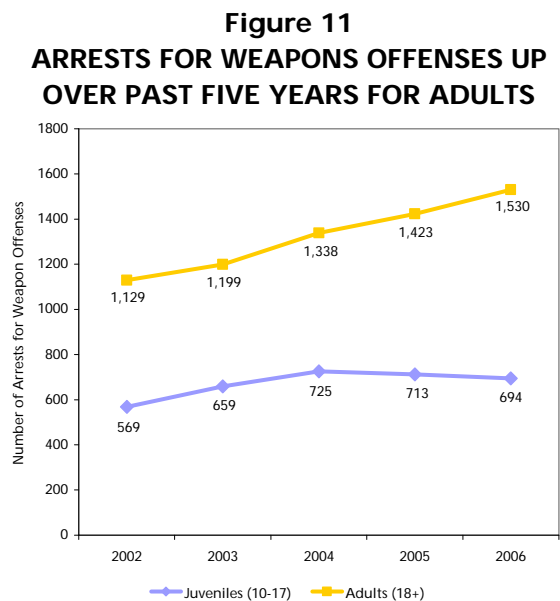
SOURCES: California Department of Justice; SANDAG

Felony alcohol/drug related arrests include violations in five different categories. Over the past year (combining adults and juveniles), all but one of these categories decreased in number overall, with the exception of arrests for narcotics, which includes heroin, morphine, cocaine/rock, and barbiturates. In contrast, most misdemeanor alcohol/drug arrests were up in number, with the exception of arrests for marijuana and

other drug offenses, which were both down (Tables 24 and 37).

Weapons Violations

There were 1,530 adult arrests and 694 juvenile arrests for weapons violations in 2006 (Figure 11). Over the past five years, adult and juvenile arrests for weapon offenses have increased fairly consistently and more than any other category of offense (by 36% and 22%, respectively), even though there were slight decreases for juveniles in the past two years (Tables 21 and 34).



SOURCES: California Department of Justice; SANDAG

Over the past year, the number of misdemeanor weapons arrests increased (for adults and juveniles combined) to a greater degree, compared to felony-level arrests (Tables 25 and 38).

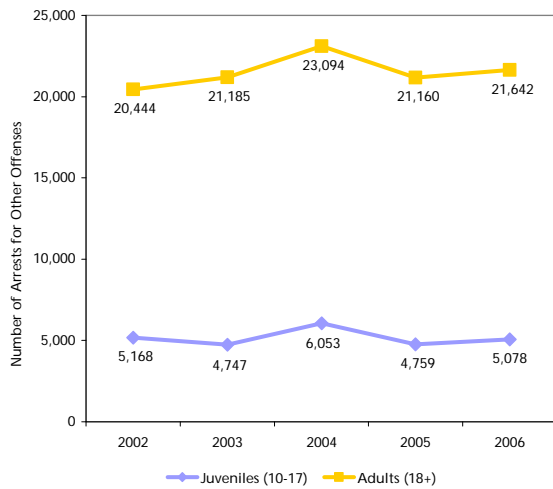
Other Offenses

“Other” offenses represented 22 percent of adult arrests and 29 percent of juvenile arrests in 2006 (Figure 6). At the felony-level, “other” charges include sex-related offenses,

forgery, and arson, as well as other felonies (such as kidnapping). At the misdemeanor level, offense types include other theft-related charges, prostitution and other sex-related offenses, disturbing the peace, vandalism/graffiti, hit-and-run, selected traffic offenses, violations of city/county ordinances, failure to appear in court, and other charges (such as contributing to the delinquency of a minor).

Over the past five years, the number of adult arrests for other offenses was up six percent, although there was a decrease between 2004 and 2005 (Figure 12 and Table 21). For juveniles, there was no clear trend between 2002 and 2006, with the 5,078 arrests in 2006 representing a seven percent increase from 2005 (Table 34).

Figure 12
NUMBER OF ARRESTS FOR OTHER OFFENSES INCREASED IN PAST YEAR



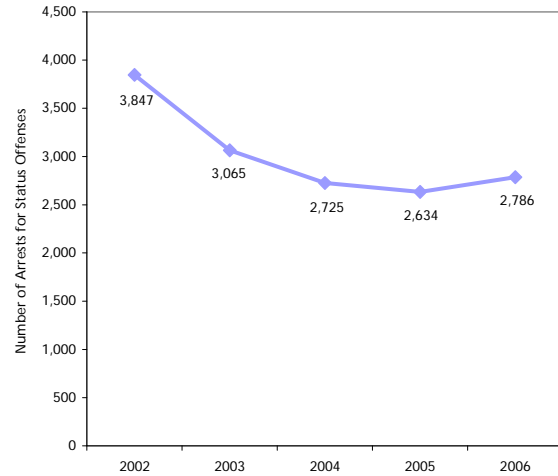
SOURCES: California Department of Justice; SANDAG

Status Offenses

There were 2,786 status offense arrests in 2006 (Figure 13). For four of the past five years, the number of status offense arrests declined (28%), with an increase of six percent from 2005 to 2006 (Table 40). Over the past year, the number of arrests for

truancy increased to the greatest degree (26%), compared to other status offenses.

Figure 13
NUMBER OF STATUS OFFENSE ARRESTS HAS INCREASED SINCE LAST YEAR



SOURCES: California Department of Justice; SANDAG

SUMMARY

Across the San Diego region, an average of 271 adults and 48 juveniles were arrested each day in 2006. Arrest rates in 2006 were lower for both adults and juveniles, compared to ten years earlier, but the juvenile rate was slightly higher than in 2005. More than one in every two adult arrests was for an alcohol- or other drug-related offense. Juveniles represented around one in every three weapons offenses, but only five percent of all alcohol/drug arrests.

This information and other trends and changes described here supplement crime statistics reported for the region on a bi-annual basis by including a greater variety of offense types and enabling analyses by offender characteristic.

LIST OF TABLES

Table 1	Total Arrest Rates by Jurisdiction, 2002, 2005, and 2006.....	Page 14
Table 2	Total Arrest Rates by Age, 2002, 2005, and 2006	Page 15
Table 3	Total Arrest Rates by Ethnicity, 2002, 2005, and 2006	Page 16
Table 4	Felony Arrest Rates by Jurisdiction, 2002, 2005, and 2006	Page 17
Table 5	Misdemeanor Arrest Rates by Jurisdiction, 2002, 2005, and 2006	Page 18
Table 6	Total Arrest Rates, Five California Counties and State of California, Adults and Juveniles, 2002, 2005, and 2006	Page 19
Table 7	Adult Arrest Rates by Jurisdiction, 2002, 2005, and 2006	Page 20
Table 8	Adult Felony Arrest Rates by Jurisdiction, 2002, 2005, and 2006	Page 21
Table 9	Adult Misdemeanor Arrest Rates by Jurisdiction, 2002, 2005, and 2006	Page 22
Table 10	Juvenile Arrest Rates by Jurisdiction, 2002, 2005, and 2006.....	Page 23
Table 11	Juvenile Felony Arrest Rates by Jurisdiction, 2002, 2005, and 2006.....	Page 24
Table 12	Juvenile Misdemeanor Arrest Rates by Jurisdiction, 2002, 2005, and 2006.....	Page 25
Table 13	Juvenile Status Offense Arrest Rates by Jurisdiction, 2002, 2005, and 2006	Page 26
Table 14	Number of Adult Arrests by Jurisdiction, 2002, 2005, and 2006	Page 27
Table 15	Number of Adult Felony Arrests by Offense Type and Jurisdiction, San Diego Region, 2006	Page 28
Table 16	Number of Adult Misdemeanor Arrests by Offense Type and Jurisdiction, San Diego Region, 2006	Page 29
Table 17	Number of Adult Felony Arrests by Offense Type and Jurisdiction, San Diego Region, 2005	Page 30
Table 18	Number of Adult Misdemeanor Arrests by Offense Type and Jurisdiction, San Diego Region, 2005	Page 31
Table 19	Number of Adult Felony Arrests by Offense Type and Jurisdiction, San Diego Region, 2002	Page 32

Table 20	Number of Adult Misdemeanor Arrests by Offense Type and Jurisdiction, San Diego Region, 2002	Page 33
Table 21	Number of Adult Arrests by Type, 2002, 2005, and 2006	Page 34
Table 22	Number of Adult Arrests for Violent Offenses by Type, 2002, 2005, and 2006	Page 34
Table 23	Number of Adult Arrests for Property Offenses by Type, 2002, 2005, and 2006	Page 35
Table 24	Number of Adult Arrests for Alcohol- and Drug-Related Offenses by Type, 2002, 2005, and 2006	Page 35
Table 25	Number of Adult Arrests for Weapons Violations, 2002, 2005, and 2006	Page 36
Table 26	Number of Adult Felony and Misdemeanor Arrests for "Other" Offenses by Type, 2002, 2005, and 2006	Page 36
Table 27	Number of Juvenile Arrests by Jurisdiction, 2002, 2005, and 2006	Page 37
Table 28	Number of Juvenile Felony Arrests by Offense Type and Jurisdiction, San Diego Region, 2006	Page 38
Table 29	Number of Juvenile Misdemeanor and Status Arrests by Offense Type and Jurisdiction, San Diego Region, 2006	Page 39
Table 30	Number of Juvenile Felony Arrests by Offense Type and Jurisdiction, San Diego Region, 2005	Page 40
Table 31	Number of Juvenile Misdemeanor and Status Arrests by Offense Type and Jurisdiction, San Diego Region, 2005	Page 41
Table 32	Number of Juvenile Felony Arrests by Offense Type and Jurisdiction, San Diego Region, 2002	Page 42
Table 33	Number of Juvenile Misdemeanor and Status Arrests by Offense Type and Jurisdiction, San Diego Region, 2002	Page 43
Table 34	Number of Juvenile Arrests by Type, 2002, 2005, and 2006	Page 44
Table 35	Number of Juvenile Arrests for Violent Offenses, 2002, 2005, and 2006	Page 44
Table 36	Number of Juvenile Arrests for Property Offenses, 2002, 2005, and 2006	Page 45
Table 37	Number of Juvenile Arrests for Alcohol- and Drug-Related Offenses, 2002, 2005, and 2006	Page 45

Table 38	Number of Juvenile Arrests for Weapons Violations, 2002, 2005, and 2006	Page 46
Table 39	Number of Juvenile Arrests for Felony and Misdemeanor “Other” Offenses by Type, 2002, 2005, and 2006	Page 46
Table 40	Number of Arrests for Status Offenses by Gender, 2002, 2005, and 2006	Page 47
Table 41	Population Estimations, San Diego Region, 2002, 2005, and 2006	Page 48
Table 42	Population Estimations by Jurisdiction, San Diego Region, 2002, 2005, and 2006	Page 49

Table 1
TOTAL ARREST RATES BY JURISDICTION
2002, 2005, and 2006

	2002	2005	2006	Change	
				2002-2006	2005-2006
Carlsbad	31.3	32.3	41.0	31%	27%
Chula Vista	31.2	29.2	30.9	-1%	6%
Coronado	20.2	18.6	22.7	12%	22%
El Cajon	54.7	62.7	61.1	12%	-3%
Escondido	53.0	55.5	57.1	8%	3%
La Mesa	31.4	31.0	32.9	5%	6%
National City	43.8	46.3	38.5	-12%	-17%
Oceanside	46.5	57.0	57.8	24%	1%
San Diego	50.2	47.3	45.4	-10%	-4%
Sheriff - Total	23.3	25.7	24.8	6%	-3%
Del Mar	23.5	26.9	37.2	58%	38%
Encinitas	22.9	24.5	22.6	-1%	-8%
Imperial Beach	46.1	58.2	50.4	9%	-13%
Lemon Grove	24.0	34.2	34.6	44%	1%
Poway	16.3	20.6	20.0	23%	-3%
San Marcos	22.9	22.8	25.8	13%	13%
Santee	21.4	31.0	34.7	62%	12%
Solana Beach	17.0	14.9	14.1	-17%	-5%
Vista	24.6	33.2	30.7	25%	-8%
Unincorporated	22.8	22.5	21.4	-6%	-5%
TOTAL	44.0	44.3	44.1	<1%	<-1%

NOTES: Total includes felony, misdemeanor, and status offense arrests. The populations used to calculate arrest rates include individuals ten years and older (10-17 for juveniles and 18 and older for adults).

SOURCES: California Department of Justice, Criminal Justice Statistics Center; SANDAG, Demographic/Economic Estimates, September 2006

Table 2
TOTAL ARREST RATES BY AGE
2002, 2005, and 2006

	2002	2005	2006	Change	
				2002-2006	2005-2006
14 and Under	28.1	23.2	24.1	-14%	4%
15-17	111.3	93.4	93.0	-16%	<-1%
18-24	90.3	91.5	91.6	1%	<1%
25-29	57.0	66.7	70.2	23%	5%
30-39	50.6	49.6	47.5	-6%	-4%
40 and Over	21.4	24.0	23.8	11%	-1%
TOTAL	44.0	44.3	44.1	<1%	<-1%

NOTES: Total includes felony, misdemeanor, and status offense arrests for those 14 and under and age 15-17; total includes felony and misdemeanor arrests for those age 18 and older. The populations used to calculate arrest rates include individuals ten years and older (10-17 for juveniles and 18 and older for adults).

SOURCES: California Department of Justice, Criminal Justice Statistics Center; SANDAG, Demographic/Economic Estimates, September 2006

Table 3
TOTAL ARREST RATES BY ETHNICITY
2002, 2005, and 2006

	2002	2005	2006	Change	
				2002-2006	2005-2006
White	36.6	36.5	36.9	1%	1%
Adult	35.3	36.5	36.8	4%	1%
Juvenile	48.1	36.9	37.1	-23%	1%
Black	132.2	134.0	129.4	-2%	-3%
Adult	127.9	135.5	131.9	3%	-3%
Juvenile	154.0	126.2	115.9	-25%	-8%
Hispanic	53.9	54.9	54.5	1%	-1%
Adult	52.1	54.2	52.3	<1%	-3%
Juvenile	61.4	58.1	63.8	4%	10%
Other	20.8	19.6	19.1	-8%	-3%
Adult	18.7	18.5	18.5	-1%	<1%
Juvenile	33.0	26.8	23.4	-29%	-13%
Total	44.0	44.3	44.1	<1%	<-1%
Adult	41.8	43.5	43.1	3%	-1%
Juvenile	57.7	49.4	50.6	-12%	2%

NOTES: Adult rates include felony and misdemeanor arrests; juvenile rates include felony, misdemeanor, and status arrests. Totals include felony, misdemeanor, and status arrests. The populations used to calculate arrest rates include individuals ten years and older (10-17 for juveniles and 18 and older for adults).

SOURCES: California Department of Justice, Criminal Justice Statistics Center; SANDAG, Demographic/Economic Estimates, September 2006

Table 4
FELONY ARREST RATES BY JURISDICTION
2002, 2005, and 2006

	2002	2005	2006	Change	
				2002-2006	2005-2006
Carlsbad	10.1	10.1	10.6	5%	5%
Chula Vista	14.2	13.5	15.1	6%	12%
Coronado	5.6	4.3	4.8	-14%	12%
El Cajon	18.8	22.2	22.4	19%	1%
Escondido	16.8	18.1	18.1	8%	<1%
La Mesa	12.8	12.8	14.6	14%	14%
National City	19.5	21.3	16.2	-17%	-24%
Oceanside	14.5	15.8	16.2	12%	3%
San Diego	14.4	15.6	14.1	-2%	-10%
Sheriff - Total	8.9	10.1	9.5	7%	-6%
Del Mar	4.6	6.5	5.5	20%	-15%
Encinitas	5.6	6.9	6.0	7%	-13%
Imperial Beach	11.1	12.0	11.7	5%	-2%
Lemon Grove	11.6	14.8	14.5	25%	-2%
Poway	4.7	6.5	6.2	32%	-5%
San Marcos	7.9	8.6	9.4	19%	9%
Santee	7.1	9.6	9.7	37%	1%
Solana Beach	4.4	4.9	3.7	-16%	-24%
Vista	10.8	13.1	11.8	9%	-10%
Unincorporated	9.8	10.5	9.7	-1%	-8%
TOTAL	13.3	14.3	13.8	4%	-3%

NOTE: The populations used to calculate arrest rates include individuals ten years and older (10-17 for juveniles and 18 and older for adults).

SOURCES: California Department of Justice, Criminal Justice Statistics Center; SANDAG, Demographic/Economic Estimates, September 2006

Table 5
MISDEMEANOR ARREST RATES BY JURISDICTION
2002, 2005, and 2006

	2002	2005	2006	Change	
				2002-2006	2005-2006
Carlsbad	20.6	22.0	23.0	12%	5%
Chula Vista	15.2	14.1	18.4	21%	31%
Coronado	14.6	14.1	17.9	23%	27%
El Cajon	34.4	39.4	37.4	9%	-5%
Escondido	34.3	36.0	37.0	8%	3%
La Mesa	17.5	17.7	18.1	3%	2%
National City	23.6	24.2	21.7	-8%	-10%
Oceanside	30.2	39.7	39.5	31%	<-1%
San Diego	33.9	30.6	30.2	-11%	-1%
Sheriff - Total	13.2	15.0	14.5	10%	-3%
Del Mar	18.2	20.4	31.5	73%	54%
Encinitas	16.5	16.9	16.0	-3%	-5%
Imperial Beach	32.0	45.3	37.4	17%	-17%
Lemon Grove	11.7	18.8	19.5	67%	4%
Poway	11.0	13.7	13.2	20%	-4%
San Marcos	14.3	13.5	15.4	8%	14%
Santee	12.8	20.1	23.3	82%	16%
Solana Beach	12.2	9.9	10.4	-15%	5%
Vista	13.0	19.4	18.4	42%	-5%
Unincorporated	11.9	11.5	10.9	-8%	-5%
TOTAL	29.1	28.9	29.2	<1%	1%

NOTE: The populations used to calculate arrest rates include individuals ten years and older (10-17 for juveniles and 18 and older for adults).

SOURCES: California Department of Justice, Criminal Justice Statistics Center; SANDAG, Demographic/Economic Estimates, September 2006

Table 6
TOTAL ARREST RATES, FIVE CALIFORNIA COUNTIES AND STATE OF CALIFORNIA
ADULTS AND JUVENILES
2002, 2005, and 2006

	2002	2005	2006	Change	
				2002-2006	2005-2006
Los Angeles					
Adult	39.9	44.7	44.5	12%	<-1%
Juvenile	45.2	42.3	45.0	<-1%	6%
Total	40.7	44.4	44.6	10%	<1%
Orange					
Adult	38.2	36.9	36.7	-4%	-1%
Juvenile	39.6	35.9	38.6	-3%	8%
Total	38.4	36.8	37.0	-4%	1%
Riverside					
Adult	41.6	38.8	39.6	-5%	2%
Juvenile	34.3	30.6	34.0	-1%	11%
Total	40.4	37.4	38.6	-4%	3%
San Diego					
Adult	41.8	43.5	43.1	3%	-1%
Juvenile	57.7	49.4	50.6	-12%	2%
Total	44.0	44.3	44.1	<1%	<-1%
Santa Clara					
Adult	40.2	38.9	37.8	-6%	-3%
Juvenile	53.5	63.1	62.5	17%	-1%
Total	41.8	42.0	40.9	-2%	-3%
Statewide					
Adult	46.2	47.8	47.7	3%	<-1%
Juvenile	53.4	47.3	50.0	-6%	6%
STATEWIDE TOTAL	47.2	47.7	48.0	2%	1%

NOTE: The populations used to calculate arrest rates include individuals ten years and older (10-17 for juveniles and 18 and older for adults).

SOURCES: California Department of Justice, Criminal Justice Statistics Center; California Department of Finance July 2007; SANDAG, Demographic/Economic Estimates, September 2006

Table 7
ADULT ARREST RATES BY JURISDICTION
2002, 2005, and 2006

	2002	2005	2006	Change	
				2002-2006	2005-2006
Carlsbad	28.3	31.7	33.0	17%	4%
Chula Vista	27.7	26.7	32.5	17%	22%
Coronado	19.2	16.5	20.0	4%	21%
El Cajon	49.7	60.2	59.3	19%	-1%
Escondido	51.0	54.1	53.9	6%	<-1%
La Mesa	28.8	29.9	31.6	10%	6%
National City	41.7	45.3	34.0	-18%	-25%
Oceanside	46.3	58.6	58.6	27%	<1%
San Diego	47.1	45.8	43.9	-7%	-4%
Sheriff - Total	20.8	24.3	23.2	12%	-5%
Del Mar	22.9	28.3	36.9	61%	30%
Encinitas	21.3	22.0	20.8	-2%	-5%
Imperial Beach	41.2	57.2	50.6	23%	-12%
Lemon Grove	22.4	35.3	36.4	63%	3%
Poway	11.6	18.5	17.8	53%	-4%
San Marcos	20.5	19.5	20.7	1%	6%
Santee	17.5	26.4	30.7	75%	16%
Solana Beach	16.4	14.8	14.6	-11%	-1%
Vista	23.3	32.3	30.8	32%	-5%
Unincorporated	20.5	21.7	20.1	-2%	-7%
TOTAL	41.8	43.5	43.1	3%	-1%

NOTES: Total includes felony and misdemeanor arrests. The populations used to calculate adult arrest rates include individuals 18 years and older.

SOURCES: California Department of Justice, Criminal Justice Statistics Center; SANDAG, Demographic/Economic Estimates, September 2006

Table 8
ADULT FELONY ARREST RATES BY JURISDICTION
2002, 2005, and 2006

	2002	2005	2006	Change	
				2002-2006	2005-2006
Carlsbad	9.8	10.2	10.0	2%	-2%
Chula Vista	13.9	13.4	14.6	5%	9%
Coronado	5.5	4.3	4.9	-11%	14%
El Cajon	18.5	22.7	23.0	24%	1%
Escondido	17.1	17.7	17.3	1%	-2%
La Mesa	12.6	12.4	14.0	11%	13%
National City	19.7	22.0	14.9	-24%	-32%
Oceanside	14.9	16.4	16.2	9%	-1%
San Diego	14.0	15.8	14.0	<1%	-11%
Sheriff - Total	8.5	9.9	9.2	8%	-7%
Del Mar	n/a	n/a	n/a	--	--
Encinitas	5.3	6.1	5.4	2%	-11%
Imperial Beach	10.1	12.1	11.2	11%	-7%
Lemon Grove	11.1	16.0	15.5	40%	-3%
Poway	3.9	6.0	5.7	46%	-5%
San Marcos	7.2	8.0	7.8	8%	-2%
Santee	6.6	8.5	8.7	32%	2%
Solana Beach	4.0	4.8	3.8	-5%	-21%
Vista	10.5	12.7	11.8	12%	-7%
Unincorporated	9.5	10.7	9.6	1%	-10%
TOTAL	13.0	14.5	13.6	5%	-6%

NOTE: The populations used to calculate adult arrest rates include individuals 18 years and older.

SOURCES: California Department of Justice, Criminal Justice Statistics Center; SANDAG, Demographic/Economic Estimates, September 2006

Table 9
ADULT MISDEMEANOR ARREST RATES BY JURISDICTION
2002, 2005, and 2006

	2002	2005	2006	Change	
				2002-2006	2005-2006
Carlsbad	18.5	21.5	22.9	24%	7%
Chula Vista	13.8	13.3	18.0	30%	35%
Coronado	13.7	12.2	15.0	9%	23%
El Cajon	31.2	37.5	36.3	16%	-3%
Escondido	33.9	36.4	36.6	8%	1%
La Mesa	16.3	17.5	17.6	8%	1%
National City	22.0	23.4	19.1	-13%	-18%
Oceanside	31.5	42.2	42.3	34%	<1%
San Diego	33.1	30.0	30.0	-9%	<1%
Sheriff - Total	12.3	14.3	14.0	14%	-2%
Del Mar	18.1	21.8	31.5	74%	45%
Encinitas	16.1	16.0	15.3	-5%	-4%
Imperial Beach	31.1	45.1	39.4	27%	-13%
Lemon Grove	11.3	19.4	20.9	85%	8%
Poway	7.8	12.5	12.0	54%	-4%
San Marcos	13.3	11.5	12.9	-3%	12%
Santee	10.9	17.9	22.0	102%	23%
Solana Beach	12.4	10.0	10.8	-13%	8%
Vista	12.9	19.6	18.9	47%	-4%
Unincorporated	11.0	11.1	10.5	-5%	-5%
TOTAL	28.8	29.0	29.5	2%	2%

NOTE: The populations used to calculate adult arrest rates include individuals 18 years and older.

SOURCES: California Department of Justice, Criminal Justice Statistics Center; SANDAG, Demographic/Economic Estimates, September 2006

Table 10
JUVENILE ARREST RATES BY JURISDICTION
2002, 2005, and 2006

	2002	2005	2006	Change	
				2002-2006	2005-2006
Carlsbad	52.8	36.4	38.5	-27%	6%
Chula Vista	50.3	43.6	50.5	<1%	16%
Coronado	30.8	44.4	55.9	82%	26%
El Cajon	85.1	77.6	71.8	-16%	-7%
Escondido	64.1	63.2	74.3	16%	18%
La Mesa	54.2	40.4	44.4	-18%	10%
National City	55.5	51.9	65.2	17%	26%
Oceanside	47.6	47.3	53.1	12%	12%
San Diego	72.5	58.4	55.8	-23%	-4%
Sheriff - Total	37.3	34.0	34.9	-6%	3%
Del Mar	n/a	n/a	n/a	--	--
Encinitas	34.0	42.9	36.3	7%	-15%
Imperial Beach	73.9	64.5	49.3	-33%	-24%
Lemon Grove	32.8	28.2	24.3	-26%	-14%
Poway	37.1	31.1	31.3	-16%	1%
San Marcos	37.9	42.1	55.8	47%	33%
Santee	43.2	58.1	59.7	38%	3%
Solana Beach	n/a	n/a	n/a	--	--
Vista	31.5	38.8	30.2	-4%	-22%
Unincorporated	36.5	26.9	29.7	-19%	10%
TOTAL	57.7	49.4	50.6	-12%	2%

NOTES: Total includes felony, misdemeanor, and status offense arrests. The populations used to calculate juvenile arrest rates include individuals 10-17 years of age. Rates per 1,000 youth are not presented if either comparison number of arrests is 30 or less.

SOURCES: California Department of Justice, Criminal Justice Statistics Center; SANDAG, Demographic/Economic Estimates, September 2006

Table 11
JUVENILE FELONY ARREST RATES BY JURISDICTION
2002, 2005, and 2006

	2002	2005	2006	Change	
				2002-2006	2005-2006
Carlsbad	12.0	9.9	14.4	20%	45%
Chula Vista	15.7	14.1	18.0	15%	28%
Coronado	n/a	n/a	n/a	--	--
El Cajon	20.4	18.8	19.0	-7%	1%
Escondido	15.1	20.6	22.4	48%	9%
La Mesa	14.8	15.7	19.2	30%	22%
National City	18.4	17.8	23.5	28%	32%
Oceanside	12.0	11.9	15.6	30%	31%
San Diego	17.6	14.2	15.5	-12%	9%
Sheriff - Total	11.4	10.9	11.4	<1%	5%
Del Mar	n/a	n/a	n/a	--	--
Encinitas	8.2	13.1	10.3	26%	-21%
Imperial Beach	16.3	11.6	14.7	-10%	27%
Lemon Grove	14.2	8.3	8.8	-38%	6%
Poway	8.4	8.6	8.6	2%	<1%
San Marcos	12.1	12.3	19.2	59%	56%
Santee	9.6	15.9	15.6	63%	-2%
Solana Beach	n/a	n/a	n/a	--	--
Vista	12.7	15.6	11.5	-9%	-26%
Unincorporated	11.7	9.2	10.2	-13%	11%
TOTAL	15.0	13.5	15.2	1%	13%

NOTES: The populations used to calculate juvenile arrest rates include individuals 10-17 years of age. Rates per 1,000 youth are not presented if either comparison number of arrests is 30 or less.

SOURCES: California Department of Justice, Criminal Justice Statistics Center; SANDAG, Demographic/Economic Estimates, September 2006

Table 12
JUVENILE MISDEMEANOR ARREST RATES BY JURISDICTION
2002, 2005, and 2006

	2002	2005	2006	Change	
				2002-2006	2005-2006
Carlsbad	35.6	25.6	23.6	-34%	-8%
Chula Vista	22.9	18.7	21.3	-7%	14%
Coronado	24.0	37.6	51.5	115%	37%
El Cajon	53.4	50.9	43.9	-18%	-14%
Escondido	36.2	33.4	39.2	8%	17%
La Mesa	28.4	19.9	22.6	-20%	14%
National City	32.1	29.1	36.7	14%	26%
Oceanside	22.6	25.1	22.6	<1%	-10%
San Diego	39.8	34.5	31.9	-20%	-8%
Sheriff - Total	18.6	18.8	17.8	-4%	-5%
Del Mar	n/a	n/a	n/a	--	--
Encinitas	19.9	23.9	21.6	9%	-10%
Imperial Beach	37.3	46.3	24.8	-34%	-46%
Lemon Grove	13.3	15.7	11.8	-11%	-25%
Poway	25.7	20.1	19.5	-24%	-3%
San Marcos	20.9	25.3	30.1	44%	19%
Santee	23.3	32.9	31.9	37%	-3%
Solana Beach	n/a	n/a	n/a	--	--
Vista	13.4	18.1	15.6	16%	-14%
Unincorporated	16.9	14.1	13.8	-18%	-2%
TOTAL	31.2	28.3	27.3	-12%	-4%

NOTES: The populations used to calculate juvenile arrest rates include individuals 10-17 years of age. Rates per 1,000 youth are not presented if either comparison number of arrests is 30 or less.

SOURCES: California Department of Justice, Criminal Justice Statistics Center; SANDAG, Demographic/Economic Estimates, September 2006

Table 13
JUVENILE STATUS OFFENSE ARREST RATES BY JURISDICTION
2002, 2005, and 2006

	2002	2005	2006	Change	
				2002-2006	2005-2006
Carlsbad	5.1	n/a	n/a	--	--
Chula Vista	11.8	10.8	11.2	-5%	4%
Coronado	n/a	n/a	n/a	--	--
El Cajon	11.3	7.9	8.9	-21%	13%
Escondido	12.8	9.2	12.6	-2%	37%
La Mesa	11.0	n/a	n/a	--	--
National City	5.0	5.0	5.0	<1%	<1%
Oceanside	12.9	10.2	14.9	16%	46%
San Diego	15.1	9.6	8.5	-44%	-11%
Sheriff - Total	7.4	4.3	5.7	-23%	33%
Del Mar	n/a	n/a	n/a	--	--
Encinitas	5.9	5.9	n/a	--	--
Imperial Beach	20.4	6.6	9.8	-52%	48%
Lemon Grove	n/a	n/a	n/a	--	--
Poway	n/a	n/a	n/a	--	--
San Marcos	4.8	4.5	6.5	35%	44%
Santee	10.3	9.3	12.3	19%	32%
Solana Beach	n/a	n/a	n/a	--	--
Vista	5.4	5.2	3.2	-41%	-38%
Unincorporated	7.9	3.6	5.7	-28%	58%
TOTAL	11.5	7.6	8.1	-30%	7%

NOTES: Status offenses, applicable only to juveniles, include truancy, runaway, curfew violations, incorrigible behavior, and other juvenile-specific offenses (e.g., failure to obey orders of the Juvenile Court and running away from court-ordered placement). The populations used to calculate juvenile arrest rates include individuals 10-17 years of age. Rates per 1,000 youth are not presented if either comparison number of arrests is 30 or less.

SOURCES: California Department of Justice, Criminal Justice Statistics Center; SANDAG, Demographic/Economic Estimates, September 2006

Table 14
NUMBER OF ADULT ARRESTS BY JURISDICTION
2002, 2005, and 2006

	2002	2005	2006	Change	
				2002-2006	2005-2006
Carlsbad	1,903	2,289	2,485	31%	9%
Chula Vista	3,795	4,149	5,206	37%	25%
Coronado	420	374	441	5%	18%
El Cajon	3,465	4,220	4,143	20%	-2%
Escondido	4,944	5,375	5,347	8%	-1%
La Mesa	1,278	1,318	1,387	9%	5%
National City	1,725	2,099	1,575	-9%	-25%
Oceanside	5,587	7,281	7,277	30%	<-1%
San Diego	44,999	45,393	43,878	-2%	-3%
Sheriff - Total	12,343	15,121	15,231	23%	1%
Del Mar	89	110	144	62%	31%
Encinitas	988	1,077	1,026	4%	-5%
Imperial Beach	813	1,144	1,017	25%	-11%
Lemon Grove	411	653	674	64%	3%
Poway	411	689	672	64%	-2%
San Marcos	898	1,020	1,141	27%	12%
Santee	685	1,069	1,261	84%	18%
Solana Beach	178	163	161	-10%	-1%
Vista	1,533	2,168	2,084	36%	-4%
Unincorporated	6,337	7,028	7,051	11%	<1%
San Diego Harbor Police	1,533	1,357	1,550	1%	14%
California Highway Patrol	7,944	8,456	8,908	12%	5%
California State University San Marcos	9	76	118	--	55%
San Diego State University	555	680	831	50%	22%
University of California San Diego	182	192	204	12%	6%
State Parks and Recreation	385	494	436	13%	-12%
TOTAL	91,067	98,874	99,017	9%	<1%

NOTES: Total includes felony and misdemeanor arrests. Percent changes are not presented when either comparison number equals 30 or less.

SOURCES: California Department of Justice, Criminal Justice Statistics Center; SANDAG

Table 15
NUMBER OF ADULT FELONY ARRESTS BY OFFENSE TYPE AND JURISDICTION
San Diego Region, 2006

	Homicide	Rape	Robbery	Aggravated Assault	Weapons Offenses	Burglary	Larceny	Motor Vehicle Theft	Drug Law Violations	Driving Under the Influence	Other	TOTAL
Carlsbad	1	0	12	156	19	108	86	29	259	9	78	757
Chula Vista	2	17	74	466	118	340	290	63	744	16	202	2,332
Coronado	0	0	1	19	1	17	27	10	8	6	20	109
El Cajon	6	10	35	313	64	212	172	108	580	3	106	1,609
Escondido	1	12	52	405	69	194	171	100	423	22	270	1,719
La Mesa	2	2	26	148	24	109	80	32	125	7	61	616
National City	3	4	42	165	34	84	99	40	120	7	93	691
Oceanside	5	7	42	621	91	235	171	46	540	49	211	2,018
San Diego	67	56	442	2,719	486	1,126	1,206	564	5,238	42	2,006	13,952
Sheriff - Total	12	21	152	1,476	271	923	573	308	1,665	34	595	6,030
Del Mar	0	0	1	4	1	2	1	1	7	0	4	21
Encinitas	0	1	7	69	13	44	25	6	77	3	24	269
Imperial Beach	0	0	8	76	9	20	13	14	66	1	18	225
Lemon Grove	0	1	8	66	12	69	24	13	76	3	15	287
Poway	0	1	1	50	9	34	31	7	64	4	16	217
San Marcos	2	2	13	97	32	71	42	20	97	2	52	430
Santee	0	1	10	79	19	66	32	10	94	4	43	358
Solana Beach	0	0	4	8	0	11	2	6	8	0	3	42
Vista	1	3	24	207	37	131	59	26	238	9	68	803
Unincorporated	9	12	76	820	139	475	344	205	938	8	352	3,378
San Diego Harbor Police	0	0	0	44	19	27	29	6	120	2	37	284
California Highway Patrol	6	0	2	47	16	3	24	370	75	264	118	925
California State University San Marcos	0	0	1	1	0	1	0	0	9	0	3	15
San Diego State University	0	0	10	2	12	18	16	0	58	1	7	124
University of California San Diego	0	0	0	3	2	6	18	1	3	0	2	35
State Parks and Recreation	0	0	0	4	2	2	2	1	4	1	5	21
TOTAL	105	129	891	6,589	1,228	3,405	2,964	1,678	9,971	463	3,814	31,237

NOTES: Homicide includes manslaughter (vehicular and non-vehicular). Other felony offenses include: kidnapping, forgery/checks/access cards, other theft-related offenses, arson, lewd conduct and other sex-related crimes, hit-and-run, and escape, bookmaking, and other felonies.

SOURCES: California Department of Justice, Criminal Justice Statistics Center; SANDAG

Table 16
NUMBER OF ADULT MISDEMEANOR ARRESTS BY OFFENSE TYPE AND JURISDICTION
San Diego Region, 2006

	Manslaughter/ Assault and Battery	Weapons Offenses	Misd. Burglary	Petty Theft	Vandalism	Drug Law Violations	Drunk/ Liquor Laws	Driving Under the Influence	Prostitution	Other	TOTAL
Carlsbad	145	6	0	89	8	268	606	442	2	162	1,728
Chula Vista	427	13	0	255	59	554	452	696	6	412	2,874
Coronado	15	0	0	11	3	27	65	162	0	49	332
El Cajon	223	9	0	159	19	814	530	258	18	504	2,534
Escondido	302	16	0	166	16	759	608	1,028	39	694	3,628
La Mesa	116	0	0	63	2	107	141	217	2	123	771
National City	74	8	0	103	6	196	194	147	71	85	884
Oceanside	386	36	0	132	25	726	1,257	917	120	1,660	5,259
San Diego	2,781	78	7	1,082	246	6,716	4,201	4,130	437	10,248	29,926
Sheriff - Total	1,332	48	0	275	97	1,591	2,812	1,630	6	1,410	9,201
Del Mar	15	1	0	1	1	5	55	40	0	5	123
Encinitas	76	1	0	29	10	64	263	274	0	40	757
Imperial Beach	59	5	0	8	8	63	215	172	0	262	792
Lemon Grove	52	1	0	11	3	70	166	56	0	28	387
Poway	59	2	0	7	12	108	89	109	0	69	455
San Marcos	103	6	0	58	7	83	179	214	0	61	711
Santee	112	7	0	35	11	101	213	175	0	249	903
Solana Beach	14	0	0	8	1	1	49	40	0	6	119
Vista	174	3	0	33	8	269	422	271	3	98	1,281
Unincorporated	668	22	0	85	36	827	1,161	279	3	592	3,673
San Diego Harbor Police	67	75	0	20	5	337	102	96	0	564	1,266
California Highway Patrol	35	4	0	0	3	45	14	7,565	0	317	7,983
California State University San Marcos	4	1	0	2	0	7	49	29	0	11	103
San Diego State University	36	4	0	61	0	144	262	112	0	88	707
University of California San Diego	8	1	0	7	2	14	39	41	0	57	169
State Parks and Recreation	16	3	1	2	2	28	75	38	0	250	415
TOTAL	5,967	302	8	2,427	493	12,333	11,407	17,508	701	16,634	67,780

NOTES: Misdemeanor drug law violations include glue sniffing. Other misdemeanors include: check/access cards, other theft-related offenses, annoying a child, obscene matter, lewd conduct and other sex-related crimes, contributing to the delinquency of a minor, hit-and-run and other selected traffic offenses, and other misdemeanors.

SOURCES: California Department of Justice, Criminal Justice Statistics Center; SANDAG

Table 17
NUMBER OF ADULT FELONY ARRESTS BY OFFENSE TYPE AND JURISDICTION
San Diego Region, 2005

	Homicide	Rape	Robbery	Aggravated Assault	Weapons Offenses	Burglary	Larceny	Motor Vehicle Theft	Drug Law Violations	Driving Under the Influence	Other	TOTAL
Carlsbad	0	0	14	138	13	106	102	29	256	10	66	734
Chula Vista	3	19	71	463	94	308	302	109	516	25	169	2,079
Coronado	0	2	4	13	3	19	12	5	21	4	14	97
El Cajon	6	5	36	271	69	189	175	95	623	2	123	1,594
Escondido	4	3	47	418	70	179	160	75	442	47	310	1,755
La Mesa	1	2	24	130	12	64	68	36	102	5	103	547
National City	3	1	30	255	42	129	121	80	234	11	111	1,017
Oceanside	3	4	50	623	80	198	161	65	618	54	181	2,037
San Diego	55	53	371	3,139	498	1,166	1,211	675	6,425	29	2,012	15,634
Sheriff - Total	9	29	134	1,456	220	928	615	391	1,716	30	665	6,193
Del Mar	0	0	2	4	0	6	1	1	3	0	8	25
Encinitas	1	1	8	50	10	41	26	10	103	6	40	296
Imperial Beach	0	2	3	78	8	26	13	16	68	4	24	242
Lemon Grove	0	2	9	49	13	66	26	22	80	2	26	295
Poway	0	1	9	52	3	30	27	11	69	1	22	225
San Marcos	1	1	9	84	27	77	67	28	96	1	28	419
Santee	0	2	7	96	21	64	37	20	70	1	26	344
Solana Beach	0	0	5	6	1	7	9	2	15	0	8	53
Vista	1	5	22	196	22	148	63	52	254	4	85	852
Unincorporated	6	15	60	841	115	463	346	229	958	11	398	3,442
San Diego Harbor Police	0	0	3	29	13	13	18	5	110	2	24	217
California Highway Patrol	5	0	1	55	9	2	37	245	111	272	130	867
California State University San Marcos	0	0	0	1	1	0	1	0	7	0	0	10
San Diego State University	0	0	4	3	12	5	10	0	43	0	6	83
University of California San Diego	0	0	1	1	1	5	9	6	1	0	0	24
State Parks and Recreation	0	0	0	1	2	0	3	0	3	0	2	11
TOTAL	89	118	790	6,996	1,139	3,311	3,005	1,816	11,228	491	3,916	32,899

NOTES: Homicide includes manslaughter (vehicular and non-vehicular). Other felony offenses include: kidnapping, forgery/checks/access cards, other theft-related offenses, arson, lewd conduct and other sex-related crimes, hit-and-run, and escape, bookmaking, and other felonies.

SOURCES: California Department of Justice, Criminal Justice Statistics Center; SANDAG

Table 18
NUMBER OF ADULT MISDEMEANOR ARRESTS BY OFFENSE TYPE AND JURISDICTION
San Diego Region, 2005

	Manslaughter/ Assault and Battery	Weapons Offenses	Misd. Burglary	Petty Theft	Vandalism	Drug Law Violations	Drunk/ Liquor Laws	Driving Under the Influence	Prostitution	Other	TOTAL
Carlsbad	145	5	0	105	10	235	592	342	3	118	1,555
Chula Vista	351	14	0	201	44	397	222	480	2	359	2,070
Coronado	19	0	0	15	2	28	64	113	0	36	277
El Cajon	222	14	0	160	17	923	441	247	46	556	2,626
Escondido	290	10	0	208	24	766	608	973	14	727	3,620
La Mesa	116	1	0	78	5	94	115	204	4	154	771
National City	130	2	0	175	12	271	198	110	57	127	1,082
Oceanside	400	14	0	271	26	840	1,179	653	137	1,724	5,244
San Diego	2,939	77	5	1,118	262	7,557	3,982	3,882	673	9,264	29,759
Sheriff - Total	1,316	29	0	398	64	1,802	2,375	1,477	15	1,452	8,928
Del Mar	12	0	0	0	0	4	27	34	0	8	85
Encinitas	84	0	0	16	4	75	262	293	0	47	781
Imperial Beach	50	2	0	5	4	94	231	161	0	355	902
Lemon Grove	49	2	0	10	3	80	95	64	0	55	358
Poway	50	3	0	30	2	91	97	133	0	58	464
San Marcos	95	2	0	114	7	86	136	119	1	41	601
Santee	102	1	0	27	6	121	163	138	0	167	725
Solana Beach	14	1	0	2	0	18	31	31	0	13	110
Vista	156	2	0	92	4	327	393	202	13	127	1,316
Unincorporated	704	16	0	102	34	906	940	302	1	581	3,586
San Diego Harbor Police	56	102	1	25	5	308	73	111	0	459	1,140
California Highway Patrol	33	6	0	0	9	63	5	7,069	0	404	7,589
California State University San Marcos	1	0	0	1	0	12	19	27	0	6	66
San Diego State University	21	6	0	57	8	155	195	86	0	69	597
University of California San Diego	7	2	0	12	0	13	52	30	0	52	168
State Parks and Recreation	8	2	0	9	1	32	87	47	0	297	483
TOTAL	6,054	284	6	2,833	489	13,496	10,207	15,851	951	15,804	65,975

NOTES: Misdemeanor drug law violations include glue sniffing. Other misdemeanors include: check/access cards, other theft-related offenses, annoying a child, obscene matter, lewd conduct and other sex-related crimes, contributing to the delinquency of a minor, hit-and-run and other selected traffic offenses, and other misdemeanors.

SOURCES: California Department of Justice, Criminal Justice Statistics Center; SANDAG

Table 19
NUMBER OF ADULT FELONY ARRESTS BY OFFENSE TYPE AND JURISDICTION
San Diego Region, 2002

	Homicide	Rape	Robbery	Aggravated Assault	Weapons Offenses	Burglary	Larceny	Motor Vehicle Theft	Drug Law Violations	Driving Under the Influence	Other	TOTAL
Carlsbad	0	1	15	135	18	84	89	8	236	10	65	661
Chula Vista	6	13	45	467	81	260	274	79	410	20	248	1,903
Coronado	0	1	6	19	4	15	10	5	42	4	14	120
El Cajon	1	2	36	318	62	122	189	33	393	11	123	1,290
Escondido	10	8	47	480	57	122	173	45	367	25	323	1,657
La Mesa	3	3	14	130	18	70	69	18	154	6	72	557
National City	3	5	33	246	24	87	96	13	156	13	139	815
Oceanside	2	11	63	621	77	149	187	26	482	36	141	1,795
San Diego	47	62	352	3,421	379	1,031	1,104	455	5,015	37	1,442	13,345
Sheriff - Total	9	33	129	1,407	191	737	649	153	1,219	21	493	5,041
Del Mar	0	0	0	5	0	4	0	1	7	0	2	19
Encinitas	0	0	7	61	14	51	23	9	56	7	16	244
Imperial Beach	1	3	8	59	8	18	21	4	50	1	27	200
Lemon Grove	0	1	9	49	5	49	21	10	45	2	12	203
Poway	0	0	2	33	3	24	21	0	28	3	22	136
San Marcos	0	2	8	99	20	41	31	4	87	0	23	315
Santee	0	1	7	80	12	36	36	8	60	2	17	259
Solana Beach	0	1	1	12	0	4	7	1	9	0	8	43
Vista	1	3	22	182	24	112	84	12	186	5	56	687
Unincorporated	7	22	65	827	105	398	405	104	691	1	310	2,935
San Diego Harbor Police	0	0	2	23	19	16	25	9	156	2	14	266
California Highway Patrol	8	0	1	103	15	3	55	135	132	249	112	813
California State University San Marcos	0	0	0	0	0	0	0	0	0	0	0	0
San Diego State University	0	0	1	5	9	9	5	9	15	0	4	57
University of California San Diego	0	0	0	2	2	2	3	2	7	0	0	18
State Parks and Recreation	0	0	0	9	2	2	3	4	5	0	4	29
TOTAL	89	139	744	7,386	958	2,709	2,931	994	8,789	434	3,194	28,367

NOTES: Homicide includes manslaughter (vehicular and non-vehicular). Other felony offenses include: kidnapping, forgery/checks/access cards, other theft-related offenses, arson, lewd conduct and other sex-related crimes, hit-and-run, and escape, bookmaking, and other felonies.

SOURCES: California Department of Justice, Criminal Justice Statistics Center; SANDAG

Table 20
NUMBER OF ADULT MISDEMEANOR ARRESTS BY OFFENSE TYPE AND JURISDICTION
San Diego Region, 2002

	Manslaughter/ Assault and Battery	Weapons Offenses	Misd. Burglary	Petty Theft	Vandalism	Drug Law Violations	Drunk/ Liquor Laws	Driving Under the Influence	Prostitution	Other	TOTAL
Carlsbad	132	8	0	133	8	253	292	233	10	173	1,242
Chula Vista	358	10	0	219	40	359	200	338	15	353	1,892
Coronado	20	2	0	2	4	36	49	134	0	53	300
El Cajon	253	1	0	133	15	550	343	312	39	529	2,175
Escondido	320	10	0	138	39	669	447	910	6	748	3,287
La Mesa	166	5	0	64	2	124	105	153	5	97	721
National City	95	4	0	82	11	193	235	116	72	102	910
Oceanside	318	14	0	163	32	630	832	728	125	950	3,792
San Diego	2,911	51	0	1,188	295	7,094	4,913	4,084	741	10,377	31,654
Sheriff - Total	1,130	20	0	330	93	1,178	2,028	1,437	0	1,086	7,302
Del Mar	5	0	0	1	0	4	28	29	0	3	70
Encinitas	68	2	0	22	5	80	186	346	0	35	744
Imperial Beach	89	2	0	6	3	49	267	69	0	128	613
Lemon Grove	34	0	0	13	0	28	63	39	0	31	208
Poway	36	2	0	30	6	35	45	78	0	43	275
San Marcos	89	2	0	13	11	126	125	177	0	40	583
Santee	84	1	0	38	4	82	83	73	0	61	426
Solana Beach	9	0	0	9	1	6	36	63	0	11	135
Vista	131	1	0	32	8	127	243	221	0	83	846
Unincorporated	585	10	0	166	55	641	952	342	0	651	3,402
San Diego Harbor Police	40	29	0	19	3	391	112	176	1	496	1,267
California Highway Patrol	49	11	0	1	7	92	5	6,574	0	392	7,131
California State University San Marcos	0	0	0	0	0	1	0	6	0	2	9
San Diego State University	18	3	1	21	4	81	208	89	0	73	498
University of California San Diego	4	3	0	14	5	28	49	25	0	36	164
State Parks and Recreation	12	0	0	2	1	17	77	37	0	210	356
TOTAL	5,826	171	1	2,509	559	11,696	9,895	15,352	1,014	15,677	62,700

NOTES: Misdemeanor drug law violations include glue sniffing. Other misdemeanors include: check/access cards, other theft-related offenses, annoying a child, obscene matter, lewd conduct and other sex-related crimes, contributing to the delinquency of a minor, hit-and-run and other selected traffic offenses, and other misdemeanors.

SOURCES: California Department of Justice, Criminal Justice Statistics Center; SANDAG

Table 21
NUMBER OF ADULT ARRESTS BY TYPE
2002, 2005, and 2006

	2002	2005	2006	Change	
				2002-2006	2005-2006
Violent	14,184	14,047	13,681	-4%	-3%
Property	9,144	10,971	10,482	15%	-4%
Alcohol/Drug Violations	46,166	51,273	51,682	12%	1%
Weapons Offenses	1,129	1,423	1,530	36%	8%
Other	20,444	21,160	21,642	6%	2%
TOTAL	91,067	98,874	99,017	9%	<1%

NOTE: Violent includes homicide/manslaughter, rape, robbery, aggravated assault, and assault and battery; property includes grand theft, felony and misdemeanor burglary, motor vehicle theft, and petty theft; alcohol/drug includes DUI and drunk/liquor laws; other includes other theft-related offenses, kidnapping, sex crimes, hit-and-run, violations of city and county ordinances, and other offenses.

SOURCES: California Department of Justice, Criminal Justice Statistics Center; SANDAG

Table 22
NUMBER OF ADULT ARRESTS FOR VIOLENT OFFENSES BY TYPE
2002, 2005, and 2006

	2002	2005	2006	Change	
				2002-2006	2005-2006
Felony					
Homicide	89	89	105	18%	18%
Rape	139	118	129	-7%	9%
Robbery	744	790	891	20%	13%
Aggravated Assault	7,386	6,996	6,589	-11%	-6%
Total	8,358	7,993	7,714	-8%	-3%
Misdemeanor					
Manslaughter/ Assault and Battery	5,826	6,054	5,967	2%	-1%
TOTAL	14,184	14,047	13,681	-4%	-3%

NOTE: Homicide includes felony manslaughter (vehicular and non-vehicular).

SOURCES: California Department of Justice, Criminal Justice Statistics Center; SANDAG

Table 23
NUMBER OF ADULT ARRESTS FOR PROPERTY OFFENSES BY TYPE
2002, 2005, and 2006

	2002	2005	2006	Change	
				2002-2006	2005-2006
Felony					
Burglary	2,709	3,311	3,405	26%	3%
Larceny Theft	2,931	3,005	2,964	1%	-1%
Motor Vehicle Theft	994	1,816	1,678	69%	-8%
Total	6,634	8,132	8,047	21%	-1%
Misdemeanor					
Petty Theft/Burglary	2,510	2,839	2,435	-3%	-14%
TOTAL	9,144	10,971	10,482	15%	-4%

SOURCES: California Department of Justice, Criminal Justice Statistics Center; SANDAG

Table 24
NUMBER OF ADULT ARRESTS FOR ALCOHOL- AND DRUG-RELATED OFFENSES BY TYPE
2002, 2005, and 2006

	2002	2005	2006	Change	
				2002-2006	2005-2006
Felony					
Narcotics	2,659	3,038	3,112	17%	2%
Marijuana	670	756	664	-1%	-12%
Dangerous Drugs	5,375	7,374	6,151	14%	-17%
Other Drug Offenses	85	60	44	-48%	-27%
Driving Under the Influence	434	491	463	7%	-6%
Total	9,223	11,719	10,434	13%	-11%
Misdemeanor					
Marijuana	3,703	3,386	3,438	-7%	2%
Other Drug Offenses	7,993	10,110	8,895	11%	-12%
Drunk	7,289	8,413	9,515	31%	13%
Liquor Laws	2,606	1,794	1,892	-27%	5%
Driving Under the Influence	15,352	15,851	17,508	14%	10%
Total	36,943	39,554	41,248	12%	4%
TOTAL	46,166	51,273	51,682	12%	1%

NOTES: Narcotics include heroin, morphine, cocaine/rock, and barbiturates. Dangerous drugs include methamphetamine, depressants, and hallucinogens. Other drug offenses include illegal possession of drug paraphernalia, use of illegal prescriptions and prescription drugs, sales of chemicals used to produce drugs, being under the influence, and other drug-related crimes. Other misdemeanor drug offenses include glue sniffing.

SOURCES: California Department of Justice, Criminal Justice Statistics Center; SANDAG

Table 25
NUMBER OF ADULT ARRESTS FOR WEAPONS VIOLATIONS
2002, 2005, and 2006

	2002	2005	2006	Change	
				2002-2006	2005-2006
Adult					
Felony	958	1,139	1,228	28%	8%
Misdemeanor	171	284	302	77%	6%
TOTAL	1,129	1,423	1,530	36%	8%

SOURCES: California Department of Justice, Criminal Justice Statistics Center; SANDAG

Table 26
NUMBER OF ADULT FELONY AND MISDEMEANOR ARRESTS
FOR "OTHER" OFFENSES BY TYPE
2002, 2005, and 2006

	2002	2005	2006	Change	
				2002-2006	2005-2006
Felony - Other					
Sex-Related	405	641	548	35%	-15%
Forgery/Checks	817	676	606	-26%	-10%
Arson	42	54	36	-14%	-33%
Other Felonies	1,930	2,545	2,624	36%	3%
Total	3,194	3,916	3,814	19%	-3%
Misdemeanor - Other					
Other Theft/Checks/Access Cards	383	545	526	37%	-3%
Sex-Related	411	288	269	-35%	-7%
Prostitution	1,014	951	701	-31%	-26%
Disturb Peace/Trespass/Disorderly	3,555	4,218	3,174	-11%	-25%
Vandalism/Graffiti	559	489	493	-12%	1%
Hit-and-Run	323	429	382	18%	-11%
Selected Traffic	1,020	1,015	1,070	5%	5%
City/County Ordinances	5,795	4,671	4,835	-17%	4%
Failure to Appear/Non Traffic	1,337	1,407	3,200	139%	127%
Other Misdemeanors	2,853	3,231	3,178	11%	-2%
Total	17,250	17,244	17,828	3%	3%
TOTAL	20,444	21,160	21,642	6%	2%

NOTES: Felony sex-related includes lewd behavior and other sex offenses; other felonies include kidnapping, arson, hit-and-run, escape, bookmaking, and other felonies. Misdemeanor sex-related includes lewd behavior, indecent exposure, annoying a child, and obscene matter; selected traffic includes driving without insurance or license, equipment violations, and others; city and county ordinances include loitering, littering, and other codes specific to cities/county; other misdemeanor arrests include contributing to the delinquency of a minor, malicious mischief, joyriding, gambling, non-traffic failure to appear, nonsupport, and other misdemeanors such as various election, building, fire, and water code violations.

SOURCES: California Department of Justice, Criminal Justice Statistics Center; SANDAG

Table 27
NUMBER OF JUVENILE ARRESTS BY JURISDICTION
2002, 2005, and 2006

	2002	2005	2006	Change	
				2002-2006	2005-2006
Carlsbad	495	376	412	-17%	10%
Chula Vista	1,245	1,191	1,391	12%	17%
Coronado	59	84	103	75%	23%
El Cajon	980	925	855	-13%	-8%
Escondido	1,119	1,177	1,389	24%	18%
La Mesa	267	203	222	-17%	9%
National City	429	417	510	19%	22%
Oceanside	971	1,009	1,125	16%	11%
San Diego	9,588	8,016	7,648	-20%	-5%
Sheriff - Total	3,820	3,517	3,606	-6%	3%
Del Mar	9	2	11	--	--
Encinitas	220	278	232	5%	-17%
Imperial Beach	254	216	161	-37%	-25%
Lemon Grove	111	95	80	-28%	-16%
Poway	289	234	227	-21%	-3%
San Marcos	268	376	526	96%	40%
Santee	306	395	399	30%	1%
Solana Beach	27	18	11	--	--
Vista	372	462	359	-3%	-22%
Unincorporated	1,964	1,441	1,600	-19%	11%
San Diego Harbor Police	84	43	52	-38%	21%
California Highway Patrol	121	46	44	-64%	-4%
California State University San Marcos	0	3	12	--	--
San Diego State University	44	54	43	-2%	-20%
University of California San Diego	9	16	14	--	--
State Parks and Recreation	51	51	34	-33%	-33%
TOTAL	19,282	17,128	17,460	-9%	2%

NOTES: Total includes felony, misdemeanor, and status offense arrests. Percent changes are not presented when either comparison number equals 30 or less.

SOURCES: California Department of Justice, Criminal Justice Statistics Center; SANDAG

Table 28
NUMBER OF JUVENILE FELONY ARRESTS BY OFFENSE TYPE AND JURISDICTION
San Diego Region, 2006

	Homicide	Rape	Robbery	Aggravated Assault	Weapons Offenses	Burglary	Larceny	Motor Vehicle Theft	Drug Law Violations	Driving Under the Influence	Other	TOTAL
Carlsbad	0	0	8	30	12	49	12	1	16	0	26	154
Chula Vista	0	5	21	53	66	145	52	7	31	0	116	496
Coronado	0	0	0	2	2	1	0	1	1	0	0	7
El Cajon	1	0	22	45	31	56	12	18	14	0	27	226
Escondido	0	0	22	55	49	76	25	39	19	2	132	419
La Mesa	0	0	8	13	3	38	9	9	6	0	10	96
National City	0	0	17	25	19	63	22	8	9	0	21	184
Oceanside	3	1	27	65	39	60	33	17	32	0	54	331
San Diego	3	6	243	338	228	458	218	122	146	0	357	2,119
Sheriff - Total	1	4	46	200	140	301	133	60	65	0	230	1,180
Del Mar	0	0	0	0	0	1	0	0	0	0	1	2
Encinitas	0	0	0	7	2	26	6	1	10	0	14	66
Imperial Beach	0	2	1	16	7	9	1	1	4	0	7	48
Lemon Grove	0	0	0	7	4	7	3	5	1	0	2	29
Poway	0	1	0	6	3	20	4	1	8	0	19	62
San Marcos	1	0	6	28	32	37	18	11	9	0	39	181
Santee	0	0	4	34	9	18	8	3	10	0	18	104
Solana Beach	0	0	0	0	0	0	0	3	0	0	0	3
Vista	0	0	14	18	13	32	16	6	6	0	31	136
Unincorporated	0	1	21	84	70	151	77	29	17	0	99	549
San Diego Harbor Police	0	0	0	0	1	0	1	1	6	0	1	10
California Highway Patrol	0	0	0	0	1	0	0	7	2	1	1	12
California State University San Marcos	0	0	0	0	0	3	0	0	0	0	1	4
San Diego State University	0	0	1	0	1	0	1	0	0	0	0	3
University of California San Diego	0	0	0	0	1	0	0	1	0	0	0	2
State Parks and Recreation	0	0	0	0	0	0	0	0	0	0	1	1
TOTAL	8	16	415	826	593	1,250	518	291	347	3	977	5,244

NOTES: Homicide includes manslaughter (vehicular and non-vehicular). Other felony offenses include: kidnapping, forgery/checks/access cards, other theft-related offenses, arson, lewd conduct and other sex-related crimes, hit-and-run, and escape, bookmaking, and other felonies.

SOURCES: California Department of Justice, Criminal Justice Statistics Center; SANDAG

Table 29
NUMBER OF JUVENILE MISDEMEANOR AND STATUS ARRESTS BY OFFENSE TYPE AND JURISDICTION
San Diego Region, 2006

	Manslaughter/ Assault and Battery	Weapons Offenses	Misd. Burglary	Petty Theft	Vandalism	Drug Law Violations	Drunk/ Liquor Laws	Driving Under the Influence	Prostitution	Other	Total Misd.	Status	TOTAL
Carlsbad	40	1	0	57	20	52	38	6	0	38	252	6	258
Chula Vista	97	8	0	205	66	60	35	8	0	107	586	309	895
Coronado	6	1	0	4	8	11	13	2	0	50	95	1	96
El Cajon	119	3	0	104	24	72	43	3	1	154	523	106	629
Escondido	104	4	0	119	63	109	67	14	1	253	734	236	970
La Mesa	20	1	0	52	6	12	10	1	0	11	113	13	126
National City	25	0	0	184	10	20	13	1	11	23	287	39	326
Oceanside	84	22	0	72	44	85	61	12	3	96	479	315	794
San Diego	625	33	2	585	253	379	294	35	32	2,131	4,369	1,160	5,529
Sheriff - Total	382	24	0	199	118	322	225	38	1	531	1,840	586	2,426
Del Mar	2	0	0	0	0	0	5	1	0	0	8	1	9
Encinitas	13	1	0	26	3	23	18	9	0	45	138	28	166
Imperial Beach	11	2	0	1	4	18	11	1	0	33	81	32	113
Lemon Grove	13	0	0	1	0	8	11	0	0	6	39	12	51
Poway	20	1	0	20	5	21	24	10	0	40	141	24	165
San Marcos	53	1	0	56	27	31	24	1	0	91	284	61	345
Santee	38	0	0	20	10	22	14	4	0	105	213	82	295
Solana Beach	0	0	0	1	0	3	0	0	0	4	8	0	8
Vista	55	1	0	15	13	38	31	2	0	30	185	38	223
Unincorporated	177	18	0	59	56	158	87	10	1	177	743	308	1,051
San Diego Harbor Police	4	3	0	0	0	6	0	0	0	21	34	8	42
California Highway Patrol	1	0	0	0	0	0	0	28	0	3	32	0	32
California State University San Marcos	0	0	0	1	0	2	3	2	0	0	8	0	8
San Diego State University	0	1	0	8	3	8	9	1	0	3	33	7	40
University of California San Diego	0	0	0	0	3	1	7	0	0	1	12	0	12
State Parks and Recreation	3	0	0	0	1	1	15	2	0	11	33	0	33
TOTAL	1,510	101	2	1,590	619	1,140	833	153	49	3,433	9,430	2,786	12,216

NOTES: Misdemeanor drug law violations include glue sniffing. Other misdemeanors include: check/access cards, other theft-related offenses, annoying a child, obscene matter, lewd conduct and other sex-related crimes, contributing to the delinquency of a minor, hit-and-run and other selected traffic offenses, and other misdemeanors.

SOURCES: California Department of Justice, Criminal Justice Statistics Center; SANDAG

**Table 30
NUMBER OF JUVENILE FELONY ARRESTS BY OFFENSE TYPE AND JURISDICTION
San Diego Region, 2005**

	Homicide	Rape	Robbery	Aggravated Assault	Weapons Offenses	Burglary	Larceny	Motor Vehicle Theft	Drug Law Violations	Driving Under the Influence	Other	TOTAL
Carlsbad	0	0	4	9	13	34	10	2	6	0	24	102
Chula Vista	0	0	26	39	70	139	32	9	21	0	50	386
Coronado	0	0	0	2	0	5	1	0	1	0	1	10
El Cajon	0	0	10	37	33	44	30	21	22	0	27	224
Escondido	0	0	15	34	58	70	44	50	23	0	89	383
La Mesa	0	0	12	12	7	21	6	6	7	0	8	79
National City	0	0	15	22	13	55	10	8	15	0	5	143
Oceanside	2	0	27	38	37	61	15	18	21	1	35	255
San Diego	5	2	141	332	250	424	159	193	142	1	303	1,952
Sheriff - Total	0	6	62	210	141	286	86	63	97	0	174	1,125
Del Mar	0	0	0	1	0	1	0	0	0	0	0	2
Encinitas	0	1	3	6	14	26	7	2	15	0	11	85
Imperial Beach	0	0	4	13	6	6	0	2	2	0	6	39
Lemon Grove	0	1	1	7	5	6	1	2	1	0	4	28
Poway	0	1	0	9	5	22	9	0	9	0	10	65
San Marcos	0	0	2	12	25	31	7	7	10	0	16	110
Santee	0	0	1	31	5	32	14	2	10	0	13	108
Solana Beach	0	0	2	2	1	1	1	0	0	0	0	7
Vista	0	1	23	28	15	68	5	15	10	0	20	185
Unincorporated	0	2	26	101	65	93	42	33	40	0	94	496
San Diego Harbor Police	0	0	1	0	0	0	1	1	1	0	0	4
California Highway Patrol	0	0	0	0	0	0	1	8	0	0	2	11
California State University San Marcos	0	0	0	0	0	0	0	0	0	0	0	0
San Diego State University	0	0	0	0	3	0	0	0	0	0	0	3
University of California San Diego	0	0	0	0	0	1	0	1	0	0	0	2
State Parks and Recreation	0	0	0	0	0	0	0	1	0	0	0	1
TOTAL	7	8	313	735	625	1,140	395	381	356	2	718	4,680

NOTES: Homicide includes manslaughter (vehicular and non-vehicular). Other felony offenses include: kidnapping, forgery/checks/access cards, other theft-related offenses, arson, lewd conduct and other sex-related crimes, hit-and-run, and escape, bookmaking, and other felonies.

SOURCES: California Department of Justice, Criminal Justice Statistics Center; SANDAG

Table 31
NUMBER OF JUVENILE MISDEMEANOR AND STATUS ARRESTS BY OFFENSE TYPE AND JURISDICTION
San Diego Region, 2005

	Manslaughter/ Assault and Battery	Weapons Offenses	Misd. Burglary	Petty Theft	Vandalism	Drug Law Violations	Drunk/ Liquor Laws	Driving Under the Influence	Prostitution	Other	Total Misd.	Status	TOTAL
Carlsbad	26	2	0	88	13	47	29	5	0	54	264	10	274
Chula Vista	82	4	0	139	64	76	30	7	0	108	510	295	805
Coronado	6	0	0	8	3	11	18	2	0	23	71	3	74
El Cajon	115	9	0	168	20	99	56	5	1	134	607	94	701
Escondido	85	6	0	161	49	100	40	10	0	172	623	171	794
La Mesa	15	0	0	60	4	10	2	3	0	6	100	24	124
National City	37	2	0	100	16	26	21	0	10	22	234	40	274
Oceanside	67	6	0	205	33	127	42	8	5	43	536	218	754
San Diego	716	32	4	610	242	517	334	31	37	2,216	4,739	1,325	6,064
Sheriff - Total	431	22	0	220	129	354	188	39	0	561	1,944	448	2,392
Del Mar	0	0	0	0	0	0	0	0	0	0	0	0	0
Encinitas	22	3	0	15	3	28	27	13	0	44	155	38	193
Imperial Beach	26	0	0	2	19	36	16	2	0	54	155	22	177
Lemon Grove	12	4	0	0	9	10	8	1	0	9	53	14	67
Poway	16	0	0	42	10	23	23	4	0	33	151	18	169
San Marcos	47	2	0	44	25	25	8	2	0	73	226	40	266
Santee	53	1	0	19	8	27	16	3	0	97	224	63	287
Solana Beach	2	0	0	2	0	4	0	0	0	3	11	0	11
Vista	39	2	0	48	17	33	18	8	0	50	215	62	277
Unincorporated	214	10	0	48	38	168	72	6	0	198	754	191	945
San Diego Harbor Police	2	2	0	1	0	5	2	2	0	22	36	3	39
California Highway Patrol	0	1	0	0	0	1	0	23	0	10	35	0	35
California State University San Marcos	0	0	0	0	0	2	0	1	0	0	3	0	3
San Diego State University	0	1	0	5	1	11	10	2	0	20	50	1	51
University of California San Diego	0	1	0	4	0	3	4	0	0	0	12	2	14
State Parks and Recreation	2	0	0	0	0	3	22	0	0	23	50	0	50
TOTAL	1,584	88	4	1,769	574	1,392	798	138	53	3,414	9,814	2,634	12,448

NOTES: Misdemeanor drug law violations include glue sniffing. Other misdemeanors include: check/access cards, other theft-related offenses, annoying a child, obscene matter, lewd conduct and other sex-related crimes, contributing to the delinquency of a minor, hit-and-run and other selected traffic offenses, and other misdemeanors.

SOURCES: California Department of Justice, Criminal Justice Statistics Center; SANDAG

**Table 32
NUMBER OF JUVENILE FELONY ARRESTS BY OFFENSE TYPE AND JURISDICTION
San Diego Region, 2002**

	Homicide	Rape	Robbery	Aggravated Assault	Weapons Offenses	Burglary	Larceny	Motor Vehicle Theft	Drug Law Violations	Driving Under the Influence	Other	TOTAL
Carlsbad	0	0	6	14	9	41	8	2	8	1	24	113
Chula Vista	1	0	12	52	51	113	37	24	29	0	69	388
Coronado	0	0	0	2	0	5	1	0	4	0	0	12
El Cajon	0	0	19	40	32	46	30	6	17	0	45	235
Escondido	1	1	16	38	29	66	34	26	11	1	41	264
La Mesa	0	0	9	12	7	23	11	2	6	0	3	73
National City	0	4	13	17	17	51	12	3	7	0	18	142
Oceanside	0	0	6	47	24	76	30	9	23	0	30	245
San Diego	4	8	164	456	230	487	176	223	209	0	371	2,328
Sheriff - Total	0	9	68	224	119	286	139	48	97	2	175	1,167
Del Mar	0	0	0	0	0	0	0	0	0	0	0	0
Encinitas	0	0	0	7	4	14	5	5	11	0	7	53
Imperial Beach	0	1	6	19	5	5	7	1	4	0	8	56
Lemon Grove	0	0	3	8	9	14	5	3	1	0	5	48
Poway	0	0	2	21	2	11	8	1	6	0	14	65
San Marcos	0	0	4	9	7	23	19	1	7	1	15	86
Santee	0	0	3	16	6	19	6	1	7	1	9	68
Solana Beach	0	0	0	0	0	6	0	0	1	0	3	10
Vista	0	1	13	31	16	44	15	3	7	0	20	150
Unincorporated	0	7	37	113	70	150	74	33	53	0	94	631
San Diego Harbor Police	0	0	0	0	0	0	1	0	2	0	0	3
California Highway Patrol	0	0	0	4	0	0	2	12	3	5	3	29
California State University San Marcos	0	0	0	0	0	0	0	0	0	0	0	0
San Diego State University	0	0	0	0	0	0	0	4	0	0	0	4
University of California San Diego	0	0	0	0	0	0	0	0	0	0	0	0
State Parks and Recreation	0	0	0	1	0	0	1	0	0	0	0	2
TOTAL	6	22	313	907	518	1,194	482	359	416	9	779	5,005

NOTES: Homicide includes manslaughter (vehicular and non-vehicular). Other felony offenses include: kidnapping, forgery/checks/access cards, other theft-related offenses, arson, lewd conduct and other sex-related crimes, hit-and-run, and escape, bookmaking, and other felonies.

SOURCES: California Department of Justice, Criminal Justice Statistics Center; SANDAG

**Table 33
NUMBER OF JUVENILE MISDEMEANOR AND STATUS ARRESTS BY OFFENSE TYPE AND JURISDICTION
San Diego Region, 2002**

	Manslaughter/ Assault and Battery	Weapons Offenses	Petty Theft	Vandalism	Drug Law Violations	Drunk/ Liquor Laws	Driving Under the Influence	Prostitution	Other	Total Misd.	Status	TOTAL
Carlsbad	49	1	47	10	65	50	9	0	103	334	48	382
Chula Vista	101	3	188	53	96	37	3	0	85	566	291	857
Coronado	5	0	0	5	10	9	2	0	15	46	1	47
El Cajon	109	2	104	20	93	16	2	3	266	615	130	745
Escondido	84	1	95	85	78	65	12	0	211	631	224	855
La Mesa	36	0	38	4	26	11	2	0	23	140	54	194
National City	32	1	101	20	37	21	2	9	25	248	39	287
Oceanside	67	6	119	66	96	39	11	5	53	462	264	726
San Diego	855	15	833	331	573	383	29	32	2,207	5,258	2,002	7,260
Sheriff - Total	444	21	202	205	316	208	36	0	469	1,901	752	2,653
Del Mar	0	0	0	0	0	4	1	0	1	6	3	9
Encinitas	22	2	21	14	21	24	6	0	19	129	38	167
Imperial Beach	33	5	4	24	19	9	0	0	34	128	70	198
Lemon Grove	16	1	5	8	10	0	1	0	4	45	18	63
Poway	27	2	24	11	16	19	7	0	94	200	24	224
San Marcos	21	1	11	16	37	11	2	0	49	148	34	182
Santee	41	1	33	6	30	17	4	0	33	165	73	238
Solana Beach	0	0	1	1	2	0	3	0	5	12	5	17
Vista	55	2	12	34	18	5	4	0	28	158	64	222
Unincorporated	229	7	91	91	163	119	8	0	202	910	423	1,333
San Diego Harbor Police	2	1	2	0	7	6	0	0	29	47	34	81
California Highway Patrol	1	0	0	2	5	1	52	0	31	92	0	92
California State University San Marcos	0	0	0	0	0	0	0	0	0	0	0	0
San Diego State University	1	0	3	0	7	19	2	0	7	39	1	40
University of California San Diego	0	0	0	0	2	1	0	0	1	4	5	9
State Parks and Recreation	0	0	0	0	2	29	2	0	14	47	2	49
TOTAL	1,786	51	1,732	801	1,413	895	164	49	3,539	10,430	3,847	14,277

NOTES: Misdemeanor drug law violations include glue sniffing. Other misdemeanors include: check/access cards, other theft-related offenses, annoying a child, obscene matter, lewd conduct and other sex-related crimes, contributing to the delinquency of a minor, hit-and-run and other selected traffic offenses, and other misdemeanors.

SOURCES: California Department of Justice, Criminal Justice Statistics Center; SANDAG

Table 34
NUMBER OF JUVENILE ARRESTS BY TYPE
2002, 2005, and 2006

	2002	2005	2006	Change	
				2002-2006	2005-2006
Violent	3,034	2,647	2,775	-9%	5%
Property	3,767	3,689	3,651	-3%	-1%
Alcohol/Drug Violations	2,897	2,686	2,476	-15%	-8%
Weapons Offenses	569	713	694	22%	-3%
Status	3,847	2,634	2,786	-28%	6%
Other	5,168	4,759	5,078	-2%	7%
TOTAL	19,282	17,128	17,460	-9%	2%

NOTE: Violent includes homicide/manslaughter, rape, robbery, aggravated assault, and misdemeanor manslaughter and assault and battery; property includes grand theft, felony and misdemeanor burglary, motor vehicle theft, and petty theft; alcohol/drug includes driving-under-the-influence and drunk/liquor laws; other includes other theft-related offenses, kidnapping, arson, sex crimes, hit-and-run, violations of city and county ordinances, and other offenses; status offenses include truancy, runaway, curfew violations, incorrigible behavior, and other juvenile-specific offenses (e.g., failure to obey orders of the Juvenile Court and running away from court-ordered placement).

SOURCES: California Department of Justice, Criminal Justice Statistics Center; SANDAG

Table 35
NUMBER OF JUVENILE ARRESTS FOR VIOLENT OFFENSES
2002, 2005, and 2006

	2002	2005	2006	Change	
				2002-2006	2005-2006
Felony					
Homicide	6	7	8	--	--
Rape	22	8	16	--	--
Robbery	313	313	415	33%	33%
Aggravated Assault	907	735	826	-9%	12%
Total	1,248	1,063	1,265	1%	19%
Misdemeanor					
Manslaughter/Assault and Battery	1,786	1,584	1,510	-15%	-5%
TOTAL	3,034	2,647	2,775	-9%	5%

NOTES: Homicide includes felony manslaughter (vehicular and non-vehicular). Percent changes are not presented when either comparison number equals 30 or less.

SOURCES: California Department of Justice, Criminal Justice Statistics Center; SANDAG

Table 36
NUMBER OF JUVENILE ARRESTS FOR PROPERTY OFFENSES
2002, 2005, and 2006

	2002	2005	2006	Change	
				2002-2006	2005-2006
Felony					
Burglary	1,194	1,140	1,250	5%	10%
Larceny Theft	482	395	518	7%	31%
Motor Vehicle Theft	359	381	291	-19%	-24%
Total	2,035	1,916	2,059	1%	7%
Misdemeanor					
Petty Theft/Burglary	1,732	1,773	1,592	-8%	-10%
TOTAL	3,767	3,689	3,651	-3%	-1%

SOURCES: California Department of Justice, Criminal Justice Statistics Center; SANDAG

Table 37
NUMBER OF JUVENILE ARRESTS FOR ALCOHOL- AND DRUG-RELATED OFFENSES
2002, 2005, and 2006

	2002	2005	2006	Change	
				2002-2006	2005-2006
Felony					
Narcotics	81	64	94	16%	47%
Marijuana	178	138	129	-28%	-7%
Dangerous Drugs	152	154	124	-18%	-19%
Other Drug Offenses	5	0	0	--	--
Driving Under the Influence	9	2	3	--	--
Total	425	358	350	-18%	-2%
Misdemeanor					
Marijuana	1,153	1,109	947	-18%	-15%
Other Drug Offenses	260	283	193	-26%	-32%
Drunk	413	386	417	1%	8%
Liquor Laws	482	412	416	-14%	1%
Driving Under the Influence	164	138	153	-7%	11%
Total	2,472	2,328	2,126	-14%	-9%
TOTAL	2,897	2,686	2,476	-15%	-8%

NOTES: Narcotics include heroin, morphine, cocaine/rock, and barbiturates. Dangerous drugs include methamphetamine, depressants, and hallucinogens. Other drug offenses include illegal possession of drug paraphernalia, use of illegal prescriptions and prescription drugs, sale of chemicals used to produce drugs, under-the-influence, and other drug-related crimes. Other misdemeanor drug offenses include glue sniffing. Percent changes are not presented when either comparison number equals 30 or less.

SOURCES: California Department of Justice, Criminal Justice Statistics Center; SANDAG

Table 38
NUMBER OF JUVENILE ARRESTS FOR WEAPONS VIOLATIONS
2002, 2005, and 2006

	2002	2005	2006	Change	
				2002-2006	2005-2006
Juvenile					
Felony	518	625	593	14%	-5%
Misdemeanor	51	88	101	98%	15%
TOTAL	569	713	694	22%	-3%

SOURCES: California Department of Justice, Criminal Justice Statistics Center; SANDAG

Table 39
NUMBER OF JUVENILE ARRESTS FOR FELONY AND MISDEMEANOR
"OTHER" OFFENSES BY TYPE
2002, 2005, and 2006

	2002	2005	2006	Change	
				2002-2006	2005-2006
Felony - Other					
Sex-Related	114	86	67	-41%	-22%
Forgery/Checks	29	24	18	--	--
Arson	82	60	49	-40%	-18%
Other Felonies	554	548	843	52%	54%
Total	779	718	977	25%	36%
Misdemeanor - Other					
Other Theft/Checks/Access Cards	22	22	19	--	--
Sex-Related	39	24	27	--	--
Prostitution	49	53	49	0%	-8%
Disturb Peace/Trespass/Disorderly	778	513	481	-38%	-6%
Vandalism/Graffiti	801	574	619	-23%	8%
Hit-and-Run	43	44	28	--	--
Selected Traffic	98	55	36	-63%	-35%
City/County Ordinances	234	397	413	76%	4%
Failure to Appear/Non Traffic	47	23	26	--	--
Other Misdemeanors	2,278	2,336	2,403	5%	3%
Total	4,389	4,041	4,101	-7%	1%
TOTAL	5,168	4,759	5,078	-2%	7%

NOTES: Felony sex-related includes lewd behavior and other sex offenses; other felonies include kidnapping, arson, hit-and-run, escape, bookmaking, and other felonies. Misdemeanor sex-related includes lewd behavior, indecent exposure, annoying a child, and obscene matter; selected traffic includes driving without insurance or license, equipment violations, and others; city and county ordinances include loitering, littering, and other codes specific to cities/county; other misdemeanor arrests include contributing to the delinquency of a minor, malicious mischief, joyriding, gambling, non-traffic failure to appear, nonsupport, and other misdemeanors such as various election, building, fire, and water code violations.

SOURCES: California Department of Justice, Criminal Justice Statistics Center; SANDAG

Table 40
NUMBER OF ARRESTS FOR STATUS OFFENSES BY GENDER
2002, 2005, and 2006

	2002	2005	2006	Change	
				2002-2006	2005-2006
Truancy					
Boys	455	346	437	-4%	26%
Girls	196	148	235	20%	59%
Total	651	494	672	3%	36%
Runaway					
Boys	194	156	168	-13%	8%
Girls	396	232	245	-38%	6%
Total	590	388	413	-30%	6%
Curfew					
Boys	1,019	804	795	-22%	-1%
Girls	464	383	342	-26%	-11%
Total	1,483	1,187	1,137	-23%	-4%
Other Status					
Boys	770	387	369	-52%	-5%
Girls	353	178	195	-45%	10%
Total	1,123	565	564	-50%	<-1%
Total Status					
Boys	2,438	1,693	1,769	-27%	4%
Girls	1,409	941	1,017	-28%	8%
TOTAL	3,847	2,634	2,786	-28%	6%

NOTES: Variations in emphasis or focus on individual status offenses by law enforcement and prosecution agencies impact the number of arrests/juvenile contacts. "Other" status offenses include incorrigible behavior (such as failure to comply with parental authority), failure to obey orders of the Juvenile Court (such as community service and fines) and running away from court-ordered placement.

SOURCES: California Department of Justice, Criminal Justice Statistics Center; SANDAG

Table 41
POPULATION ESTIMATIONS, SAN DIEGO REGION
2002, 2005, and 2006

	2002	2005	2006	Change	
				2002-2006	2005-2006
BY ETHNICITY					
Adult					
White	1,255,981	1,265,627	1,269,948	1%	<1%
Black	110,226	115,407	117,518	7%	2%
Hispanic	524,279	577,406	589,712	12%	2%
Other	285,914	314,176	318,440	11%	1%
Total	2,176,400	2,272,616	2,295,618	5%	1%
Juvenile					
White	139,773	139,447	138,473	-1%	-1%
Black	21,476	22,146	22,111	3%	<-1%
Hispanic	124,934	135,007	134,740	8%	<-1%
Other	48,145	50,159	49,777	3%	-1%
Total	334,328	346,759	345,101	3%	<-1%
BY GENDER					
Adult					
Male	1,084,796	1,133,458	1,145,585	6%	1%
Female	1,091,604	1,139,158	1,150,033	5%	1%
Total	2,176,400	2,272,616	2,295,618	5%	1%
Juvenile					
Male	171,152	176,524	175,457	3%	-1%
Female	163,176	170,235	169,644	4%	<-1%
Total	334,328	346,759	345,101	3%	<-1%
BY AGE					
10-14	215,495	217,258	212,404	-1%	-2%
15-17	118,833	129,501	132,697	12%	2%
18-24	332,232	338,691	340,328	2%	<1%
25-29	226,685	227,671	222,920	-2%	-2%
30-39	463,950	459,322	458,992	-1%	<-1%
40 and Over	1,153,533	1,246,932	1,273,378	10%	2%
Total 10+	2,510,728	2,619,375	2,640,719	5%	1%

NOTE: The populations used to calculate arrest rates include individuals ten years and older (10-17 for juveniles and 18 and older for adults).

SOURCES: SANDAG, Demographic/Economic Estimates, September 2006

Table 42
POPULATION ESTIMATIONS BY JURISDICTION
San Diego Region, 2002, 2005, and 2006

	2002	2005	2006	Change	
				2002-2006	2005-2006
Carlsbad					
Adult	67,131	72,301	75,407	12%	4%
Juvenile	9,380	10,327	10,689	14%	4%
Total	76,511	82,628	86,096	13%	4%
Chula Vista					
Adult	136,907	155,232	159,978	17%	3%
Juvenile	24,762	27,343	27,563	11%	1%
Total	161,669	182,575	187,541	16%	3%
Coronado					
Adult	21,822	22,726	22,077	1%	-3%
Juvenile	1,916	1,890	1,843	-4%	-2%
Total	23,738	24,616	23,920	1%	-3%
El Cajon					
Adult	69,693	70,117	69,836	<1%	<-1%
Juvenile	11,514	11,925	11,906	3%	<-1%
Total	81,207	82,042	81,742	1%	<-1%
Escondido					
Adult	96,865	99,352	99,185	2%	<-1%
Juvenile	17,446	18,633	18,706	7%	<1%
Total	114,311	117,985	117,891	3%	<-1%
La Mesa					
Adult	44,301	44,068	43,909	-1%	<-1%
Juvenile	4,930	5,026	5,005	2%	<-1%
Total	49,231	49,094	48,914	-1%	<-1%
National City					
Adult	41,414	46,310	46,266	12%	<-1%
Juvenile	7,726	8,035	7,821	1%	-3%
Total	49,140	54,345	54,087	10%	<-1%
Oceanside					
Adult	120,545	124,169	124,185	3%	<1%
Juvenile	20,401	21,353	21,176	4%	-1%
Total	140,946	145,522	145,361	3%	<-1%
San Diego					
Adult	956,236	990,654	998,931	4%	1%
Juvenile	132,204	137,333	136,962	4%	<-1%
Total	1,088,440	1,127,987	1,135,893	4%	1%
Sheriff - Total					
Adult	592,899	622,731	655,844	11%	5%
Juvenile	102,281	103,390	103,430	1%	0%
Total	695,180	726,121	759,274	9%	5%
Del Mar					
Adult	3,878	3,891	3,899	1%	<1%
Juvenile	292	280	264	-10%	-6%
Total	4,170	4,171	4,163	<-1%	<-1%
Encinitas					
Adult	46,309	48,918	49,378	7%	1%
Juvenile	6,478	6,477	6,395	-1%	-1%
Total	52,787	55,395	55,773	6%	1%

Table 42 (continued)
POPULATION ESTIMATIONS BY JURISDICTION
San Diego Region, 2002, 2005, and 2006

	2002	2005	2006	Change	
				2002-2006	2005-2006
Imperial Beach					
Adult	19,727	20,002	20,094	2%	<1%
Juvenile	3,436	3,349	3,265	-5%	-3%
Total	23,163	23,351	23,359	1%	<1%
Lemon Grove					
Adult	18,330	18,481	18,523	1%	<1%
Juvenile	3,381	3,374	3,297	-2%	-3%
Total	21,711	21,855	21,820	1%	<1%
Poway					
Adult	35,294	37,242	37,776	7%	1%
Juvenile	7,780	7,519	7,244	-7%	-4%
Total	43,074	44,761	45,020	5%	1%
San Marcos					
Adult	43,862	52,360	55,223	26%	5%
Juvenile	7,080	8,926	9,434	33%	6%
Total	50,942	61,286	64,657	27%	6%
Santee					
Adult	39,156	40,454	41,114	5%	2%
Juvenile	7,089	6,800	6,683	-6%	-2%
Total	46,245	47,254	47,797	3%	1%
Solana Beach					
Adult	10,884	11,027	11,023	1%	<-1%
Juvenile	1,159	1,140	1,137	-2%	<-1%
Total	12,043	12,167	12,160	1%	<-1%
Vista					
Adult	65,665	67,211	67,767	3%	1%
Juvenile	11,817	11,895	11,876	1%	<-1%
Total	77,482	79,106	79,643	3%	1%
Unincorporated					
Adult	309,794	323,145	351,047	13%	9%
Juvenile	53,769	53,630	53,835	<1%	<1%
Total	363,563	376,775	404,882	11%	7%
SAN DIEGO REGION WITH CAMP PENDLETON					
Adult	2,176,400	2,272,616	2,295,618	5%	1%
Juvenile	334,328	346,759	345,101	3%	<-1%
TOTAL	2,510,728	2,619,375	2,640,719	5%	1%

NOTES: The populations in this table are used to calculate arrest rates and include individuals ten years and older (10-17 for juveniles and 18 and older for adults). Camp Pendleton population is excluded from the Sheriff's unincorporated area but included in the region total.

SOURCES: California Department of Finance July 2007; SANDAG, Demographic/Economic Estimates, September 2006