



Twenty-Five Years of Crime in the San Diego Region: 1981 through 2005

April 2006

Criminal Justice Research Division



401 B Street
Suite 800
San Diego, CA 92101
(619) 699-1900

BOARD OF DIRECTORS



The 18 cities and county government are SANDAG serving as the forum for regional decision-making. SANDAG builds consensus; plans, engineers, and builds public transit; makes strategic plans; obtains and allocates resources; and provides information on a broad range of topics pertinent to the region's quality of life.

CHAIR: Hon. Mickey Cafagna
FIRST VICE CHAIR: Hon. Mary Teresa Sessom
SECOND VICE CHAIR: Hon. Lori Holt Pfeiler
EXECUTIVE DIRECTOR: Gary L. Gallegos

CITY OF CARLSBAD

Hon. Matt Hall, Mayor Pro Tem
(A) Hon. Bud Lewis, Mayor
(A) Hon. Ann Kulchin, Councilmember

CITY OF CHULA VISTA

Hon. Steve Padilla, Mayor
(A) Hon. Jerry Rindone, Councilmember
(A) Hon. John McCann, Deputy Mayor

CITY OF CORONADO

Hon. Phil Monroe, Councilmember
(A) Hon. Frank Tierney, Councilmember
(A) Hon. Carrie Downey, Councilmember

CITY OF DEL MAR

Hon. Crystal Crawford, Mayor
(A) Hon. David Druker, Councilmember
(A) Hon. Henry Abarbanel, Councilmember

CITY OF EL CAJON

Hon. Mark Lewis, Mayor
(A) Hon. Jillian Hanson-Cox, Mayor Pro Tem

CITY OF ENCINITAS

Hon. Christy Guerin, Mayor
(A) Hon. Jerome Stocks, Councilmember

CITY OF ESCONDIDO

Hon. Lori Holt Pfeiler, Mayor
(A) Hon. Ed Gallo, Mayor Pro Tem
(A) Hon. Ron Newman, Councilmember

CITY OF IMPERIAL BEACH

Hon. Patricia McCoy, Councilmember
(A) Hon. Diane Rose, Mayor
(A) Hon. Mayda Winter, Councilmember

CITY OF LA MESA

Hon. Art Madrid, Mayor
(A) Hon. Barry Jantz, Councilmember
(A) Hon. David Allan, Vice Mayor

CITY OF LEMON GROVE

Hon. Mary Teresa Sessom, Mayor
(A) Hon. Jerry Jones, Councilmember
(A) Hon. Jerry Selby, Councilmember

CITY OF NATIONAL CITY

Hon. Ron Morrison, Vice Mayor
(A) Hon. Frank Parra, Councilmember
(A) Hon. Louie Natividad, Councilmember

CITY OF OCEANSIDE

Hon. Shari Mackin, Deputy Mayor
(A) Hon. Esther Sanchez, Councilmember
(A) Hon. Jim Wood, Mayor

CITY OF POWAY

Hon. Mickey Cafagna, Mayor
(A) Hon. Robert Emery, Councilmember
(A) Hon. Don Higginson, Councilmember

CITY OF SAN DIEGO

Hon. Jerry Sanders, Mayor
Hon. Jim Madaffer, Councilmember
(A) Hon. Scott Peters, Council President

CITY OF SAN MARCOS

Hon. Pia Harris-Ebert, Vice Mayor
(A) Hon. Hal Martin, Councilmember
(A) Hon. Corky Smith, Mayor

CITY OF SANTEE

Hon. Jack Dale, Councilmember
(A) Hon. Hal Ryan, Councilmember
(A) Hon. Randy Voepel, Mayor

CITY OF SOLANA BEACH

Hon. Joe Kellejian, Councilmember
(A) Hon. Lesa Heebner, Deputy Mayor
(A) Hon. David Powell, Mayor

CITY OF VISTA

Hon. Judy Ritter, Mayor Pro Tem
(A) Hon. Bob Campbell, Councilmember
(A) Hon. Steve Gronke, Councilmember

COUNTY OF SAN DIEGO

Hon. Bill Horn, Chairman
(A) Hon. Ron Roberts, Vice Chairman

IMPERIAL COUNTY

(Advisory Member)
Hon. Victor Carrillo, Chairman
(A) Hon. David Ouzan, Councilmember

CALIFORNIA DEPARTMENT OF TRANSPORTATION

(Advisory Member)
Will Kempton, Director
(A) Pedro Orso-Delgado, District 11 Director

METROPOLITAN TRANSIT SYSTEM

(Advisory Member)
Harry Mathis, Chairman
(A) Hon. Jerry Rindone, Vice Chairman
(A) Hon. Bob Emery, Board Member

NORTH COUNTY TRANSIT DISTRICT

(Advisory Member)
Hon. Jerome Stocks, Chairman
(A) Hon. Lesa Heebner, Planning Committee Chair
(A) Hon. Norine Sigafoose, Monitoring Committee Chair

U.S. DEPARTMENT OF DEFENSE

(Advisory Member)
CAPT Daniel King, USN, CEC
Commanding Officer, Southwest Division
Naval Facilities Engineering Command
(A) CAPT Michael Giorgione, USN, CEC
Executive Officer, Southwest Division
Naval Facilities Engineering Command

SAN DIEGO UNIFIED PORT DISTRICT

(Advisory Member)
William Hall, Commissioner
(A) Michael Bixler, Commissioner

SAN DIEGO COUNTY WATER AUTHORITY

(Advisory Member)
Marilyn Dailey, Commissioner
(A) Mark Muir, Commissioner

MEXICO

(Advisory Member)
Hon. Luis Cabrera C.
Consulate General of Mexico

As of March 16, 2006

TWENTY-FIVE YEARS OF CRIME IN THE SAN DIEGO REGION: 1981 THROUGH 2005

INTRODUCTION

Since 1980, SANDAG has been reporting regional crime statistics for the San Diego region through a cooperative agreement with local law enforcement agencies. For the first time, this report presents and discusses crime trend data for the past 25 years. Crime rates per 1,000 resident population¹, as well as the actual number of crimes reported, are presented. SANDAG is the only local entity to compile these statistics across the 18 incorporated cities, as well as the unincorporated areas of the county, making this information some of the most frequently requested from SANDAG's Criminal Justice Clearinghouse. These data are useful to local law enforcement agencies as they track the effectiveness of their prevention and response efforts on regional crime rates.

OVERALL CRIME

There was a total of 111,188 Part I (or FBI Index) crimes in the San Diego region in 2005 (Appendix Tables 1 and 5), which equated to 36.4 crimes per 1,000 population (Appendix Table 2). Part I crimes include four violent offenses (homicide, rape, robbery, and aggravated assault) and three property offenses (burglary, larceny, and motor vehicle theft) that are tracked nationwide in a standardized manner by the FBI, with agencies submitting crime data through the Uniform Crime Reporting (UCR) system.

FAST FACTS

- One in 221 San Diego County residents was the victim of a violent crime in 2005. One in 31 was the victim of a property crime.
- Over the past 25 years, the number of property crimes in the San Diego region peaked in the late 1980s, while the number of violent crimes peaked slightly later, in the early 1990s.
- The 2005 violent crime rate of 4.5 was the lowest in the past 25 years. The property crime rate was at its 25-year low in 2000.
- The number of homicides in the region decreased 23 percent from 2004. This one-year decrease represented the greatest change, compared to all other crimes.
- Aggravated assault was the only violent crime that had a larger number of incidents in 2005, compared to 1981, which is related at least in part to legislation pertaining to domestic violence reporting requirements.
- One larceny or theft was reported every ten minutes to local law enforcement in the San Diego region in 2005.
- Motor vehicle theft was the only crime to increase for a fifth year in a row.

¹ The populations used to calculate rates are provided in Appendix Table 20.

VIOLENT CRIME

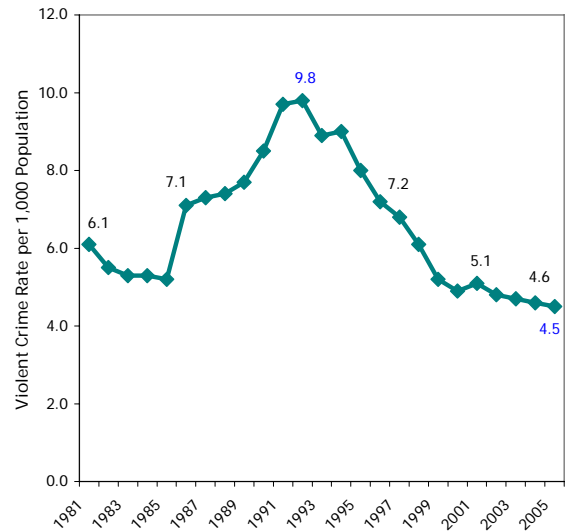
Over the past 25 years, the violent crime rate in the San Diego region declined during the first half of the 1980s and began to increase in 1986 (from 5.2 in 1985), reaching a peak of 9.8 in 1992 (Figure 1²). In 2005, there were 13,835 Part I violent crimes reported to law enforcement in the region (Appendix Tables 1 and 6)³. This equated to 4.5 violent crimes per 1,000 residents and represented a two percent decrease from 2004 (when the rate was 4.6) (Appendix Table 3). In fact, the 2005 violent crime rate was the lowest in the last 25 years. The most common type of reported violent crime was aggravated assault, which represented almost two-thirds (65%) of all violent crime in 2005 (robbery represented 28%, rape 6%, and homicide 1%) (not shown). A number of theories have been provided regarding possible factors related to this overall drop in crime, including declining numbers of young males in high crime-associated age groups, legislation which increased jail and prison time for violent offenses, economic factors, and the implementation of effective crime prevention programs.

Each jurisdiction also documents violent crime committed against senior citizens. In 2005, there were 485 violent crimes against senior citizens, an increase of 5 percent from the previous year. These crimes included 4 homicides, 12 rapes, 211 robberies, and 258 aggravated assaults (not shown).

² The crime rate/number of crimes in the current year, and 1, 5, 10, 20, and 25 years ago, are presented, as well as the highest and lowest rate/number over the past 25 years.

³ The numbers of violent crimes reported in each jurisdiction for 2001 through 2005 also are presented in Appendix Tables 10 through 14.

Figure 1
VIOLENT CRIME RATE LOWEST
IN 25 YEARS



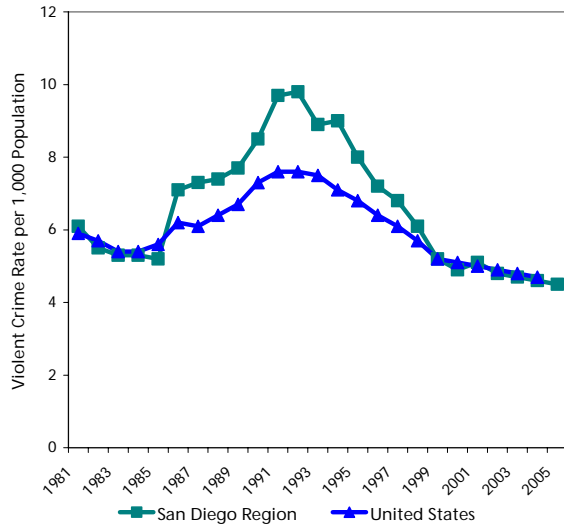
SOURCES: SANDAG; California Department of Finance; U.S. Census 1990; U.S. Census 2000

Across jurisdictions, the 2005 violent crime rate per 1,000 population ranged from 0.8 in Coronado to 7.2 in National City (Appendix Table 3 and Appendix Map 1). Over the past year, 10 jurisdictions had higher and 14 had lower 2005 violent crime rates, compared to 2004 (and one had no change). Recent efforts by individual departments to address violent crime in their communities have included strategies targeting gangs and prevention efforts for youth.

Statistics from the Sourcebook of Criminal Justice Statistics (available online at www.albany.edu/sourcebook) were used to compare changes over time in the violent crime rate reported in the San Diego region to those reported across the United States⁴. As Figure 2 shows, the San Diego region experienced higher violent crime rates in the late 1980s and early 1990s, compared to the nation, returning to a similar violent crime rate after 1999.

⁴ National statistics currently are available only through 2004.

Figure 2
SAN DIEGO REGION EXPERIENCED HIGHER VIOLENT CRIME RATES THAN THE NATION DURING LATE 1980s AND EARLY 1990s



SOURCES: SANDAG; Sourcebook of Criminal Justice Statistics

Homicide

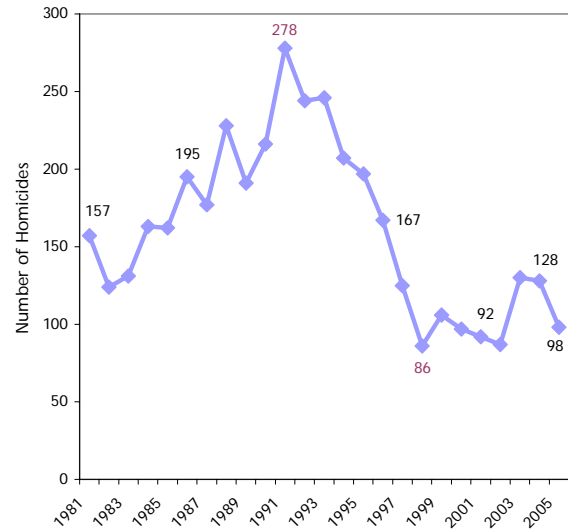
Over the past 25 years, the greatest number of homicides in the San Diego region occurred in 1991 (when there were 278) and the fewest occurred in 1998 (when there were 86) (Figure 3 and Appendix Table 8). Between 1998 and 2002, the number of homicides ranged from 86 to 106, but jumped to 130 and 128 in 2003 and 2004, respectively. In 2005, there were 98 homicides, a 23 percent decrease from 2004 (Appendix Table 1). This was the third largest one-year decrease during this 25-year period (following 25% decrease from 1996 to 1997, and 31% decrease from 1997 to 1998).

Rape

There were 807 rapes reported in the San Diego region in 2005, which was a one percent increase from 2004 (when there were 797) (Appendix Table 1). As Figure 4 and Appendix Table 8 show, the number of rapes reported to law enforcement has remained

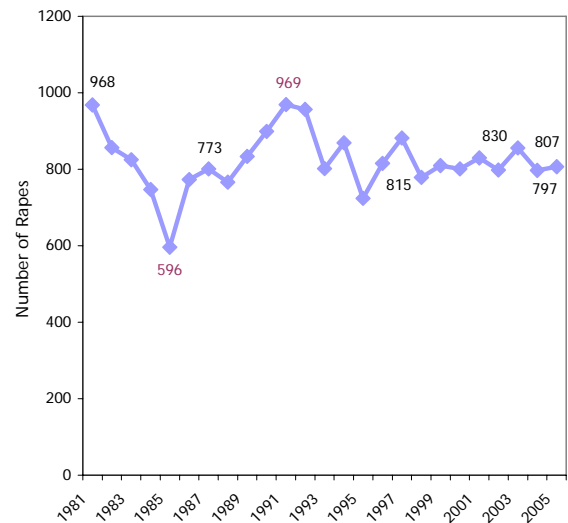
relatively stable over the past 25 years, compared to the number of homicides during the same period of time. The greatest number of rapes reported to law enforcement was 969 in 1991, and the lowest was 596 in 1985. In 2005, 76 percent of the rapes reported to law enforcement were completed and 24 percent were attempted (not shown).

Figure 3
NUMBER OF HOMICIDES IN 2005 DOWN FROM 2003 AND 2004



SOURCE: SANDAG

Figure 4
LESS VARIABILITY IN NUMBER OF RAPES COMPARED TO OTHER VIOLENT CRIMES

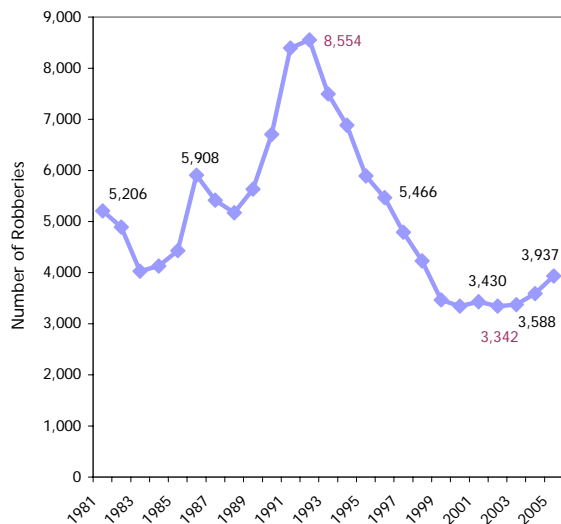


SOURCE: SANDAG

Robbery

There were 3,937 robberies in 2005, compared to 3,588 in 2004 (Appendix Table 1). This change of 10 percent in 2005 represented the largest one-year increase among the four violent crime types. Over the past 25 years, the number of robberies has shown three declining trends, with the most recent beginning in 1993 (after the greatest number, 8,554, was reported in 1992) and continuing through 2000 (to 3,347) (Figure 5 and Appendix Table 8). Since 2000, the number of robberies has decreased in one of the five years. In 2005, 24 percent of robberies involved a firearm, 11 percent a knife or other cutting instrument, 10 percent another weapon, and 55 percent were considered strong-arm. Just over one-half (51%) occurred out in the open, on streets, or in other public places (not shown).

**Figure 5
NUMBER OF ROBBERIES INCREASED
FOR THIRD YEAR IN A ROW**

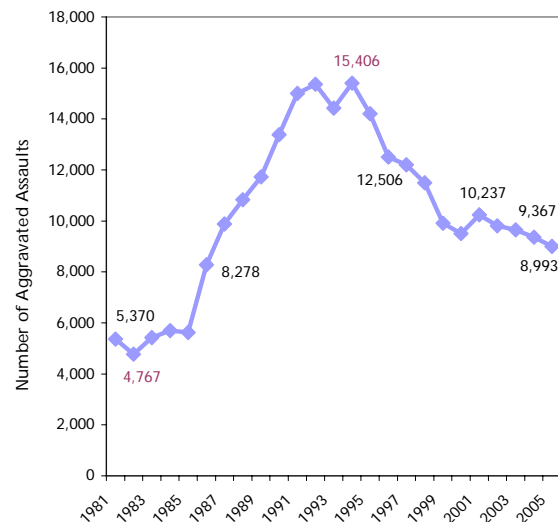


SOURCE: SANDAG

Aggravated Assault

One in 339 individuals in the San Diego region was the victim of an aggravated assault in 2005 (not shown). As Figure 6 and Appendix Table 1 show, there were fewer assaults reported in the region in 2005, compared to one (4% less) and five years (12% less) earlier. Over the past 25 years, the number of aggravated assaults followed an upward trend from 1982 (4,767) through 1994 (15,406) (Appendix Table 8). Since then, there has been an overall decline to 8,993 in 2005, but it should be noted that this figure is 67 percent higher than it was in 1981 (when there were 5,370 assaults reported to local law enforcement). This increase is due, at least in part, to 1986 legislation requiring agencies to report all domestic violence incidents.

**Figure 6
NUMBER OF AGGRAVATED ASSAULTS
CONTINUES TO DECLINE**



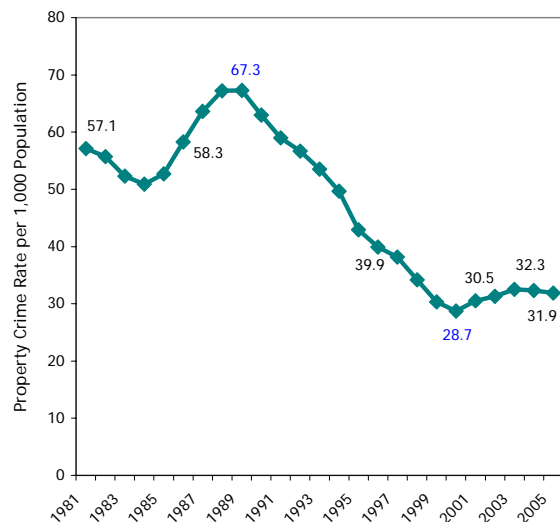
SOURCE: SANDAG

In 2005, there were almost three simple assaults for every aggravated assault that was reported (for a total of 23,491 simple assaults), which are not included in these Part I statistics. Simple assaults include all assaults and attempted assaults which are not of an aggravated nature and do not result in serious injury to the victim (not shown).

PROPERTY CRIME

With 97,353 property crimes reported (Appendix Tables 1 and 7), one in every 31 residents was the victim of a property crime in 2005 (not shown). In contrast to the 2005 violent crime rate, which was at its lowest point in 25 years, the property crime rate was at its lowest point in 2000 (28.7 per 1,000 population) (Figure 7). In 2005, the property crime rate of 31.9 was 11 percent higher than this 25-year low, but was still 44 percent lower than it was in 1981. Over one-half (55%) of all property crimes in 2005 were larcenies, 26 percent were motor vehicle thefts, and 18 percent were burglaries (not shown).

Figure 7
PROPERTY CRIME RATE DECREASES SLIGHTLY AFTER RECENT INCREASES



SOURCES: SANDAG; California Department of Finance; U.S. Census 1990; U.S. Census 2000

Across the jurisdictions, 12 jurisdictions had a higher property crime rate in 2005 than 2004, 12 had a lower rate, and one had no change. These 2005 rates ranged from 13.1 (in Ramona) to 58.6 (in Del Mar) per 1,000 (Appendix Table 4 and Appendix Map 2)⁵. When interpreting these statistics, it is important to note that a variety of factors can affect a jurisdiction's crime rate, such as daytime populations and accessibility.

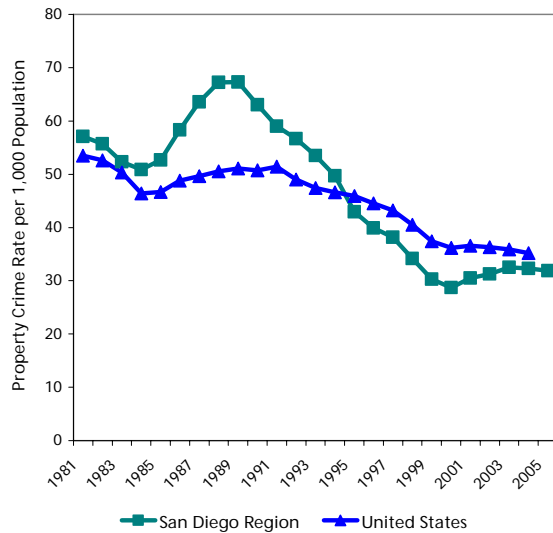
In terms of dollar value, over \$269 million worth of property was stolen in the San Diego region in 2005, compared to approximately \$250 million⁶ in 2004 (Appendix Table 17). Forty-two percent (42%) of this property, which was valued at over \$112 million, was recovered in 2005 (which was down slightly from 44% in 2004) (Appendix Tables 18 and 19).

Figure 8 presents property crimes reported to law enforcement in the San Diego region from 1981 through 2005 compared to national statistics from 1981 through 2004 (the most recent available, as previously noted). In the early 1980s, the San Diego region had a similar property crime rate to the nation, but experienced a greater increase than the U.S., beginning in 1984. However, the local property crime rate began to decline in the mid 1990s, and has remained lower than the national rate since then.

⁵ The numbers of property crimes reported in each jurisdiction for 2001 through 2005 also are presented in Appendix Tables 10 through 14.

⁶ The amount of property stolen in 2004 equals \$259 million when adjusted for inflation to 2005 dollars.

Figure 8
SAN DIEGO REGION HAS HAD
A LOWER PROPERTY CRIME RATE
THAN THE NATION SINCE 1995

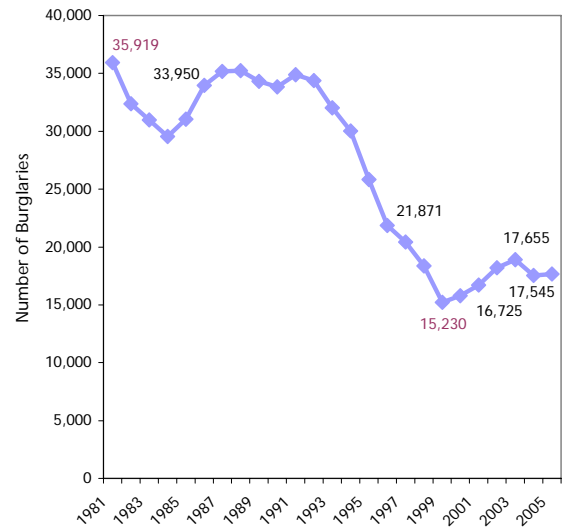


SOURCES: SANDAG; Sourcebook of Criminal Justice Statistics

Burglary

Over the past 25 years, the number of burglaries was greatest in 1981 (35,919). After a three-year dip to 1984, a rise led to relatively high levels of burglaries through the early 1990s, after which a decline resulted in a low (15,230) in 1999 (Figure 8 and Appendix Table 8). Since then, the number has varied between 15,777 (in 2000) to 18,893 (in 2003). There were 17,655 burglaries in the San Diego region in 2005, with slightly over one-half (56%) representing household burglaries, which equates to one in every 107 households being burglarized. In 2005, 30 percent of all burglaries involved a forced entry, with the rest described as no forced entry (51%) or unsuccessful (19%) (not shown).

Figure 9
NUMBER OF BURGLARIES INCREASED
SLIGHTLY FROM 2004

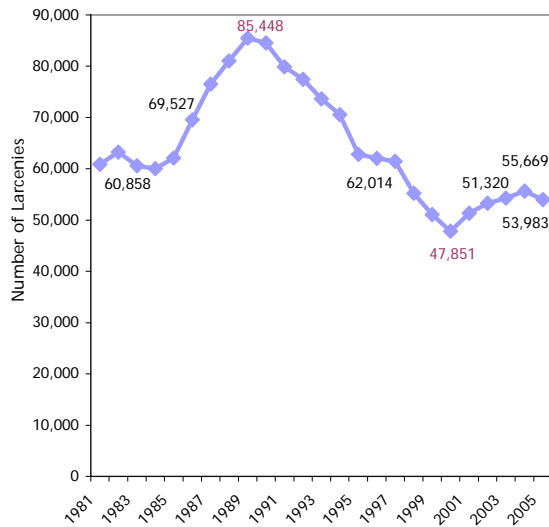


SOURCE: SANDAG

Larceny

Larceny, or theft, is the most common crime, with one reported to law enforcement about every ten minutes in 2005 (not shown). Beginning in 1984, the number of larcenies reported in the San Diego region began an upward trend, peaking at 85,448 in 1989, and then decreasing to a low of 47,851 in 2000 (Figure 10 and Appendix Table 8). Since then, there have been four years of increases, with 2005 representing the first decrease since 1999-2000 (3% from 55,669 in 2004 to 53,983 in 2005). The most common larceny type in 2005 was theft from inside motor vehicles (47%), with the second most common from buildings (18%) (not shown).

Figure 10
LARCENIES DECREASED FOR FIRST
TIME IN PAST SEVERAL YEARS

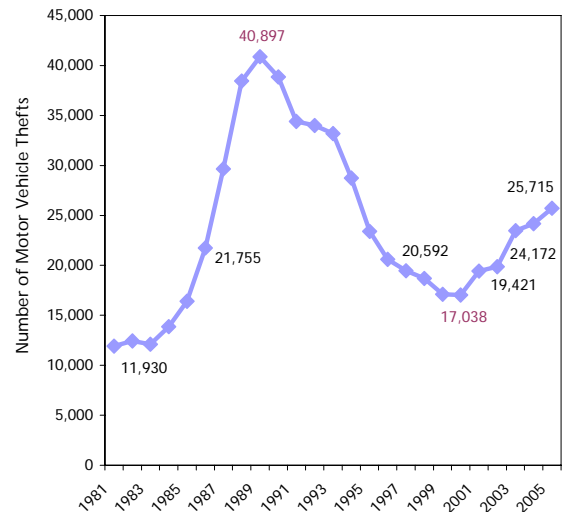


SOURCE: SANDAG

Motor Vehicle Theft

Beginning in 1983, the number of motor vehicles stolen in the San Diego region began to increase, reaching a high in 1989 of 40,897 (Figure 11 and Appendix Table 8). This upward trend was followed by an overall decrease to a low of 17,038 in 2000. Since then, the number has increased for five consecutive years, to 25,715 stolen vehicles in 2005. This equates to one in every 87 registered motor vehicles being stolen in the San Diego region in 2005. In terms of dollar amount, the value of these stolen vehicles was estimated at over \$159 million and represented over one-half (59%) of the value of total property stolen (not shown).

Figure 11
VEHICLE THEFT HAS INCREASED
MORE THAN OTHER PROPERTY
CRIMES SINCE 2000



SOURCE: SANDAG

Arson

Unlike other FBI Index offenses, when arson is committed in concert with another FBI Index offense, both incidents must be reported, which is why arson is presented separately from other property crime statistics. There were 555 arsons reported in 2005, which was higher than in 2004 (when there were 525). Forty-five percent (45%) of arsons in 2005 were of structures and 55 percent were categorized as mobile and other property types (not shown).

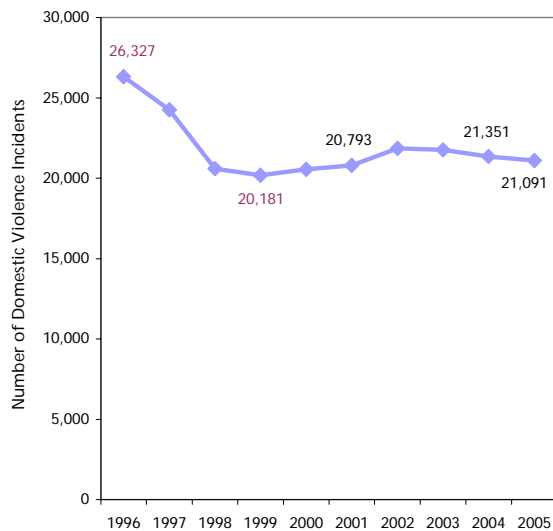
DOMESTIC VIOLENCE

Law enforcement agencies also track domestic violence incidents, some of which are included in the previously-reported numbers in this bulletin. For example, a domestic violence incident could include a Part I violent crime (e.g., aggravated assault) or some type of property crime (e.g., burglary

or vandalism). Over the past ten years⁷, the number of domestic violence incidents has varied from a high of 26,237 in 1996 to a low of 20,181 in 1999 (Figure 12). There were 21,091 domestic violence incidents reported to law enforcement in 2005, which represented a decrease of one percent from the previous year and was the third consecutive year to show a decrease.

Across the 19 jurisdictions (statistics are not available for the unincorporated area separately), 12 localities reported one-year decreases in the number of domestic violence incidents (ranging from 1% to 26%), 6 reported increases (ranging from 3% to 10%), and one had a small number of incidents across the years, limiting the types of valid comparisons that could be made (Appendix Table 9).

Figure 12
DOMESTIC VIOLENCE DOWN FOR
THIRD CONSECUTIVE YEAR

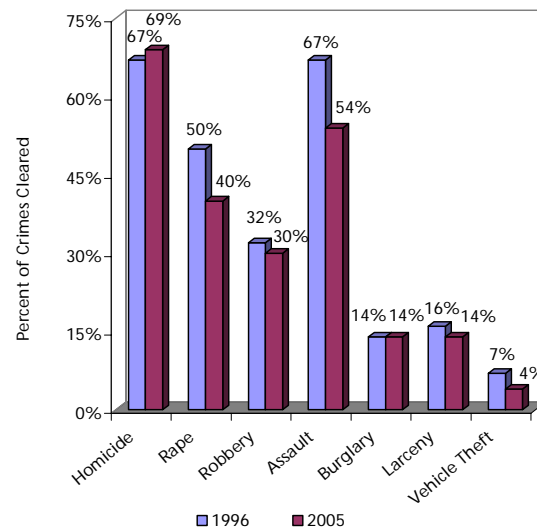


SOURCE: SANDAG

CLEARANCE RATES

A crime is cleared or solved for crime-reporting purposes when at least one person is arrested and charged with the offense. Not surprisingly, the clearance rates in 2005 varied by crime type, with violent crimes cleared more frequently than property crimes. Overall, 46 percent of violent crimes that were open for investigation in the region were cleared (with a range across localities of 29% to 84%), compared to 11 percent of property crimes (with a range of 2% to 21%) (Appendix Tables 15 and 16). As Figure 13 shows, compared to ten years earlier, a smaller proportion of crimes were solved, with the exception of homicide and burglary in 2005.

Figure 13
MORE THAN TWO-THIRDS OF HOMICIDES
WERE CLEARED IN 2005



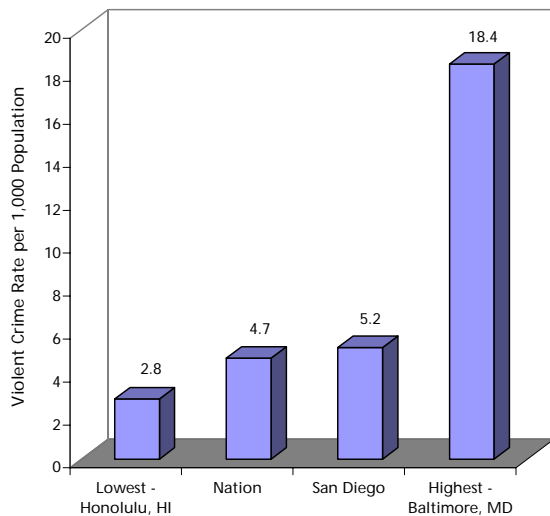
SOURCE: SANDAG

⁷ Due to changing legislation and mandates, only ten years of trend data are compared for statistical purposes.

HOW DOES SAN DIEGO COMPARE TO OTHER U.S. CITIES?

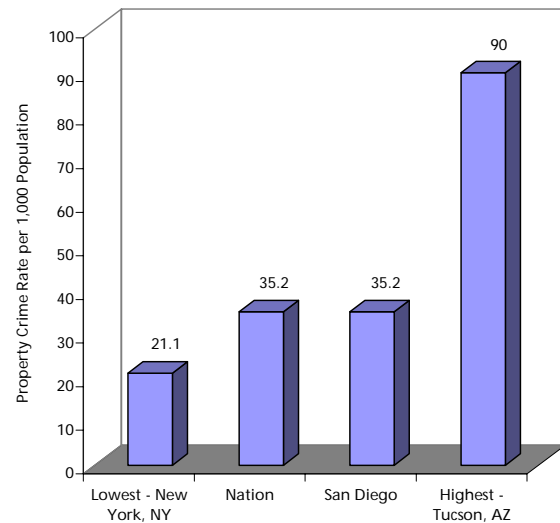
National information for crime rates for 31 U.S. cities (rather than counties or regions) with populations of 500,000 or more recently was released for calendar year 2004 (one year prior to the other statistics presented in this report). In 2004, the City of San Diego was the seventh largest city in the U.S., with a population of almost 1.3 million. As Figures 14 and 15 show, the City of San Diego was one of the safest places to live, compared to other large metropolitan areas in terms of both violent (third lowest, following Honolulu, HI; and San Jose, CA) and property crime (fifth lowest, following New York, NY; San Jose, CA; Los Angeles, CA; and El Paso, TX). In 2003, San Diego was ranked third safest in terms of violent crime rates and fourth safest in terms of property crime rates.

Figure 14
CITY OF SAN DIEGO HAD FOURTH LOWEST VIOLENT CRIME RATE IN 2004



SOURCES: SANDAG; U.S. Department of Justice

Figure 15
CITY OF SAN DIEGO HAD FIFTH LOWEST PROPERTY CRIME RATE IN 2004



SOURCES: SANDAG; U.S. Department of Justice

SUMMARY

Compared to 25 years earlier, the San Diego region is a safer place to live in terms of both violent and property crime. Ninety-eight homicides occurred in the San Diego region in 2005, which was a 23 percent decrease from 2004. In comparison, the number of both robberies and motor vehicle thefts increased (10% and 6%, respectively) from the previous year. Residents were most likely to be a victim of a larceny in 2005, with one theft reported every 10 minutes to local law enforcement agencies.

For those interested in more detailed 2005 crime statistics, please contact Donna Allnutt at (619) 699-6912 and, if interested in more recent statistics for a specific area of San Diego County, as well as maps of those areas, please visit the ARJIS (Automated Regional Justice Information System) Web site at www.arjis.org.

APPENDIX

**Appendix Table 1
NUMBER OF CRIMES BY OFFENSE
San Diego Region, 2001, 2004, and 2005**

	2001	2004	2005	Change	
				2001-2005	2004-2005
Homicide	92	128	98	7%	-23%
Rape	830	797	807	-3%	1%
Robbery	3,430	3,588	3,937	15%	10%
Aggravated Assault	10,237	9,367	8,993	-12%	-4%
Violent Crime Total	14,589	13,880	13,835	-5%	<-1%
Burglary	16,725	17,545	17,655	6%	1%
Larceny Theft	51,320	55,669	53,983	5%	-3%
Motor Vehicle Theft	19,421	24,172	25,715	32%	6%
Property Crime Total	87,466	97,386	97,353	11%	<-1%
FBI INDEX	102,055	111,266	111,188	9%	<-1%

SOURCE: SANDAG

**Appendix Table 2
FBI INDEX CRIME RATE PER 1,000 POPULATION BY JURISDICTION
San Diego Region, 2001, 2004, and 2005**

	2001	2004	2005	Change	
				2001-2005	2004-2005
Carlsbad	24.8	26.2	28.0	13%	7%
Chula Vista	42.1	38.6	38.7	-8%	<1%
Coronado	17.4	26.5	20.4	17%	-23%
El Cajon	43.4	49.3	46.7	8%	-5%
Escondido	38.3	45.2	39.6	3%	-12%
La Mesa	40.2	43.2	43.4	8%	<1%
National City	47.1	54.2	49.9	6%	-8%
Oceanside	35.8	41.3	37.9	6%	-8%
San Diego	40.6	40.4	40.4	<-1%	0%
Sheriff - Total	24.7	26.5	26.7	8%	1%
Del Mar	58.6	46.2	60.8	4%	32%
Encinitas	25.0	22.5	22.4	-10%	<-1%
Imperial Beach	36.2	39.2	33.3	-8%	-15%
Lemon Grove	35.2	42.5	37.6	7%	-12%
Poway	21.0	18.3	18.0	-14%	-2%
San Marcos	26.4	26.0	25.6	-3%	-2%
Santee	27.3	25.9	27.1	-1%	5%
Solana Beach	25.5	27.6	25.1	-2%	-9%
Vista	28.0	35.8	37.2	33%	4%
Unincorporated	22.0	24.2	24.8	13%	2%
Alpine	24.3	25.2	25.8	6%	2%
Fallbrook	22.7	25.7	30.9	36%	20%
Lakeside	20.9	27.0	29.5	41%	9%
Ramona	17.4	15.2	15.8	-9%	4%
Spring Valley	26.1	29.0	28.7	10%	-1%
Valley Center	20.6	25.8	26.3	28%	2%
Other Unincorporated	21.2	22.6	21.4	1%	-5%
TOTAL	35.6	36.9	36.4	2%	-1%

NOTES: FBI Index crimes include homicide, rape, robbery, aggravated assault, burglary, larceny, and motor vehicle theft. Percent changes for crime rates are based upon computations rounded to one decimal place and may vary from changes computed using more detailed rounding conventions. Populations used to compute crime rates reflect the most current Department of Finance estimates.

SOURCES: California Department of Finance; SANDAG

Appendix Table 3
VIOLENT CRIME RATE PER 1,000 POPULATION BY JURISDICTION
San Diego Region, 2001, 2004, and 2005

	2001	2004	2005	Change	
				2001-2005	2004-2005
Carlsbad	2.4	2.9	2.7	13%	-7%
Chula Vista	5.1	4.0	4.3	-16%	8%
Coronado	1.2	1.6	0.8	--	--
El Cajon	6.5	5.6	5.3	-18%	-5%
Escondido	4.2	4.8	4.9	17%	2%
La Mesa	3.7	3.6	3.6	-3%	0%
National City	8.5	7.0	7.2	-15%	3%
Oceanside	6.5	5.9	5.6	-14%	-5%
San Diego	6.0	5.2	5.1	-15%	-2%
Sheriff – Total	3.8	3.6	3.7	-3%	3%
Del Mar	8.1	2.9	2.2	--	--
Encinitas	2.6	2.4	2.7	4%	13%
Imperial Beach	6.1	6.9	4.8	-21%	-30%
Lemon Grove	5.2	6.7	6.1	17%	-9%
Poway	2.2	1.5	1.9	-14%	27%
San Marcos	4.1	3.7	3.2	-22%	-14%
Santee	4.2	3.1	3.0	-29%	-3%
Solana Beach	2.6	2.7	1.8	--	--
Vista	4.6	5.0	5.6	22%	12%
Unincorporated	3.6	3.5	3.7	3%	6%
Alpine	3.4	3.4	2.7	-21%	-21%
Fallbrook	3.5	2.2	3.5	0%	59%
Lakeside	3.9	2.9	4.1	5%	41%
Ramona	2.5	2.2	2.7	8%	23%
Spring Valley	4.1	5.5	4.6	12%	-16%
Valley Center	4.6	4.1	3.6	-22%	-12%
Other Unincorporated	3.5	3.4	3.5	0%	3%
TOTAL	5.1	4.6	4.5	-12%	-2%

NOTES: FBI Index violent crimes include homicide, rape, robbery, and aggravated assault. Percent changes for crime rates are based upon computations rounded to one decimal place and may vary from changes computed using more detailed rounding conventions. Populations used to compute crime rates reflect the most current Department of Finance estimates. Percent changes are not presented for crime rates based upon offense numbers equaling 30 or less.

SOURCES: California Department of Finance; SANDAG

Appendix Table 4
PROPERTY CRIME RATE PER 1,000 POPULATION BY JURISDICTION
San Diego Region, 2001, 2004, and 2005

	2001	2004	2005	Change	
				2001-2005	2004-2005
Carlsbad	22.4	23.3	25.3	13%	9%
Chula Vista	37.0	34.6	34.4	-7%	-1%
Coronado	16.2	24.9	19.5	20%	-22%
El Cajon	36.9	43.7	41.4	12%	-5%
Escondido	34.0	40.4	34.7	2%	-14%
La Mesa	36.5	39.6	39.8	9%	1%
National City	38.5	47.2	42.7	11%	-10%
Oceanside	29.3	35.4	32.3	10%	-9%
San Diego	34.7	35.2	35.4	2%	1%
Sheriff - Total	20.9	22.9	23.0	10%	<1%
Del Mar	50.5	43.4	58.6	16%	35%
Encinitas	22.4	20.0	19.7	-12%	-2%
Imperial Beach	30.1	32.3	28.5	-5%	-12%
Lemon Grove	30.0	35.8	31.5	5%	-12%
Poway	18.8	16.8	16.1	-14%	-4%
San Marcos	22.3	22.2	22.3	0%	<1%
Santee	23.0	22.9	24.2	5%	6%
Solana Beach	22.9	24.9	23.3	2%	-6%
Vista	23.4	30.9	31.6	35%	2%
Unincorporated	18.4	20.8	21.1	15%	1%
Alpine	21.0	21.8	23.2	10%	6%
Fallbrook	19.1	23.5	27.5	44%	17%
Lakeside	17.0	24.1	25.4	49%	5%
Ramona	14.8	13.1	13.1	-11%	0%
Spring Valley	22.0	23.5	24.1	10%	3%
Valley Center	16.0	21.6	22.7	42%	5%
Other Unincorporated	17.6	19.1	17.9	2%	-6%
TOTAL	30.5	32.3	31.9	5%	-1%

NOTES: FBI Index property crimes include burglary, larceny, and motor vehicle theft. Percent changes for crime rates are based upon computations rounded to one decimal place and may vary from changes computed using more detailed rounding conventions. Populations used to compute crime rates reflect the most current Department of Finance estimates.

SOURCES: California Department of Finance; SANDAG

**Appendix Table 5
NUMBER OF FBI INDEX CRIMES BY JURISDICTION
San Diego Region, 2001, 2004, and 2005**

	2001	2004	2005	Change	
				2001-2005	2004-2005
Carlsbad	2,061	2,433	2,668	29%	10%
Chula Vista	7,644	8,052	8,416	10%	5%
Coronado	417	699	549	32%	-21%
El Cajon	4,171	4,804	4,561	9%	-5%
Escondido	5,194	6,331	5,603	8%	-11%
La Mesa	2,223	2,412	2,430	9%	1%
National City	2,632	3,255	3,182	21%	-2%
Oceanside	5,887	7,138	6,640	13%	-7%
San Diego	50,444	52,217	52,816	5%	1%
Sheriff - Total	19,598	22,076	22,425	14%	2%
Del Mar	261	210	276	6%	31%
Encinitas	1,476	1,401	1,405	-5%	<1%
Imperial Beach	989	1,085	922	-7%	-15%
Lemon Grove	887	1,084	961	8%	-11%
Poway	1,027	924	910	-11%	-2%
San Marcos	1,525	1,745	1,867	22%	7%
Santee	1,459	1,397	1,479	1%	6%
Solana Beach	337	370	336	<-1%	-9%
Vista	2,552	3,361	3,501	37%	4%
Unincorporated	9,085	10,499	10,768	19%	3%
Alpine	657	704	724	10%	3%
Fallbrook	1,056	1,294	1,575	49%	22%
Lakeside	1,086	1,417	1,547	42%	9%
Ramona	575	536	560	-3%	4%
Spring Valley	1,800	2,046	2,018	12%	-1%
Valley Center	429	548	578	35%	5%
Other Unincorporated	3,482	3,954	3,766	8%	-5%
California Highway Patrol	170	127	159	-6%	25%
California State University San Marcos	19	52	65	--	25%
San Diego State University	718	589	395	--	--
University of California San Diego	449	648	760	69%	17%
San Diego Harbor Police	348	347	408	17%	18%
State Parks and Recreation	80	86	111	39%	29%
TOTAL	102,055	111,266	111,188	9%	<-1%

NOTES: FBI Index crimes include homicide, rape, robbery, aggravated assault, burglary, larceny, and motor vehicle theft. Due to staffing shortages and computer program problems encountered in 2005, San Diego State University (SDSU) experienced data entry delays. SDSU crime data include January through August 2005 and cannot be compared to prior years; crime data for all months will be included when updated statistics are released. If comparison numbers equal 30 or less, percent changes are omitted.

SOURCE: SANDAG

Appendix Table 6
NUMBER OF VIOLENT CRIMES BY JURISDICTION
San Diego Region, 2001, 2004, and 2005

	2001	2004	2005	Change	
				2001-2005	2004-2005
Carlsbad	197	270	257	30%	-5%
Chula Vista	929	838	927	<-1%	11%
Coronado	29	41	22	--	--
El Cajon	621	545	518	-17%	-5%
Escondido	576	676	692	20%	2%
La Mesa	204	200	201	-1%	1%
National City	477	421	456	-4%	8%
Oceanside	1,070	1,023	983	-8%	-4%
San Diego	7,405	6,774	6,603	-11%	-3%
Sheriff - Total	3,015	3,022	3,107	3%	3%
Del Mar	36	13	10	--	--
Encinitas	155	150	171	10%	14%
Imperial Beach	166	190	132	-20%	-31%
Lemon Grove	130	170	156	20%	-8%
Poway	106	75	95	-10%	27%
San Marcos	238	250	237	<-1%	-5%
Santee	226	165	163	-28%	-1%
Solana Beach	34	36	24	--	--
Vista	419	465	530	26%	14%
Unincorporated	1,505	1,508	1,589	6%	5%
Alpine	91	95	75	-18%	-21%
Fallbrook	164	113	177	8%	57%
Lakeside	203	150	216	6%	44%
Ramona	84	76	96	14%	26%
Spring Valley	285	386	325	14%	-16%
Valley Center	96	88	79	-18%	-10%
Other Unincorporated	582	600	621	7%	4%
California Highway Patrol	6	15	20	--	--
California State University San Marcos	0	3	3	--	--
San Diego State University	28	24	12	--	--
University of California San Diego	7	6	12	--	--
San Diego Harbor Police	20	17	17	--	--
State Parks and Recreation	5	5	5	--	--
TOTAL	14,589	13,880	13,835	-5%	<-1%

NOTES: FBI Index violent crimes include homicide, rape, robbery, and aggravated assault. Due to staffing shortages and computer program problems encountered in 2005, San Diego State University (SDSU) experienced data entry delays. SDSU crime data include January through August 2005 and cannot be compared to prior years; crime data for all months will be included when updated statistics are released. If comparison numbers equal 30 or less, percent changes are omitted.

SOURCE: SANDAG

Appendix Table 7
NUMBER OF PROPERTY CRIMES BY JURISDICTION
San Diego Region, 2001, 2004, and 2005

	2001	2004	2005	Change	
				2001-2005	2004-2005
Carlsbad	1,864	2,163	2,411	29%	11%
Chula Vista	6,715	7,214	7,489	12%	4%
Coronado	388	658	527	36%	-20%
El Cajon	3,550	4,259	4,043	14%	-5%
Escondido	4,618	5,655	4,911	6%	-13%
La Mesa	2,019	2,212	2,229	10%	1%
National City	2,155	2,834	2,726	26%	-4%
Oceanside	4,817	6,115	5,657	17%	-7%
San Diego	43,039	45,443	46,213	7%	2%
Sheriff - Total	16,583	19,054	19,318	16%	1%
Del Mar	225	197	266	18%	35%
Encinitas	1,321	1,251	1,234	-7%	-1%
Imperial Beach	823	895	790	-4%	-12%
Lemon Grove	757	914	805	6%	-12%
Poway	921	849	815	-12%	-4%
San Marcos	1,287	1,495	1,630	27%	9%
Santee	1,233	1,232	1,316	7%	7%
Solana Beach	303	334	312	3%	-7%
Vista	2,133	2,896	2,971	39%	3%
Unincorporated	7,580	8,991	9,179	21%	2%
Alpine	566	609	649	15%	7%
Fallbrook	892	1,181	1,398	57%	18%
Lakeside	883	1,267	1,331	51%	5%
Ramona	491	460	464	-5%	1%
Spring Valley	1,515	1,660	1,693	12%	2%
Valley Center	333	460	499	50%	8%
Other Unincorporated	2,900	3,354	3,145	8%	-6%
California Highway Patrol	164	112	139	-15%	24%
California State University San Marcos	19	49	62	--	27%
San Diego State University	690	565	383	--	--
University of California San Diego	442	642	748	69%	17%
San Diego Harbor Police	328	330	391	19%	18%
State Parks and Recreation	75	81	106	41%	31%
TOTAL	87,466	97,386	97,353	11%	<-1%

NOTES: Property crime includes burglary, larceny, and motor vehicle theft. Due to staffing shortages and computer program problems encountered in 2005, San Diego State University (SDSU) experienced data entry delays. SDSU crime data include January through August 2005 and cannot be compared to prior years; crime data for all months will be included when updated statistics are released. If comparison numbers equal 30 or less, percent changes are omitted.

SOURCE: SANDAG

**Appendix Table 8
NUMBER OF CRIMES BY OFFENSE
San Diego Region, 1981-2005**

	Homicide	Rape	Robbery	Aggravated Assault	Total Violent Crime	Total Burglary	Total Larceny	Motor Vehicle Theft	Total Property Crime	Total FBI Index
1981	157	968	5,206	5,370	11,701	35,919	60,858	11,930	108,707	120,408
1982	124	857	4,894	4,767	10,642	32,385	63,217	12,425	108,027	118,669
1983	131	825	4,031	5,419	10,406	30,972	60,618	12,097	103,687	114,093
1984	163	747	4,126	5,697	10,733	29,560	60,027	13,875	103,462	114,195
1985	162	596	4,434	5,624	10,816	31,026	62,077	16,425	109,528	120,344
1986	195	773	5,908	8,278	15,154	33,950	69,527	21,755	125,232	140,386
1987	177	801	5,420	9,883	16,281	35,176	76,543	29,670	141,389	157,670
1988	228	766	5,171	10,834	16,999	35,233	81,002	38,459	154,694	171,693
1989	191	834	5,636	11,726	18,387	34,325	85,448	40,897	160,670	179,057
1990	216	899	6,704	13,385	21,204	33,849	84,564	38,862	157,275	178,479
1991	278	969	8,397	15,005	24,649	34,884	79,887	34,394	149,165	173,814
1992	244	957	8,554	15,361	25,116	34,377	77,477	33,999	145,853	170,969
1993	246	802	7,494	14,416	22,958	32,014	73,623	33,192	138,829	161,787
1994	207	869	6,887	15,406	23,369	30,037	70,555	28,755	129,347	152,716
1995	197	724	5,892	14,205	21,018	25,818	62,799	23,392	112,009	133,027
1996	167	815	5,466	12,506	18,954	21,871	62,014	20,592	104,477	123,431
1997	125	882	4,788	12,209	18,004	20,428	61,460	19,461	101,349	119,353
1998	86	779	4,227	11,501	16,593	18,378	55,251	18,685	92,314	108,907
1999	106	810	3,468	9,915	14,299	15,230	51,083	17,113	83,426	97,725
2000	97	801	3,347	9,504	13,749	15,777	47,851	17,038	80,666	94,415
2001	92	830	3,430	10,237	14,589	16,725	51,320	19,421	87,466	102,055
2002	87	798	3,342	9,805	14,032	18,199	53,252	19,884	91,335	105,367
2003	130	856	3,375	9,646	14,007	18,893	54,281	23,460	96,634	110,641
2004	128	797	3,588	9,367	13,880	17,545	55,669	24,172	97,386	111,266
2005	98	807	3,937	8,993	13,835	17,655	53,983	25,715	97,353	111,188

NOTE: The California Crime Index (CCI) includes all FBI Index crimes **except** larceny theft.

SOURCES: California Department of Finance; U.S. Census; SANDAG

Appendix Table 9
NUMBER OF DOMESTIC VIOLENCE INCIDENTS BY JURISDICTION
San Diego Region, 2001, 2004, and 2005

	2001	2004	2005	Change	
				2001-2005	2004-2005
Carlsbad	247	360	372	51%	3%
Chula Vista	1,972	1,818	1,972	0%	8%
Coronado	64	58	54	-16%	-7%
El Cajon	898	672	729	-19%	8%
Escondido	912	898	961	5%	7%
La Mesa	359	365	352	-2%	-4%
National City	566	624	577	2%	-8%
Oceanside	1,616	2,070	2,267	40%	10%
San Diego	10,694	10,033	9,614	-10%	-4%
Sheriff - Total	3,440	4,407	4,153	21%	-6%
Del Mar	12	14	22	--	--
Encinitas	182	208	176	-3%	-15%
Imperial Beach	205	297	220	7%	-26%
Lemon Grove	118	191	167	42%	-13%
Poway	133	204	171	29%	-16%
San Marcos	208	359	371	78%	3%
Santee	288	322	309	7%	-4%
Solana Beach	29	34	32	--	-6%
Vista	561	557	551	-2%	-1%
Unincorporated	1,704	2,221	2,134	25%	-4%
TOTAL	20,793	21,351	21,091	1%	-1%

NOTES: Total includes a relatively small number of incidents reported by the San Diego Harbor Police, California Highway Patrol, California Department of Parks and Recreation, California State University San Marcos, San Diego State University; University of California San Diego; and individual unincorporated areas in the Sheriff's jurisdiction. If comparison numbers equal 30 or less, percent changes are omitted.

SOURCE: SANDAG

Appendix Table 10
 NUMBER OF CRIMES BY OFFENSE, BY JURISDICTION
 San Diego Region, 2001

	Homicide	Rape	Robbery	Aggravated Assault	Residential Burglary	Non-Residential Burglary	Total Burglary	Larceny Over \$400	Larceny \$400 and Under	Total Larceny	Motor Vehicle Theft	Arson	FBI Crime Index	California Crime Index
Carlsbad	2	11	41	143	208	205	413	420	832	1,252	199	11	2,061	809
Chula Vista	8	69	242	610	562	447	1,009	1,014	2,985	3,999	1,707	58	7,644	3,645
Coronado	0	9	6	14	36	34	70	93	197	290	28	1	417	127
El Cajon	5	37	139	440	368	299	667	591	1,429	2,020	863	27	4,171	2,151
Escondido	2	31	167	376	464	387	851	877	1,949	2,826	941	23	5,194	2,368
La Mesa	0	13	70	121	177	168	345	385	918	1,303	371	3	2,223	920
National City	1	27	137	312	153	233	386	297	793	1,090	679	11	2,632	1,542
Oceanside	4	86	258	722	705	366	1,071	846	2,228	3,074	672	44	5,887	2,813
San Diego	50	342	1,729	5,284	4,438	2,781	7,219	8,982	16,068	25,050	10,770	201	50,444	25,394
Sheriff - Total	19	201	629	2,166	2,542	2,032	4,574	3,142	5,902	9,044	2,965	155	19,598	10,554
Del Mar	0	4	5	27	17	25	42	69	72	141	42	0	261	120
Encinitas	0	26	27	102	172	158	330	268	536	804	187	6	1,476	672
Imperial Beach	0	15	40	111	130	95	225	110	302	412	186	8	989	577
Lemon Grove	1	8	49	72	77	113	190	132	241	373	194	2	887	514
Poway	0	11	18	77	120	139	259	188	390	578	84	11	1,027	449
San Marcos	1	12	50	175	196	194	390	256	445	701	196	9	1,525	824
Santee	4	18	26	178	151	141	292	200	542	742	199	4	1,459	717
Solana Beach	0	1	10	23	53	61	114	82	76	158	31	3	337	179
Vista	3	19	155	242	317	224	541	408	818	1,226	366	6	2,552	1,326
Unincorporated	10	87	249	1,159	1,309	882	2,191	1,429	2,480	3,909	1,480	106	9,085	5,176
Alpine	1	9	19	62	90	59	149	104	183	287	130	3	657	370
Fallbrook	0	10	24	130	186	102	288	180	322	502	102	3	1,056	554
Lakeside	4	12	21	166	132	107	239	154	307	461	183	0	1,086	625
Ramona	0	1	10	73	82	68	150	93	187	280	61	4	575	295
Spring Valley	0	14	59	212	218	158	376	220	495	715	424	0	1,800	1,085
Valley Center	0	8	11	77	78	31	109	73	97	170	54	1	429	259
Other Unincorporated	5	33	105	439	523	357	880	605	889	1,494	526	95	3,482	1,988
California Highway Patrol	0	0	0	6	0	5	5	6	46	52	107	0	170	118
Calif. State University San Marcos	0	0	0	0	0	1	1	4	14	18	0	0	19	1
San Diego State University	0	3	5	20	16	25	41	220	340	560	89	2	718	158
University of California San Diego	1	0	0	6	10	20	30	102	284	386	26	2	449	63
San Diego Harbor Police	0	0	5	15	1	31	32	163	133	296	0	0	348	52
State Parks and Recreation	0	1	2	2	1	10	11	22	38	60	4	2	80	20
TOTAL	92	830	3,430	10,237	9,681	7,044	16,725	17,164	34,156	51,320	19,421	540	102,055	50,735

NOTE: The California Crime Index (CCI) includes all FBI Index crimes **except** larceny theft.

SOURCE: SANDAG

Appendix Table 11
 26
 NUMBER OF CRIMES BY OFFENSE, BY JURISDICTION
 San Diego Region, 2002

	Homicide	Rape	Robbery	Aggravated Assault	Residential Burglary	Non-Residential Burglary	Total Burglary	Larceny Over \$400	Larceny \$400 and Under	Total Larceny	Motor Vehicle Theft	Arson	FBI Crime Index	California Crime Index
Carlsbad	1	16	49	144	199	227	426	494	902	1,396	241	13	2,273	877
Chula Vista	5	50	257	579	621	447	1,068	1,079	2,654	3,733	1,771	86	7,463	3,730
Coronado	0	7	7	13	55	46	101	100	133	233	46	2	407	174
El Cajon	3	56	125	359	401	384	785	800	1,756	2,556	892	36	4,776	2,220
Escondido	4	40	165	399	567	393	960	962	2,149	3,111	816	21	5,495	2,384
La Mesa	2	11	89	105	180	195	375	436	974	1,410	365	12	2,357	947
National City	4	32	156	358	99	298	397	289	811	1,100	689	10	2,736	1,636
Oceanside	5	75	285	751	709	400	1,109	1,173	2,651	3,824	915	40	6,964	3,140
San Diego	47	330	1,627	5,189	4,599	3,040	7,639	9,020	15,557	24,577	10,715	206	50,124	25,547
Sheriff - Total	16	178	574	1,890	2,777	2,428	5,205	3,650	6,229	9,879	3,206	149	20,948	11,069
Del Mar	0	1	5	14	25	37	62	66	75	141	31	3	254	113
Encinitas	0	13	42	122	161	197	358	328	545	873	189	7	1,597	724
Imperial Beach	0	20	28	114	85	85	170	101	215	316	188	9	836	520
Lemon Grove	0	8	57	89	91	158	249	128	258	386	194	4	983	597
Poway	0	5	11	81	114	129	243	183	354	537	94	11	971	434
San Marcos	1	8	46	136	200	237	437	229	414	643	199	6	1,470	827
Santee	0	11	18	109	139	146	285	228	541	769	188	8	1,380	611
Solana Beach	0	1	13	14	60	52	112	84	128	212	49	2	401	189
Vista	4	23	112	257	408	378	786	577	1,013	1,590	412	13	3,184	1,594
Unincorporated	11	88	242	954	1,494	1,009	2,503	1,726	2,686	4,412	1,662	86	9,872	5,460
Alpine	3	4	15	53	97	68	165	133	219	352	142	8	734	382
Fallbrook	2	11	26	95	174	117	291	161	260	421	123	5	969	548
Lakeside	0	9	20	129	188	102	290	220	395	615	231	0	1,294	679
Ramona	1	3	12	42	59	67	126	98	166	264	61	4	509	245
Spring Valley	2	18	87	185	279	176	455	315	504	819	424	0	1,990	1,171
Valley Center	2	4	17	69	70	59	129	90	107	197	80	2	498	301
Other Unincorporated	1	39	65	381	627	420	1,047	709	1,035	1,744	601	67	3,878	2,134
California Highway Patrol	0	0	0	1	0	2	2	6	41	47	84	0	134	87
Calif. State University San Marcos	0	0	0	0	0	4	4	5	20	25	2	0	31	6
San Diego State University	0	2	2	9	18	17	35	248	355	603	79	2	730	127
University of California San Diego	0	1	1	2	11	38	49	111	277	388	52	2	493	105
Harbor Police	0	0	4	5	0	14	14	174	140	314	0	1	337	23
State Parks and Recreation	0	0	1	1	0	30	30	21	35	56	11	5	99	43
TOTAL	87	798	3,342	9,805	10,236	7,963	18,199	18,568	34,684	53,252	19,884	585	105,367	52,115

NOTE: The California Crime Index (CCI) includes all FBI Index crimes **except** larceny theft.

SOURCE: SANDAG

Appendix Table 12
 NUMBER OF CRIMES BY OFFENSE, BY JURISDICTION
 San Diego Region, 2003

	Homicide	Rape	Robbery	Aggravated Assault	Residential Burglary	Non-Residential Burglary	Total Burglary	Larceny Over \$400	Larceny \$400 and Under	Total Larceny	Motor Vehicle Theft	Arson	FBI Crime Index	California Crime Index
Carlsbad	4	14	64	184	240	256	496	493	952	1,445	258	13	2,465	1,020
Chula Vista	7	48	249	472	606	398	1,004	1,137	2,817	3,954	2,148	44	7,882	3,928
Coronado	0	5	3	27	73	31	104	144	280	424	72	11	635	211
El Cajon	4	43	154	354	557	330	887	689	1,611	2,300	1,152	26	4,894	2,594
Escondido	5	46	161	379	499	464	963	952	2,142	3,094	997	32	5,645	2,551
La Mesa	2	12	66	93	198	160	358	367	847	1,214	554	15	2,299	1,085
National City	9	33	155	349	132	205	337	407	1,000	1,407	996	13	3,286	1,879
Oceanside	8	63	332	687	650	464	1,114	1,010	2,627	3,637	739	20	6,580	2,943
San Diego	65	406	1,626	5,269	4,925	3,151	8,076	9,155	16,584	25,739	12,567	238	53,748	28,009
Sheriff – Total	26	178	550	1,781	2,787	2,600	5,387	3,306	6,380	9,686	3,676	159	21,284	11,598
Del Mar	0	3	3	4	35	34	69	60	66	126	58	1	263	137
Encinitas	0	10	40	100	157	172	329	288	516	804	244	7	1,527	723
Imperial Beach	0	8	34	102	139	97	236	119	319	438	181	11	999	561
Lemon Grove	1	4	50	90	90	142	232	110	251	361	237	3	975	614
Poway	2	3	11	62	83	146	229	193	336	529	100	12	936	407
San Marcos	3	18	46	138	166	274	440	248	517	765	270	12	1,680	915
Santee	0	15	18	96	117	176	293	252	572	824	208	9	1,454	630
Solana Beach	0	3	5	12	40	63	103	70	87	157	38	1	318	161
Vista	2	30	122	227	405	430	835	397	896	1,293	474	26	2,983	1,690
Unincorporated	18	84	221	950	1,555	1,066	2,621	1,569	2,820	4,389	1,866	77	10,149	5,760
Alpine	0	1	11	54	88	76	164	126	198	324	146	1	700	376
Fallbrook	1	10	21	75	223	155	378	197	364	561	129	3	1,175	614
Lakeside	1	11	26	124	154	114	268	215	440	655	268	0	1,353	698
Ramona	2	5	7	79	79	105	184	116	282	398	54	1	729	331
Spring Valley	0	25	81	168	231	168	399	202	428	630	444	0	1,747	1,117
Valley Center	1	2	13	64	76	93	169	108	151	259	116	6	624	365
Other Unincorporated	13	30	62	386	704	355	1,059	605	957	1,562	709	66	3,821	2,259
California Highway Patrol	0	0	0	11	0	2	2	7	46	53	78	0	144	91
Calif. State University San Marcos	0	0	0	1	0	6	6	6	19	25	1	0	33	8
San Diego State University	0	7	7	18	16	16	32	181	290	471	160	4	695	224
University of California San Diego	0	1	3	3	22	41	63	109	341	450	54	2	574	124
Harbor Police	0	0	4	9	0	25	25	184	128	312	2	3	352	40
State Parks and Recreation	0	0	1	9	1	38	39	32	38	70	6	3	125	55
TOTAL	130	856	3,375	9,646	10,706	8,187	18,893	18,179	36,102	54,281	23,460	583	110,641	56,360

NOTE: The California Crime Index (CCI) includes all FBI Index crimes **except** larceny theft.

SOURCE: SANDAG

Appendix Table 13
 NUMBER OF CRIMES BY OFFENSE, BY JURISDICTION
 San Diego Region, 2004

	Homicide	Rape	Robbery	Aggravated Assault	Residential Burglary	Non-Residential Burglary	Total Burglary	Larceny Over \$400	Larceny \$400 and Under	Total Larceny	Motor Vehicle Theft	Arson	FBI Crime Index	California Crime Index
Carlsbad	2	13	42	213	253	204	457	502	974	1,476	230	8	2,433	957
Chula Vista	15	50	296	477	687	497	1,184	1,252	2,735	3,987	2,043	31	8,052	4,065
Coronado	0	10	15	16	74	41	115	108	347	455	88	1	699	244
El Cajon	7	21	164	353	395	420	815	736	1,618	2,354	1,090	32	4,804	2,450
Escondido	3	22	198	453	412	373	785	1,026	2,268	3,294	1,576	35	6,331	3,037
La Mesa	0	10	72	118	183	210	393	399	886	1,285	534	5	2,412	1,127
National City	5	16	139	261	135	255	390	366	1,178	1,544	900	15	3,255	1,711
Oceanside	9	77	289	648	706	419	1,125	1,181	2,985	4,166	824	33	7,138	2,972
San Diego	62	373	1,650	4,689	4,495	2,810	7,305	9,399	15,769	25,168	12,970	191	52,217	27,049
Sheriff - Total	25	192	709	2,096	2,713	2,119	4,832	3,802	6,711	10,513	3,709	160	22,076	11,563
Del Mar	0	2	3	8	14	15	29	78	63	141	27	0	210	69
Encinitas	2	15	38	95	145	140	285	298	503	801	165	6	1,401	600
Imperial Beach	1	8	48	133	137	99	236	124	332	456	203	23	1,085	629
Lemon Grove	1	7	47	115	83	150	233	115	338	453	228	5	1,084	631
Poway	0	4	10	61	83	107	190	202	359	561	98	13	924	363
San Marcos	1	17	61	171	148	198	346	264	580	844	305	12	1,745	901
Santee	1	16	44	104	103	135	238	260	530	790	204	4	1,397	607
Solana Beach	0	0	17	19	25	47	72	111	98	209	53	1	370	161
Vista	3	28	162	272	473	268	741	567	1,069	1,636	519	16	3,361	1,725
Unincorporated	16	95	279	1,118	1,502	960	2,462	1,783	2,839	4,622	1,907	80	10,499	5,877
Alpine	0	2	21	72	99	74	173	119	178	297	139	4	704	407
Fallbrook	1	13	22	77	248	124	372	229	426	655	154	7	1,294	639
Lakeside	3	14	28	105	173	146	319	238	433	671	277	0	1,417	746
Ramona	0	6	2	68	70	60	130	91	161	252	78	1	536	284
Spring Valley	9	12	110	255	242	165	407	273	483	756	497	0	2,046	1,290
Valley Center	1	8	26	53	76	70	146	99	113	212	102	11	548	336
Other Unincorporated	2	40	70	488	594	321	915	734	1,045	1,779	660	57	3,954	2,175
California Highway Patrol	0	0	0	15	0	3	3	2	36	38	71	0	127	89
Calif. State University San Marcos	0	2	0	1	3	4	7	4	38	42	0	0	52	10
San Diego State University	0	9	6	9	19	31	50	162	270	432	83	6	589	157
University of California San Diego	0	2	1	3	32	31	63	157	375	532	47	4	648	116
San Diego Harbor Police	0	0	7	10	0	12	12	167	150	317	1	1	347	30
State Parks and Recreation	0	0	0	5	1	8	9	30	36	66	6	3	86	20
TOTAL	128	797	3,588	9,367	10,108	7,437	17,545	19,29	36,376	55,669	24,172	525	111,266	55,597

NOTE: The California Crime Index (CCI) includes all FBI Index crimes **except** larceny theft.

SOURCE: SANDAG

Appendix Table 14
NUMBER OF CRIMES BY OFFENSE, BY JURISDICTION
San Diego Region, 2005

	Homicide	Rape	Robbery	Aggravated Assault	Residential Burglary	Non-Residential Burglary	Total Burglary	Larceny Over \$400	Larceny \$400 and Under	Total Larceny	Motor Vehicle Theft	Arson	FBI Crime Index	California Crime Index
Carlsbad	2	11	80	164	285	232	517	540	1,108	1,648	246	11	2,668	1,020
Chula Vista	5	66	338	518	626	609	1,235	1,277	2,481	3,758	2,496	23	8,416	4,658
Coronado	0	6	6	10	69	20	89	127	222	349	89	5	549	200
El Cajon	2	40	171	305	296	473	769	658	1,480	2,138	1,136	36	4,561	2,423
Escondido	2	31	186	473	399	402	801	996	2,035	3,031	1,079	37	5,603	2,572
La Mesa	2	10	107	82	190	138	328	453	892	1,345	556	6	2,430	1,085
National City	4	16	182	254	122	254	376	369	1,040	1,409	941	15	3,182	1,773
Oceanside	7	78	264	634	718	347	1,065	1,096	2,750	3,846	746	33	6,640	2,794
San Diego	51	376	1,862	4,314	4,611	2,851	7,462	9,771	14,842	24,613	14,138	233	52,816	28,203
Sheriff - Total	23	170	725	2,189	2,589	2,320	4,909	3,982	6,361	10,343	4,066	151	22,425	12,082
Del Mar	0	0	1	9	24	26	50	87	92	179	37	0	276	97
Encinitas	3	11	45	112	165	159	324	330	394	724	186	7	1,405	681
Imperial Beach	0	3	41	88	99	89	188	111	224	335	267	4	922	587
Lemon Grove	1	6	59	90	93	115	208	102	237	339	258	6	961	622
Poway	1	11	20	63	70	102	172	201	350	551	92	7	910	359
San Marcos	0	15	57	165	121	238	359	318	671	989	282	10	1,867	878
Santee	1	16	30	116	143	138	281	301	499	800	235	9	1,479	679
Solana Beach	0	1	12	11	48	39	87	81	98	179	46	1	336	157
Vista	4	21	190	315	404	367	771	547	1,074	1,621	579	29	3,501	1,880
Unincorporated	13	86	270	1,220	1,422	1,047	2,469	1,904	2,722	4,626	2,084	78	10,768	6,142
Alpine	1	5	15	54	104	71	175	164	189	353	121	1	724	371
Fallbrook	0	11	43	123	259	203	462	260	499	759	177	7	1,575	816
Lakeside	0	13	34	169	169	138	307	289	426	715	309	0	1,547	832
Ramona	1	7	12	76	58	61	119	116	145	261	84	1	560	299
Spring Valley	7	14	77	227	245	135	380	275	466	741	572	0	2,018	1,277
Valley Center	1	9	6	63	62	101	163	114	116	230	106	13	578	348
Other Unincorporated	3	27	83	508	525	338	863	686	881	1,567	715	56	3,766	2,199
California Highway Patrol	0	0	2	18	2	9	11	4	28	32	96	0	159	127
Calif. State University San Marcos	0	0	0	3	1	7	8	9	43	52	2	0	65	13
San Diego State University	0	2	3	7	7	5	12	127	197	324	47	0	395	71
University of California San Diego	0	1	4	7	25	30	55	161	463	624	69	1	760	136
San Diego Harbor Police	0	0	7	10	0	9	9	204	177	381	1	2	408	27
State Parks and Recreation	0	0	0	5	1	8	9	32	58	90	7	2	111	21
TOTAL	98	807	3,937	8,993	9,941	7,714	17,655	19,806	34,177	53,983	25,715	555	111,188	57,205

NOTE: Due to staffing shortages and computer program problems encountered in 2005, San Diego State University (SDSU) experienced data entry delays. SDSU crime data include January through August 2005; crime data for all months will be included when updated statistics are released.

SOURCE: SANDAG

Appendix Table 15
VIOLENT CRIME CLEARANCE RATE BY JURISDICTION
San Diego Region, 2001, 2004, and 2005

	2001	2004	2005	Difference	
				2001-2005	2004-2005
Carlsbad	60%	69%	49%	-11%	-20%
Chula Vista	50%	34%	34%	-16%	0%
Coronado	55%	37%	77%	22%	40%
El Cajon	70%	39%	54%	-16%	15%
Escondido	64%	46%	43%	-21%	-3%
La Mesa	73%	68%	53%	-20%	-15%
National City	44%	28%	29%	-15%	1%
Oceanside	48%	43%	35%	-13%	-8%
San Diego	60%	53%	52%	-8%	-1%
Sheriff - Total	53%	58%	44%	-9%	-14%
Del Mar	28%	77%	30%	2%	-47%
Encinitas	41%	49%	49%	8%	0%
Imperial Beach	51%	58%	42%	-9%	-16%
Lemon Grove	42%	58%	37%	-5%	-21%
Poway	60%	45%	54%	-6%	9%
San Marcos	53%	55%	36%	-17%	-19%
Santee	77%	69%	50%	-27%	-19%
Solana Beach	44%	64%	33%	-11%	-31%
Vista	43%	56%	39%	-4%	-17%
Unincorporated	56%	59%	45%	-11%	-14%
Alpine	49%	60%	39%	-10%	-21%
Fallbrook	62%	53%	48%	-14%	-5%
Ramona	62%	93%	48%	-14%	-45%
Valley Center	57%	67%	52%	-5%	-15%
Other Unincorporated	100%	108%	84%	-16%	-24%
California Highway Patrol	17%	73%	55%	38%	-18%
California State University San Marcos	--	--	--	--	--
San Diego State University	32%	29%	8%	--	--
University of California San Diego	57%	33%	58%	1%	25%
San Diego Harbor Police	40%	71%	47%	7%	-24%
State Parks and Recreation	0%	0%	20%	20%	20%
TOTAL	57%	51%	46%	-11%	-5%

NOTES: California State University San Marcos reported very few violent crimes and did not report any violent crime clearances during the comparison years. Due to staffing shortages and computer program problems encountered in 2005, San Diego State University (SDSU) experienced data entry delays. SDSU data include January through August 2005 and cannot be compared to prior years; data for all months will be included when updated statistics are released.

SOURCE: SANDAG

Appendix Table 16
PROPERTY CRIME CLEARANCE RATE BY JURISDICTION
San Diego Region, 2001, 2004, and 2005

	2001	2004	2005	Difference	
				2001-2005	2004-2005
Carlsbad	20%	26%	21%	1%	-5%
Chula Vista	14%	14%	12%	-2%	-2%
Coronado	6%	11%	13%	7%	2%
El Cajon	18%	15%	18%	0%	3%
Escondido	15%	13%	15%	0%	2%
La Mesa	16%	18%	15%	-1%	-3%
National City	11%	18%	15%	4%	-3%
Oceanside	11%	13%	13%	2%	0%
San Diego	11%	10%	10%	-1%	0%
Sheriff - Total	11%	14%	10%	-1%	-4%
Del Mar	3%	4%	2%	-1%	-2%
Encinitas	9%	15%	9%	0%	-6%
Imperial Beach	9%	11%	6%	-3%	-5%
Lemon Grove	15%	22%	14%	-1%	-8%
Poway	14%	18%	15%	1%	-3%
San Marcos	12%	18%	20%	8%	2%
Santee	18%	15%	14%	-4%	-1%
Solana Beach	5%	10%	7%	2%	-3%
Vista	13%	14%	12%	-1%	-2%
Unincorporated	10%	12%	8%	-2%	-4%
Alpine	11%	13%	6%	-5%	-7%
Fallbrook	6%	11%	8%	2%	-3%
Ramona	19%	20%	8%	-11%	-12%
Valley Center	7%	11%	7%	0%	-4%
Other Unincorporated	19%	22%	15%	-4%	-7%
California Highway Patrol	1%	4%	4%	3%	0%
California State University San Marcos	0%	0%	2%	2%	2%
San Diego State University	6%	14%	11%	--	--
University of California San Diego	5%	10%	6%	1%	-4%
San Diego Harbor Police	5%	8%	7%	2%	-1%
State Parks and Recreation	3%	5%	3%	0%	-2%
TOTAL	12%	13%	11%	-1%	-2%

NOTE: Due to staffing shortages and computer program problems encountered in 2005, San Diego State University (SDSU) experienced data entry delays. SDSU data include January through August 2005 and cannot be compared to prior years; data for all months will be included when updated statistics are released.

SOURCE: SANDAG

Appendix Table 17
DOLLAR VALUE OF PROPERTY STOLEN BY JURISDICTION
San Diego Region, 2001, 2004, and 2005

	2001	2004	2005	Change	
				2001-005	2004-005
Carlsbad	\$4,538,761	\$4,899,601	\$7,116,017	57%	45%
Chula Vista	17,284,226	23,490,562	23,721,811	37%	1%
Coronado	680,490	1,243,404	1,269,384	87%	2%
El Cajon	8,639,422	11,897,051	11,524,166	33%	-3%
Escondido	8,664,398	12,453,424	10,930,321	26%	-12%
La Mesa	3,223,863	12,280,454	5,789,586	80%	-53%
National City	5,398,301	7,167,043	7,879,328	46%	10%
Oceanside	7,441,815	10,404,715	8,246,456	11%	-21%
San Diego	123,990,435	112,325,318	131,449,777	6%	17%
Sheriff – Total	40,303,912	51,605,605	58,359,676	45%	13%
Del Mar	853,133	997,935	2,312,438	171%	132%
Encinitas	3,118,546	2,813,560	4,183,802	34%	49%
Imperial Beach	1,728,949	1,850,147	2,103,170	22%	14%
Lemon Grove	2,412,096	1,894,963	2,479,902	3%	31%
Poway	1,937,832	2,088,613	1,458,137	-25%	-30%
San Marcos	2,864,039	3,395,298	3,380,317	18%	<-1%
Santee	1,851,085	2,300,273	2,753,888	49%	20%
Solana Beach	1,011,930	1,045,086	1,232,303	22%	18%
Vista	3,826,389	6,538,814	8,889,000	132%	36%
Unincorporated	20,699,913	28,680,916	29,566,719	43%	3%
Alpine	1,398,977	2,059,404	1,697,962	21%	-18%
Fallbrook	1,721,854	3,148,786	3,465,165	101%	10%
Ramona	1,033,586	1,059,615	1,472,675	42%	39%
Valley Center	868,652	1,569,641	1,509,664	74%	-4%
Other Unincorporated	15,676,844	20,843,470	21,421,253	37%	3%
California Highway Patrol	671,196	410,608	562,281	-16%	37%
California State University San Marcos	13,936	19,484	25,779	85%	32%
San Diego State University	1,051,280	684,664	492,300	--	--
University of California San Diego	396,539	613,396	874,316	120%	43%
San Diego Harbor Police	544,133	743,291	612,035	12%	-18%
State Parks and Recreation	129,717	116,514	190,336	47%	63%
TOTAL	\$222,972,424	\$250,355,134	\$269,043,569	21%	7%

NOTE: Due to staffing shortages and computer program problems encountered in 2005, San Diego State University (SDSU) experienced data entry delays. SDSU data include January through August 2005 and cannot be compared to prior years; data for all months will be included when updated statistics are released.

SOURCE: SANDAG

Appendix Table 18
DOLLAR VALUE OF PROPERTY RECOVERED BY JURISDICTION
San Diego Region, 2001, 2004, and 2005

	2001	2004	2005	Change	
				2001-2005	2004-2005
Carlsbad	\$1,710,923	\$1,763,787	\$1,662,509	-3%	-6%
Chula Vista	8,734,106	10,671,401	12,025,919	38%	13%
Coronado	208,960	279,693	427,988	105%	53%
El Cajon	4,354,494	6,086,351	5,699,093	31%	-6%
Escondido	4,399,452	6,844,538	5,882,123	34%	-14%
La Mesa	1,581,467	2,148,688	2,779,914	76%	29%
National City	2,805,453	3,921,863	4,207,667	50%	7%
Oceanside	3,079,821	4,268,694	3,951,505	28%	-7%
San Diego	50,210,723	52,094,176	56,942,378	13%	9%
Sheriff - Total	13,373,269	21,873,553	18,271,249	37%	-16%
Del Mar	364,630	288,053	329,498	-10%	14%
Encinitas	1,145,167	1,218,507	1,092,395	-5%	-10%
Imperial Beach	686,804	985,961	889,239	29%	-10%
Lemon Grove	792,577	1,073,563	1,232,618	56%	15%
Poway	678,985	591,610	609,913	-10%	3%
San Marcos	934,231	1,811,411	1,395,888	49%	-23%
Santee	657,152	911,735	792,750	21%	-13%
Solana Beach	274,497	257,568	327,516	19%	27%
Vista	1,492,493	2,800,825	2,254,856	51%	-19%
Unincorporated	6,346,733	11,934,320	9,346,576	47%	-22%
Alpine	574,229	683,332	700,931	22%	3%
Fallbrook	432,638	847,497	998,491	131%	18%
Ramona	338,294	497,504	356,562	5%	-28%
Valley Center	201,672	744,970	424,250	110%	-43%
Other Unincorporated	4,799,900	9,161,017	6,866,342	43%	-25%
California Highway Patrol	232,770	128,740	142,630	-39%	11%
California State University San Marcos	0	3,265	4,156	--	27%
San Diego State University	367,209	131,440	211,790	--	--
University of California San Diego	101,979	139,427	147,373	45%	6%
San Diego Harbor Police	3,448	19,861	12,589	265%	-37%
State Parks and Recreation	87,765	5,106	58,195	-34%	1040%
TOTAL	\$91,251,839	\$110,380,583	\$112,427,078	23%	2%

NOTE: Due to staffing shortages and computer program problems encountered in 2005, San Diego State University (SDSU) experienced data entry delays. SDSU data include January through August 2005 and cannot be compared to prior years; data for all months will be included when updated statistics are released.

SOURCE: SANDAG

Appendix Table 19
PROPERTY RECOVERY RATES BY JURISDICTION
San Diego Region, 2001, 2004, and 2005

	2001	2004	2005	Difference	
				2001-2005	2004-2005
Carlsbad	38%	36%	23%	-15%	-13%
Chula Vista	51%	45%	51%	0%	6%
Coronado	31%	22%	34%	3%	12%
El Cajon	50%	51%	49%	-1%	-2%
Escondido	51%	55%	54%	3%	-1%
La Mesa	49%	17%	48%	-1%	31%
National City	52%	55%	53%	1%	-2%
Oceanside	41%	41%	48%	7%	7%
San Diego	40%	46%	43%	3%	-3%
Sheriff - Total	33%	42%	31%	-2%	-11%
Del Mar	43%	29%	14%	-29%	-15%
Encinitas	37%	43%	26%	-11%	-17%
Imperial Beach	40%	53%	42%	2%	-11%
Lemon Grove	33%	57%	50%	17%	-7%
Poway	35%	28%	42%	7%	14%
San Marcos	33%	53%	41%	8%	-12%
Santee	36%	40%	29%	-7%	-11%
Solana Beach	27%	25%	27%	0%	2%
Vista	39%	43%	25%	-14%	-18%
Unincorporated	31%	42%	32%	1%	-10%
Alpine	41%	33%	41%	0%	8%
Fallbrook	25%	27%	29%	4%	2%
Ramona	33%	47%	24%	-9%	-23%
Valley Center	23%	47%	28%	5%	-19%
Other Unincorporated	31%	42%	32%	1%	-10%
California Highway Patrol	35%	31%	25%	-10%	-6%
California State University San Marcos	0%	17%	16%	16%	-1%
San Diego State University	35%	19%	43%	--	--
University of California San Diego	26%	23%	17%	-9%	-6%
San Diego Harbor Police	1%	3%	2%	1%	-1%
State Parks and Recreation	68%	4%	31%	-37%	27%
TOTAL	41%	44%	42%	1%	-2%

NOTE: Due to staffing shortages and computer program problems encountered in 2005, San Diego State University (SDSU) experienced data entry delays. SDSU data include January through August 2005 and cannot be compared to prior years; data for all months will be included when updated statistics are released.

SOURCE: SANDAG

Appendix Table 20
POPULATION, BY JURISDICTION
San Diego Region, 2001, 2004, and 2005

	2001	2004	2005	Change	
				2001-2005	2004-2005
Carlsbad	83,242	92,719	95,146	14%	3%
Chula Vista	181,453	208,510	217,543	20%	4%
Coronado	23,974	26,405	26,973	13%	2%
El Cajon	96,150	97,359	97,703	2%	<1%
Escondido	135,650	140,088	141,350	4%	1%
La Mesa	55,353	55,885	55,983	1%	<1%
National City	55,928	60,027	63,773	14%	6%
Oceanside	164,256	172,800	175,085	7%	1%
San Diego	1,241,788	1,291,701	1,305,736	5%	1%
Sheriff - Total	793,777	831,993	841,253	6%	1%
Del Mar	4,452	4,543	4,543	2%	0%
Encinitas	59,075	62,401	62,774	6%	1%
Imperial Beach	27,347	27,698	27,710	1%	<1%
Lemon Grove	25,219	25,517	25,531	1%	<1%
Poway	48,967	50,483	50,675	3%	<1%
San Marcos	57,683	67,226	73,054	27%	9%
Santee	53,535	53,864	54,476	2%	1%
Solana Beach	13,203	13,392	13,400	1%	<1%
Vista	91,228	93,773	94,109	3%	<1%
Unincorporated	413,068	433,096	434,981	5%	<1%
Alpine	26,992	27,916	28,026	4%	<1%
Fallbrook	46,622	50,341	50,913	9%	1%
Lakeside	52,037	52,512	52,492	1%	<-1%
Ramona	33,126	35,222	35,505	7%	1%
Spring Valley	68,928	70,535	70,348	2%	<-1%
Valley Center	20,857	21,266	21,975	5%	3%
Other Unincorporated	164,506	175,304	175,722	7%	<1%
Camp Pendleton	32,086	35,527	30,735	-4%	-13%
TOTAL	2,863,657	3,013,014	3,051,280	7%	1%
Occupied Households	1,003,036	1,048,197	1,061,027	6%	1%
Registered Vehicles	2,071,863	2,202,352	2,232,633	6%	1%
Female Population	1,431,829	1,506,507	1,525,640	7%	1%

NOTES: Population figures are based upon U.S. Census 2000 and current California Department of Finance estimates. "Sheriff-Total" includes contract cities and the unincorporated area served by the San Diego County Sheriff's Department. Camp Pendleton is not included. "Unincorporated" includes Alpine, Campo, Fallbrook, Julian, Lakeside, Pine Valley, Ramona, Ranchita, Spring Valley, and Valley Center, as well as the unincorporated areas of Encinitas, Imperial Beach, Lemon Grove, San Marcos, Poway, Santee, and Vista. "Other Unincorporated" is equal to the unincorporated area of the Sheriff's jurisdiction minus Alpine, Fallbrook, Lakeside, Ramona, Spring Valley, and Valley Center.

SOURCES: California Department of Finance; U.S. Census 2000; SANDAG