



Crime in the San Diego Region Mid-Year 2005 Statistics

September 2005

Criminal Justice Research Division



401 B Street
Suite 800
San Diego, CA 92101
(619) 699-1900

BOARD OF DIRECTORS



The 18 cities and county government are SANDAG serving as the forum for regional decision-making. SANDAG builds consensus; plans, engineers, and builds public transit; makes strategic plans; obtains and allocates resources; and provides information on a broad range of topics pertinent to the region's quality of life.

CHAIR: Hon. Mickey Cafagna

FIRST VICE CHAIR: Hon. Mary Teresa Sessom

SECOND VICE CHAIR: Hon. Jack Dale

EXECUTIVE DIRECTOR: Gary L. Gallegos

CITY OF CARLSBAD

Hon. Matt Hall, Mayor Pro Tem
(A) Hon. Bud Lewis, Mayor
(A) Hon. Ann Kulchin, Councilmember

CITY OF CHULA VISTA

Hon. Steve Padilla, Mayor
(A) Hon. Patty Davis, Deputy Mayor
(A) Hon. Jerry Rindone, Councilmember

CITY OF CORONADO

Hon. Phil Monroe, Councilmember
(A) Hon. Frank Tierney, Councilmember
(A) Hon. Carrie Downey, Councilmember

CITY OF DEL MAR

Hon. Crystal Crawford, Deputy Mayor
(A) Hon. David Druker, Councilmember
(A) Hon. Henry Abarbanel, Councilmember

CITY OF EL CAJON

Hon. Mark Lewis, Mayor
(A) Hon. Jillian Hanson-Cox, Councilmember

CITY OF ENCINITAS

Hon. Christy Guerin, Deputy Mayor
(A) Hon. Jerome Stocks, Councilmember

CITY OF ESCONDIDO

Hon. Lori Holt Pfeiler, Mayor
(A) Hon. Ed Gallo, Mayor Pro Tem
(A) Hon. Ron Newman, Councilmember

CITY OF IMPERIAL BEACH

Hon. Patricia McCoy, Councilmember
(A) Hon. Diane Rose, Mayor
(A) Hon. Mayda Winter, Councilmember

CITY OF LA MESA

Hon. Art Madrid, Mayor
(A) Hon. Barry Jantz, Councilmember
(A) Hon. David Allan, Vice Mayor

CITY OF LEMON GROVE

Hon. Mary Teresa Sessom, Mayor
(A) Hon. Jerry Jones, Councilmember
(A) Hon. Jerry Selby, Councilmember

CITY OF NATIONAL CITY

Hon. Ron Morrison, Vice Mayor
(A) Hon. Frank Parra, Councilmember
(A) Hon. Louie Natividad, Councilmember

CITY OF OCEANSIDE

Hon. Jim Wood, Mayor
(A) Hon. Esther Sanchez, Deputy Mayor

CITY OF POWAY

Hon. Mickey Cafagna, Mayor
(A) Hon. Don Higginson, Councilmember
(A) Hon. Robert Emery, Deputy Mayor

CITY OF SAN DIEGO

Hon. Jim Madaffer, Mayor Pro Tem
Hon. Scott Peters, Councilmember
(A) Vacant

CITY OF SAN MARCOS

Hon. Pia Harris-Ebert, Vice Mayor
(A) Hon. Hal Martin, Councilmember
(A) Hon. Corky Smith, Mayor

CITY OF SANTEE

Hon. Jack Dale, Councilmember
(A) Hon. Hal Ryan, Councilmember
(A) Hon. Randy Voepel, Mayor

CITY OF SOLANA BEACH

Hon. Joe Kellejian, Councilmember
(A) Hon. David Powell, Deputy Mayor
(A) Hon. Lesa Heebner, Councilmember

CITY OF VISTA

Hon. Morris Vance, Mayor
(A) Hon. Judy Ritter, Councilmember
(A) Hon. Bob Campbell, Mayor Pro Tem

COUNTY OF SAN DIEGO

Hon. Pam Slater-Price, Chairwoman
(A) Hon. Dianne Jacob, Supervisor

IMPERIAL COUNTY

(Advisory Member)
Hon. Victor Carrillo, Supervisor
(A) Hon. David Ouzan, Mayor

CALIFORNIA DEPARTMENT OF TRANSPORTATION

(Advisory Member)
Will Kempton, Director
(A) Pedro Orso-Delgado, District 11 Director

METROPOLITAN TRANSIT SYSTEM

(Advisory Member)
Leon Williams, Chairman
(A) Hon. Jerry Rindone, Vice Chairman
(A) Hon. Bob Emery, Board Member

NORTH SAN DIEGO COUNTY TRANSIT DEVELOPMENT BOARD

(Advisory Member)
Hon. Jerome Stocks, Councilmember
(A) Hon. Judy Ritter, Councilmember
(A) Hon. Ed Gallo, Mayor Pro Tem

U.S. DEPARTMENT OF DEFENSE

(Advisory Member)
CAPT Daniel King, USN, CEC
Commander, Southwest Division
Naval Facilities Engineering Command
(A) CAPT Richard Gamble, USN, CEC

SAN DIEGO UNIFIED PORT DISTRICT

(Advisory Member)
William Hall, Commissioner
(A) Michael Bixler, Commissioner

SAN DIEGO COUNTY WATER AUTHORITY

(Advisory Member)
Marilyn Dailey, Commissioner
(A) Mark Muir, Commissioner

MEXICO

(Advisory Member)
Hon. Luis Cabrera C.
Consulate General of Mexico

As of August 24, 2005

CRIME IN THE SAN DIEGO REGION MID-YEAR 2005 STATISTICS

REGIONAL CRIME

Since 1980, SANDAG has been compiling and reporting regional crime statistics for San Diego County. This summary presents information regarding how many and what types of crimes were reported to local law enforcement in the first half of 2005 and how these numbers compare to prior years. These data are useful to local law enforcement agencies as they track the effectiveness of their prevention and response efforts on regional crime rates.

Violent Crime

- A total of 6,610 Part I violent crimes were reported to local law enforcement agencies in the region between January and June 2005. Part I violent crimes include homicide, rape, robbery, and assault (Table 1).
- The mid-year violent crime rate decreased to the lowest point in the past ten years. This annualized rate of 4.3 crimes per 1,000 residents was 9 percent lower than it was between January and June 2004 (when it was 4.7) and 40 percent lower than it was between January and June 1996 (when it was 7.2) (Figure 1).
- There were 43 homicides in the first half of 2005, considerably fewer (39% less) than the 71 reported in the first half of 2004 (Table 1). In 2004, 55 percent of homicides occurred in the first half of the year (not shown).
- Robbery was the only violent crime to increase in number from the first half of 2004 to 2005 (by 8%), as well as over the past five years (by 18%). In comparison, the number of rapes reported regionwide

decreased by 3 percent from 2004 and the number of aggravated assaults decreased by 12 percent.

- About half (52%) of the region's law enforcement agencies reported a lower mid-year violent crime rate in 2005, compared to 2004, 43 percent had a higher rate, and 5 percent (one agency) had the same rate (Table 3).¹

Property Crime

- A total of 48,621 property crimes were reported to local law enforcement agencies in the first half of 2005 (Table 1). Fifty-seven percent (57%) of these were larcenies, 26 percent were motor vehicle thefts, and 18 percent were burglaries.
- For the second year in a row, there was a slight decrease in the mid-year property crime rate, most recently from 32.2 in 2004 to 31.9 in 2005 (Figure 2).
- This 2005 mid-year property crime rate of 31.9 was lower than it was ten years ago (39.2), but higher than it was five years ago in 2001 (29.0) (Figure 2).
- While the total number of burglaries and larcenies decreased from mid-year 2004 to 2005 (by 6% and 2%, respectively), the number of motor vehicle thefts actually increased by 12 percent (from 11,160 vehicles stolen in 2004 to 12,502 in 2005) (Table 1).

¹ Four agencies had fewer than 30 violent crimes reported in one of the comparison years and are not included in these statistics.

- While the number of larcenies of property worth \$400 and less decreased from 2004 (by 7%), the number of larcenies of more valuable property actually increased (by 6%) (Table 1).
- More than two-thirds (68%) of the 25 reporting agencies had a one-year decrease in their property crime rates in 2005, similar to the region (Table 4).

Crime statistics for January through December 2005 are expected to be available in April 2006. If you have any questions about these numbers, please contact the Criminal Justice Research Division at (619) 699-6912. For more information about SANDAG's Criminal Justice Clearinghouse, please visit our Web site: www.sandag.org/cj.

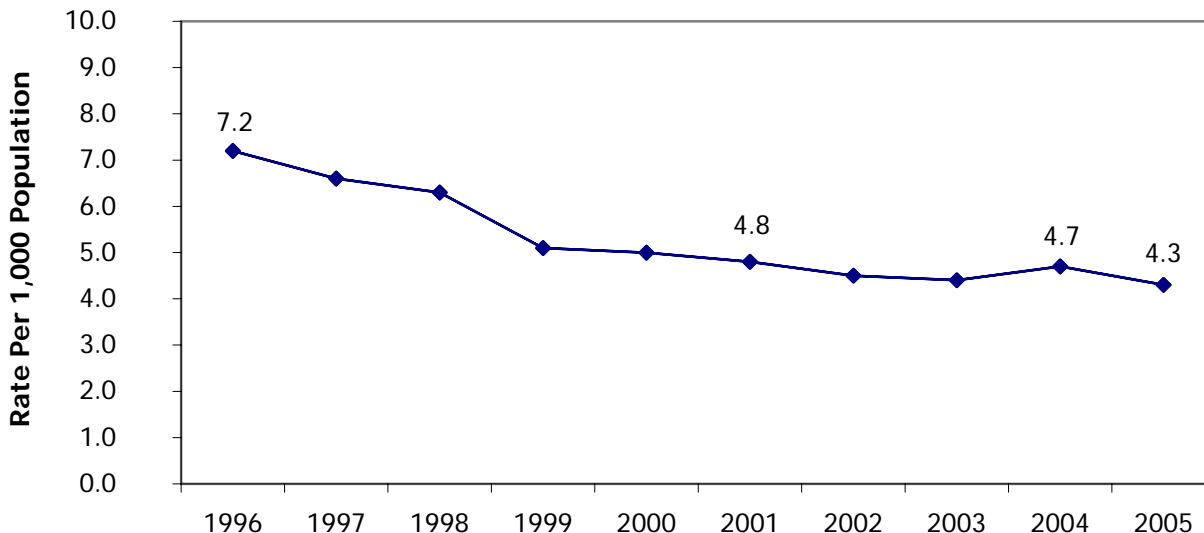
BACKGROUND

SANDAG's ability to analyze data and produce reports on crime trends for our region relies upon a cooperative agreement with each local law enforcement agency. SANDAG obtains crime data from every agency on a monthly basis, enabling us to present regional crime data in a timely manner.

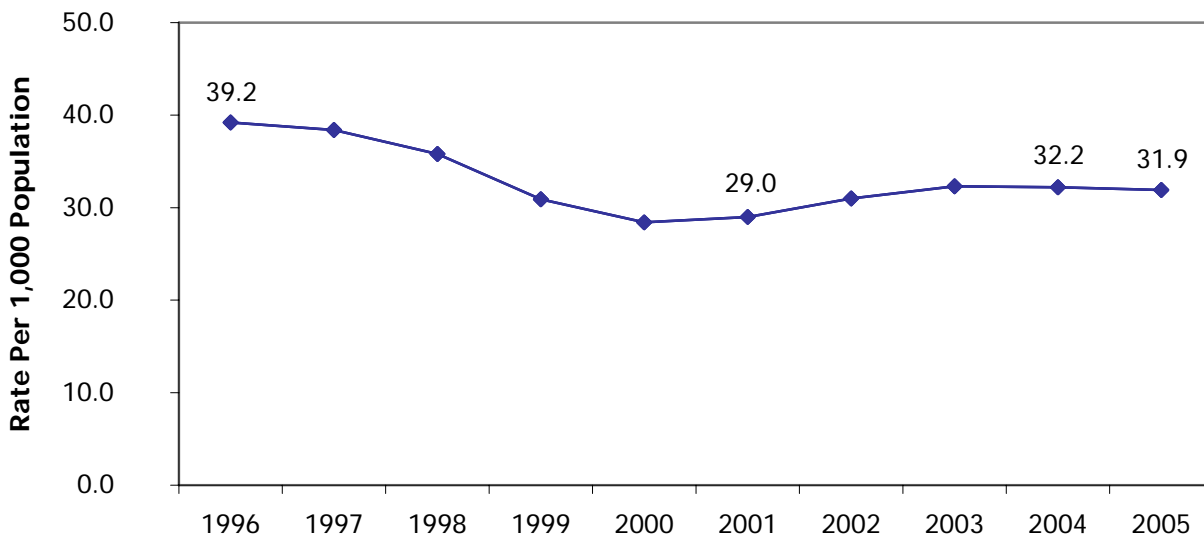
Per the FBI's Uniform Crime Reporting (UCR) standardized guidelines for law enforcement agencies across the country, crimes are categorized by the date of data entry, which may or may not reflect the day of occurrence. It should be noted that, while local law enforcement agencies strive to tabulate their statistics in a timely fashion, data entry delays sometimes occur, which may affect statistics. The mid-year crime rates per 1,000 residents are estimated by multiplying the number of crimes reported between January and June by two, and dividing that number by the population which has been divided by 1,000.

The statistics presented in this CJ Bulletin include crime rates and numbers for San Diego County and individual jurisdictions for the first half of 2005. Comparisons are made to prior years. The number and type of crimes that are reported can be influenced by several factors, including the degree of opportunity to commit crime in a given jurisdiction, which can be related to the amount of commercial land use and ease of access to the area.

**Figure 1
Mid-Year Violent Crime Rates
1996 - 2005**



**Figure 2
Mid-Year Property Crime Rates
1996 - 2005**



NOTES: The violent crime rates include reported homicides, rapes, robberies, and aggravated assaults. The property crime rates include reported burglaries, larceny thefts, and motor vehicle thefts. The numbers and types of crimes that are reported can be influenced by several factors, including the degree of opportunity to commit crime in a given jurisdiction, which can be related to the amount of commercial land use and ease of access to the area. The population estimates used to compute crime rates are based upon U.S. Census 2000 and 2005 California Department of Finance figures.

SOURCES: California Department of Finance; 2000 U.S. Census; SANDAG

Table 1
FBI Index Offenses
San Diego Region, January – June, 2001, 2004, and 2005

	2001	2004	2005	Change	
				2001-2005	2004-2005
Violent Crime					
Homicide	51	71	43	-16%	-39%
Rape	368	415	404	10%	-3%
Robbery	1,576	1,715	1,856	18%	8%
Aggravated Assault	4,881	4,867	4,307	-12%	-12%
Total Violent Crimes	6,876	7,068	6,610	-4%	-6%
Property Crime					
Burglary - Total	7,675	9,101	8,526	11%	-6%
Residential	4,324	5,150	4,814	11%	-7%
Non-Residential	3,351	3,951	3,712	11%	-6%
Larceny - Total	24,702	28,287	27,593	12%	-2%
Over \$400	8,244	9,566	10,134	23%	6%
\$400 and Under	16,458	18,721	17,459	6%	-7%
Motor Vehicle Theft	9,081	11,160	12,502	38%	12%
Total Property Crimes	41,458	48,548	48,621	17%	<1%
TOTAL FBI INDEX	48,334	55,616	55,231	14%	-1%
TOTAL CCI	23,632	27,329	27,638	17%	1%

NOTES: The FBI Index of Crimes includes homicide, rape, robbery, and aggravated assault in the violent category and burglary, theft, and motor vehicle theft in the property category. The California Crime Index (CCI) includes all FBI Index offenses except larceny theft. The numbers and types of crimes that are reported can be influenced by several factors, including the degree of opportunity to commit crime in a given jurisdiction, which can be related to the amount of commercial land use and ease of access to the area.

SOURCE: SANDAG

Table 2
Annualized FBI Index Crime Rates
Jurisdictions and Other Areas
San Diego Region, January – June 2001, 2004, and 2005

	2001	2004	2005	Change	
				2001-2005	2004-2005
Carlsbad	24.1	26.9	29.3	22%	9%
Chula Vista	42.0	37.2	37.5	-11%	1%
Coronado	17.5	22.2	19.6	12%	-12%
El Cajon	42.7	51.5	49.5	16%	-4%
Escondido	37.4	42.8	41.2	10%	-4%
La Mesa	37.6	44.1	41.9	11%	-5%
National City	46.7	52.9	49.8	7%	-6%
Oceanside	33.2	43.4	38.1	15%	-12%
San Diego	38.8	40.4	40.4	4%	0%
Sheriff - Total	22.0	26.8	25.4	15%	-5%
Del Mar	34.6	48.9	52.4	51%	7%
Encinitas	22.0	23.9	20.4	-7%	-15%
Imperial Beach	36.1	40.3	31.9	-12%	-21%
Lemon Grove	33.7	44.8	33.4	-1%	-25%
Poway	18.6	17.6	16.6	-11%	-6%
San Marcos	22.3	23.6	22.8	2%	-3%
Santee	24.9	26.1	27.8	12%	7%
Solana Beach	20.6	24.2	23.1	12%	-5%
Vista	23.5	34.1	32.9	40%	-4%
Unincorporated	19.9	25.3	24.5	23%	-3%
Alpine	24.2	25.8	26.7	10%	3%
Fallbrook	19.3	27.5	29.9	55%	9%
Lakeside	18.1	27.5	29.0	60%	5%
Ramona	17.0	17.9	15.9	-6%	-11%
Spring Valley	24.4	29.8	28.2	16%	-5%
Valley Center	18.4	26.4	21.4	16%	-19%
Other Unincorporated	18.7	23.3	21.7	16%	-7%
TOTAL FBI INDEX	33.8	36.9	36.2	7%	-2%

NOTES: The FBI Index includes homicide, rape, robbery, and aggravated assault in the violent category and burglary, larceny, and motor vehicle theft in the property category. The numbers and types of crimes that are reported can be influenced by several factors, including the degree of opportunity to commit crime in a given jurisdiction, which can be related to the amount of commercial land use and ease of access to the area. The population estimates used to compute crime rates are based upon Census 2000 and 2005 California Department of Finance figures. "Other Unincorporated" equals the Sheriff's unincorporated area minus Alpine, Fallbrook, Lakeside, Ramona, Spring Valley, and Valley Center. Updates to the 2005 beat population estimates produced by SANDAG and used to compute populations and crime rates for those six areas had not been calculated by SANDAG in time to be included in this report.

SOURCES: California Department of Finance; 2000 U.S. Census; SANDAG

Table 3
Annualized FBI Index Violent Crime Rates
Jurisdictions and Other Areas
San Diego Region, January – June 2001, 2004, and 2005

	2001	2004	2005	Change	
				2001-2005	2004-2005
Carlsbad	2.2	3.0	2.7	23%	-10%
Chula Vista	4.8	3.9	4.1	-15%	5%
Coronado	1.7	1.2	0.7	--	--
El Cajon	6.8	5.9	5.4	-21%	-8%
Escondido	4.1	4.6	5.1	24%	11%
La Mesa	3.1	3.1	3.5	13%	13%
National City	8.1	6.9	7.1	-12%	3%
Oceanside	5.7	6.3	5.1	-11%	-19%
San Diego	5.8	5.5	4.9	-16%	-11%
Sheriff - Total	3.4	3.6	3.3	-3%	-8%
Del Mar	3.1	1.3	0.9	--	--
Encinitas	2.5	2.3	2.2	-12%	-4%
Imperial Beach	5.2	7.4	5.2	0%	-30%
Lemon Grove	4.0	6.7	4.5	13%	-33%
Poway	2.1	1.3	1.3	-38%	0%
San Marcos	3.4	3.2	3.0	-12%	-6%
Santee	4.1	2.9	3.2	-22%	10%
Solana Beach	3.2	1.5	1.3	--	--
Vista	3.9	5.0	5.1	31%	2%
Unincorporated	3.3	3.5	3.3	0%	-6%
Alpine	3.3	3.2	2.9	-12%	--
Fallbrook	2.9	2.5	3.5	21%	40%
Lakeside	2.9	2.6	3.4	17%	31%
Ramona	3.1	2.4	2.6	-16%	8%
Spring Valley	3.4	5.3	3.9	15%	-26%
Valley Center	4.6	3.7	3.2	-30%	-14%
Other Unincorporated	3.3	3.6	3.2	-3%	-11%
TOTAL FBI INDEX VIOLENT	4.8	4.7	4.3	-10%	-9%

NOTES: The FBI Index includes homicide, rape, robbery, and aggravated assault in the violent category. The numbers and types of crimes that are reported can be influenced by several factors, including the degree of opportunity to commit crime in a given jurisdiction, which can be related to the amount of commercial land use and ease of access to the area. The population estimates used to compute crime rates are based upon Census 2000 and 2005 California Department of Finance figures. "Other Unincorporated" equals the Sheriff's unincorporated area minus Alpine, Fallbrook, Lakeside, Ramona, Spring Valley, and Valley Center. Updates to the 2005 beat population estimates produced by SANDAG and used to compute populations and crime rates for those six areas had not been calculated by SANDAG in time to be included in this report.

SOURCES: California Department of Finance; 2000 U.S. Census; SANDAG

Table 4
Annualized FBI Index Property Crime Rates
Jurisdictions and Other Areas
San Diego Region, January – June 2001, 2004, and 2005

	2001	2004	2005	Change	
				2001-2005	2004-2005
Carlsbad	21.8	23.9	26.6	22%	11%
Chula Vista	37.2	33.3	33.4	-10%	<1%
Coronado	15.9	21.0	18.9	19%	-10%
El Cajon	35.9	45.6	44.1	23%	-3%
Escondido	33.3	38.2	36.1	8%	-6%
La Mesa	34.5	40.9	38.4	11%	-6%
National City	38.6	46.0	42.7	11%	-7%
Oceanside	27.5	37.1	32.9	20%	-11%
San Diego	33.0	34.9	35.5	8%	2%
Sheriff - Total	18.6	23.2	22.1	19%	-5%
Del Mar	31.4	47.5	51.5	64%	8%
Encinitas	19.5	21.7	18.3	-6%	-16%
Imperial Beach	30.9	32.9	26.7	-14%	-19%
Lemon Grove	29.7	38.0	28.9	-3%	-24%
Poway	16.5	16.3	15.4	-7%	-6%
San Marcos	18.9	20.4	19.8	5%	-3%
Santee	20.8	23.2	24.6	18%	6%
Solana Beach	17.4	22.7	21.8	25%	-4%
Vista	19.6	29.1	27.8	42%	-4%
Unincorporated	16.6	21.7	21.2	28%	-2%
Alpine	20.9	22.6	23.8	14%	5%
Fallbrook	16.5	25.0	26.4	60%	6%
Lakeside	15.2	24.9	25.7	69%	3%
Ramona	13.8	15.4	13.3	-4%	-14%
Spring Valley	21.0	24.5	24.3	16%	-1%
Valley Center	13.8	22.7	18.2	32%	-20%
Other Unincorporated	15.4	19.7	18.5	20%	-6%
TOTAL FBI INDEX PROPERTY	29.0	32.2	31.9	10%	-1%

NOTES: The FBI Index includes burglary, larceny, and motor vehicle theft in the property category. The numbers and types of crimes that are reported can be influenced by several factors, including the degree of opportunity to commit crime in a given jurisdiction, which can be related to the amount of commercial land use and ease of access to the area. The population estimates used to compute crime rates are based upon Census 2000 and 2005 California Department of Finance figures. "Other Unincorporated" equals the Sheriff's unincorporated area minus Alpine, Fallbrook, Lakeside, Ramona, Spring Valley, and Valley Center. Updates to the 2005 beat population estimates produced by SANDAG and used to compute populations and crime rates for those six areas had not been calculated by SANDAG in time to be included in this report.

SOURCES: California Department of Finance; 2000 U.S. Census; SANDAG

Table 5
FBI Index Crimes by Jurisdiction
San Diego Region, January – June 2001, 2004, and 2005

	2001	2004	2005	Change	
				2001-2005	2004-2005
Carlsbad	1,001	1,246	1,393	39%	12%
Chula Vista	3,811	3,880	4,076	7%	5%
Coronado	210	293	265	26%	-10%
El Cajon	2,053	2,508	2,419	18%	-4%
Escondido	2,536	3,000	2,912	15%	-3%
La Mesa	1,041	1,232	1,174	13%	-5%
National City	1,306	1,589	1,588	22%	<-1%
Oceanside	2,723	3,748	3,331	22%	-11%
San Diego	24,061	26,082	26,390	10%	1%
Sheriff - Total	8,718	11,135	10,574	21%	-5%
Del Mar	77	111	119	55%	7%
Encinitas	650	747	641	-1%	-14%
Imperial Beach	494	558	442	-11%	-21%
Lemon Grove	425	571	426	<1%	-25%
Poway	455	444	421	-7%	-5%
San Marcos	643	794	834	30%	5%
Santee	666	704	757	14%	8%
Solana Beach	136	162	155	14%	-4%
Vista	1,071	1,599	1,547	44%	-3%
Unincorporated	4,101	5,445	5,232	28%	-4%
Alpine	326	365	378	16%	4%
Fallbrook	451	686	747	66%	9%
Lakeside	470	744	784	67%	5%
Ramona	281	317	282	<1%	-11%
Spring Valley	841	1,056	1,000	19%	-5%
Valley Center	192	300	243	27%	-19%
Other Unincorporated	1,540	1,977	1,798	17%	-9%
California Highway Patrol	81	63	100	23%	59%
Calif. State University San Marcos	9	27	30	--	--
San Diego State University	328	299	359	9%	20%
University of California San Diego	237	304	418	76%	38%
San Diego Harbor Police	172	166	157	-9%	-5%
State Parks and Recreation	47	44	45	-4%	2%
TOTAL FBI	48,334	55,616	55,231	14%	-1%

NOTES: Percent changes are not presented if either comparison number is 30 or less. The FBI Index includes homicide, rape, robbery, and aggravated assault in the violent category and burglary, larceny, and motor vehicle theft in the property category. The numbers and types of crimes that are reported can be influenced by several factors, including the degree of opportunity to commit crime in a given jurisdiction, which can be related to the amount of commercial land use and ease of access to the area. "Other Unincorporated" equals the Sheriff's unincorporated area minus Alpine, Fallbrook, Lakeside, Ramona, Spring Valley, and Valley Center.

SOURCE: SANDAG

Table 6
Violent Crimes by Jurisdiction
San Diego Region, January – June 2001, 2004, and 2005

	2001	2004	2005	Change	
				2001-2005	2004-2005
Carlsbad	93	139	127	37%	-9%
Chula Vista	436	410	444	2%	8%
Coronado	20	16	10	--	--
El Cajon	328	288	263	-20%	-9%
Escondido	279	323	358	28%	11%
La Mesa	87	88	99	14%	13%
National City	227	208	225	-1%	8%
Oceanside	468	544	447	-4%	-18%
San Diego	3,572	3,530	3,219	-10%	-9%
Sheriff - Total	1,331	1,489	1,381	4%	-7%
Del Mar	7	3	2	--	--
Encinitas	74	71	68	-8%	-4%
Imperial Beach	71	103	72	1%	-30%
Lemon Grove	50	86	57	14%	-34%
Poway	51	33	32	-37%	-3%
San Marcos	97	109	110	13%	1%
Santee	109	79	86	-21%	9%
Solana Beach	21	10	9	--	--
Vista	178	235	238	34%	1%
Unincorporated	673	760	707	5%	-7%
Alpine	44	45	41	-7%	-9%
Fallbrook	67	62	87	30%	40%
Lakeside	75	71	91	21%	28%
Ramona	52	43	46	-12%	7%
Spring Valley	117	188	139	19%	-26%
Valley Center	48	42	36	-25%	-14%
Other Unincorporated	270	309	267	-1%	-14%
California Highway Patrol	5	5	13	--	--
Calif. State University San Marcos	0	1	1	--	--
San Diego State University	11	13	11	--	--
University of California San Diego	3	3	5	--	--
San Diego Harbor Police	11	10	6	--	--
State Parks and Recreation	5	1	1	--	--
TOTAL VIOLENT OFFENSES	6,876	7,068	6,610	-4%	-6%

NOTES: Percent changes are not presented if either comparison number is 30 or less. The FBI Index includes homicide, rape, robbery, and aggravated assault in the violent category. The numbers and types of crimes that are reported can be influenced by several factors, including the degree of opportunity to commit crime in a given jurisdiction, which can be related to the amount of commercial land use and ease of access to the area. "Other Unincorporated" equals the Sheriff's unincorporated area minus Alpine, Fallbrook, Lakeside, Ramona, Spring Valley, and Valley Center.

SOURCE: SANDAG

Table 7
Property Crimes by Jurisdiction
San Diego Region, January – June 2001, 2004, and 2005

	2001	2004	2005	Change	
				2001-2005	2004-2005
Carlsbad	908	1,107	1,266	39%	14%
Chula Vista	3,375	3,470	3,632	8%	5%
Coronado	190	277	255	34%	-8%
El Cajon	1,725	2,220	2,156	25%	-3%
Escondido	2,257	2,677	2,554	13%	-5%
La Mesa	954	1,144	1,075	13%	-6%
National City	1,079	1,381	1,363	26%	-1%
Oceanside	2,255	3,204	2,884	28%	-10%
San Diego	20,489	22,552	23,171	13%	3%
Sheriff - Total	7,387	9,646	9,193	24%	-5%
Del Mar	70	108	117	67%	8%
Encinitas	576	676	573	-1%	-15%
Imperial Beach	423	455	370	-13%	-19%
Lemon Grove	375	485	369	-2%	-24%
Poway	404	411	389	-4%	-5%
San Marcos	546	685	724	33%	6%
Santee	557	625	671	20%	7%
Solana Beach	115	152	146	27%	-4%
Vista	893	1,364	1,309	47%	-4%
Unincorporated	3,428	4,685	4,525	32%	-3%
Alpine	282	320	337	20%	5%
Fallbrook	384	624	660	72%	6%
Lakeside	395	673	693	75%	3%
Ramona	229	274	236	3%	-14%
Spring Valley	724	868	861	19%	-1%
Valley Center	144	258	207	44%	-20%
Other Unincorporated	1,270	1,668	1,531	21%	-8%
California Highway Patrol	76	58	87	14%	50%
Calif. State University San Marcos	9	26	29	--	--
San Diego State University	317	286	348	10%	22%
University of California San Diego	234	301	413	77%	37%
San Diego Harbor Police	161	156	151	-6%	-3%
State Parks and Recreation	42	43	44	5%	2%
TOTAL PROPERTY OFFENSES	41,458	48,548	48,621	17%	<1%

NOTES: Percent changes are not presented if either comparison number is 30 or less. The FBI Index includes homicide, rape, robbery, and aggravated assault in the violent category and burglary, larceny, and motor vehicle theft in the property category. The numbers and types of crimes that are reported can be influenced by several factors, including the degree of opportunity to commit crime in a given jurisdiction, which can be related to the amount of commercial land use and ease of access to the area. "Other Unincorporated" equals the Sheriff's unincorporated area minus Alpine, Fallbrook, Lakeside, Ramona, Spring Valley, and Valley Center.

SOURCE: SANDAG

Table 8
Number of Crimes by Offense
San Diego Region, January - June 1996 - 2005

	Homicide	Rape	Robbery	Aggravated Assault	Total Violent Crime	Residential Burglary	Non-Residential Burglary	Total Burglary	Larceny Over \$400	Larceny \$400 & Under	Total Larceny	Motor Vehicle Theft	Total Property Crime	FBI Crime Index	Calif. Crime Index	Population
1996	85	376	2,811	6,218	9,490	6,497	4,228	10,725	8,849	21,569	30,418	10,279	51,422	60,912	30,494	2,621,100
1997	59	417	2,414	5,869	8,759	6,436	4,175	10,611	8,747	21,788	30,535	9,786	50,932	59,691	29,156	2,653,400
1998	39	383	2,216	5,840	8,478	5,559	3,920	9,479	8,467	20,468	28,935	9,985	48,399	56,877	27,942	2,702,800
1999	45	371	1,714	4,936	7,066	4,290	3,337	7,627	8,071	18,352	26,423	8,461	42,511	49,577	23,154	2,751,000
2000	38	392	1,744	4,832	7,006	4,620	3,277	7,897	7,621	16,278	23,899	8,204	40,000	47,006	23,107	2,813,833
2001	51	368	1,576	4,881	6,876	4,324	3,351	7,675	8,244	16,458	24,702	9,081	41,458	48,334	23,632	2,863,657
2002	42	386	1,554	4,659	6,641	5,052	3,985	9,037	9,225	17,351	26,576	9,590	45,203	51,844	25,268	2,920,010
2003	57	449	1,660	4,438	6,604	5,350	4,466	9,816	8,851	17,961	26,812	11,308	47,936	54,540	27,728	2,971,805
2004	71	415	1,715	4,867	7,068	5,150	3,951	9,101	9,566	18,721	28,287	11,160	48,548	55,616	27,329	3,013,014
2005	43	404	1,856	4,307	6,610	4,814	3,712	8,526	10,134	17,459	27,593	12,502	48,621	55,231	27,638	3,051,280

SOURCE: SANDAG

**Table 9
Number of Crimes by Offense, by Jurisdiction
San Diego Region, January – June 2005**

	Homicide	Rape	Robbery	Aggravated Assault	Residential Burglary	Non-Residential Burglary	Total Burglary	Larceny Over \$400	Larceny \$400 and Under	Total Larceny	Motor Vehicle Theft	Arson	FBI Crime Index	Calif. Crime Index
Carlsbad	0	6	46	75	140	119	259	279	588	867	140	4	1,393	526
Chula Vista	2	31	165	246	300	308	608	653	1,199	1,852	1,172	11	4,076	2,224
Coronado	0	2	4	4	51	10	61	61	99	160	34	1	265	105
El Cajon	1	21	83	158	150	250	400	352	794	1,146	610	20	2,419	1,273
Escondido	1	21	89	247	198	206	404	527	1,044	1,571	579	14	2,912	1,341
La Mesa	0	5	48	46	74	72	146	221	439	660	269	1	1,174	514
National City	3	9	87	126	64	126	190	185	568	753	420	4	1,588	835
Oceanside	3	39	110	295	366	175	541	565	1,422	1,987	356	12	3,331	1,344
San Diego	23	185	909	2,102	2,259	1,433	3,692	5,057	7,578	12,635	6,844	99	26,390	13,755
Sheriff-Total	10	83	304	984	1,193	976	2,169	1,942	3,150	5,092	1,932	54	10,574	5,482
Del Mar	0	0	0	2	10	10	20	40	42	82	15	0	119	37
Encinitas	1	5	14	48	87	79	166	137	182	319	88	3	641	322
Imperial Beach	0	4	20	48	39	39	78	52	109	161	131	1	442	281
Lemon Grove	1	0	23	33	40	43	83	57	112	169	117	1	426	257
Poway	0	4	5	23	35	46	81	90	168	258	50	5	421	163
San Marcos	0	7	29	74	54	91	145	148	311	459	120	5	834	375
Santee	0	8	12	66	63	63	126	148	281	429	116	2	757	328
Solana Beach	0	1	4	4	28	16	44	40	39	79	23	0	155	76
Vista	1	7	85	145	174	151	325	236	517	753	231	14	1,547	794
Unincorporated	7	47	112	541	663	438	1,101	994	1,389	2,383	1,041	23	5,232	2,849
Alpine	1	2	8	30	36	42	78	95	102	197	62	1	378	181
Fallbrook	0	6	19	62	136	80	216	125	235	360	84	4	747	387
Lakeside	0	7	15	69	84	65	149	153	222	375	169	0	784	409
Ramona	0	5	4	37	28	25	53	66	80	146	37	0	282	136
Spring Valley	4	9	32	94	121	55	176	162	253	415	270	0	1,000	585
Valley Center	1	5	3	27	31	34	65	46	50	96	46	5	243	147
Other Unincorporated	1	13	31	222	227	137	364	347	447	794	373	13	1,798	1,004
California Highway Patrol	0	0	1	12	1	4	5	2	18	20	62	0	100	80
Calif. State University San Marcos	0	0	0	1	1	5	6	5	17	22	1	0	30	8
San Diego State University	0	2	3	6	6	5	11	119	171	290	47	0	359	69
University of California San Diego	0	0	3	2	11	15	26	84	269	353	34	1	418	65
San Diego Harbor Police	0	0	4	2	0	3	3	72	76	148	0	1	157	9
State Parks and Recreation	0	0	0	1	0	5	5	10	27	37	2	0	45	8
TOTAL	43	404	1,856	4,307	4,814	3,712	8,526	10,134	17,459	27,593	12,502	222	55,231	27,638

SOURCE: SANDAG

Table 10
Population by Jurisdiction and Other Areas
San Diego Region, 2001, 2004, and 2005

	2001	2004	2005	Change	
				2001-2005	2004-2005
Carlsbad	83,242	92,719	95,146	14%	3%
Chula Vista	181,453	208,510	217,543	20%	4%
Coronado	23,974	26,405	26,973	13%	2%
El Cajon	96,150	97,359	97,703	2%	<1%
Escondido	135,650	140,088	141,350	4%	1%
La Mesa	55,353	55,885	55,983	1%	<1%
National City	55,928	60,027	63,773	14%	6%
Oceanside	164,256	172,800	175,085	7%	1%
San Diego	1,241,788	1,291,701	1,305,736	5%	1%
Sheriff - Total	793,681	829,912	833,729	5%	<1%
Del Mar	4,452	4,543	4,543	2%	0%
Encinitas	59,075	62,401	62,774	6%	1%
Imperial Beach	27,347	27,698	27,710	1%	<1%
Lemon Grove	25,219	25,517	25,531	1%	<1%
Poway	48,967	50,483	50,675	3%	<1%
San Marcos	57,683	67,226	73,054	27%	9%
Santee	53,535	53,864	54,476	2%	1%
Solana Beach	13,203	13,392	13,400	1%	<1%
Vista	91,228	93,773	94,109	3%	<1%
Unincorporated	412,972	431,015	427,457	4%	-1%
Alpine	26,992	28,347	28,347	5%	n/a
Fallbrook	46,622	49,918	49,918	7%	n/a
Lakeside	52,037	54,013	54,013	4%	n/a
Ramona	33,126	35,515	35,515	7%	n/a
Spring Valley	68,928	70,957	70,957	3%	n/a
Valley Center	20,857	22,761	22,761	9%	n/a
Other Unincorporated	164,410	169,504	165,946	1%	-2%
TOTAL	2,863,657	3,013,014	3,051,280	7%	1%

NOTES: Except for Alpine, Fallbrook, Lakeside, Ramona, Spring Valley, and Valley Center, population estimates are based upon January 1, 2005, California Department of Finance (DOF) figures and have been adjusted to reflect the 2000 Census. Data required to calculate 2005 populations for the cities mentioned will be released in October 2005, at which time the related crime rates will be re-computed and available to the public upon request. "Other Unincorporated" equals the Sheriff's unincorporated area minus Alpine, Fallbrook, Lakeside, Ramona, Spring Valley, and Valley Center. Camp Pendleton population is excluded from Sheriff's Unincorporated area and included in the region total.

SOURCES: California Department of Finance; 2000 U.S. Census; SANDAG