

Strategy Agenda Flash Report

4th Quarter FY08-09



The HHS Strategy Agenda: A Five year Strategic Plan was developed based on input from community advisory committees and staff. This flash report highlights Agency measures selected for the quarter that communicate progress across mission critical services to advance County goals. Commentary, submitted by program staff, is reviewed and approved by the lead Agency executive.

Color Coding: 100% or more above target (Green) 75% - 99% of Target (Yellow) Below 75% of Target (Red)

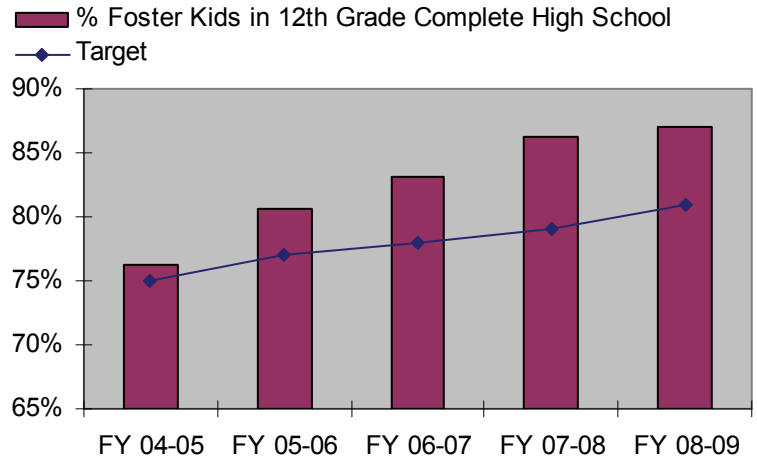
Target Type: ▲ Operational Plan Target ↑ Quality First Target ■ Operational Incentive Plan Target

PREVENTION

Foster Youth in 12th Grade Completing High School

Goal	Performance	Color
81%	87%	▲ ■

As of the end of FY08-09, 86.9% (167 of 192) of foster youth in the 12th grade achieved high school completion (diploma, certificate or equivalent). Performance on this measure exceeded the year-end goal of 81%. By increasing high school completion, foster youth are better prepared to transition to adulthood.

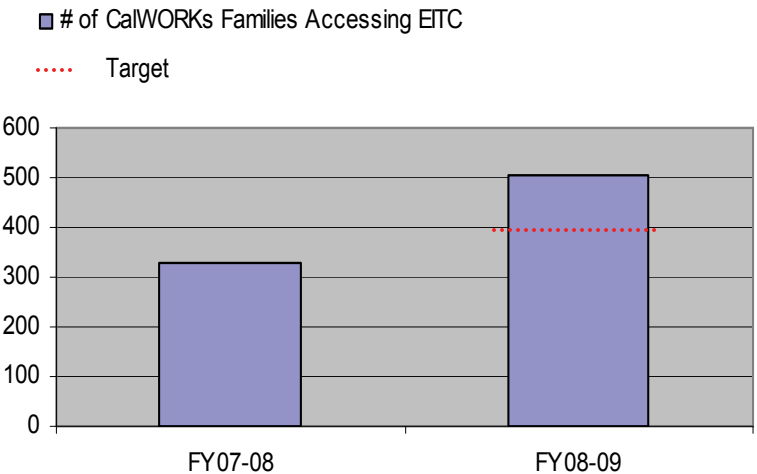


ACCESS

CalWORKS Families Accessing the Earned Income Tax Credit (EITC)

Goal	Performance	Color
20% increase	52.7% increase	▲ ■

There was a increase of 52.7% (from 330 to 504) between FY07-08 and FY08-09 in the number of CalWORKs families accessing the Earned Income Tax Credit (EITC). Community Action Partnership (CAP) and contracted Family Self Sufficiency (FSS) Providers worked with CalWORKs and FRC staff to encourage referrals to the Volunteer Income Tax Assistance Program (VITA), which provided free tax return preparation assistance to families. CAP and FSS attended all-staff meetings at 5 FRCs and met with CalWORKs staff to train county staff on the VITA program.

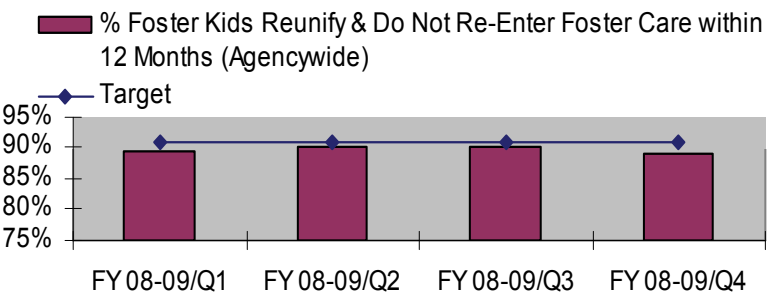


PROTECTION

Foster Kids Reunify & Do Not Re-Enter Foster Care within the Next 12 Months

Goal	Performance	Color
91%	89.1%	▲ ■

As of the end of FY08-09, 89.1% (1,320 of 1,481) of children did not re-enter foster care within 12 months of reunification. Although we did not meet this year's goal of 91%, San Diego County's re-entry rate continues to be one of the lowest among California's larger counties. By decreasing the percentage of children who re-enter foster care, the Agency promotes family stability.



Percentage	Actual	Color
N. Inland Region	90.80%	■
N. Coastal Region	90.50%	■
N. Central Region	90.40%	■
E. Region	85.10%	■
C. Region	88.70%	■
S. Region	91.70%	■
County Child Welfare Services	86.50%	■

CARE & TREATMENT

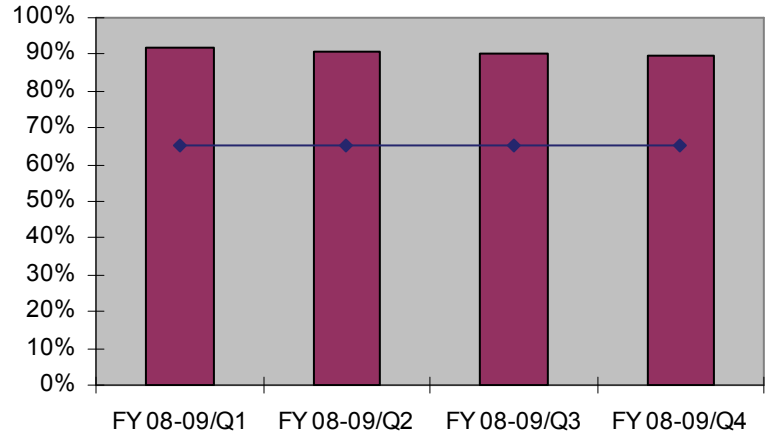
Employable Adults Completing Alcohol & Drug Treatment Employed or in Employment Preparation Activities

Goal	Performance	Color
65%	89.5%	■

As of the fourth quarter of FY08-09, 89.5% (2,626 of 2,935) employable adults completing treatment were employed or enrolled in an employment preparation activity, exceeding the target of 65%. Alcohol and Drug Services has done well with the measure throughout the year, with cumulative percentages demonstrating an achievement of over 89% each quarter.

■ % Employable Adults Completing Treatment Employed or in Employment Preparation Activities

◆ Target



PREPAREDNESS & RESPONSE

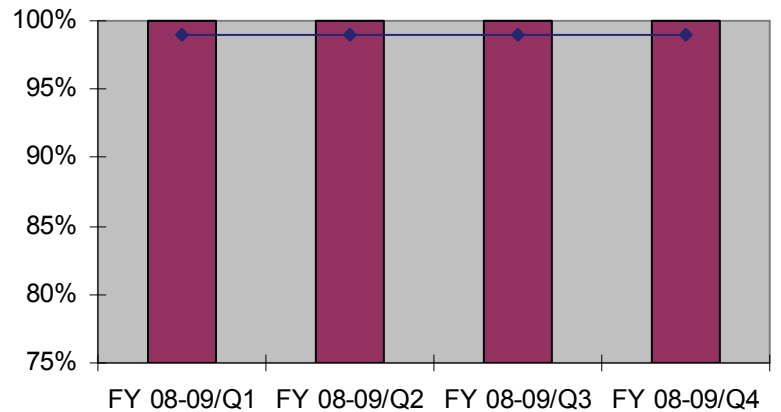
Communicable Disease Case Investigations Initiated Within 24 Hours

Goal	Performance	Color
99%	100%	▲ ■

During the fourth quarter of FY08-09, in spite of all of the time spent on the Pandemic (H1N1) influenza situation by the Community Epidemiology Branch, 100% of the 20 reported cases of selected communicable diseases had investigations initiated within 24 hours of receipt. Prompt public health action is important to identifying the source and limiting the spread of disease.

■ % Communicable Disease Case Investigations Initiated Within 24 Hours

◆ Target



COMMUNICATION

School Districts Provided with Technical Assistance Implementing Wellness Policies

Goal	Performance	Color
6	12	▲ ■

From July 2008 through June 2009, 12 schools districts were provided with technical assistance on implementing policies to reduce childhood obesity. This has surpassed the target of 6 for FY08-09. Being overweight exposes children to serious health problems. As children age, the health problems they experience will result in growing costs for medical care and lost productivity. School environments can serve as a primary influencer on eating and physical activity habits. Implementation of School Wellness Policies are a critical piece in creating healthy environments.

■ # of School Districts Provided with Technical Assistance Implementing Wellness Policies

◆ Target

