

# Strategy Agenda Flash Report

## 3rd Quarter FY08-09



The **HHSA Strategy Agenda: A Five year Strategic Plan** was developed based on input from community advisory committees and staff. This flash report highlights Agency measures selected for the quarter that communicate progress across mission critical services to advance County goals. Commentary, submitted by program staff, is reviewed and approved by the lead Agency executive.

**Color Coding:** 100% or more above target (Green), 75% - 99% of Target (Yellow), Below 75% of Target (Red)

**Target Type:** ▲ Operational Plan Target, ↑ Quality First Target, ■ Operational Incentive Plan Target

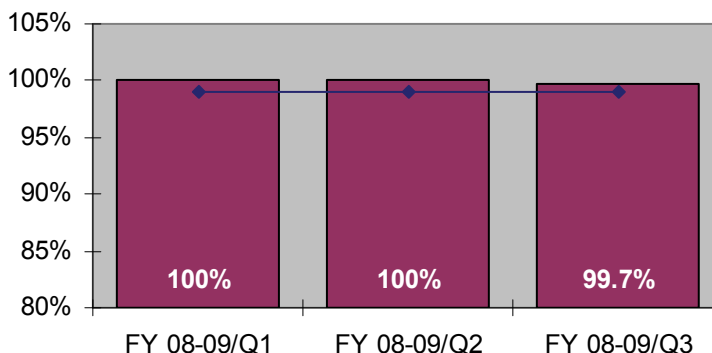
### PREVENTION

Kids Immunized When Vaccine is Due and Available

| Goal | Performance | Color |
|------|-------------|-------|
| 99%  | 99.7%       |       |

San Diego County's Regional Public Health Centers strive to improve the quality of immunization service for children age 0-24 months by immunizing at least 99% of the children they serve that are eligible for a vaccine when it is due and available. As of the third quarter, Public Health Centers immunized 99.7% (6,747 of 6,764) of children eligible for a vaccine when it was due and available in FY 08-09. Immunization helps prevent the spread of childhood communicable disease and keeps children healthy.

■ % of Kids Immunized When Vaccine is Due and Available  
◆ Target



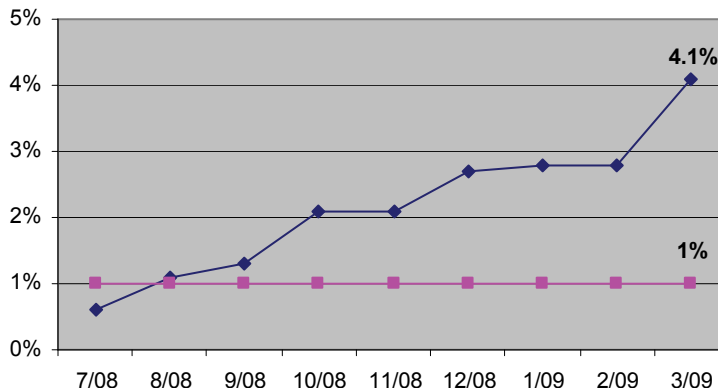
### ACCESS

Increase in Kids Enrolled in the Medi-Cal and Healthy Families Programs

| Goal        | Performance   | Color |
|-------------|---------------|-------|
| 1% increase | 4.1% increase |       |

As of March 2009, the current enrollment in Medi-Cal and Healthy Families was 242,616; this represents an increase of 4.1% or 9,579 children over the June 2008 baseline. The goal of a 1% increase (2,330 additional children) has been surpassed and now this level of enrollment must be maintained through the end of FY 08-09. Insured children are healthier, at less risk of suffering from preventable illnesses and are better able to access needed health care services.

◆ % Increase in Kids Enrolled in Healthy Families and Medi-Cal  
■ Target



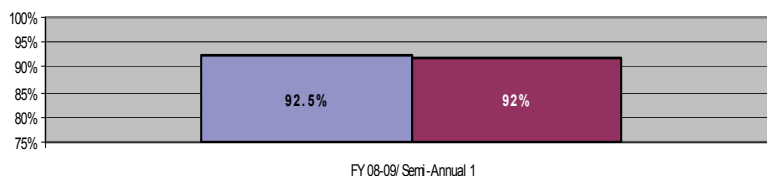
### PROTECTION

Kids Without Another Substantiated Allegation of Abuse or Neglect

| Goal | Performance | Color |
|------|-------------|-------|
| 92%  | 92.5%       |       |

At the end of the second quarter, 92.5% (3,494 of 3,776) of children with a substantiated allegation of neglect or abuse **did not** have another substantiated allegation within 6 months in FY 08-09. The countywide performance on the measure is better than the goal of 92%. By decreasing the reoccurrence of abuse and neglect, the Agency helps protect children from dangerous conditions.

■ % of Kids Without Subsequent Substantiated Allegation of Abuse and/or Neglect  
Countywide  
■ Target



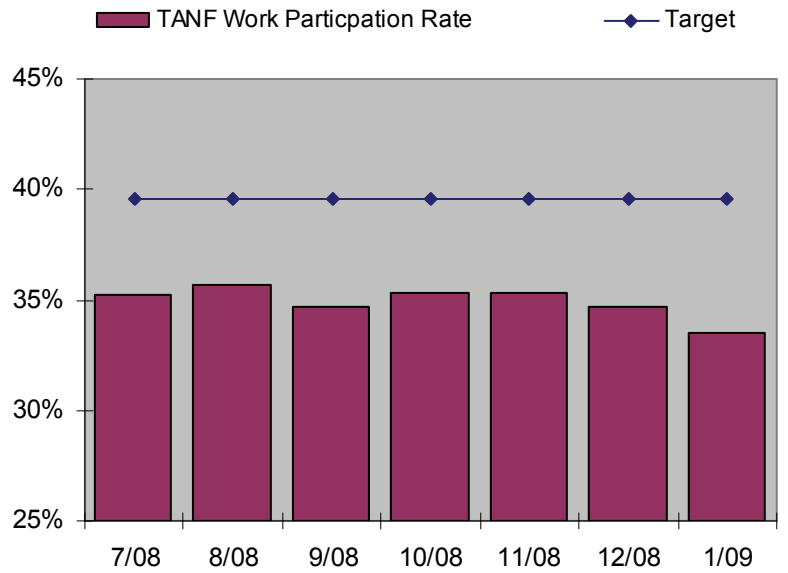
| Location                      | Actual | Target | Color |
|-------------------------------|--------|--------|-------|
| County Child Welfare Services | 88.5%  | 92%    |       |
| N. Inland Region              | 91.6%  | 92%    |       |
| N. Coastal Region             | 94.1%  | 92%    |       |
| N. Central Region             | 94.7%  | 92%    |       |
| East Region                   | 92%    | 92%    |       |
| Central Region                | 91.7%  | 92%    |       |
| South Region                  | 93.2%  | 92%    |       |

## TREATMENT & CARE

### Temporary Assistance to Needy Families (TANF) Work Participation Rate

| Goal  | Performance | Color |
|-------|-------------|-------|
| 39.6% | 33.5%       |       |

The TANF Work Participation Rate (WPR) is a federal measure of the County's and State's ability to engage welfare recipients in meaningful Welfare-to-Work (WTW) activities that lead to self-sufficiency. As of January 2009, San Diego County is achieving a 33.5% WPR. During this time of recession, WTW participants are competing for jobs and hours with a large number of unemployed and dislocated workers. Strategies to increase the participation rate include developing work experience partnerships with the community to provide basic job skill training for WTW participants and developing a subsidized wage program that will provide on-the-job training and potential employment.



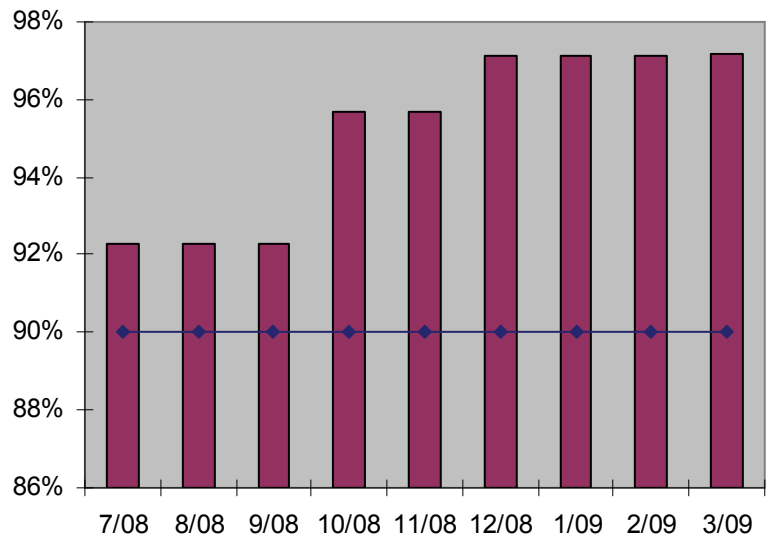
## PREPAREDNESS & RESPONSE

### Clients and Real Property Under Auspices of Public Administrator/ Public Guardian Accurately Mapped for Emergency Preparedness

| Goal | Performance | Color |
|------|-------------|-------|
| 90%  | 97.2%       |       |

As of the third quarter, 97.2% (205 of 211) of the clients and real property under the auspices of San Diego County's Public Administrator/ Public Guardian (PA/PG) have been accurately mapped for emergency planning services. Accurately mapping PA/PG clients and property ensures continuation of services in the event of an emergency and reduces the consequences of a disaster. Maps are updated monthly to reflect client changes (new clients and those that have moved or passed away) and property changes (newly discovered property and property that has been sold). PA/PG is looking for ways to increase the frequency of updating these maps next fiscal year so that they reflect the most current status possible.

### % of Clients & Real Property Accurately Mapped — Target



## COMMUNICATION

### School Districts Provided Technical Assistance Implementing Wellness Policies

| Goal | Performance | Color |
|------|-------------|-------|
| 6    | 10          |       |

From July 2008 through March 2009, 10 schools districts were provided with technical assistance on implementing policies to reduce childhood obesity. This has surpassed the target of 6 for FY 08-09. Being overweight exposes children to serious health problems. As children age, the health problems they experience will result in growing costs for medical care, lost productivity and human resources. School environments can serve as a primary influencer on eating and physical activity habits. Implementation of School Wellness Policies are a critical piece in creating healthy environments.

### # of School Districts Provided with Technical Assistance Implementing Wellness Policies

