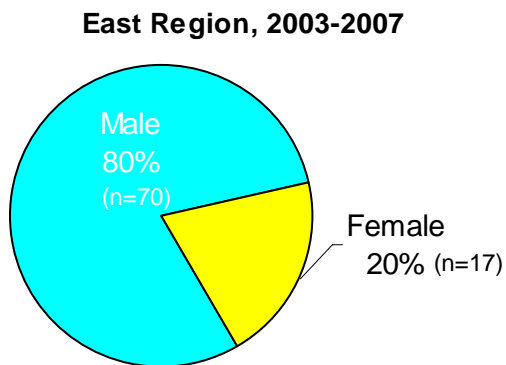


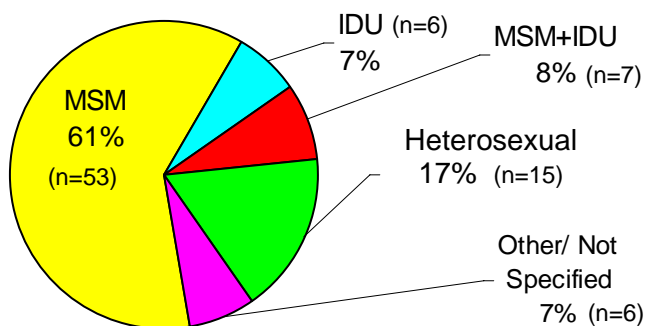
HIV* in the East HHSA Region

Gender

The current HIV reporting system is new and rates cannot be calculated for HIV cases until the system matures. Between the year 2003 and 2007, 87 individuals were diagnosed and subsequently reported with HIV in the East region. The East region had a greater proportion of female cases than the County overall.



East Region, 2003-2007



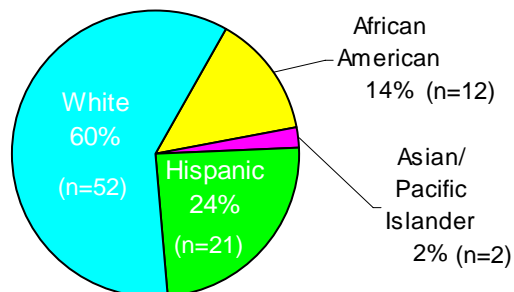
Mode of Transmission

The majority of the reported HIV cases from the East region were MSM (61%), with heterosexual (17%), other (7%), MSM+IDU (8%), and IDU (7%) following. The East region had a smaller proportion of MSM transmission than the County overall and a greater proportion of heterosexual and IDU.

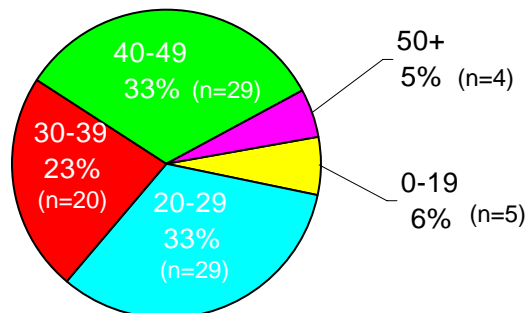
Racial/Ethnic Group

Most HIV cases reported in the East region were among whites (60%). Hispanics followed with 24% of cases, African American with 14%, and Asian/Pacific Islander with 2% (no Native American cases were reported in this time period). The East region had a greater proportion of white cases and smaller proportion of Hispanic cases than the County overall.

East Region, 2003-2007



East Region, 2003-2007



Age at Diagnosis

In the East region the 20-29 age group and 40-49 age group each made up 33% of HIV cases. The 20-29 age group followed with 23%, the 0-19 with 6%, and 50+ with 5%. The East region had a higher proportion of the 40-49 age group and lower proportion of the 30-39 age group than the County overall.

*Notes: HIV cases by date of diagnosis, 2003-2007. The current HIV reporting system, initiated April 2006, is not mature, therefore caution should be taken in interpreting the data. No rates were calculated. For more information, call Community Epidemiology at (619) 515-6675 or log on to www.sdhivaid.org