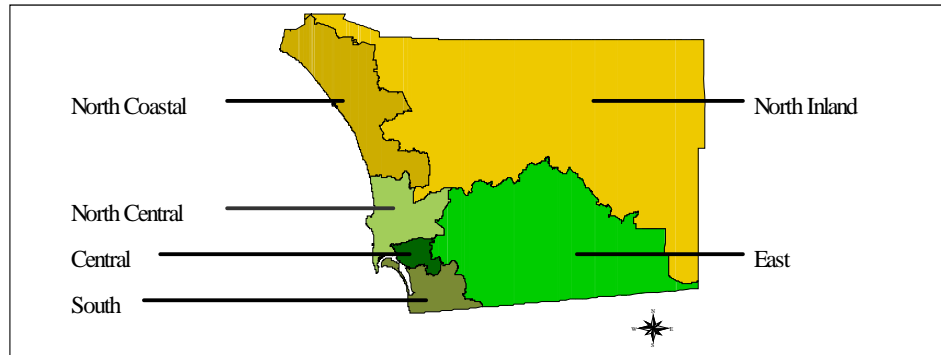


## Appendix 5. Health and Human Services Agency (HSA) Regions of San Diego

San Diego County is divided into 6 Health and Human Services Agency regions by zip code. The following list presents the regions and the zip codes contained therein.

**Figure 12:**  
HSA Regions of  
San Diego County



### Central Area

Zip codes 92101, 92102, 92103, 92104, 92105, 92113, 92114, 92115, 92116, 92132, 92134, 92136, 92139, 92112, 92162, 92163, 92164, 92165, 92170, 92175, 92176, 92186, 92191, 92194, 92186, 92191, 92194, 92199, 92152, 92158, 92181, 92187, 92191, 92194, and 92195.

### East Area

Zip codes 91901, 91905, 91906, 91916, 91917, 91931, 91934, 91935, 91941, 91942, 91945, 91948, 91962, 91963, 91977, 91978, 91980, 92019, 92020, 92021, 92040, 92071, 91944, 92090, 91946, and 92090.

### South

Zip codes 91902, 91910, 91911, 91913, 91914, 91915, 91932, 91950, 92010, 92011, 92118, 91921, 91990, 92135, 92154, 92155, 92173, 92179, 91909, 91912, 92143, 91951, 91933, 92073, 92050, 92153, 92158, 91921, and 91990.

### North Coastal

Zip codes 92007, 92008, 92009, 92013, 92014, 92024, 92051, 92052, 92054, 92055, 92056, 92057, 92067, 92013, 92058, 92068, 92075, 92077, 92081, 92083, 92084, 92672, 92092, 92093, 92169, 92161, 92038, 92137, 92078, 92091, 92199, 92096, 92013, 92078, 92091, 92077, 92081, 92008, 92058, and 92096.

### North Inland

Zip codes 92003, 92004, 92025, 92026, 92027, 92028, 92029, 92036, 92059, 92060, 92061, 92064, 92065, 92066, 92069, 92070, 92082, 92086, 92127, 92128, 92129, 92259, 92390, 92536, 92592, 92046, 92198, 92190, and 92079.

### North Central

Zip codes 92037, 92106, 92107, 92108, 92109, 92110, 92111, 92117, 92119, 92120, 92121, 92122, 92123, 92124, 92126, 92130, 92131, 92133, 92140, 92142, 92145, 92138, 92147, 92166, 92168, 92171, 92172, 91990, 92193, 92196, 92177, and 92147.

