

2006 Medical Director's Updates to BSPC

- [May 2006 Update](#)
- [June 2006 Update](#)
- [July 2006 Update](#)
- [September 2006 Update](#)
- [October 2006 Update](#)
- [November 2006 Update](#)



JEAN M. SHEPARD
DIRECTOR

County of San Diego

HEALTH AND HUMAN SERVICES AGENCY

NANCY L. BOWEN, M.D., M.P.H.
PUBLIC HEALTH OFFICER

PUBLIC HEALTH SERVICES
1700 PACIFIC HIGHWAY, SAN DIEGO, CALIFORNIA 92101-2417
(619) 531-5800 FAX (619) 515-6707

Community Epidemiology
Emergency & Disaster Medical Services
HIV/AIDS Services
Maternal, Child and Family Health Services
Public Health Laboratory
PH Nursing/Border Health
TB & STD Control
Vital Records

Bruce E. Haynes, M.D.
Interim Medical Director
Division of Emergency Medical Services
6255 Mission Gorge Road
San Diego, CA 92120-3599
(619) 285-6429 FAX:(619) 285-6531

Medical Director's Update for Base Station Physicians Committee May, 2006

San Diego County EMS:

Dr. Hoyt: Dr. David Hoyt is leaving San Diego after many years at UC San Diego. Most recently as chief of the trauma service, he has been a tireless advocate for trauma care, and a world renowned researcher. Dr. Hoyt is focused on improving the care of the trauma patient. Join us in wishing him well, and thanking him for his years of service to those in the EMS system.

Alvarado Hospital: The Office of the Inspector General started action to withdraw Medicare patients from Alvarado after the investigation into "inducements" at the hospital. If successful, the action would likely result in the hospital's closure. Alvarado will likely appeal the notice and, usually, a settlement is reached in these cases to allow the hospital to continue in the Medicare program. If for some reason a settlement is not reached, there was at least one expression of interest in the newspaper in purchasing the facility. Nevertheless, EMS is working on a contingency plan if the hospital were to close.

Off-load Study: Letters will go out to the hospitals this week to seek cooperation in the off-load study conducted by EMOC and EMS. The study is scheduled to begin June 5 running for two weeks to end on June 18th. The purpose will be examine the length of time it takes for patients to be moved from ambulance personnel to the care of the hospital on a hospital bed, and determine how often the off-load time is substantial and might delay an EMS unit from getting back in service.

Capacity Study: The hospital capacity study is underway, looking at the number of admitted patients held in the ED at 8 am and 8 pm. Data entry to this point has been somewhat hit or miss with only 23% of the possible twice a day entries completed. EMS will work on improving the response and clarifying any questions. Hospitals should be entering into QCS each day at 8 am and 8 pm the number of admitted patients being held in the ED for ICU, telemetry and floor beds. Entries must be two digits each, e.g. 03/02/01. Please call EMS if you have questions.

STEMI Update: STEMI receiving center facility standards were approved at the last Cardiology Advisory Committee (CAC) meeting. Applications should go out to the hospitals in the near future. Designation policies are delayed by legal review, but should go to EMCC in June. We are still hopeful to have applications returned to us in June and the system up and running in July. The Union Tribune article focused attention on the benefits expected from the system. The article used an “ideal” volume instead of the minimum case volume quantities recommended by the American College of Cardiology, so left an inaccurate view of the standards. System participants will be clearer after we receive the applications.

Stroke Update: The Acute Care/Emergency questionnaire is out at the hospitals and the steering committee will meet again in June.

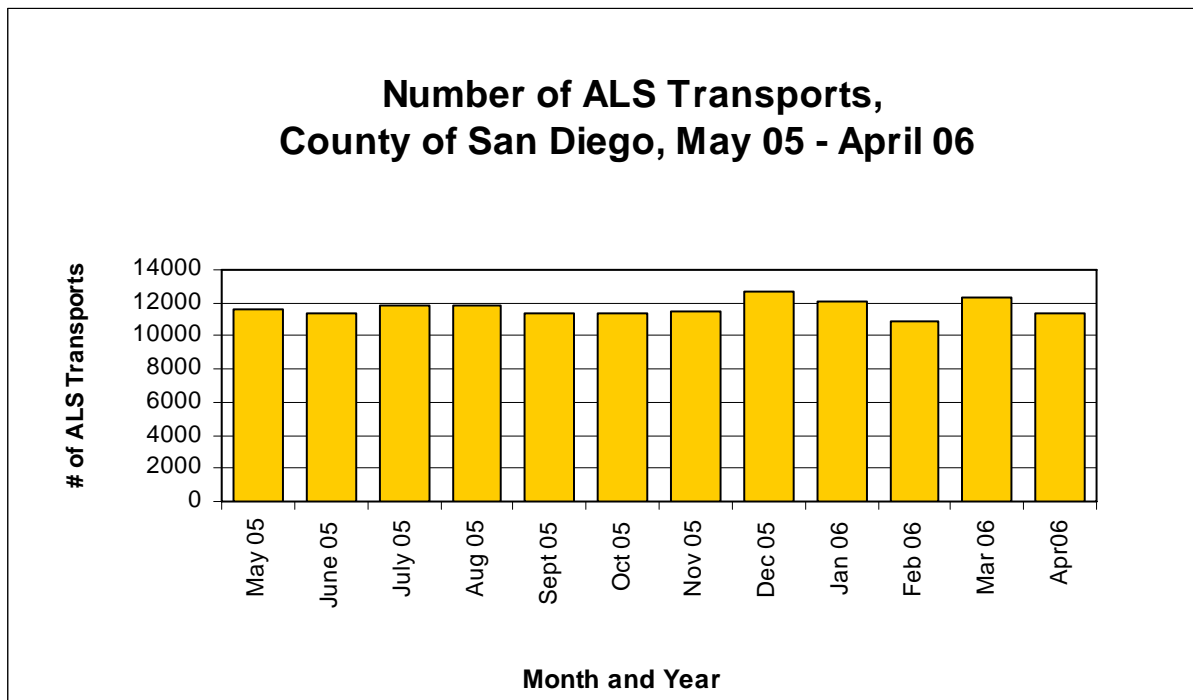
ROC: Hypertonic saline training has started, according to the investigators. We are finishing some of the final agreements.

In-service: The education package will go out to trainers this week.

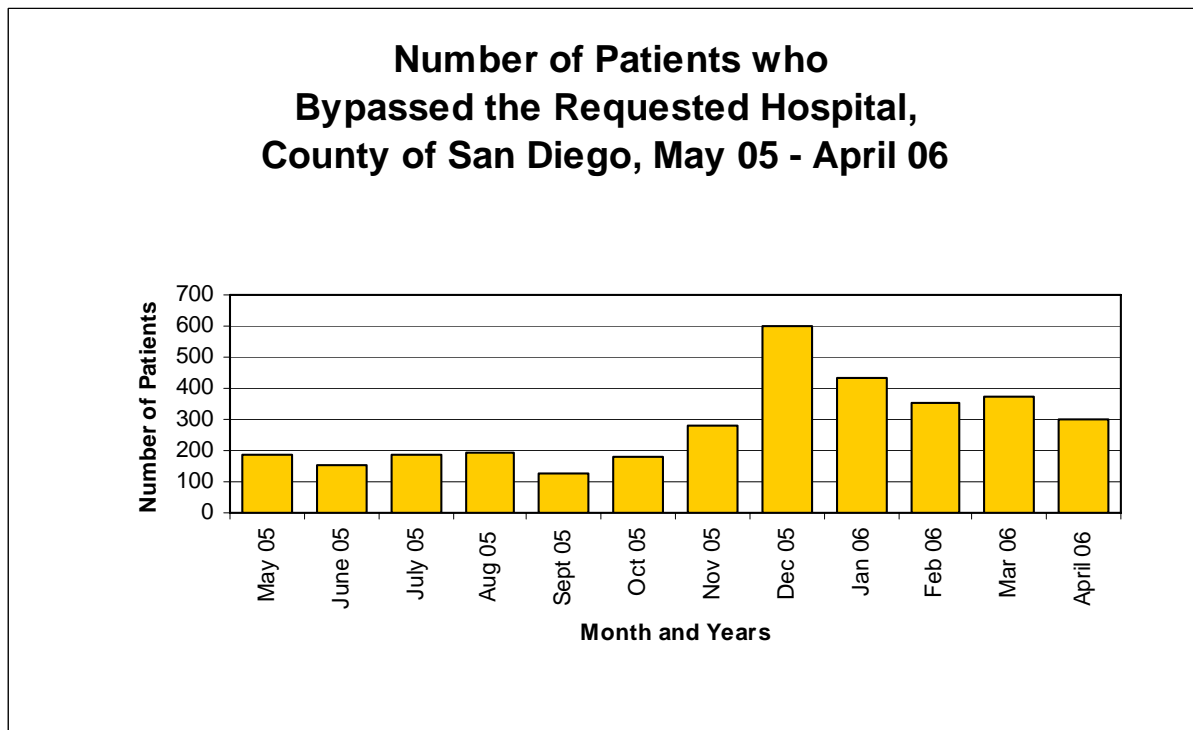
EMOC

New guidelines for placing individuals on 5150 holds were discussed at the May 12, 2006 meeting. Information for field providers will be out soon.

Below are the patient destination data in graphic form:

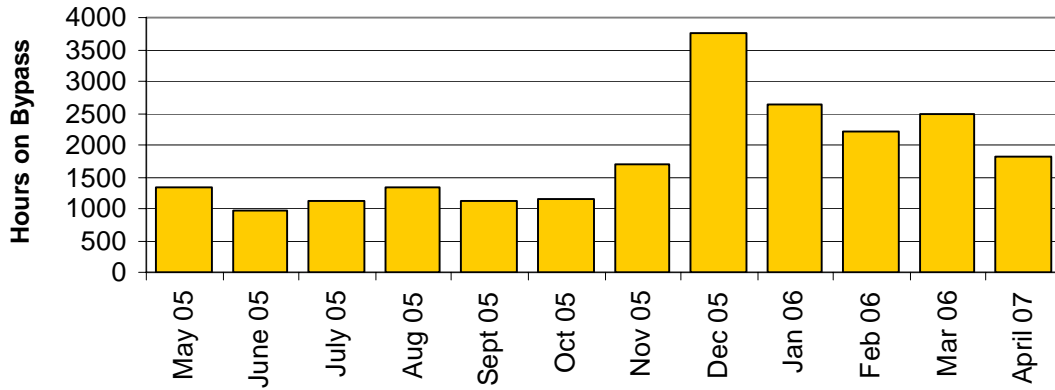


Source: County of San Diego, Health and Human Services Agency, Division of Emergency Medical Services, MICN Records, May 2005 – Apr 2006 Note: Numbers based on Run Outcomes of Transport by Unit and Transport by Other



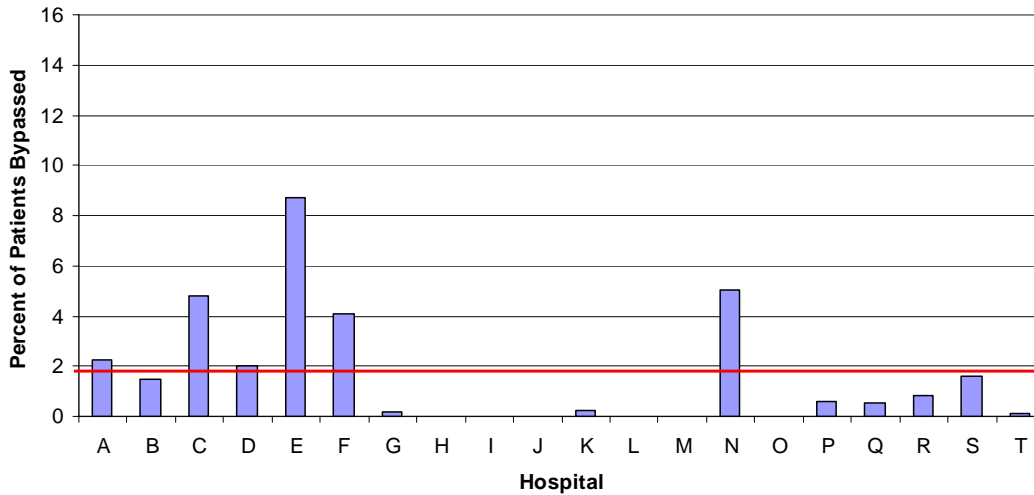
Source: County of San Diego, Health and Human Services Agency, Division of Emergency Medical Services, MICN Records, May 2005 – Apr 2006 Note: Numbers based on Run Outcomes of Transport by Unit and Transport by Other

Total Hours on Emergency Department Bypass County of San Diego, May 05 - April 06



Source: County of San Diego, Health and Human Services Agency, Division of Emergency Medical Services, MICN Records, May 2005 –Apr 2006

Percent of Patients Bypassed per Hospital, April 2006



Note: The red line represents the mean value of percent of patients bypassed per hospital, April 2006

Source: County of San Diego, Health and Human Services Agency, Division of Emergency Medical Services, MICN Records, Apr 2006 Note: Numbers based on Run Outcomes of Transport by Unit and Transport by Other



JEAN M. SHEPARD
DIRECTOR

County of San Diego

HEALTH AND HUMAN SERVICES AGENCY

NANCY L. BOWEN, M.D., M.P.H.
PUBLIC HEALTH OFFICER

PUBLIC HEALTH SERVICES
1700 PACIFIC HIGHWAY, SAN DIEGO, CALIFORNIA 92101-2417
(619) 531-5800 FAX (619) 515-6707

Community Epidemiology
Emergency & Disaster Medical Services
HIV/AIDS Services
Maternal, Child and Family Health Services
Public Health Laboratory
PH Nursing/Border Health
TB & STD Control
Vital Records

Bruce E. Haynes, M.D.
Interim Medical Director
Division of Emergency Medical Services
6255 Mission Gorge Road
San Diego, CA 92120-3599
(619) 285-6429 FAX:(619) 285-6531

Medical Director's Update for Base Station Physicians' Committee June, 2006

IOM Report: The Institute of Medicine just released the three year study of emergency medical services in the United States. Brent Eastman was on the national committee and quite helpful in framing the questions and observations. The report outlines a variety of areas that could be improved, along with recommendations. Three publications make up the report, one on hospital based emergency care, prehospital ems, and pediatric emergency care. Each of the volumes can be purchased from the National Academies Press. The summary and fact sheet are available at: <http://www.iom.edu/Object.File/Master/35/014/Emergency%20Care.pdf>, and <http://www.iom.edu/Object.File/Master/35/040/Emergency%20Care%20Findings%20and%20Recs.pdf>.

San Diego County EMS:

STEMI Update: STEMI receiving center applications are coming in. The implementing policies will go to EMCC on Friday for approval. There will be brief site visits to the applicants and the system hopefully will go ahead in August.

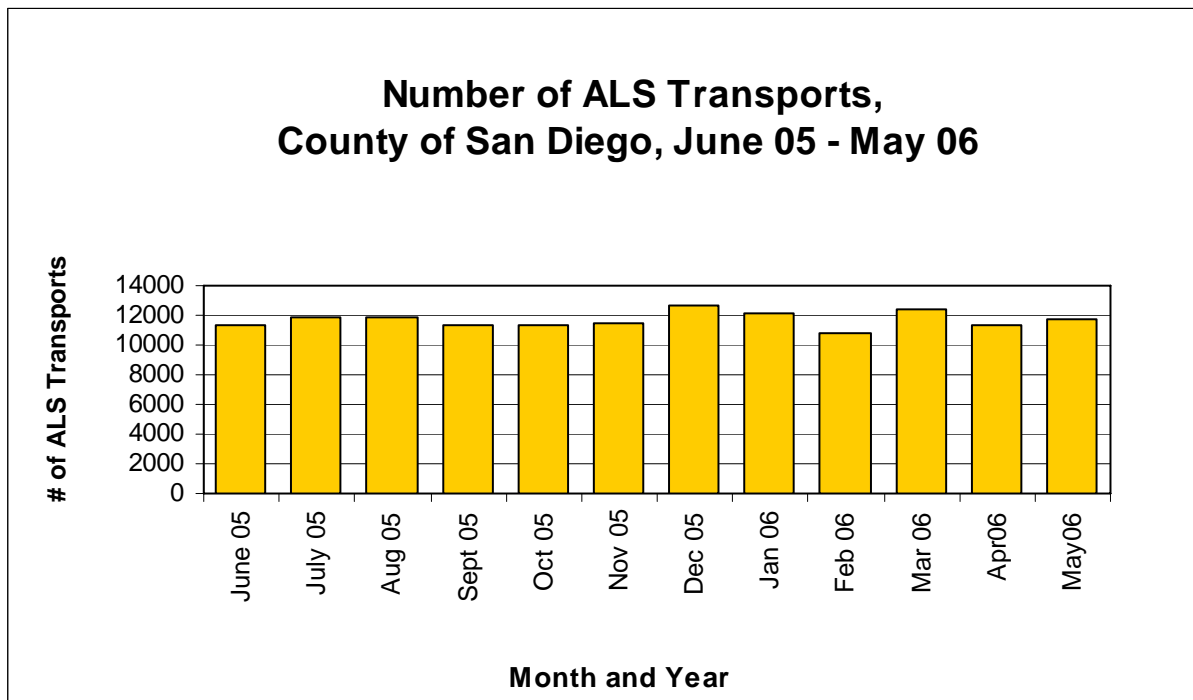
Off-load Study: There is some difficulty with getting all patients logged in as part of the study, so EMOC recommended that the study be extended one week.

Capacity Study: The hospital capacity study is underway, looking at the number of admitted patients held in the ED at 8 am and 8 pm. Data entry to this point has been somewhat hit or miss with only about 20% of the possible entries completed. EMS will work on improving the response and clarifying any questions. Hospitals should be entering into QCS each day at 8 am and 8 pm the number of admitted patients being held in the ED for ICU, telemetry and floor beds. Entries must be two digits each, e.g. 03/02/01. Please call EMS if you have questions.

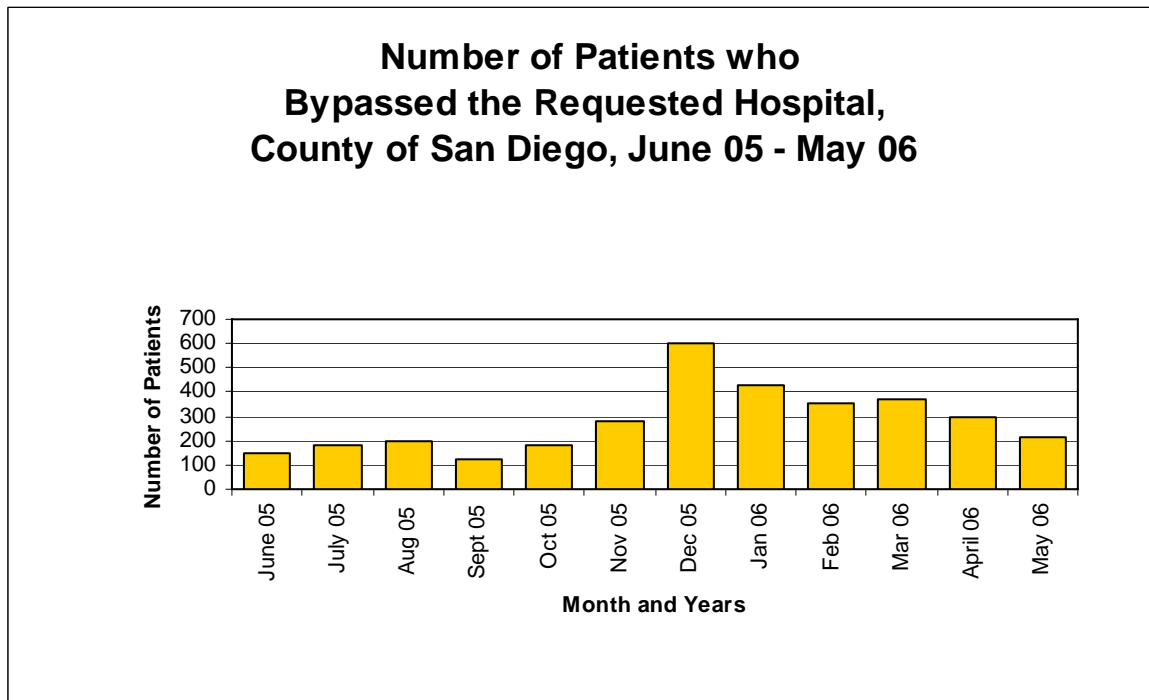
Stroke Update: The Acute Care/Emergency questionnaire shows that many hospitals already have a number of the components of primary stroke centers, and that tPA is used. The steering committee reviewed the survey and made some suggestions for follow-up, and we hope to add more respondents.

In-service: Education is underway. A clarifying letter went out regarding implementation.

Below are the patient destination data in graphic form:

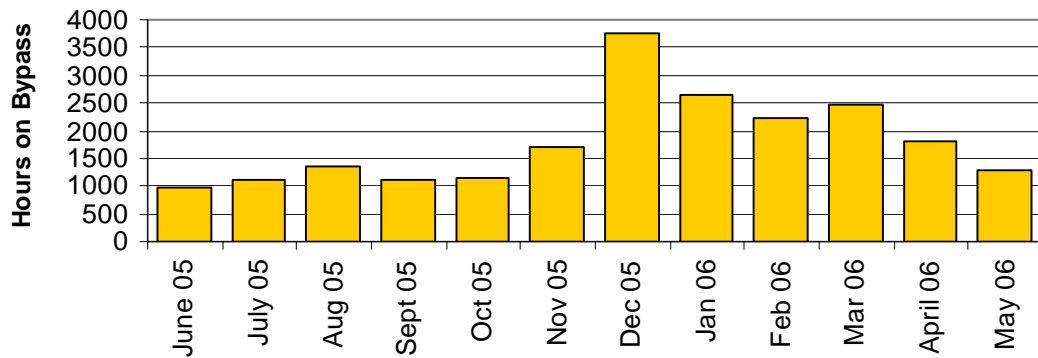


Source: County of San Diego, Health and Human Services Agency, Division of Emergency Medical Services, MICN Records, June 2005 – May 2006 Note: Numbers based on Run Outcomes of Transport by Unit and Transport by Other



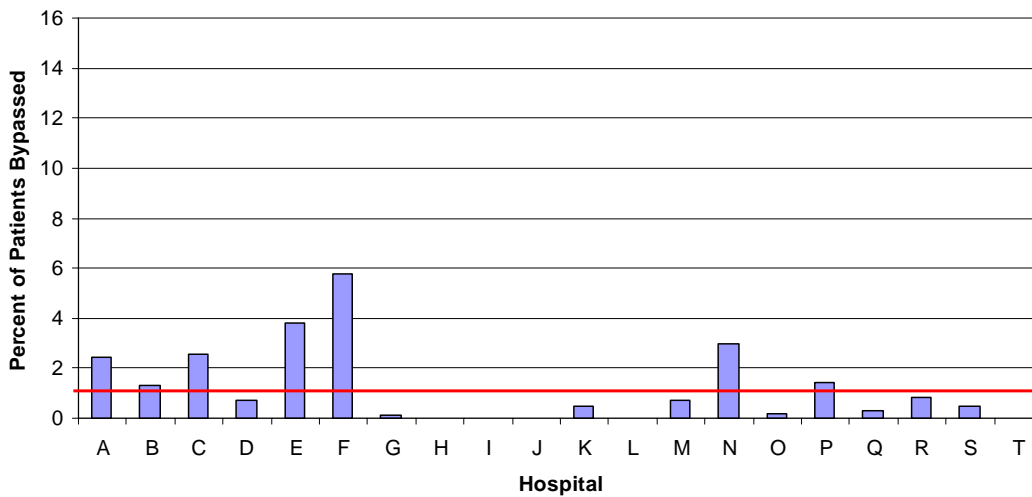
Source: County of San Diego, Health and Human Services Agency, Division of Emergency Medical Services, MICN Records, June 2005 – May 2006 Note: Numbers based on Run Outcomes of Transport by Unit and Transport by Other

Total Hours on Emergency Department Bypass County of San Diego, June 05 - May 06



Source: County of San Diego, Health and Human Services Agency, Division of Emergency Medical Services, MICN Records, June 2005 –May 2006

Percent of Patients Bypassed per Hospital, May 2006



Note: The red line represents the mean value of percent of patients bypassed per hospital, May 2006

Source: County of San Diego, Health and Human Services Agency, Division of Emergency Medical Services, MICN Records, June 2006 Note: Numbers based on Run Outcomes of Transport by Unit and Transport by Other



JEAN M. SHEPARD
DIRECTOR

County of San Diego

HEALTH AND HUMAN SERVICES AGENCY

NANCY L. BOWEN, M.D., M.P.H.
PUBLIC HEALTH OFFICER

PUBLIC HEALTH SERVICES
1700 PACIFIC HIGHWAY, SAN DIEGO, CALIFORNIA 92101-2417
(619) 531-5800 FAX (619) 515-6707

Community Epidemiology
Emergency & Disaster Medical Services
HIV/AIDS Services
Maternal, Child and Family Health Services
Public Health Laboratory
PH Nursing/Border Health
TB & STD Control
Vital Records

Bruce E. Haynes, M.D.
Interim Medical Director
Division of Emergency Medical Services
6255 Mission Gorge Road
San Diego, CA 92120-3599
(619) 285-6429 FAX:(619) 285-6531

Medical Director's Update for Base Station Physicians' Committee July, 2006

San Diego County EMS:

STEMI Update: Eight hospitals received their site visit for STEMI receiving center designation by today. The last four will be surveyed later this week. We are on track to begin in August, after Board of Supervisors' approval, and designation of the facilities.

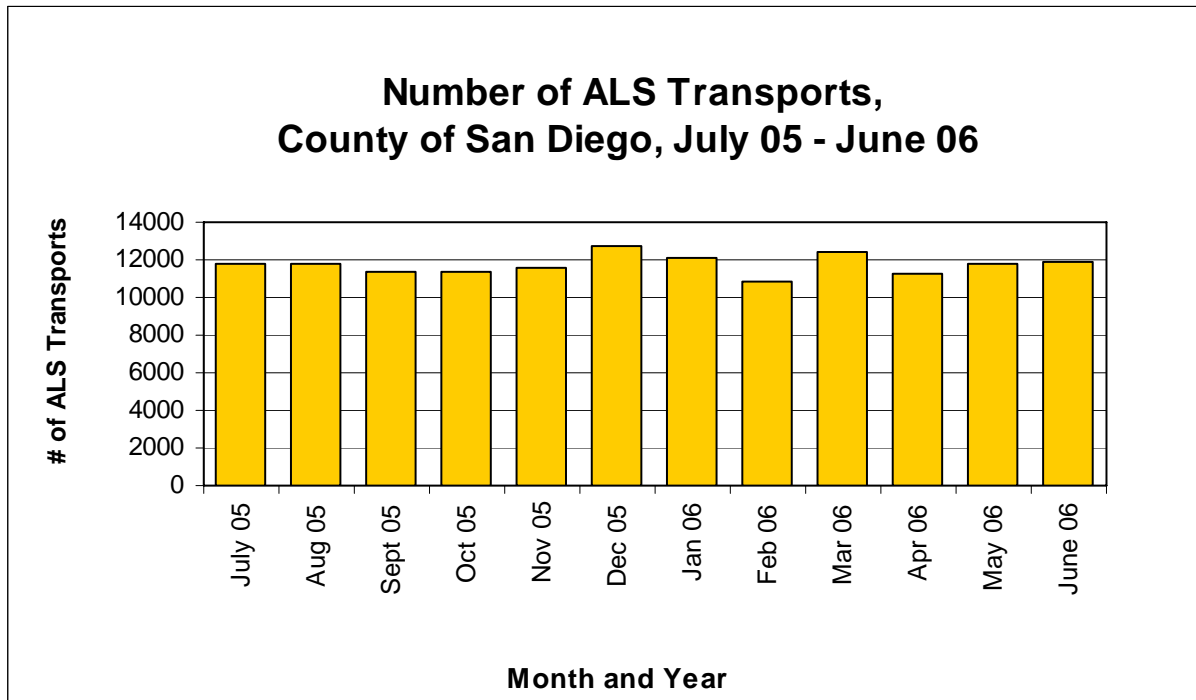
Off-load Study: Data is being gathered and tabulated now. A quick look shows some delays, but generally short off-load times. This will be presented at your September meeting.

Capacity Study: The hospital capacity study again had about 19% of possible data reported for June. After extended discussion at EMOC, Dr. Lev sent out a reminder on data collection. After several more months we may re-look at how to conduct the study, and the goal.

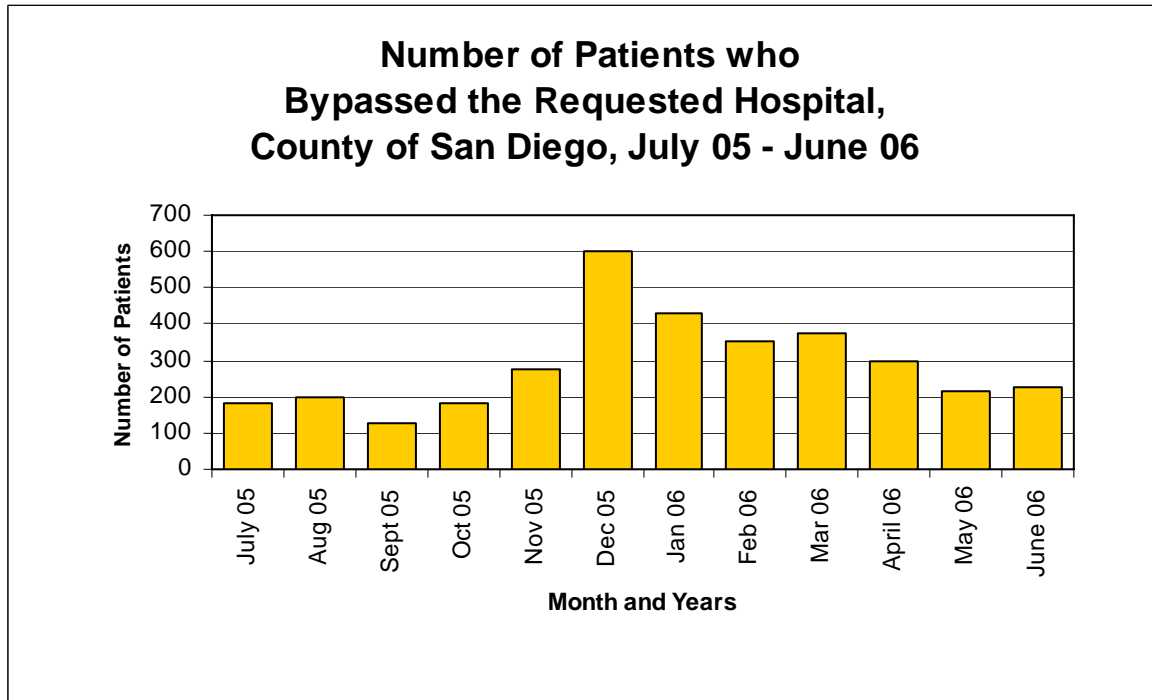
Alvarado Update: The San Diego Union-Tribune reported Tenet says all bidders for the hospital operate hospitals. This is good news and seems to increase the chances the hospital will continue as an acute care facility.

Over-crowding Summit: Set for October 3rd. Speakers being invited now. This EMOC event will include presentations by hospitals with idea sharing on solutions.

Below are the patient destination data in graphic form:

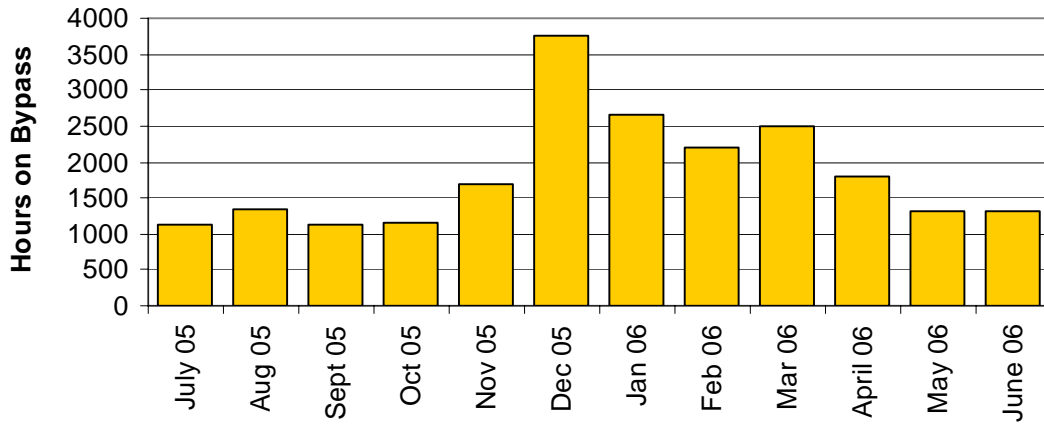


Source: County of San Diego, Health and Human Services Agency, Division of Emergency Medical Services, MICN Records, July 2005 – June 2006 Note: Numbers based on Run Outcomes of Transport by Unit and Transport by Other



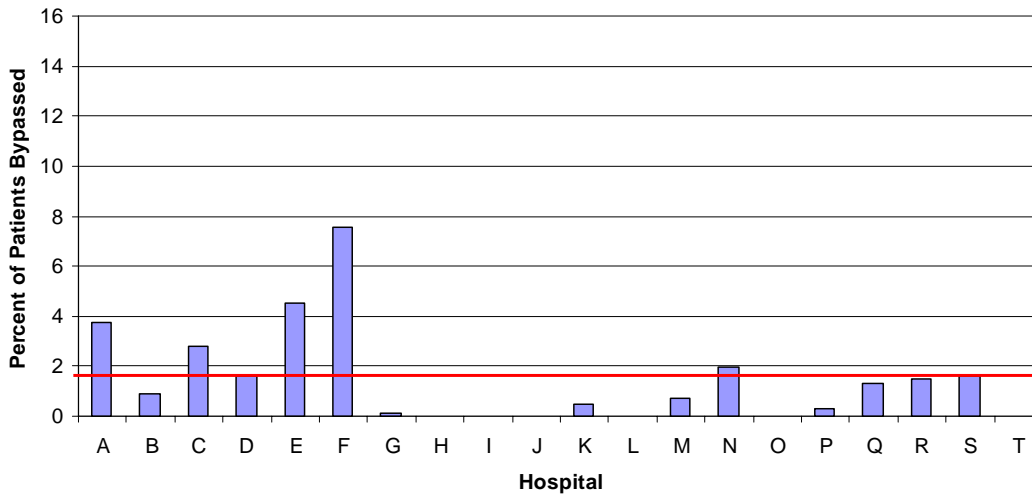
Source: County of San Diego, Health and Human Services Agency, Division of Emergency Medical Services, MICN Records, July 2005 – June 2006 Note: Numbers based on Run Outcomes of Transport by Unit and Transport by Other

Total Hours on Emergency Department Bypass County of San Diego, July 05 - June 06



Source: County of San Diego, Health and Human Services Agency, Division of Emergency Medical Services, MICN Records, July 2005 – June 2006

Percent of Patients Bypassed per Hospital, June 2006



Note: The red line represents the mean value of percent of patients bypassed per hospital, June 2006

Source: County of San Diego, Health and Human Services Agency, Division of Emergency Medical Services, MICN Records, June 2006 Note: Numbers based on Run Outcomes of Transport by Unit and Transport by Other



JEAN M. SHEPARD
DIRECTOR

County of San Diego

HEALTH AND HUMAN SERVICES AGENCY

NANCY L. BOWEN, M.D., M.P.H.
PUBLIC HEALTH OFFICER

PUBLIC HEALTH SERVICES
1700 PACIFIC HIGHWAY, SAN DIEGO, CALIFORNIA 92101-2417
(619) 531-5800 FAX (619) 515-6707

Community Epidemiology
Emergency & Disaster Medical Services
HIV/AIDS Services
Maternal, Child and Family Health Services
Public Health Laboratory
PH Nursing/Border Health
TB & STD Control
Vital Records

Bruce E. Haynes, M.D.
Medical Director
Division of Emergency Medical Services
6255 Mission Gorge Road
San Diego, CA 92120-3599
(619) 285-6429 FAX:(619) 285-6531

Medical Director's Update for Base Station Physicians' Committee September, 2006

San Diego County EMS:

STEMI Update: Authorization from the Board of Supervisors should come today. Thirteen hospitals are designated. I will discuss operational issues.

Off-load Study: Patients were off-loaded within 10 minutes 88% of the time. Virtually all patients were handed off within 20 minutes, although there were areas of difficulty. We plan on repeating the study in the future, perhaps during the flu season.

Capacity Study: The hospital capacity study had 34% of possible data reported in August. The definition of patient held will be no bed two hours after request.

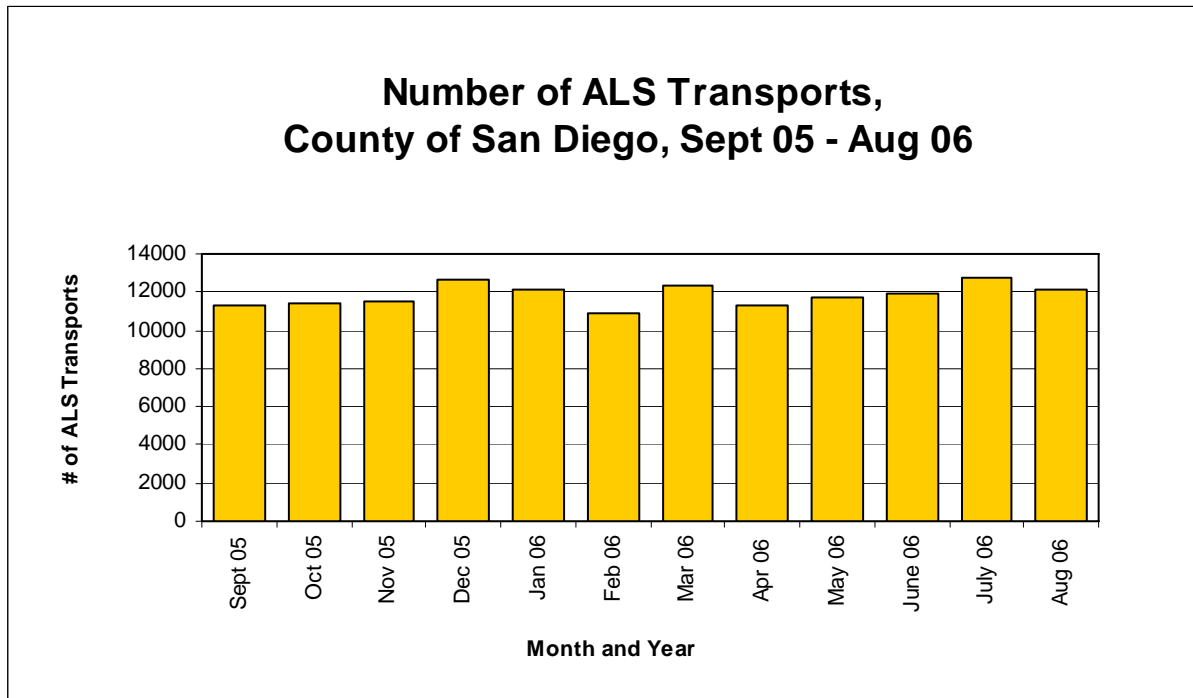
Alvarado Hospital: Number of bidders now reduced. No word on decisions.

Over-crowding Summit: Set for October 3rd. Speaker from JCAHO and all the hospitals.

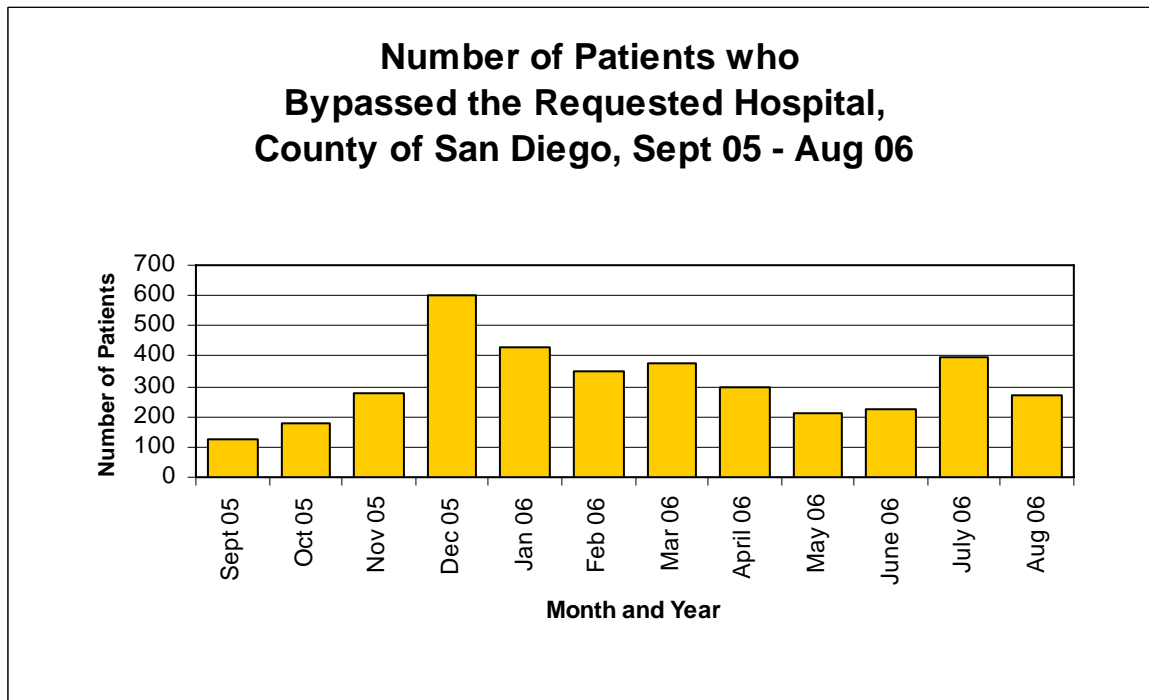
Abaris Study: A preliminary version of the healthcare safety net study by the Abaris Group is now available for review at <http://abarisgroup.com/>. The study evaluates the current healthcare system in San Diego, and projects needs into the future.

Protocol Revision Task Force: We will be asking for representatives from the constituent groups, and will ask for one from BSPP today. Contact Marcy Metz at EMS for more information.

Below are the patient destination data in graphic form:

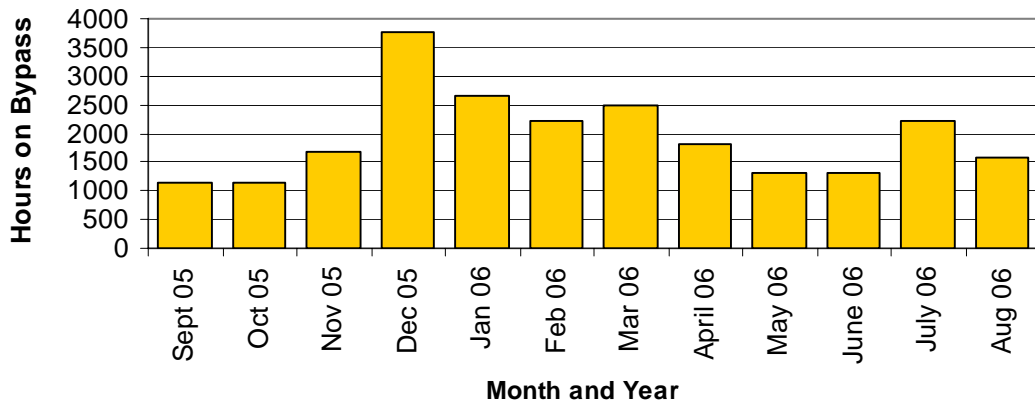


Source: County of San Diego, Health and Human Services Agency, Division of Emergency Medical Services, MICN Records, Sept 2005 – Aug 2006 Note: Numbers based on Run Outcomes of Transport by Unit and Transport by Other



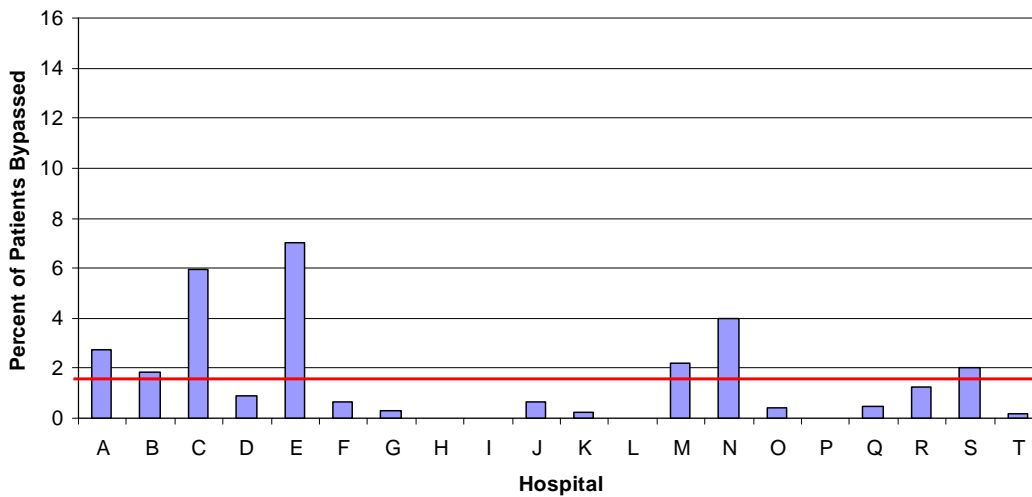
Source: County of San Diego, Health and Human Services Agency, Division of Emergency Medical Services, MICN Records, Sept 2005 – Aug 2006 Note: Numbers based on Run Outcomes of Transport by Unit and Transport by Other

Total Hours on Emergency Department Bypass County of San Diego, Sept 05 - Aug 06



Source: County of San Diego, Health and Human Services Agency, Division of Emergency Medical Services, MICN Records, Sept 2005 – Aug 2006

Percent of Patients Bypassed per Hospital, Aug 2006



Source: County of San Diego, Health and Human Services Agency, Division of Emergency Medical Services, MICN Records, Aug 2006 Note: Numbers based on Run Outcomes of Transport by Unit and Transport by Other



JEAN M. SHEPARD
DIRECTOR

County of San Diego

HEALTH AND HUMAN SERVICES AGENCY

NANCY L. BOWEN, M.D., M.P.H.
PUBLIC HEALTH OFFICER

PUBLIC HEALTH SERVICES
1700 PACIFIC HIGHWAY, SAN DIEGO, CALIFORNIA 92101-2417
(619) 531-5800 FAX (619) 515-6707

Community Epidemiology
Emergency & Disaster Medical Services
HIV/AIDS Services
Maternal, Child and Family Health Services
Public Health Laboratory
PH Nursing/Border Health
TB & STD Control
Vital Records

Bruce E. Haynes, M.D.
Medical Director
Division of Emergency Medical Services
6255 Mission Gorge Road
San Diego, CA 92120-3599
(619) 285-6429 FAX:(619) 285-6531

Medical Director's Update for Base Station Physicians' Committee October, 2006

San Diego County EMS:

Flu vaccine: All providers should be arranging for influenza vaccine for their employees. Also, encourage them to receive Tdap (with new pertussis vaccine) if they need tetanus shot, or for routine immunizations when possible.

STEMI Update: Authorized by Board of Supervisors. Awaiting completion and signing of Memoranda of Agreements. Hopefully operational in November, if memoranda are signed quickly.

Capacity Study: The hospital capacity study had 37% of possible data reported in September. The definition of patient held will be no bed two hours after request.

Alvarado Hospital: No word on purchaser to this point.

Overcrowding Summit: Good attendance and many ideas shared for increasing efficiency and throughput of patients. Likely to be repeated next year.

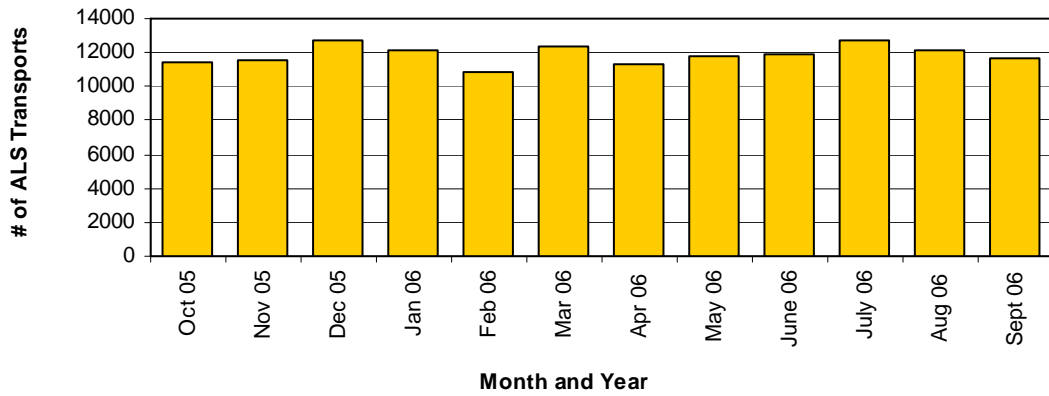
Abaris Study: Further meetings among county employees are occurring. Will be taken to Board again in December. Remember it is at <http://abarisgroup.com/>.

Protocol Revision Task Force: Will have first meeting at end of this month

Pandemic Flu: The committee continues to meet and develop outline of procedures.

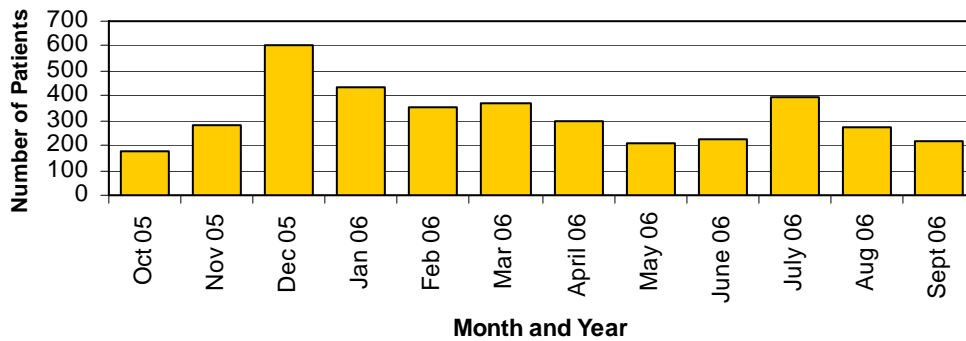
Below are the patient destination data in graphic form:

Number of ALS Transports, County of San Diego, Oct 05 - Sept 06



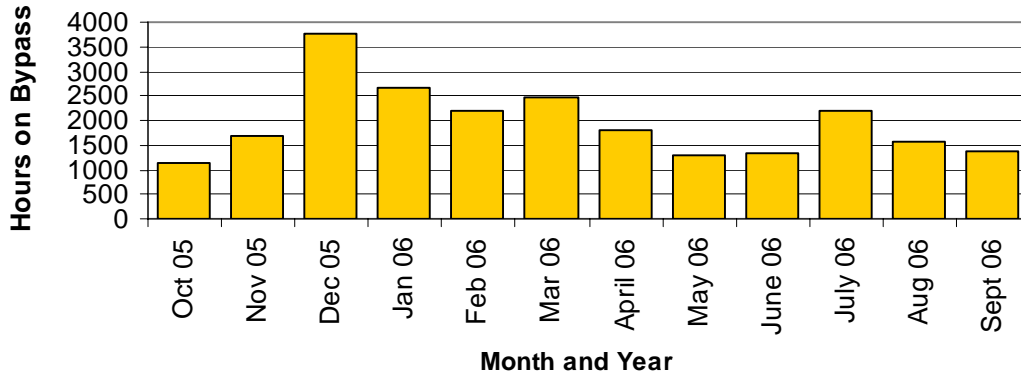
Source: County of San Diego, Health and Human Services Agency, Division of Emergency Medical Services, MICN Records, Oct 2005 – Sept 2006 Note: Numbers based on Run Outcomes of Transport by Unit and Transport by Other

Number of Patients who Bypassed the Requested Hospital, County of San Diego, Oct 05 - Sept 06



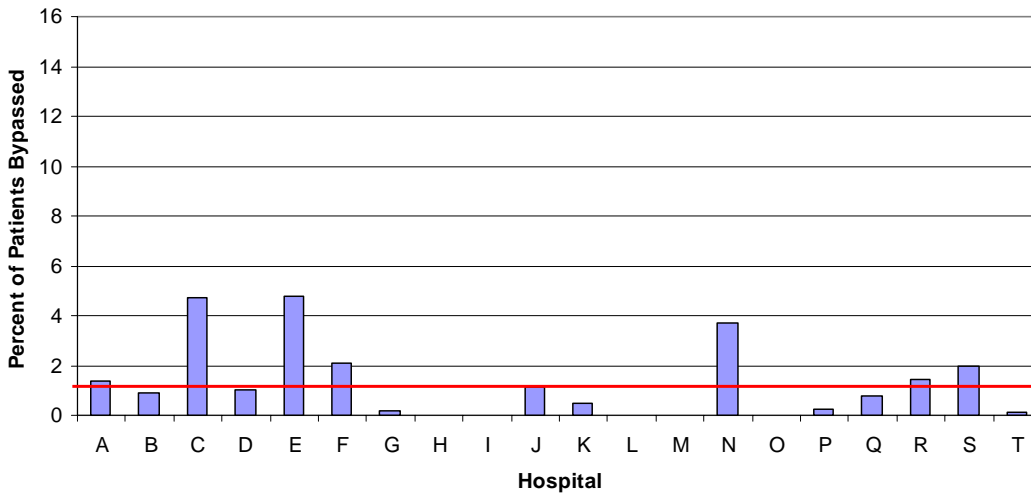
Source: County of San Diego, Health and Human Services Agency, Division of Emergency Medical Services, MICN Records, Oct 2005 – Sept 2006 Note: Numbers based on Run Outcomes of Transport by Unit and Transport by Other

Total Hours on Emergency Department Bypass County of San Diego, Oct 05 - Sept 06



Source: County of San Diego, Health and Human Services Agency, Division of Emergency Medical Services, MICN Records, Oct 2005 – Sept 2006

Percent of Patients Bypassed per Hospital, Sept 2006



Note: The red line represents the mean value of percent of patients bypassed per hospital, Sept 2006

Source: County of San Diego, Health and Human Services Agency, Division of Emergency Medical Services, MICN Records, Sept 2006 Note: Numbers based on Run Outcomes of Transport by Unit and Transport by Other



JEAN M. SHEPARD
DIRECTOR

County of San Diego

HEALTH AND HUMAN SERVICES AGENCY

NANCY L. BOWEN, M.D., M.P.H.
PUBLIC HEALTH OFFICER

PUBLIC HEALTH SERVICES
1700 PACIFIC HIGHWAY, SAN DIEGO, CALIFORNIA 92101-2417
(619) 531-5800 FAX (619) 515-6707

Community Epidemiology
Emergency & Disaster Medical Services
HIV/AIDS Services
Maternal, Child and Family Health Services
Public Health Laboratory
PH Nursing/Border Health
TB & STD Control
Vital Records

Bruce E. Haynes, M.D.
Medical Director
Division of Emergency Medical Services
6255 Mission Gorge Road
San Diego, CA 92120-3599
(619) 285-6429 FAX:(619) 285-6531

Medical Director's Update for Base Station Physicians' Committee November, 2006

San Diego County EMS:

Alvarado Hospital/Paradise Valley: Alvarado Hospital has been sold to two physician-brothers from Los Angeles. They have not operated a hospital before, but do operate a healthcare business. Their plans are to maintain the emergency department and other services. Paradise Valley has been sold to a physician from San Bernardino who also plans on operating the hospital with the emergency department.

STEMI Update: Memoranda of Agreement sent out to 12 STEMI receiving centers. System will commence when most of these are returned. A summary letter will be sent soon addressing the operational issues.

Flu season: A few early cases. The serotypes are in line with this year's vaccine. The high capacity plan was reviewed and several changes will be made for this year.

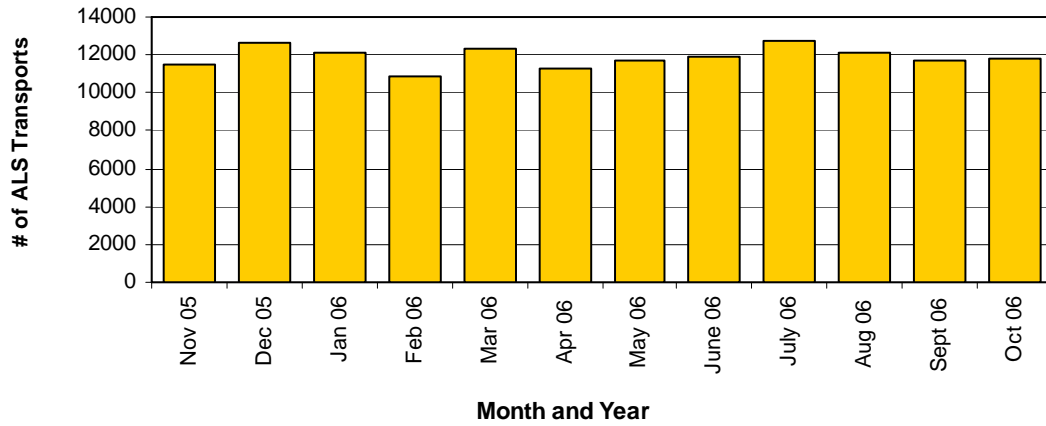
Capacity Study: The hospital capacity study had 38% of possible data reported in October. The definition of patient held will be no bed two hours after request.

Protocol Revision Task Force: Met and reviewed adult and pediatric guidelines. A number of clean ups. Looking at CPAP.

Pandemic Flu: Outline of procedures completed and presented to Fire EMS Committee.

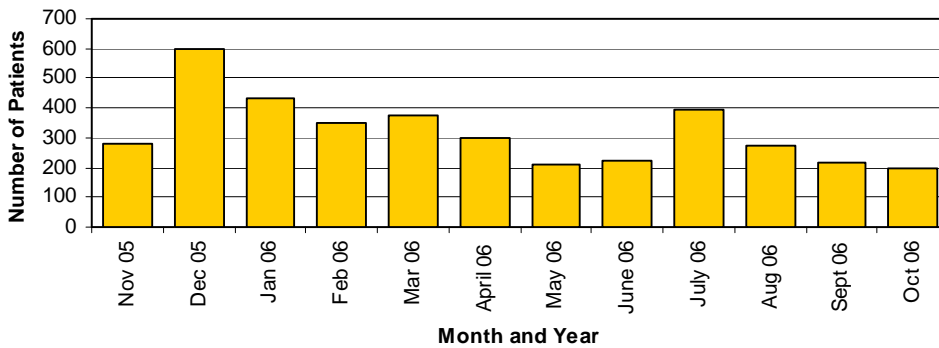
Below are the patient destination data in graphic form:

Number of ALS Transports, County of San Diego, Nov 05 - Oct 06

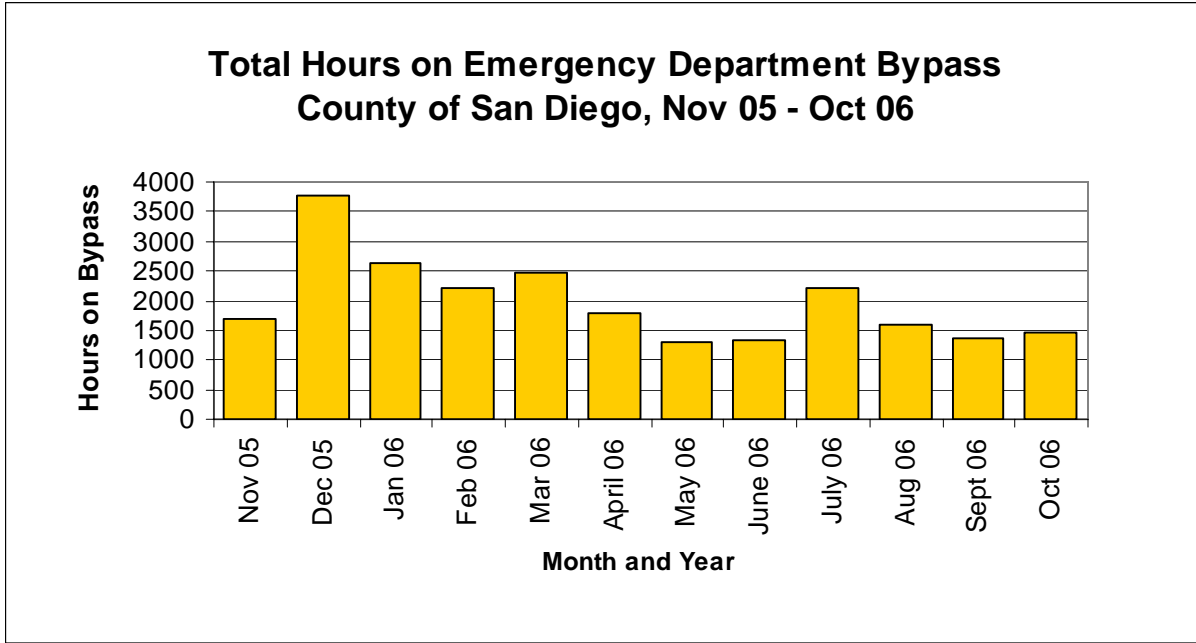


Source: County of San Diego, Health and Human Services Agency, Division of Emergency Medical Services, MICN Records, Nov 2005 – Oct 2006 Note: Numbers based on Run Outcomes of Transport by Unit and Transport by Other

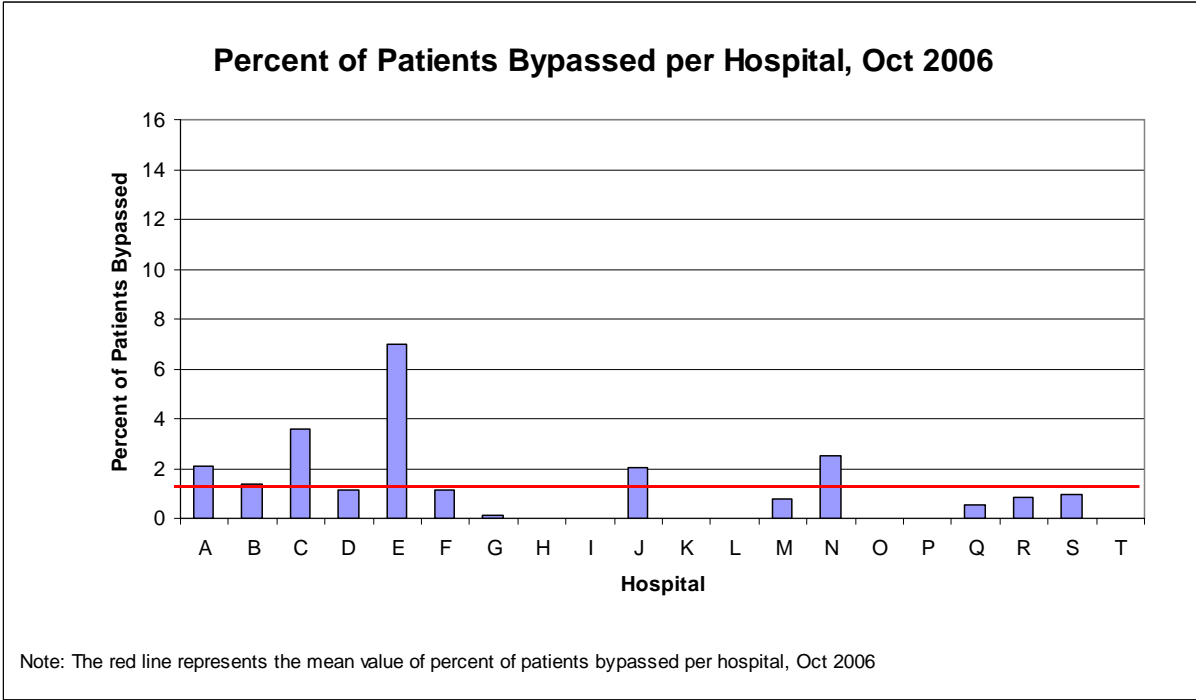
Number of Patients who Bypassed the Requested Hospital, County of San Diego, Nov 05 - Oct 06



Source: County of San Diego, Health and Human Services Agency, Division of Emergency Medical Services, MICN Records, Nov 2005 – Oct 2006 Note: Numbers based on Run Outcomes of Transport by Unit and Transport by Other



Source: County of San Diego, Health and Human Services Agency, Division of Emergency Medical Services, MICN Records, Nov 2005 – Oct 2006



Source: County of San Diego, Health and Human Services Agency, Division of Emergency Medical Services, MICN Records, Oct 2006 Note: Numbers based on Run Outcomes of Transport by Unit and Transport by Other