



COUNTY OF SAN DIEGO NEWS RELEASE

FOR IMMEDIATE PUBLICATION

Feb. 7, 2006

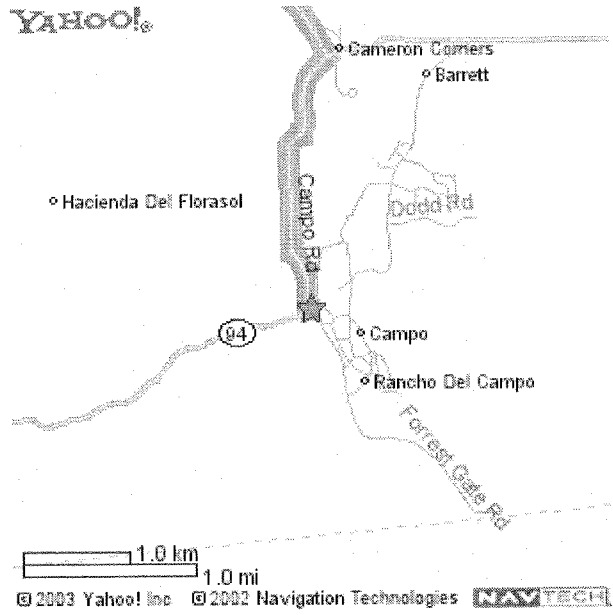
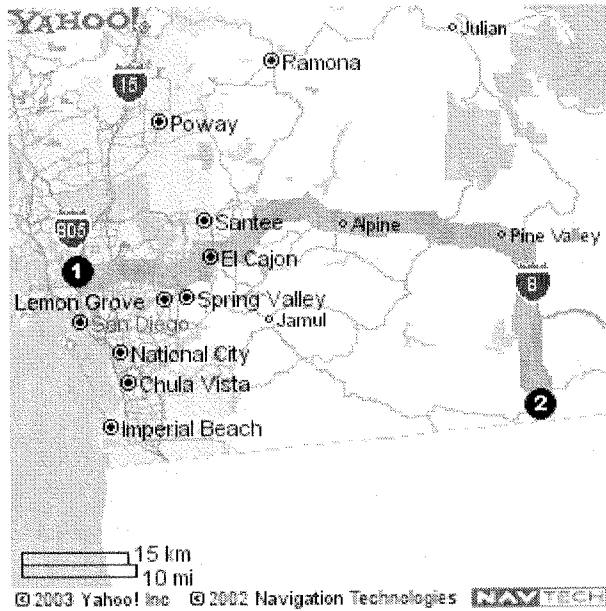
CONTACT: Leslie Ridgeway (619) 685-2239

MEDIA ADVISORY

RURAL CAMPO CLINIC TO RECEIVE GENERATOR WITH COUNTY'S HELP

- WHO:** Dianne Jacob, San Diego County Second District Supervisor
Jonathan Hardy, District Representative, Senator Denise Ducheny
Judith Shaplin, Mountain Health & Community Services, Inc. CEO
Holly Sparks, Mountain Health & Community Services Medical Director
Victoria Penland, Council of Community Clinics
- WHAT:** Ceremony to recognize effort to obtain a generator to provide emergency power for Mountain Empire Family Medicine
- WHERE:** Mountain Empire Family Medicine
31115 Highway 94, Campo, CA 91906
- WHEN:** 2 p.m.
Wednesday, Feb. 8
- WHY:** During the 2003 firestorms, a need was identified for backup power for rural clinics such as Mountain Empire Family Medicine, which lost thousands of dollars worth of vaccine and medications in their refrigerator due to a power outage. The County of San Diego Board of Supervisors and Second District Supervisor Dianne Jacob, County of San Diego Health and Human Services Agency (HHSA), Senator Denise Ducheny, and the Council of Community Clinics joined forces to obtain a \$19,000 generator for the clinic. The Board of Supervisors has placed a high priority on strengthening regional disaster preparedness.

###



MOUNTAIN HEALTH & COMMUNITY SERVICES

31115 HWY 94
 Campo, CA 91906
 Tel.: (619) 478-5254 Fax: (619) 478-9164

DIRECTIONS		MILES
1.	Start on METROPOLITAN DR	0.3
2.	Turn RIGHT on MISSION VALLEY RD.	0.1
3.	Turn RIGHT on MISSION CENTER RD.	0.9
4.	Made a SHARP LEFT turn to take the I-8 EAST ramp	0.1
5.	Merge on I-8 EAST	45.4
6.	Take the BUCKMAN SPRINGS RD. exit	0.2
7.	Turn RIGHT on BUCKMAN SPRINGS RD.	9.9
8.	Turn RIGHT on CAMPO RD.	1.6
9.	Turn LEFT on FORREST GATE RD.	0.0
DISTANCE : 58.6 miles		
APPROXIMATE TRAVEL TIME: 1 hour 10 minutes		