



County of San Diego

Children, Youth & Family Health Services
Disease Control/Epidemiology
Disease Prevention/Health Promotion
Emergency Medical Services
HIV/AIDS Services
Medical Quality Assurance
Public Health Laboratory
PH Nursing/Border Health
TB & STD Control
Vital Records

JEAN M. SHEPARD
Director
NANCY L. BOWEN, M.D., M.P.H.
PUBLIC HEALTH OFFICER

HEALTH AND HUMAN SERVICES AGENCY
PUBLIC HEALTH SERVICES
1700 PACIFIC HIGHWAY, SAN DIEGO, CALIFORNIA 92101-2417
(619) 515-6583 FAX (619) 515-6707
Emergency Medical Services
6255 Mission Gorge Road
San Diego, CA 92120
(619) 285-6429 Fax: (619) 285-6531

Gary M. Vilke, M.D., FACEP, FAAEM
Medical Director
Division of Emergency Medical Services
6255 Mission Gorge Road
San Diego, CA 92120-3599
(619) 285-6429 FAX:(619) 285-6531
E-mail: gmvilke@ucsd.edu

Medical Director's Update for Base Station Physicians Committee –June, 2004

San Diego County EMS:

Steve Wood, Chief of Emergency Preparedness has taken a job with a consulting firm and has resigned from his duties with the County as of this month. Steve has served us well and we wish him luck in his future endeavor. Succession planning is in process.

San Diego County Medical Society EMS Oversight Committee has come to closure on the Guidelines for EIT turnover of the prehospital intubated patient. A copy has been included in this update.

Patient report turn-over guidelines are in the early phases of creation. The purpose is to establish a best practice expectation of paramedics giving report to the emergency department staff. This may include time limit expectations. It has been brought up as a topic to consider as the issue of medical control and treatment changes from the base hospital physician to the receiving physician upon arrival to the hospital. However, if the medics are unable to give turn-over to hospital staff in a timely manner (for various reasons) then who should be treating the patient if treatment is indicated?

The prehospital patient record (PPR) is to be left with the patient at the time of patient delivery. This is critical for the continuity of care for the patient. Discussion occurred at the meeting, to assist in determining barriers and possible solutions to getting PPRs left with the patient. The hospitals were encouraged to perform a real time audit in the ED (not retrospective medical records chart review) to determine if an issue exists, and if so,

contacting the transporting agency to try one-on-one to troubleshoot the problem. If this is not successful, consideration for use of a written record with minimum data set may need to be implemented to assure a written record is left with the patient (when the full record cannot be left).

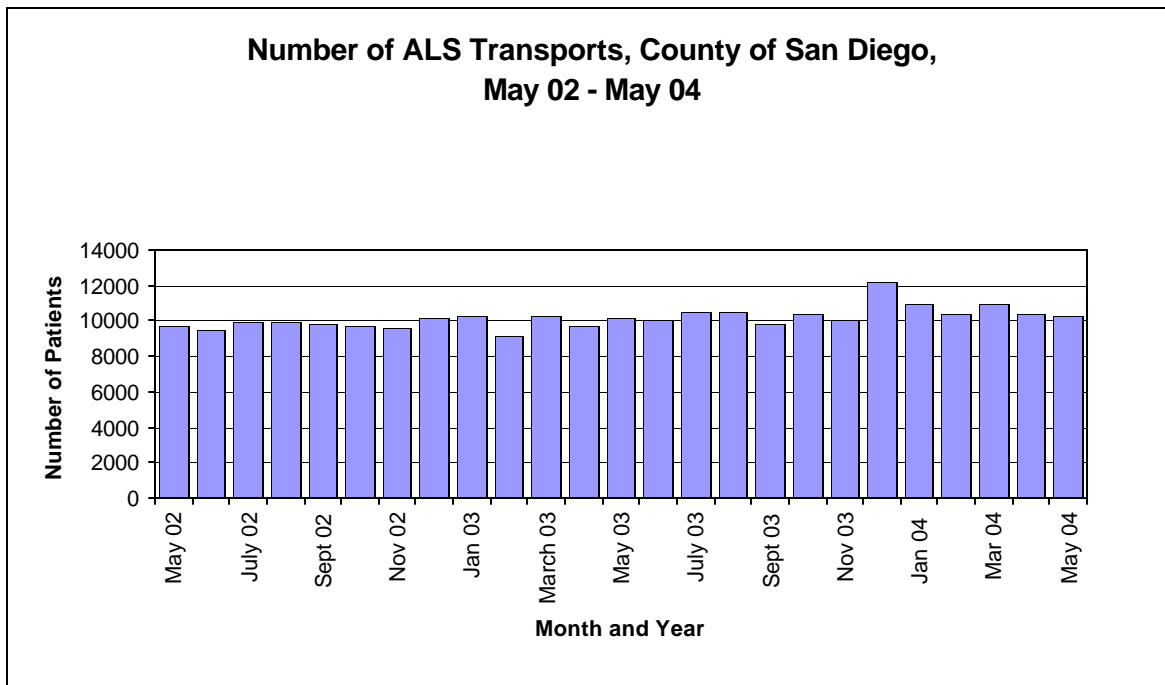
Cardiac interventional centers: A survey was sent to all receiving hospitals in San Diego County to assess for ability to treat patients arriving by paramedic with ST elevation myocardial infarction (STEMI) with emergency angioplasty. Responses are pending. Additionally, all prehospital ALS providers were surveyed to determine current capability to perform 12 lead EKG in the field.

EMS Games Reminder: Friday September 10th from 8am until 5pm. Contact Anne Marcotte with questions.

EMDAC

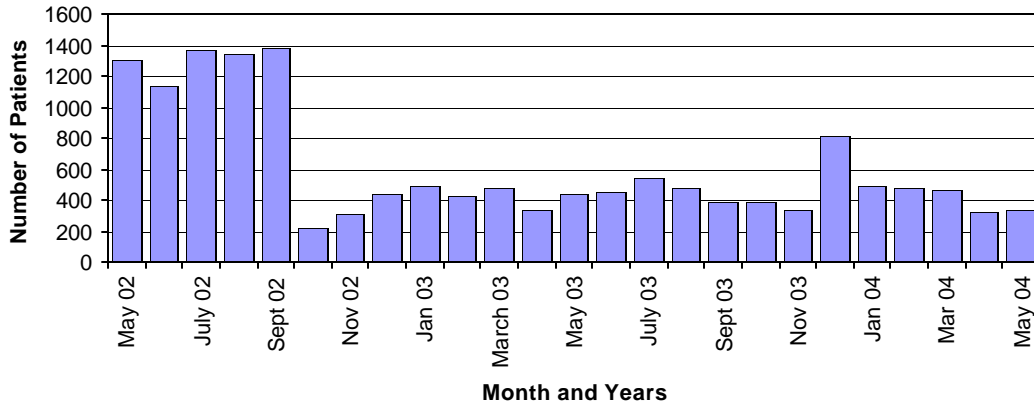
EMDAC and the EMS Commission are meeting on the 22nd and 23rd of this month.

Below is the patient destination data in graphic form



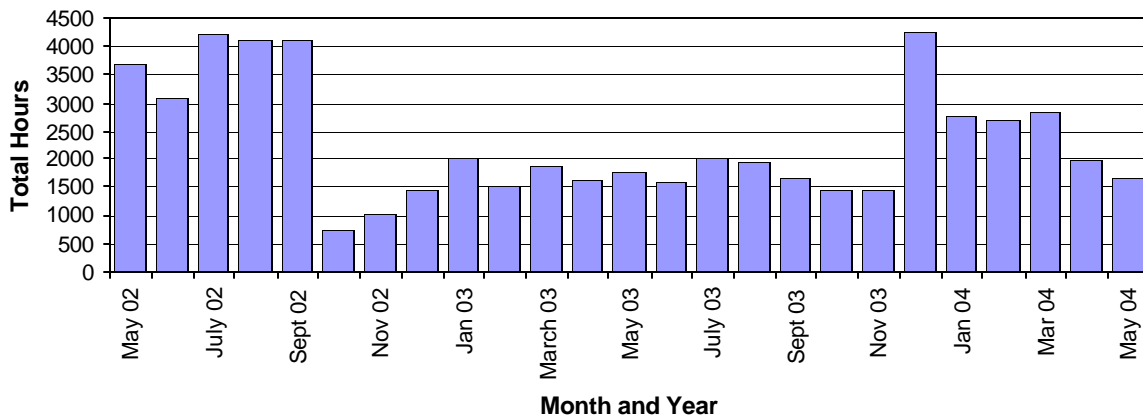
Source: County of San Diego, Health and Human Services Agency, Division of Emergency Medical Services, MICN Records, May 2002 – May 2004

Number of Patients who Bypassed the Requested Hospital, County of San Diego, May 02 - May 04



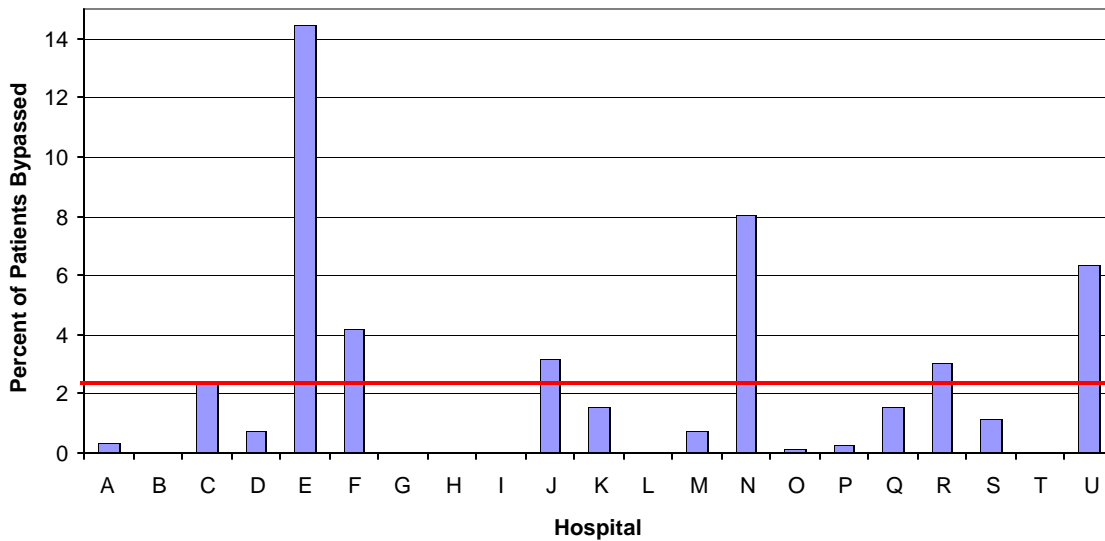
Source: County of San Diego, Health and Human Services Agency, Division of Emergency Medical Services, MICN Records, May 2002 – May 2004

Total Hours on Emergency Department Bypass, County of San Diego, May 02 - May 04



Source: County of San Diego, Health and Human Services Agency, Division of Emergency Medical Services, MICN Records, May 2002 – May 2004

Percent of Patients Bypassed per Hospital, May 2004



Note: line represents the mean value of percent of patients bypassed per hospital , May 2004

Source: County of San Diego, Health and Human Services Agency, Division of Emergency Medical Services, MICN Records,

Gary M. Vilke, M.D., FACEP, FAAEM
Medical Director