



# County of San Diego Quarterly STD Report

Issue No. 6; Data for April 1, 2009–June 30, 2009; Report prepared August 31, 2009



Table 1. STDs reported among County of San Diego residents, by quarter (April 1, 2009–June 30, 2009), and year to date.

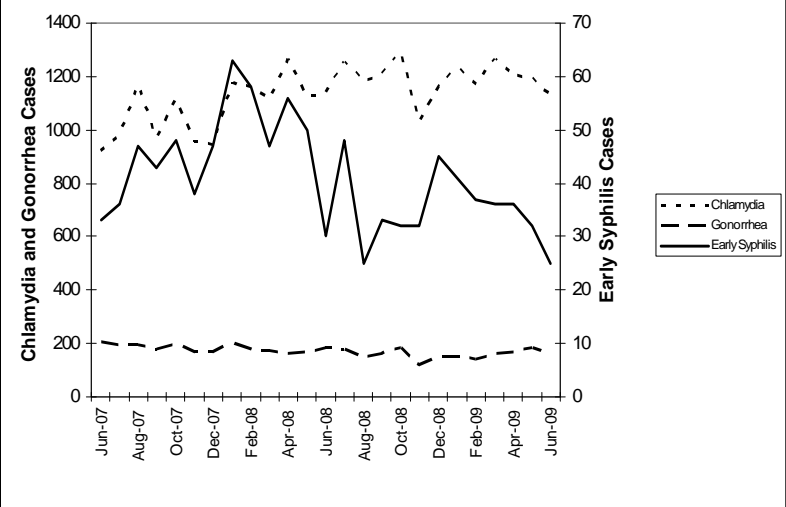
|                              | 2009    |      | 2008    |      |
|------------------------------|---------|------|---------|------|
|                              | Quarter | YTD  | Quarter | YTD  |
| Gonorrhea                    | 507     | 966  | 519     | 1071 |
| Male rectal gonorrhea        | 49      | 109  | 63      | 108  |
| Chlamydia                    | 3528    | 7198 | 3526    | 6977 |
| Male rectal chlamydia        | 74      | 152  | 66      | 125  |
| Early Syphilis (adult total) | 93      | 207  | 136     | 304  |
| Primary                      | 17      | 34   | 27      | 52   |
| Secondary                    | 51      | 98   | 69      | 147  |
| Early latent                 | 25      | 75   | 40      | 105  |
| Neurosyphilis*               | 2       | 3    | 7       | 12   |
| Congenital syphilis          | 0       | 0    | 1       | 4    |
| Pelvic Inflammatory Disease  | 14      | 35   | 16      | 41   |

Quarter is April 1, 2009–June 30, 2009

YTD: Year to Date

\*Includes confirmed and probable cases of neurosyphilis among cases of early syphilis only.

Figure 1. STDs reported among County of San Diego residents, by month. Scale for syphilis is different.



Note: All statistics are provisional. Morbidity is based on date of diagnosis. If date of diagnosis is not available for Chlamydia, gonorrhea, and pelvic inflammatory disease, date of specimen collection is used. Totals for past months may change due to delays in reporting from labs and providers.

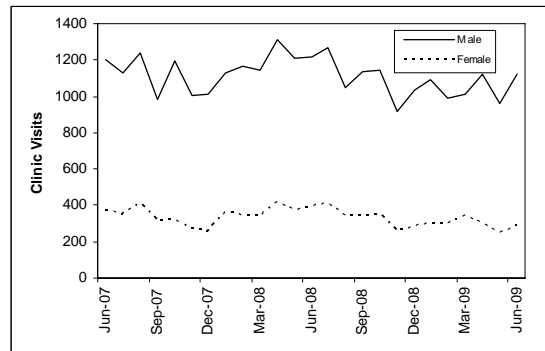


Figure 2. Monthly visits to all County of San Diego STD clinics, by gender.

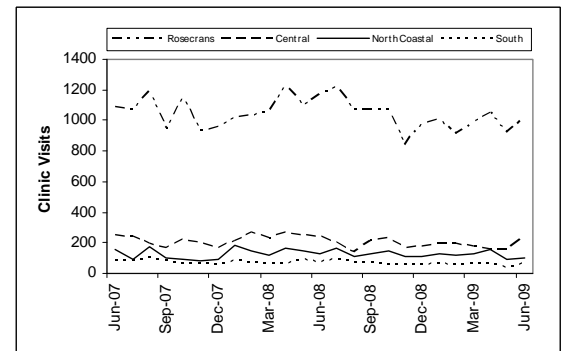


Figure 3. Monthly patient visits to County of San Diego STD clinics, by clinic site. Rosecrans is open five days per week, Central two days per week, and North Coastal and South one day per week.

## Syphilis Screening Blitz Targeting Men Who Have Sex with Men, April 2009

Primary and secondary syphilis cases in the County of San Diego increased 47% from 2006 (n=234) to 2008 (n=344), with most cases (78%) in 2008 continuing to occur in men who have sex with men (MSM). As part of a response to that increase, in April 2009 the County's HIV, STD, and Hepatitis Branch partnered with six community-based organizations, the UCSD Antiviral Research Center, and the California Department of Public Health to conduct a syphilis screening blitz targeting MSM.

During April 2009, 26 syphilis screening events were conducted at gay bars and clubs, at Balboa Park, and at clinics and included evening and weekend hours. Of 194 syphilis tests performed, 6 (3.1%) were reactive. One case of primary syphilis and two cases of secondary syphilis were identified. Of those testing, 48% said they had never before been tested for syphilis. Of 141 individuals reporting HIV status, 16% were HIV infected, of whom 30% said they had never before been tested for syphilis.

The County of San Diego recommends screening for syphilis (as well as for urethral, rectal and pharyngeal *Neisseria gonorrhoea* and *Chlamydia trachomatis* infections) every 3–6 months for sexually active MSM in nonmonogamous relationships. MSM at higher risk for syphilis include those who have multiple or anonymous partners, have sex in conjunction with illicit drug use, use methamphetamine, or whose sex partners participate in these activities. Clinicians should remain vigilant for syphilis, inquire about the gender of their patients' sex partners, and appropriately screen for syphilis. TG/KK

**Questions about community activities related to syphilis:** Tom Gray, 619-692-8835

**Questions about syphilis screening, diagnosis, or treatment:** Kenneth Katz, MD, STD Control Officer, 619-692-8394

**STD Clinical Consultation Pager:** 877-217-1816 (8 a.m.–5 p.m., Monday through Friday, except major holidays)

**Information about STD clinic hours:** [http://www.sdcounty.ca.gov/hhsa/programs/phs/hiv\\_std\\_hepatitis\\_branch/std\\_clinical\\_services.html](http://www.sdcounty.ca.gov/hhsa/programs/phs/hiv_std_hepatitis_branch/std_clinical_services.html)

**Provider STD Reporting:** 619-692-8520; fax 619-692-8541

**STD Clinic:** 619-692-8550; fax 619-692-8543