



# County of San Diego Monthly STD Report

Issue No. 9: Data through September 30, 2009; Report prepared November 24, 2009.



Table 1. STDs reported among San Diego County residents, by month (September 2009), and year to date.

	2009		2008	
	Sept	YTD	Sept	YTD
Gonorrhea	164	1407	164	1563
Female age ≤ 25	36	343	40	419
Male rectal gonorrhea	23	162	21	161
Chlamydia	1125	10750	1212	10624
Female age ≤ 25	600	5826	665	5799
Male rectal chlamydia	28	228	30	190
Early Syphilis (adult total)	18	293	33	411
Primary	1	47	12	78
Secondary	13	143	10	186
Early latent	4	103	11	147
Neurosyphilis*	0	3	1	14
Congenital syphilis	0	0	0	6
Pelvic Inflammatory Disease	8	60	3	56

YTD: Year to Date

\*Includes confirmed and probable cases of neurosyphilis among cases of early syphilis only.

Table 2. Selected STD cases and rates for San Diego County by age and race/ethnicity, January–September 2009.

	(All races)		Asian/PI		African American		Hispanic		White	
	cases	rate	cases	rate	cases	rate	cases	rate	cases	rate
<b>All ages</b>										
Chlamydia	10750	341.7	493	150.0	989	594.8	2357	250.7	1578	99.8
Gonorrhea	1407	44.7	42	12.8	185	111.3	171	18.2	150	9.5
Early syphilis	293	9.3	12	3.7	32	19.2	103	11.0	143	9.0
<b>Under 20 yrs</b>										
Chlamydia	2854	322.0	91	111.0	333	634.0	782	225.5	351	100.0
Gonorrhea	211	23.8	7	8.5	47	89.5	35	10.1	14	4.0
Early syphilis	15	1.7	0	0.0	2	3.8	11	3.2	2	0.6

Note: All data are provisional. Morbidity is based on date of diagnosis. If date of diagnosis is not available for Chlamydia, gonorrhea, or pelvic inflammatory disease, date of specimen collection is used. Totals for past months might change because of delays in reporting from labs and providers.

Figure 1. STDs reported among San Diego County residents, by month. Scale for syphilis is different.

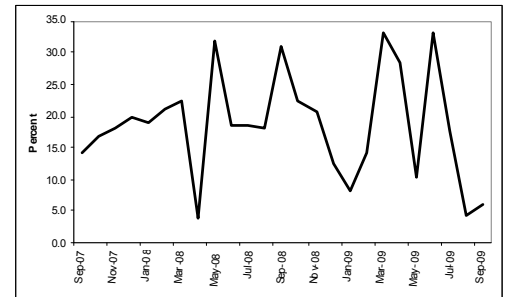
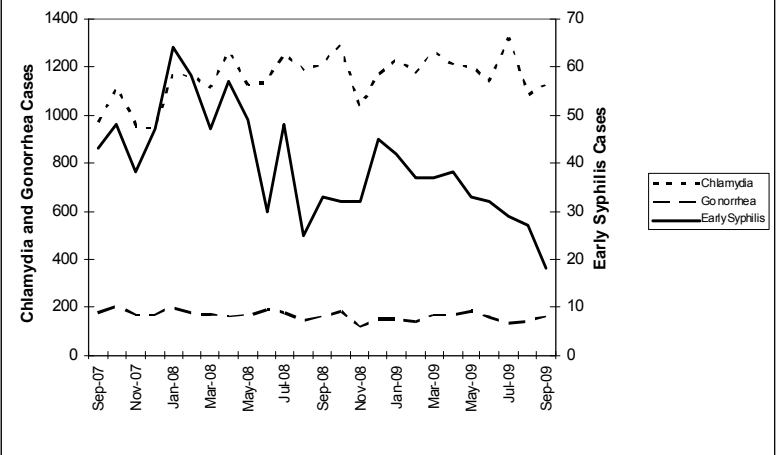


Figure 2. Percent of interviewed San Diego County patients with early syphilis reporting methamphetamine use in the year prior to diagnosis, by month.



Figure 3. Monthly visits to County STD clinics, by sex.

## EDITORIAL NOTE: STD/HIV Prevention in the Field

The County of San Diego, HIV, STD and Hepatitis Branch has a highly-trained, professional staff of field services communicable disease investigators (CDIs). Their primary roles are to investigate STDs by locating partners and other persons at increased risk of infection and to provide education and assure proper treatment in an effort to prevent transmission of disease and to reduce suffering from complications of STDs. CDIs follow up in person with most patients in San Diego County who are diagnosed with syphilis, which is the highest priority STD for CDIs because of its dramatic increase in the County in the past decade. CDIs can also assist in other areas, including field notification of HIV-positive test results for clients who have not returned for results, anonymous partner notification for HIV, and field notification for individuals who test positive for an STD but do not return to a provider's office for treatment. CDIs also work to increase STD and HIV awareness, knowledge and reporting by healthcare providers and are available as a resource to provide information and support in disease management, reporting, and client issues. To further contribute to syphilis prevention and control in San Diego County, healthcare providers should inform patients diagnosed with syphilis to work with CDIs who will be contacting them for follow up./HA

For more information about HIV/STD Field Services CDIs, please call (619) 692-8501.

**Information about reporting diseases to the COSD:** <http://www.co.san-diego.ca.us/hhsa/programs/phs/documents/CMR.pdf>

**STD Clinical Consultation Pager:** (877) 217-1816 (8 a.m.–5 p.m., Monday through Friday, except major holidays)

**Information about STD clinic hours:** [http://www.sdcounty.ca.gov/hhsa/programs/phs/hiv\\_std\\_hepatitis\\_branch/std\\_clinical\\_services.html](http://www.sdcounty.ca.gov/hhsa/programs/phs/hiv_std_hepatitis_branch/std_clinical_services.html)

**Provider STD Reporting:** (619) 692-8520; fax 619-692-8541

**STD Clinic:** (619) 692-8550; fax (619) 692-8543