



# County of San Diego Monthly STD Report

Issue No. 10: Data through October 31, 2009; Report prepared December 30, 2009.



Table 1. STDs reported among San Diego County residents, by month (October 2009), and year to date.

	2009		2008	
	Oct	YTD	Oct	YTD
Gonorrhea	137	1544	183	1746
Female age ≤ 25	29	374	51	470
Male rectal gonorrhea	16	177	23	184
Chlamydia	1206	12041	1289	11915
Female age ≤ 25	623	6488	693	6492
Male rectal chlamydia	32	260	21	211
Early Syphilis (adult total)	29	327	32	442
Primary	8	57	6	84
Secondary	14	159	17	203
Early latent	7	111	9	155
Neurosyphilis*	0	4	1	15
Congenital syphilis	0	4	1	6
Pelvic Inflammatory Disease	6	66	7	63
HIV Infection				
HIV (not AIDS)	50	492	44	467
AIDS	34	372	36	362

YTD: Year to Date

\*Includes confirmed and probable cases of neurosyphilis among cases of early syphilis only.

Table 2. Selected STD cases and rates for San Diego County by age and race/ethnicity, January–October 2009.

	(All races)		Asian/PI		African American		Hispanic		White	
	cases	rate	cases	rate	cases	rate	cases	rate	cases	rate
<b>All ages</b>										
Chlamydia	12041	382.7	551	167.7	1103	663.3	2634	280.2	1791	113.3
Gonorrhea	1544	49.1	44	13.4	194	116.7	187	19.9	192	12.1
Early syphilis	327	10.4	12	3.7	36	21.6	115	12.2	160	10.1
<b>Under 20 yrs</b>										
Chlamydia	3142	354.5	103	125.6	363	691.1	865	249.4	397	113.1
Gonorrhea	223	25.2	7	8.5	47	89.5	40	11.5	16	4.6
Early syphilis	16	1.8	0	0.0	2	3.8	12	3.5	2	0.6

Note: All data are provisional. Morbidity is based on date of diagnosis. If date of diagnosis is not available for Chlamydia, gonorrhea, or pelvic inflammatory disease, date of specimen collection is used. Totals for past months might change because of delays in reporting from labs and providers.

Figure 1. STDs reported among San Diego County residents, by month. Scale for syphilis is different.

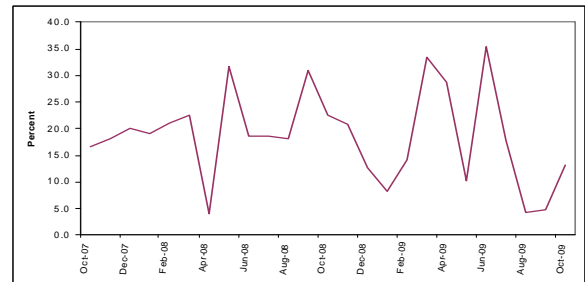
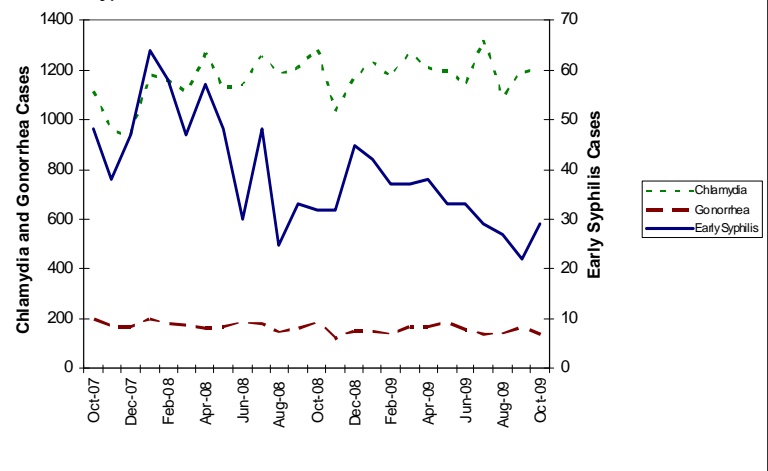


Figure 2. Percent of interviewed San Diego County patients with early syphilis reporting methamphetamine use in the year prior to diagnosis, by month.

## EDITORIAL NOTE: EXPRESS Visits at the County of San Diego's STD Clinic on Rosecrans Street in Point Loma

The County of San Diego's STD Clinic on Rosecrans Street sees nearly 13,000 clients/year, or more than 50 clients/day on average. The downside of that large number of clients is that patients sometimes face long waiting times before being seen.

To reduce waiting times, the Rosecrans STD Clinic launched "EXPRESS visits" in November 2009. Modeled after successful programs in Denver and other cities, EXPRESS visits enable the clinic to quickly identify and serve clients who need less intensive clinic services, including not undergoing a physical examination by a clinician. Clients eligible for EXPRESS visits include those who would like testing for STDs (including HIV), hepatitis A and/or hepatitis B vaccination, results from past STD and/or HIV tests, or who require treatment after testing positive for an asymptomatic STD at a prior visit. Clients who are symptomatic, who are sexual contacts to individuals with STDs, or who are pregnant are not eligible for EXPRESS visits.

During November 24, 2009–December 24, 2009, 23% of clients at the Rosecrans STD clinic had an EXPRESS visit. To gauge patient understanding of and satisfaction with EXPRESS visits, the clinic surveyed clients who had an EXPRESS visit. Among 50 clients responding to the survey, the vast majority responded very positively to EXPRESS visits (Figure 3). /KK

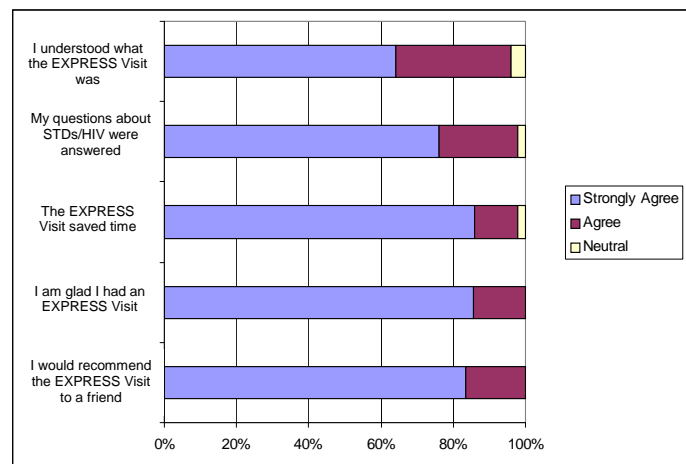


Figure 3. Responses (n=50) to a survey about EXPRESS Visits given to County of San Diego STD Clinic patients who received an EXPRESS Visit between November 20, 2009 and December 15, 2009.

### For more information about EXPRESS visits and STD clinic hours:

[http://www.sdcounty.ca.gov/hhsa/programs/phs/hiv\\_std\\_hepatitis\\_branch/std\\_clinical\\_services.html](http://www.sdcounty.ca.gov/hhsa/programs/phs/hiv_std_hepatitis_branch/std_clinical_services.html)

STD Clinical Consultation Pager: (877) 217-1816 (8 a.m.–5 p.m., Monday through Friday, except major holidays)

Provider STD Reporting: (619) 692-8520; fax 619-692-8541

STD Clinic: (619) 692-8550; fax (619) 692-8543