

San Diego, California — 1998 (N=179)

Figure A. Age of GISP participants, in years, 1998

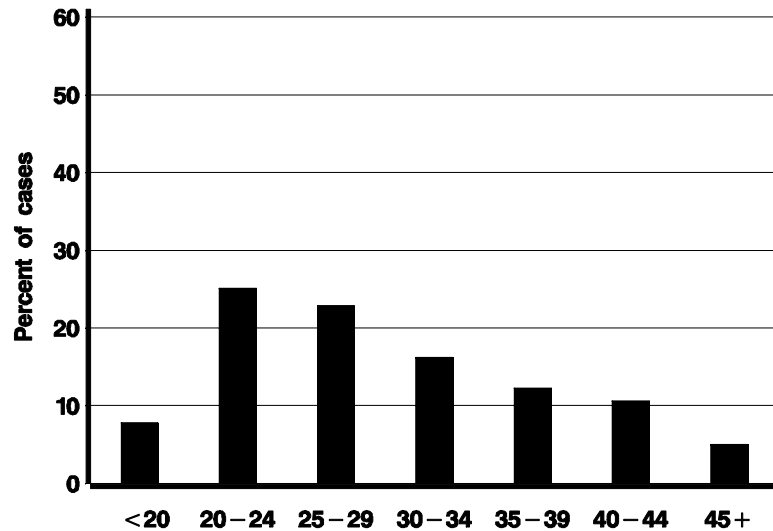


Figure B. Race/ethnicity of GISP participants, 1998

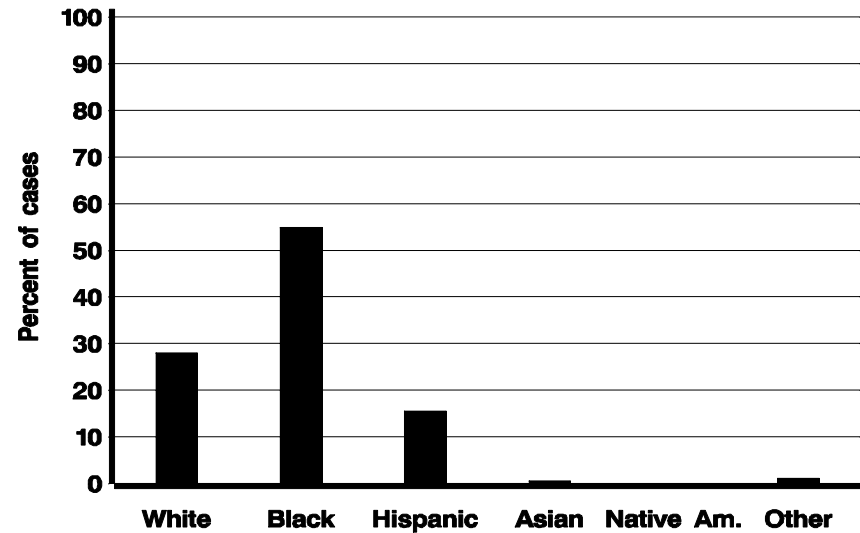


Figure C. Percentage of GISP participants identifying as men who have sex with men

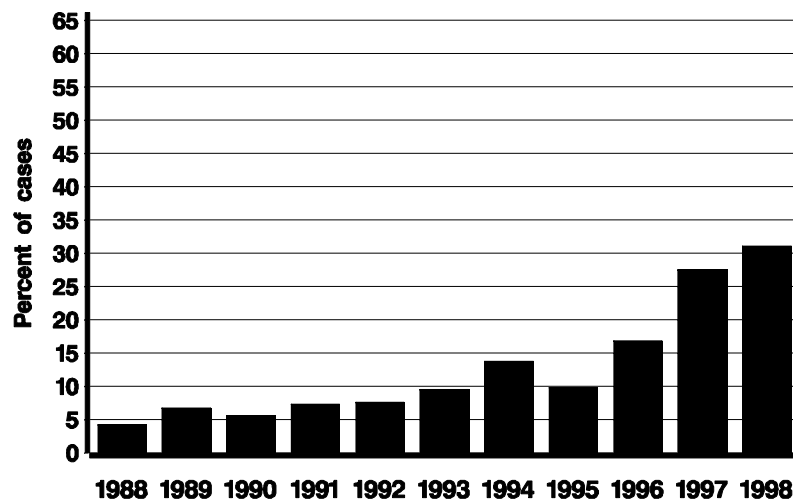
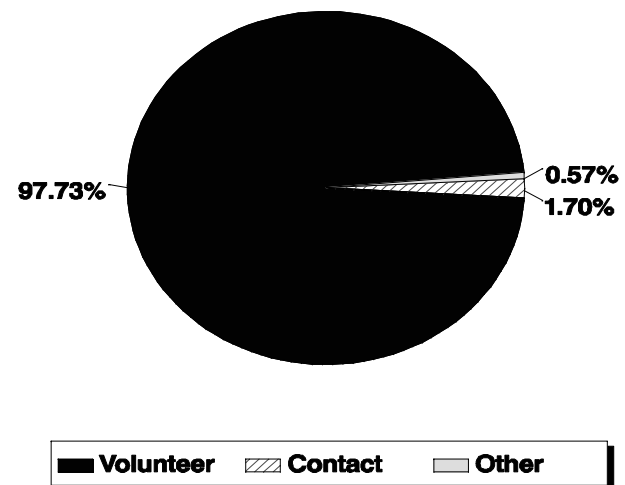
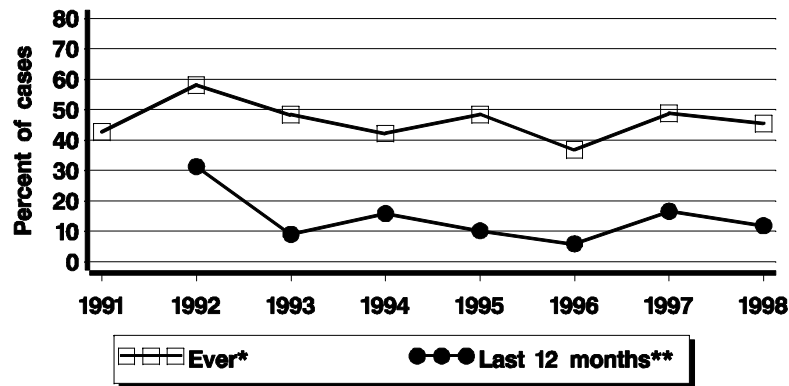


Figure D. Reason for visit among GISP participants, 1998



San Diego, California — 1998 (N=179)

Figure E. Previous episode of gonorrhea among GISP participants



*Data first collected in 1991.

**Data first collected in 1992.

Note: Data points not shown when >30% data missing.

Figure F. Treatment given to GISP participants, 1998

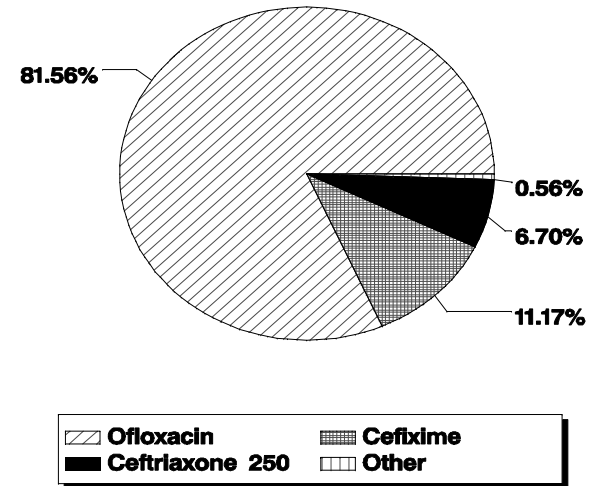
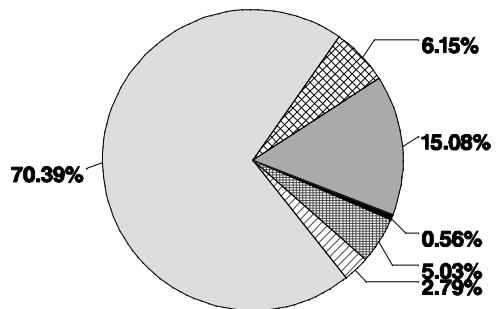
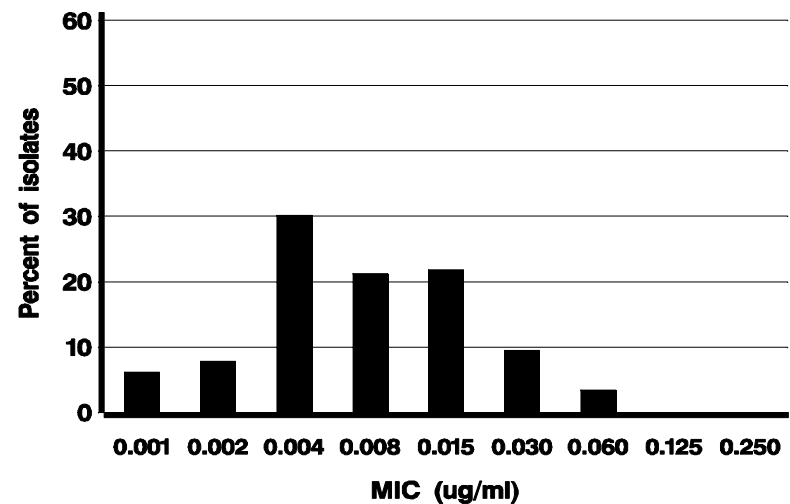


Figure G. Resistance to penicillin and tetracycline among GISP isolates, 1998



Pen & Tet Suscep	PPNG	TRNG
PenR	TetR	CMRNG

Figure H. Ceftriaxone minimum inhibitory concentrations (MIC) among GISP isolates, 1998



San Diego, California — 1998 (N=179)

Figure I. Cefixime minimum inhibitory concentrations (MIC) among GISP isolates, 1998

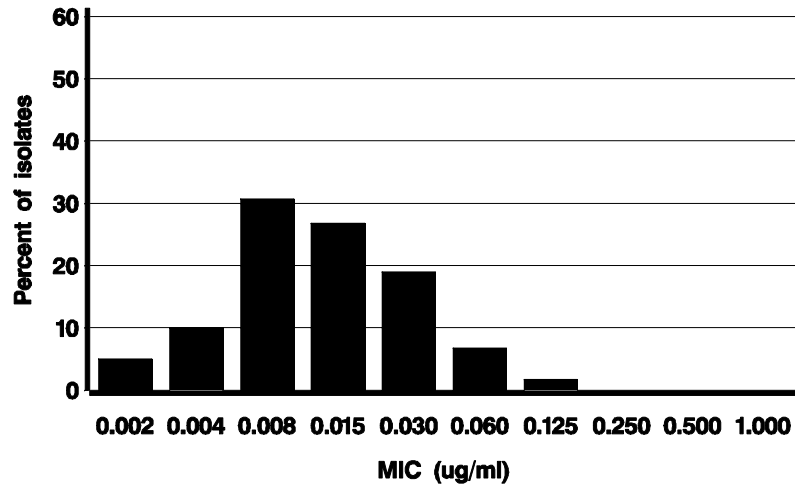
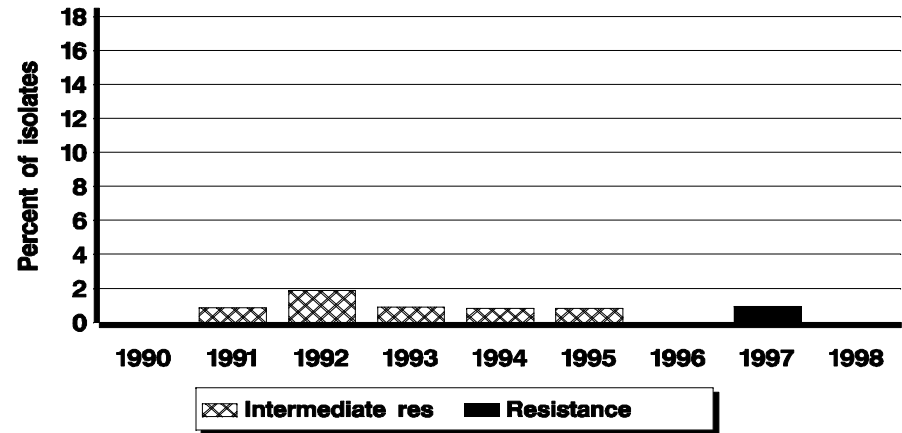


Figure J. Intermediate resistance and resistance to ciprofloxacin among GISP isolates



Note: Susceptibility to ciprofloxacin first measured in 1990.

Figure K. Ciprofloxacin minimum inhibitory concentrations (MIC) among GISP isolates, 1998

