

Office of AIDS

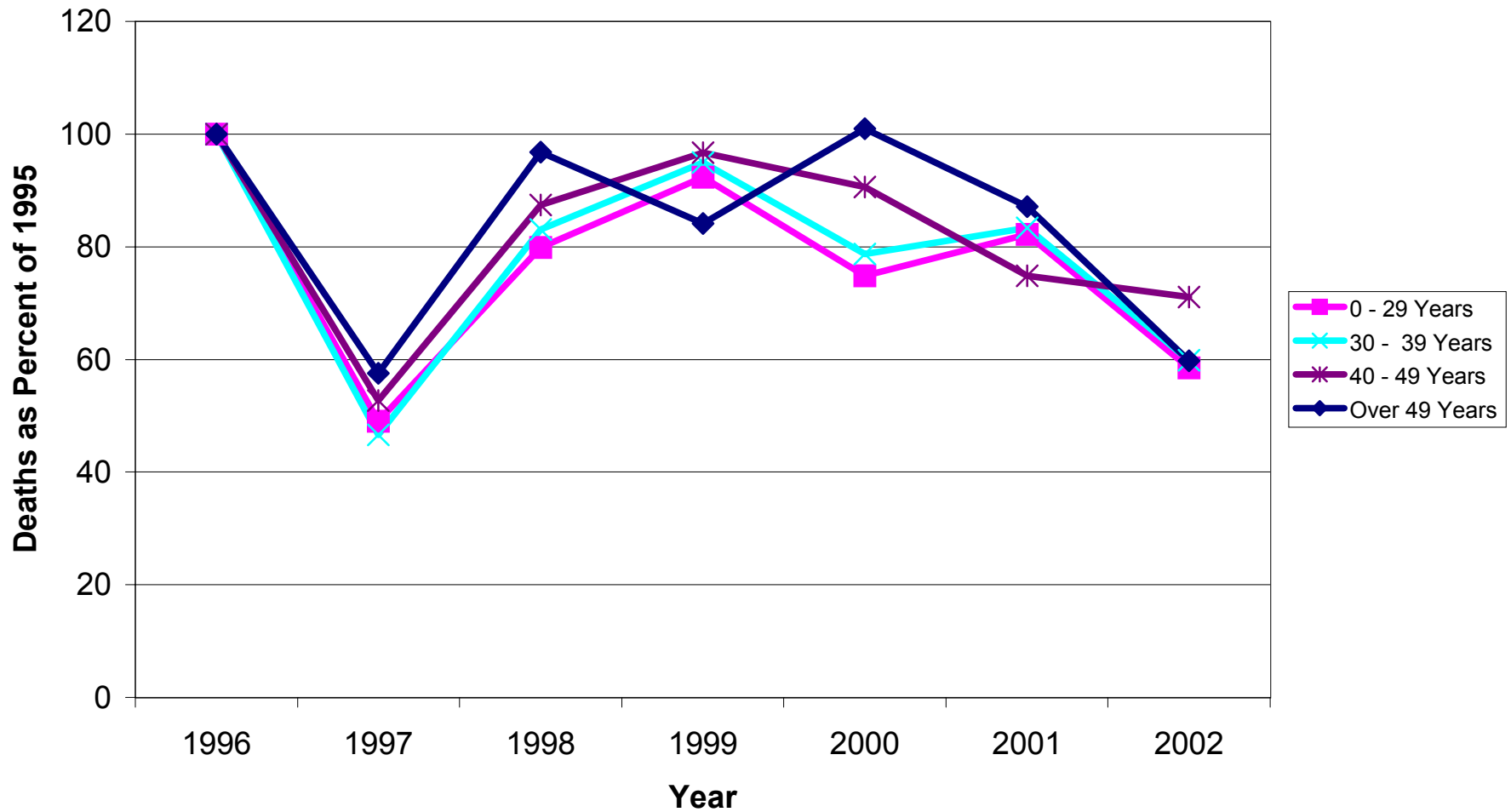
Death Statistics as of 12/31/2002:

The graphs are presented in two formats:

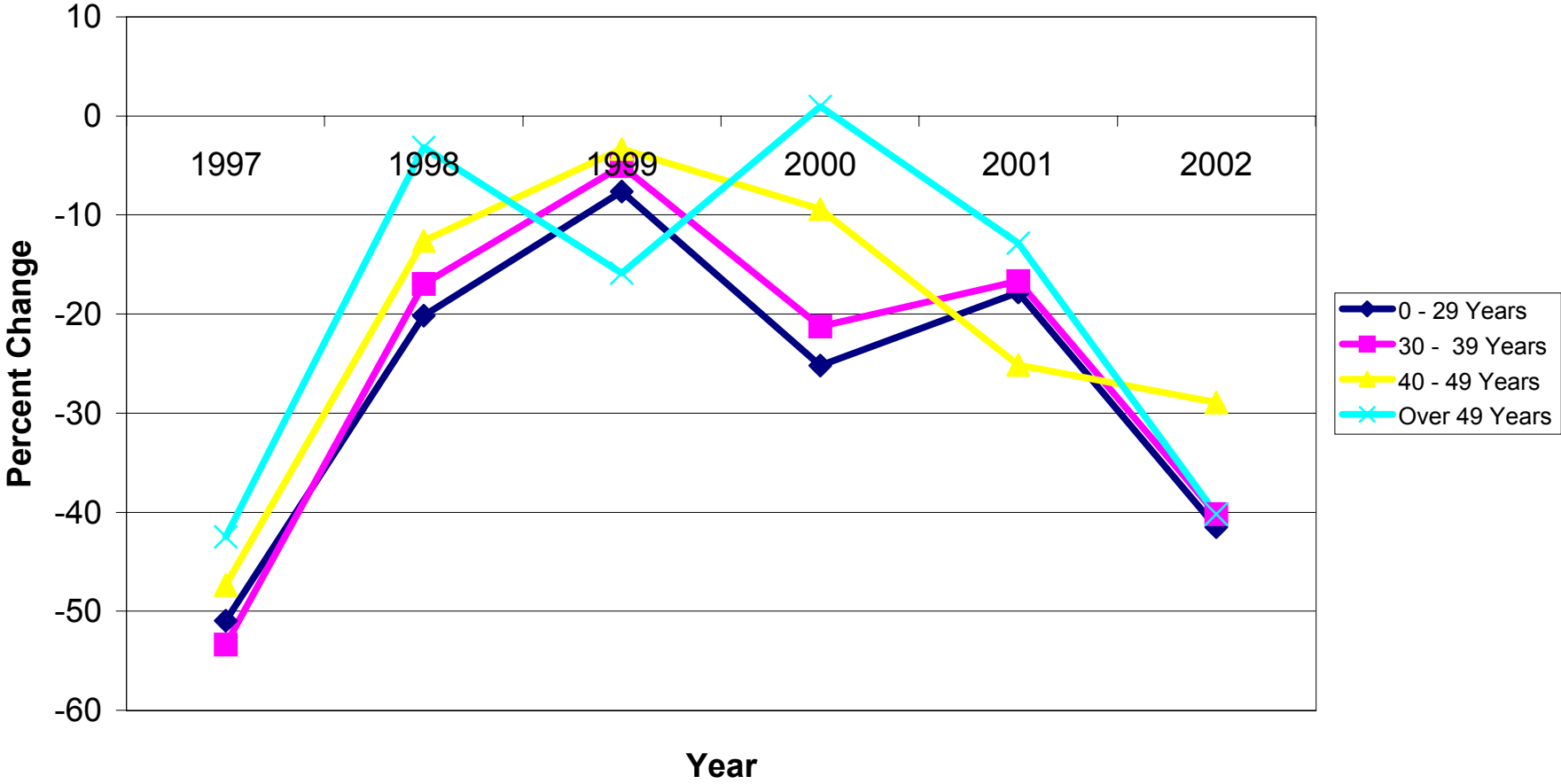
"Normalized" where 1996 is used as a base year for comparison with subsequent years.

"Percent Change" which compares the current year with previous years.

California -- Deaths Among People with AIDS by Age Group and Year, 1996-2002, With 1996=100



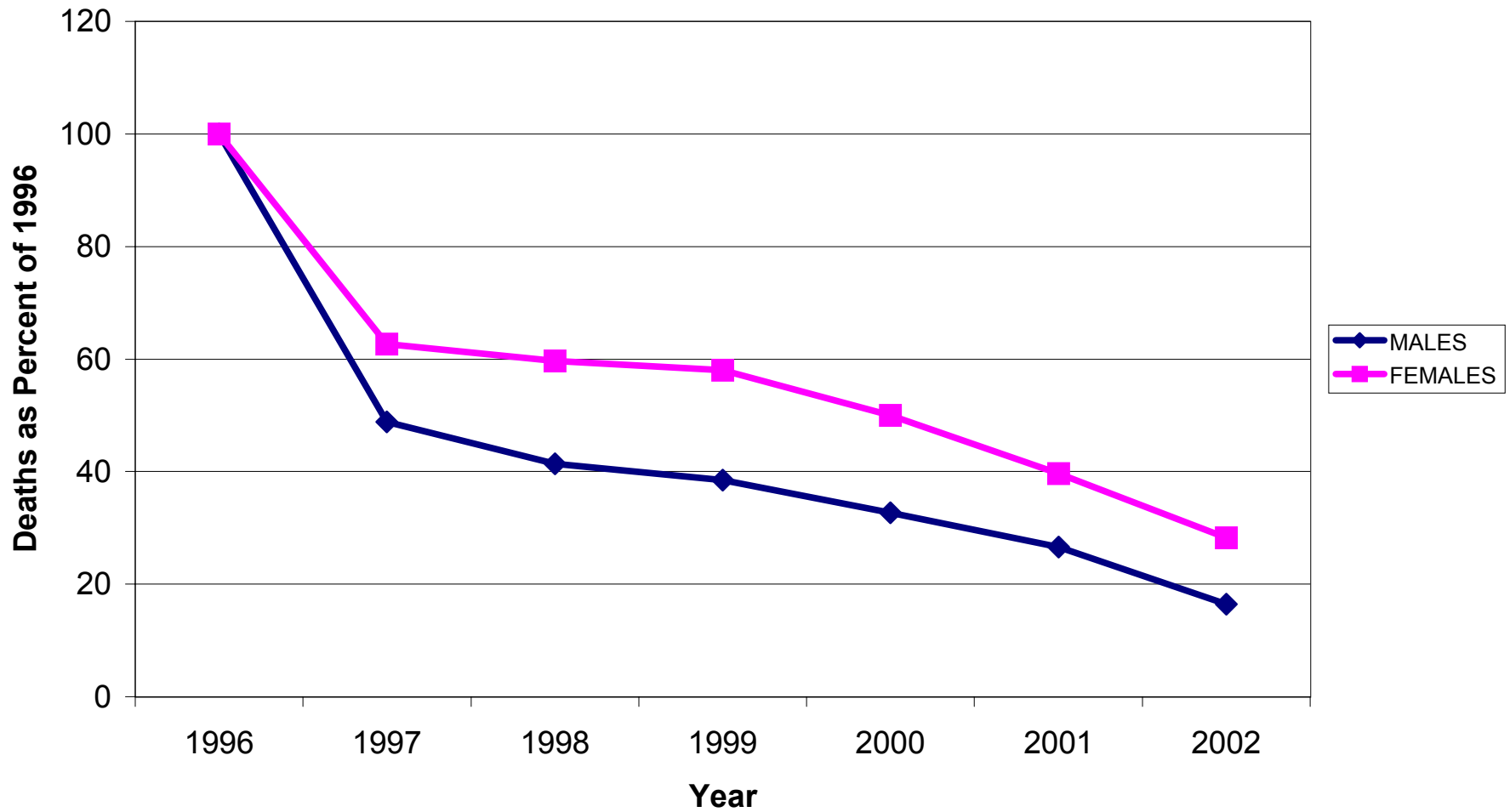
California -- Percent Change (Current Year vs. Previous Year) in Deaths Among People with AIDS by Age 1997-2002



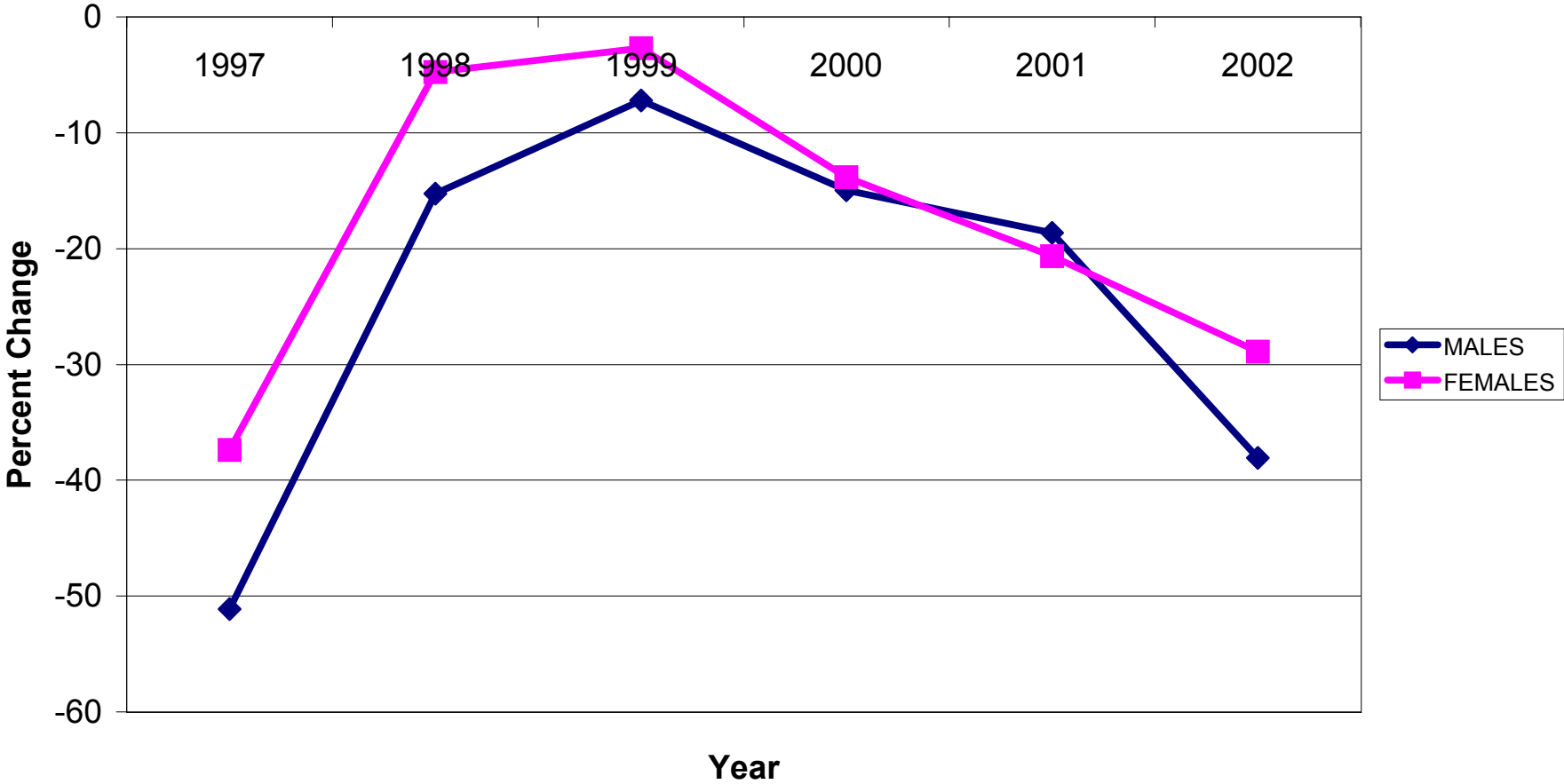
Source: Office of AIDS, California Department of Health Services

Data as of 12/31/2002

California -- Deaths Among People with AIDS by Gender and Year, 1996-2002, With 1996=100



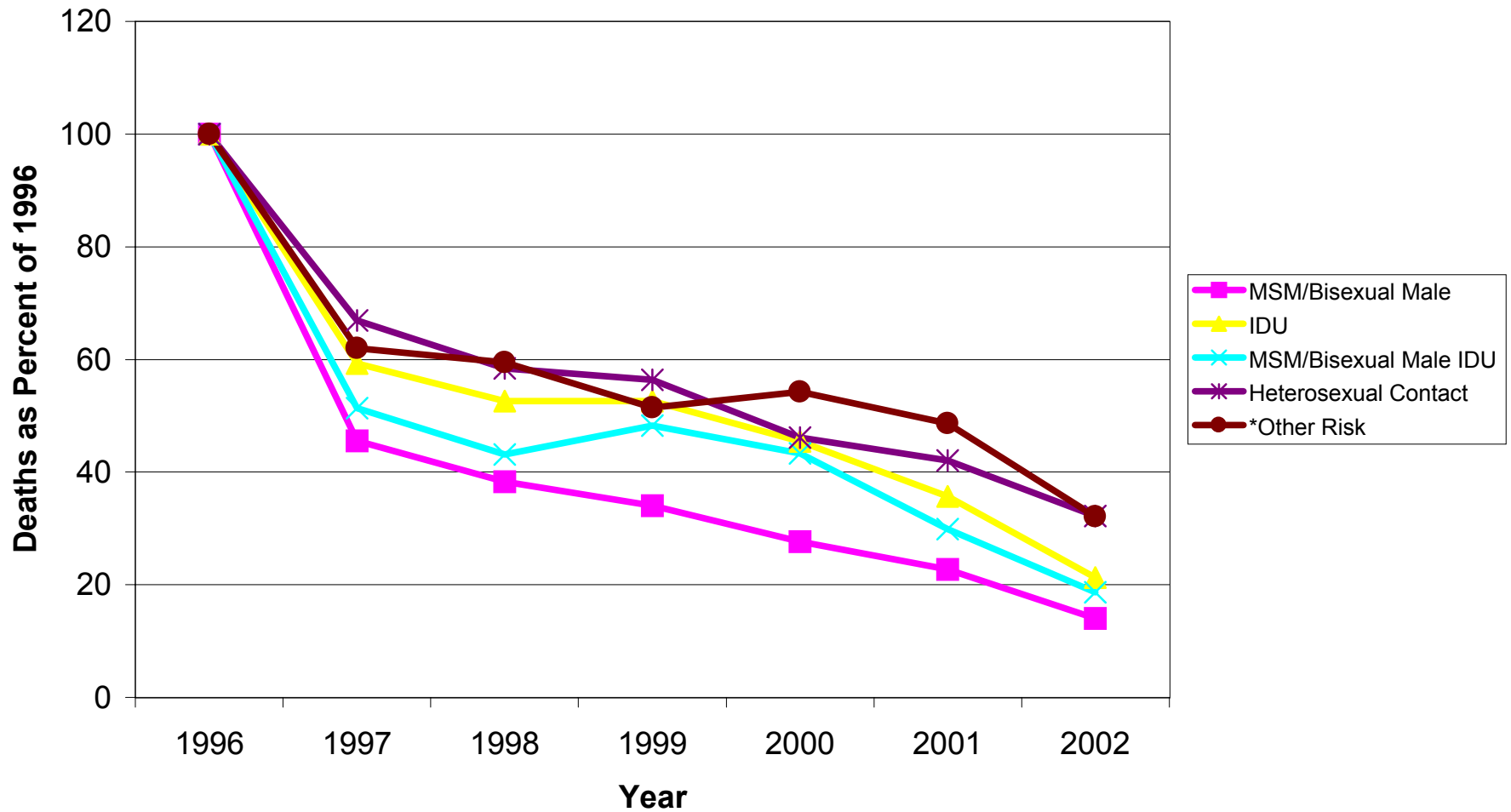
California -- Percent Change (Current Year vs. Previous Year) in Deaths Among People with AIDS by Gender 1997-2002



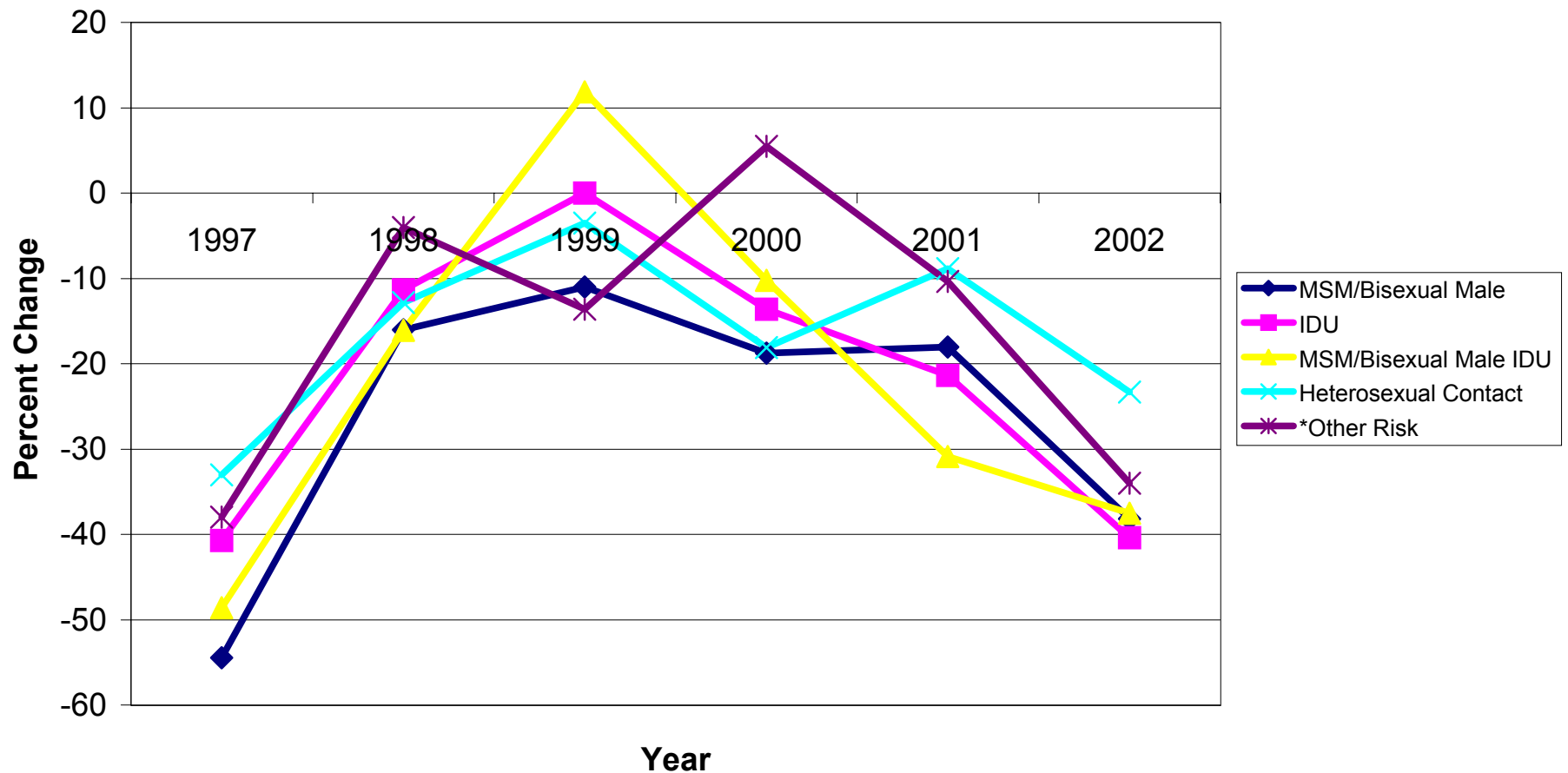
Source: Office of AIDS, California Department of Health Services

Data as of 12/31/2002

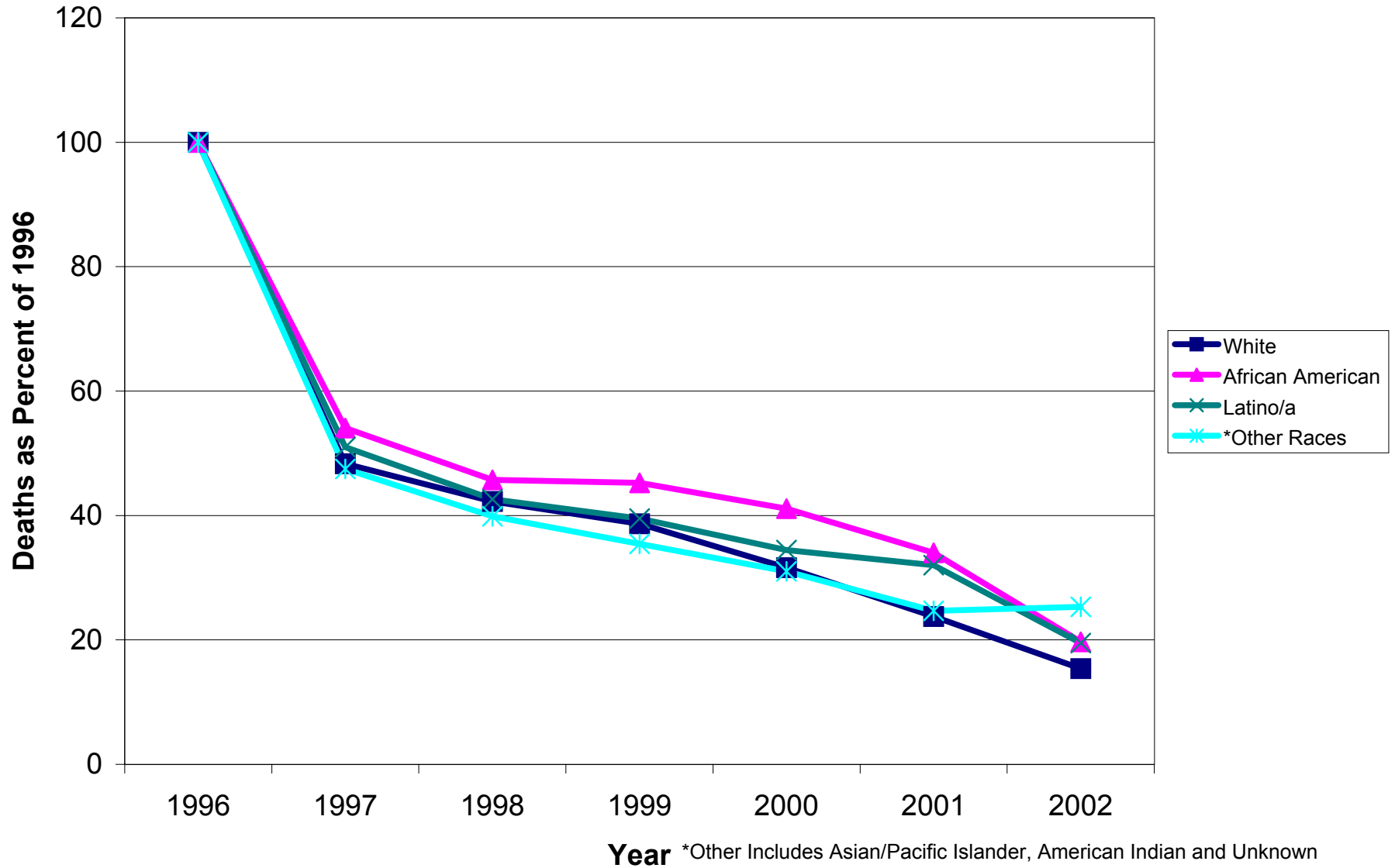
California -- Deaths Among People with AIDS by Mode of Exposure and Year, 1996-2002, With 1996=100



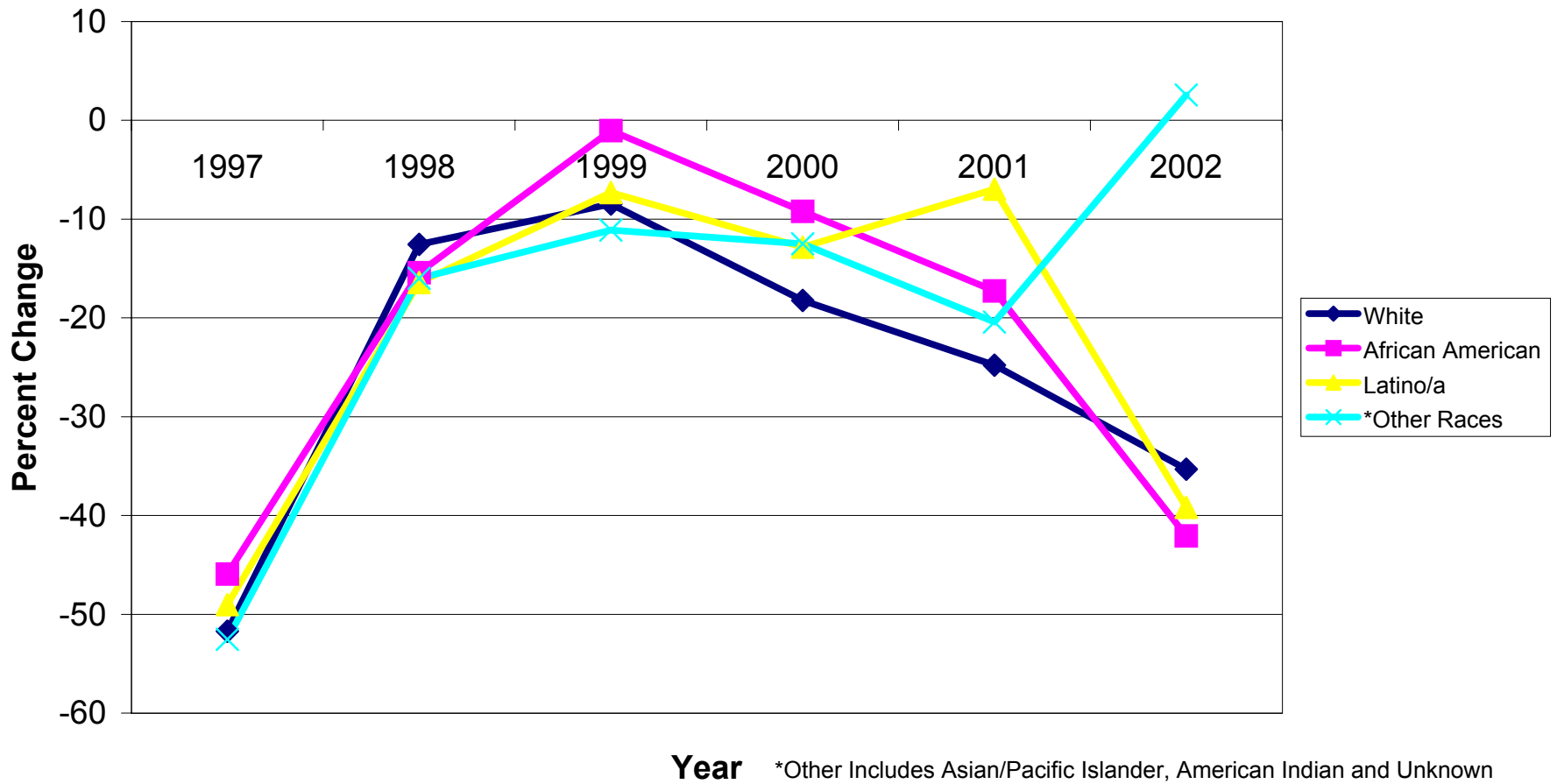
California -- Percent Change (Current Year vs. Previous Year) in Deaths Among People with AIDS by Mode of Exposure 1997-2002



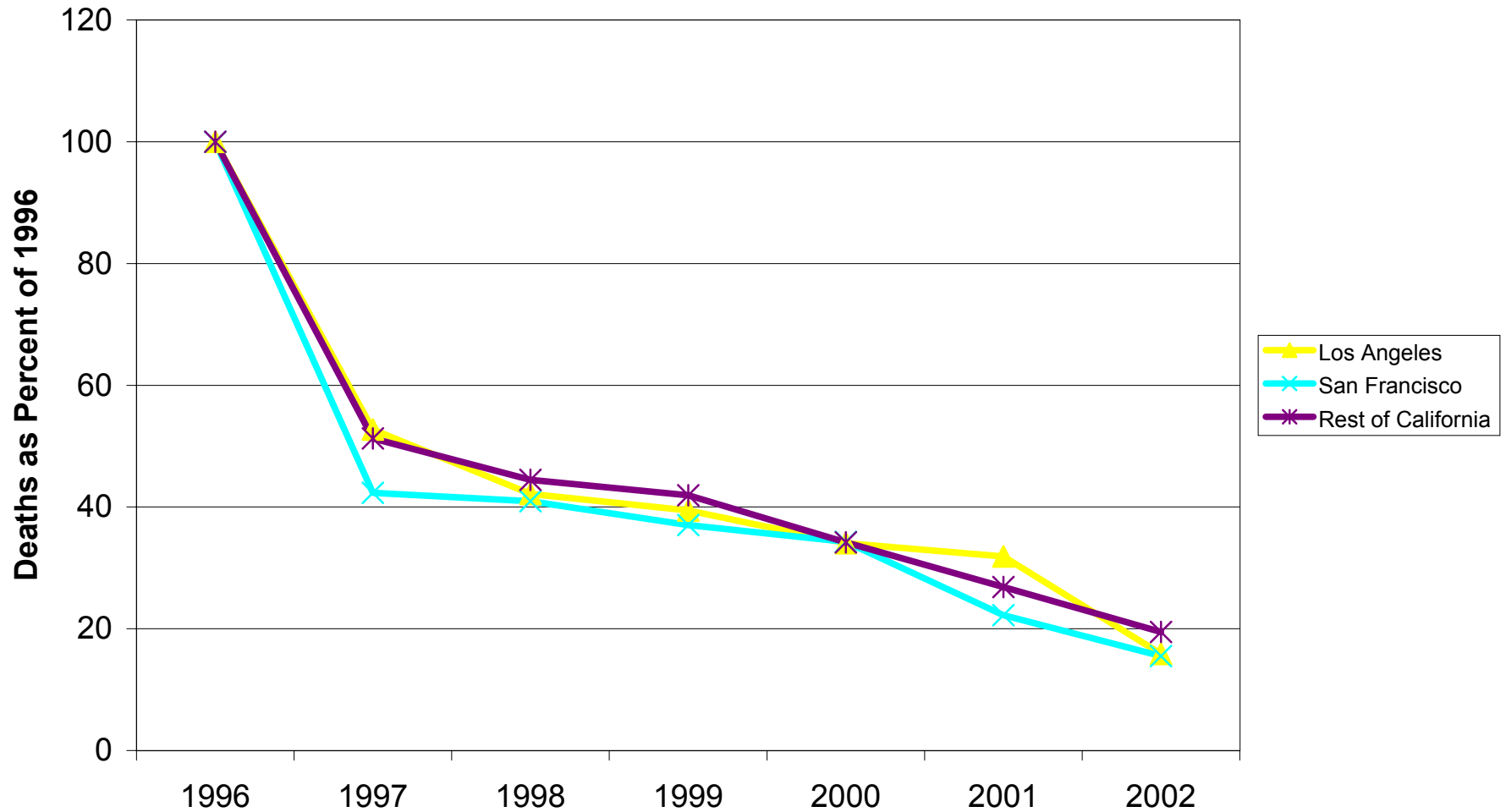
California -- Deaths Among People with AIDS by Race/Ethnicity and Year, 1996-2002, With 1996=100



California -- Percent Change (Current Year vs. Previous Year) in Deaths Among People with AIDS by Race/Ethnicity 1997-2002



California -- Deaths Among People with AIDS by Regions, 1996-2002, With 1996=100



California -- Percent Change (Current Year vs. Previous Year) in Deaths Among People with AIDS by Region 1997-2002

