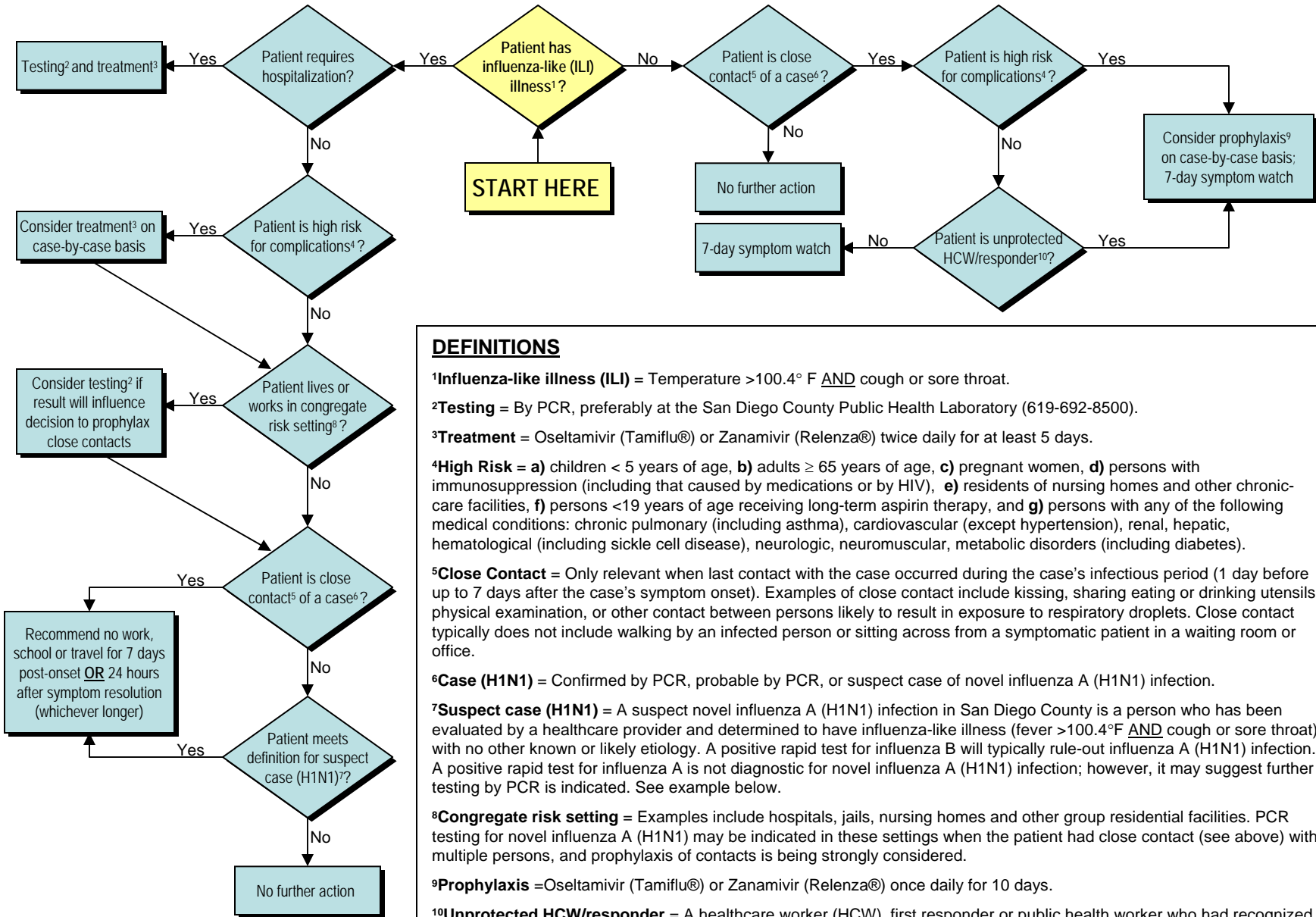


Interim Guidance on Screening for Novel Influenza A (H1N1) as of 6/23/09

COLOR VERSION



DEFINITIONS

¹**Influenza-like illness (ILI)** = Temperature >100.4° F AND cough or sore throat.

²**Testing** = By PCR, preferably at the San Diego County Public Health Laboratory (619-692-8500).

³**Treatment** = Oseltamivir (Tamiflu®) or Zanamivir (Relenza®) twice daily for at least 5 days.

⁴**High Risk** = **a)** children < 5 years of age, **b)** adults ≥ 65 years of age, **c)** pregnant women, **d)** persons with immunosuppression (including that caused by medications or by HIV), **e)** residents of nursing homes and other chronic-care facilities, **f)** persons <19 years of age receiving long-term aspirin therapy, and **g)** persons with any of the following medical conditions: chronic pulmonary (including asthma), cardiovascular (except hypertension), renal, hepatic, hematological (including sickle cell disease), neurologic, neuromuscular, metabolic disorders (including diabetes).

⁵**Close Contact** = Only relevant when last contact with the case occurred during the case's infectious period (1 day before up to 7 days after the case's symptom onset). Examples of close contact include kissing, sharing eating or drinking utensils, physical examination, or other contact between persons likely to result in exposure to respiratory droplets. Close contact typically does not include walking by an infected person or sitting across from a symptomatic patient in a waiting room or office.

⁶**Case (H1N1)** = Confirmed by PCR, probable by PCR, or suspect case of novel influenza A (H1N1) infection.

⁷**Suspect case (H1N1)** = A suspect novel influenza A (H1N1) infection in San Diego County is a person who has been evaluated by a healthcare provider and determined to have influenza-like illness (fever >100.4°F AND cough or sore throat) with no other known or likely etiology. A positive rapid test for influenza B will typically rule-out influenza A (H1N1) infection. A positive rapid test for influenza A is not diagnostic for novel influenza A (H1N1) infection; however, it may suggest further testing by PCR is indicated. See example below.

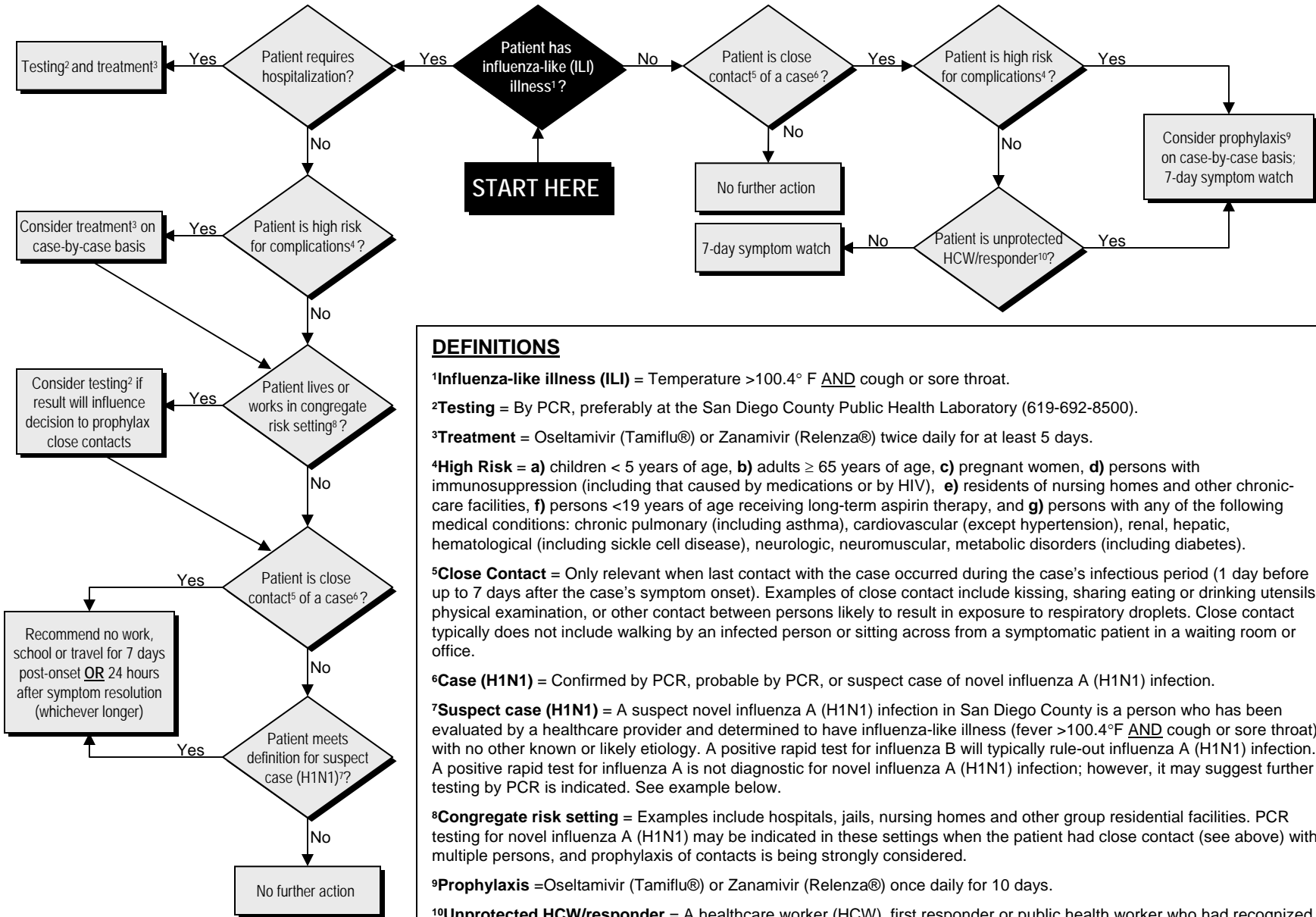
⁸**Congregate risk setting** = Examples include hospitals, jails, nursing homes and other group residential facilities. PCR testing for novel influenza A (H1N1) may be indicated in these settings when the patient had close contact (see above) with multiple persons, and prophylaxis of contacts is being strongly considered.

⁹**Prophylaxis** = Oseltamivir (Tamiflu®) or Zanamivir (Relenza®) once daily for 10 days.

¹⁰**Unprotected HCW/responder** = A healthcare worker (HCW), first responder or public health worker who had recognized, unprotected close contact (see above) with a confirmed, probable or suspect case of novel influenza A (H1N1) infection.

Interim Guidance on Screening for Novel Influenza A (H1N1) as of 6/23/09

BLACK AND WHITE VERSION



DEFINITIONS

¹**Influenza-like illness (ILI)** = Temperature >100.4° F AND cough or sore throat.

²**Testing** = By PCR, preferably at the San Diego County Public Health Laboratory (619-692-8500).

³**Treatment** = Oseltamivir (Tamiflu®) or Zanamivir (Relenza®) twice daily for at least 5 days.

⁴**High Risk** = **a)** children < 5 years of age, **b)** adults ≥ 65 years of age, **c)** pregnant women, **d)** persons with immunosuppression (including that caused by medications or by HIV), **e)** residents of nursing homes and other chronic-care facilities, **f)** persons <19 years of age receiving long-term aspirin therapy, and **g)** persons with any of the following medical conditions: chronic pulmonary (including asthma), cardiovascular (except hypertension), renal, hepatic, hematological (including sickle cell disease), neurologic, neuromuscular, metabolic disorders (including diabetes).

⁵**Close Contact** = Only relevant when last contact with the case occurred during the case's infectious period (1 day before up to 7 days after the case's symptom onset). Examples of close contact include kissing, sharing eating or drinking utensils, physical examination, or other contact between persons likely to result in exposure to respiratory droplets. Close contact typically does not include walking by an infected person or sitting across from a symptomatic patient in a waiting room or office.

⁶**Case (H1N1)** = Confirmed by PCR, probable by PCR, or suspect case of novel influenza A (H1N1) infection.

⁷**Suspect case (H1N1)** = A suspect novel influenza A (H1N1) infection in San Diego County is a person who has been evaluated by a healthcare provider and determined to have influenza-like illness (fever >100.4°F AND cough or sore throat) with no other known or likely etiology. A positive rapid test for influenza B will typically rule-out influenza A (H1N1) infection. A positive rapid test for influenza A is not diagnostic for novel influenza A (H1N1) infection; however, it may suggest further testing by PCR is indicated. See example below.

⁸**Congregate risk setting** = Examples include hospitals, jails, nursing homes and other group residential facilities. PCR testing for novel influenza A (H1N1) may be indicated in these settings when the patient had close contact (see above) with multiple persons, and prophylaxis of contacts is being strongly considered.

⁹**Prophylaxis** = Oseltamivir (Tamiflu®) or Zanamivir (Relenza®) once daily for 10 days.

¹⁰**Unprotected HCW/responder** = A healthcare worker (HCW), first responder or public health worker who had recognized, unprotected close contact (see above) with a confirmed, probable or suspect case of novel influenza A (H1N1) infection.