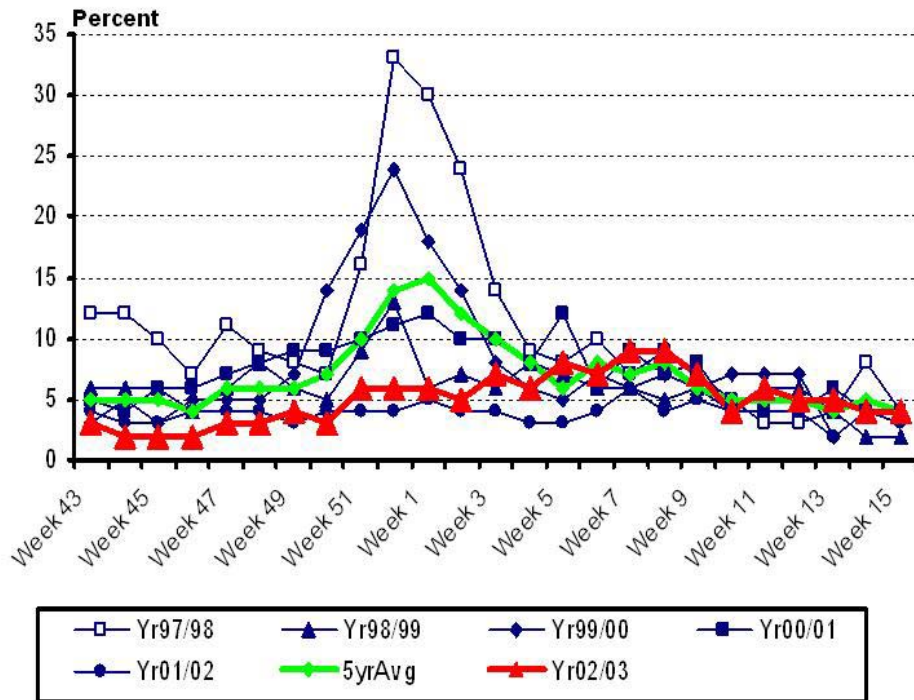


Influenza Watch – San Diego County

2002-03 Influenza Season Summary

The 2002-03 influenza season was mild in San Diego County and mild to moderate across the United States. Both types A (H3N2) and B influenza were detected in San Diego County. Influenza-like illness visits to sentinel emergency departments during this season were at lower levels when compared to previous years.

**Influenza-Like-Illness Visits to
Sentinel Emergency Departments, 2002-03**



Physicians and laboratories are encouraged to report positive influenza detections to the Public Health Laboratory by phone (619-692-8500) or fax (619-692-8558) and when possible, to submit specimens for viral culture and isolate subtyping.

San Diego County Community Epidemiology Division, Immunization Program, and Public Health Laboratory, in cooperation with local hospitals and medical professionals, have established a multi-prong approach to detection of influenza in San Diego County. Because influenza is not a reportable disease, surveillance is key for prevention and control.

If you would like to participate in our influenza surveillance efforts, please contact us at 619-515-6620.

For more information, please contact us at:

Community Epidemiology Division
Public Health Services
Health & Human Services Agency
(619) 515-6620
Epidiv@sdcounty.ca.gov