

**ARRESTEE DRUG ABUSE
MONITORING (ADAM) – 2002**

***REPORT ON DRUG USE AMONG THE
SAN DIEGO COUNTY ADULT
OFFENDER POPULATION***

OCTOBER 2003

Mara Bernd, Ph.D.

Cynthia Burke, Ph.D.



San Diego's Regional Planning Agency

401 B Street, Suite 800 • San Diego, CA 92101-4231 • (619) 595-5300

BOARD OF DIRECTORS



The 18 cities and county government are SANDAG serving as the forum for regional decision-making. The Association builds consensus, makes strategic plans, obtains and allocates resources, and provides information on a broad range of topics pertinent to the region's quality of life.

CHAIR: Hon. Ron Morrison

VICE CHAIR: Hon. Mickey Cafagna

EXECUTIVE DIRECTOR: Gary L. Gallegos

CITY OF CARLSBAD

Hon. Ramona Finnila, Mayor Pro Tem
(A) Hon. Bud Lewis, Mayor
(A) Hon. Matt Hall, Councilmember

CITY OF CHULA VISTA

Hon. Steve Padilla, Mayor
(A) Hon. Patty Davis, Councilmember
(A) Hon. Jerry Rindone, Deputy Mayor

CITY OF CORONADO

Hon. Phil Monroe, Mayor Pro Tem
(A) Hon. Frank Tierney, Councilmember

CITY OF DEL MAR

Hon. Crystal Crawford, Councilmember
(A) Hon. Richard Earnest, Deputy Mayor
(A) Hon. David Druker, Mayor

CITY OF EL CAJON

Hon. Mark Lewis, Mayor
(A) Hon. Gary Kendrick, Mayor Pro Tem

CITY OF ENCINITAS

Hon. Christy Guerin, Councilmember
(A) Hon. Maggie Houlihan, Deputy Mayor

CITY OF ESCONDIDO

Hon. Lori Holt Pfeiler, Mayor
(A) Hon. Ed Gallo, Councilmember

CITY OF IMPERIAL BEACH

Hon. Patricia McCoy, Councilmember
(A) Hon. Diane Rose, Mayor
(A) Hon. Mayda Winter, Councilmember

CITY OF LA MESA

Hon. Art Madrid, Mayor
(A) Hon. Barry Jantz, Councilmember
(A) Hon. David Allan, Councilmember

CITY OF LEMON GROVE

Hon. Mary Sessom, Mayor
(A) Hon. Jill Greer, Councilmember
(A) Hon. Jerry Jones, Councilmember

CITY OF NATIONAL CITY

Hon. Ron Morrison, Councilmember
(A) Frank Parra, Deputy Mayor

CITY OF OCEANSIDE

Hon. Jack Feller, Councilmember
(A) Hon. Terry Johnson, Mayor
(A) Hon. Rocky Chavez, Councilmember

CITY OF POWAY

Hon. Mickey Cafagna, Mayor
(A) Hon. Don Higginson, Councilmember
(A) Hon. Robert Emery, Councilmember

CITY OF SAN DIEGO

Hon. Dick Murphy, Mayor
Hon. Jim Madaffer, Councilmember
(A) Hon. Scott Peters, Councilmember

CITY OF SAN MARCOS

Hon. Corky Smith, Mayor
(A) Hon. Pia Harris-Ebert, Councilmember

CITY OF SANTEE

Hon. Hal Ryan, Vice Mayor
(A) Hon. Randy Voepel, Mayor
(A) Hon. Jack Dale, Councilmember

CITY OF SOLANA BEACH

Hon. Joe Kellejian, Deputy Mayor
(A) Hon. David Powell, Councilmember

CITY OF VISTA

Hon. Morris Vance, Mayor
(A) Hon. Judy Ritter, Councilmember
(A) Hon. Bob Campbell, Councilmember

COUNTY OF SAN DIEGO

Hon. Greg Cox, Chairman
(A) Hon. Ron Roberts, Supervisor

CALIFORNIA DEPARTMENT OF TRANSPORTATION

(Advisory Member)
Jeff Morales, Director
(A) Pedro Orso-Delgado, District 11 Director

METROPOLITAN TRANSIT DEVELOPMENT BOARD

(Advisory Member)
Leon Williams, Chairman
(A) Hon. Jerry Rindone, Vice Chairman
(A) Hon. Bob Emery, Board Member

NORTH SAN DIEGO COUNTY TRANSIT DEVELOPMENT BOARD

(Advisory Member)
Hon. Judy Ritter, Chair
(A) Vacant
(A) Hon. Jack Feller, Board Member

IMPERIAL COUNTY

(Advisory Member)
Hon. Victor Carrillo, Supervisor
(A) Hon. Larry Grogan, Councilmember, City of El Centro

U.S. DEPARTMENT OF DEFENSE

(Advisory Member)
CAPT Christopher Schanze, USN, CEC
Commander, Southwest Division
Naval Facilities Engineering Command
(A) CAPT Ken Butrym, USN, CEC

SAN DIEGO UNIFIED PORT DISTRICT

(Advisory Member)
Jess Van Deventer, Commissioner
(A) Michael Bixler, Commissioner
(A) Peter Q. Davis, Commissioner

SAN DIEGO COUNTY WATER AUTHORITY

(Advisory Member)
Hon. Bud Lewis, Director
(A) Bernie Rhinerson, Director

BAJA CALIFORNIA/MEXICO

(Advisory Member)
Hon. Rodolfo Figueroa Aramoni
Consul General of Mexico

ABSTRACT

TITLE: Arrestee Drug Abuse Monitoring (ADAM) – 2002: Report on Drug Use Among the San Diego County Adult Offender Population

AUTHOR: San Diego Association of Governments (SANDAG)

DATE: October 2003

SOURCE OF COPIES: San Diego Association of Governments
401 B Street, Suite 800
San Diego, CA 92101
(619) 595-5300

NUMBER OF PAGES: 118

ABSTRACT: The Arrestee Drug Abuse Monitoring (ADAM) program is supported by the National Institute of Justice. The purpose of the program is to identify drug use trends among the offender population in order to develop appropriate national and local policy strategies for the prevention, intervention, and treatment of drug abuse. SANDAG administers the program in San Diego County, which includes quarterly interviews with a sample of adults arrested and booked into local detention facilities. After a confidential interview about their drug use, arrestees are asked to provide a voluntary and anonymous urine sample for analysis.

The information presented in this report profiles persons arrested and booked into the Central Detention Facility, Vista Detention Facility, and Las Colinas Detention Facility during 2002.

ACKNOWLEDGEMENTS

Many individuals are responsible for the compilation of the data that constitute this report on drug use among arrestees. They warrant recognition and appreciation. We are grateful to Sheriff Bill Kolender and his staff for providing the opportunity and support to conduct these interviews in their detention facilities. The ADAM interviewers who work in the jails are to be commended and recognized by name. They include: Kim Arellanes, Barbara Gandy, Isaac Gonzalez, Julie Howard, Gayle LeVeque, Roni Melton, Angelica Mercado, Elva Rodriguez, Kristina Smrekar, and Laura Wheeler. We are also grateful to the Sheriff's reserve deputies who assist us each night: Charles Borra, Martin Breceda, Terry Griffith, Lori Hehir, John Hom, Liz Ledbetter, Bert Luna, Paul McGucken, Scott Robbins, Nihil Smith, John Stone, Jerry Tullos, and Sam Vella. Nearly last, but never least, are the SANDAG staff who manage the ADAM program, conduct interviews, and ensure the quality of the data collected: Donna Allnutt, Debbie Correia, Shannon Courtney, Tina Evangelou, Jeremy Hersch, Lisbeth Howard, Lori Jones, Sandy Keaton, Abigail Manluctao, and Lilita Mercado. Finally, we are appreciative of the arrestees who willingly share their experiences. Without them, there would be no ADAM.

TABLE OF CONTENTS

Executive Summary	1
Introduction	3
Project Overview	3
Research Questions and Answers	3
Chapter 1: Introduction	7
Project History and Background	9
Project Description	9
Report Organization	10
Chapter 2: Adult Arrestee Characteristics by Gender	13
Introduction	15
Demographics	15
Age	15
Ethnicity	16
Marital Status	17
Type and Location of Residence	18
Location of Arrest	20
Arrest Charge	21
Education	22
Employment Status	22
Health Insurance	23
Criminal History	23
Summary	24
Chapter 3: Adult Arrestee Drug Use	25
Introduction	27
Positive Drug Results	28
Comparisons Over Time	29
Comparison with Other ADAM Sites	35
Self-Reported Use	39
Age	43
Ethnicity	44
Arrest Charge	45
Area of Residence	47
Education	49
Employment Status	50
Health Insurance	52
Criminal History	53
Treatment Experience	55
Gender	55
Age	56

Ethnicity.....	56
Drug Use.....	57
Drug and Alcohol Dependence.....	59
Drug Market.....	60
Obtaining Drugs in the Past 30 Days.....	60
Cash Transactions.....	61
Non-Cash Transactions.....	65
Summary.....	66
Chapter 4: Comparison with Phoenix.....	67
Introduction.....	69
Age and Ethnicity.....	70
Arrest Charge.....	71
Other Characteristics.....	71
Positive Drug Results.....	72
Self-Reported Drug Use.....	73
Drug and Alcohol Dependence.....	75
Treatment Experience.....	76
Summary.....	77
Chapter 5: Methamphetamine Addendum.....	79
Introduction.....	81
Methamphetamine User Versus Non-User Characteristics.....	81
Age and Ethnicity.....	81
Arrest Charge.....	82
Location of Arrest.....	82
Criminal History.....	83
Urinalysis Results.....	83
Reasons for Using.....	84
Usage Characteristics.....	86
Route.....	86
Frequency.....	87
Side Effects.....	88
Treatment.....	88
Drug Market Dynamics.....	89
Terminology.....	89
Location of Purchase.....	89
Carrying a Weapon.....	91
Main Source.....	92
Purity and Price.....	92
Selling.....	93
Cooking.....	95
Summary.....	96
References.....	97
Instruments.....	101

LIST OF TABLES

Table 2.1	Characteristics by Gender, Adult Arrestees, San Diego Region, 2002.....	16
Table 2.2	Marital Status by Gender, Adult Arrestees, San Diego Region, 2002.....	17
Table 2.3	Type of Residence by Gender, Adult Arrestees, San Diego Region, 2002.....	18
Table 2.4	Location of Residence by Gender, Adult Arrestees, San Diego Region, 2002	19
Table 2.5	Location of Arrest by Gender, Adult Arrestees, San Diego Region, 2002.....	20
Table 2.6	Highest Charge at Arrest by Gender, Adult Arrestees, San Diego Region, 2002	21
Table 2.7	Education by Gender, Adult Arrestees, San Diego Region, 2002	22
Table 2.8	Employment Status by Gender, Adult Arrestees, San Diego Region, 2002	22
Table 2.9	Health Insurance by Gender, Adult Arrestees, San Diego Region, 2002.....	23
Table 2.10	Criminal History by Gender, Adult Arrestees, San Diego Region, 2002	23
Table 3.1	ADAM Sites Positive Drug Testing Rates, Weighted, Adult Male Arrestees, 2002	36
Table 3.2	ADAM Sites Positive Drug Testing Rates, Weighted, Adult Female Arrestees, 2002	37
Table 3.3	Self-Reported Drug Use Compared to Positive Drug Result, Adult Male Arrestees, San Diego Region, 2002.....	39
Table 3.4	Self-Reported Drug Use Compared to Positive Drug Result, Adult Female Arrestees, San Diego Region, 2002.....	40
Table 3.5	Self-Reported Other Drug Use by Year and Gender, Adult Arrestees, San Diego Region, 2000 to 2002.....	42
Table 3.6	Positive Drug Result by Age, Adult Male Arrestees, San Diego Region, 2002.....	43
Table 3.7	Positive Drug Result by Age, Adult Female Arrestees, San Diego Region, 2002	44
Table 3.8	Positive Drug Result by Ethnicity, Adult Male Arrestees, San Diego Region, 2002	44
Table 3.9	Positive Drug Result by Ethnicity, Adult Female Arrestees, San Diego Region, 2002	45
Table 3.10	Positive Drug Result by Highest Arrest Charge, Adult Male Arrestees, San Diego Region, 2002	45
Table 3.11	Positive Drug Result by Highest Arrest Charge, Adult Female Arrestees, San Diego Region, 2002	46
Table 3.12	Positive Drug Result by Area of Residence, Adult Male Arrestees, San Diego Region, 2002.....	47

Table 3.13	Positive Drug Result by Area of Residence, Adult Female Arrestees, San Diego Region, 2002.....	48
Table 3.14	Positive Drug Result by Education, Adult Male Arrestees, San Diego Region, 2002	49
Table 3.15	Positive Drug Result by Education, Adult Female Arrestees, San Diego Region, 2002	49
Table 3.16	Positive Drug Result by Employment Status, Adult Male Arrestees, San Diego Region, 2002.....	50
Table 3.17	Positive Drug Result by Employment Status, Adult Female Arrestees, San Diego Region, 2002	51
Table 3.18	Positive Drug Result by Health Insurance Status, Adult Male Arrestees, San Diego Region, 2002	52
Table 3.19	Positive Drug Result by Health Insurance Status, Adult Female Arrestees, San Diego Region, 2002	52
Table 3.20	Positive Drug Result by Arrest Status, Adult Male Arrestees, San Diego Region, 2002.....	53
Table 3.21	Positive Drug Result by Arrest Status, Adult Female Arrestees, San Diego Region, 2002.....	53
Table 3.22	Positive Drug Result by Ever Served Time, Adult Male Arrestees, San Diego Region, 2002.....	54
Table 3.23	Positive Drug Result by Ever Served Time, Adult Female Arrestees, San Diego Region, 2002.....	54
Table 3.24	Treatment Experience by Age, Adult Arrestees, San Diego Region, 2002.....	56
Table 3.25	Treatment Experience by Ethnicity, Adult Arrestees, San Diego Region, 2002.....	56
Table 3.26	Positive Drug Result by Ever Had Inpatient Treatment, Adult Arrestees, San Diego Region, 2002	57
Table 3.27	Positive Drug Result by Ever Had Outpatient Treatment, Adult Arrestees, San Diego Region, 2002	57
Table 3.28	Positive Drug Result by Ever Had Mental Health Treatment, Adult Arrestees, San Diego Region, 2002	58
Table 3.29	Heavy Drug and Alcohol Use by Gender, Weighted, Adult Arrestees, San Diego Region, 2002	59
Table 3.30	Obtaining Drugs in the Past 30 Days, Adult Arrestees, San Diego Region, 2002	60
Table 3.31	Source of Buying Drugs During Last Drug Buy, Adult Arrestees, San Diego Region, 2002.....	61
Table 3.32	How Contacted the Dealer During Last Drug Buy, Adult Arrestees, San Diego Region, 2002.....	62
Table 3.33	Where Obtained Drugs During Last Drug Buy, Adult Arrestees, San Diego Region, 2002.....	62
Table 3.34	Times Bought Drug and Number of People Bought From, Adult Arrestees, San Diego Region, 2002	63
Table 3.35	Why it was Hard to Buy Drug, Adult Arrestees, San Diego Region, 2002	64

Table 3.36	How Contacted the Dealer During the Last Time Obtained Drug Without Cash, Adult Arrestees, San Diego Region, 2002	65
Table 3.37	Number of Times Obtained Drug Without Paying Cash, Adult Arrestees, San Diego Region, 2002	66
Table 4.1	Ethnicity by Site, San Diego and Phoenix Cities, 2000.....	69
Table 4.2	Age and Ethnicity by Site, Adult Male Arrestees, San Diego and Phoenix Regions, 2002	70
Table 4.3	Heavy Drug and Alcohol Use by Site, Weighted, Adult Male Arrestees, San Diego and Phoenix Regions, 2002	75
Table 5.1	Ethnicity of Methamphetamine Users Versus Non-Users, Adult Arrestees, San Diego Region, 2002	81
Table 5.2	Highest Charge at Arrest of Methamphetamine Users Versus Non-Users, Adult Arrestees, San Diego Region, 2002.....	82
Table 5.3	Arrest Location of Methamphetamine Users Versus Non-Users, Adult Arrestees, San Diego Region, 2002.....	82
Table 5.4	Criminal History of Methamphetamine Users Versus Non-Users, Adult Arrestees, San Diego Region, 2002.....	83
Table 5.5	Positive Urinalysis of Methamphetamine Users Versus Non-Users, Adult Arrestees, San Diego Region, 2002.....	83
Table 5.6	Reasons for First Trying Methamphetamine, Adult Methamphetamine Users, San Diego Region, 2002	84
Table 5.7	Reasons for Still Using Methamphetamine, Adult Methamphetamine Users, San Diego Region, 2002	85
Table 5.8	Frequency of Methamphetamine Use, Adult Methamphetamine Users, San Diego Region, 2002	87
Table 5.9	Consequences of Methamphetamine Use, Adult Methamphetamine Users, San Diego Region, 2002	88
Table 5.10	Participation in Illegal Drug Activities in Past 30 Days, Adult Methamphetamine Users, San Diego Region, 2002.....	93
Table 5.11	Characteristics of Methamphetamine Users by Participation in Drug-Related Activities, Adult Methamphetamine Users, San Diego Region, 2002	94
Table 5.12	Demand for and Availability of Methamphetamine Compared to Previous Year, Adult Methamphetamine Users, San Diego Region, 2002.....	95

LIST OF FIGURES

Figure 3.1	Positive Urinalysis by Gender and Drug, Adult Arrestees, San Diego Region, 2002	28
Figure 3.2	Positive Urinalysis for Any Illicit Drug by Gender, Adult Arrestees, San Diego Region, 1998 to 2002.....	29
Figure 3.3	Positive Urinalysis for Marijuana by Gender, Adult Arrestees, San Diego Region, 1998 to 2002.....	30
Figure 3.4	Positive Urinalysis for Cocaine by Gender, Adult Arrestees, San Diego Region, 1998 to 2002.....	31
Figure 3.5	Positive Urinalysis for Heroin by Gender, Adult Arrestees, San Diego Region, 1998 to 2002.....	32
Figure 3.6	Positive Urinalysis for Methamphetamine by Gender, Adult Arrestees, San Diego Region, 1998 to 2002.....	33
Figure 3.7	Positive Urinalysis for Multiple Drugs by Gender, Adult Arrestees, San Diego Region, 1998 to 2002.....	34
Figure 3.8	Percent Positive for Methamphetamine by ADAM Site, Weighted, Adult Male Arrestees, 2002.....	38
Figure 3.9	Self-Reported Other Drug Use by Year and Gender, Adult Arrestees, 2000 to 2002	41
Figure 3.10	Treatment Experience by Gender, Adult Arrestees, San Diego Region, 2002.....	55
Figure 4.1	Highest Charge at Arrest by Site, Adult Male Arrestees, San Diego and Phoenix Regions, 2002.....	71
Figure 4.2	Positive Drug Results by Site, Adult Male Arrestees, San Diego and Phoenix Regions, 2002	72
Figure 4.3	Ever Tried a Substance by Site, Adult Male Arrestees, San Diego and Phoenix Regions, 2002	73
Figure 4.4	Other Drug Used Most Often by Site, Adult Male Arrestees, San Diego and Phoenix Regions, 2002.....	74
Figure 4.5	Treatment Experience by Site, Adult Male Arrestees, San Diego and Phoenix Regions, 2002	76
Figure 5.1	Route of Administration, Adult Methamphetamine Users, San Diego Region, 1999 to 2002.....	86
Figure 5.2	Areas in San Diego County Where Methamphetamine is Obtained, Adult Methamphetamine Users, San Diego Region, 2002.....	90
Figure 5.3	Carrying a Weapon While Obtaining Methamphetamine in Past 30 Days, Adult Methamphetamine Users, San Diego Region, 2002	91

Figure 5.4 Price and Purity of Methamphetamine Compared to Previous Year, Adult
Methamphetamine Users, San Diego Region, 1999 to 2002 92

EXECUTIVE SUMMARY

EXECUTIVE SUMMARY

INTRODUCTION

The Arrestee Drug Abuse Monitoring (ADAM) program provides an opportunity to assess the drug use experience of a relatively high-risk population sub-group: adult arrestees. The program, funded by the National Institute of Justice (NIJ), began in 1987 and is conducted in a growing number of cities each year, with 36 sites interviewing adults in 2002. The Criminal Justice Research Division of the San Diego Association of Governments (SANDAG) has been the site administrator for the San Diego site since the program's inception. The current report describes the results from the 1,094 interviews conducted with adult males and females in 2002, including data from the methamphetamine addendum. This is the first time in a local report that San Diego has been compared to another ADAM site, Phoenix. The addition of this information allows for comparisons to be made between two cities that are similar in size, as well as geographically and demographically.

PROJECT OVERVIEW

With the cooperation of the San Diego County Sheriff's Department, ADAM staff members conduct interviews with adults arrested and booked into the local detention facilities (Central Detention Facility, Vista Detention Facility, and Las Colinas Detention Facility) each quarter. The interviews are confidential, anonymous, and voluntary. To have an objective measure of drug use, a urine specimen is requested from the arrestees at the end of the interview process. Participants are offered a small incentive (a candy bar and a sack lunch for the men, five dollars for the women) for their cooperation. An additional interview on methamphetamine is conducted with arrestees who report having used this substance in the past month.

RESEARCH QUESTIONS AND ANSWERS

The information gathered from this group of individuals is valuable and can provide insight on drug trends in the community among the adult population.

Is the ADAM Sample Representative of the Adult Arrestee Population and of the Adult Population as a Whole?

The characteristics of the adults who participated in ADAM were representative of the overall adult arrestee population for 2002 in terms of age, ethnicity, and offense charge. Compared to the San Diego County adult population as a whole, ADAM participants were younger, more likely to be an ethnic minority, and more likely to come from the Central area of the County.

Are Men More Likely to Use Drugs than Women?

In 2002, men were more likely to use marijuana (37%) than women (33%), but women were more likely to use harder drugs, such as cocaine (12% men and 21% women) and methamphetamine (34% men and 37% women). This difference gave women a higher overall rate for testing positive for any illicit drug (72%) than men (66%). Traditionally, men had tested positive for any drug at a higher rate than women, a trend which ended in 2001 when women began to surpass men.

Have Drug Use Rates Changed Over the Past Few Years?

In general, drug use among men has remained relatively stable in the past five years, while drug use among women has increased. The rates of testing positive for marijuana for both genders has been stable, with the exception of a slight increase for women between 2001 (28%) and 2002 (33%). Cocaine use among men has been dropping steadily since 1998 (from 19% five years ago to 12% in 2002), while cocaine use among women has fluctuated during the same time period. Positive tests for heroin have remained relatively stable, with men and women showing similar patterns of use. Methamphetamine use among women has been stable at just above one-third testing positive each year in the past five years, while methamphetamine use among men has increased from 1999 (27%) to 2002 (34%), reaching the same proportion in 2002 as in 1998 (34%).

Which Adult Characteristics are Associated With Drug Use?

Younger male arrestees (age 25 and under) were more likely than the older arrestees to test positive for any illicit drug, mostly due to the high rates of marijuana use among this sub-group. The situation was reversed for female arrestees, in which younger arrestees were *less* likely to test positive for any illicit drug than older arrestees. White and Black arrestees of both genders were more likely to test positive than arrestees of other ethnicities. Those arrested on a drug or alcohol offense or property offense were more likely to test positive than those arrested for a violent or other type of offense. Arrestees who were currently working, who had health insurance, and who did not have a criminal history were also less likely to test positive than others. Location of residence and arrest and high school graduation status did not influence an adult's propensity to test positive for drugs.

What Differences in Drug Use are Apparent between San Diego and Phoenix?

San Diego arrestees were less likely to test positive for cocaine and marijuana than Phoenix arrestees, which contributed to San Diego's lower rate of testing positive for any illicit drug (66%) than Phoenix (73%). However, San Diego arrestees were more likely to be charged with a drug or alcohol offense and report receiving drug or alcohol treatment in the past. These differences may be attributed to better enforcement of drug law violations in San Diego County, as well as more availability or more options for treatment in San Diego, despite both California and Arizona recently enacting laws that require some drug offenders to receive treatment rather than be incarcerated.

What are the Characteristics of Meth Users Compared to Non-Users of Methamphetamine?

Meth users were more likely than non-users to be White or Hispanic, come from the East Suburban area of San Diego County, be charged with a drug or alcohol offense, and have a criminal history. There were very few Black users of meth (8% of the total number reporting meth use), and meth users were less likely to be arrested on a violent charge (16%) than non-users (26%).

CHAPTER 1

INTRODUCTION

CHAPTER 1

INTRODUCTION

PROJECT HISTORY AND BACKGROUND

Since 1987, the National Institute of Justice (NIJ) has provided funding support for the Arrestee Drug Abuse Monitoring (ADAM) program. Currently, there are 36 ADAM sites in the country. The ADAM Program provides an opportunity to assess the drug use experiences of a relatively high-risk population sub-group: adult arrestees.

SANDAG has been the site administrator for ADAM in San Diego since the project's inception. With the cooperation of the San Diego County Sheriff's Department, SANDAG staff members have conducted interviews with men at the downtown Central Detention Facility and women at the Las Colinas Detention Facility. As of 1999, interviews were initiated at Vista Detention Facility to provide a more comprehensive picture of drug use across the region.

The social, health, and financial costs and consequences of drug abuse are important concerns for the San Diego Region. To target resources appropriately with respect to prevention, intervention, enforcement, treatment, and interdiction, the nature and scope of drug use must be carefully monitored. There are many benefits of the ADAM information for practitioners and policymakers. For example, examination of drug use trends over time can identify access and availability of types of drugs, as well as changes in the population sub-groups who are using different types of drugs (e.g., ethnic groups, age categories, gender, etc.). Monitoring the ADAM results also provides a means to evaluate the impact of new drug prevention and control strategies.

The ADAM process can be used as a research platform to learn about other issues affecting the arrestee population sub-group. For example, San Diego administered a domestic violence addendum with female arrestees for one year, helping to determine the prevalence of domestic violence among arrestees (Pennell & Burke, 2003). Additionally, with NIJ funding, SANDAG developed an addendum to the ADAM interview to address drug use and market dynamics related to methamphetamine. An interview about access and use of firearms was also initiated in prior years and administered at eleven ADAM sites. The results of that addendum showed strong correlations between gun possession and gang membership, as well as an association between gang membership and drug sales. Another addendum in which San Diego arrestees participated focused on heroin and cocaine users and their procurement and use patterns.

PROJECT DESCRIPTION

Each quarter, ADAM staff members conduct interviews with individuals arrested and booked into local detention facilities. Interviews are conducted within 48 hours of arrest and are voluntary, confidential, and anonymous. After responding to a series of questions about their patterns of drug use, arrest and incarceration history, and access to drug treatment, arrestees are asked to provide a voluntary urine specimen for laboratory analysis. Compliance is high for both interview

participation and the provision of a urine sample. Interviewers are skilled in developing rapport with arrestees and assuring them that the information and drug test results will not be shared with others. Arrestees receive a small incentive (e.g., lunch, cash, etc.) for their participation.

Probability sampling, rather than the previously used method of convenience sampling, was put into practice starting in the fourth quarter of 1999. Probability sampling allows every booked arrestee the same chance of being selected for an interview, regardless of when he or she was arrested or booked (as long as it is within the last 48 hours). When using convenience sampling, any inmate who was recently arrested who was available in the booking area was asked to be interviewed. Therefore, convenience sampling gave arrestees who were booked at a certain time of day (i.e., the time that the interviewers were in the jail) a better chance of getting interviewed, thus possibly skewing the data.

In the first quarter of 2000, a revised interviewing instrument was implemented. Because of the differences between the old instrument and the new, many variables cannot be compared across time.

REPORT ORGANIZATION

This report begins with a presentation of drug use trends over time, by drug type, as measured by urinalysis tests. Characteristics of year 2002 arrestees are then presented in greater detail regarding age, ethnicity, arrest charge, educational attainment, employment status, treatment experience, criminal history, drug or alcohol dependence, self-reported drug use, and recent drug market experience. Comparisons between San Diego arrestees and arrestees from a similar region, Phoenix, are made with the same variables.

Some of the data are weighted, while the majority are not. Weighting data means that the arrestees who were selected through sampling are used to determine how many people those arrestees represent in the total population of persons arrested during the data collection period. Each individual's probability of selection determines the sampling weight. For example, if a person had a 0.10 probability of being selected for an interview, then he or she would represent him/herself plus nine others who were not included in the sample. Each probability is determined by a selection of variables, and a description of the specific method is beyond the scope of this report.

Additionally, due to the historically high use of methamphetamine in San Diego County and the nationwide upsurge in its use, SANDAG received funding from NIJ to develop a methamphetamine addendum to the ADAM interview. The addendum was initially administered in five western cities from October 1996 through September 1997. The report on the five sites, entitled "Meth Matters: Methamphetamine Users in Five Western Cities," is available from NIJ. By obtaining local funding, San Diego has continued to administer the meth addendum, and the current report includes a summary of the data collected during 2002. This supplement to the ADAM interview is completed by arrestees who admit to using methamphetamine (also called "meth") within 30 days of the interview. It includes questions about use patterns, drug market dynamics, and aspects of manufacturing meth.

Traditionally, juvenile data have been reported along with the adults. However, juveniles are described in a separate report for 2002, entitled "Report on Drug Use Among the San Diego County Juvenile Arrestee Population—2002." This report is available to download from the SANDAG Web site (www.sandag.org/cj) or bound copies can be ordered by contacting SANDAG. In mid-year 2002, NIJ determined that funding support to continue juvenile data collection was no longer available. Locally, a number of justice administrators agreed that the juvenile information was extremely important to the region. Consequently, the California Border Alliance Group (CBAG) agreed to provide the funding support through High Intensity Drug Trafficking Area (HIDTA) funds, which is allowing the juvenile data collection to continue in San Diego.

CHAPTER 2
ADULT ARRESTEE CHARACTERISTICS
BY GENDER

CHAPTER 2

ADULT ARRESTEE CHARACTERISTICS BY GENDER

INTRODUCTION

This chapter presents comparisons between men and women who participated in ADAM. In 2002, 1,328 adults were asked to do the ADAM interview, 67 percent of whom were men. Of those who were approached for an interview, 1,142 agreed to participate (783 men and 359 women), an interview response rate of 86 percent (88% for men and 83% for women). Of those who were interviewed, 1,094 provided an adequate urine sample (749 men and 345 women), reflecting a urine specimen provision rate of 96 percent (96% for both genders) (not shown). Because most of the analyses relate to urinalysis results, data presented are for just the 1,094 adults who provided urine specimens. Men were interviewed an average of 8.0 hours after the time of their arrest and women were interviewed within an average of 7.6 hours after the time of their arrest (not shown).

DEMOGRAPHICS

Age

About one-third of the arrestees (36% of males and 32% of females) were 25 years old or younger and about half (50% of males and 52% of females) were 31 or older (Table 2.1). There were no statistically significant differences in age between the genders (mean 32.3 for men and 31.9 for women) (not shown).

Compared to the ages of all people arrested and booked into San Diego detention facilities during the months in which ADAM was conducted, ADAM arrestees closely reflected the proportions in each age category, with slightly fewer adults who were 25 and under (30% of all adult arrestees) and slightly more adults who were 31 and over (55%) compared to the ADAM adults (34% and 51%, respectively) (Table 2.1). However, compared to all adult residents in the San Diego region, both ADAM arrestees and the total adult arrestee population in San Diego County were younger overall, with only 17 percent of the region age 25 and under and almost three-fourths (72%) of the adults age 31 and over.

Ethnicity

Forty percent (40%) of men and 48 percent of women interviewed for ADAM were White¹ (Table 2.1). A higher proportion of men were Hispanic (37%) than women (21%), while women were more likely to be Black (25%) than men (18%). These differences in ethnicity between genders were statistically significant.

The ethnic proportions for the ADAM sample almost perfectly matched all San Diego bookings for the months in which ADAM was conducted in 2002 (Table 2.1). However, Hispanics and Blacks were overrepresented in the arrestee population compared to their proportions in the region. Specifically, about one-quarter (24%) of the San Diego County adult population was Hispanic, but one-third (33%) of the arrestees in San Diego were Hispanic. Similarly, five percent of the adult population was Black, but over three times as many (18%) of the arrestees were Black. White arrestees and people of other ethnicities (e.g., Asian, American Indian, Pacific Islander) were underrepresented in the arrestee and ADAM populations.

Table 2.1
CHARACTERISTICS BY GENDER
Adult Arrestees, San Diego Region, 2002

	Men	Women	All ADAM Adults	San Diego Bookings	San Diego Region
Age					
25 and under	36%	32%	34%	30%	17%
26-30	14%	16%	15%	15%	11%
31 and over	50%	52%	51%	55%	72%
TOTAL	749	345	1,094	37,194	2,172,403
Ethnicity					
White	40%	48%	43%	44%	58%
Hispanic	37%	21%	32%	33%	24%
Black	18%	25%	20%	18%	5%
Other	5%	6%	5%	5%	13%
TOTAL	749	345	1,094	37,195	2,172,403

NOTE: Cases with missing information are not included.

SOURCES: San Diego County Sheriff's Department; U.S. Census; SANDAG

¹ Note: The ethnic groups in this report are referred to as Black, Hispanic, White, and Other in the text. While many people may prefer to identify themselves as African-American rather than Black, Latino rather than Hispanic, or as a member of a particular ethnic group rather than White, SANDAG uses terminology consistent with the 1990 Census questionnaire.

Marital Status

Although male and female arrestees were about equally likely to be married at the time of the interview (24% males and 23% females), a higher proportion of men had never been married (58%) than women (51%) (Table 2.2). Differences in marital status between genders were statistically significant. The sub-population of ADAM arrestees was much more likely to have never been married (56%) than the San Diego County adult population as whole in 2000 (30%) (U.S. Census Bureau, 2000) (not shown).

Table 2.2
MARITAL STATUS BY GENDER
Adult Arrestees, San Diego Region, 2002

	Men	Women	All Adults
Single, never married	58%	51%	56%
Married	24%	23%	24%
Divorced	12%	15%	13%
Legally separated	5%	9%	7%
Widowed	1%	2%	1%
TOTAL	747	345	1,092

NOTE: Cases with missing information are not included. Percentages may not equal 100 due to rounding.

Type and Location of Residence

Arrestees were asked where they were living for the majority of the time in the past 30 days. The majority of arrestees (77%) reported living in a house, mobile home, or apartment (Table 2.3). Slightly more men (12%) reported having no fixed residence or being homeless than women (8%), while slightly more women than men reported living in a residential hotel, rooming house, dormitory, group home, student housing, or military base (10% versus 6%, respectively).

Table 2.3
TYPE OF RESIDENCE BY GENDER
Adult Arrestees, San Diego Region, 2002

	Men	Women	All Adults
House, mobile home, or apartment	77%	78%	77%
No fixed residence or homeless	12%	8%	11%
Residential hotel, rooming house, dormitory, group home, student housing, or military base	6%	10%	8%
Jail, prison, or correctional boot camp	2%	1%	2%
Hospital, treatment facility, or extended care facility	1%	1%	1%
Other	1%	1%	1%
Shelter	<1%	1%	<1%
TOTAL	745	345	1,090

NOTE: Cases with missing information are not included. Percentages may not equal 100 due to rounding.

The area of the County where the highest proportion of both genders lived was the Central² major statistical area (MSA), with 38 percent of the men and 46 percent of the women residing in this area (Table 2.4). A higher proportion of men lived in the North County East area (13%), which includes Escondido, San Marcos, and Vista, and in the North County West area (9%), which includes Oceanside and Carlsbad, than women (2% and 1%, respectively). The differences in location of residence were statistically significant and are attributed, at least in part, to female arrestees not being interviewed in 2002 at the Vista Detention Facility where North County arrestees are booked. Excluding men who were interviewed at Vista, similar proportions of men and women lived in the North County areas (not shown).

Compared to the adult population in San Diego County as a whole, adults living in the Central region were overrepresented in the ADAM sample (41% ADAM versus 22% region) (U.S. Census, 2000) (Table 2.4). Accordingly, adults living in the North City region were underrepresented, comprising nine percent of the ADAM sample but one-quarter (24%) of the entire adult population.

Table 2.4
LOCATION OF RESIDENCE BY GENDER
Adult Arrestees, San Diego Region, 2002

	Men	Women	All ADAM Adults	San Diego Region
Central	38%	46%	41%	22%
East Suburban	14%	20%	16%	16%
North County East	13%	2%	9%	13%
South Suburban	10%	14%	11%	11%
North County West	9%	1%	6%	13%
North City	8%	9%	9%	24%
Out of County	6%	3%	5%	na
Homeless	2%	3%	2%	na
East County	<1%	2%	1%	1%
TOTAL	532	228	760	2,172,403

NOTE: Cases with missing information are not included.

SOURCES: SANDAG; U.S. Census

² MSAs of San Diego County are divided as follows: the Central region includes Downtown, North Park, National City, Ocean Beach, and Southeastern San Diego, as well as neighborhoods immediately adjacent to these areas. North City includes such areas such as Clairemont, Pacific Beach, Mira Mesa, and Poway. South Suburban is comprised of Chula Vista, Imperial Beach, San Ysidro, and Sweetwater. East Suburban includes Alpine, El Cajon, Jamul, Lakeside, La Mesa, Lemon Grove, Ramona, Santee, and Spring Valley. North County West is comprised of Carlsbad, Encinitas, and Oceanside. North County East includes Escondido, Fallbrook, San Marcos, Valley Center, and Vista. East County covers Borrego Springs, Julian, Laguna, Palomar, and Pine Valley.

LOCATION OF ARREST

Not surprisingly, the location of arrest and location of residence were highly correlated ($r=0.7$), which means that people tended to get arrested in the same general area in which they lived. Also, arrest location differences between men and women were statistically significant, with larger proportions of women arrested in the Central (41%), East Suburban (23%), and South Suburban (22%) areas (Table 2.5). Men were primarily arrested in the Central area (35%) and were almost equally distributed between East Suburban (15%), North County West (15%), South Suburban (13%), and North County East (12%). Again, the differences between genders in the North County areas are attributed, at least in part, to not having interviewed female arrestees in 2002 at the Vista Detention Facility. Excluding Vista, similar proportions of men and women were arrested in the two North County areas (not shown).

Table 2.5
LOCATION OF ARREST BY GENDER
Adult Arrestees, San Diego Region, 2002

	Men	Women	All Adults
Central	35%	41%	36%
East Suburban	15%	23%	17%
North County West	15%	1%	11%
South Suburban	13%	22%	16%
North County East	12%	1%	9%
North City	8%	10%	9%
East County	1%	1%	1%
Out of County	1%	<1%	1%
TOTAL	520	207	727

NOTE: Cases with missing information are not included. Percentages may not equal 100 due to rounding.

ARREST CHARGE

Both men (34%) and women (38%) had a drug or alcohol offense (such as drug possession, driving under the influence, drug sales, and being under the influence of a controlled substance) as their most frequent highest charge (Table 2.6). One-quarter (25%) of men and 18 percent of women were charged with a violent offense (including spousal abuse, aggravated assault, simple assault, and threats) as their highest charge. More men (26%) than women (16%) were arrested on “other” charges, which include probation or parole violations, public peace disturbances, failures to appear in court, and resisting arrest. Almost twice the proportion of women (28%) were arrested on property offenses (including burglary, theft, and stolen vehicle) than men (15%). These differences were statistically significant.

Compared to all adult arrests during the months in which ADAM was conducted in 2002, ADAM adults were just about as likely to be charged with a drug or alcohol offense (36%) than all adults arrested (39%) (Table 2.6). The percentages of ADAM adults arrested for violent offense (23%) and property offenses (19%) were slightly higher than those for all adults arrested during that time period (19% and 13%, respectively). ADAM adults were slightly less likely to be arrested on “other” charges (23%) than all adult arrestees in San Diego (29%). In all, these differences were so slight that it can be said that the ADAM sample was representative of the San Diego adult arrestee population as a whole in terms of highest charge at arrest.

Table 2.6
HIGHEST CHARGE AT ARREST BY GENDER
Adult Arrestees, San Diego Region, 2002

	Men	Women	All ADAM Adults	San Diego Bookings
Drug/Alcohol	34%	38%	36%	39%
Violent	25%	18%	23%	19%
Other	26%	16%	23%	29%
Property	15%	28%	19%	13%
TOTAL	748	344	1,092	37,173

NOTE: Cases with missing information are not included. Percentages may not equal 100 due to rounding.

SOURCES: San Diego County Sheriff's Department; SANDAG

Property offenses were significantly more likely to be charged to younger arrestees (age 25 and under) (43%) than older arrestees (19% age 26 to 30 and 38% age 31 and over). Drug or alcohol offenses were most likely to be charged to arrestees age 31 and over (52%) than younger arrestees (15% age 26 to 30 and 33% age 25 and under). Violent offenses were significantly more likely to be charged to Hispanic arrestees (41%) than arrestees of other ethnic groups (range 6% other ethnicities to 35% White). There was no statistically significant difference in highest charge related to the location of residence (not shown).

EDUCATION

Seventy percent (70%) of men and 74 percent of women reported receiving at least a high school degree (Table 2.7), which is a smaller proportion than that for the entire population of San Diego County adults in 2000 (83%) (U.S. Census Bureau, 2000) (not shown). Education levels were slightly higher for ADAM women, who reported going to some college or receiving a two-year associate degree (28%) more frequently than men (20%), but the differences were not statistically significant.

Table 2.7
EDUCATION BY GENDER
Adult Arrestees, San Diego Region, 2002

	Men	Women	All Adults
No degree	30%	26%	29%
High School or GED	40%	34%	38%
Vocational or trade school	5%	5%	5%
Some college or two-year associate degree	20%	28%	23%
Four-year college degree or higher	5%	7%	5%
TOTAL	748	345	1,093

NOTE: Cases with missing information are not included.

EMPLOYMENT STATUS

Men were significantly more likely to have a job (61%), either full-time or part-time, at the time of the interview than women (35%) (Table 2.8). Overall, ADAM adults were less likely to be working (53%) compared to the general adult population in San Diego County in 2000 (65%) (U.S. Census Bureau, 2000). Female arrestees were even less likely to be holding down a job (35%) than their counterparts in the general San Diego female population (57%) (not shown).

Table 2.8
EMPLOYMENT STATUS BY GENDER
Adult Arrestees, San Diego Region, 2002

	Men	Women	All Adults
Working full- or part-time	61%	35%	53%
Not working	39%	65%	47%
TOTAL	748	344	1,092

NOTE: Cases with missing information are not included.

HEALTH INSURANCE

ADAM women were significantly more likely to report having health insurance (48%) than men (35%) (Table 2.9). However, this sub-group of the population was much less likely to have health insurance (40%) than the entire U.S. population (85%), as reported in U.S. Census Bureau estimates for 2001. Of those who had insurance, women were most likely to have state government-funded insurance (including welfare or Medicaid) (54%), while men were most likely to have insurance through their employer (48%) (not shown).

Table 2.9
HEALTH INSURANCE BY GENDER
Adult Arrestees, San Diego Region, 2002

	Men	Women	All Adults
Has health insurance	35%	48%	40%
Does not have health insurance	65%	52%	60%
TOTAL	742	344	1,086

NOTE: Cases with missing information are not included.

CRIMINAL HISTORY

Men were significantly more likely (81%) than women (68%) to report having been arrested as an adult prior to the current arrest (Table 2.10). Similarly, men (77%) were significantly more likely than women (61%) to report they had been held in jail for at least 24 hours or served time in a jail, prison, juvenile detention facility, or boot camp.

Table 2.10
CRIMINAL HISTORY BY GENDER
Adult Arrestees, San Diego Region, 2002

	Men	Women	All Adults
Arrested (not including juvenile arrests)	81%	68%	77%
Served at least 24 hours in jail (including juvenile time)	77%	61%	72%
TOTAL	748-749	344-345	1,092-1,094

NOTE: Cases with missing information are not included.

SUMMARY

As part of the ADAM (Arrestee Drug Abuse Monitoring) program, 749 men and 345 women who were arrested and booked into San Diego detention facilities in 2002 were interviewed about their drug use history and provided urine samples. Demographically, these arrestees were representative of all adults booked into San Diego detention facilities. The largest proportion was age 31 and over, 43 percent were White, and 41 percent lived in the Central region of the County. Around half had never been married and over three-quarters had resided in a house, mobile home, or apartment during the month prior to the interview. Almost one-third did not graduate from high school but 61 percent of the men and 35 percent of the women were currently working either full- or part-time. Over one-third were arrested for a drug or alcohol offense and the majority had been arrested and booked at least one other time as an adult or had served time in their lifetime. Differences between the male and female samples included ethnicity, marital status, arrest charge, job status, having health insurance, and criminal history.

CHAPTER 3
ADULT ARRESTEE DRUG USE

CHAPTER 3

ADULT ARRESTEE DRUG USE

INTRODUCTION

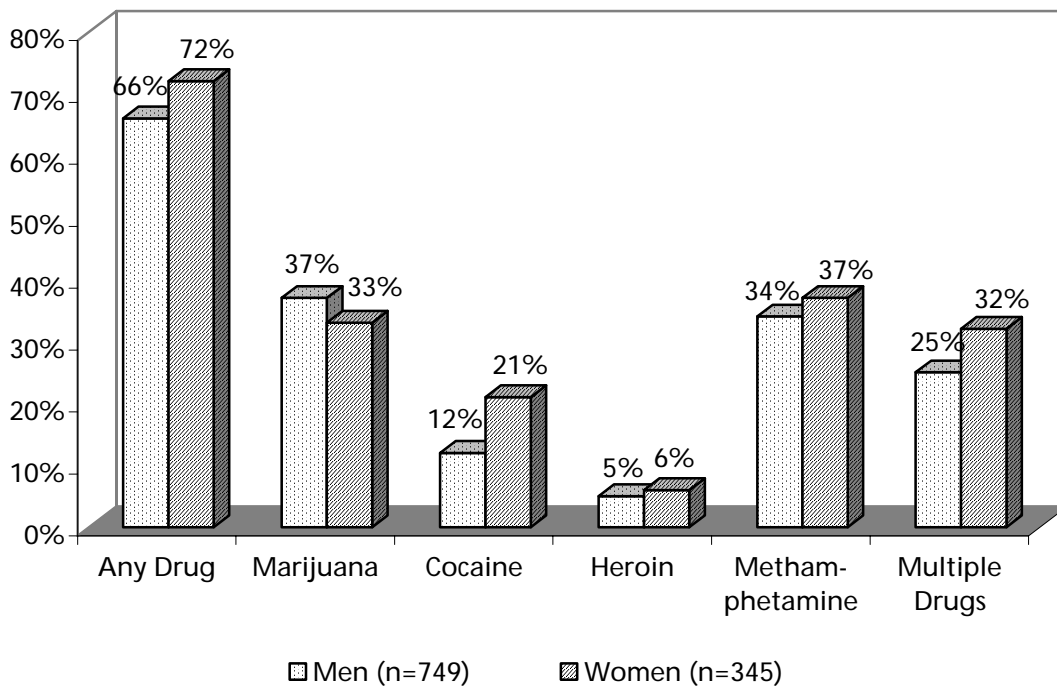
This chapter describes drug use, both self-reported and as shown in results from urinalysis testing, for all adults who were interviewed and provided urine samples in 2002. Comparisons are also made over time and according to gender, age, ethnicity, highest charge, and other arrestee characteristics. Responses about treatment and drug market issues are included as well.

POSITIVE DRUG RESULTS

In 2002, women (72%) were more likely than men (66%) to test positive for any illicit drug¹ (Figure 3.1). This difference is mainly attributed to the higher rates at which women tested positive for cocaine (21%) and methamphetamine (37%) compared to men (12% and 34%, respectively). Men were more likely to test positive for marijuana (37%) than women (33%). The two genders tested positive for heroin at about the same rate (5% men and 6% women).

Of those who had used drugs in the past year, women (16%) and men (17%) were about equally likely to also report injecting drugs during that time (not shown).

Figure 3.1
POSITIVE URINALYSIS BY GENDER AND DRUG
Adult Arrestees, San Diego Region, 2002



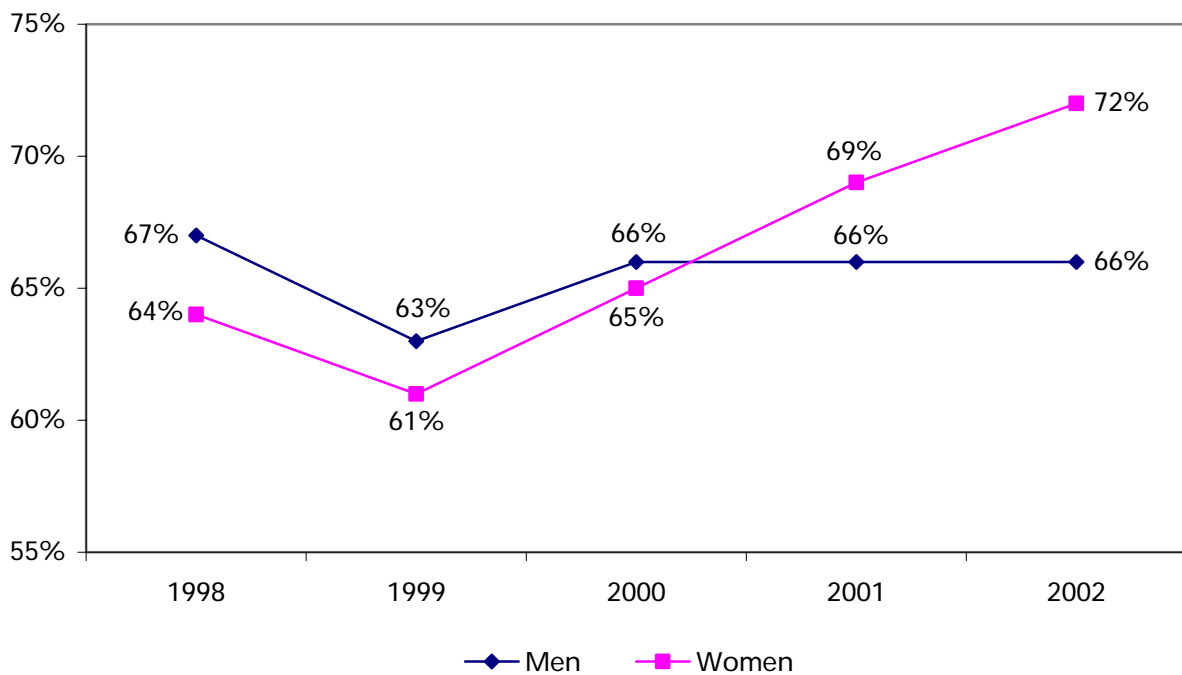
¹ The drugs included in the urinalysis testing are barbiturates, benzodiazepines (tranquilizers), cocaine, marijuana, methadone, methamphetamine, methaqualone (Quaaludes), opiates, phencyclidine (PCP), and propoxyphene (Darvon).

Comparisons Over Time

Any Illicit Drug

The rate at which women have been testing positive for any illicit drug has increased steadily from 1999 (61%) to 2002 (72%) (Figure 3.2). The proportion of positive test results for any drug has remained relatively stable for men in the past five years, from 67 percent in 1998, dipping to 63 percent in 1999, and staying at 66 percent from 2000 to 2002.

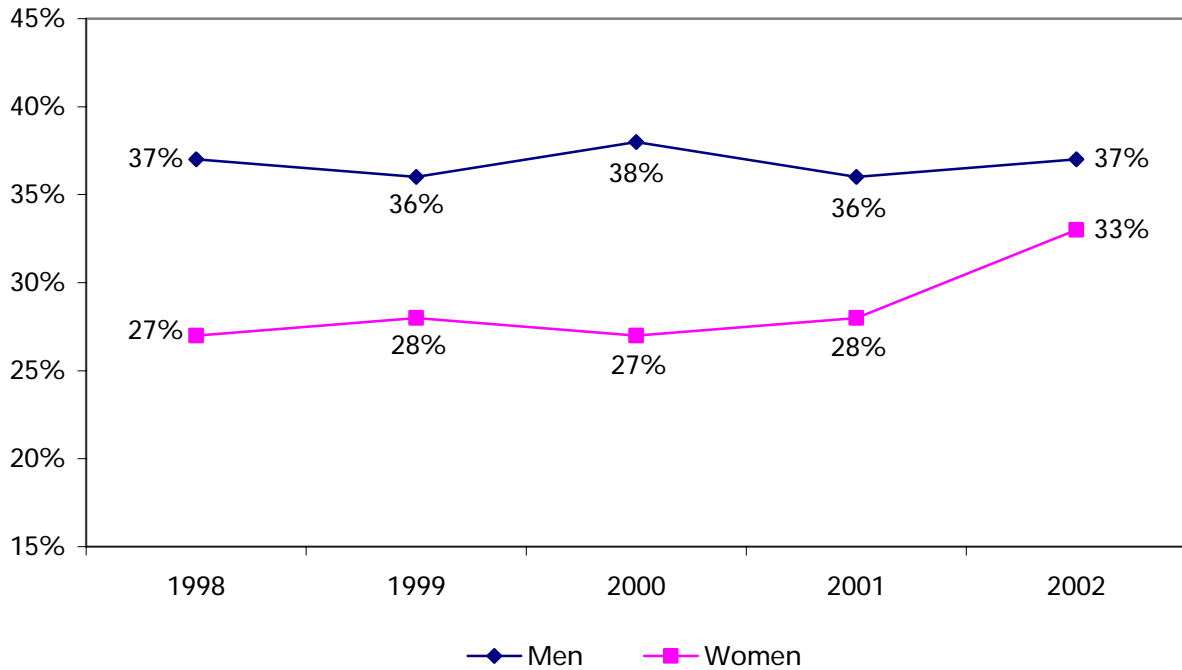
Figure 3.2
POSITIVE URINALYSIS FOR ANY ILLICIT DRUG BY GENDER
Adult Arrestees, San Diego Region, 1998 to 2002



Marijuana

Historically, men have tested positive for marijuana at a greater rate than women (Figure 3.3). Positive tests for marijuana were stable in the past five years for both genders, with the exception of an abrupt increase for women from 2001 (28%) to 2002 (33%).

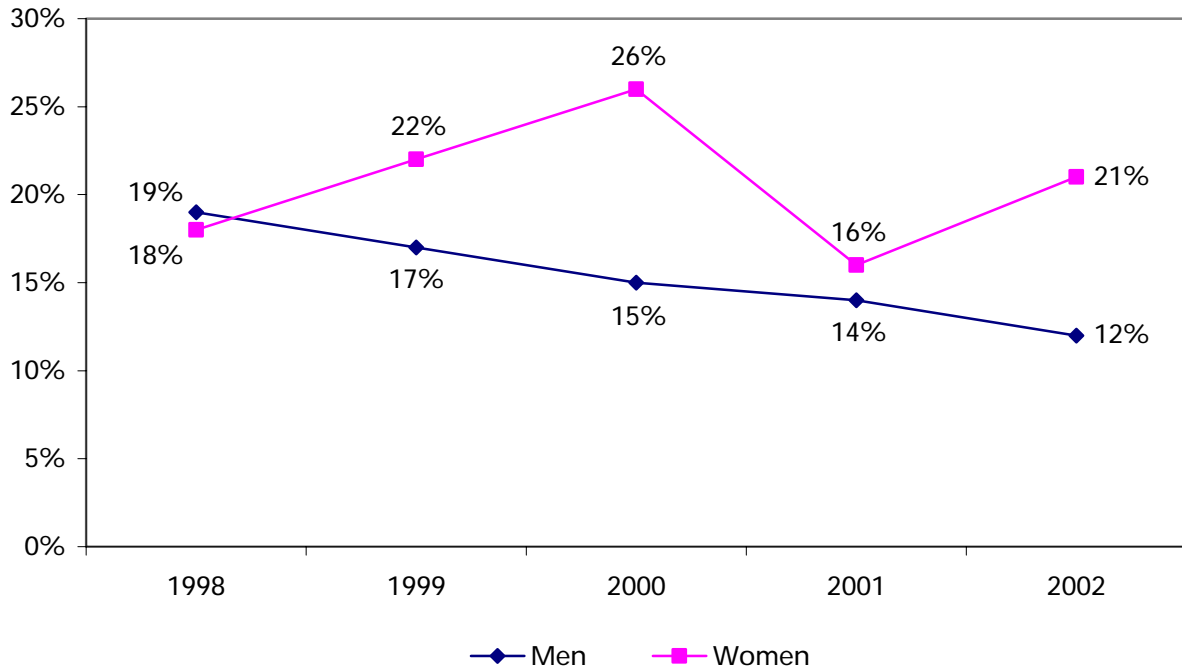
Figure 3.3
POSITIVE URINALYSIS FOR MARIJUANA BY GENDER
Adult Arrestees, San Diego Region, 1998 to 2002



Cocaine

The rate at which men have tested positive for cocaine has decreased steadily from 1998 (19%) to 2002 (12%) (Figure 3.4). During the same comparison years, positive cocaine tests for women have fluctuated between a low of 16 percent in 2001 to a high of 26 percent in 2000.

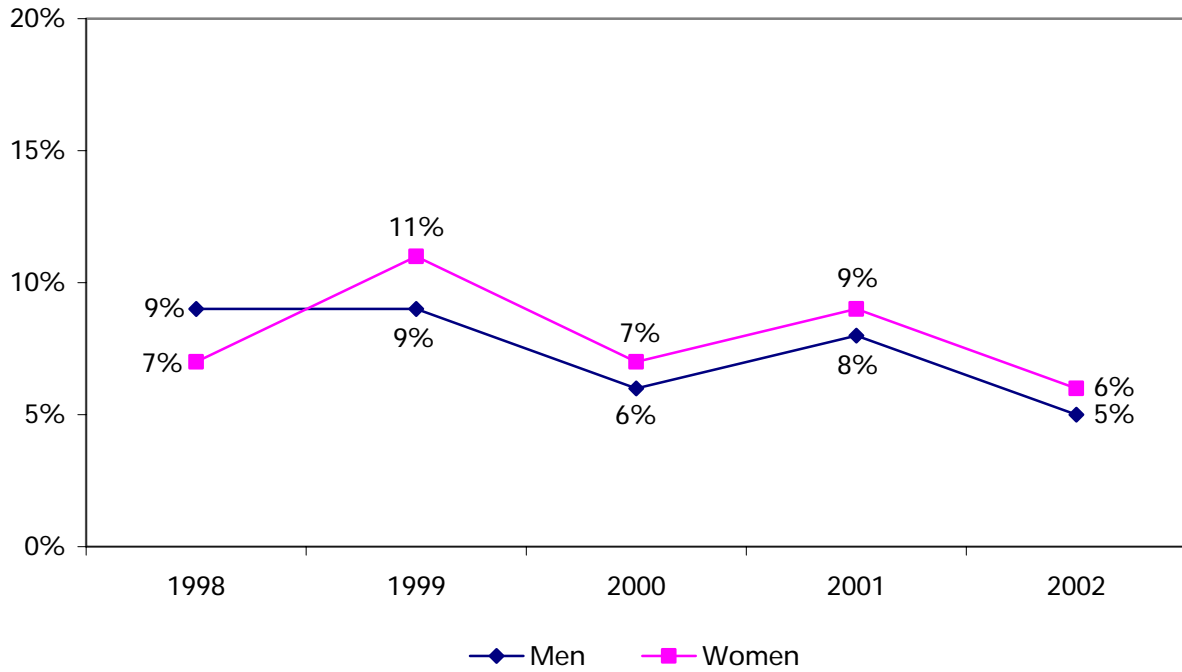
Figure 3.4
POSITIVE URINALYSIS FOR COCAINE BY GENDER
Adult Arrestees, San Diego Region, 1998 to 2002



Heroin

Men and women have tested positive for heroin at about the same rate over the past five years (Figure 3.5). The rates have remained relatively low during this comparison period, between five percent for men in 2002 and eleven percent for women in 1999.

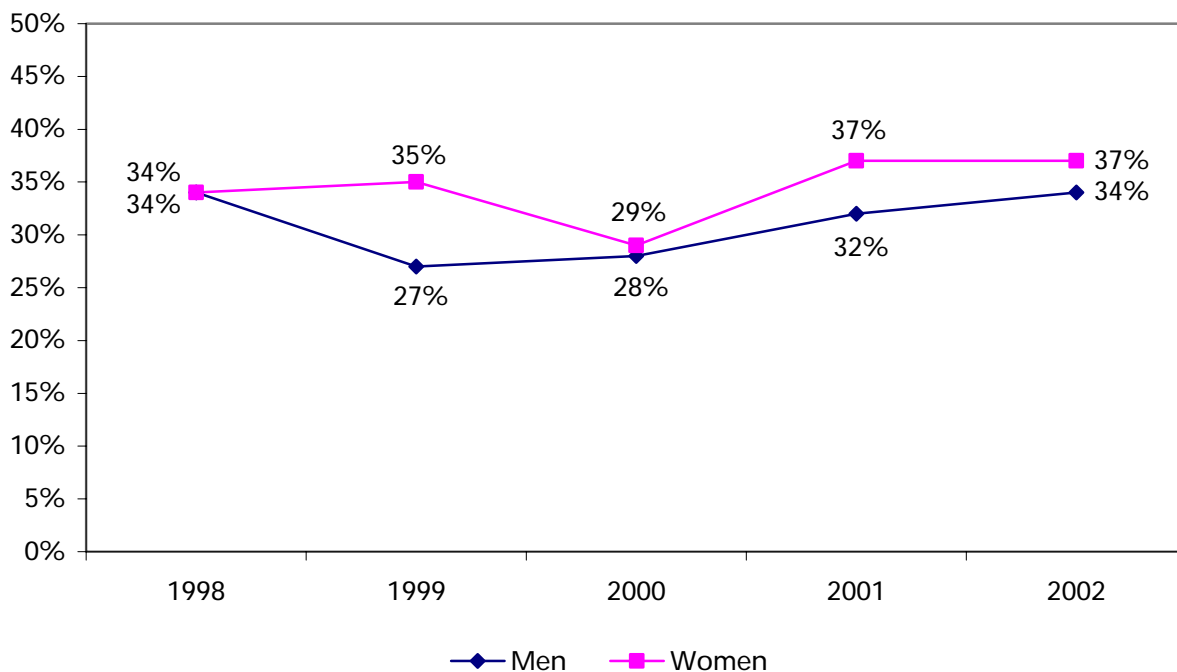
Figure 3.5
POSITIVE URINALYSIS FOR HEROIN BY GENDER
Adult Arrestees, San Diego Region, 1998 to 2002



Methamphetamine

While the rates for testing positive for cocaine have steadily decreased for men in the past few years, the rates for men testing positive for methamphetamine have increased during the same time period (from 27% in 1999 and returning to the 1998 level of 34% in 2002) (Figure 3.6). This reversal in positive rates (i.e., more men using methamphetamine and fewer using cocaine) is reflected in the stable rate of men testing positive for any illicit drug in the past three years. The pattern of methamphetamine use among women was not as distinct, with slight fluctuations in positive tests between 1998 (34%) and 2002 (37%).

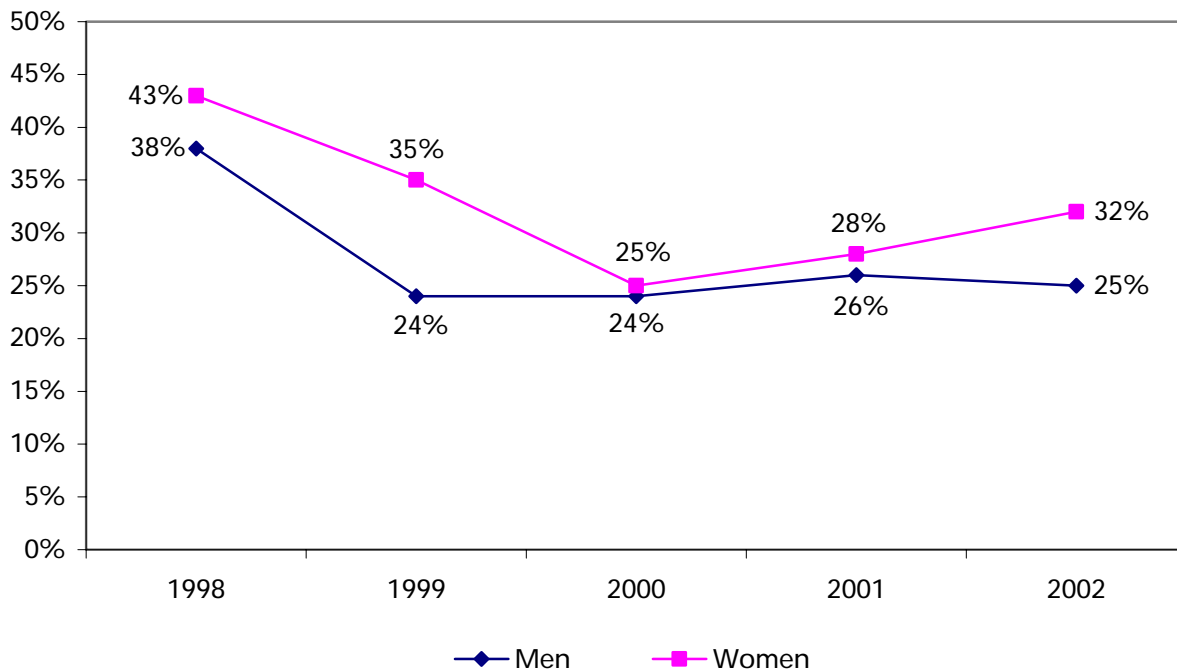
Figure 3.6
POSITIVE URINALYSIS FOR METHAMPHETAMINE BY GENDER
Adult Arrestees, San Diego Region, 1998 to 2002



Multiple Drugs

In the past five years, women have generally tested positive for more than one drug at greater rates than men (Figure 3.7). Testing positive for multiple drugs decreased for women between 1998 (43%) and 2000 (25%) but has since risen to 32 percent in 2002. During the same comparison period, multiple drug use decreased for men from 1998 (38%) to 1999 (24%) and has remained relatively stable through 2002.

Figure 3.7
POSITIVE URINALYSIS FOR MULTIPLE DRUGS BY GENDER
Adult Arrestees, San Diego Region, 1998 to 2002



Comparison with Other ADAM Sites

In contrast to previous years, the San Diego ADAM site is no longer one of the leading sites with respect to high percentages of adult arrestees showing recent drug use. In fact, San Diego's ranking of adult male arrestees testing positive for any illicit drug is 19th (63.8%) out of the 36 sites (Table 3.1). The highest percent of drug use for men in 2002 was in Chicago (85.2%), while the lowest was in the newest ADAM site, Woodbury, Iowa (42.8%). Compared to the national median, San Diego male arrestees showed lower positive results for marijuana (41.5% versus 37.8%, respectively), cocaine (30.4% versus 12.7%), and opiates (5.9% versus 5.6%), but showed higher positive rates for methamphetamine (5.3% versus 31.7%). The top five sites for each category are shaded in Table 3.1.

For sites that tested women, the range for any drug use was 75.9 percent (Indianapolis) to 25.9 percent (Laredo, Texas), with San Diego ranking eighth (69.0%) out of 23 sites (Table 3.2). Compared to the national median, San Diego female arrestees showed lower positive results for cocaine (30.7% versus 21.2%) and opiates (6.2% versus 5.8%) but showed higher positive rates for marijuana (28.4% versus 33.3%) and methamphetamine (12.0% versus 36.8%). The top three sites for each category are shaded in Table 3.2.

Table 3.1
ADAM SITES POSITIVE DRUG TESTING RATES, WEIGHTED
Adult Male Arrestees, 2002

Primary City	Marijuana	Cocaine	Opiates	Metham- phetamine	Any of 5 Drugs¹	Multiple Drugs
Albany, NY	54.5	25.5	6.4	0.0	70.0	17.3
Albuquerque, NM	34.2	37.5	9.8	6.7	61.9	24.2
Anchorage, AK	48.7	20.4	3.4	1.5	61.4	11.0
Atlanta, GA	35.2	49.4	3.4	2.1	70.7	18.1
Birmingham, AL	41.6	34.3	6.0	0.6	63.6	17.6
Charlotte, NC	44.4	33.7	3.4	0.2	61.8	18.9
Chicago, IL	49.4	47.9	26.0	0.3	85.2	33.8
Cleveland, OH	51.1	34.6	5.5	1.5	71.9	23.4
Dallas, TX	35.3	30.7	6.1	4.0	58.0	17.8
Denver, CO	40.3	32.7	4.0	3.8	61.7	17.9
Des Moines, IA	41.8	10.2	2.3	20.2	56.0	18.5
Honolulu, HI	32.2	9.1	3.5	44.8	62.9	23.0
Indianapolis, IN	46.7	34.9	4.8	1.5	66.0	21.1
Laredo, TX	26.1	36.2	6.5	0.0	46.4	19.6
Las Vegas, NV	34.7	24.2	5.6	22.9	64.0	20.9
Los Angeles, CA	36.4	32.1	5.8	14.8	62.3	23.3
Minneapolis, MN	54.2	30.8	5.1	3.9	73.5	21.0
New Orleans, LA	46.9	42.4	17.4	1.3	71.6	29.3
New York, NY	44.3	49.0	15.0	0.5	81.0	26.1
Oklahoma City, OK	54.1	25.5	3.3	14.3	72.1	25.7
Omaha, NE	40.8	21.1	2.0	21.0	61.3	21.6
Philadelphia, PA	47.7	38.7	15.9	0.0	76.2	30.8
Phoenix, AZ	41.5	27.1	5.0	31.2	71.1	29.7
Portland, OR	37.5	22.3	10.5	21.9	66.3	24.2
Rio Arriba, NM	38.2	30.1	21.5	0.0	61.7	23.2
Sacramento, CA	50.9	20.9	6.2	33.5	78.7	31.3
Salt Lake City, UT	35.5	19.3	8.5	21.9	59.6	21.7
San Antonio, TX	42.0	32.5	11.0	2.3	62.9	20.0
San Diego, CA	37.8	12.7	5.6	31.7	63.8	22.5
San Jose, CA	34.0	13.0	3.4	29.9	58.5	21.1
Seattle, WA	38.5	38.1	10.0	10.9	70.1	23.8
Spokane, WA	47.3	15.9	7.5	22.3	64.8	23.0
Tucson, AZ	47.2	42.5	6.5	9.2	71.3	30.4
Tulsa, OK	52.3	22.5	5.4	15.3	70.4	24.3
Washington, D.C.	40.7	27.5	9.5	0.0	63.6	21.4
Woodbury, IA	28.3	11.5	0.0	16.4	42.8	12.8
Median	41.5	30.4	5.9	5.3	63.9	22.1

¹The five drugs are cocaine, marijuana, methamphetamine, opiates, and phencyclidine (PCP).

NOTE: Data are weighted.

SOURCE: U.S. Department of Justice

Table 3.2
ADAM SITES POSITIVE DRUG TESTING RATES, WEIGHTED
Adult Female Arrestees, 2002

Primary City	Marijuana	Cocaine	Opiates	Methamphetamine	Any of 5 Drugs¹	Multiple Drugs
Albany, NY	32.3	38.7	12.9	0.0	67.7	19.4
Albuquerque, NM	26.7	48.7	16.4	12.3	69.7	30.3
Anchorage, AK	28.4	49.4	6.2	0.0	67.9	16.0
Charlotte, NC	37.9	38.4	2.8	0.5	63.5	15.2
Cleveland, OH	26.2	42.9	6.2	0.9	64.4	15.9
Denver, CO	33.3	44.6	5.4	6.8	68.0	22.5
Des Moines, IA	32.3	12.5	2.1	24.0	55.2	13.5
Honolulu, HI	20.6	7.4	5.9	50.0	60.3	20.6
Indianapolis, IN	38.8	55.2	8.2	1.7	75.9	26.7
Laredo, TX	7.4	11.1	7.4	0.0	25.9	3.7
New Orleans, LA	26.0	42.2	9.2	0.6	59.4	16.5
New York, NY	30.6	38.9	13.9	0.0	61.1	19.4
Oklahoma City, OK	43.0	30.4	6.0	17.7	67.1	27.8
Omaha, NE	28.0	30.0	2.0	12.0	60.0	14.0
Phoenix, AZ	29.4	26.2	5.2	41.7	70.6	28.1
Portland, OR	21.6	28.4	18.2	22.7	67.0	22.7
Salt Lake City, UT	25.4	30.7	16.7	37.7	73.7	31.6
San Diego, CA	33.3	21.2	5.8	36.8	69.0	27.0
San Jose, CA	26.9	12.4	1.4	42.8	66.9	19.3
Tucson, AZ	25.1	45.4	9.2	14.3	70.1	23.1
Tulsa, OK	33.8	26.9	7.6	26.9	72.4	22.1
Washington, D.C.	33.3	38.5	17.9	0.0	74.4	25.6
Woodbury, IA	13.0	26.1	0.0	0.0	39.1	0.0
Median	28.4	30.7	6.2	12.0	67.1	20.6

¹The five drugs are cocaine, marijuana, methamphetamine, opiates, and phencyclidine (PCP).

NOTE: Data are weighted.

SOURCE: U.S. Department of Justice

San Diego County has a long history of methamphetamine production, trafficking, and use, visibly emerging in the early 1990s. In the last ten years, a number of enforcement and prevention strategies were initiated to address the methamphetamine producers, sellers, and users, such as the San Diego County Methamphetamine Strike Force, which was authorized by the San Diego County Board of Supervisors in 1996. The Meth Strike Force is composed of approximately 70 member organizations and agencies, including local, state, and federal representatives from public health, law enforcement, judiciary, education, treatment, prevention, and intervention agencies. One of the many initiatives this group is involved with is a hotline and Web site where people can anonymously report methamphetamine-related criminal activity they have observed or obtain information regarding treatment.

With the addition of Honolulu as a new ADAM site in 2000, California ceased to be the state with the highest meth use in the ADAM program. For men, Honolulu (44.8%) and Sacramento (33.5%) arrestees showed higher positive methamphetamine results in 2002 than San Diego (31.7%), with Phoenix (31.2%) and San Jose (29.9%) trailing close behind (Table 3.1). In 2002, San Diego women (36.8%) ranked lower among those sites that test women than in previous years, specifically, behind Honolulu (50.0%), San Jose (42.8%), Phoenix (41.7%), and Salt Lake City (37.7%) (Table 3.2). It is clear from Figure 3.8 that, although the use of meth in the arrestee population appears to be emerging in the Midwest and eastward, it still predominates in the ADAM sites in the West. Nebraska and Washington are the newest members of the highest positive meth category in 2002, resulting from increases in positive meth rates among their arrestees since 2000.

Figure 3.8
PERCENT POSITIVE FOR METHAMPHETAMINE BY ADAM SITE, WEIGHTED
Adult Male Arrestees, 2002



NOTE: In states with more than one ADAM site, the one with the highest positive percentage is presented.
SOURCES: U.S. Department of Justice; SANDAG

Self-Reported Use

Arrestees were asked if they ever had five or more drinks of beer, wine, or any other type of alcohol on the same day, and if they had ever tried any of the following drugs: marijuana, crack or rock cocaine, powder cocaine, heroin, or methamphetamine. The majority (84%) of men reported ever having five or more drinks on the same day (Table 3.3). Three-fourths (75%) admitted to ever using marijuana and more than half (54%) had tried methamphetamine. Fewer had tried powder cocaine (43%), crack cocaine (29%), or heroin (19%). Not surprisingly, drug use rates for arrestees are higher than those for the general adult population, as collected by the National Survey on Drug Use and Health (SAMHSA, 2003). For example, 40 percent of the adult U.S. residents surveyed admitted to having used marijuana, 14 percent cocaine, and 2 percent heroin (not shown).

Table 3.3
SELF-REPORTED DRUG USE COMPARED TO POSITIVE DRUG RESULT
Adult Male Arrestees, San Diego Region, 2002

	Ever Tried	Mean Age First Tried	Used in Past 30 Days¹	Positive Drug Test¹
Alcohol ²	84%	16.3	59%	na ³
Marijuana	75%	14.8	55%	48%
Methamphetamine	54%	21.1	56%	56%
Powder Cocaine	43%	20.1	13%	20%
Crack Cocaine	29%	23.1	26%	28%
Heroin	19%	21.9	26%	20%
TOTAL	748-749	137-625	140-562	140-562

¹ Based upon respondents who admitted ever using

² Ever had five or more drinks of alcohol on the same day

³ ADAM does not test for this substance

NOTE: Cases with missing information are not included.

The average age when arrestees first drank five or more drinks in a day was 16.3 (Table 3.3). The average age of first experimenting with marijuana was slightly younger at 14.8. The average reported age for first trying the rest of the substances was 20 years or over: 20.1 for powder cocaine, 21.1 for methamphetamine, 21.9 for heroin, and 23.1 for crack cocaine.

Table 3.3 also illustrates the congruence between male arrestees' self-reported drug use and urinalysis results. For example, the least congruence was shown for arrestees who admitted to using powder cocaine; 13 percent of those who had ever tried it admitted to using it in the past 30 days but 20 percent tested positive for cocaine. This discrepancy could be explained in part to the fact that the test for powder cocaine is the same as that for crack cocaine, so that men who admitted using crack but not powder show positive for both.

On the other hand, more men admitted to using marijuana in the past 30 days (55%) than who tested positive for it (48%). This lack of correspondence could be explained in part to some arrestees having used marijuana early in the past 30 days or not having used enough of it to test

positive for it at the time of their arrest. This explanation can also account for the difference between admitted use of heroin (26% in the past 30 days of those who ever tried it) and testing positive for heroin (20% of those who ever tried it). The congruence between admitted use and positive tests were stronger for both methamphetamine and crack cocaine. Urinalysis testing was used to verify self-reported responses; however, because of the varying times that different drugs can be detected in the body, neither measure perfectly accounts for recent drug use. In fact, detection times for all drugs depend upon many factors, including the user's amount and frequency of use, metabolic rate, body mass, age, overall health, drug tolerance, and urine pH (NIDA, 1999).

Fewer women (67%) than men (84%) reported ever drinking five or more drinks on the same day (Tables 3.3 and 3.4). This standard may be gender-biased because of the differences in the effects of alcohol between males and females. For example, according to research reported by the National Institute on Alcohol Abuse and Alcoholism, women achieve higher concentrations of alcohol in the blood and become more impaired than men after drinking equivalent amounts of alcohol. In the ADAM sample, there were also fewer women than men who reported ever trying powder cocaine (35% versus 43%, respectively) or heroin (12% versus 19%, respectively). However, women were more likely than men to report ever using crack cocaine (34% versus 29%, respectively). The rates by gender of ever using marijuana and methamphetamine were approximately the same. On average, women first tried these substances at around the same ages as the men, with the exception of alcohol, which women tried at a slightly older age (17.5) than men (16.3) (Tables 3.3 and 3.4).

Table 3.4
SELF-REPORTED DRUG USE COMPARED TO POSITIVE DRUG RESULT
Adult Female Arrestees, San Diego Region, 2002

	Ever Tried	Mean Age First Tried	Used in Past 30 Days¹	Positive Drug Test¹
Marijuana	77%	15.1	52%	41%
Alcohol ²	67%	17.5	51%	na ³
Methamphetamine	55%	21.6	55%	58%
Powder Cocaine	35%	19.9	7%	31%
Crack Cocaine	34%	23.5	37%	44%
Heroin	12%	21.9	29%	31%
TOTAL	343-345	40-263	42-264	42-264

¹ Based upon respondents who admitted ever using

² Ever had five or more drinks of alcohol on the same day

³ ADAM does not test for this substance

NOTE: Cases with missing information are not included.

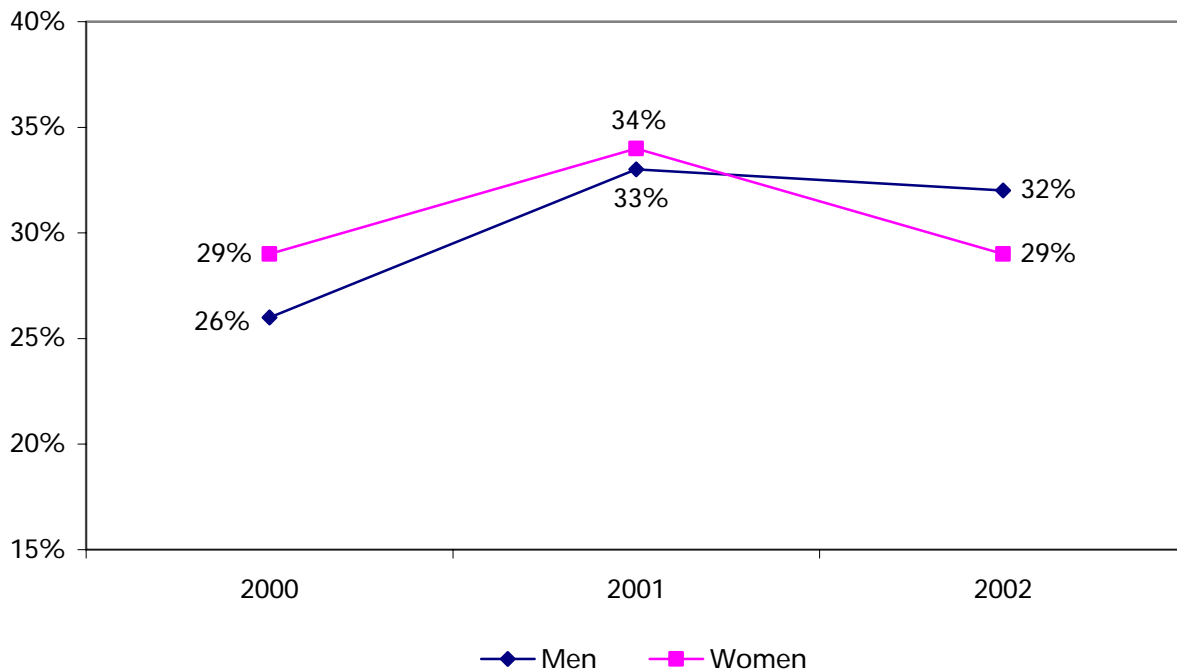
Table 3.4 also demonstrates the congruence between female arrestees' self-reported drug use and urinalysis results. For example, similar to the males, the least congruence was shown for female arrestees who admitted to using powder cocaine in the past 30 days (7%) of those who had ever tried it and their rate of testing positive for cocaine (31%). The same explanation as for men can account for this incongruence, that the test for powder cocaine is the same as for crack cocaine so that women who admitted using crack but not powder show positive for both. The similar findings

for crack cocaine (37% admitted using in past 30 days while 44% tested positive) can also be accounted for by this explanation. On the other hand, as with the men, more women admitted to using marijuana in the past 30 days (52%) than who tested positive for it (41%). As mentioned earlier, this difference can be explained in part by some women not using marijuana recently enough or in quantities large enough for testing to detect it in their urine sample at the time of their arrest. The most congruence was found with heroin (29% reported using and 31% tested positive) and methamphetamine (55% reported using and 58% tested positive).

Self-Reported Use of Other Drugs

In 2000, 29 percent of women and 26 percent of men reported ever using some other type of drug (aside from marijuana, crack cocaine, powder cocaine, heroin, and methamphetamine) that was not sold over the counter or obtained through their own prescription (Figure 3.9). These percentages increased in 2001 for both genders (to 34% women and 33% men), then stabilized in 2002 for men (32%) but dropped back to 29 percent for women.

Figure 3.9
SELF-REPORTED OTHER DRUG USE BY YEAR AND GENDER
Adult Arrestees, San Diego Region, 2000 to 2002



Those arrestees who reported ever using another substance besides marijuana, crack cocaine, powder cocaine, heroin, or methamphetamine were then asked the name of the other type of drug that they had used most frequently. For all three years, the drugs mentioned most often were LSD (or acid), mushrooms, PCP, and Ecstasy (or MDMA). Table 3.5 shows the percentages of those who reported using another drug by gender for the three years that this question was asked on the ADAM instrument. In all, LSD use dropped for both genders between 2000 and 2002. In its place, adults, especially women, reported a higher use of Ecstasy in this time span. The use of mushrooms remained relatively stable between 11 percent and 12 percent for men and between 7 and 8 percent for women between 2000 and 2002. In 2002, "other" drugs included depressants (such as barbiturates, downers, GHB, Quaaludes, roaches, roofies, Valium, and Xanax), narcotics (such as codeine, Dilaudid, morphine, and Vicodin), hallucinogens (such as bella donna, ketamine, mescaline, and sherm), and stimulants (such as bennies, rush, and speed).

Table 3.5
SELF-REPORTED OTHER DRUG USE BY YEAR AND GENDER
Adult Arrestees, San Diego Region, 2000 to 2002

	<i>Men</i>			<i>Women</i>		
	2000	2001	2002	2000	2001	2002
LSD/Acid	52%	43%	46%	48%	31%	38%
Mushrooms	12%	12%	11%	8%	8%	7%
PCP	11%	9%	9%	13%	15%	14%
Ecstasy/MDMA	10%	13%	16%	8%	34%	21%
Other	16%	23%	18%	23%	11%	20%
TOTAL	147	164	221	75	61	86

NOTE: Cases with missing information are not included. Percentages may not equal 100 due to rounding.

Age

Overall, men 26 years old and over were *less* likely to test positive for any illicit drug than younger men (25 and under), although these differences were not statistically significant (Table 3.6). The differences by age for men were most apparent in their use of marijuana, for which over half (55%) of men 25 and under tested positive while one-third (33%) of men age 26 to 30 and one-quarter (26%) of men age 31 and over tested positive. On the other hand, older men (15% of those 31 and over) were more than twice as likely to test positive for cocaine than younger men (7% for ages 25 and under). Men of all ages were about equally likely to test positive for methamphetamine, heroin, and multiple drugs.

Table 3.6
POSITIVE DRUG RESULT BY AGE
Adult Male Arrestees, San Diego Region, 2002

	25 and Under	26 to 30	31 and Over
Any Drug	72%	63%	63%
Marijuana	55%	33%	26%
Methamphetamine	33%	37%	34%
Cocaine	7%	11%	15%
Heroin	4%	2%	7%
Multiple Drugs	27%	26%	24%
TOTAL	266	107	376

Unlike men, older women (26 years old and over) were *more* likely to test positive for drugs than younger women (25 and under), but these differences, again, were not statistically significant (Table 3.7). About one-third (32%) of women 25 and under tested positive for methamphetamine, while 46 percent of 26- to 30-year-olds and 37 percent of women 31 and over tested positive for methamphetamine. Similar to men, older women (31 and over) were more than twice as likely to test positive for cocaine (29%) than younger women (12% for age 25 and under). Multiple drug use also increased with age, from over one-quarter (28%) of women age 25 and under to over one-third (36%) of women age 31 and over. The only drug for which younger women were more likely to test positive for was marijuana (42%), compared to older women (34% for age 26 to 30 and 28% for age 31 and over).

Table 3.7
POSITIVE DRUG RESULT BY AGE
Adult Female Arrestees, San Diego Region, 2002

	25 and Under	26 to 30	31 and Over
Any Drug	64%	73%	77%
Marijuana	42%	34%	28%
Methamphetamine	32%	46%	37%
Cocaine	12%	14%	29%
Heroin	3%	7%	7%
Multiple Drugs	28%	27%	36%
TOTAL	109	56	180

Ethnicity

Hispanic males (58%) were significantly less likely than White (71%) or Black (76%) males to test positive for any drug, which was reflected in their lower rates of testing positive for marijuana (30% versus 44% for White and Black males) (Table 3.8). White males were the most likely to test positive for methamphetamine (41%), almost three times the positive test rate for Black males (14%). However, Black males were significantly more likely to test positive for cocaine (38%) than the other ethnicities (between 0% and 8%).

Table 3.8
POSITIVE DRUG RESULT BY ETHNICITY
Adult Male Arrestees, San Diego Region, 2002

	White	Black	Hispanic	Other
Any Drug	71%	76%	58%	49%
Marijuana	44%	44%	30%	11%
Methamphetamine	41%	14%	36%	41%
Cocaine	5%	38%	8%	0%
Heroin	7%	5%	5%	0%
Multiple Drugs	30%	26%	21%	8%
TOTAL	303	133	276	37

Similar to the men, Hispanic women were significantly less likely to test positive for any illicit drug (57%) than White (77%) or Black (78%) women (Table 3.9). Again, Black female arrestees were the *least* likely to test positive for methamphetamine (11%), about one-fourth the rate for White or Hispanic females. Also, like their male counterparts, Black female arrestees were the *most* likely to test positive for cocaine (51%), over four times the rate for White or Hispanic females.

Table 3.9
POSITIVE DRUG RESULT BY ETHNICITY
Adult Female Arrestees, San Diego Region, 2002

	White	Black	Hispanic	Other
Any Drug	77%	78%	57%	68%
Marijuana	38%	33%	30%	14%
Methamphetamine	46%	11%	41%	55%
Cocaine	12%	51%	11%	9%
Heroin	7%	5%	4%	5%
Multiple Drugs	38%	28%	27%	18%
TOTAL	164	85	74	22

Arrest Charge

Contrary to popular belief, males charged with a violent offense as their highest charge at the time of arrest were significantly less likely to test positive for any illicit drug (53%) than those charged with an "other" (60%), drug or alcohol (75%), or property (78%) offense as their highest charge (Table 3.10). Over half (51%) of the men charged with a property offense tested positive for methamphetamine. Over one-third (37%) of those charged with a drug or alcohol offense as their highest charge tested positive for methamphetamine, while one in five (20%) of these male arrestees also tested positive for cocaine, which was more than twice the rate for arrestees charged with other types of crimes (between 7% and 9%).

Table 3.10
POSITIVE DRUG RESULT BY HIGHEST ARREST CHARGE
Adult Male Arrestees, San Diego Region, 2002

	Violent	Drug/Alcohol	Property	Other
Any Drug	53%	75%	78%	60%
Marijuana	32%	39%	39%	40%
Methamphetamine	28%	37%	51%	26%
Cocaine	7%	20%	8%	9%
Heroin	2%	9%	8%	3%
Multiple Drugs	18%	32%	30%	21%
TOTAL	184	257	114	193

NOTE: Cases with missing information are not included.

Comparable to the men, female arrestees charged with a violent crime as their highest charge were significantly less likely to test positive for any illicit drug (63%) than those arrested for drug/alcohol, property, or other crimes (Table 3.11). In fact, no women arrested on a violent offense as their highest charge tested positive for heroin. Positive tests for marijuana were relatively equal among the four categories of crime (between 29% and 36%). However, women arrested on “other” types of charges (e.g., probation violation, resisting arrest, disorderly conduct) were more likely to test positive for cocaine (36%) than those arrested for the other offense types (between 12% and 23%).

Table 3.11
POSITIVE DRUG RESULT BY HIGHEST ARREST CHARGE
Adult Female Arrestees, San Diego Region, 2002

	Violent	Drug/Alcohol	Property	Other
Any Drug	63%	81%	71%	66%
Marijuana	34%	36%	33%	29%
Methamphetamine	29%	48%	38%	18%
Cocaine	19%	23%	12%	36%
Heroin	0%	6%	9%	5%
Multiple Drugs	23%	40%	32%	25%
TOTAL	62	131	95	56

NOTE: Cases with missing information are not included.

Area of Residence

There were no statistically significant differences in testing positive for any illicit drug relative to the different areas where male arrestees lived (Table 3.12). However, the biggest difference was for cocaine, in which one-fifth (19%) of the male residents of the Central MSA tested positive for that drug compared to between five and eleven percent of residents from other areas of the county. For methamphetamine, North County East (51%) and South Suburban (49%) arrestees were more likely to test positive than did male arrestees residing in other areas (between 27% and 39%). Because of the high correlation with area of residence, the results were similar and also not significant for area of arrest (not shown).

Table 3.12
POSITIVE DRUG RESULT BY AREA OF RESIDENCE
Adult Male Arrestees, San Diego Region, 2002

	Central	North City	South Suburban	East Suburban	North County West	North County East
Any Drug	68%	73%	72%	61%	61%	66%
Marijuana	37%	47%	40%	35%	39%	37%
Cocaine	19%	11%	8%	5%	7%	6%
Heroin	6%	0%	2%	8%	4%	4%
Methamphetamine	29%	27%	49%	36%	39%	51%
Multiple Drugs	27%	24%	26%	27%	33%	28%
TOTAL	203	45	53	77	46	67

NOTE: Cases with missing information are not included. The East County area is not included because the number of cases was less than ten.

Keeping in mind that these data do not include women booked into the Vista Detention Facility (which accepts the majority of women arrested in the North County area), women from the East Suburban area were the most likely to test positive for any illicit drug (82%) compared to female arrestees from other areas of the county (65% to 76%), but these differences were not statistically significant (Table 3.13). Marijuana and methamphetamine use were most prevalent among female residents of South Suburban (44% and 50%, respectively) and East Suburban (38% and 53%, respectively), while Central (34%) and North City (25%) arrestees were more likely than those from other areas to test positive for cocaine. Again, because of the high correlation with location of residence, the results were similar and also not significant for location of arrest (not shown).

**Table 3.13
POSITIVE DRUG RESULT BY AREA OF RESIDENCE
Adult Female Arrestees, San Diego Region, 2002**

	Central	North City	South Suburban	East Suburban
Any Drug	76%	65%	72%	82%
Marijuana	27%	30%	44%	38%
Cocaine	34%	25%	13%	13%
Heroin	6%	0%	9%	0%
Methamphetamine	35%	35%	50%	53%
Multiple Drugs	31%	30%	41%	40%
TOTAL	106	20	32	45

NOTE: Cases with missing information are not included. The North County East, North County West, and East County areas are not included because the number of cases was less than ten for each.

Education

Having graduated from high school was not significantly related to a male arrestee's likelihood of testing positive for any illicit drug, with similar percentages testing positive for arrestees who graduated (67%) and for those who did not (65%) (Table 3.14). High school graduates were slightly *more* likely to test positive for marijuana (39%) than non-graduates (34%) but *less* likely to test positive for methamphetamine (32% versus 39%, respectively).

Table 3.14
POSITIVE DRUG RESULT BY EDUCATION
Adult Male Arrestees, San Diego Region, 2002

	Graduated from High School	Did Not Graduate from High School
Any Drug	67%	65%
Marijuana	39%	34%
Cocaine	13%	10%
Heroin	5%	7%
Methamphetamine	32%	39%
Multiple Drugs	25%	25%
TOTAL	523	225

NOTE: Cases with missing information are not included.

Unlike the males, female arrestees who graduated from high school were slightly less likely to test positive for any illicit drug (71%) compared to non-graduates (76%), but this difference was not statistically significant (Table 3.15). The biggest difference for women was in testing positive for methamphetamine, in which high school graduates (34%) tested positive at a lower rate than non-graduates (46%).

Table 3.15
POSITIVE DRUG RESULT BY EDUCATION
Adult Female Arrestees, San Diego Region, 2002

	Graduated from High School	Did Not Graduate from High School
Any Drug	71%	76%
Marijuana	33%	36%
Cocaine	22%	19%
Heroin	5%	7%
Methamphetamine	34%	46%
Multiple Drugs	32%	32%
TOTAL	255	90

Although high school graduation status was not a significant predictor of testing positive for any illicit drug, those with lower education levels among all adults were significantly more likely to test positive than those who attained greater educational degrees. For instance, 72 percent of those whose highest educational degree was a high school diploma or GED tested positive for any drug, compared to 47 percent of arrestees who reported having at least a four-year college degree (not shown).

Employment Status

Arrestees who reported that they were currently working, either full- or part-time, were significantly less likely to test positive for any illicit drug (64%), compared to arrestees who were not working (70%) (Table 3.16). This difference was most apparent for men testing positive for cocaine (10% of working arrestees versus 15% of arrestees who were not working), methamphetamine (32% versus 37%, respectively), and multiple drugs (23% versus 28%, respectively).

Table 3.16
POSITIVE DRUG RESULT BY EMPLOYMENT STATUS
Adult Male Arrestees, San Diego Region, 2002

	Working	Not Working
Any Drug	64%	70%
Marijuana	38%	35%
Cocaine	10%	15%
Heroin	5%	6%
Methamphetamine	32%	37%
Multiple Drugs	23%	28%
TOTAL	457	291

NOTE: Cases with missing information are not included.

As with the males, female arrestees who reported that they were currently working were also significantly less likely to test positive for any illicit drug (66%) than non-working arrestees (76%) (Table 3.17). This difference was especially apparent in testing positive for marijuana, which occurred with over one-third (36%) of non-working female arrestees and 28 percent of working female arrestees.

Table 3.17
POSITIVE DRUG RESULT BY EMPLOYMENT STATUS
Adult Female Arrestees, San Diego Region, 2002

	Working	Not Working
Any Drug	66%	76%
Marijuana	28%	36%
Cocaine	23%	20%
Heroin	4%	7%
Methamphetamine	33%	39%
Multiple Drugs	30%	33%
TOTAL	122	222

NOTE: Cases with missing information are not included.

Among all adults, those who reported being unemployed and not looking for work (90%) and those who said that they were homemakers (88%) were significantly more likely to test positive for any illicit drug than the other arrestees, including those who reported being disabled for work (66%) and in school only (58%) (not shown).

Health Insurance

Male arrestees with health insurance were significantly less likely to test positive for any illicit drug than those who reported not having health insurance coverage. This difference was most evident in methamphetamine tests, with 27 percent of those covered by health insurance and 38 percent of those *not* covered by health insurance testing positive for this drug (Table 3.18).

Table 3.18
POSITIVE DRUG RESULT BY HEALTH INSURANCE STATUS
Adult Male Arrestees, San Diego Region, 2002

	Has Health Coverage	Does Not Have Health Coverage
Any Drug	58%	70%
Marijuana	36%	38%
Cocaine	13%	11%
Heroin	2%	7%
Methamphetamine	27%	38%
Multiple Drugs	21%	28%
TOTAL	263	479

NOTE: Cases with missing information are not included.

Similar to the males, female arrestees who reported having health care coverage were significantly less likely to test positive for any illicit drug (69%) than those who did not report such coverage (75%) (Table 3.19). Again, the biggest difference was with methamphetamine, with 30 percent of those with coverage and 44 percent of those without coverage testing positive for this drug.

Table 3.19
POSITIVE DRUG RESULT BY HEALTH INSURANCE STATUS
Adult Female Arrestees, San Diego Region, 2002

	Has Health Coverage	Does Not Have Health Coverage
Any Drug	69%	75%
Marijuana	33%	34%
Cocaine	22%	21%
Heroin	7%	5%
Methamphetamine	30%	44%
Multiple Drugs	30%	34%
TOTAL	166	178

NOTE: Cases with missing information are not included.

Criminal History

Males with a criminal history, including those who reported having a previous adult arrest or previously serving time, were significantly more likely to test positive for any illicit drug than those without a criminal history. In fact, male arrestees who reported a previous arrest were about twice as likely as those without a previous arrest to test positive for cocaine, heroin, methamphetamine, and multiple drugs (Table 3.20).

Table 3.20
POSITIVE DRUG RESULT BY ARREST STATUS
Adult Male Arrestees, San Diego Region, 2002

	Has Been Arrested	Never Been Arrested
Any Drug	69%	52%
Marijuana	38%	34%
Cocaine	13%	6%
Heroin	6%	3%
Methamphetamine	37%	20%
Multiple Drugs	28%	12%
TOTAL	608	140

NOTE: Cases with missing information are not included.

Similar to the men, women who had a previous arrest were significantly more likely to test positive for any illicit drug (82%) than those without a previous adult arrest (50%) (Table 3.21). Compared to women who had never been arrested, women with a previous arrest were over twice as likely to test positive for multiple drugs (17% versus 39%, respectively), two and one-half times as likely to test positive for cocaine (10% versus 26%), and four times as likely to test positive for heroin (2% versus 8%).

Table 3.21
POSITIVE DRUG RESULT BY ARREST STATUS
Adult Female Arrestees, San Diego Region, 2002

	Has Been Arrested	Never Been Arrested
Any Drug	82%	50%
Marijuana	36%	28%
Cocaine	26%	10%
Heroin	8%	2%
Methamphetamine	42%	26%
Multiple Drugs	39%	17%
TOTAL	233	111

NOTE: Cases with missing information are not included.

Men who had spent at least 24 hours in a jail, prison, juvenile detention facility, or boot camp prior to their current arrest were significantly more likely to test positive for any illicit drug (72%) than those without such a history (47%) (Table 3.22). Compared to arrestees who had never served time, those who had reported serving time were almost twice as likely to test positive for cocaine (7% versus 13%, respectively) and methamphetamine (20% and 38%), more than twice as likely to test positive for multiple drugs (12% versus 29%), and three times as likely to test positive for heroin (2% versus 6%).

Table 3.22
POSITIVE DRUG RESULT BY EVER SERVED TIME
Adult Male Arrestees, San Diego Region, 2002

	Has Served Time	Never Served Time
Any Drug	72%	47%
Marijuana	40%	27%
Cocaine	13%	7%
Heroin	6%	2%
Methamphetamine	38%	20%
Multiple Drugs	29%	12%
TOTAL	580	169

Again, results for the women were similar to the men, with those reporting having served time being significantly more likely to test positive for any illicit drug (84%) than those not reporting such a criminal history (53%) (Table 3.23). The rates for testing positive for marijuana were about the same, but women who had served time were more than twice as likely to test positive for cocaine (27%) and heroin (8%) than women who have not served time (12% and 3%, respectively). Forty-four percent (44%) of female arrestees who served time tested positive for methamphetamine, compared to just one-quarter (26%) of female arrestees who did not serve time.

Table 3.23
POSITIVE DRUG RESULT BY EVER SERVED TIME
Adult Female Arrestees, San Diego Region, 2002

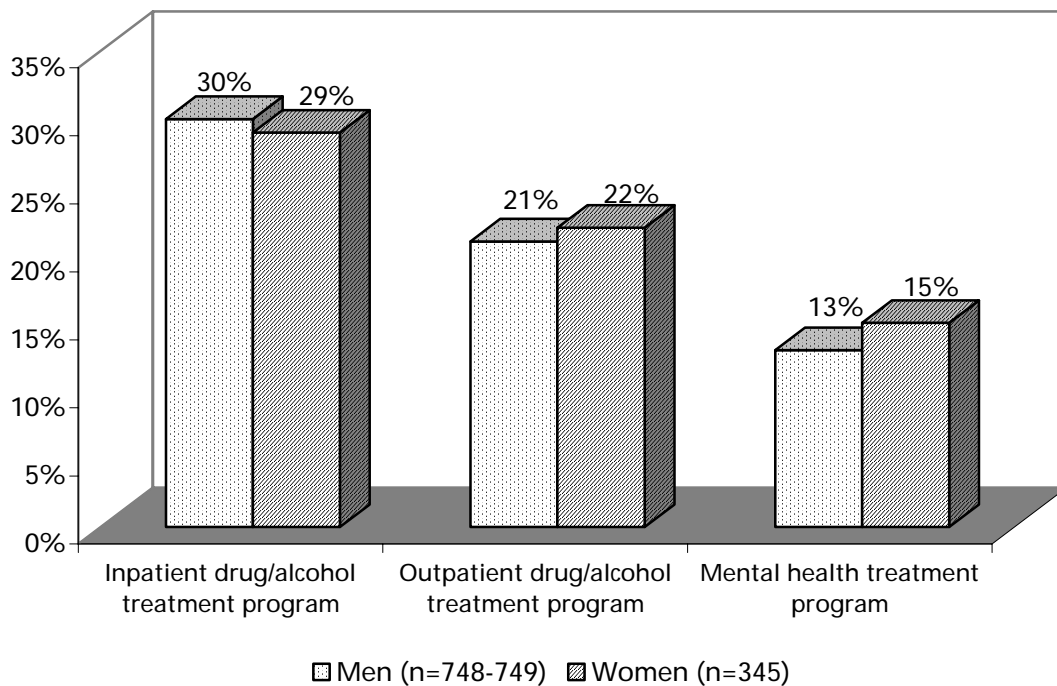
	Has Served Time	Never Served Time
Any Drug	84%	53%
Marijuana	34%	32%
Cocaine	27%	12%
Heroin	8%	3%
Methamphetamine	44%	26%
Multiple Drugs	38%	22%
TOTAL	211	134

TREATMENT EXPERIENCE

Gender

Male arrestees were just as likely as female arrestees to report ever being in an inpatient drug or alcohol treatment program, an outpatient drug or alcohol treatment program, or a mental health treatment program (not concerning drug or alcohol use) (Figure 3.10). Almost one-third of each (30% of men and 29% of women) reported ever being in an inpatient or residential drug or alcohol treatment program, including detox, rehab, a therapeutic community, or a hospital. About one-fifth (21% of men and 22% of women) reported ever being in an outpatient drug or alcohol treatment program, not including meetings like Narcotics Anonymous (NA) or Alcoholics Anonymous (AA). Men (38%) were equally as likely as women (37%) to have had either or both of these types of drug or alcohol treatment (not shown). More than one in ten (13% of men and 15% of women) reported staying at least overnight specifically for mental health treatment at a psychiatric unit of a hospital or other facility.

Figure 3.10
TREATMENT EXPERIENCE BY GENDER
Adult Arrestees, San Diego Region, 2002



NOTE: Cases with missing information are not included.

Age

Older adults were significantly more likely than younger adults to report ever being in an inpatient drug or alcohol treatment program or a mental health treatment program (Table 3.24). In particular, compared to adults 25 years old and under, those age 31 and over were twice as likely to report having been in an inpatient program (18% versus 37%, respectively) or a mental health treatment program (9% versus 18%). Older adults were slightly more likely to report ever having been in an outpatient drug or alcohol treatment program.

Table 3.24
TREATMENT EXPERIENCE BY AGE
Adult Arrestees, San Diego Region, 2002

	25 and Under	26 to 30	31 and Over
Inpatient treatment program	18%	29%	37%
Outpatient treatment program	19%	21%	23%
Mental health treatment program	9%	10%	18%
TOTAL	375	162-163	555-556

NOTE: Cases with missing information are not included.

Ethnicity

There were significant differences between ethnic groups in their reporting of treatment experiences. White (39%) and Black (38%) arrestees were more likely to report ever being in an inpatient drug or alcohol treatment program compared to Hispanic arrestees (13%) and those of other ethnicities (22%) (Table 3.25). White (18%) and Black (17%) arrestees were also more likely to report ever being in mental health treatment, not for drug or alcohol use, than the other ethnic groups (5% Hispanic and 10% other ethnicities). Hispanic arrestees were the least likely to report ever being in an outpatient drug or alcohol treatment program (11% compared to between 22% and 28%). Comparing ADAM participants to overall San Diego regional treatment admission figures (in parentheses), White (52%) and Hispanic (26%) arrestees are not receiving these services as much as their counterparts in the county as a whole, while Black arrestees (14%) and arrestees of "other" ethnicities (7%) are more likely to get treatment than their countywide counterparts (not shown).

Table 3.25
TREATMENT EXPERIENCE BY ETHNICITY
Adult Arrestees, San Diego Region, 2002

	White	Black	Hispanic	Other
Inpatient treatment program	39%	38%	13%	22%
Outpatient treatment program	28%	22%	11%	22%
Mental health treatment program	18%	17%	5%	10%
TOTAL	466-467	218	349-350	59

NOTE: Cases with missing information are not included.

Drug Use

It stands to reason that adults who reported ever being in an inpatient drug or alcohol treatment program were significantly more likely to test positive for any illicit drug (80%) than arrestees who did not report receiving such treatment (63%) (Table 3.26). This difference was especially evident in positive tests for cocaine (22% versus 12%, respectively), heroin (8% versus 4%), and multiple drugs (35% versus 24%).

Table 3.26
POSITIVE DRUG RESULT BY EVER HAD INPATIENT TREATMENT
Adult Arrestees, San Diego Region, 2002

	Had Inpatient Treatment	Never Had Inpatient Treatment
Any Drug	80%	63%
Marijuana	37%	36%
Cocaine	22%	12%
Heroin	8%	4%
Methamphetamine	40%	33%
Multiple Drugs	35%	24%
TOTAL	325	768

NOTE: Cases with missing information are not included.

In addition, adults reporting having received outpatient drug or alcohol treatment were significantly more likely to test positive for any illicit drug (79%) than adults who reported not receiving this type of treatment (65%) (Table 3.27). This difference was the result of arrestees who had received treatment testing positive for cocaine (18%), heroin (10%), and methamphetamine (41%) at higher rates than arrestees who did not report receiving outpatient treatment (14%, 4%, and 33%, respectively).

Table 3.27
POSITIVE DRUG RESULT BY EVER HAD OUTPATIENT TREATMENT
Adult Arrestees, San Diego Region, 2002

	Had Outpatient Treatment	Never Had Outpatient Treatment
Any Drug	79%	65%
Marijuana	35%	36%
Cocaine	18%	14%
Heroin	10%	4%
Methamphetamine	41%	33%
Multiple Drugs	33%	26%
TOTAL	233	860

NOTE: Cases with missing information are not included.

Similar to the findings concerning ADAM participants who had received other types of treatment, arrestees who reported ever having stayed overnight for mental health treatment were significantly more likely to test positive for any illicit drug (77%) than arrestees who did not report receiving mental health treatment (67%) (Table 3.28). While their positive drug results for marijuana and methamphetamine were about the same, those who had mental health treatment were more likely to test positive for cocaine (24%), heroin (11%), and multiple drugs (32%) than those without such treatment (13%, 4%, and 27%, respectively).

Table 3.28
POSITIVE DRUG RESULT BY EVER HAD MENTAL HEALTH TREATMENT
Adult Arrestees, San Diego Region, 2002

	Had Mental Health Treatment	Never Had Mental Health Treatment
Any Drug	77%	67%
Marijuana	34%	36%
Cocaine	24%	13%
Heroin	11%	4%
Methamphetamine	33%	35%
Multiple Drugs	32%	27%
TOTAL	148	946

DRUG AND ALCOHOL DEPENDENCE

Women (41%) were slightly more likely than men (39%) to report heavy drug use (Table 3.29), defined by the National Household Survey on Drug Abuse (NHSDA) as 13 or more days of self-reported consumption of a drug (cocaine, heroin, marijuana, methamphetamine, or PCP) in a 30-day period during the year before the interview. Women (45%) were also a little more likely than men (41%) to be assessed at risk for drug dependence, which is an indication of need for treatment and is measured by a clinically-based dependency screen regarding drug use experiences during the prior year. The dependency screen includes six questions regarding the arrestees' drug use experiences during the previous year, including whether they:

- spent more time using drugs than they intended;
- neglected some of their usual responsibilities because of using drugs;
- wanted to cut down on their drug use;
- had someone they know object to their drug use;
- found themselves frequently thinking about using drugs; and
- used drugs to relieve feelings such as sadness, anger, or boredom.

On the other hand, men (50%) were more likely than women (35%) to be assessed as binge drinkers, defined by the NHSDA as the consumption of five or more drinks on at least one occasion in a month (Table 3.29). Again, this standard may be gender-biased because of the differences in the effects of alcohol between males and females. In addition, men were more likely to be rated as heavy drinkers (29%) than women (16%). Heavy drinking is defined in the NHSDA as the consumption of five or more drinks on five or more occasions in a month. Despite these differences, men (30%) were only slightly more likely than women (28%) to be assessed at risk for alcohol dependence, the same measure used to determine drug dependence risk but with alcohol substituted for drugs.

Table 3.29
HEAVY DRUG AND ALCOHOL USE BY GENDER, WEIGHTED
Adult Arrestees, San Diego Region, 2002

	Men	Women
Heavy Drug Use	39%	41%
At Risk for Drug Dependence	41%	45%
Binge Drinking	50%	35%
Heavy Drinking	29%	16%
At Risk for Alcohol Dependence	30%	28%
TOTAL	749	345

NOTE: Data are weighted.

SOURCE: U.S. Department of Justice

DRUG MARKET

Obtaining Drugs in the Past 30 Days

How ADAM participants obtained drugs, either through purchasing them with cash or by getting them without cash, and including the frequency, location, and method, is important information for law enforcement. Arrestees were most likely to report obtaining marijuana (43%) in the past 30 days, followed by methamphetamine (31%), crack cocaine (10%), powder cocaine (6%), and heroin (4%) (Table 3.30). Of those who obtained the drug, about three-quarters paid cash for heroin (77%) and crack cocaine (74%), while most who obtained marijuana (86%) and methamphetamine (81%) received the drug without paying cash for it. These differences could be related to the cost of the drug, the financial status of the users, as well as the situations in which the drugs are used.

Table 3.30
OBTAINING DRUGS IN THE PAST 30 DAYS
Adult Arrestees, San Diego Region, 2002

	Obtained in the Past 30 Days	Paid Cash in the Past 30 Days¹	Obtained Without Paying Cash in the Past 30 Days¹
Marijuana	43%	39%	86%
Methamphetamine	31%	56%	81%
Crack Cocaine	10%	74%	61%
Powder Cocaine	6%	44%	68%
Heroin	4%	77%	50%
TOTAL	1,087-1,088	48-464	48-464

NOTE: Cases with missing information are not included.

¹*Percentages are based on those who obtained in the 30 days prior to the interview.*

The majority of arrestees used the drug that they obtained in the past 30 days. However, almost one-fifth (19%) of arrestees who obtained powder cocaine did not use it. This could be attributed in part to some arrestees who are selling the drug instead or turning it into crack cocaine to use. On the other hand, there were also a handful of arrestees who used a particular drug but did not obtain it in the past 30 days, which occurred most often with heroin users (6%) (not shown). This can be explained in part by some arrestees obtaining the drug before 30 days prior to the interview but having used it more recently.

Cash Transactions

Of those who bought drugs, most of the arrestees (between 89% and 97%) paid cash only the last time that they made a purchase, as opposed to paying cash and something else. Of those who paid a combination of cash and something else, other things that were exchanged along with the cash included property, labor, other drugs, or sex. Those purchasing heroin were the most likely to pay with cash *and* something else (11%). Most of the arrestees (between 80% and 86%) bought the drug directly themselves, as opposed to giving the money to someone else to buy it for them. Of those who gave someone else the cash to buy drugs for them, most were not working with a dealer (not shown).

Of those who did buy from a dealer, either directly or indirectly, heroin users were the most likely to report that the last person they bought from was their regular source (69%) (Table 3.31). Marijuana users were the most likely to report that the person that they last bought from was an occasional source for the drug (38%). Marijuana may be one of the drugs for which there are multiple sources available and users can go to one of many suppliers each time they want to purchase the drug. Those who bought crack cocaine in the past 30 days were the most likely to report buying from a new source (31%) the last time they purchased crack cocaine. This statistic may reflect a high turnover in people who sell crack cocaine such that users have to frequently seek out new dealers.

Table 3.31
SOURCE OF BUYING DRUGS DURING LAST DRUG BUY
Adult Arrestees, San Diego Region, 2002

	Heroin	Metham- phetamine	Powder Cocaine	Marijuana	Crack Cocaine
Regular source	69%	51%	46%	43%	39%
Occasional source	16%	24%	31%	38%	31%
New source	16%	24%	23%	19%	31%
TOTAL	32	160	26	161	72

NOTE: Cases with missing information are not included. Percentages may not equal 100 due to rounding.

Data on different methods of contacting drug dealers are important in helping decrease drug dealing because some methods are harder to combat (e.g., already being with the person in a social situation or at work) than others (e.g., going to a house or apartment, which can be monitored if reported to police as suspicious activity by neighbors). Most arrestees who bought a drug in the past 30 days called their contact directly themselves the last time they purchased it (from 35% of marijuana purchasers to 59% of heroin purchasers), with the exception of crack cocaine, in which 42 percent of these arrestees approached the person in public, such as on the street, in a store, or at a park (Table 3.32). About one-fifth of arrestees who bought crack cocaine (18%), powder cocaine (19%), methamphetamine (19%), and marijuana (20%) first went to a house or apartment to contact their dealer.

Table 3.32
HOW CONTACTED THE DEALER DURING LAST DRUG BUY
Adult Arrestees, San Diego Region, 2002

	Heroin	Powder Cocaine	Metham- phetamine	Marijuana	Crack Cocaine
Called the dealer directly	59%	46%	41%	35%	20%
Approached the dealer in public	16%	8%	19%	24%	42%
Went to a house or apartment	9%	19%	19%	20%	18%
Paged the dealer on a beeper	9%	15%	10%	7%	8%
Was with the dealer already	6%	12%	9%	12%	8%
Other ¹	0%	0%	3%	2%	3%
TOTAL	32	26	161	161	71

NOTE: Cases with missing information are not included. Percentages may not equal 100 due to rounding.

¹ "Other" includes the dealer initiating the contact with the arrestee and the arrestee living with the dealer.

A house or apartment was the most common place where arrestees made their last drug purchase for each type of drug (Table 3.33). Over one-third (36%) of adults who bought crack cocaine and about one-quarter who bought heroin (25%) and powder cocaine (27%) bought the drug on a street, alley, or road.

Table 3.33
WHERE OBTAINED DRUGS DURING LAST DRUG BUY
Adult Arrestees, San Diego Region, 2002

	Metham- phetamine	Marijuana	Crack Cocaine	Heroin	Powder Cocaine
House or apartment	60%	56%	40%	38%	46%
Street, alley, or road	13%	19%	36%	25%	27%
Other outdoor area	11%	15%	10%	19%	12%
Public building	11%	7%	11%	13%	12%
Other	4%	2%	3%	6%	4%
TOTAL	163	162	72	32	26

NOTE: Cases with missing information are not included. Percentages may not equal 100 due to rounding.

Arrestees were asked if their last drug buy was in the neighborhood where they lived or outside their neighborhood. Those who bought heroin were the most likely to report buying it in the neighborhood where they lived (59%), while purchasers of powder cocaine were the least likely to travel outside their neighborhood to buy the drug (38%) (not shown).

Adults reported buying crack cocaine an average of more than two times that day the last time they bought crack cocaine in the past 30 days (Table 3.34). Those who bought other drugs tended to buy only once in a day. Users of heroin and crack cocaine reported buying on more days in the past week than users of methamphetamine, powder cocaine, and marijuana. Those who bought heroin reported buying it on an average of 19.6 occasions in the past 30 days, compared to between 4.6 times for marijuana and 11.4 times for crack cocaine. The high frequency of buying heroin per month can explain why heroin purchasers were the most likely to obtain the drug by exchanging cash *and* something else as mentioned earlier, since it might be hard to gather enough cash for each purchase in such a short amount of time. Buyers of crack cocaine bought from more people, on average, in the past 30 days (2.7) compared to buyers of other drugs (from 1.3 people for powder cocaine to 2.3 people for methamphetamine).

Table 3.34
TIMES BOUGHT DRUG AND NUMBER OF PEOPLE BOUGHT FROM
Adult Arrestees, San Diego Region, 2002

	Times Bought on Last Day	Times Bought in Past 7 Days	Times Bought in Past 30 Days	Number of People Bought from in 30 Days
Crack cocaine	2.4	3.4	11.4	2.7
Heroin	1.5	4.4	19.6	2.1
Methamphetamine	1.2	2.7	10.2	2.3
Powder cocaine	1.2	1.6	5.4	1.3
Marijuana	1.1	1.2	4.6	1.6
TOTAL	28-185	28-186	28-180	28-181

NOTE: Cases with missing information are not included.

In the past 30 days, buyers of methamphetamine had the hardest time getting the drug when they had the cash and tried to buy it (35%) compared to buyers of other drugs (between 14% for powder cocaine and 31% for marijuana) (not shown). Of those who could not buy the drug when they were prepared and wanted to, many reported that the reason was that no dealers were available or the dealers did not have any (Table 3.35). Very few arrestees reported that the dealers did not have the quality they wanted or that police activity kept them from the dealers. Because of the small number of cases, heroin and powder cocaine are not shown in this table.

Table 3.35
WHY IT WAS HARD TO BUY DRUG
Adult Arrestees, San Diego Region, 2002

	Metham- phetamine	Marijuana	Crack Cocaine
No dealers were available	42%	39%	46%
Dealers did not have any	37%	44%	38%
Dealers did not have the quality you wanted	11%	9%	4%
Police activity kept you from the dealers	11%	5%	8%
Other	0%	4%	4%
TOTAL	65	57	26

NOTE: Cases with missing information are not included. Percentages may not equal 100 due to rounding.

Non-Cash Transactions

The majority of arrestees who obtained a drug without paying any cash for it in the past 30 days last received the drug as a gift, from 69 percent of those who received crack cocaine to 86 percent of those who received marijuana. Others obtained the drug on credit by promising to pay cash for it later (from 2% for marijuana and powder cocaine to 17% for heroin and crack cocaine), got it fronted to sell (from 2% for powder cocaine and crack cocaine to 4% for heroin and methamphetamine), or obtained the drug through other means, such as trading other drugs, trading property, finding the drug, transporting drugs, stealing the drug, trading labor, trading sex, or harvesting/making the drug (not shown).

Of those who obtained a drug in the past 30 days without paying cash for it, the most common response for all drugs for how the drug was obtained was that the buyer was already with the person who had the drug (at work or in a social setting), with powder cocaine users as the most likely to report this (64%) (Table 3.36). This is in stark contrast to those who purchased drugs with cash, who were the least likely to report this method (Table 3.32). Methamphetamine users were slightly more likely than other drug users to call the person who gave them the drug directly (17%) the last time they obtained methamphetamine without cash.

Table 3.36
HOW CONTACTED THE DEALER DURING THE LAST TIME OBTAINED DRUG WITHOUT CASH
Adult Arrestees, San Diego Region, 2002

	Powder Cocaine	Marijuana	Heroin	Crack Cocaine	Metham- phetamine
Was with the person already	64%	53%	50%	45%	41%
Went to a house or apartment	14%	13%	8%	19%	17%
Approached the person in public	12%	15%	13%	15%	13%
Called the person directly	5%	12%	13%	10%	17%
Paged the person on a beeper	0%	2%	8%	5%	1%
Other	5%	6%	8%	6%	11%
TOTAL	42	387	24	62	264

NOTE: Cases with missing information are not included. Percentages may not equal 100 due to rounding.

When they did not have to pay cash for the drug, arrestees reported that they obtained the drug, on average, about one time on the most recent day they got it (Table 3.37). Arrestees who received methamphetamine (2.4) and crack cocaine (2.1) obtained it on more days in the past week, on average, than those who received other drugs without having to pay cash. In the past 30 days, powder cocaine users received the drug without paying cash for it on the fewest number of days (3.0), on average, while methamphetamine users received the drug without cash on the most days (8.0) in the past month.

Table 3.37
NUMBER OF TIMES OBTAINED DRUG WITHOUT PAYING CASH
Adult Arrestees, San Diego Region, 2002

	Times Obtained on Same Day	Times Obtained in Past 7 Days	Times Obtained in Past 30 Days
Crack cocaine	1.4	2.1	6.8
Methamphetamine	1.3	2.4	8.0
Powder cocaine	1.3	0.8	3.0
Marijuana	1.2	1.5	5.4
Heroin	1.1	1.3	4.9
TOTAL	24-394	24-396	24-395

NOTE: Cases with missing information are not included.

SUMMARY

Demographically, the ADAM (Arrestee Drug Abuse Monitoring) sample was representative of all adults who were arrested and booked in San Diego in 2002. Two-thirds of the men and almost three-quarters of the women who were interviewed and provided urine specimens tested positive for an illicit drug. In general, the 2002 rates of positive drug tests for women were slightly higher than the rates in the previous four years, while the rates for men remained relatively stable. The self-reported use of LSD has decreased in the past three years, while Ecstasy use has increased. Older women and younger men were more likely to test positive for any illicit drug, while White and Black arrestees of both genders were more likely to test positive than other ethnic groups. Those who were not working, did not have health insurance, or had a criminal history were also more likely to test positive than others. Respondents were likely to pay cash for crack cocaine and heroin during their last drug acquisition in the past 30 days, while marijuana and methamphetamine was mostly acquired without cash. Heroin users were more likely to have a regular source for buying the drug than users of other drugs. Methamphetamine was the least likely drug to be purchased in an outdoor setting, including on the street. Crack cocaine was typically purchased on multiple occasions in one day, while heroin was purchased on a greater number of days in the past 30 than other drugs.

CHAPTER 4

COMPARISON WITH PHOENIX

CHAPTER 4

COMPARISON WITH PHOENIX

INTRODUCTION

Comparisons were made between adult males from the San Diego ADAM site and the Phoenix (Maricopa County) ADAM site to determine what similarities and differences these two sites showed in their arrestee characteristics and drug use. Phoenix was chosen as a comparison city because of its similarity to San Diego in terms of its location in the Southwestern area of the country, its similar population size, and its relatively similar ethnic distributions (Table 4.1). There was a smaller proportion of Whites in San Diego (49%) than in Phoenix (61%) in 2000. The higher percentage of people who were of “other” ethnicities in San Diego was mostly due to the higher Asian population in San Diego (13%) compared to Phoenix (2%). In addition, the distribution of ages and the percentages of adults in both counties who had at least a high school education (83%) and who had a job (65%) were the same (not shown). Comparisons between females from the two sites are not presented but these data produced similar results as for the males.

Table 4.1
ETHNICITY BY SITE
San Diego and Phoenix Cities, 2000

	San Diego	Phoenix
White	49%	61%
Hispanic	25%	29%
Other	18%	5%
Black	8%	5%
TOTAL	1,223,400	938,610

SOURCE: U.S. Census

A total of 2,152 male arrestees were approached to do the ADAM interview in Phoenix, with 1,853 (86%) agreeing. Of these, 1,667 (90%) provided an adequate urine sample for testing. These rates are slightly lower than those for San Diego adult males, with 783 of the 894 approached agreeing to be interviewed (88%) and 749 (96%) of them providing an adequate urine sample (not shown). Only information from arrestees who provided urine samples are included in the following analyses.

AGE AND ETHNICITY

San Diego and Phoenix male arrestees in 2002 were similar in age, but San Diego males were less likely to be White (40%) and more likely to be Hispanic (37%) than their Phoenix counterparts (58% and 24%, respectively) (Table 4.2).

Table 4.2
AGE AND ETHNICITY BY SITE
Adult Male Arrestees, San Diego and Phoenix Regions, 2002

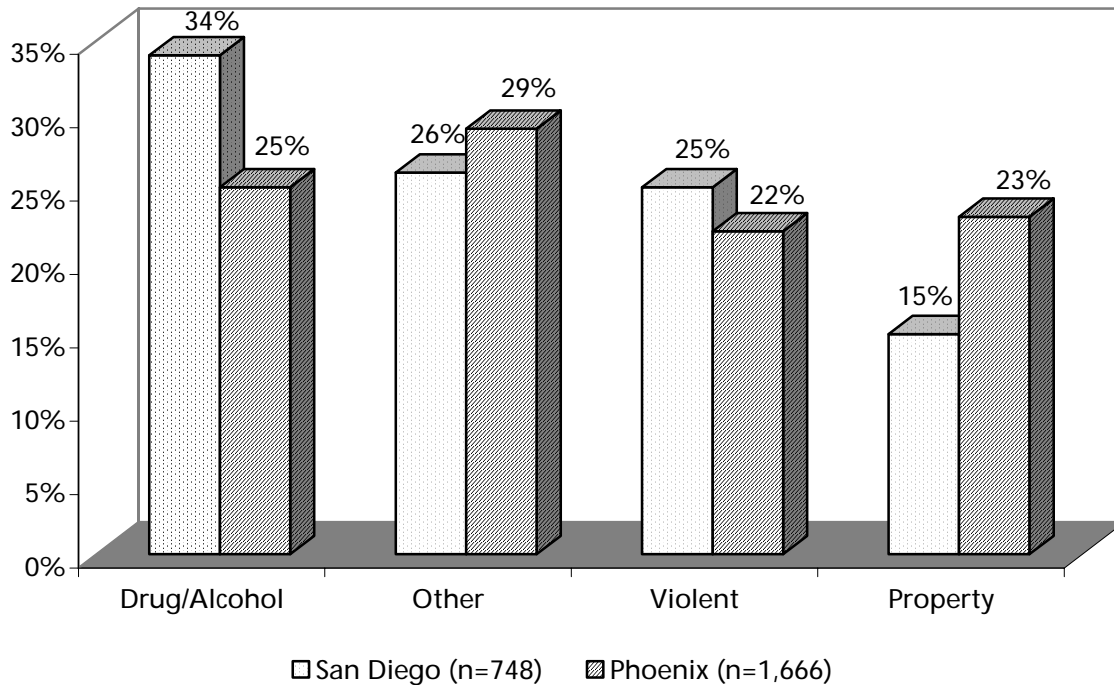
	San Diego	Phoenix
Age		
25 and under	36%	38%
26 to 30	14%	15%
31 and over	50%	47%
TOTAL	749	1,667
Ethnicity		
White	40%	58%
Black	18%	12%
Hispanic	37%	24%
Other	5%	6%
TOTAL	749	1,660

NOTE: Cases with missing information are not included.

ARREST CHARGE

San Diego males were more likely to have a drug or alcohol offense as their highest charge (34%) than Phoenix males (25%) (Figure 4.1). On the other hand, property offenses were more prevalent among Phoenix (23%) than San Diego (15%) male arrestees. The rates of being charged with either an “other” or violent offense were approximately the same for the two sites.

Figure 4.1
HIGHEST CHARGE AT ARREST BY SITE
Adult Male Arrestees, San Diego and Phoenix Regions, 2002



NOTE: Percentages may not equal 100 due to rounding.

OTHER CHARACTERISTICS

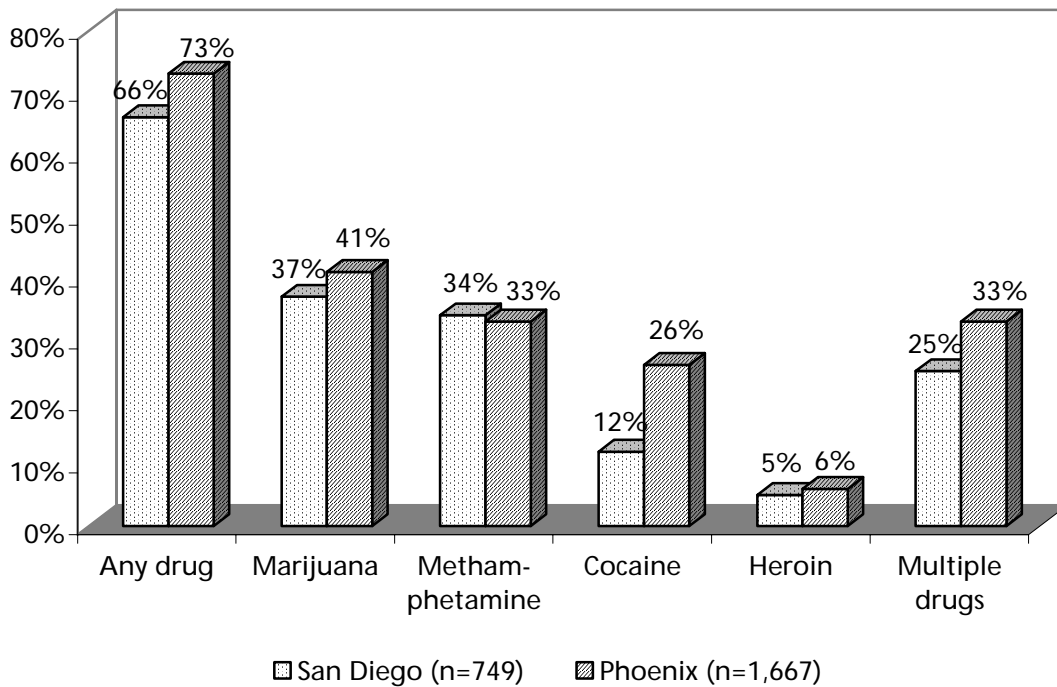
There were no differences in education level or current job status between San Diego and Phoenix arrestees in 2002. In addition, there were no differences in self-reported criminal history (ever been previously arrested or ever served more than 24 hours in jail) between the two sites. San Diego males were slightly less likely to have health insurance (35%) than those in Phoenix (40%) (not shown).

POSITIVE DRUG RESULTS

Phoenix males (73%) were more likely than San Diego males (66%) to test positive for any drug, which is reflected in the higher Phoenix rates of positive tests for marijuana (41%) and cocaine (26%) compared to San Diego (37% and 12%, respectively) (Figure 4.2). Arrestees at the two sites tested for methamphetamine and heroin at about the same rates. The higher rate of drug charges and the lower rate in testing positive for any drug for San Diego arrestees may be a sign of better enforcement of drug laws in San Diego County.

Similar proportions of arrestees reported injecting drugs with a needle in the past year (of those who have used drugs) for both sites (17% San Diego and 16% Phoenix) (not shown).

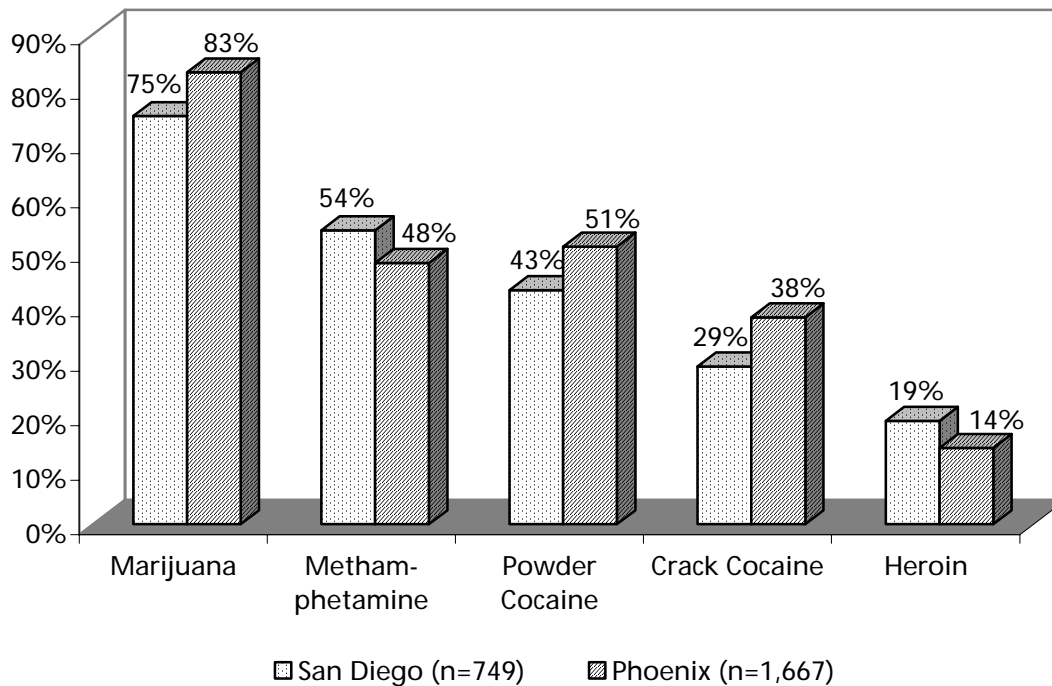
Figure 4.2
POSITIVE DRUG RESULTS BY SITE
Adult Male Arrestees, San Diego and Phoenix Regions, 2002



SELF-REPORTED DRUG USE

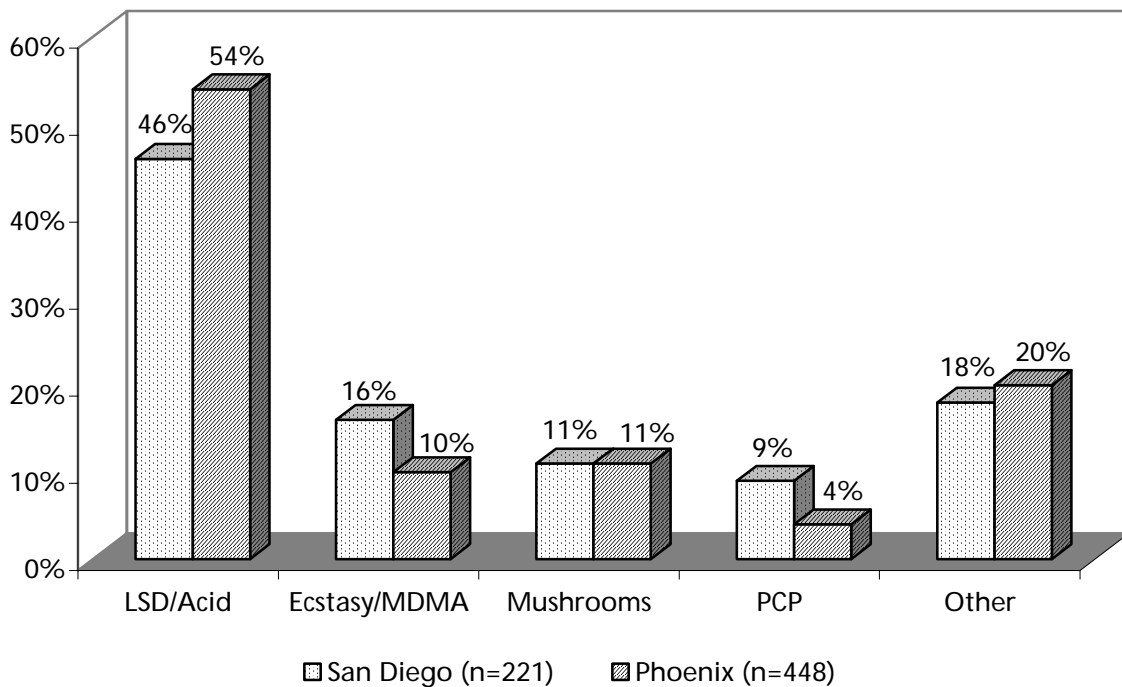
Although their test results were similar for the two drugs, San Diego male arrestees were slightly more likely than Phoenix male arrestees to report ever trying methamphetamine (54% versus 48%, respectively) and heroin (19% versus 14%) (Figure 4.3). Consistent with their positive drug tests, San Diego males were less likely than Phoenix males to report ever trying marijuana (75% versus 83%, respectively), powder cocaine (43% versus 51%), and crack cocaine (29% versus 38%).

Figure 4.3
EVER TRIED A SUBSTANCE BY SITE
Adult Male Arrestees, San Diego and Phoenix Regions, 2002



San Diego males were slightly more likely to report ever using any other drug (32%) than Phoenix males (29%) (not shown). Of those who provided a response, the type of drug that the arrestees reported using the most was LSD (also called acid) for both sites, with a higher proportion reporting this drug from Phoenix (54%) than San Diego (46%) (Figure 4.4). San Diego males were slightly more likely than Phoenix males to report using Ecstasy (also called MDMA) and PCP. Phoenix arrestees were slightly more likely to report illegal use of a variety of other drugs, such as Percocet, Vicodin, Xanax, sherm (a marijuana or tobacco cigarette laced with PCP or dipped in another substance, such as embalming fluid), codeine, opium, speed (not including methamphetamine), and Valium (not shown).

Figure 4.4
OTHER DRUG USED MOST OFTEN BY SITE
Adult Male Arrestees, San Diego and Phoenix Regions, 2002



NOTE: Percentages may not equal 100 due to rounding.

DRUG AND ALCOHOL DEPENDENCE

San Diego and Phoenix male arrestees both reported binge drinking, heavy drinking, and risk for alcohol dependence at levels similar to the national medians of all ADAM sites for 2002 (Table 4.3). The two sites were also similar in their rates of heavy drug use and risk for drug dependence, which were slightly above the national medians.

Table 4.3
HEAVY DRUG AND ALCOHOL USE BY SITE, WEIGHTED
Adult Male Arrestees, San Diego and Phoenix Regions, 2002

	San Diego	Phoenix	National Median
Heavy drug use	39%	41%	37%
At risk for drug dependence	41%	42%	38%
Binge drinking	50%	49%	51%
Heavy drinking	29%	26%	29%
At risk for alcohol dependence	30%	27%	30%

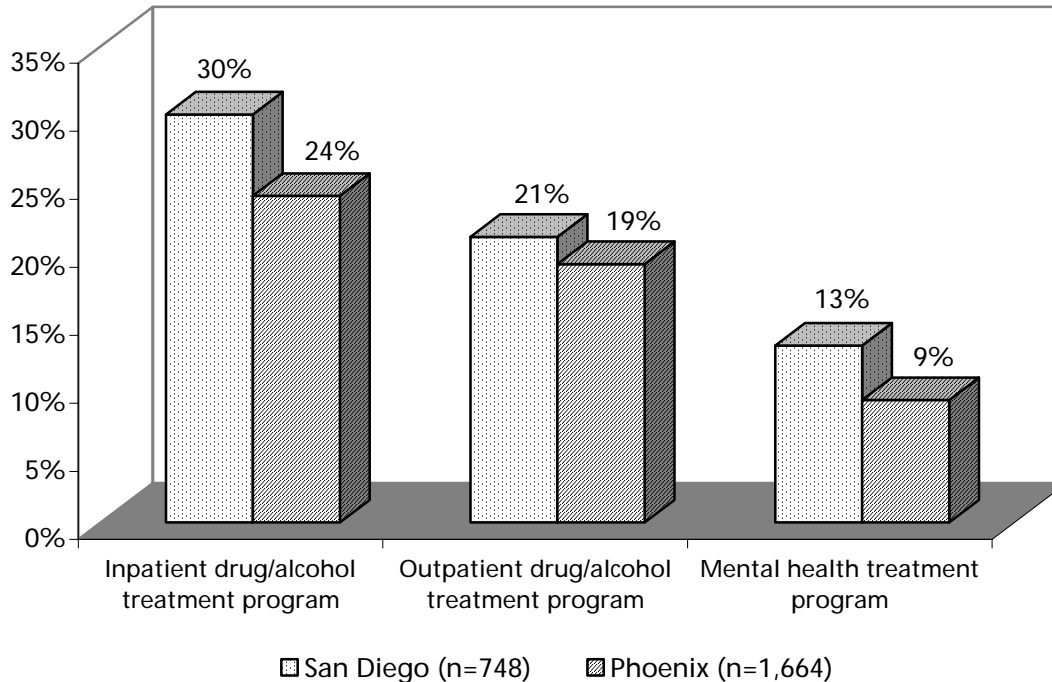
NOTE: Data are weighted.

SOURCE: National Institute of Justice

TREATMENT EXPERIENCE

San Diego males were more likely than Phoenix males to report ever receiving treatment, including inpatient drug or alcohol treatment (30% versus 24%, respectively), outpatient drug or alcohol treatment (21% versus 19%), and mental health treatment (13% versus 9%) (Figure 4.5).

Figure 4.5
TREATMENT EXPERIENCE BY SITE
Adult Male Arrestees, San Diego and Phoenix Regions, 2002



These differences may reflect better availability or more treatment options for those seeking treatment in San Diego. The difference in drug treatment might also be a consequence of California's recently enacted law, the Substance Abuse and Crime Prevention Act of 2000 (also known as Proposition 36), that allows first- and second-time, non-violent, simple drug possession offenders the opportunity to receive substance abuse treatment instead of incarceration. Arizona passed a similar law (Proposition 200, also called the Drug Medicalization, Prevention, and Control Act) in November 1996. Although it was temporarily eliminated soon after by a bill passed in April 1997, it was reinstated in their 1998 election. Similar to California's law, this law required that non-violent convicts of drug possession or use undergo mandatory drug treatment as part of their probation instead of incarceration. However, it was found that between one-quarter and one-third of the Arizona offenders mandated into treatment did not comply. Therefore, Arizona's Proposition 200 passed in 2002, which permits judges to use the threat of jail to encourage participation in court-ordered treatment and to incarcerate those who refuse to participate.

SUMMARY

San Diego and Phoenix ADAM male arrestees were similar in age, educational background, job status, and criminal history. There were fewer people who were White and more who were Hispanic in San Diego compared to their Phoenix counterparts. San Diego ADAM arrestees were more likely to be charged with a drug or alcohol offense and more likely to report receiving drug or alcohol treatment in their lifetime, although the rates of drug or alcohol dependence were about the same between the two sites. However, Phoenix arrestees were more likely to test positive for cocaine and slightly more likely to test positive for marijuana, which made them more likely to test positive for any illicit drug, as well as for multiple drugs.

CHAPTER 5
METHAMPHETAMINE ADDENDUM

CHAPTER 5

METHAMPHETAMINE ADDENDUM

INTRODUCTION

In addition to answering the ADAM questionnaire, adults who reported using methamphetamine (also called “meth”) in the past 30 days were asked to complete an additional questionnaire entirely about their experiences with meth. Thirty-one percent (31%; 332) of the adults in 2002 reported using meth in the past 30 days, and 188 of them (57%) agreed to complete the meth addendum (not shown). Of the 188 adults interviewed, 131 (70%) were men. This percentage was similar to the proportion of all ADAM men who reported 30-day methamphetamine use (69%).

METHAMPHETAMINE USER VERSUS NON-USER CHARACTERISTICS

Some adults who used meth in the past 30 days did not complete a meth addendum. However, adults who reported using meth in the past 30 days were included in the “meth users” group, regardless of whether they completed a meth addendum. “Non-users” are those who did not report using meth in the past 30 days. In addition, the following comparisons between meth users and non-users include only those adults who completed the initial ADAM interview and provided urine samples.

Age and Ethnicity

There were no significant differences in age between meth users and non-users (not shown). Meth users were significantly more likely to be White (55%) than non-users (37%) (Table 5.1). Black arrestees were far less likely to report using meth in the past 30 days (8%), compared to White and Hispanic arrestees.

Table 5.1
ETHNICITY OF METHAMPHETAMINE USERS VERSUS NON-USERS
Adult Arrestees, San Diego Region, 2002

	Meth User	Non-User
White	55%	37%
Hispanic	29%	34%
Black	8%	25%
Other	8%	5%
TOTAL	332	752

NOTE: Percentages may not equal 100 due to rounding.

Arrest Charge

Meth users were significantly *more* likely to be arrested on drug or alcohol charges (such as driving under the influence, being under the influence of a controlled substance, or possessing a controlled substance) (43%) as their highest charge than non-users (32%) (Table 5.2). In addition, meth users were significantly *less* likely to have a violent offense (such as simple assault, aggravated assault, robbery, and threats) (16%) as their highest charge than non-users (26%).

Table 5.2
HIGHEST CHARGE AT ARREST FOR METHAMPHETAMINE USERS VERSUS NON-USERS
Adult Arrestees, San Diego Region, 2002

	Meth User	Non-User
Drug/Alcohol	43%	32%
Property	21%	18%
Other	20%	24%
Violent	16%	26%
TOTAL	331	751

NOTE: Cases with missing information are not included.

Location of Arrest

Meth users were significantly *less* likely to be arrested in the Central major statistical area (MSA) of San Diego County (38%) than non-users (47%) (Table 5.3). Meth users were *more* likely to be arrested in the East Suburban area (17%) than non-users (11%).

Although location of arrest and location of residence were highly correlated, the differences between meth users and non-users in terms of their location of residence were not statistically significant.

Table 5.3
ARREST LOCATION OF METHAMPHETAMINE USERS VERSUS NON-USERS
Adult Arrestees, San Diego Region, 2002

	Meth User	Non-User
Central	38%	47%
East Suburban	17%	11%
South Suburban	16%	13%
North City	10%	11%
North County East	10%	8%
North County West	7%	9%
East County	1%	1%
Out of County	1%	0%
TOTAL	314	706

NOTE: Cases with missing information are not included.

Criminal History

Meth users were significantly more likely to report having a prior arrest (not including any juvenile arrests) (88%) and having previously served time in a jail, prison, juvenile detention facility, or boot camp (87%) than non-users (72% and 65%, respectively) (Table 5.4). In fact, arrestees who tested positive for any illicit drug were more likely to report a criminal history than arrestees who tested negative (not shown).

Table 5.4
CRIMINAL HISTORY OF METHAMPHETAMINE USERS VERSUS NON-USERS
Adult Arrestees, San Diego Region, 2002

	Meth User	Non-User
Arrested (not including juvenile arrests)	88%	72%
Served at least 24 hours in jail (including juvenile time)	87%	65%
TOTAL	332	750-752

NOTE: Cases with missing information are not included.

Urinalysis Results

As expected, meth users were significantly more likely to test positive for meth (83%) compared to non-users (14%) (Table 5.5). Meth users also tested positive for any drug (94%) and for multiple drugs (44%) significantly more often than non-users (56% and 20%, respectively). This indicates that meth users make up a good portion of all arrestees who test positive for any drug and multiple drugs. In fact, over one-third (35%) of meth users tested positive for both meth and marijuana (not shown).

Table 5.5
POSITIVE URINALYSIS OF METHAMPHETAMINE USERS VERSUS NON-USERS
Adult Arrestees, San Diego Region, 2002

	Meth User	Non-User
Positive for meth	83%	14%
Positive for any drug	94%	56%
Positive for multiple drugs	44%	20%
TOTAL	332	752

REASONS FOR USING

The remaining analyses include the data for the 188 adults who completed a meth addendum and who provided a urine sample. The most common reason adults gave for first trying meth was because their friends or peers use (49%), followed by experimentation (26%) (Table 5.6). Women (14%) were more likely than men (2%) to report first trying meth to lose weight and to escape problems (14% versus 6%, respectively). Examples of responses in the “other” category included because they didn’t know any better, they were bored, because of emotional or mental problems, they wanted to be cool, it was the cheapest thing available, and it was around.

On average, adults started using about 12 years prior to the interview (i.e., in 1990), with start-up times ranging from 1967 to 2002. On average, men started using meth earlier (1989) than women (1991) (not shown).

Table 5.6
REASONS FOR FIRST TRYING METHAMPHETAMINE
Adult Methamphetamine Users, San Diego Region, 2002

	Men	Women	All Adults
Because friends/peers use	50%	47%	49%
To experiment	26%	25%	26%
Other	14%	0%	10%
To get high	10%	9%	10%
To get energy	8%	7%	8%
To escape problems	6%	14%	9%
To stay awake	6%	7%	6%
To replace another drug	6%	4%	5%
To lose weight	2%	14%	5%
TOTAL	131	57	188

NOTE: Percentages are based upon multiple responses.

At the end of each interview, adults are asked if they had any additional comments that they would like to share about meth. Some of the responses in 2002 included:

- "I hate it [meth]. I do it every day but I hate it. Basically, I'll make it simple for you: it's a bad drug. I'm addicted to it."
- "It's the devil's drug."
- "Don't do it. It's bad for your health."
- "Meth destroyed my life."
- "It messes you up. I'm 34 years old and look where I am. You don't realize you have a problem until you're here [in jail]. It's stupid. I need help."
- "Meth is the stupidest drug out there. A side effect is that it will make you crazy."
- "I would like to know how I can quit meth."
- "It is garbage, very bad. I'm lucky to have stayed alive this long."
- "No one wants to use drugs but if you feel helpless then it's a substitute for support. It gives you a pep talk. I don't like meth because I've seen too many people get out of hand on it."
- "It's the worst thing I ever did. It screwed up my life and my family. It turns good people into thieves and liars. I wish I'd never started [using] it."
- "I wish I never did it. It sucks. It has ruined my life."
- "If you haven't tried it, don't try it because it's addicting. It could mess up your life."

Yet, despite saying and feeling these things, many adults continued to use meth. As many mentioned in their open-ended comments, the most common reason adults reported for still using meth was because they were addicted (34%) (Table 5.7). About one-quarter (27%) continued to use meth to get high. More women (14%) than men (1%) continued to report using meth to lose weight. In addition, women (25%) were over twice as likely as men (10%) to report still using meth to escape problems. Examples of responses in the "other" category included because they were bored, because they were "stupid," for sexual enhancement, because of emotional or mental problems, it is all over the place, it helps them focus, and it "kills [their] pain of being alone."

Table 5.7
REASONS FOR STILL USING METHAMPHETAMINE
Adult Methamphetamine Users, San Diego Region, 2002

	Men	Women	All Adults
Addicted	34%	33%	34%
To get high	27%	25%	27%
Other	24%	12%	21%
To get energy	14%	14%	14%
Because friends/peers use	13%	14%	13%
To escape problems	10%	25%	14%
To stay awake	10%	4%	8%
To replace another drug	2%	2%	2%
To lose weight	1%	14%	5%
TOTAL	131	57	188

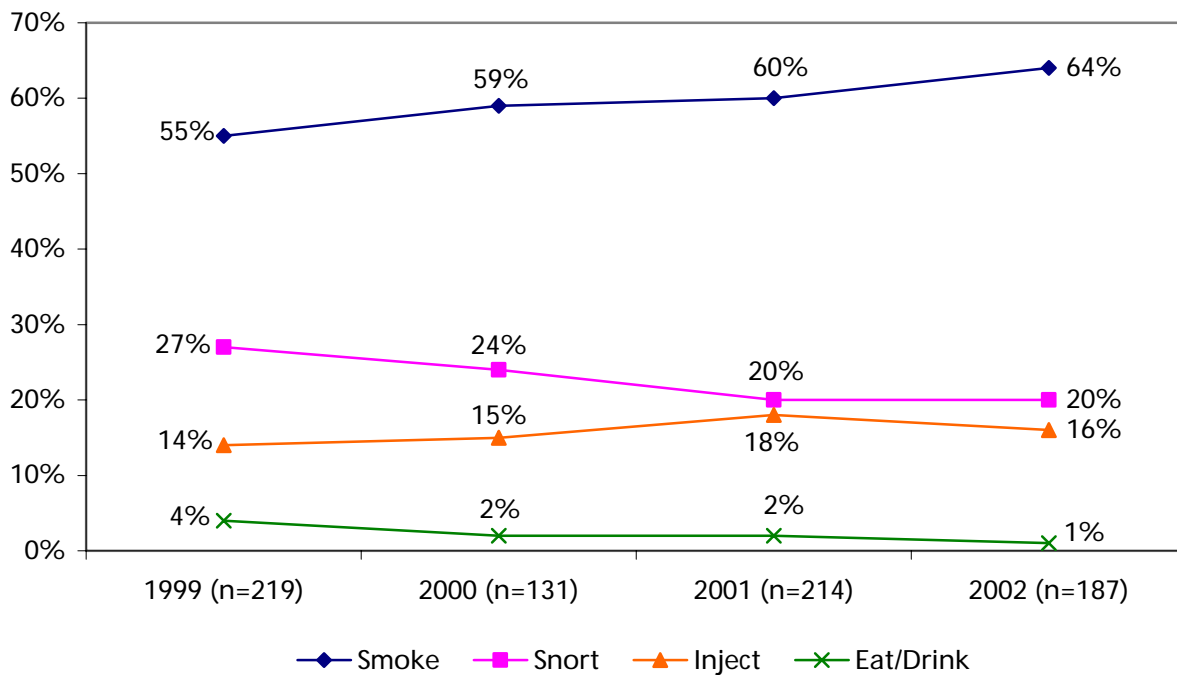
NOTE: Percentages are based upon multiple responses.

USAGE CHARACTERISTICS

Route

Smoking has become an increasingly popular mode of meth use in the past few years, rising from 55 percent in 1999 to 64 percent in 2002 (Figure 5.1). Snorting has declined as a method of using meth, from 27 percent in 1999 to 20 percent in 2002. Injecting is a method of administering meth that has remained low and relatively stable, with between 14 percent and 18 percent injecting in each comparison year.

Figure 5.1
ROUTE OF ADMINISTRATION
Adult Methamphetamine Users, San Diego Region, 1999 to 2002



NOTE: Percentages may not equal 100 due to rounding.

Frequency

On average, adults reported using almost one-third of a gram of meth each time they used, with men (0.4 gram) using slightly more than women (0.3 gram), on average (not shown). Adults used this amount about three times each day that they used, on about 14 days in the last month (Table 5.8).

In the previous month, adults used meth on about nine consecutive days, on average, and their longest break from using meth in the past month was about ten days, on average (Table 5.8). The most frequent reasons for taking a break from meth included not feeling dependent on the drug (24%), to avoid addiction (11%), and because they needed to sleep (11%) (not shown).

Table 5.8
FREQUENCY OF METHAMPHETAMINE USE
Adult Methamphetamine Users, San Diego Region, 2002

	Men	Women	All Adults
Times used per day	3.5	3.2	3.4
Days used in row	9.8	8.8	9.5
Days in a row not used	10.3	8.9	9.9
Days used in past month	13.4	15.0	13.9
TOTAL	128-130	56-57	185-187

NOTE: Cases with missing information are not included.

SIDE EFFECTS

Respondents were asked if any of the issues on a list of problems resulted from their use of meth. Sleeplessness (84%) was the most common problem (Table 5.9). Adults also frequently reported experiencing weight loss (70%), family problems (64%), and legal problems (63%). Men were more likely than women to report sleeplessness, financial problems, paranoia, and violent behavior, while women were more likely than men to report skin problems.

Table 5.9
CONSEQUENCES OF METHAMPHETAMINE USE
Adult Methamphetamine Users, San Diego Region, 2002

	Men	Women	All Adults
Sleeplessness	87%	75%	84%
Weight loss	69%	70%	70%
Family problems	63%	65%	64%
Legal problems	63%	63%	63%
Financial problems	55%	47%	53%
Dental problems	39%	33%	37%
Paranoia	38%	30%	36%
Violent behavior	27%	19%	25%
Skin problems	18%	28%	21%
TOTAL	131	57	188

NOTE: Percentages are based upon multiple responses.

TREATMENT

Over one-third of the adults (36% of men and 35% of women) had tried to get into treatment for their meth use. Of those who did *not* try to get into treatment, the majority (68% of the men and 58% of the women) said that they did not need treatment. Others (12% of men and 11% of women) said that they did not know how to get treatment for meth or did not know treatment for meth was available. Other reasons for not trying to get into treatment included not wanting it, not being able to afford it, and not yet having followed through on a plan to get it (not shown).

Of those who tried to get into treatment, all of the women (100%) and almost all of the men (94%) were able to get into a program. The most common type of treatment for men was outpatient (55%) and for women was inpatient (70%). Nearly twice as many women (60%) as men (33%) completed their programs. Reasons for not finishing a program included wanting to use again, getting kicked out of the program, feeling the treatment was not helping them, getting arrested, still being enrolled or not having started yet, not being able to afford treatment, and not getting along with the treatment staff (not shown).

DRUG MARKET DYNAMICS

Terminology

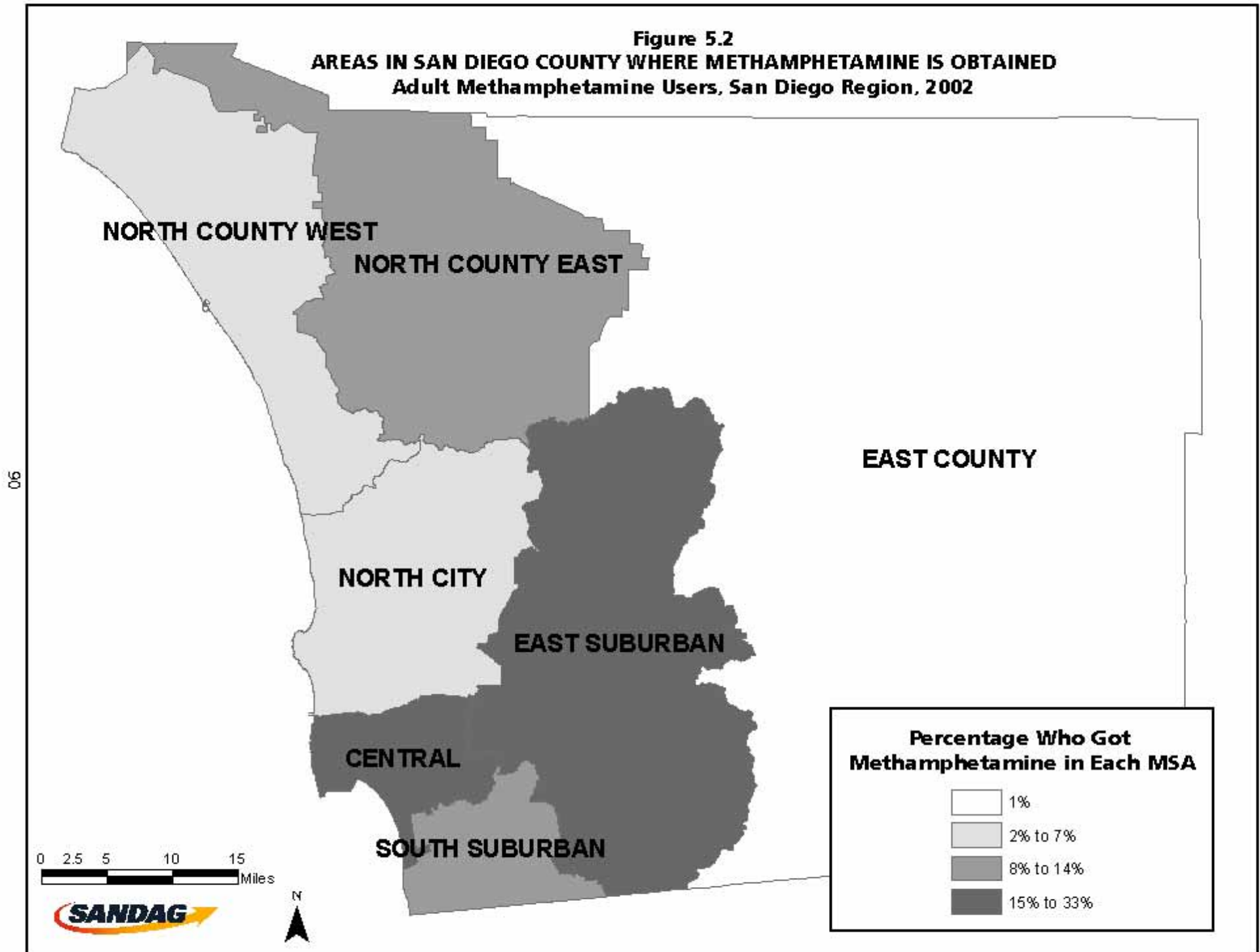
The meth users named about 30 different terms that they used to refer to meth in 2002. Many of the terms were derived from such things as the drug's various appearances (crystal, peanut butter) or its effects (speed, go fast, go). Other names have more cryptic derivations, such as "crackle back," "devil's breath," "dizzo," "fatty," "funks," "Johnny be Good," "shabibble," and "water." The most frequently mentioned terms were "sh***" and "crystal" (not shown).

Location of Purchase

More adults reported being indoors (69%) rather than outdoors when they were obtaining meth. The majority (95%) of meth users reported obtaining meth in San Diego County (not shown).

When asked where in San Diego County they usually obtained meth, of those who provided a response, one-third (33%) said an area in the Central region (such as Downtown) and less than one-third (31%) said an area in the East Suburban region (such as El Cajon) (Figure 5.2). These proportions were not surprising considering that over one-third of the adult meth users lived in the Central region and one-fifth in the East Suburban area. This information reveals that adults did not travel far from their homes to obtain meth and that it was readily available in the community in which they lived.

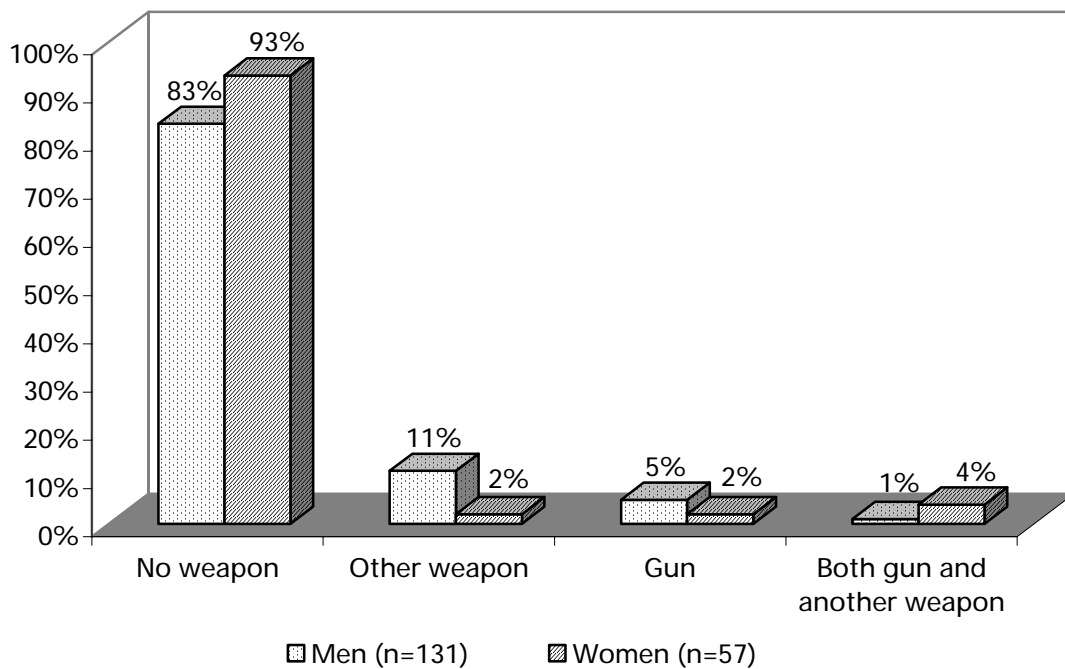
Figure 5.2
AREAS IN SAN DIEGO COUNTY WHERE METHAMPHETAMINE IS OBTAINED
Adult Methamphetamine Users, San Diego Region, 2002



Carrying a Weapon

Most meth users reported that they did not carry a weapon while getting meth in the past 30 days (Figure 5.3). However, men were twice as likely (17%) as women (8%) to report carrying either a gun or some other weapon while getting meth. Eleven percent of men carried a weapon other than a gun (e.g., knife). Five percent carried a gun only. One male meth user reported carrying both a gun and another weapon while obtaining meth in the past 30 days.

Figure 5.3
CARRYING A WEAPON WHILE OBTAINING METHAMPHETAMINE IN PAST 30 DAYS
Adult Methamphetamine Users, San Diego Region, 2002



NOTE: Percentages may not equal 100 due to rounding.

Main Source

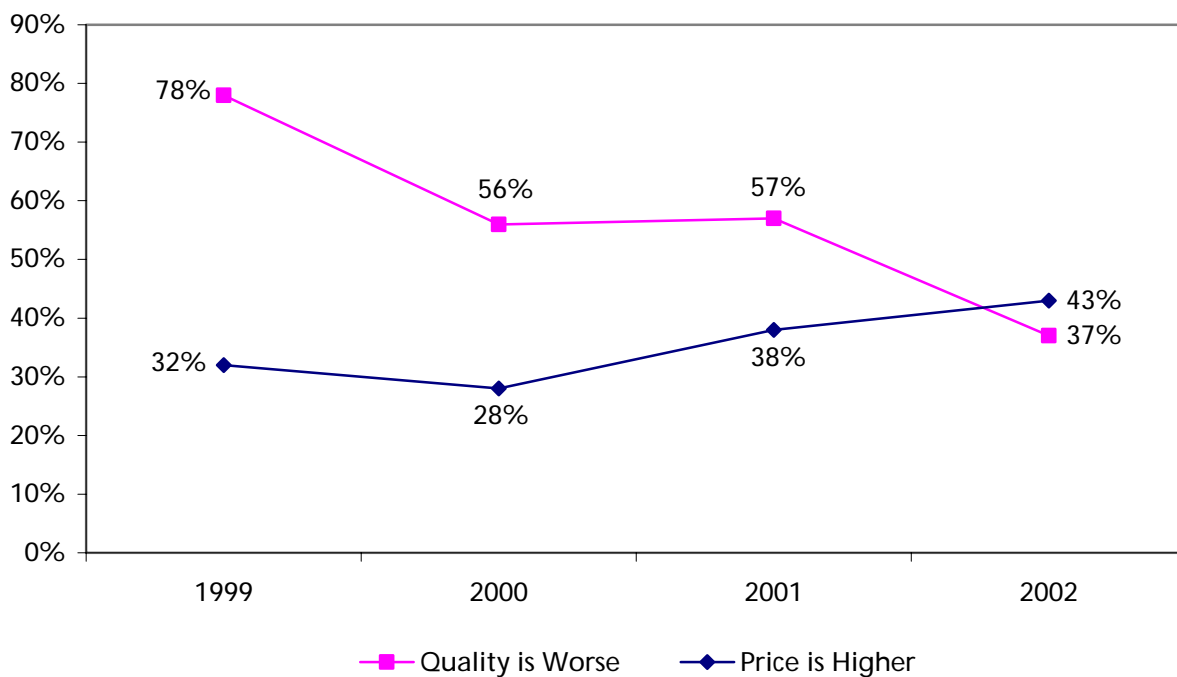
When asked if they had a main source—one dealer they usually hooked up with—over half (59%) of adults said that they did. On average, they had used this source for obtaining meth for one year (median) (range one week to 33 years). Over three-fourths (78%) obtained only meth from this main source, as opposed to other drugs. If their main source was not around, about half (51%) would often not use meth at all and about one-half (48%) also said that they usually bought from someone else instead. The main sources were predominately White (49%), followed by Hispanic (34%) (not shown).

Adults did not get meth from a lot of different people; on average, they had obtained it from 1.8 different people (range 0 to 20) in the past week. Most adults (65%) have never bought from someone they did not know (not shown).

Purity and Price

Over the past four years, fewer adults have reported that the meth they were currently using was of a lower quality than the meth from one year prior (Figure 5.4). During the same comparison years, adults were generally more likely to report that the price they were paying for meth was higher than the previous year. This pattern shows that the perceived increased quality of meth is reflected in its higher price.

Figure 5.4
PRICE AND PURITY OF METHAMPHETAMINE COMPARED TO PREVIOUS YEAR
Adult Methamphetamine Users, San Diego Region, 1999 to 2002



Selling

Participation in illegal drug activities, such as selling drugs or acting as a middleman, was not uncommon among the adult meth users. In fact, about 39 percent (40% of men and 37% of women) admitted to participating in one of those activities in the last 30 days (not shown).

The types of illegal activities adults admitted engaging in during the past month included selling drugs (including meth) (61%), acting as a middleman (61%), holding drugs or money (41%), and transporting drugs (37%) (Table 5.10). Fourteen percent (14%) said that they had committed other crimes to obtain meth in the past month. Four percent of arrestees said that they had manufactured meth in the past 30 days. Men were more likely than women to report selling drugs, holding drugs or money, or transporting drugs in the past 30 days.

Table 5.10
PARTICIPATION IN ILLEGAL DRUG ACTIVITIES IN PAST 30 DAYS
Adult Methamphetamine Users, San Diego Region, 2002

	Men	Women	All Adults
Sell drugs	66%	48%	61%
Act as a middleman	60%	62%	61%
Hold drugs or money	46%	29%	41%
Transport drugs	42%	24%	37%
Commit other crimes to obtain drugs	16%	10%	14%
Make meth	4%	5%	4%
TOTAL	50	21	71

NOTE: Cases with missing information are not included. Percentages are based upon multiple responses.

Additionally, almost half (45%) of the adults said that they had sold meth or acted as a middleman in the past year. These individuals were asked if they sold outside of San Diego County, outside of California, and outside of the U.S. One-fifth (21%) reported selling meth outside of the County, ten percent outside of the state, and two percent outside of the country (not shown).

On average, adults had started selling meth eight years prior to being interviewed (in 1994). In the previous seven days, adults reported having sold to a median of four people (range 1 to 100). In the past 30 days, they reported having earned a median of \$600 (range \$5 to \$15,000) from meth sales (not shown).

Compared to meth users who did not participate in illegal drug activities in the past 30 days, those who did participate were more likely to be younger and White (Table 5.11). Surprisingly, participants in drug-related activities were *less* likely to have been arrested on a drug or alcohol offense. Compared to non-participants, participants reported using meth more frequently in a 24-hour period (2.9 versus 4.2 times a day), on more consecutive days (7.8 versus 11.9 days), and on more days in the past 30 days (11.1 versus 18.1 days) than non-participants.

Table 5.11
CHARACTERISTICS OF METHAMPHETAMINE USERS
BY PARTICIPATION IN DRUG-RELATED ACTIVITIES
Adult Methamphetamine Users, San Diego Region, 2002

	Participated	Did Not participate
Age		
25 and under	38%	30%
26 to 30	21%	12%
31 and over	41%	58%
TOTAL	73	114
Ethnicity		
White	67%	54%
Hispanic	22%	27%
Black	8%	8%
Other	3%	11%
TOTAL	73	114
Highest Charge		
Drug/Alcohol	38%	46%
Property	26%	18%
Other	21%	25%
Violent	15%	11%
TOTAL	72	114
Frequency of Use		
Times use per day	4.2	2.9
Days used in row	11.9	7.8
Days used in past 30 days	18.1	11.1
TOTAL	72-73	111-113

NOTE: Cases with missing information are not included.

Demand and Availability

In 2002, adults who reported having sold meth in the past year predominately reported that the demand for meth had increased compared to the year prior (73%) (Table 5.12). Adult meth users generally reported that meth was more available (40%) or available about the same (46%) compared to the year before, so the perceived supply did not seem to rise to meet the perceived increase in demand.

Table 5.12
DEMAND FOR AND AVAILABILITY OF METHAMPHETAMINE COMPARED TO PREVIOUS YEAR
Adult Methamphetamine Users, San Diego Region, 2002

Demand	
Increased	73%
Same	23%
Decreased	5%
TOTAL	80
Availability	
More available	40%
Same	46%
Less available	14%
TOTAL	177

NOTE: Cases with missing information are not included. Percentages may not equal 100 due to rounding.

Cooking

Very few adults reported ever having cooked meth themselves or having helped someone else cook it, with only eleven percent admitting to this activity in 2002 (13% of men and 7% of women). Sixty-two percent (62%) of the adults who had either cooked or helped cook meth said that they learned how to do it from a friend. Others learned from a cellmate, from a dealer or cooker, or by finding the instructions on the Internet. They reported getting the chemicals (including red phosphorous, ephedrine, pseudoephedrine, iodine, hydrochloric acid, Freon, and lye) from a variety of sources, including from family members or friends, a feed store, a home improvement store, a drug store, and another meth manufacturer. Most reported that getting chemicals to cook meth in 2002 was harder than in the previous year. Most cookers usually made meth in a private residence, while others made it outdoors. Half of the adults reported making meth less than once a month (not shown).

SUMMARY

One-hundred eighty-eight (188) adults in 2002 (the majority of whom were men) who reported using meth in the ADAM interview also completed a meth addendum. Compared to adults who did not report using meth, meth users were more likely to be White, be charged with a drug or alcohol offense, live in the East Suburban area of San Diego County, and have a criminal history. About half of the users started because of their friends' or peers' use and one-third continued using because they were addicted, with their meth use often resulting in sleeplessness, weight loss, family problems, and legal problems, among other side effects. Adults tended to obtain meth in the area in which they live, with few carrying a weapon during the transaction. Over one-third reported participating in illegal drug activities, such as selling drugs or acting as a middleman, in the past 30 days. This relatively large proportion of adults engaging in such activities may be related to the perceived high demand for meth that was reported in the previous year.

REFERENCES

REFERENCES

- National Institute on Alcohol Abuse and Alcoholism (1999). *Alcohol Alert*. National Institutes of Health. www.niaaa.nih.gov.
- National Institute on Drug Abuse (1999). *Drug Detection Time Limits*. www.nida.nih.gov.
- Pennell, S., & Burke, C. (2003). *The Incidence and Prevalence of Domestic Violence Victimization Among Female Arrestees in San Diego County*. San Diego Association of Governments.
- Substance Abuse and Mental Health Services Administration (2002). National Household Survey on Drug Abuse.
- Substance Abuse and Mental Health Services Administration (2003). *Overview of Findings From the 2002 National Survey on Drug Use and Health*. Department of Health and Human Services.
- U.S. Census Bureau (2000). *Profile of General Demographic Characteristics: 2000*. U.S. Department of Commerce, Economics and Statistics Administration.
- U.S. Census Bureau (2002). *Health Insurance Coverage: 2001*. U.S. Department of Commerce, Economics and Statistics Administration.
- U.S. Census Bureau (2002). Census Summary Files. www.census.gov.
- U.S. Department of Justice (2003). *Drug Use and Related Matters Among Adult Arrestees, 2002*. National Institute of Justice, Arrestee Drug Abuse Monitoring Program.

INSTRUMENTS

IN5. Interview start time _____ a.m. | p.m. [CIRCLE ONE]

[LABEL]



NOTICE- The ADAM interviews, specimens, and data are protected by Title 42 of the United States Code, Subsection 3789g (42 U.S.C. §3789g), and Title 28 of the Code of Federal Regulations, Part 22 (28 CFR Part 22), which provides that no officer or employee of the Federal Government, and no recipient of assistance shall use or reveal any research or statistical information furnished by any person and identifiable to any specific private person other than for research and statistical purposes. Furthermore, 28 CFR §22.29 provides that such information and copies thereof shall be immune from legal process, and shall not, without the consent of the person furnishing the information, be admitted as evidence or used for any purpose in any action, suit, or other judicial, legislative, or administrative proceedings. The regulations also indicate that any person violating these provisions can be fined up to \$10,000 in addition to any other penalty imposed by law. Send comments regarding any other aspect of this collection of information to Director, National Institute of Justice, 810 Seventh Street, NW, Washington, DC 20531; and to the Office of Management and Budget, Paperwork Reduction Project, Washington, DC 20530.

DEMOGRAPHICS

D1. How old are you? _____

D2. a) Are you of Hispanic or Latino/a origin or background? **[0= NO, SKIP TO D3; 1= YES]** _____

b) Which background describes you best:

1= Mexican, Mexican American, Chicano/a;
 2= Puerto Rican;
 3= Cuban; or,

4= Other Hispanic or Latino/a background? **[SPECIFY]** _____

5= MULTIETHNIC **[SPECIFY]** _____

D3. a) How would you describe your racial background; that is, which group or groups describe you best:

1= White;
 2= Black or African-American;
 3= American Indian or Alaska Native;
 4= Native Hawaiian or Pacific Islander; or,
 5= Asian? **[ASK D3b]** _____

6= OTHER **[SPECIFY]** _____

7= MULTIRACIAL **[SPECIFY]** _____

[IF NON-ASIAN, SKIP TO D4]

b) How would you describe yourself: _____

1= Asian Indian or Pakistani;
 2= Chinese;
 3= Filipino/a;
 4= Japanese;
 5= Korean;
 6= Vietnamese; or,

7= Other? **[SPECIFY]** _____

8= MULTIETHNIC **[SPECIFY]** _____

D4. a) Were you born in the United States or U.S. Territories? **[0= NO; 1= YES, SKIP TO D5]** _____

b) In what country were you born? **[SPECIFY]** _____

c) Are you now a United States citizen? **[0= NO; 1= YES, SKIP TO D5]** _____

d) What is your current status:

1= Permanent resident with green card;
 2= Work or other visa;
 3= Other legal documents; or,
 4= No legal documents?

[IF INTERVIEW COMPLETED, SKIP TO URINE SAMPLE REQUEST]

IN7. **[IF PARTIAL INTERVIEW, RECORD END TIME AND REASON]**

a) Partial interview end time a) _____ a.m. | p.m. **[CIRCLE ONE]**

b) Reason not completed b) _____

1= DID NOT WANT TO
 2= TAKEN TO COURT
 3= RELEASED
 4= TRANSFERRED
 5= MEDICAL UNIT
 6= VIOLENT OR UNCONTROLLED BEHAVIOR
 7= PHYSICALLY ILL
 8= LANGUAGE **[SPECIFY]** _____
 9= SHIFT ENDED
 10= OTHER **[SPECIFY]** _____

Urine Sample Request



As I mentioned at the start of the interview, we are also collecting urine specimens. Again, this is completely confidential and unavailable to anyone else, so it cannot affect your case. (I am going to ask the officer to take you to a restroom for me. After you've finished, I can give you a *[incentiv]* for participating in the study.) Thank you.

U1. _____

Urine specimen status

0= RESPONDENT REFUSED

1= SPECIMEN PROVIDED

2= RESPONDENT ATTEMPTED BUT NO SPECIMEN PROVIDED

3= RESPONDENT NOT AVAILABLE, e.g., TAKEN TO COURT

4= OTHER **[SPECIFY]** _____

PRIMARY DRUG USE

MU30.
We talked about this earlier, but please remind me; regardless of how or when you got it, did you use [drug] in the past 30 days?
0= NO
1= YES

[IF 0=NO, GO TO NEXT DRUG OBTAINED; IF LAST DRUG, GO TO STOP SIGN]

MU31.	MU32.	MU33.	MU34.
On how many days did you use [drug] in the past 7 days?	On how many of the past 30 days did you use [drug]?	During the past 3 days, on how many days did you use [drug]?	Think about the last time you used [drug]. How did you use it? Did you: 1= Smoke it; 2= Sniff it through your nose or snort it; 3= Inject it by needle; or, 4= Eat it or swallow it? 5= OTHER [SPECIFY]

[GO TO NEXT DRUG OBTAINED; IF LAST DRUG, SKIP TO STOP SIGN]

CUT 2"

MA30	MA31 /7	MA32 /30	MA33 /3	MA34 SPECIFY
CC30	CC31 /7	CC32 /30	CC33 /3	CC34 SPECIFY
PC30	PC31 /7	PC32 /30	PC33 /3	PC34 SPECIFY
HE30	HE31 /7	HE32 /30	HE33 /3	HE34 SPECIFY
ME30	ME31 /7	ME32 /30	ME33 /3	ME34 SPECIFY

OK, let's start with where you have lived. We'll use the calendar to record where you lived each month over the last 12 months.

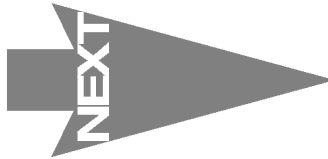
H1.

Starting in [month 1], where did you live most of the time:

- 1= House, mobile home, or apartment;
- 2= Residential hotel, rooming house, dormitory, group home, student housing, or military base;
- 3= Hospital, treatment facility, or extended care facility;
- 4= Jail, prison, or correctional boot camp;
- 5= Shelter; or,
- 6= No fixed residence or homeless?
- 7= OTHER

H2-H11.

Did your housing situation change between [month 1] and [1st anchor]?
[RECORD HOUSING SITUATION; CODE 1-7 FOR MONTHS 2-11]



cut
2.75"



T1	T4	T5	T6	T7	T8	T9	T10	T11	T12	T13	T14	T15	T16	T17
T2	T18	T19	T20	T21	T22	T23	T24	T25	T26	T27	T28	T29	T30	T31
T3	T32	T33	T34	T35	T36	T37	T38	T39	T40	T41	T42	T43	T44	T45

EVER [0=NO, 1=YES] [IF NO HEALTHCARE/TREATMENT (T1-T3), FLIP PAGE]
Using the calendar, now let's look at your health care and treatment experiences, month-by-month over the last twelve months.

T1. Did you ever stay at least overnight in an inpatient or residential drug or alcohol treatment program, for example, detox, rehab, a therapeutic community, or a hospital? **[IF NO, CODE 0 IN EACH CELL AND SKIP TO T17]**

◆ When? **[FOR EACH MONTH INPATIENT]**
◆ How many nights did you stay overnight? **[RECORD 0=NONE, 1-30=NIGHTS]**

T16. How many different times were you admitted into an inpatient drug or alcohol treatment program over the past twelve months? **[RECORD NUMBER OF ADMISSIONS]**

Before *[month 1]*, did you stay at least overnight in an inpatient drug or alcohol treatment program, for example, detox, rehab, a therapeutic community, or a hospital? **[IF NO, CODE 0 AND SKIP TO T18]**

◆ Please tell me your best estimate of the number of nights you spent in inpatient programs altogether prior to *[month 1]*. **[RECORD NUMBER OF NIGHTS]**

...NONCASH...

MU26. How much of the <i>[drug]</i> you <i>[got /made/harvested]</i> was for you to use yourself?	MU27. On that same day, how many <u>times</u> did you get <i>[drug]</i> in <u>any</u> way <u>without</u> paying cash for it?	MU28. Thinking about this last week, on how many of the past <u>7 days</u> did you get <i>[drug]</i> without paying any cash?	MU29. On how many of the past <u>30 days</u> did you get <i>[drug]</i> without paying any cash?
MA26 %	MA27	MA28 /7	MA29 /30 →
CC26 %	CC27	CC28 /7	CC29 /30 →
PC26 %	PC27	PC28 /7	PC29 /30 →
HE26 %	HE27	HE28 /7	HE29 /30 →
ME26 %	ME27	ME28 /7	ME29 /30 →

CUT 2"

...NONCASH...

cut
1.75

These next questions deal with the last time you got [drug] without paying any cash in the last 30 days.

	MU23. Think about the last time you got [drug] without paying any cash for it. Did you: 1= [IF MARIJUANA] harvest Marijuana you grew yourself; [IF CRACK] make it yourself; [IF CRYSTAL METH] make it yourself; 2= Get it on credit and will pay cash later; 3= Get it fronted to sell; 4= Trade other drugs; 5= Trade property/merchandise; 6= Transport drugs; 7= Steal the drug; 8= Trade sex; or, 9= Receive it as a gift? 10= OTHER [SPECIFY] 11= MULTIPLE [SPECIFY] [IF 1, SKIP TO MU25]	MU24. The last time you got [drug] without cash, how did you contact the person who gave it to you? Did you: 1= Page the person on a beeper; 2= Call the person on a telephone and speak with the person directly; 3= Go to a house or apartment; 4= Approach the person in public such as on the street, in a store, or park; or, 5= Were you with the person already at work or in a social setting? 6= OTHER [SPECIFY]	MU25. How much [drug] did you [get/make/harvest] that last time? a) # OF UNITS b) TYPE OF UNITS CODES: 1= BAG OR BALLOON 2= CAPSULE 3= FOIL PACKET 4= GRAM 5= JOINT 6= LINE 7= OUNCE 8= POUND 9= ROCK 10= VIAL 11= OTHER [SPECIFY]
IF NO SKIP TO USE	MA23 OTHER SPECIFY MULTIPLE SPECIFY	MA24 SPECIFY	MA25a MA25b SPECIFY
IF YES	CC23 OTHER SPECIFY MULTIPLE SPECIFY	CC24 SPECIFY	CC25a CC25b SPECIFY
IF NO SKIP TO USE	PC23 OTHER SPECIFY MULTIPLE SPECIFY	PC24 SPECIFY	PC25a PC25b SPECIFY
IF YES	HE23 OTHER SPECIFY MULTIPLE SPECIFY	HE24 SPECIFY	HE25a HE25b SPECIFY
IF NO SKIP TO USE	ME23 OTHER SPECIFY MULTIPLE SPECIFY	ME24 SPECIFY	ME25a ME25b SPECIFY

T2.

Have you ever been admitted to an outpatient drug or alcohol treatment program, not including meetings like AA or NA? By "outpatient program" I mean a drug or alcohol treatment program where you do not stay overnight.

T3.

Have you ever stayed at least overnight for mental health treatment—not for drug or alcohol use—at a psychiatric unit of a hospital or other facility?

T18-T29.

[IF EVER OUTPATIENT] Between [month 1] and today, were you in any outpatient drug or alcohol treatment programs? By outpatient, I mean a drug or alcohol treatment program where you do not stay overnight. Do not include AA or NA.

[IF NO, CODE 0 IN EACH CELL AND SKIP TO T31]

◆ When? [CODE 0=NO, 1=IN PROGRAM FOR EACH MONTH]

T30. How many different times were you admitted into an outpatient drug or alcohol treatment program over the past twelve months?
[RECORD NUMBER OF ADMISSIONS]

T31. Before [month 1], were you in any outpatient drug or alcohol treatment programs, not including meetings like AA or NA? [IF NO, CODE 0 AND SKIP TO T32]

◆ Please tell me your best estimate of the number of times you were admitted to an outpatient drug or alcohol treatment program before [month 1].
[RECORD NUMBER OF ADMISSIONS]

T32-T43

[IF EVER MENTAL HEALTH] Between [month 1] and today, were you in mental health treatment—not for drug or alcohol use—in a psychiatric unit of a hospital or other facility for at least one overnight stay?
[IF NO, CODE 0 IN EACH CELL AND SKIP TO T45]

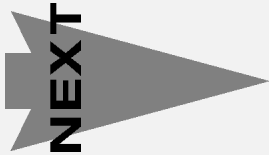
◆ When? [FOR EACH MONTH IN PSYCH UNIT]

◆ How many nights did you stay overnight?
[RECORD 0=NONE, 1-30=NIGHTS]

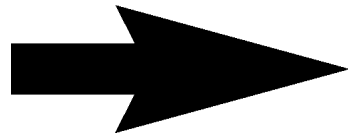
T44. How many different times were you admitted for mental health treatment—not for drug or alcohol use—over the past twelve months?
[RECORD NUMBER OF ADMISSIONS]

T45. Before [month 1], were you admitted for mental health treatment—not for drug or alcohol use—to a psychiatric unit of a hospital or other facility?
[IF NO, CODE 0 AND SKIP TO NEXT PAGE]

◆ Please tell me your best estimate of the number of nights you spent in a psychiatric unit of a hospital or other facility—not for drug or alcohol use—altogether before [month 1].
[RECORD NUMBER OF NIGHTS]



FOLD OUT



C1	C2	C3	C4	C5	C6	C7	C8	C9	C10	C11	C12	C13	C14	C15
		ARREST												
		JAIL / PRISON												

EVER [0=NO, 1=YES]

C1. Before this arrest, have you ever been arrested—that is, charged on a criminal offense or picked up on a warrant and booked at a holding facility like this one? Please do not include juvenile arrests.

[IF NO ARRESTS/JAIL (C1-C2), FLIP PAGE]

Now let's talk about your experiences with the criminal justice system before this arrest.

C3-C14. **[IF EVER ARRESTED]** Between [month 1] and this arrest, were you arrested and booked? Please do not include juvenile arrests. **[IF NO, CODE 0 AND SKIP TO C15]**

C15. When? **[FOR EACH MONTH ARRESTED]**
Please tell me your best estimate of the number of times you were arrested that month. **[RECORD 0=NONE, OR NUMBER OF ARRESTS]**

Before [month 1], were you arrested at any time, not including juvenile arrests? **[IF NO, CODE 0 AND SKIP TO C16]**

Please tell me your best estimate of the total number of times in your life you were arrested prior to [month 1], not including juvenile arrests. **[RECORD NUMBER OF ARRESTS]**

...CASH...

MU17.	MU18.	MU19.	MU20.	MU21.	MU22.
On how many of the past 30 days did you buy [drug]?	In the past 30 days, how many different people did you buy [drug] from?	Was there a time in the past 30 days when you tried to buy [drug] and had the cash, but you did not buy any? 0= NO 1= YES	The last time that happened, why didn't you buy [drug]: 1=No dealers were available; 2=Dealers did not have any; 3=Dealers did not have the quality you wanted; or, 4=Police activity kept you from the dealers? 5=OTHER [SPECIFY]	Did you buy another drug or alcohol instead? 0= NO 1= YES	What did you buy instead? 1= ALCOHOL 2= MARIJUANA OR HASHISH 3= CRACK OR ROCK COCAINE 4= POWDER COCAINE 5= HEROIN 6= METHAMPHETAMINE 7= OTHER [SPECIFY] 8= MULTIPLE [SPECIFY]
MA17 /30	MA18	MA19	MA20 SPECIFY	MA21	MA22 OTHER SPECIFY MULTIPLE SPECIFY
CC17 /30	CC18	CC19	CC20 SPECIFY	CC21	CC22 OTHER SPECIFY MULTIPLE SPECIFY
PC17 /30	PC18	PC19	PC20 SPECIFY	PC21	PC22 OTHER SPECIFY MULTIPLE SPECIFY
HE17 /30	HE18	HE19	HE20 SPECIFY	HE21	HE22 OTHER SPECIFY MULTIPLE SPECIFY
ME17 /30	ME18	ME19	ME20 SPECIFY	ME21	ME22 OTHER SPECIFY MULTIPLE SPECIFY

cut 1.75

CUT 2.25"

	MU12.	MU13.	MU14.	MU15.	MU16.
	How much cash did you pay for [drug] that last time you bought it?	How much [drug] did you get for that amount of cash? a) # OF UNITS b) TYPE OF UNITS CODES: 1= BAG OR BALLOON 2= CAPSULE 3= FOIL PACKET 4= GRAM 5= JOINT 6= LINE 7= OUNCE 8= POUND 9= ROCK 10= VIAL 11= OTHER [SPECIFY]	How much of the [drug] you bought was for you to use yourself?	How many times did you buy [drug] on that same day?	Thinking about this last week, on how many of the past 7 days did you buy [drug]?
	MA12 \$	MA13a MA13b SPECIFY	MA14 %	MA15	MA16 /7
	CC12 \$	CC13a CC13b SPECIFY	CC14 %	CC15	CC16 /7
	PC12 \$	PC13a PC13b SPECIFY	PC14 %	PC15	PC16 /7
	HE12 \$	HE13a HE13b SPECIFY	HE14 %	HE15	HE16 /7
	ME12 \$	ME13a ME13b SPECIFY	ME14 %	ME15	ME16 /7

C16-C27. [IF EVER JAIL/PRISON] Between [month 1] and today, were you held in jail for at least 24 hours, or did you serve time in a jail, prison, juvenile detention facility, or boot camp?
[IF NO, CODE 0 IN EACH CELL AND SKIP TO C28]

◆ When? [FOR EACH MONTH INCARCERATED]
 ◆ Please tell me your best estimate of the number of days you were in jail, prison, juvenile detention facility or boot camp that month.
[RECORD 0=NONE, 1-30=DAYS]

C28. Before [month 1], were you held in jail, or did you serve time in a jail, prison, juvenile detention facility, or boot camp?
[IF NO, CODE 0 AND SKIP TO NEXT PAGE]

◆ Please tell me your best estimate of the total number of days in your life you were in jail or correctional facilities before [month 1]. [RECORD NUMBER OF DAYS]

ADAM
 National Institute of Justice
 Page 8

CUT 5.375"

NEXT

ASK BOTH MU2 AND MU3 FOR EACH DRUG OBTAINED BEFORE ASKING MU4

MU2. [0=NO, 1=YES]
In the past 30 days, did you pay any cash for [drug]?

MU3.
In the past 30 days, did you get any [drug] without paying cash for it?

- * [IF MARIJUANA] This could include Marijuana you grew yourself.
- * [IF CRACK OR ROCK COCAINE] This could include making it yourself.
- * [IF CRYSTAL METH] This could include making it yourself.

The next several questions deal with drugs that you paid cash for in the last 30 days.

Think about the last time you paid any cash for [drug]. This could include any you were fronted to sell or received on credit, and paid for at a later time.

MU4.
Did you pay cash only, or did you pay cash and something else?
1=CASH
2=COMBINATION
[IF MU4=1, SKIP TO MU6]

MU5.
What else, besides cash, was exchanged or traded the last time you bought [drug]? Did you also:
1= Trade other drugs;
2= Trade property/merchandise;
3= Transport drugs;
4= Steal the drug; or,
5= Trade sex?
6= OTHER [SPECIFY]
7= MULTIPLE [SPECIFY]

MU6.
That last time you bought [drug], did you:
1= Buy it directly yourself; or,
2= Give someone the cash to buy it for you?
[IF MU6=1, SKIP TO MU8]

MU7.
Is the person you gave the cash to:
1=Someone working with a dealer; or,
2=Someone not working with a dealer?
[IF MU7=2, SKIP TO MU12, TURN PAGE]

*** MARIJUANA OR HASHISH**

Cash MA2 **IF YES**

OBTAINED

Noncash MA3 **IF YES ASK NONCASH**

*** CRACK OR ROCK COCAINE**

Cash CC2 **IF YES**

OBTAINED

Noncash CC3 **IF YES ASK NONCASH**

POWDER COCAINE

Cash PC2 **IF YES**

OBTAINED

Noncash PC3 **IF YES ASK NONCASH**

HEROIN

Cash HE2 **IF YES**

OBTAINED

Noncash HE3 **IF YES ASK NONCASH**

*** METHAMPHETAMINE LIKE CRYSTAL METH**

Cash ME2 **IF YES**

OBTAINED

Noncash ME3 **IF YES ASK NONCASH**

MA5
MA6
MA7
OTHER SPECIFY
MULTIPLE SPECIFY

CC5
CC6
CC7
OTHER SPECIFY
MULTIPLE SPECIFY

PC5
PC6
PC7
OTHER SPECIFY
MULTIPLE SPECIFY

HE5
HE6
HE7
OTHER SPECIFY
MULTIPLE SPECIFY

ME5
ME6
ME7
OTHER SPECIFY
MULTIPLE SPECIFY

...CASH...

O=NO, 1=YES

EVER **12 MO** **AGE**

S1. IF YES: Have you ever had 5 or more drinks of beer, wine, or any other type of alcohol on the same day? **S3.** Did you have 5 or more drinks on the same day any time in the past 12 months—that is, between [month 1] and today?

S4. IF YES: Have you ever used any Marijuana or Hashish? **S6.** Did you use Marijuana or Hashish in the past 12 months—that is, between [month 1] and today?

S7. IF YES: Have you ever used any Crack or Rock Cocaine? **S9.** Did you use Crack or Rock Cocaine in the past 12 months—that is, between [month 1] and today?

S10. IF YES: Have you ever used any Powder Cocaine? **S12.** Did you use Powder Cocaine in the past 12 months—that is, between [month 1] and today?

S13. IF YES: Have you ever used any Heroin? **S15.** Did you use Heroin in the past 12 months—that is, between [month 1] and today?

S16. IF YES: Have you ever used any Methamphetamine like Crystal Meth? **S18.** Did you use Crystal Meth in the past 12 months—that is, between [month 1] and today?

S19. IF YES: Not including alcohol and these five drugs, have you ever used any other drug, not counting drugs for which you have a prescription or over the counter drugs? [IF NO, SKIP] **S20a.** Which drug did you use most often? [RECORD DRUG] **S21.** Did you use [drug] in the past 12 months—that is, between [month 1] and today?

GO TO DRUG GATEWAY

Now let's talk about your use of alcohol or other drugs. You can use this showcard, which shows the different levels for your answers. [REVIEW LEVELS WITH RESPONDENT]

S22-S32. Please tell me your best estimate of the level that represents the number of days you had five or more drinks—including wine, beer, or any type of alcohol on the same day in [month 1].

S33-S98. Please tell me your best estimate of the level that represents the number of days you used [drug] in [month 1].

How about between [month 1] and [1st anchor]? [RECORD LEVELS 0-3 FOR ALL MONTHS]

How about between [month 1] and [1st anchor]? [FOR EACH DRUG USED PAST 12 MONTHS [S6 - S18]]

- Marijuana or Hashish
- Crack or Rock Cocaine
- Powder Cocaine
- Heroin
- Methamphetamine like Crystal Meth
- Other Drug [IF OTHER DRUG (S21) ONLY]

[IF ANY 12-MONTH PRIMARY DRUG USE, TURN PAGE]

STOP **DRUG GATEWAY** [IF ANY 12 MONTH DRUG USE (S6 - S21) GO TO ANCHORS (TOP OF CALENDAR)]

IF EVER ARRESTED (C1=YES) **IF C1=NO, TURN PAGE**

C0. You said you were arrested before this arrest. Please give me your best estimate of the number of times you were arrested in the past 12 months; that is, between [month 1] and this arrest. Do not include juvenile arrests. [RECORD NUMBER OF ARRESTS, TURN PAGE]

IF NO TWELVE MONTH DRUG USE

DEPENDENCE AND ABUSE

[REFER TO CALENDAR AOD 12 MONTH USE (S3-S21)]

ALCOHOL

ALCOHOL USE PAST 12 MONTHS
DA0a.

[0=NO, 1=YES]

DRUGS

DRUG USE PAST 12 MONTHS
DA0b.

[IF NO 12 MONTH ALCOHOL OR DRUG USE, SKIP TO MARKET AND USE]

IF YES
DRUGS

Now I would like to ask you about experiences related to alcohol or drug use that you may have had in the past 12 months. [0= NO, 1= YES]

- DA1. In the past 12 months, have you spent more time: a) drinking than you intended? b) using drugs than you intended?
- DA2. Have you neglected some of your usual responsibilities: a) because of using alcohol? b) because of using drugs?
- DA3. Have you wanted to cut down: a) on your drinking? b) on your drug use?
- DA4. In the past 12 months, has anyone objected to: a) your use of alcohol? b) your drug use?
- DA5. Have you frequently found yourself thinking about: a) drinking? b) using drugs?
- DA6. Have you: a) used alcohol to relieve feelings such as sadness, anger, or boredom? b) used drugs to relieve feelings such as sadness, anger, or boredom?

[IF NO ALCOHOL USE (DA0a=0), SKIP TO DA7b]

[IF NO TO ALL ALCOHOL DA1a-DA6a, SKIP TO DA7b]

DA7a. You said that, in the past 12 months, you
[READ ALL ALCOHOL ITEMS CODED YES].
 When was the last time any of these things happened:
 1=Within the past 7 days;
 2=Within the past 8 to 30 days;
 3=Within the last six months but more than one month ago; or,
 4=More than six months ago but within the last 12 months?

DA7b. You said that, in the past 12 months, you
[READ ALL DRUG ITEMS CODED YES].
 When was the last time any of these things happened:
 1=Within the past 7 days;
 2=Within the past 8 to 30 days;
 3=Within the last six months but more than one month ago; or,
 4=More than six months ago but within the last 12 months?

DA8. In the past 12 months, did you inject any drug in order to get high? **[0= NO, 1= YES]**

[FOR EACH DRUG, TURN PAGE AND RECORD 1=YES FOR DRUGS OBTAINED AND 0=NO FOR NO DRUGS OBTAINED]

[IF ALL 0= NO, SKIP TO PRIMARY USE (MU 30) Page 19]

MARKET AND USE

MU1. In the past 30 days, regardless of whether or not you used it yourself: [0= NO, 1= YES]

Did you get any Marijuana or Hashish? This could include harvesting Marijuana you grew yourself.

Did you get or make any Crack or Rock Cocaine?

Did you get any Powder Cocaine?

Did you get any Heroin?

Did you get or make any Methamphetamine like Crystal Meth?

METHAMPHETAMINE ADDENDUM

ADAM ID _____

SEX ____ (1 = men , 2 = women, 3 = boys, 4 = girls)

Interviewer Initials ____

SITE # ____

DATE ____/____/_____

INTRODUCTION

You said earlier that you've used crystal meth in the past 30 days. Now I'd like to ask you some more detailed questions about your experience with meth. Remember that everything you say is still confidential. It's very important for the research that we get accurate and honest information, so if there's a question you don't want to answer, just let me know.

- (1) What term(s) do you use to refer to meth? (DO NOT READ - CIRCLE ALL THAT APPLY)
(2) What year did you start using meth?
(3) Why did you start using meth? (DO NOT READ - CIRCLE ALL THAT APPLY)
(4) Why are you using meth now? (DO NOT READ - CIRCLE ALL THAT APPLY)
(5) How do you usually use meth? (ONE ANSWER - PROBE FOR METHOD USED MOST OFTEN)
(6) How much meth do you use each time you get high?
(7) On a day you use meth, how many times do you use?
(8) During the last month, what was the most days in a row (longest run) you used meth?
(9) During the last month, what was the most days in a row (longest run) you went without using meth?
(10) Why did you go that long without using it?
(11) Has your meth use resulted in any of the following?

- (12) Compared to a year ago, what if any changes have you noticed about the quality of the meth you're using? (CIRCLE ONE)
1. Quality is worse
 2. Quality is the same
 3. Quality is better
 4. Don't know/NA
- (13) Have you bought meth in the last 7 days? (CROSS CHECK)
1. Yes
 2. No (SKIP TO QUESTION 14)
- (13a) How many times did you buy in the last 7 days?

- (14) Compared to a year ago, what if any changes have you noticed about the price you're paying for meth? (CIRCLE ONE)
1. Price is lower
 2. Price is the same
 3. Price is higher
 4. Don't know/NA
- (15) Where do you typically buy/get meth? (READ AND CIRCLE ONE)
1. Indoors
 2. Outdoors
 9. Don't know
- (16) Do you get meth within the County?
1. Yes (PLEASE SPECIFY AREA) _____
 2. No
- (17) How many different people have you gotten meth from in the past 7 days? (NO RANGES!) _____
- (18) Do you have a main source – one dealer you usually hook up with?
1. Yes
 2. No (SKIP TO Q.19)
- (18a) How long have you used that person?
_____ days
_____ months
_____ years
- (18b) Do you get other drugs from that main source? (CROSS CHECK WITH ADAM GRID)
1. Yes
 2. No
- (18c) What do you usually do if your main source isn't around? (CIRCLE ALL THAT APPLY)
1. Buy from someone else
 2. Get it through a friend
 3. Use another drug
 4. Don't buy, do without
 5. Other _____
- (18d) What is the ethnicity of your main source? (DON'T READ CHOICES)
1. White
 2. Black
 3. Hispanic
 4. Asian/Pacific Islander
 5. American Indian/Alaskan native
 6. Other _____
- (19) Have you ever bought from someone you didn't know?
1. Yes
 2. No
- (20) In the past 30 days, have you carried a gun or other weapon while you were getting meth?
1. Yes, gun
 2. Yes, other weapon (i.e., knife)
 3. Yes, both
 4. No
- (21) In the past 30 days, did you get meth without paying cash for it?
1. Yes
 2. No
- (22) In the past 30 days, was there a time when you wanted to get meth, but couldn't get any?
1. Yes
 2. No (SKIP TO Q.24)
- (23) Why do you think it was hard to get? (DON'T READ - CIRCLE ONE)
1. Dealer not available
 2. Dealer out of meth (due to supply, lack of chemicals)
 3. Dealer charging too much
 4. Police activity hot
 5. Holiday/Sunday
 6. In jail
 7. Lab shut down/blew up
 8. No reason/don't know
 9. Other _____
- (24) Compared to a year ago, would you say meth is more available, less available, or available about the same?
1. More available
 2. Less available
 3. About the same
 4. Don't know
- (25) Have you ever tried to get treatment for your meth use?
1. Yes (ASK Q.25b-e)
 2. No (ASK Q.25a)
- (25a) If no, why not? (CIRCLE ONE, PROBE FOR MAIN REASON) (THEN SKIP TO Q.26)
1. Don't need treatment
 2. Can't afford it
 3. Don't think it's available/don't know how to get
 4. Other _____
- (25b) Did you get into a program?
1. Yes (IF YES, SKIP TO Q.25d)
 2. No
- (25c) If no, why not? (CIRCLE ONE. PROBE FOR MAIN REASON) (THEN SKIP TO Q.26)
1. Waiting list too long
 2. Changed my mind
 3. Got arrested
 4. Too expensive
 5. No transportation, too far away
 6. Other _____

- (25d) What type of program was it? (READ AND CIRCLE ONE - PROBE FOR MOST RECENT INCIDENT)
1. In-patient (residential)
 2. Out-patient
 3. Detox
 4. Jail/prison program
 5. NA/AA
 6. Other _____
- (25e) Did you complete the program? (REFER TO THE SAME PROGRAM AS ABOVE)
1. Yes (SKIP TO QUESTION 26)
 2. No
- (25f) If no, why not? (CIRCLE ONE. PROBE FOR MAIN REASON)
1. Program too long
 2. Didn't get along with staff
 3. Wasn't doing any good
 4. Wanted to start using again
 5. Program too strict
 6. Couldn't afford it
 7. Got arrested/sent to jail, prison
 8. Kicked out
 9. Other _____
- (26) In the past 30 days, did you participate in any drug-related activities? (OTHER THAN USE)
1. Yes (IF YES, ASK Q.26a)
 2. No (SKIP TO Q.27)
- (26a) If Yes, did you: (READ AND CIRCLE ALL THAT APPLY)
1. Sell drugs
 2. Act as a middleman
 3. Hold drugs/or money
 4. Make meth
 5. Committed other crimes to obtain drugs
 6. Transported drugs
 7. Other (PLEASE SPECIFY) _____
- (27) Have you, yourself, sold meth or acted as a middleman in the last year?
1. Yes
 2. No (SKIP TO Q.36)
- (28) In what year did you start dealing meth/acting as a middleman? _____
- (29) Do you sell/middleman outside the: (READ AND CIRCLE ALL THAT APPLY)
1. County
 2. State
 3. Country
 4. No
- (30) In the past 7 days, about how many different people have you sold to or obtained meth for?
(NO RANGES) _____
- (31) In the past 30 days, how much money have you made selling meth/acting as a middleman? (NO RANGES!
CROSS CHECK WITH ADAM QUESTION 8) _____
- (32) What's the smallest amount you sell or obtain for others?

(specify grams)
- (33) Are you currently selling meth or acting as a middleman?
1. Yes (SKIP TO Q.35)
 2. No
- (34) Why did you stop selling meth or acting as a middleman? (DON'T READ RESPONSES, CIRCLE ONE. PROBE FOR MOST IMPORTANT REASON)
1. Tired of getting busted
 2. Tired of the lifestyle
 3. Started selling another drug
 4. For my family
 5. Police activity hot
 6. Feared for my life
 7. In jail
 8. Other _____
- (35) Compared to a year ago, would you say the demand for meth has increased, decreased, or stayed the same?
1. Increased
 2. Decreased
 3. Stayed the same
 4. Don't know
- (36) Have you ever cooked meth yourself, or helped someone else to cook it?
1. Yes (ASK Q.36a)
 2. No (SKIP TO Q.49)
- (36a) If Yes, did you ... (READ AND CIRCLE ALL THAT APPLY)
1. Cook meth
 2. Get the chemicals for someone else to cook it
 3. Find a cooking location
 4. Get equipment to cook meth
 5. Cut/package meth
 6. Other (PLEASE SPECIFY) _____
- (37) Have you cooked in the past 12 months?
1. Yes (ASK Q.37a)
 2. No (SKIP TO Q.38)
- (37a) Have you cooked in the past 30 days?
1. Yes
 2. No
- (38) What year did you start cooking/helping to cook meth?

- (39) Who taught you how to cook it? (DON'T READ RESPONSES, CIRCLE ONE)
1. Friend
 2. Parents
 3. Cell mate
 4. Internet
 5. Dealer/cooker
 6. Another user
 7. Spouse/significant other
 8. Other (PLEASE SPECIFY) _____

