

# San Diego County

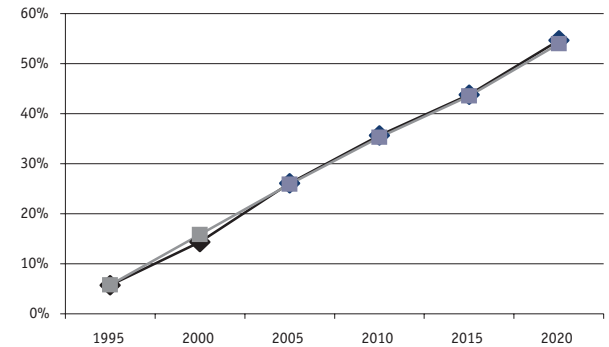
## POPULATION

### Population Trend:

1990 Population	2,498,016
Portion of pop. living in unincorporated area	16.0%
2000 Population	2,856,300
Portion of pop. living in unincorporated area	16.1%
Population change, 1990 to 2000	14.3%
Projected population change, 2000 to 2010	18.6%

### POPULATION TREND

Percent change relative to 1990



### Population by Age, 2003:

	under 18	18-34	35-49	50-64	65+	Average Age
County	28.0%	28.4%	20.6%	12.7%	10.4%	33.7
State	28.4%	23.1%	23.2%	15.2%	10.2%	36.7

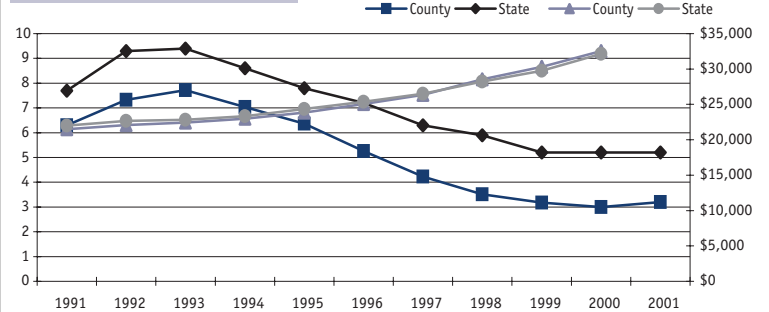
## ECONOMY

### Workforce Characteristics:

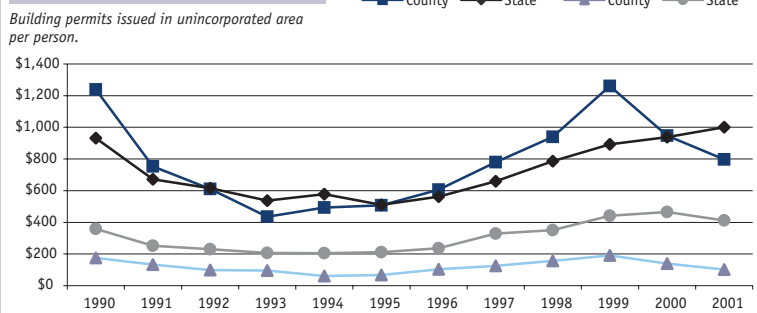
	County	State
Total workforce (2001)	1,424,900	17,362,300
High school graduates (2001)	26,158	316,124
High school dropout rate (2000-01)	2.0%	2.8%
% of grad's qualified for UC/CSU (2001)	38.5%	35.6%
Average SAT score (2001)	1,018	1,006
Average wage per job (2000)	\$ 36,644	\$ 40,367
Housing demand* (2001)	1.33	1.82
Home ownership rate (2000)	55.4%	56.9%
% of pop. below poverty (1999)	12.4%	14.2%
Average cost of care, infant age 0-2 (2001)	\$ 9,035	\$ 9,404
Average cost of care, child age 2-5 (2001)	\$ 6,172	\$ 6,394

\*ratio of change in workforce to new units of housing (based on building permits issued)

### UNEMPLOYMENT AND INCOME



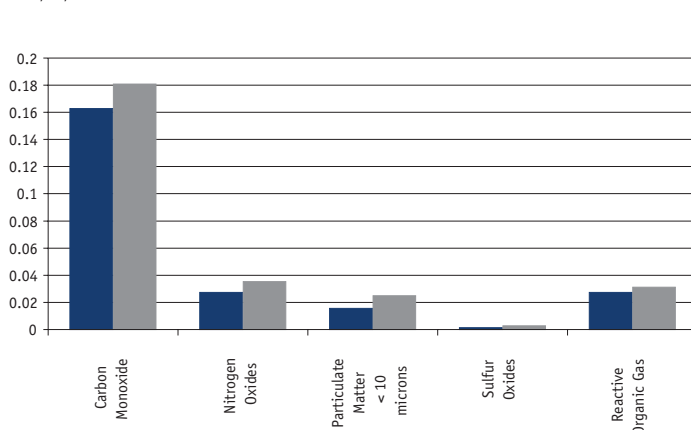
### VALUE OF NEW CONSTRUCTION



## ENVIRONMENT

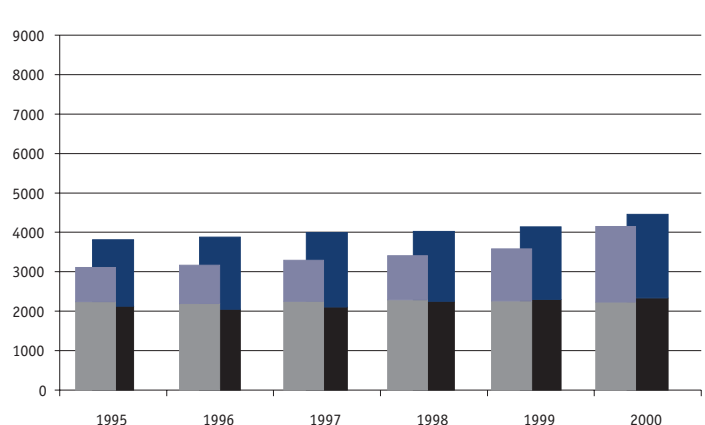
### TONS OF AIR POLLUTION EMISSIONS

2001 per person



### SOLID WASTE

Pounds of solid waste generated per person, portions landfilled or diverted (e.g. recycled)



**PUBLIC FINANCE**

**Fiscal Year 1999-00:**

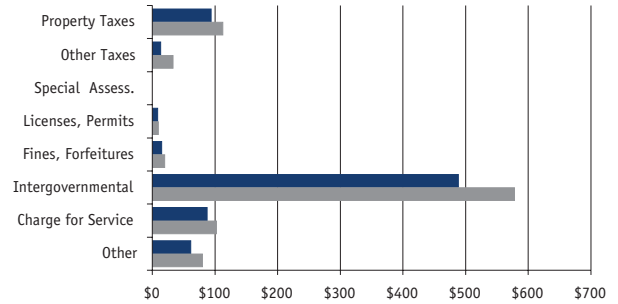
County Revenues:	Total	- Per Capita -		Rank
		County	State Avg.	
Property Taxes	\$ 276,658,186	\$ 94.01	\$ 112.61	42
Other Taxes	\$ 39,297,384	\$ 13.35	\$ 33.12	57
Special Assess.	\$ 0	\$ 0.00	\$ 0.50	15
Licenses, Permits	\$ 25,625,127	\$ 8.71	\$ 9.67	48
Fines, Forfeitures	\$ 43,603,127	\$ 14.82	\$ 19.97	45
Intergovernmental	\$ 1,437,478,594	\$ 488.44	\$ 578.00	47
Charge for Service	\$ 257,476,929	\$ 87.49	\$ 102.37	34
Other	\$ 180,577,881	\$ 61.36	\$ 80.16	35
<b>Total</b>	<b>\$ 2,260,717,228</b>	<b>\$ 768</b>	<b>\$ 1,066</b>	<b>58</b>

**County Expenditures:**

General	\$ 287,861,693	\$ 97.81	\$ 88.39	35
Public Protection	\$ 655,052,591	\$ 222.58	\$ 266.56	54
Pub. Ways & Fac.	\$ 59,743,901	\$ 20.30	\$ 30.07	53
Health	\$ 354,507,847	\$ 120.46	\$ 153.49	44
Sanitation	\$ 3,850,485	\$ 1.31	\$ 0.50	10
Public Assistance	\$ 684,640,872	\$ 232.63	\$ 305.29	40
Education	\$ 13,341,501	\$ 4.53	\$ 8.31	51
Rec. & Cultural Srv.	\$ 11,097,943	\$ 3.77	\$ 8.02	31
Debt Service	\$ 120,278,009	\$ 40.87	\$ 29.06	11
<b>Total</b>	<b>\$ 2,190,374,842</b>	<b>\$ 744</b>	<b>\$ 890</b>	<b>56</b>

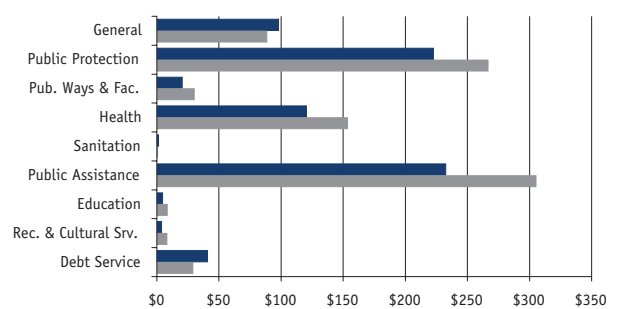
**COUNTY REVENUES**

1999-2000 per person



**COUNTY EXPENDITURES**

1999-2000 per person



**SOCIAL SERVICES**

**Hospital admissions for drug or alcohol treatment, 2000**

County total	11,473
per 1,000 people	3.90
State average per 1,000 people	4.74

**Mental health programs clients served, fiscal year 1999-00**

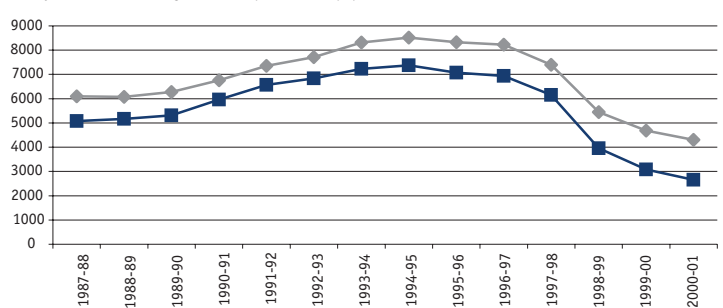
County total	42,325
per 1,000 people	14.38
State average per 1,000 people	14.36

**Live births with late (3rd trimester) or no prenatal care, 2001**

County percent	3.3%
State average	2.9%

**AFDC/GALWORKS RECIPIENTS**

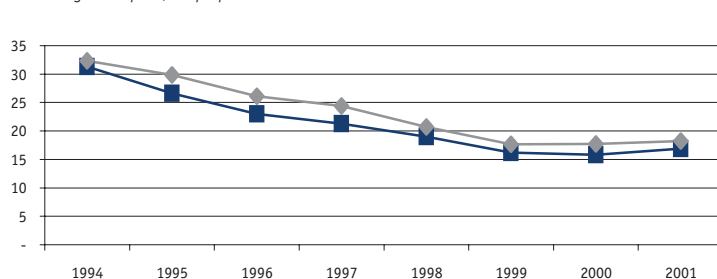
Fiscal years 1987-88 through 2000-01, per 100,000 population



**PUBLIC SAFETY**

**CRIMES REPORTED**

1994 through 2001 per 1,000 people



**2001 data, except where otherwise specified:**

	County	State
Violent crimes per 1,000 people	4.86	5.97
Property crimes per 1,000 people	12.03	12.23
Arrests per 1,000 people	34.92	39.19
% of trials resulting in conviction (2000)	87%	84%
Adult Probation cases per 1,000 people	7.93	9.32
Law enforcement expenditures per person (fiscal year 1999-2000)	\$ 202	\$ 240

**CIVIC PARTICIPATION**

	County	State
Percent of registered voters who voted in the 2002 General Election	48.4	49.6
Percent of residents eligible to vote who voted in the 2002 General Election	35.8	35.4
Percent of 2001 income tax returns with voluntary contributions	1.0	0.9