

Imperial County

POPULATION

Population Trend:

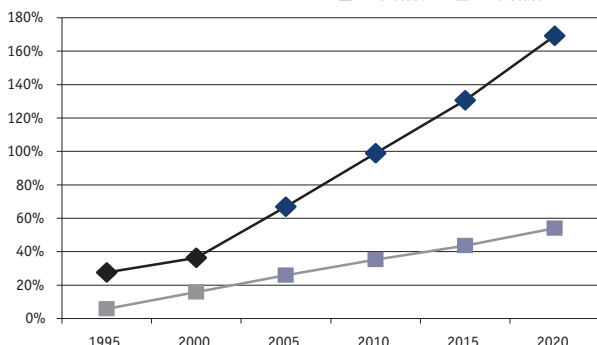
1990 Population	109,303
Portion of pop. living in unincorporated area	25.0%
2000 Population	149,000
Portion of pop. living in unincorporated area	24.2%
Population change, 1990 to 2000	36.3%
Projected population change, 2000 to 2010	46.0%

Population by Age, 2003:

	under 18	18-34	35-49	50-64	65+	Average Age
County	32.5%	29.3%	17.7%	11.2%	9.4%	31.3
State	28.4%	23.1%	23.2%	15.2%	10.2%	36.7

POPULATION TREND

Percent change relative to 1990



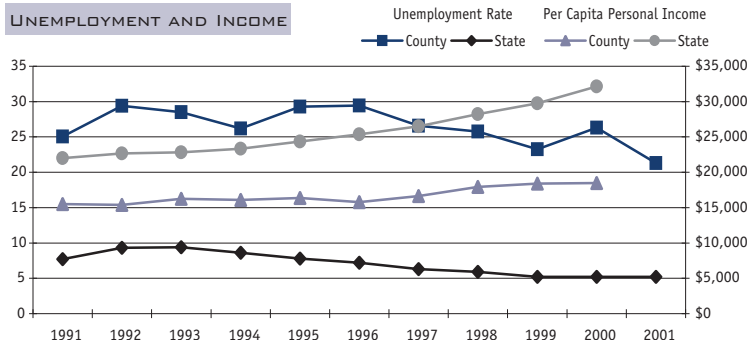
ECONOMY

Workforce Characteristics:

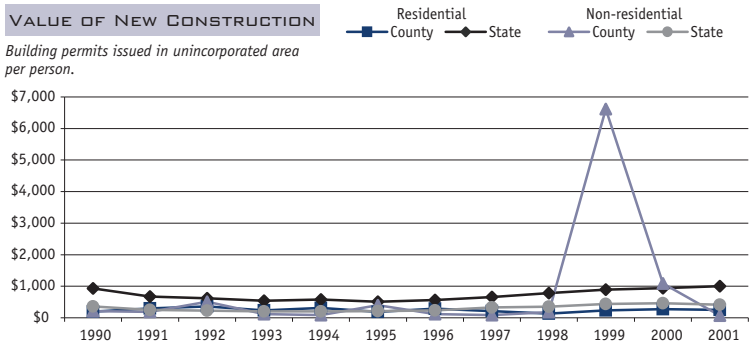
	County	State
Total workforce (2001)	55,500	17,362,300
High school graduates (2001)	1,921	316,124
High school dropout rate (2000-01)	1.0%	2.8%
% of grad's qualified for UC/CSU (2001)	16.9%	35.6%
Average SAT score (2001)	868	1,006
Average wage per job (2000)	\$ 24,276	\$ 40,367
Housing demand* (2001)	-3.97	1.82
Home ownership rate (2000)	58.3%	56.9%
% of pop. below poverty (1999)	22.6%	14.2%
Average cost of care, infant age 0-2 (2001)	\$ 5,773	\$ 9,404
Average cost of care, child age 2-5 (2001)	\$ 4,678	\$ 6,394

*ratio of change in workforce to new units of housing (based on building permits issued)

UNEMPLOYMENT AND INCOME



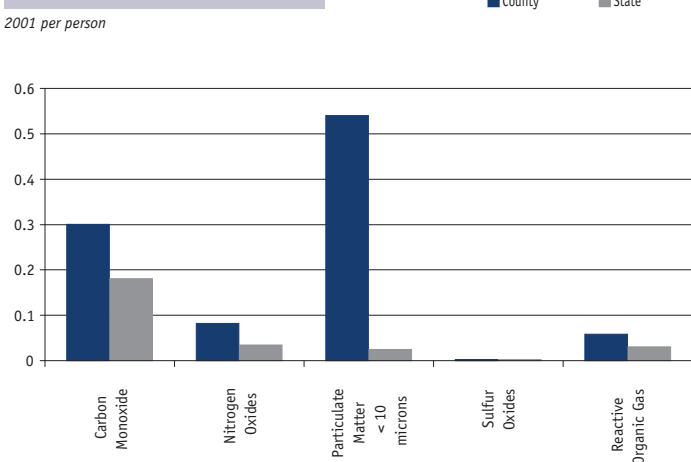
VALUE OF NEW CONSTRUCTION



ENVIRONMENT

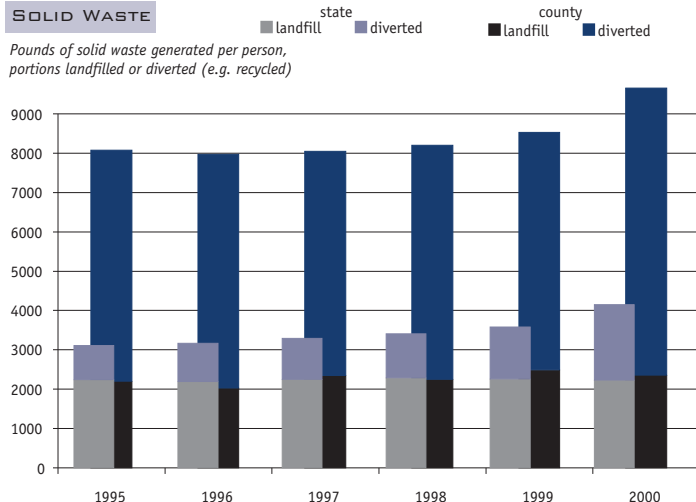
TONS OF AIR POLLUTION EMISSIONS

2001 per person



SOLID WASTE

Pounds of solid waste generated per person, portions landfilled or diverted (e.g. recycled)



PUBLIC FINANCE

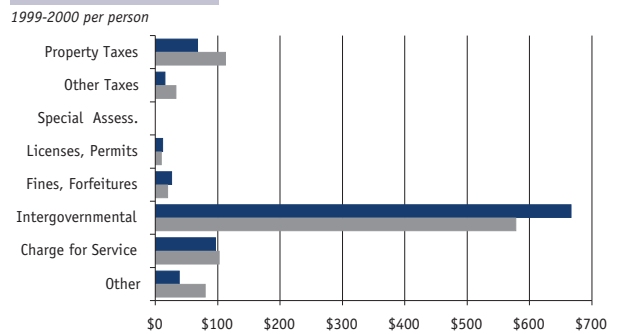
Fiscal Year 1999-00:

County Revenues:	Total	- Per Capita -		Rank
		County	State Avg.	
Property Taxes	\$ 10,469,988	\$ 67.75	\$ 112.61	52
Other Taxes	\$ 2,371,369	\$ 15.34	\$ 33.12	54
Special Assess.	\$ 0	\$ 0.00	\$ 0.50	15
Licenses, Permits	\$ 1,836,546	\$ 11.88	\$ 9.67	40
Fines, Forfeitures	\$ 4,018,298	\$ 26.00	\$ 19.97	15
Intergovernmental	\$ 102,983,250	\$ 666.35	\$ 578.00	24
Charge for Service	\$ 14,931,871	\$ 96.62	\$ 102.37	29
Other	\$ 5,929,827	\$ 38.37	\$ 80.16	52
Total	\$ 142,541,149	\$ 922	\$ 1,066	45

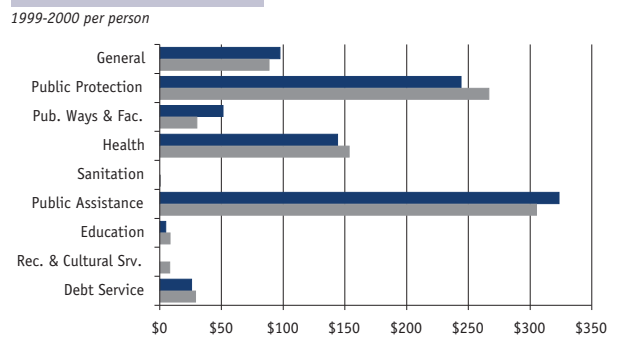
County Expenditures:

General	\$ 15,059,177	\$ 97.44	\$ 88.39	32
Public Protection	\$ 37,718,347	\$ 244.05	\$ 266.56	41
Pub. Ways & Fac.	\$ 7,924,392	\$ 51.27	\$ 30.07	32
Health	\$ 22,277,891	\$ 144.15	\$ 153.49	31
Sanitation	\$ 0	\$ 0.00	\$ 0.50	14
Public Assistance	\$ 49,979,673	\$ 323.39	\$ 305.29	23
Education	\$ 745,222	\$ 4.82	\$ 8.31	49
Rec. & Cultural Srv.	\$ 12,970	\$ 0.08	\$ 8.02	50
Debt Service	\$ 3,962,790	\$ 25.64	\$ 29.06	21
Total	\$ 137,680,462	\$ 891	\$ 890	43

COUNTY REVENUES



COUNTY EXPENDITURES



SOCIAL SERVICES

Hospital admissions for drug or alcohol treatment, 2000

County total	192
per 1,000 people	1.24
State average per 1,000 people	4.74

Mental health programs clients served, fiscal year 1999-00

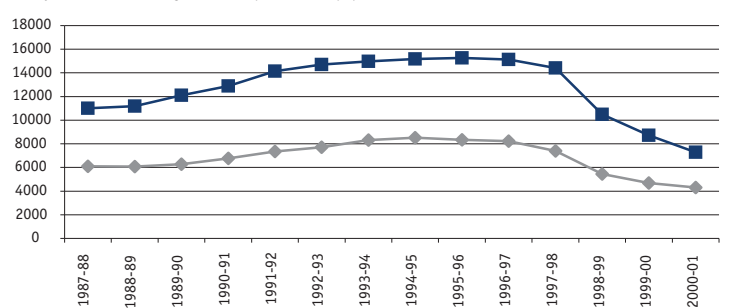
County total	2,852
per 1,000 people	18.45
State average per 1,000 people	14.36

Live births with late (3rd trimester) or no prenatal care, 2001

County percent	7.7%
State average	2.9%

AFDC/GALWORKS RECIPIENTS

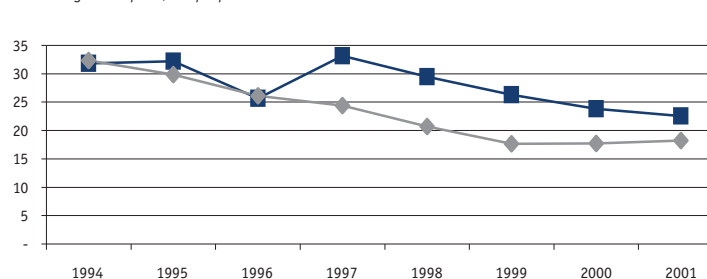
Fiscal years 1987-88 through 2000-01, per 100,000 population



PUBLIC SAFETY

CRIMES REPORTED

1994 through 2001 per 1,000 people



2001 data, except where otherwise specified:

	County	State
Violent crimes per 1,000 people	4.59	5.97
Property crimes per 1,000 people	17.99	12.23
Arrests per 1,000 people	46.15	39.19
% of trials resulting in conviction (2000)	77%	84%
Adult Probation cases per 1,000 people	10.22	9.32
Law enforcement expenditures per person (fiscal year 1999-2000)	\$ 141	\$ 240

CIVIC PARTICIPATION

	County	State
Percent of registered voters who voted in the 2002 General Election	43.8	49.6
Percent of residents eligible to vote who voted in the 2002 General Election	29.8	35.4
Percent of 2001 income tax returns with voluntary contributions	0.4	0.9