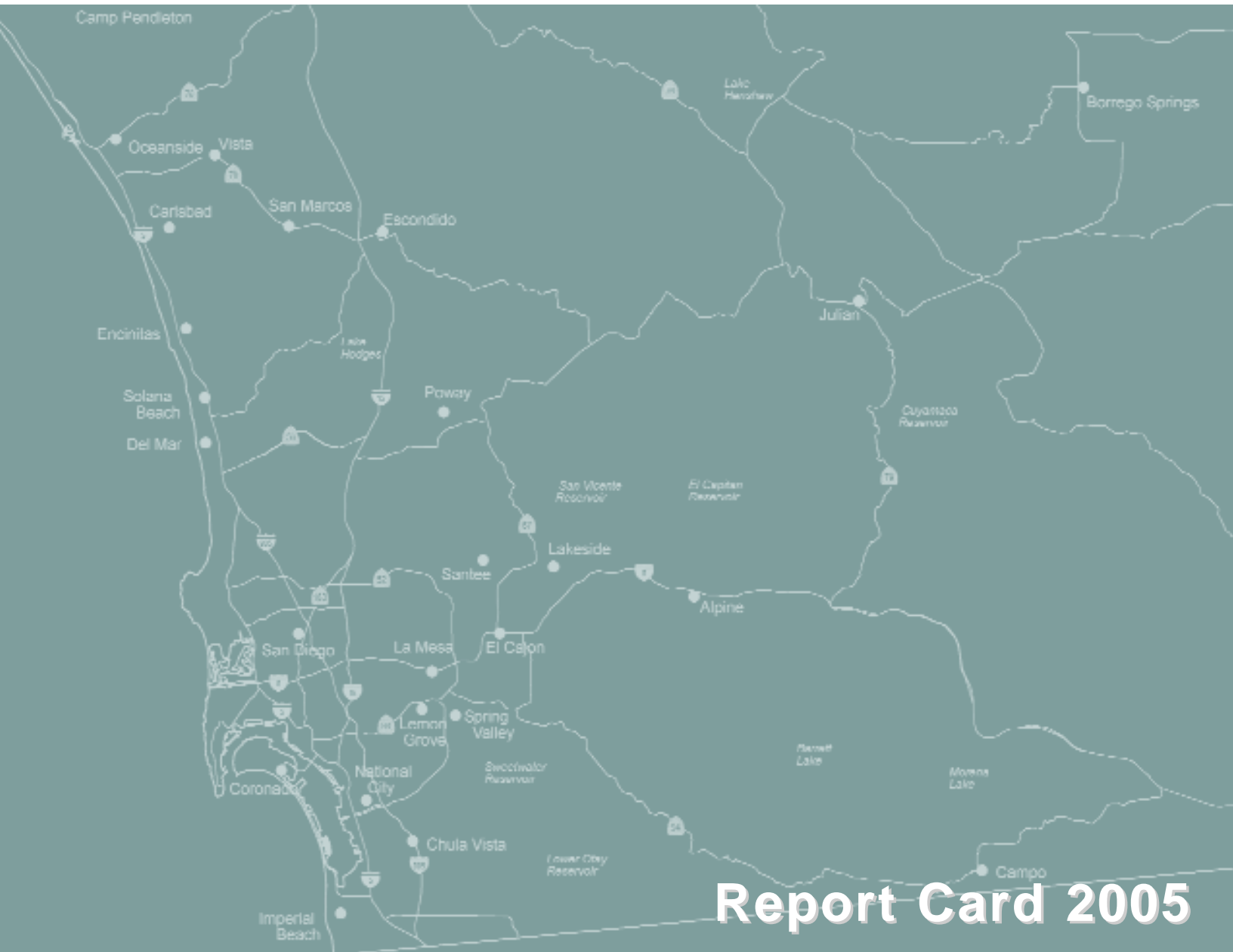


# SAN DIEGO COUNTY CHILD AND FAMILY HEALTH AND WELL-BEING



**Report Card 2005**

**San Diego County Child and Family  
Health & Well-Being  
Report Card 2005**



**COUNTY OF SAN DIEGO BOARD OF SUPERVISORS**

**District 1**

Greg Cox

**District 2**

Dianne Jacob

**District 3**

Pam Slater-Price, Chairwoman

**District 4**

Ron Roberts

**District 5**

Bill Horn, Vice Chairman

**Chief Administrative Officer**

Walter F. Ekard

**Health and Human Services Agency**

Jean M. Shepard, Director

**The Report Card is available in electronic format at [www.sdcountyreportcard.org](http://www.sdcountyreportcard.org)**



# TABLE OF CONTENTS

<b>List of Figures</b> .....	4
<b>Executive Summary</b> .....	5
<b>Introduction</b>	
Understanding This Report Card .....	6
Background about San Diego County, California and the Nation .....	7
<b>Summary Table I: Annual Comparisons.</b> .....	9
<b>Summary Table II: Comparisons of the County, State, and Nation</b> .....	11
<b>Outcomes and Measures</b> .....	13
<b>Economic Security</b> .....	14
<b>Good Health</b> .....	17
<b>Appropriate Access to Services</b> .....	24
<b>A Safe Environment</b> .....	28
<b>Educational Achievement</b> .....	34
<b>Appendix</b>	
Definitions and Data Sources .....	39
Acknowledgements .....	42
References .....	43

# LIST OF FIGURES

<b>Introduction</b> . . . . .	<b>6</b>
Population Pie Charts . . . . .	8
Summary Table I: Annual Comparisons . . . . .	9
Summary Table II: Comparisons of the County, State, and the Nation . . . . .	11
<b>Economic Security</b> . . . . .	<b>14</b>
Percent Unemployed . . . . .	14
Percent of Children and Youth Living in Poverty . . . . .	15
Rate of Children and Youth Receiving CalWORKS Assistance . . . . .	16
<b>Good Health</b> . . . . .	<b>17</b>
Percent of Babies Born Low Birthweight . . . . .	17
Percent of Babies Born Low Birthweight, by Race/Ethnicity . . . . .	18
Percent of Babies Born Low Birthweight, by Region . . . . .	18
Rate of Births to Teens . . . . .	19
Rate of Births to Teens, by Race/Ethnicity . . . . .	19
Rate of Births to Teens, by Region . . . . .	19
Percent of Students Who Reported a Suicide Attempt . . . . .	20
Percent of Students Who Reported a Suicide Attempt, by Race/Ethnicity . . . . .	20
Rate of Youth Hospitalized for Self-Inflicted Non-Fatal Injuries . . . . .	21
Percent of Students Who Reported Smoking Cigarettes . . . . .	21
Percent of Students Who Reported Drinking Alcohol . . . . .	22
Percent of Students Who Reported Marijuana Use . . . . .	22
Percent of Students Who Reported Smoking Cigarettes, by Race/Ethnicity . . . . .	22
Percent of Students Who Reported Drinking Alcohol, by Race/Ethnicity . . . . .	23
Percent of Students Who Reported Marijuana Use, by Race/Ethnicity . . . . .	23
<b>Appropriate Access to Services</b> . . . . .	<b>24</b>
Percent of Households that Reported Adequate Access to Childcare . . . . .	25
Percent of Young Children Who Are Adequately Immunized . . . . .	25
Percent of Young Children Who Are Adequately Immunized, by Race/Ethnicity . . . . .	26
Percent of Children and Youth with Health Insurance . . . . .	27
Percent of Households with Children and Youth with Health Insurance, by Race/Ethnicity . . . . .	27
Percent of Households with Children and Youth with Health Insurance, by Region . . . . .	27
<b>A Safe Environment</b> . . . . .	<b>28</b>
Rate of Substantiated Cases of Child Abuse/Neglect . . . . .	29
Rate of Substantiated Cases of Child Abuse/Neglect, by Race/Ethnicity . . . . .	29
Rate of Substantiated Cases of Child Abuse/Neglect, by Region . . . . .	29
Rate of Domestic Violence Reports . . . . .	30
Rate of Domestic Violence Reports, by Region . . . . .	30
Rate of Court Cases Filed Against Youth Offenders . . . . .	31
Rate of Violent Crime Victimization, Ages 0 - 11 and 12 - 17 . . . . .	32
Rate of Unintentional Injury Hospitalizations and Deaths . . . . .	33
Rate of Unintentional Injury Hospitalizations and Deaths, by Race/Ethnicity . . . . .	33
Motor Vehicle Injuries and Deaths Related to Alcohol, Ages 0 - 15 and 16 - 20 . . . . .	33
<b>Educational Achievement</b> . . . . .	<b>34</b>
Percent of Public School Students Attending School Per Day, Grades K-12 . . . . .	34
Rate of High School Seniors Who Graduate Annually . . . . .	35
Rate of High School Seniors Who Graduate Annually, by Race/Ethnicity . . . . .	36
Percent Scoring Proficient or Advanced on the English Language Arts Test for Grades 3, 8, 11 . . . . .	36
Percent Scoring Proficient or Advanced on the English Language Arts Test for Grades 3, 8, 11 by Race/Ethnicity . . . . .	37
Percent of Public High School Graduates Enrolled in College . . . . .	37

# EXECUTIVE SUMMARY

The 2005 San Diego County Child and Family Health & Well-Being Report Card is the seventh in an annual series of reports that provides a snapshot of the overall health and well-being of San Diego's children and families. The Report Card is a powerful information and monitoring tool that can be used by policymakers, advocacy organizations, community members and service providers to inform discussions about issues related to the children and families in our community.

In 1998, the County Board of Supervisors initiated the Report Card in order to monitor the health and well-being of children and their families in San Diego County.<sup>1</sup> It is intended that the Report Card's data be used in decision-making processes, including resource allocation decisions, so that efforts to help improve the health and well-being of children are effectively leveraged across public, non-profit and private sectors. In doing this, progress on behalf of children can be achieved and sustained.

The Report Card consists of 25 measures that monitor the overall health and well-being of children and families and are organized around five outcomes:

- Economic Security
- Good Health
- Appropriate Access to Services
- A Safe Environment
- Educational Achievement

For the 2005 edition, we have changed the Percent of Public High School Seniors that Took the SAT in San Diego County measure to Percent of High School Graduates Enrolled in Community College, California State University, and University of California Systems, to better demonstrate the number of youth who actually take advantage of higher education opportunities.

The San Diego chapter of the United Way did not conduct its annual telephone survey this year. CHKS data is collected biennially, and was not available for this edition of the Report Card.

Testing for statistical significance was not available for this year's Report Card. Measures with 'Notable' changes indicate that the change is five percent or greater.

## RESULTS

The following measures show overall improvement over the most recent 3-5 year period.

- CalWORKs Assistance
- Births to Teens (Ages 15-17)
- Self Inflicted Non-Fatal Hospitalizations (Ages 13-18)

- Substantiated Cases of Child Abuse/Neglect (overall rate and rate for Blacks)
- Unintentional Injury Hospitalizations and Deaths of Children and Youth
- Court Cases Filed Against Youth Offenders
- Violent Crime Victimization
- Motor Vehicle Injury and Death Due to Alcohol (Ages 0-15)
- Student Scores on the English Language Arts Test (Grades 8 and 11)

The following measures are areas of concern because the trend has been in a negative direction.

- Unemployment
- Children in Poverty
- Students Who Reported a Suicide Attempt
- Percent of Babies with Low Birth Weight
- Student Scores on the English Language Arts Test (Grade 3)

For many measures, the trend is holding steady and there is little or no indication of change.

- Immunizations in Young Children
- Motor Vehicle Injury and Death Due to Alcohol (Ages 16-20)
- Domestic Violence
- Student Attendance in School
- High School Graduates Who Enrolled in College\*\*

The following measures have are still under development or it is too early to determine a trend.

- Dental Usage in the Past Twelve Months
- Children and Youth with Health Insurance
- Substantiated Cases of Child Abuse/Neglect (rate for Native Americans)
- High School Graduation Rate\*

New data for the following measures were not available for the 2005 Report Card.

- Youth Who Reported Cigarette, Alcohol, Marijuana Use
- Adequate Access to Childcare

\* The graduation rates are reported in accordance with the formula negotiated with the United States Department of Education for No Child Left Behind. The No Child Left Behind graduation rate is calculated by dividing the number of high school graduates by the sum of dropouts for grades 9-12 in consecutive years, plus the number of high school graduates.

\*\*Percentage of high school graduates that enroll as first-time freshmen under 19 years of age in community college, California State University, and University of California systems.

# INTRODUCTION

## UNDERSTANDING THIS REPORT CARD

In order to effectively use this Report Card, it is important to understand what is being reported. The following provides background information to help.

The Report Card compiles existing information obtained from a wide variety of sources, including County, State, and federal government agencies, academic institutions as well as advocacy and charitable organizations. Previous editions of the Report Card are available on the County's web site at [www.sdcountyreportcard.org](http://www.sdcountyreportcard.org).

Although the best available data were used, all data have limitations. Small changes in procedures and practices made by organizations that collect and record the data, conduct surveys, and make population estimates each have an effect on the validity and reliability of the data and our reported results. These changes are noted to the extent known. Also, increased media attention - such as a high-profile domestic violence case - could potentially cause an increase in the number of reported cases although there was not a change in the true underlying level of domestic violence in the County. It is beyond the scope of this Report Card to analyze the multiple factors that influence the trends for each measure.

Most of the data are in the form of rates. A rate is a measure of some outcome or condition per certain number of a population, during a specific time period. A percent is also a type of rate. Using a rate allows the reader to compare across time, geographic areas and different groups while adjusting for differences in population sizes. The actual or estimated raw numbers of the events or conditions for the current San Diego County data are also provided.

San Diego County rates are displayed in charts. These data are also provided in Summary Table I (see pages 9-10). When

possible, these charts contain up to 10 years of data. However, some sources make available fewer than 10 years of data or have only recently begun to publish annual data. When it is noted that a measure increased or decreased "significantly" over time, it is because the change can be considered statistically significant.

When available, state and/or national comparison data for the most current year are presented to help the reader understand how San Diego County is doing in comparison to California and/or the nation. These comparisons are also displayed in Summary Table II (see pages 11-12).

Graphs are used to display measures by race/ethnicity. The availability of race/ethnicity data determined when this comparison could be made. The race/ethnicity categories used in the Report Card reflect how the source of the data chose to present or collect the data, and categories used vary by measure.

When data are available to allow comparisons across the different Health and Human Services Agency geographic service regions, regional rates and maps are provided. Geographic analyses were performed as multi-year averages, which explains why the overall County rates that appear in the maps often do not match the County rate in the trend charts.

The San Diego County and sub-regional population estimates for 2002-2004 used in this Report Card have been revised to reflect the results of the 2000 Census. Rates for these years may differ slightly from the results that appeared in previous editions. In general, the population estimates based on the 2000 Census were lower than those previously forecast and, consequently, rates derived from Census 2000 populations are usually higher than would be the case using the old numbers. The overall trends were not affected. Population estimates used to calculate rates for the 1990's were not revised to reflect the results of the 2000 Census unless specifically noted.

## BACKGROUND ABOUT SAN DIEGO COUNTY, CALIFORNIA, AND THE NATION

### Population

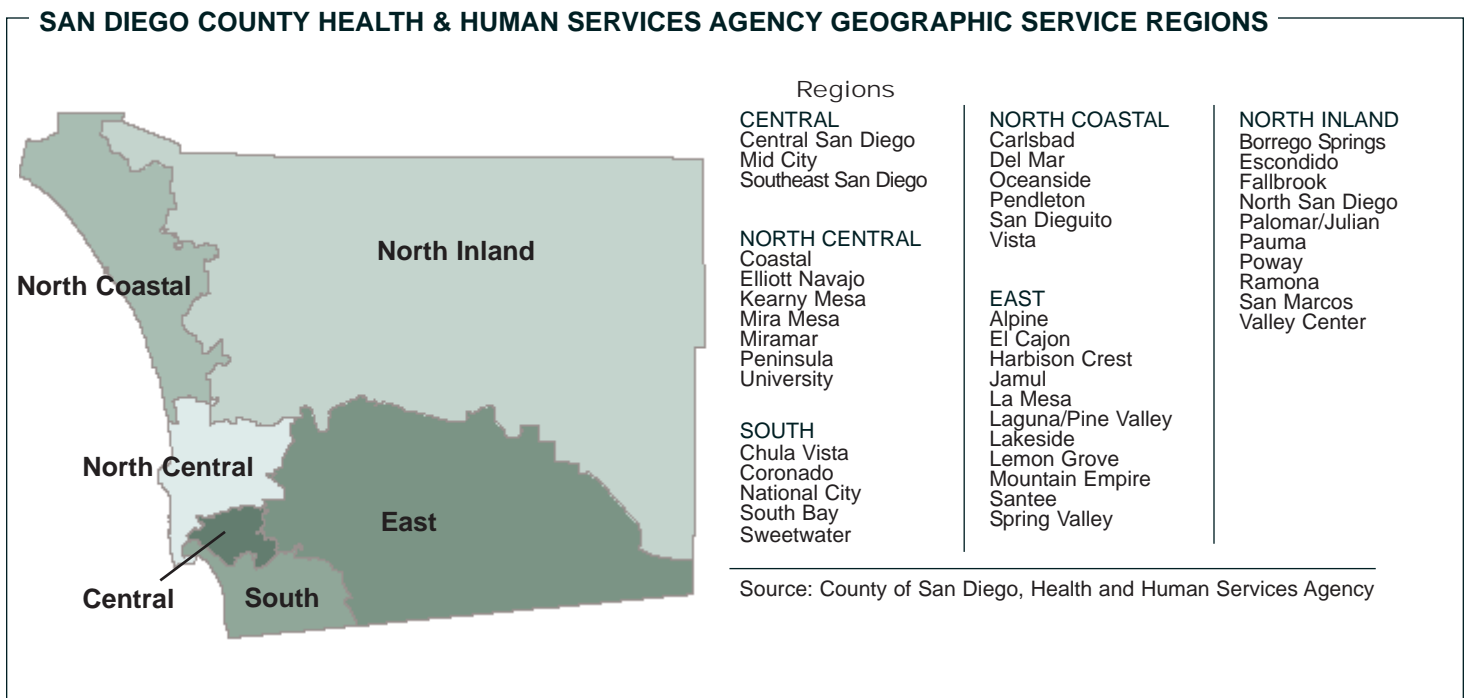
San Diego County is the third most populated county in California and the sixth most populated county in the United States. The State of California is the most populated state in the nation. The 2004 estimated population of San Diego County was more than 2.8 million with approximately 761,659 people (27.2%) under age 18. Within the entire State of California there were an estimated 35.9 million people. Over 9.4 million (26.1%) of these people were under age 18. In the nation, the total population was estimated at over 293 million, of which approximately 73 million (25%) were under age 18.

### Race/Ethnicity

The estimated race/ethnic composition of San Diego County, California and the Nation in 2004 can be viewed in the charts on the next page. The race/ethnicity composition under 18 years of age is also provided.

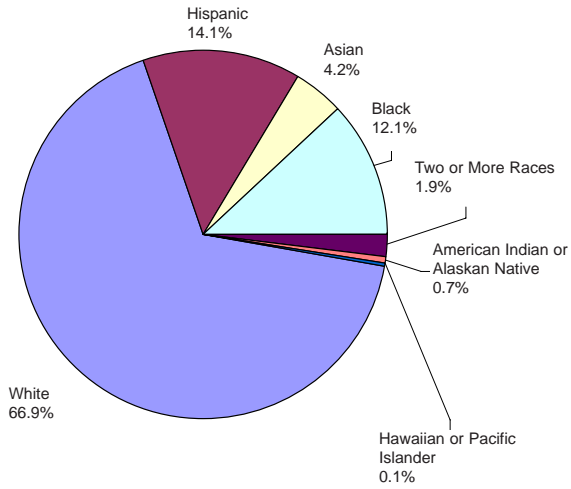
### Geographic Boundaries

The Health and Human Services Agency has divided the County of San Diego into six geographic service regions as shown in the map below. These six areas are based on groupings of ZIP codes. The communities listed under each region fall approximately within the listed region.



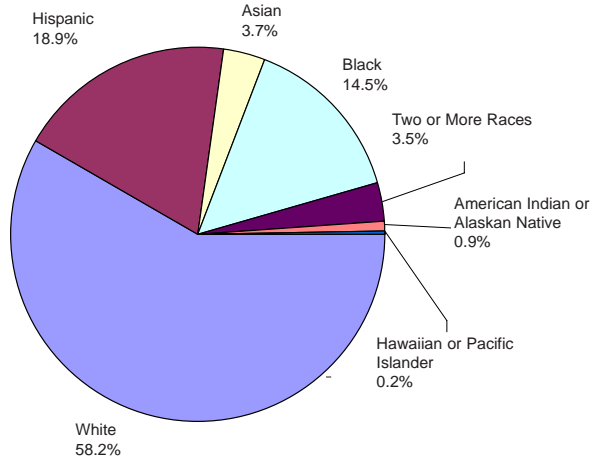


**UNITED STATES POPULATION BY RACE/ETHNICITY**



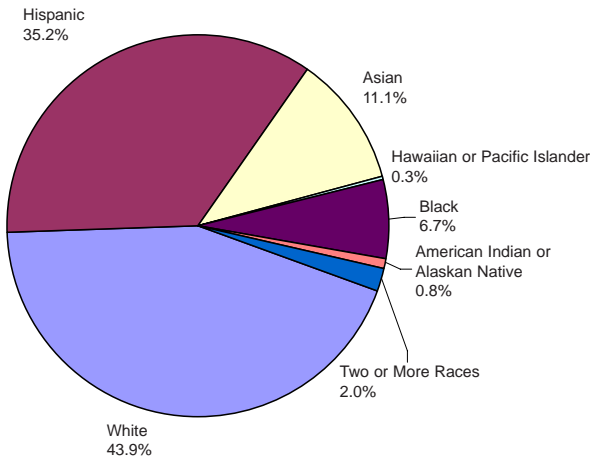
Source: U.S. Census Bureau, 2005

**UNITED STATES POPULATION UNDER 18 BY RACE/ETHNICITY**



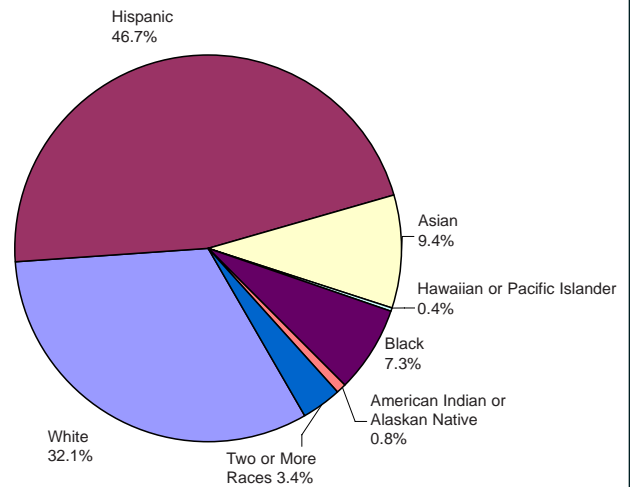
Source: U.S. Census Bureau, 2005

**CALIFORNIA POPULATION BY RACE/ETHNICITY**



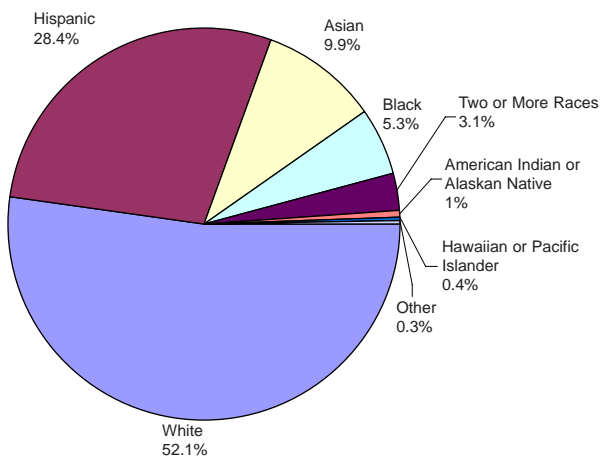
Source: California Department of Finance, 2005

**CALIFORNIA POPULATION UNDER 18 BY RACE/ETHNICITY**



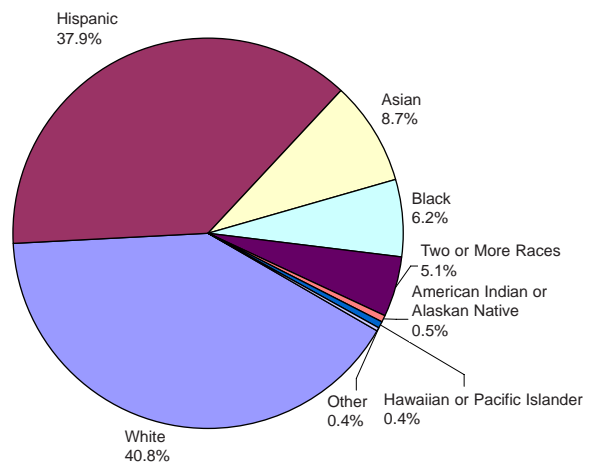
Source: California Department of Finance, 2005

**SAN DIEGO COUNTY POPULATION BY RACE/ETHNICITY**



Source: San Diego Association of Governments, 2005

**SAN DIEGO COUNTY POPULATION UNDER 18 BY RACE/ETHNICITY**



Source: San Diego Association of Governments, 2005

# Child and Family Health and Well-Being 2005

## REPORT CARD SUMMARY TABLE I ANNUAL COMPARISONS

<b>Economic Security</b>	1995	1996	1997	1998	1999	2000	2001	2002	2003	2004
· Percent unemployed	6.4	5.3	4.2	3.5	3.1	3.0	3.2	4.3	4.3	4.7
· Percent of children and youth living in poverty	22.7		22.0	20.2	18.2	16.3	14.8**	17.5	16.5	16.6
· Rate of children and youth receiving CalWORKS assistance (per 1,000) <sup>c</sup>	193.3	185.7	168.7	139.3	112.2	91.5	80.6	74.5	71.9	65.0
<b>Good Health</b>										
· Percent of babies with low birthweight	5.6	5.8	5.8	6.0	5.9	6.0	6.0	6.1	6.1	6.5
· Rate of births to teens (per 1,000 girls ages 15-17)	33.8	34.6	29.1	27.9	27.1	24.3	21.7	20.0	18.9	18.7
· Percent of youth who reported they attempted suicide in the previous 12 months (YRBS survey) <sup>¥</sup>	10.0		9.5		9.2		10.5		10.9	10.0
· Rate of youth (ages 13-18) hospitalized for self-inflicted non-fatal injuries (per 10,000)	7.9	8.6	7.6	8.2	8.2	9.9	11.4	9.5	6.4	
· Percent of youth who reported substance use in past 30 days (CHKS survey)**										
- cigarette use					15.5		11.4		11.4	
- alcohol use					33.2		27.4		28.9	
- marijuana use					13.5		12.6		13.4	
<b>Appropriate Access to Services</b>										
· Percent of households with children (ages 0-12) that reported adequate access to childcare					76.2	70.1	70.9	69.1	75.5	
· Percent of young children who are adequately immunized (19-36 months)	68.9 <sup>†</sup> 74.8 <sup>○</sup>	73.6 <sup>†</sup> 75.7 <sup>○</sup>	79.6 <sup>†</sup> 79.0 <sup>○</sup>	77.1 <sup>†</sup> 79.5 <sup>○</sup>	87.0 <sup>†</sup> 76.6 <sup>○</sup>	86.4 <sup>†</sup> 77.5 <sup>○</sup>	no survey <sup>†</sup> 80.8 <sup>○</sup>	84.8 <sup>†</sup> 79.0 <sup>○</sup>	88.9 <sup>†</sup> 83.1 <sup>○</sup>	85.7 80.0
· Percent of children and youth with health insurance					85.9 <sup>Ⓐ</sup>	88.8 <sup>Ⓐ</sup>	88.5 88.7 <sup>Ⓐ</sup>	85.4 <sup>Ⓐ</sup>	89.5	
· Percent of households with a child (ages 1 - 18) that used dental care services for cavity and/or emergency treatment in the past 12 months							76.3		82.1	
<b>A Safe Environment</b>										
· Rate of substantiated cases of child abuse/neglect (per 1,000)				18.0	17.5	16.4*	16.1	15.0	13.8	13.0
· Rate of domestic violence reports (per 1,000 households)		27.6	25.0	21.3	20.6	20.9	20.5	20.8	20.9	19.7
· Rate of court cases filed against youth offenders (per 1,000 ages 10-17)	23.1	22.5	23.2	23.0	21.4	18.5	18.4	18.7	15.2	15.4

**Note:** Children and Youth are ages 0-17 unless otherwise noted.

Ⓒ Fiscal or school year

¥ Surveyed high school students in San Diego Unified School District only - data available biennially (Youth Risk Behavior Survey)

\*\* Surveyed 7<sup>th</sup>, 9<sup>th</sup> and 11<sup>th</sup> graders in 33 of 42 school districts in San Diego County - data available biennially (California Healthy Kids Survey)  
California Health Interview Survey reported by UCLA

Ⓐ United Way of San Diego County

† HHS Survey

○ CDC Survey

\* Change in definition from previous years

\*\* Change in source for 2001-2003

## Child and Family Health and Well-Being 2005

### REPORT CARD SUMMARY TABLE I ANNUAL COMPARISONS, CONT.

A Safe Environment, cont.	1995	1996	1997	1998	1999	2000	2001	2002	2003	2004
· Rates of violent crime victimization of children and youth (per 10,000)										
- ages 0-11					7.8	9.0	7.0	5.9	6.8	6.6
- ages 12-17					85.3	72.9	71.3	67.1	63.4	68.1
· Rates of unintentional injury hospitalizations and deaths of children and youth (per 100,000 ages 0-18)	379.2	348.8	344.7	342.3	341.6	355.6	314.7	318.5	313.0	
· Rate of children and youth injured or killed in alcohol-related motor vehicle crashes (per 100,000)										
- ages 0-15		26.5	27.0	29.8	24.4	28.9	22.8	22.4	21.5	23.4
- ages 16-20		263.9	215.4	224.6	239.6	234.2	253.1	230.7	224.1	227.4

Educational Achievement										
· Percent of students attending school per day (K-12) <sup>c</sup>	93.5	93.4	93.7	93.9	94.5	94.1	93.8	94.5	94.9	94.7
· Rate of high school seniors who graduate annually <sup>c</sup>	82.9	82.9	84.4	85.2	87.0	87.3	89.0	89.4	89.5	84.1
· Percent of students scoring proficient or advanced on the English Language Arts test of the California Standards Tests <sup>c</sup>										
- grade 3								39	37	37
- grade 8								36	37	44
- grade 11								36	36	38
· Percent of high school graduates who enroll in college	61.9	63.2	60.6	61.9	52.6	49.3	49.8	53.5	51.4	51.6

**Note:** Children and Youth are ages 0-17 unless otherwise noted.

<sup>c</sup> Fiscal or school year

# Child and Family Health and Well-Being 2005

## REPORT CARD SUMMARY TABLE II COMPARISONS OF THE COUNTY, STATE, AND NATION

MEASURE	San Diego County	California	U.S.	Year of Data
<b>Economic Security</b>				
· Percent unemployed	4.7	6.2	4.9	2004
· Percent of children and youth living in poverty	16.6	18.9	18.4	2004
· Rate of children and youth receiving CalWORKs assistance (per 1,000) <sup>Ⓒ</sup>	71.9	93.5	NA	2002/03
<b>Good Health</b>				
· Percent of babies with low birthweight	6.5	NA	NA	2004
· Rate of births to teens (per 1,000 girls ages 15-17)	18.7	NA	NA	2004
· Percent of youth who reported they attempted suicide in previous 12 months (YRBSS survey) <sup>¥</sup>	10.0	NA	8.5	2004
· Rate of youth (ages 13-18) hospitalized for self-inflicted non-fatal injuries (per 10,000)	6.4	8.6	NA	2003
· Percent of youth who reported substance use in past 30 days (CHKS survey)**				
- cigarette use	11.4	NA	NA	2003
- alcohol use	28.9	NA	NA	
- marijuana use	13.4	NA	NA	
<b>Appropriate Access to Services</b>				
· Percent of households with children (ages 0-12) that reported adequate access to childcare	NA*	NA	NA	2004
· Percent of young children who are adequately immunized (ages 19 up to 36 months)	85.7 † 80.0 <sup>○</sup>	NA 84.1 <sup>○</sup>	NA 83.5 <sup>○</sup>	2004 2004
· Percent of children and youth with health insurance	89.5 NA <sup>±</sup>	92.9 NA <sup>±</sup>	NA NA <sup>±</sup>	2003
· Percent of households with a child (ages 1 - 18) that used dental care services for cavity and/or emergency treatment in the past 12 months	82.1	79.5	NA	2003
<b>A Safe Environment</b>				
· Rate of substantiated cases of child abuse/neglect (per 1,000)	13.0	11.5	NA	2004
· Rate of domestic violence reports (per 1,000 households)	19.7	NA	NA	2004
· Rate of court cases filed against youth offenders (per 1,000 ages 10-17)	15.4	NA	NA	2004

**Note:** Children and Youth are ages 0-17 unless otherwise noted.

Ⓒ Fiscal or school year

¥ Surveyed high school students in San Diego Unified School District only - data available biennially (Youth Risk Behavior Survey)

\*\* Surveyed 7<sup>th</sup>, 9<sup>th</sup> and 11<sup>th</sup> graders in 33 of 42 school districts in San Diego County - data available biennially (California Healthy Kids Survey) California Health Interview Survey reported by UCLA

± United Way of San Diego County

† HHSA Survey

○ CDC Survey

\* U.S. Census Bureau, American Community Survey

## Child and Family Health and Well-Being 2005

### REPORT CARD SUMMARY TABLE II

#### COMPARISONS OF THE COUNTY, THE STATE, AND THE NATION, CONT.

MEASURE	San Diego County	California	U.S.	Year of Data
<b>A Safe Environment, cont.</b>				
· Rates of violent crime victimization of children and youth (per 10,000)				
- ages 0-11	6.6	NA	NA	2004
- ages 12-17	68.1	NA	NA	2004
· Rates of unintentional injury hospitalizations and deaths of children and youth (per 100,000 ages 0-18)	313.0	269.5	NA	2003
· Rate of children and youth injured or killed in alcohol-related motor vehicle crashes				
- ages 0-15	23.4	22.9	NA	2004
- ages 16-20	227.4	178.9	NA	2004

<b>Educational Achievement</b>				
· Percent of students attending school per day (K-12) <sup>c</sup>	94.7	NA	NA	2003/04
· Rate of high school seniors who graduate annually (grades 9-12) <sup>c</sup>	81.6	85.3	NA	2003/04
· Percents of students scoring proficient or above on the English Language Arts test of the California Standards Tests <sup>c</sup>				
- grade 3	37	31	NA	2005
- grade 8	44	39	NA	2005
- grade 11	38	36	NA	2005
· Percent of high school graduates who enroll in college	51.6	54.0	NA	2003/04

**Note:** Children and Youth are ages 0-17 unless otherwise noted.

<sup>c</sup> Fiscal or school year

# OUTCOMES & MEASURES

# ECONOMIC SECURITY

Economic security is a key determinant of a family's health and well-being. It helps determine a family's ability to secure adequate food, housing, health care, child care, and transportation.

**The three measures of Economic Security used in the Report Card are:**

1. Percent Unemployed
2. Percent of Children and Youth Living in Poverty
3. Rate of Children and Youth Receiving CalWORKs Assistance

## 1. Percent Unemployed

*Why is the percent unemployed important?*

The economic security of a family depends not just on the circumstances of the family but also on the employment oppor-

tunities available in the broader community; the unemployment rate helps to gauge this opportunity. Increases in job opportunities increase opportunities for families to become self-sufficient. This measure represents the annual average of the percent of the civilian labor force each month that has been looking for but unable to find employment.

### San Diego Rate & Number

In 2004, 4.7% of the civilian labor force was unemployed. This was an estimated 70,700 people.

### San Diego County Measure by Race/Ethnicity

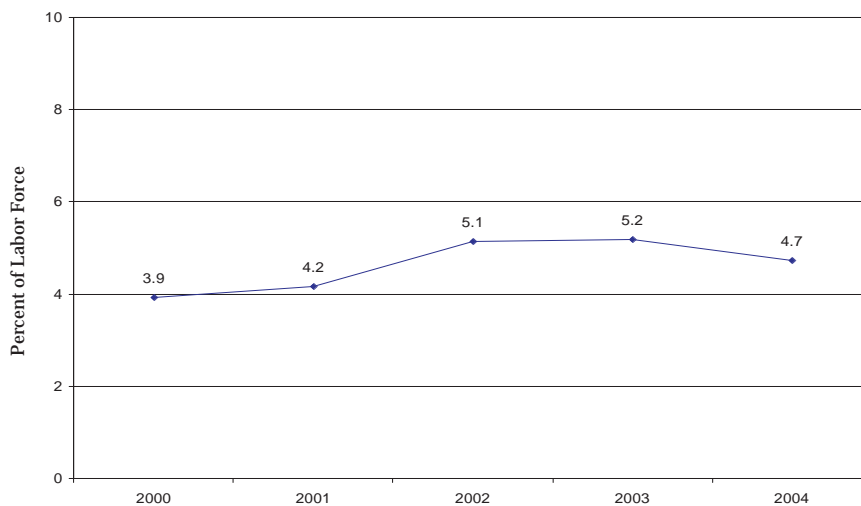
No race/ethnicity data were available.

### San Diego County Measure by Region

No geographic data were available.

## SAN DIEGO COUNTY MEASURE BY TREND

Average Percent of People Unemployed in San Diego County, 2000 - 2004



**Unemployment Rate Has Increased Notably Since 2000.**

### 2004 COMPARISON DATA

San Diego County	4.7%
California	6.2%
United States	4.9%

**Source:** California Employment Development Department, Labor Market Information Division (Aug. 2005); United States Department of Labor, Bureau of Labor Statistics.

## 2. Percent of Children and Youth Living in Poverty

*Why is the percent of children and youth living in poverty important?*

Children and youth living in poverty are vulnerable to "problems regarding their health, emotional well-being, school readiness and achievement and their employability as adults." Poverty correlates with parents not being married, having lower levels of education and being younger parents.<sup>2</sup> In 2004, 29%

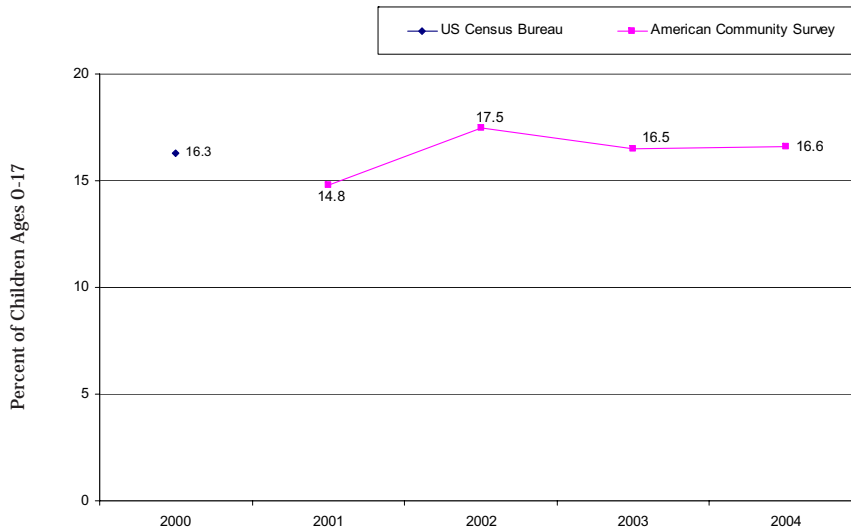
of all births in San Diego County were to unmarried women and 21% were to mothers who had not completed high school. The Federal poverty threshold was defined as income below \$15,205 for a family of two adults and one child in the year 2004.

### San Diego County Rate & Number

It is estimated that 126,445 or 16.6% of children and youth ages 0-17 were living in poverty in 2004.

### SAN DIEGO COUNTY MEASURE BY TREND

Percent of Children Living in Poverty in San Diego County 2000-2004



### Percent of Children Living in Poverty has Remained about the Same Since 2001

#### 2004 COMPARISON DATA

San Diego County	16.6%
California	18.9%
United States	18.4%

Source: U.S. Census Bureau, 1993-2000 estimates from the Small Area Income & Poverty Estimates Branch and 2001-2004 estimates from the American Community Survey Branch.

### San Diego County Measure by Race/Ethnicity

No race/ethnicity data were available.

### San Diego County Measure by Region

No geographic data were available.



### 3. Rate of Children and Youth Receiving CalWORKs Assistance

*Why is the CalWORKs assistance rate important?*

CalWORKs is California's welfare-to-work program. The CalWORKs program is designed to transition people from welfare to work. It provides temporary cash assistance to eligible families with minor children to help pay for housing, food and other necessary expenses. The goal of CalWORKs is to help

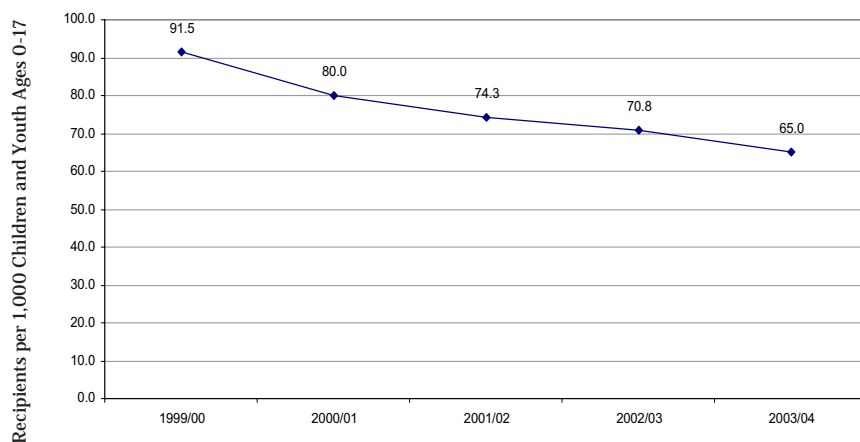
recipients become more self-sufficient by increasing their ability and incentive to work and earn income.

#### San Diego County Rate & Number

In fiscal year 2003/04, the rate of children and youth ages 0-17 receiving CalWORKs assistance was 65.0 per 1,000. This was 49,517 children and youth.

#### SAN DIEGO COUNTY MEASURE BY TREND

Average Monthly Rate of Children and Youth Receiving CalWORKs in San Diego County: Fiscal Years 1999 - 2004



The Rate of Children and Youth on CalWORKs has Decreased Notably Since 1999/2000

#### 2003/04 COMPARISON DATA

San Diego County	65.0
California	94.4
United States	NA

Source: County of San Diego, Health and Human Services Agency, Regional Program Support Division analysis of California Department of Social Services case data. Population estimates obtained from SANDAG and U.S. Census Bureau.

#### San Diego County Measure by Race/Ethnicity

Data on the race/ethnicity of children and youth receiving CalWORKs are not collected.

#### San Diego County Measure by Region

No geographic data were available.

# GOOD HEALTH

The good health of San Diego County's children and families is one of its most important assets. In communities, health is a product of many factors. Many segments of the community can contribute to and share responsibility for its protection and improvement.<sup>3</sup>

**The four measures of Good Health used in the Report Card are:**

1. Percent of Babies with Low Birth Weight
2. Rate of Births to Teens
3. Rate of Suicide Attempts
  - Percent of Youth Who Reported Attempting Suicide
  - Rate of Youth Hospitalized for Self-Inflicted Non-Fatal Injuries
4. Percents of Youth Who Reported Substance Use (cigarette, alcohol, and marijuana use)

**1. Percent of Babies with Low Birth Weight**

*Why is the percent of babies born with low birthweight important?*

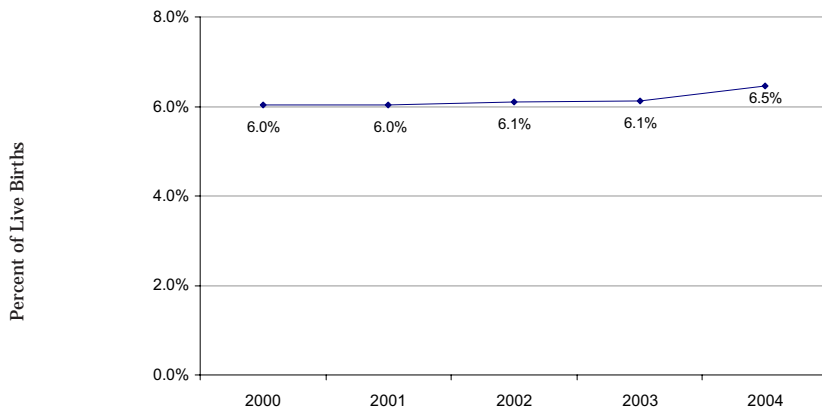
Babies born weighing less than 5 1/2 pounds (2,500 grams) are considered low birth weight. Related to being born prematurely (less than 37 weeks gestation), low birth weight is considered an important national and community health status indicator. Low birth weight is associated with long-term disabilities, such as cerebral palsy, autism, mental retardation, vision and hearing impairments, and other developmental disabilities. Although many of the causes of low birth weight and prematurity are unknown, low birth weight is known to correlate with the use of tobacco, drugs and alcohol by pregnant women.

**San Diego County Percent and Number**

The percent of babies with low birth weight in 2004 was 6.5%; the number of low birth weight births was 2,953.

**SAN DIEGO COUNTY MEASURE BY TREND**

Percent of Babies Born with Low Birth Weight (<2,500 grams) in San Diego County: 2000-2004



**Rate of Low Birth Weight Births has Increased Notably.**

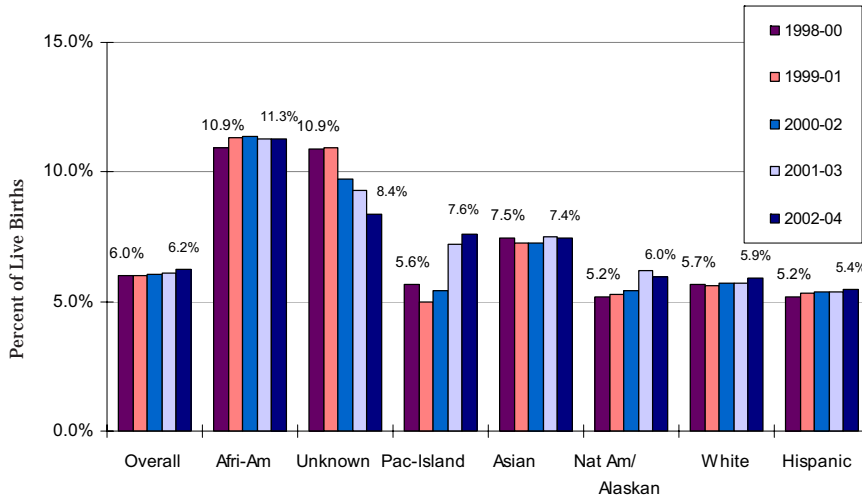
**2004 COMPARISON DATA**

San Diego County	6.5%
California	NA
United States	NA

Source: County of San Diego, Health and Human Services Agency, Public Health Services, Maternal, Child and Family Health Services analysis of data provided by the State of California, Department of Health Services, Center for Health Statistics, Birth Statistical Master Files.

## SAN DIEGO COUNTY MEASURE BY RACE/ETHNICITY

Percent of Babies with Low Birth Weight (<2,500 grams) by Race/Ethnicity in San Diego County: 1998 to 2004 Three Year Averages

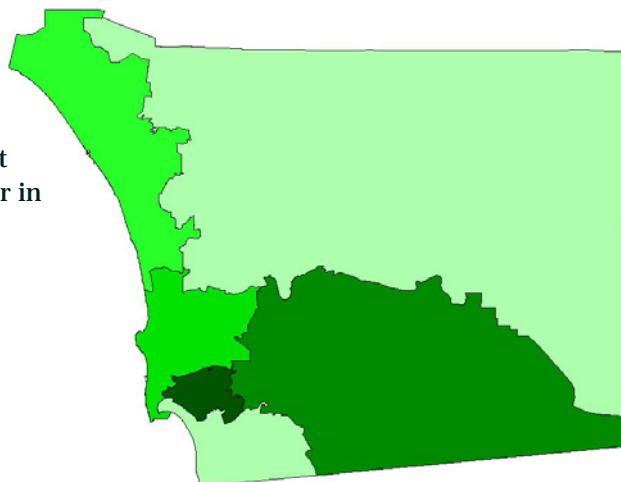


### Percent of Low Birth Weight Births Remains Higher for Blacks

Source: County of San Diego, Health and Human Services Agency, Public Health Services, Maternal, Child and Family Health Services analysis of data provided by the State of California, Department of Health Services, Center for Health Statistics, Birth Statistical Master Files. National Center for Health Statistics.

## PERCENT OF BABIES BORN WITH LOW BIRTHWEIGHT IN SAN DIEGO COUNTY BY HEALTH AND HUMAN SERVICES AGENCY REGIONAL AREAS: 2002 - 2004 THREE YEAR AVERAGE

Percent of Low Weight Births Remains Higher in the Central Region



### Average Percent of Low Birth Weight Births in each Region

Overall County Rate 6.2%

5.8 South
5.9 North Inland
6.1 North Coastal
6.3 North Central
6.4 East
6.9 Central

Note: Low Birthweight is less than 2,500 grams (5 1/2 lbs.)  
Source: County of San Diego, Health and Human Services Agency, Public Health Services, Maternal, Child and Family Health Services analysis of data provided by the State of California, Department of Health Services, Center for Health Statistics, Vital Statistics Tables and Birth Statistical Master Files. National Center for Health Statistics.

## 2. Rate of Teen Births

*Why is the rate of teen births important?*

Early childbearing has consequences for both the mother and child. Teenage parents and their children often face a lifetime of disadvantages, such as poverty, lower education levels and poorer health.<sup>4</sup>

Teenage pregnancy correlates with teens: 1) who do poorly in school and/or use alcohol or drugs; 2) whose parents have low

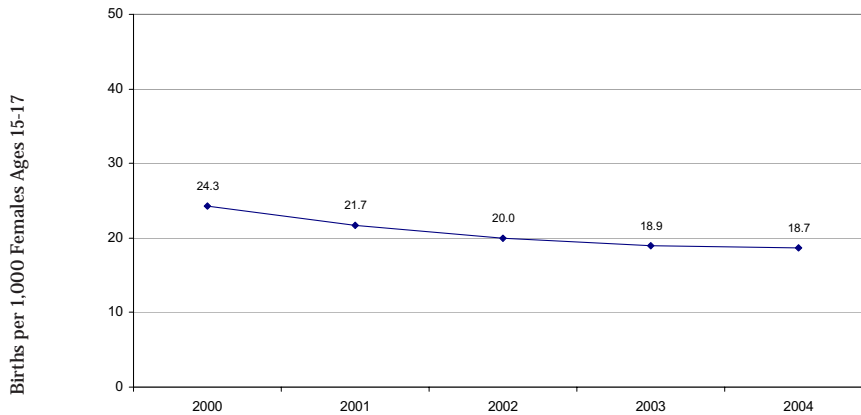
levels of education, are poor, are not married and were teen parents themselves; and 3) who live in low income communities where people move frequently.<sup>5</sup>

### San Diego County Rate & Number

The rate of births to teens ages 15-17 in 2004 was 18.7 per 1,000 girls. There were 1,163 births to teens.

## SAN DIEGO COUNTY MEASURE BY TREND

Rate of Births to Teens (Age 15-17) in San Diego County:  
2000 - 2004



**Teen Birth Rate has  
Decreased Notably Since 2000**

### 2004 COMPARISON DATA

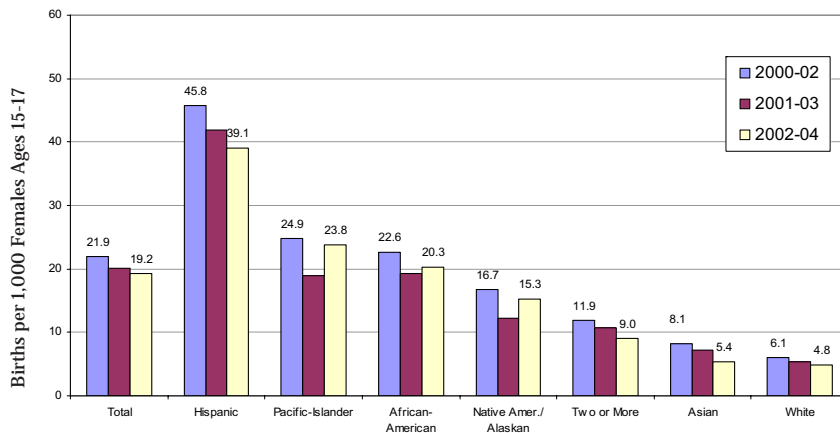
San Diego County	18.7
California	NA
United States	NA

**Note:** State and National comparison data were not available for 2004.

**Source:** County of San Diego, Health and Human Services Agency, Public Health Services, Maternal, Child and Family Health Services analysis of data provided by the State of California, Department of Health Services, Center for Health Statistics, Birth Statistical Master Files.

## SAN DIEGO COUNTY MEASURE BY RACE/ETHNICITY

Rate of Births to Teens (Age 15-17) by Race/Ethnicity in San Diego County:  
2000-2004 Three Year Averages

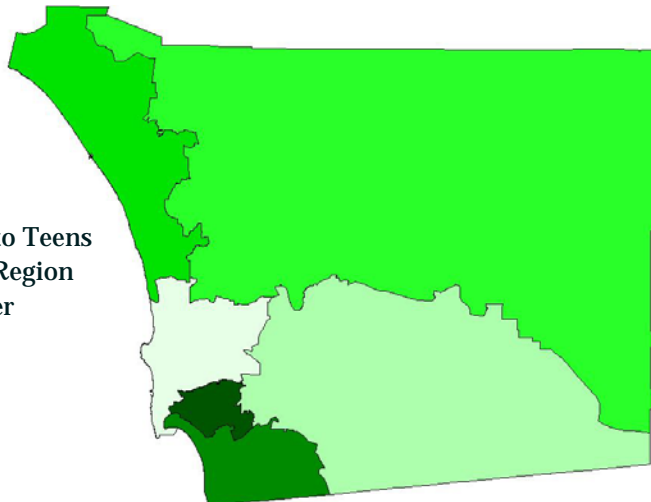


**Hispanic Teens Continue to Have  
a Considerably Higher Rate of  
Births**

**Source:** County of San Diego, Health and Human Services Agency, Public Health Services, Maternal, Child and Family Health Services analysis of data provided by the State of California, Department of Health Services, Center for Health Statistics, Birth Statistical Master Files.

## RATE OF BIRTHS TO TEENS AGES 15-17 IN SAN DIEGO COUNTY BY HEALTH AND HUMAN SERVICES AGENCY REGIONAL AREAS: 2002-2004 THREE YEAR AVERAGE

**Rate of Births to Teens  
in the Central Region  
Remains Higher**



**Average Rate of Births to Teens per 1,000  
Teen Girls Ages 15-17 in Each Region**

Overall County Rate 19.2

6.6 North Central
14.8 East
15.9 North Inland
17.4 North Coastal
23.6 South
34.9 Central

**Note:** Rates do not include births with invalid zip codes (less than 1% of births).

**Source:** County of San Diego, Health and Human Services Agency, Public Health Services, Maternal, Child and Family Health Services analysis of data provided by the State of California, Department of Health Services, Center for Health Statistics, Birth Statistical Master Files.

### 3. Rates of Youth Suicide Attempts

- **Percent of Surveyed San Diego Unified Students Who Reported They Attempted Suicide in the Past Year**
- **Rate of Youth Hospitalized for Self-Inflicted Non-Fatal Injuries**

*Why is attempted suicide important?*

Adolescence is one of the most challenging times of a person's life. It is the time of physical, mental and social transition from childhood to adulthood. Emotional and mental health issues are common during this time of tremendous change, which is reflected at one extreme by the percentage of students that say they have attempted suicide.

*Number of Youth Suicides*

There were 6 suicides of youth ages 0-18 in 2004 in San Diego County. This suicide number is relatively small; therefore,

calculating a rate to monitor overall health and well-being would be potentially misleading. Decreases and increases over time generally would not be truly statistically significant.

#### San Diego County Rate & Number

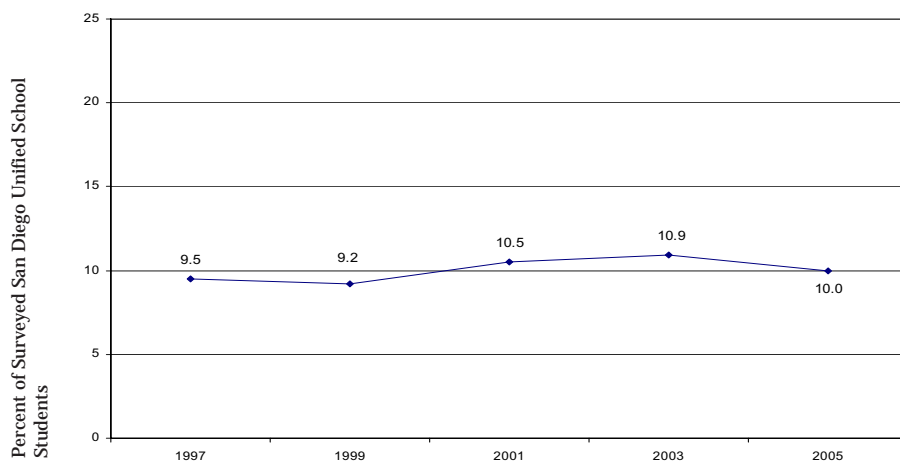
*Percent of Surveyed San Diego Unified Students Who Reported They Attempted Suicide in the Past Year*

The Centers for Disease Control (CDC)'s Youth Risk Behavior Surveillance System is only administered to high school students in the San Diego Unified School District. The percent of surveyed students in 2005 who reported they had attempted suicide at least once in the past year was 10.0.

The data presented below came from the Youth Risk Behavior Surveillance System which is conducted every two years with a random sample of 1,488 9th to 12th grade students in San Diego Unified School District.

#### SAN DIEGO COUNTY MEASURE BY TREND

Percent of Surveyed Students that Reported a Suicide Attempt Among San Diego City High School Students: 1997-2005



Percent of San Diego Unified School District Students that Reported Attempting Suicide Increased Notably Since 1997, But Decreased Since 2003

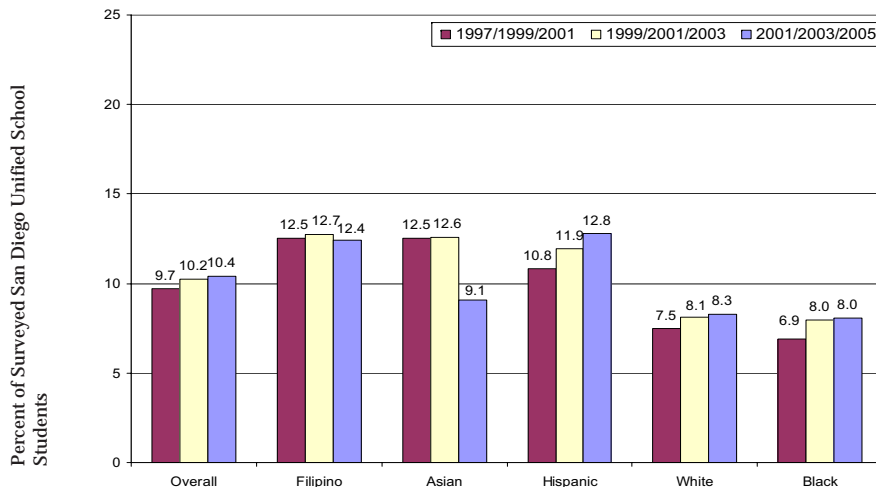
#### 2005 COMPARISON DATA

San Diego Unified	10.0%
California	N/A
United States	N/A

Source: Centers for Disease Control and Prevention, Youth Risk Behavior Surveillance System (YRBSS) - San Diego City Schools, 1997 - 2005

#### SAN DIEGO COUNTY MEASURE BY RACE/ETHNICITY

Percent of Surveyed Students that Reported a Suicide Attempt Among San Diego City High School Students: 1997-2005



There was a Notable Increase in Reports of Attempted Suicide Among Hispanic San Diego City High School Students

Source: Centers for Disease Control and Prevention, Youth Risk Behavior Surveillance System (YRBSS) - San Diego City Schools, 1997 - 2005

Seventy-eight percent of those requested to participate did so. The survey requires parental permission and is self-administered, private, anonymous and voluntary.

**Rate of Youth Hospitalized for Self-Inflicted Non-Fatal Injuries**

The rate of hospitalizations per 10,000 youth ages 13 - 18 for self-inflicted, nonfatal injuries was 6.4 or 168 hospitalizations in 2003. Although every self-inflicted injury reported here might not have been a youth attempting suicide, according to the California Department of Health Services, a nonfatal self-inflicted injury is often considered a suicide attempt. Causes of the self-inflicted non-fatal injuries reported here include cuts and piercing, firearms, hanging, jumping, and poisoning.

**San Diego County Measure by Race/Ethnicity**

Rates were not calculated by race/ethnicity because of the small number of hospitalizations within each race/ethnic group.

**San Diego County Measure by Region**

No geographic data were available.

**4. Percents of Youth Who Reported Substance Use**

- cigarette use
- alcohol use
- marijuana use

*Why are the percents of substance use by youth important?*

The main threats to adolescents' current and long-term health and well-being are their health risk behaviors. Three of the most common, as well as serious, health risk behaviors are the use of cigarettes, alcohol and marijuana. Youth substance use correlates with poor school performance, antisocial behavior and interpersonal problems with peers and parents.<sup>6</sup>

Cigarette and marijuana use are defined as smoking cigarettes or marijuana on one or more of the past 30 days. Alcohol use is defined as having had at least one drink of alcohol on one or more of the past 30 days.

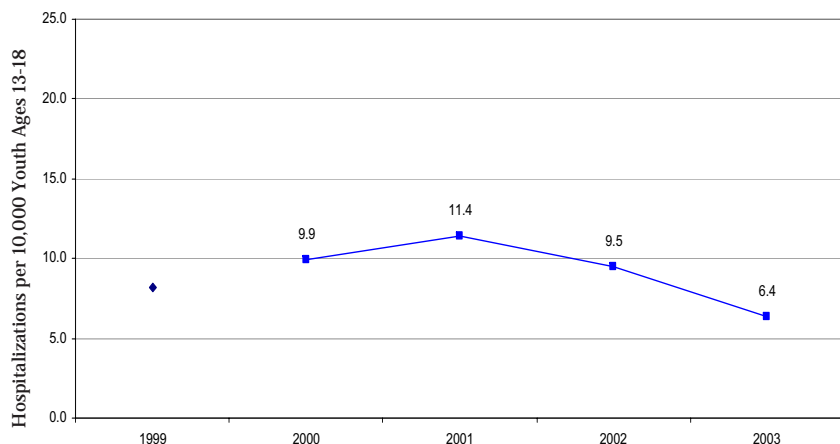
The data presented below on youths reporting substance use came from the California Healthy Kids Survey which is conducted every two years with a sample of more than 20,000 students in school districts throughout in San Diego County.

**San Diego County Rate & Number**

In 2003, 11.4% of surveyed San Diego County students reported smoking a cigarette, 28.9% reported alcohol use, and 13.4% reported marijuana use in the past 30 days.

**SAN DIEGO COUNTY MEASURE BY TREND**

Self-Inflicted Non-Fatal Hospitalized Injuries Among Youth Ages 13-18



**Rate of Self-Inflicted, Nonfatal Hospitalized Injuries Decreased Notably**

**2003 COMPARISON DATA**

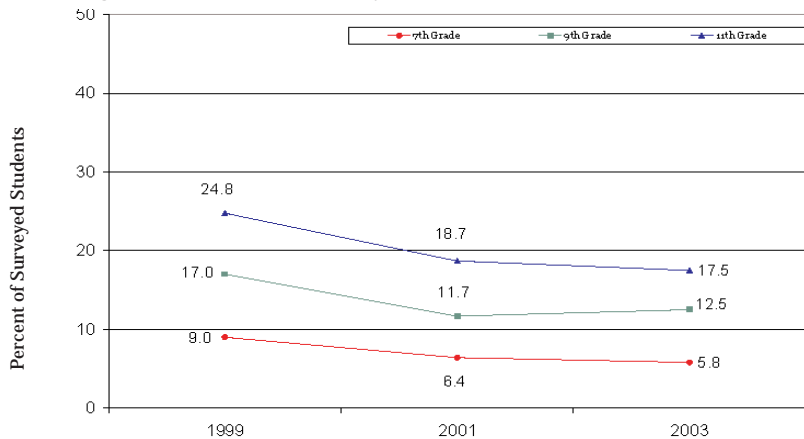
San Diego County	6.4
California	8.6
United States	NA

**Note:** Prior to 2000, a single set of codes were used to track both fatal and nonfatal causes of injury. Beginning in 2000, a separate set of codes are being used to track deaths while hospitalizations were tracked using the original set of codes. This may explain changes in the rates from years prior to 2000 and rates for 2000 and later.

**Source:** California Office of Statewide Health Planning and Development, Patient Discharge Data obtained from the Epidemiology and Prevention for Injury Control branch of the California Department of Health Services.

**SAN DIEGO COUNTY MEASURE BY TREND**

Percent of Surveyed Students (Grades 7,9,11) Who Reported Smoking Cigarettes in the Past 30 Days: 1999-2003



**Rate of Students Reporting Cigarette Smoking Declined for all Grades**

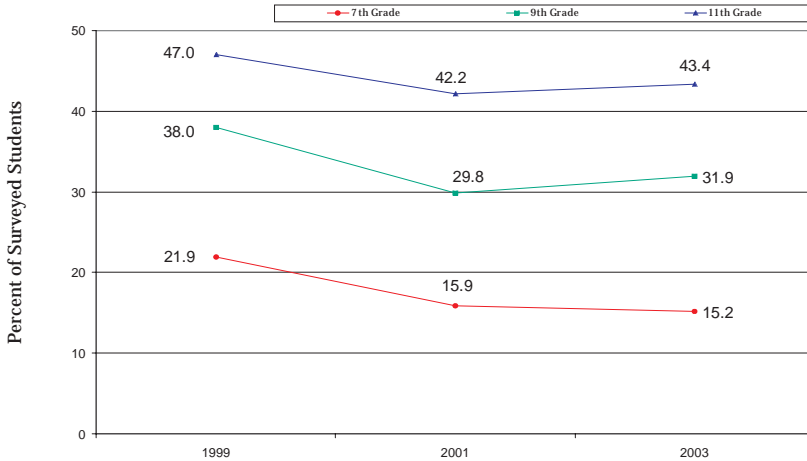
**NO COMPARISON DATA AVAILABLE**

San Diego (2003) (three-grade average)	11.4%
California	NA
United States	NA

**Source:** San Diego County Office of Education, Safe Schools Unit's Analysis of the 1999-2003 California Healthy Kids Survey Results for San Diego County.

## SAN DIEGO COUNTY MEASURE BY TREND

Percent of Surveyed Students (Grades 7, 9, 11) Who Reported Drinking Alcohol in the Past 30 Days: 1999-2003



Reported Alcohol Use for Grades 7, 9, and 11 Has Decreased

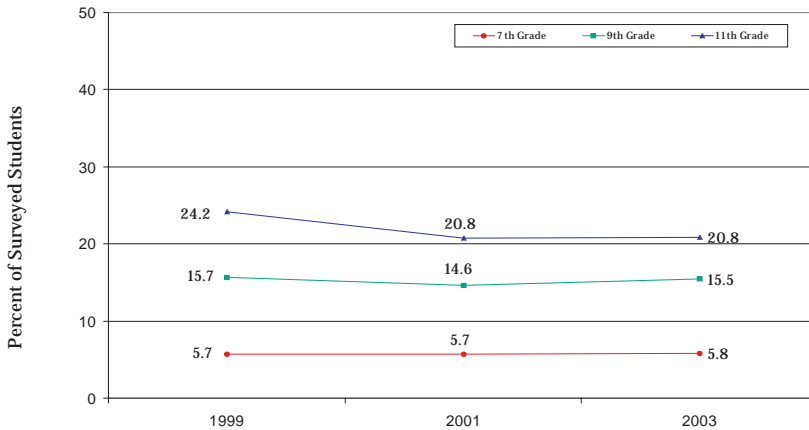
**NO COMPARISON DATA AVAILABLE**

San Diego (2003) (three-grade average)	28.9%
California	NA
United States	NA

Source: San Diego County Office of Education, Safe Schools Unit's Analysis of the 1993-2003 California Healthy Kids Survey Results for San Diego County.

## SAN DIEGO COUNTY MEASURE BY TREND

Percent of Surveyed Students (Grades 7, 9, 11) Who Reported Marijuana Use in the Past 30 Days: 1999-2003



Reported Marijuana Use has Remained about the Same for 7th and 9th Graders; Decreased Among 11th Graders

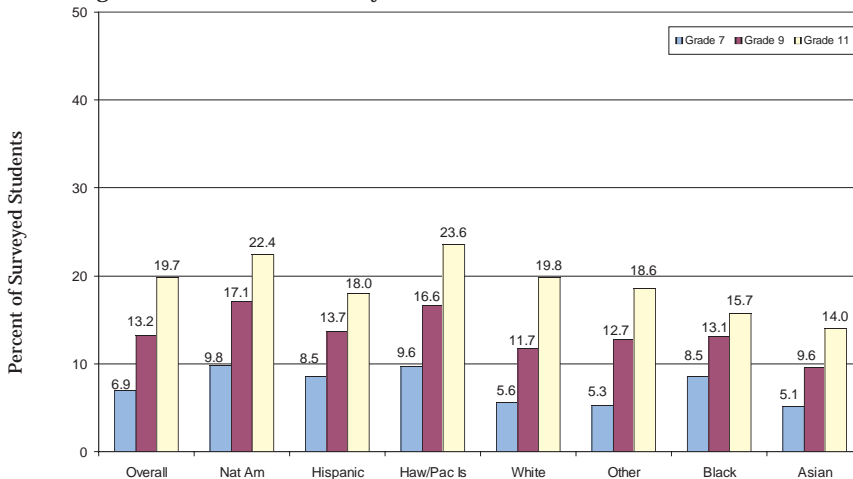
**NO COMPARISON DATA AVAILABLE**

San Diego (2003) (three-grade average)	13.4%
California	NA
United States	NA

Source: San Diego County Office of Education, Safe Schools Unit's Analysis of the 1993-2003 California Healthy Kids Survey Results for San Diego County.

## SAN DIEGO COUNTY MEASURE BY RACE/ETHNICITY

Percent of Surveyed Students (Grades 7, 9, 11) Who Reported Smoking Cigarettes in the Past 30 Days: 1999-2003

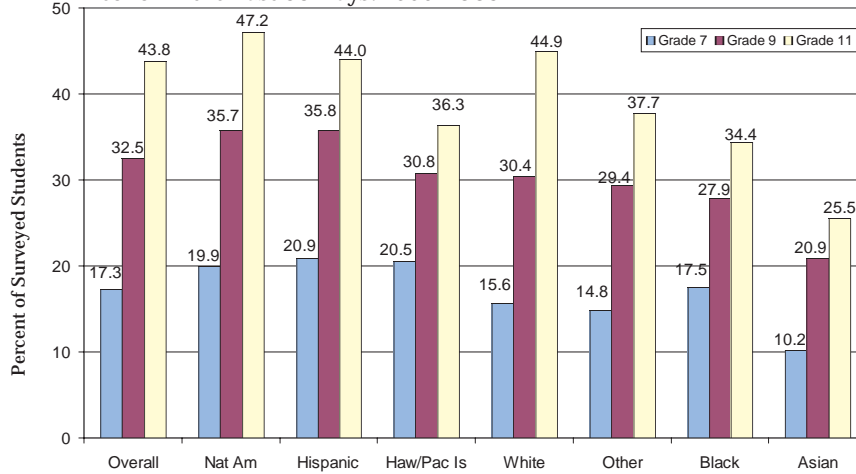


Hawaiian/Pacific Islanders and Native Americans Reported the Highest Rates of Cigarette Smoking in Grades 9 and 11

Source: San Diego County Office of Education, Safe Schools Unit's Analysis of the 1999-2003 California Healthy Kids Survey Results for San Diego County.

## SAN DIEGO COUNTY MEASURE BY RACE/ETHNICITY

Percent of Surveyed Students (Grades 7, 9, 11) Who Reported Drinking Alcohol in the Past 30 Days: 1999-2003



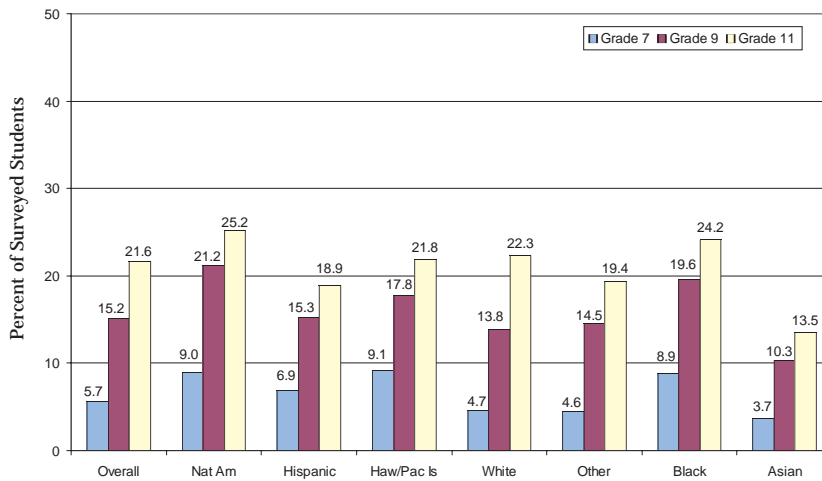
**Native Americans and Hispanics Reported the Highest Rates of Alcohol Use in Grade 9**

**Native Americans, Whites, and Hispanics Reported the Highest Rates of Alcohol Use in Grade 11**

Source: San Diego County Office of Education, Safe Schools Unit's Analysis of the 1999-2003 California Healthy Kids Survey Results for San Diego County.

## SAN DIEGO COUNTY MEASURE BY RACE/ETHNICITY

Percent of Surveyed Students (Grades 7, 9, 11) Who Reported Marijuana Use in the Past 30 Days: 1999-2003



**Native Americans and Blacks Reported the Highest Rates of Marijuana Use in Grades 9, 11**

Source: San Diego County Office of Education, Safe Schools Unit's Analysis of the 1999-2003 California Healthy Kids Survey Results for San Diego County.

### San Diego County Measure by Region

No geographic data were available.



# APPROPRIATE ACCESS TO SERVICES

Having access to childcare and health care services is critical to the overall well-being of our community. In the U.S. in 2004 it was estimated that 58% of mothers with children under 6 years old, and 74% of mothers with children between the ages of 6 and 17 were employed.<sup>8</sup> Many of these families need childcare. All children need access to health insurance coverage and appropriate health services, like immunizations.

## **The Four Appropriate Access to Services Measures used in the Report Card are:**

1. Access to Childcare
2. Percent of Young Children Who Are Adequately Immunized
3. Percent of Children and Youth with Health Insurance
4. Percent of Households with a Child Age 1-18 That Used Dental Core Services for Cavity and/or Emergency Treatment in the Past 12 months

## **1. Access to Childcare**

### *Why is access to childcare important?*

The availability of childcare is one of the critical success factors for families in both getting and keeping jobs. Low-income families face particular challenges in obtaining quality childcare that is affordable.<sup>9</sup>

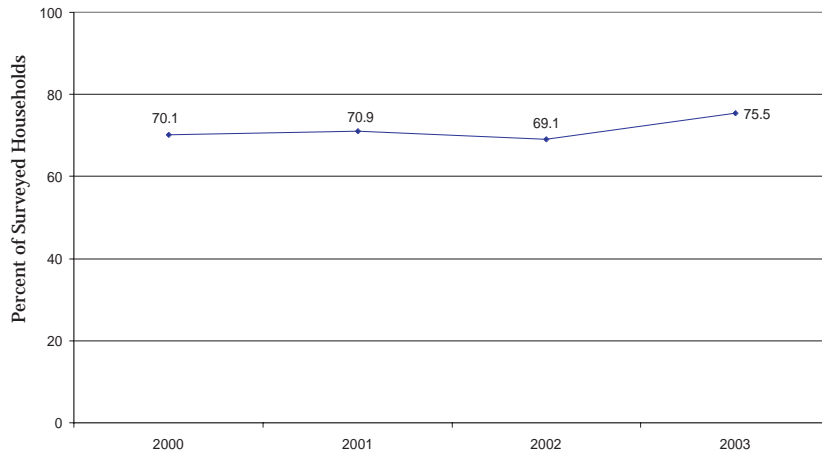
This measure reports the percentage of households with children age 12 and younger that were able to get all the childcare needed during the past 12 months. The San Diego chapter of the United Way conducts an annual telephone survey of randomly selected persons living throughout San Diego County. Respondents were asked to describe their childcare needs during the day, before and after school, or in the evening while the parent or guardian is at work or school, excluding babysitting needed for fun or social activities.

### **San Diego County Rate & Number**

The United Way survey was not conducted for 2004.

## SAN DIEGO COUNTY MEASURE BY TREND

Percent of Households with Children ages 0-12 that Reported Adequate Access to Childcare: 2000-2003



**Percent of Households Reporting Adequate Access to Childcare has Remained about the Same**

### NO COMPARISON DATA AVAILABLE

San Diego County (2003)	75.5%
California	NA
United States	NA

**Source:** San Diego County Health and Human Services Agency, Public Health Services, Community Epidemiology analysis of the results from the United Way Outcomes & Community Impact Program's 2003 Survey.

## 2. Percent of Young Children Who Are Adequately Immunized

*Why is the percent of young children immunized important?*

One of the best known, simplest and most effective ways to keep children healthy is to immunize them. Young children are particularly vulnerable to vaccine-preventable diseases if their shots are not kept up-to-date.

This measure represents the percent of children ages 19 - 36 months who are adequately immunized for their age and is based on Countywide survey data. The measure is specific to the 4:3:1 series (DTP, Polio, MMR/MCV) that the child should have completed. Two different surveys were conducted to estimate the percent of children adequately immunized. The HHSA San Diego

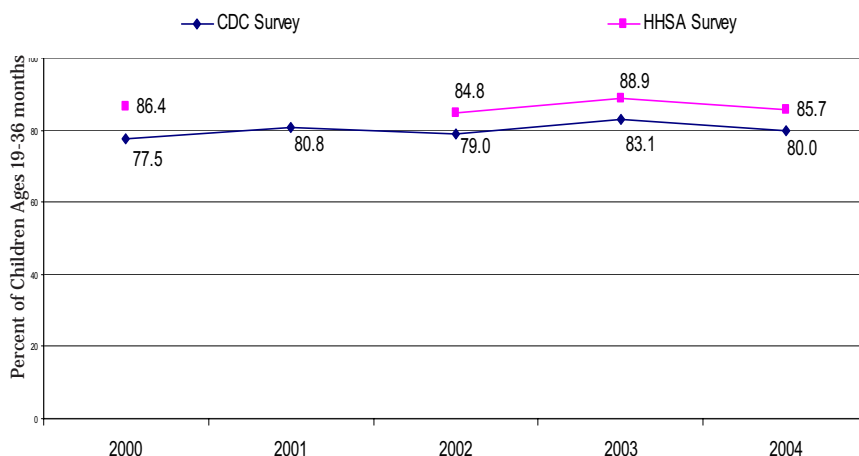
Immunization Program did one survey and the federal Centers for Disease Control and Prevention (CDC) did the other. The HHSA survey was not conducted in 2001 due to funding constraints.

### San Diego County Rate & Number

Based on the CDC survey, in 2004, 80.0% of young children (age 19 - 36 months) were adequately immunized for their age. Based on the HHSA San Diego Immunization Program Survey, in 2004, 85.7% of young children were adequately immunized for their age.

## SAN DIEGO COUNTY MEASURE BY TREND

Percent of Young Children Who Are Adequately Immunized in San Diego County: 2000-2004



**Immunization Rates Have Increased Slightly Since 2000, Based on the CDC Survey**

### NO COMPARISON HHSA SURVEY DATA

San Diego County (2004)	85.7%
California	NA
United States	NA

### 2004 COMPARISON CDC SURVEY DATA

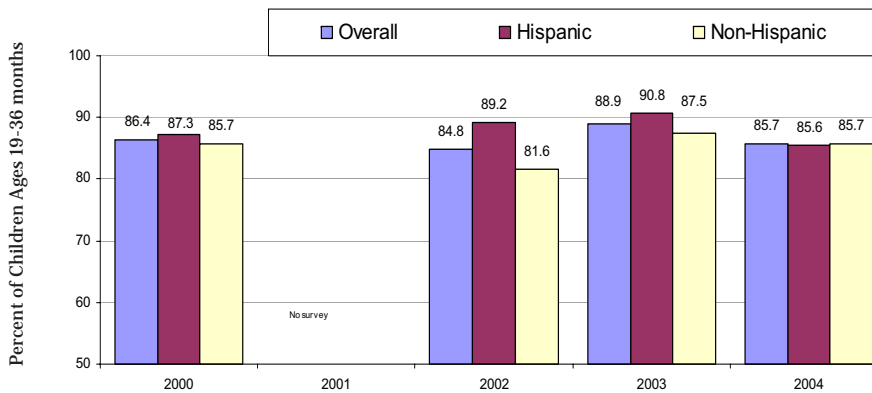
San Diego County	80.0%
California	84.1%
United States	83.5%

**Note:** Both sources of data are for infants ages 19-36 months who have been immunized for the series 4-DTP, 3-Polio, 1-MMR/MCV. An HHSA Survey was not conducted in 2001 due to funding constraints.

**Source:** HHSA Survey: County of San Diego, Health and Human Services Agency, San Diego Immunization Initiative, Immunization Random Digit Dialing Survey; CDC Survey: Centers for Disease Control and Prevention, National immunization Survey

## SAN DIEGO COUNTY MEASURE BY ETHNICITY

Percent of Young Children Who Are Adequately Immunized by Hispanic Ethnicity, HHSA Survey: 2000-2004



### Immunization Coverage for Non-Hispanic Children Has Decreased Slightly Based on HHSA Survey

Source: County of San Diego, Health and Human Services Agency, San Diego Immunization Initiative, Immunization Program Random Digit Dialing Survey; Centers for Disease Control and Prevention, National Immunization Survey.

### San Diego County Measure by Region

No geographic data were available.

### 3. Percent of Children and Youth with Health Insurance

*Why is the percent of children and youth with health insurance important?*

Having health insurance is one of the best predictors of having access to medical care. In general, compared to children with health insurance, uninsured children are less likely to have a usual source of medical care and are less likely to receive the preventive and acute health care services that they need.<sup>10</sup>

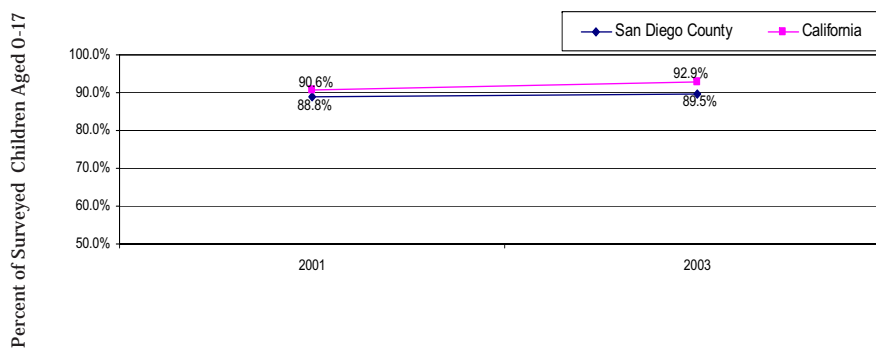
Please note that the information presented below is based on data collected by two different organizations that used different surveys conducted over different time periods.

### San Diego County Rate & Number

The California Health Interview Survey (CHIS) is conducted biennially statewide by the University of California at Los Angeles (UCLA) and asks respondents about health insurance coverage at the time of the interview. In 2003, the CHIS found 89.5% of children (0-17) in San Diego County had health insurance. This is estimated to be 644,000 children. The CHIS also found 92.9% of children (0-17) in the State of California had health insurance. This is estimated to be 8.8 million children.

## SAN DIEGO COUNTY MEASURE BY TREND

Percent of Children and Youth with Health Insurance in San Diego County: 2001-2003



### It Is Too Early To Report a Trend For The Percent of Children and Youth With Health Insurance

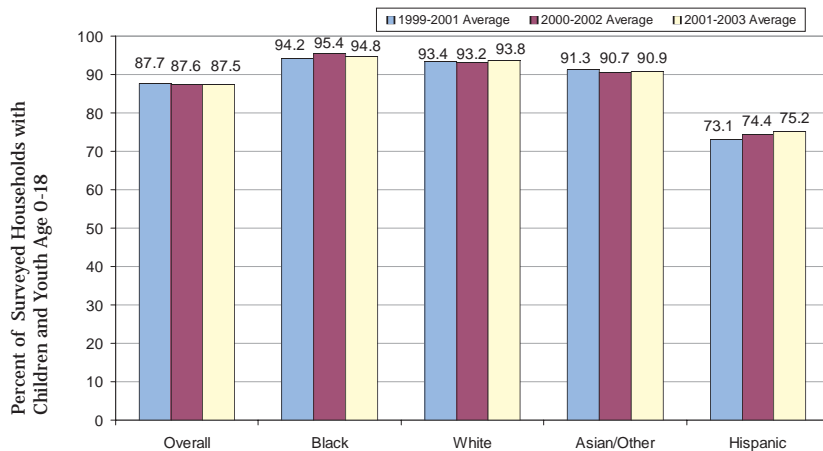
#### 2003 COMPARISON CHIS DATA

San Diego County	89.5%
California	92.9%
United States	NA

Source: University of California at Los Angeles, Center for Health Policy Research, California Health Interview Survey

## SAN DIEGO COUNTY MEASURE BY RACE/ETHNICITY

Percent of Households with Children and Youth with Health Insurance by Race/Ethnicity in San Diego County: 1999-2003 Three Year Averages



### Fewer Hispanic Children and Youth Had Health Insurance

Source: San Diego County Health and Human Services Agency, Public Health Services, Community Epidemiology analysis of the results from the United Way Outcomes & Community Impact Program's 2003 Survey

#### 4. Percent of Children Aged 2-17 who visited a Dentist, Hygienist, or Orthodontist in the Past 12 months

*Why is oral health important?*

Tooth decay is one of the most prevalent and untreated diseases of children. For many children, tooth decay severely interferes with eating, sleeping, speaking, learning and playing.

The California Health Interview Survey (CHIS) is conducted biennially statewide by the University of California at Los Angeles (UCLA) and asks respondents whether children ages 2-17 had a dental visit in the past twelve months.

#### San Diego County Rate & Number

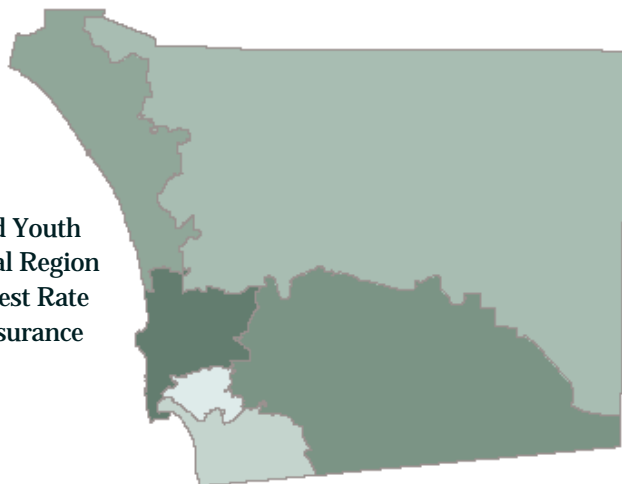
Of the surveyed children under aged 2-17 in 2003, 82.1 % indicated they had visited a dentist, hygienist, or orthodontist within the past 12 months. In 2001, 76.3% reported the same. In the State of California, the rate for 2003 was 79.5 The rate for 2001 was 77.7.

#### San Diego County Measure by Region

No geographic data were available.

## PERCENT OF HOUSEHOLDS WITH CHILDREN AND YOUTH WITH HEALTH INSURANCE BY HEALTH AND HUMAN SERVICES AGENCY REGIONAL AREAS: 2001-2003 THREE YEAR AVERAGE

Children and Youth in the Central Region had the Lowest Rate of Health Insurance



Estimated Percent of Households with Insured Children in Each Region

Overall County Rate 87.5%

78.9%	Central
85.2%	South
88.5%	North Inland
89.0%	North Coastal
89.5%	East
94.0%	North Central

Note: Includes insurance provided by employer, purchased privately, Medi-Cal, Healthy Families, Medicare, or Champus.  
Source: San Diego County Health and Human Services Agency, Public Health Services, Community Epidemiology analysis of the results from the United Way Outcomes & Community Impact Program's 2003 Survey

# A SAFE ENVIRONMENT

The safety of a community is an important element of the health and well-being of its residents. Safety includes protection from both physical and emotional harm and extends from within the home into the community.

Children who are exposed to, or who are victims of violence, other abuse or neglect "often experience problems down the road involving juvenile crime, poor academic performance, drug and alcohol abuse, domestic violence and other social ills."<sup>4</sup> In addition, children are especially vulnerable to unintentional injuries, the leading cause of death for children and youth under age 18.

## **The five measures of A Safe Environment used in the Report Card are:**

- 1. Rate of Substantiated Cases of Child Abuse/Neglect**
- 2. Rate of Domestic Violence Reports**
- 3. Rate of Court Cases Filed Against Youth Offenders**
- 4. Rates of Violent Crime Victimization of Children and Youth**
- 5. Rates of Unintentional Injuries and Unintentional Injury Deaths in Children and Youth**
  - overall
  - due to alcohol-related motor vehicle crashes

## **1. Rate of Substantiated Cases of Child Abuse/Neglect**

*Why is the rate of substantiated child abuse/neglect cases important?*

Child abuse/neglect in a family often reflects a variety of underlying problems in the family. It correlates with "poverty, having children at too early an age, drug or alcohol abuse by the parents, a lack of childcare or supervision for the children and a lack of community support for the parents."

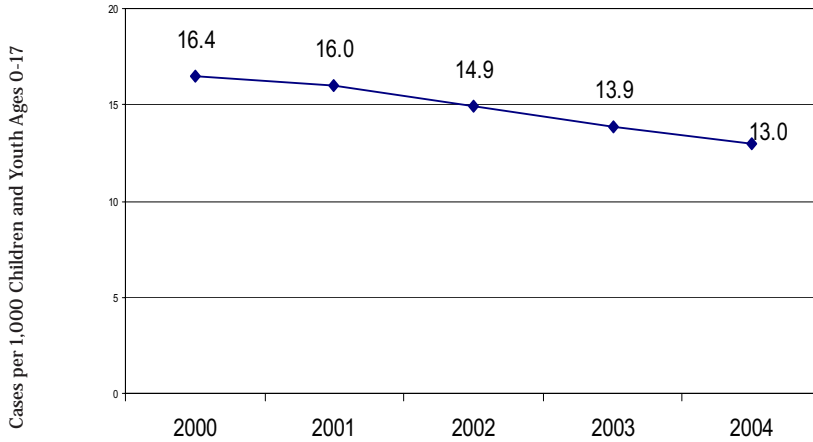
A child abuse/neglect case is considered to be a "substantiated referral" where a social worker has investigated a report and determines that some type of abuse/neglect did occur.

## **San Diego County Rate & Number**

In 2004, the rate of substantiated cases was 13.0 per 1,000 children ages 0-17; the number of cases was 9,889. Starting in late 1999, the criteria for substantiated child abuse/neglect cases were narrowed, meaning more evidence was required for a report to be considered substantiated.

### SAN DIEGO COUNTY TREND

Rate of Substantiated Cases of Child Abuse/Neglect in San Diego County: 2000-2004



**Overall Rate of Substantiated Cases of Child Abuse/Neglect Has Notably Decreased**

#### 2004 COMPARISON DATA

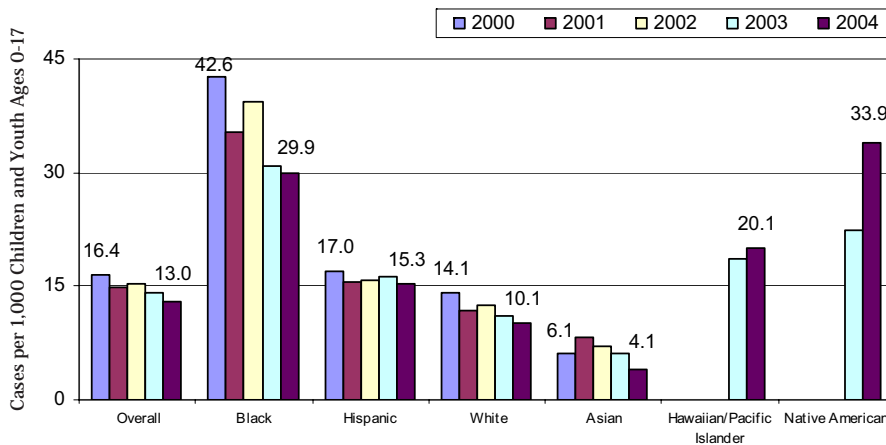
San Diego County	13.0
California	11.5
United States	NA

**Note:** Results that appear in this figure are slightly different than the results that appeared for these same years in the 2004 Report Card. Rates may differ from UC Berkeley data due to the use of local population data.

**Source:** University of California at Berkeley, Center for Social Services Research, Child Welfare Research Center, Child Welfare Services Reports for San Diego County and California, July 2005. Population estimates from SANDAG.

### SAN DIEGO COUNTY MEASURE BY RACE/ETHNICITY

Rate of Substantiated Cases of Child Abuse/Neglect by Race/Ethnicity in San Diego County: 2000 - 2004



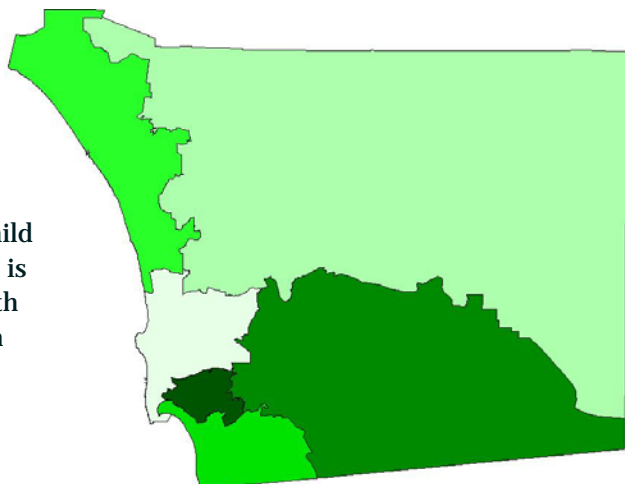
**The Rate for Blacks has Decreased Notably. It Is Too Early To Report a Trend for Native Americans And Hawaiian/Pacific Islanders**

**Note:** Rates have been rounded and include cases only where race was identified. **Hawaiian/Pacific Islander and Native Americans have been collected separately since 2003.**

**Source:** County of San Diego, Health and Human Services Agency, Child Welfare Services.

### RATE OF SUBSTANTIATED CASES OF CHILD ABUSE/NEGLECT IN SAN DIEGO COUNTY BY HEALTH AND HUMAN SERVICES AGENCY REGIONAL AREAS: 2002-2004 THREE-YEAR AVERAGE

**The Rate of Child Abuse/Neglect is Lowest in North Central Region**



**Average Rate of Substantiated Cases Per 1,000 Children and Youth Age 0-17 in Each Region**

Overall County Rate 13.8

6.6 North Central
9.5 North Inland
11.5 North Coastal
13.6 South
16.6 East
23.8 Central

**Note:** Rates have been rounded and do not include cases with invalid or unknown zip codes (2% of cases). Population estimates for 2004 used to calculate the three-year averages for this figure are slightly different than the estimates used for the 2004 Report Card.

**Source:** County of San Diego, Health and Human Services Agency, Child Welfare Services.

## 2. Rate of Domestic Violence Reports

*Why is the rate of domestic violence reports to law enforcement important?*

A healthy community starts with safe homes. The victims of domestic violence are often women with children in the home. Children who witness domestic violence suffer intense stress and develop problems as noted in the introduction to this section. Domestic violence in families correlates with families having very low income, children in the families being abused and use of alcohol or drugs by the perpetrators.<sup>11</sup> Domestic violence is defined as an actual or threatened act of physical or sexual violence, or psychological/emotional abuse where the perpetrator and victim have

a current or discontinued relationship to each other. For example the victim is a spouse, girlfriend, boyfriend, cohabitant or other intimate partner.

### San Diego County Rate & Number

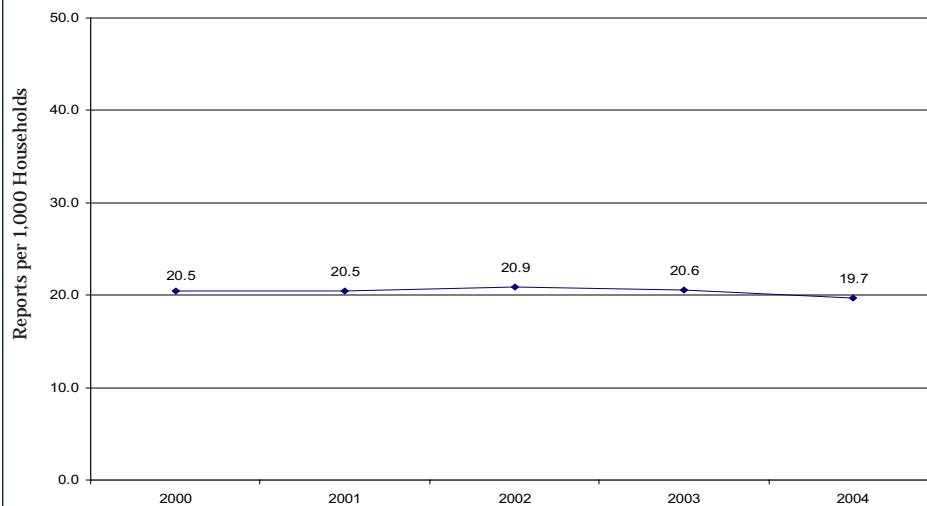
In 2004, there were 19.7 reports of domestic violence per 1,000 households; the number of reports was 20,612.

### San Diego County Measure by Race/Ethnicity

No race/ethnicity data were available.

## SAN DIEGO COUNTY MEASURE BY TREND

Rate of Domestic Violence Reports in San Diego County: 2000-2004



### Rate of Domestic Violence Has Decreased Slightly Since 2000

#### NO COMPARISON DATA AVAILABLE

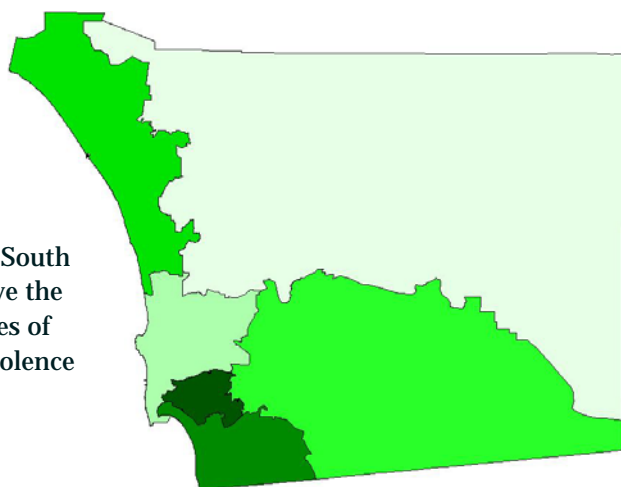
San Diego County (2004)	19.7
California	NA
United States	NA

**Note:** Results that appear in this figure are slightly different than the results that appeared for these same years in the 2004 Report Card due to a revised estimate of the number of households in San Diego County.

**Source:** San Diego County, Health and Human Services Agency, Strategy and Planning Division analysis of data obtained from Automated Regional Justice Information System (ARJIS) with the assistance of the San Diego County District Attorney's Office; Population estimates from SANDAG.

## RATE OF DOMESTIC VIOLENCE REPORTS IN SAN DIEGO COUNTY BY HEALTH AND HUMAN SERVICES AGENCY REGIONAL AREAS 2002-2004 THREE YEAR AVERAGE

Central and South Regions Have the Highest Rates of Domestic Violence



### Average Rate of Domestic Violence Reports per 1,000 Households in each Region

Overall County Rate 20.5

12.7	North Inland
13.3	North Central
16.8	East
17.9	North Coastal
27.5	South
33.7	Central

**Note:** Rates represent law-enforcement reports of domestic violence incidents. Rates do not include reports with invalid zip codes (less than 1% of reports). Rates are based on revised estimates of the number of households per Region.

**Source:** San Diego County, Health and Human Services Agency, Strategy and Planning Division analysis of data obtained from Automated Regional Justice Information System (ARJIS) with the assistance of the San Diego County District Attorney's Office; Population estimates from SANDAG.

### 3. Rate of Court Cases Filed Against Youth Offenders

*Why is the rate of court cases filed against youth important?*

Juvenile crime affects not only youth, but creates an unsafe environment for the entire community. Juvenile crime correlates with the presence of poverty, child abuse and neglect, exposure to violence, and lack of parental monitoring.<sup>4</sup>

One way to measure juvenile crime is to look at the number of cases involving youth ages 10-17 which are filed in court. The types of offenses reported below are felonies, misdemeanors, and other offenses (e.g. violation of probation, curfew violation, and truancy).

### San Diego County Rate and Number

In 2004, the rate of cases filed in court was 15.4 per 1,000 children and youth ages 10-17; the number of cases filed was 6,369.

### San Diego County Measure by Race/Ethnicity

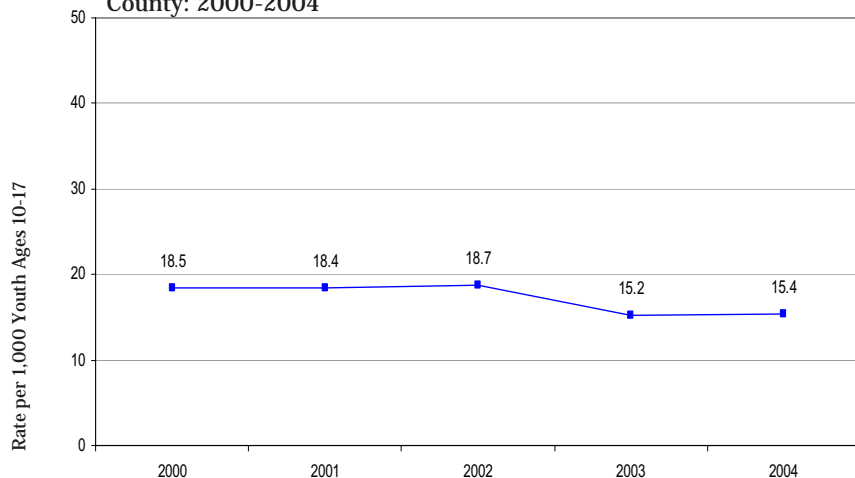
No race/ethnicity data were available.

### San Diego County Measure by Region

No geographic data were available for 2004.

## SAN DIEGO COUNTY TREND

Rate of Court Cases Filed Against Youth Offenders in San Diego County: 2000-2004



Rate of Cases Filed Against Youth Offenders Has Decreased Notably to 15.4% Since 2000

### NO COMPARISON DATA AVAILABLE

San Diego County (2004)	15.4
California	NA
United States	NA

**Note:** Results that appear in this figure are slightly different than the results that appeared for these same years in the 2004 Report Card due to revised estimates from the Probation Department.

**Source:** San Diego County, Public Safety Group, Probation Department.

### 4. Rates of Violent Crime Victimization of Children and Youth

- children ages 0-11
- youth ages 12-17

*Why are the rates of violent crime victimization important?*

Violent crime victimization of a child or youth is a very disturbing event. This measure includes the violent crimes of homicide, rape, sexual assault, aggravated assault and robbery (by force or threat). The data presented below is for two different age groups: children 0-11 and youth 12-17. The numbers for children are much smaller and the circumstances of the crime are different; usually the perpetrator is an adult family member or caregiver. For youth, the numbers are larger and the perpetrator generally is another youth whom they know. There were 24 homicide victims ages 0-17 in 2004.

### San Diego County Rates & Numbers

In 2004, there were 6.6 victims of violent crime per 10,000 children ages 0-11 and 68.1 per 10,000 youth ages 12-17. This represents a total of 2,118 victims ages 0-17 (excluding domestic violence).

### San Diego County Measure by Race/Ethnicity

No race/ethnicity data were available.

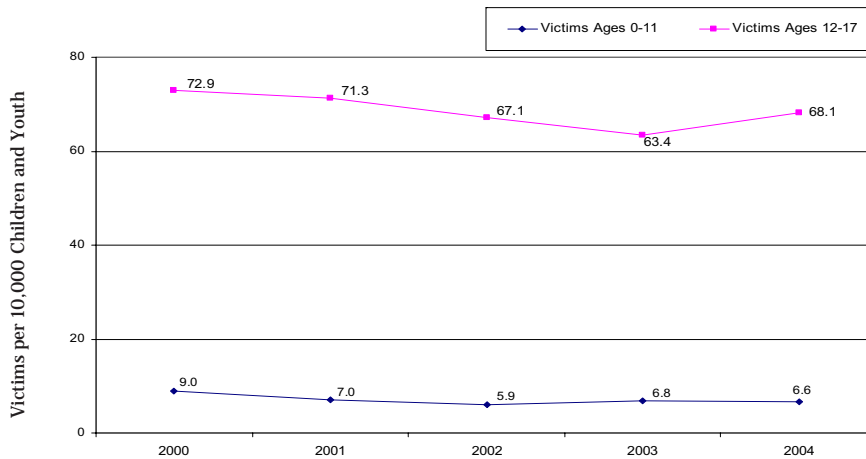
### San Diego County Measure by Region

No geographic data were available.



## SAN DIEGO COUNTY MEASURE BY TREND

Rate of Violent Crime Victims Ages 0-11 and 12-17 in San Diego County: 2000-2004



The Overall Rate of Children and Youth Victims has Decreased Notably Since 2000

### NO COMPARISON DATA AVAILABLE

San Diego County (2004)

Ages 0-11 6.6

Ages 12-17 68.1

California NA

United States NA

Source: Automated Regional Justice Information System (ARJIS), San Diego Data Processing Corporation, SANDAG Population Estimates.

## 5. Rates of Unintentional Injury Hospitalizations and Deaths of Children and Youth

- Overall unintentional injury hospitalizations and deaths
- Injuries or deaths due to alcohol-related motor vehicle crashes

*Why are the rates of overall unintentional injuries/deaths and alcohol-related motor vehicle crash injuries/deaths important?*

The most common types of accidents that result in hospitalized injuries, or deaths due to unintentional injuries, include motor vehicle crashes, drowning, suffocation, fire, and poisoning. Many more unintentional injuries do not result in death but are costly in terms of suffering and short-term and long-term disability. Most of these injuries are preventable.

Alcohol-related motor vehicle crash injuries reflect not only a very preventable type of injury, but also may gauge the level of alcohol and drug abuse in the community. Often, fatal crashes involving teenage drivers are found to be alcohol or drug-related. The Highway Patrol and other law enforcement agencies record information about injuries.

## San Diego County Rates & Numbers

In 2003, 313 per 100,000 children ages 0-18 died or were hospitalized as a result of unintentional injuries. There were 2,340 hospitalizations and 45 deaths.

In 2003, the rate for injuries, as reported by law enforcement, or deaths due to driving while under the influence of alcohol was 23.4 per 100,000 children ages 0-15 and 227.4 per 100,000 youth ages 16-20. These rates represent a total 159 injuries and deaths for children (age 0-15) and 518 injuries and deaths for youth (age 16-20) related to driving under the influence.

## San Diego County Measure by Race/Ethnicity

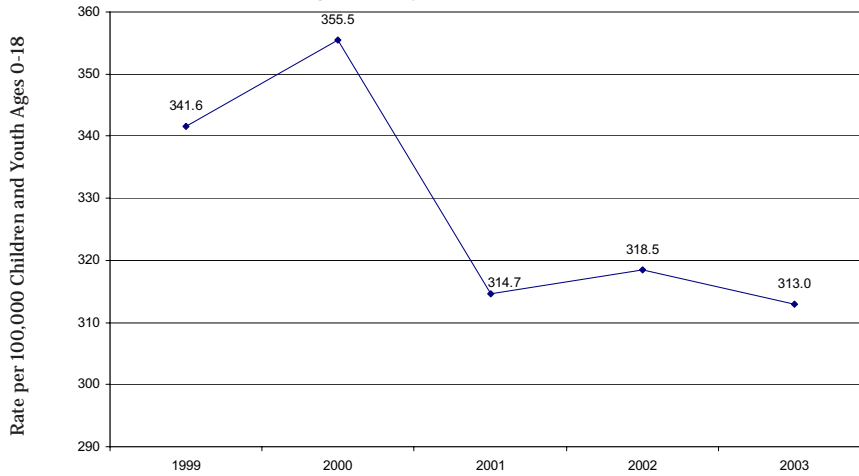
No race/ethnicity data were available for alcohol-related motor vehicles injuries and deaths.

## San Diego Measure by Region

No geographic data were available for unintentional injury hospitalizations and deaths.

## SAN DIEGO COUNTY MEASURE BY TREND

Rate of Unintentional Injury Hospitalizations and Deaths of Children and Youth in San Diego County: 1999-2003



Rate of Unintentional Injury Hospitalizations and Deaths has Decreased Notably Since 1999

### 2003 COMPARISON DATA

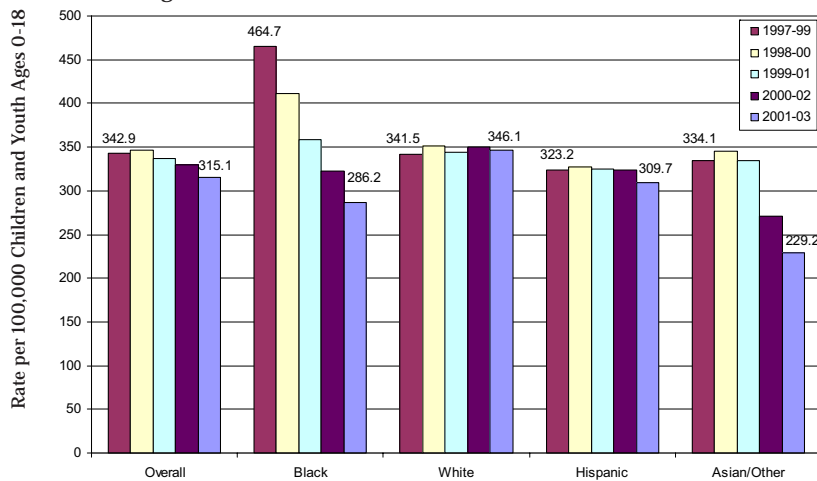
San Diego County	313.0
California	269.5
United States	NA

**Note:** Results that appear in this figure are slightly different than the results that in the 2003 Report Card due to revised estimates from Emergency Medical Services.

**Source:** County of San Diego, Public Health Services, Emergency Medical Services.

## SAN DIEGO COUNTY MEASURE BY RACE/ETHNICITY

Rate of Unintentional Hospitalized Injuries and Deaths in Children and Youth in San Diego County by Race/Ethnicity: 1997-2003 Three Year Averages

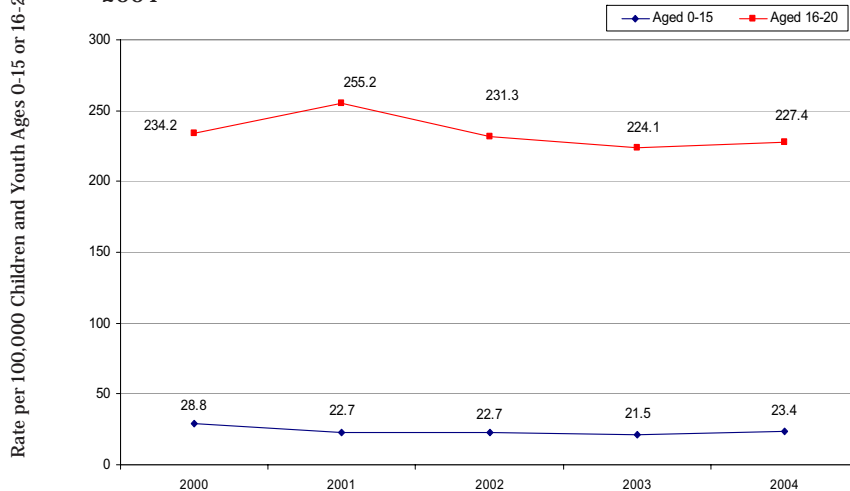


Unintentional Injury Hospitalizations and Deaths Have Continued to Decrease for Blacks, and Asian/Others While slightly Increasing for Whites

**Source:** County of San Diego, Public Health Services, Emergency Medical Services

## SAN DIEGO COUNTY MEASURE BY TREND

Rate of Children and Youth Aged 0-15 and 16-20 Injured or Killed in Alcohol-Related Motor Vehicle Crashes in San Diego County, 2000-2004



Since 2000, Alcohol-Related Motor Vehicle Injuries and Deaths have Decreased Notably for Children (Age 0-15) but Remained about the Same for Youth (Age 16-20)

### 2004 COMPARISON DATA

	Ages 0-15	Ages 16-20
San Diego County	23.4	227.4
California	22.9	178.9
United States	NA	NA

**Source:** County of San Diego, Health and Human Services Agency, Emergency Medical Services; Statewide Integrated Traffic Records System

# EDUCATIONAL ACHIEVEMENT

Educating children is one of the most important tasks we do as a community. Educational achievement reflects many aspects of a child's well-being. School problems correlate with poverty, dysfunctional families, substance abuse, behavior problems, early sexual activity and pregnancy.<sup>12</sup> In the 2004/05 school year, 42% of students in San Diego County public schools were enrolled in the free and reduced price meal program. Families with incomes below 185% of the federal poverty level qualify for this program, which was \$34,873 per year for a family of four in the 2004 guidelines.

**The four measures of Educational Achievement used in the Report Card are:**

1. Percent of Students Attending School Per Day
2. Rate of High School Seniors Who Graduate Annually
3. Percent of Students Scoring Proficient or Advanced on the English Language Arts Test of the California

Standards Tests (for Grades 3, 8 and 11)

4. Percent of Graduates Who Enrolled in College.

**1. Percent of Students Attending School Per Day**

*Why is the percent of students attending per day important?*

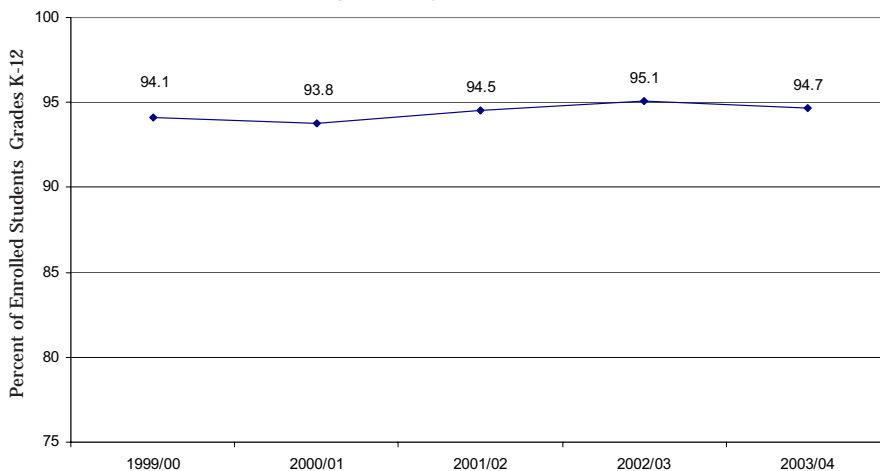
Regular school attendance helps to promote a student's likelihood of academic achievement. Students with attendance problems are more likely to drop out of school before graduating.

**San Diego County Rate & Number**

The average rate of students attending school per day in San Diego County public schools, grades K-12, for the 2003/04 school year was 94.7%. This is estimated to be 472,916 students in attendance per day. This means on average each day about one child will be absent in a typical classroom of 20 students.

**SAN DIEGO COUNTY MEASURE BY TREND**

Percent of Public School Students Attending School Per Day  
Grades K-12 in San Diego County: 1999/2000 - 2003/04



**Percent Attending Public School Remained About The Same**

**NO COMPARISON DATA AVAILABLE**

San Diego County (2003/04)	94.7%
California	NA
United States	NA

**Source:** California Department of Education, Education Demographics Unit; San Diego County Office of Education, Business Services Division.

## San Diego County Measure By Race/Ethnicity

No race/ethnic data were available.

## San Diego County Measure by Region

No geographic data were available.

### 2. Rate High Seniors Who Graduate Annually

*Why is the rate of high school seniors who graduate each year important?*

An incomplete education compromises a young person's future economic success and well-being. Dropping out of high school correlates with families who have lower incomes. The graduation rate is used under federal law, in addition to tested achievement, to hold high schools accountable for students' academic performance.

The graduation rate is calculated by dividing the number of high school graduates for a given school year by the sum of the number of students who dropped out of school during the previous four school years and the number of graduates for the given school year. The U.S. Department of Education defines a gradu-

ate as a person who receives a diploma in the given school year or the summer following that year. The term graduate does not include students earning high school completion equivalences (California High School Proficiency Examination or receiving a General Educational Development certificate). A dropout is defined as a student who was enrolled in grade 9, 10, 11 or 12 at a public school some time during the previous school year and left prior to completion of high school and has not returned, or did not enroll in the next grade to which they were assigned/expected to attend. A student is not considered a dropout if the student has transferred to another public school, enrolled in a private school, attending college, moved out of the United States, or has died.

### San Diego County Rate and Number

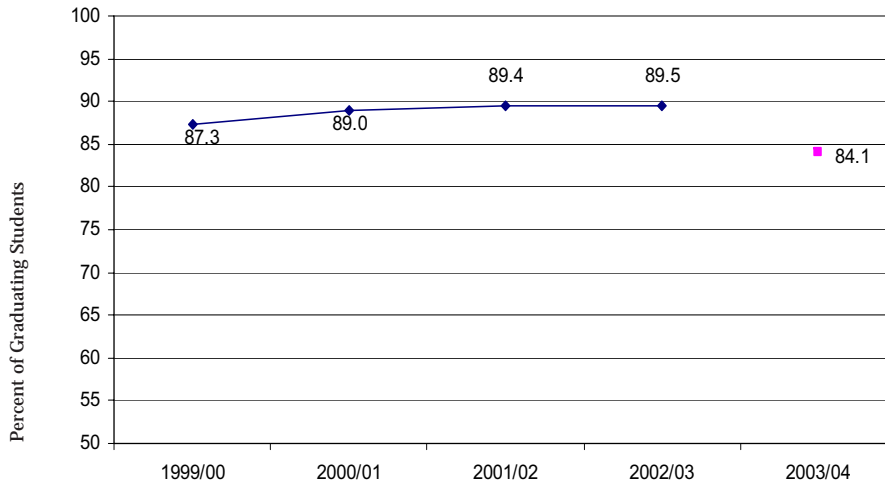
In the 2003/04 school year, the graduation rate was 84.1%; the number of high school graduates was 28,383 and the number of dropouts for the graduating class was 3,036.

### San Diego Measure by Region

No geographic data were available.

## SAN DIEGO COUNTY MEASURE BY TREND

Rate of High School Seniors Who Graduate Annually in San Diego County: 1999/00-2003/04



Due to the Change in the Definition of a High School Dropout, it is too Early to Report a Trend

#### 2003/04 COMPARISON DATA

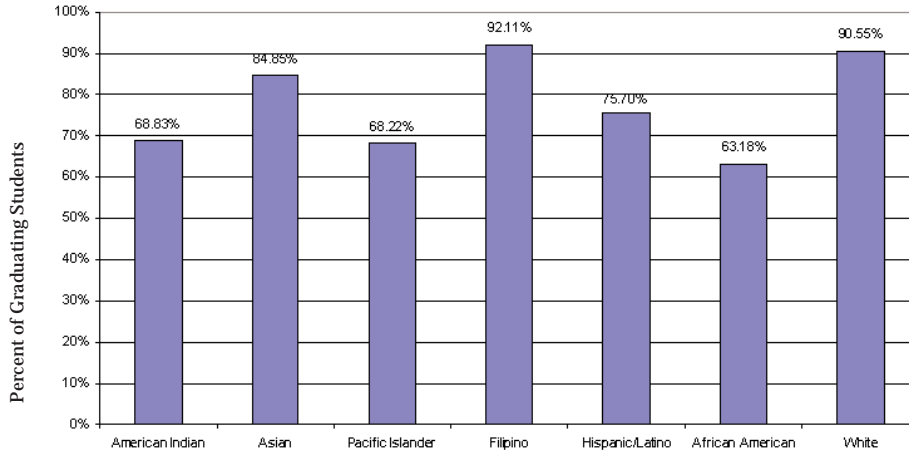
San Diego County	84.1%
California	85.3%
United States	NA

**Note:** Beginning in 2002/03 school year, the California Department of Education (CDE) has used the National Center from Educational Statistics' (NCES) definition of a dropout.

**Source:** California Department of Education, Education Demographics Unit.

## SAN DIEGO COUNTY MEASURE BY RACE/ETHNICITY

Rate of High School Seniors Who Graduate Annually by Race/Ethnicity:  
2003/04



**African Americans had the Lowest Graduation Rate in 2003/04**

Source: San Diego Office of Education, State of Schools 2003-2004.

### 3. Percent of Public School Students Taking the English Language Arts Test of the California Standards Test that Scored Proficient or Advanced (for Grades 3, 8 and 11)

*Why is the percent of students scoring proficient or advanced important?*

Reading and writing are two of the most important skills needed to do well in life. There are many factors, which determine a child's ability to read; these include the child's physical and mental health, family support, language, and schooling. In 2003/04, about 24% of students in San Diego County public schools were "English Language Learners," meaning they have limited English abilities.

Tested achievement is one of the primary measures used to hold public schools accountable for students' academic perform-

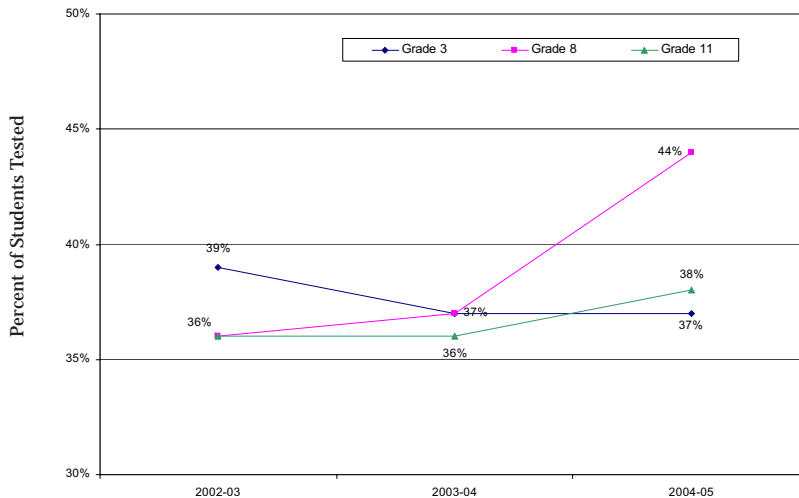
ance. The California Department of Education relies primarily on the California Standards Tests to assess student academic achievement. These tests are administered to students in California public schools and assess students' performance on California's Academic Content Standards. This measure reports the percent of students who scored proficient or advanced on the English Language Arts test, one of the California Standards Tests.

#### San Diego County Rate & Number

In the 2003/04 school year, 37% of 3rd grade students, 44% of 8th grade students, and 38% of 11th grade students in San Diego County scored proficient or advanced on the English Language Arts test of the California Standards Tests. This is estimated to be 13,974, 17,189 and 13,323 students respectively.

## SAN DIEGO COUNTY MEASURE BY TREND

Percent of Public School Students Scoring Proficient or Advanced on the English Language Arts Test in San Diego County: 2002/03-2004/05



**Although It Is Still Too Early To Report A Trend, Eighth Graders are Improving Faster than Third or Eleventh Graders**

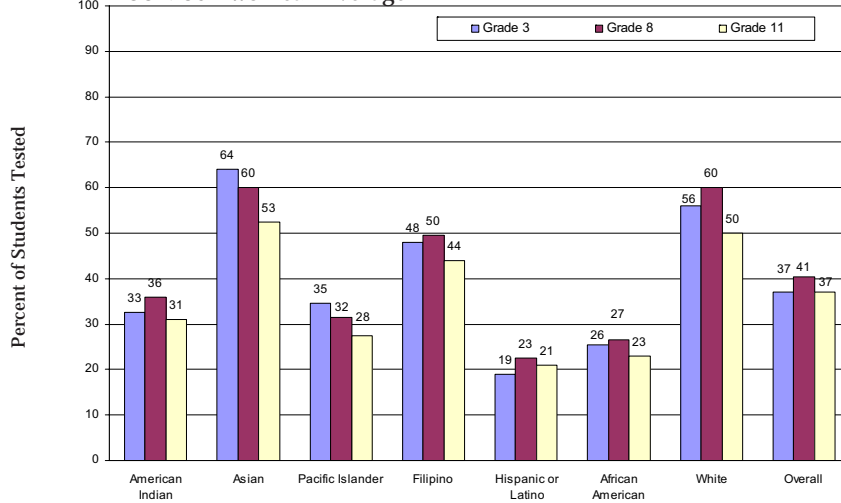
#### 2004/05 COMPARISON DATA

	Grades 3	8	11
San Diego County	37%	44%	38%
California	31%	39%	36%
United States	NA	NA	NA

Source: California Department of Education, Education Demographics Unit and the California Standardized Testing and Reporting Program.

## SAN DIEGO COUNTY MEASURE BY RACE/ETHNICITY

Percent of Public School Students Scoring Proficient or Advanced on the English Language Arts Test by Race/Ethnicity: 2002/03-2004/05 Two Year Average



Hispanic/Latinos and African Americans Continue to Have the Lowest Percentage of Students Scoring Proficient or Advanced

Source: California Department of Education, Standardized Testing and Reporting Program

### 4. Percent of Graduates Enrolled in College

Why is the percent of high school graduates enrolled in college important?

The percent of high school graduates enrolling in the California Community College, California State University, and University of California higher educational systems is important because it is a gauge for the future success of San Diego County's youth. According to the Bureau of Labor Statistics, in 2005, the average weekly earning potential of a high school graduate 25 years or older is \$583, while the average weekly income of a col-

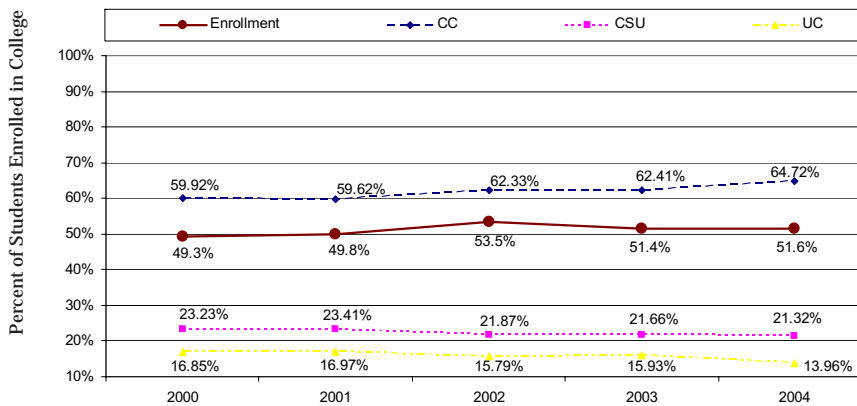
lege graduate in the same age range is \$1,014.

### San Diego County Rate & Number

The percent of public high school graduates in the 2003/04 school year who enrolled in college was 51.6% of 28,383 high school graduates.

## SAN DIEGO COUNTY MEASURE BY TREND

Percent of High School Graduates Enrolled in Community College, California State University, and University of California Systems: 2000-2004



Percent of High School Graduates Enrolled in College Has Increased Since 2000

### 2004 COMPARISON DATA

San Diego County	51.6%
California	54.0%
United States	NA

Note: These data include first time freshman under 19 years of age enrolled in college.

Source: California Postsecondary Education Commission (CPEC). Graduation data are from the California Basic Educational Data System (CBEDS) at the California Department of Education.

### San Diego County Measure by Race/Ethnicity

No race/ethnic data are presented.<sup>13</sup>

### San Diego County Measure by Region

No geographic data were available.

# APPENDIX

## DEFINITIONS & DATA SOURCES

### ECONOMIC SECURITY

**1. Percent Unemployed:** Average percent of the civilian labor force that is unemployed per year.

**Sources:** United States Department of Labor, Bureau of Labor Statistics. More recent estimates may be available at: [www.bls.gov/](http://www.bls.gov/). California Employment Development Department: [www.calmis.cahwnet.gov/](http://www.calmis.cahwnet.gov/).

**2. Percent of Children and Youth Living in Poverty:** Percent of children under age 18 living below the federal poverty level.

**Sources:** U.S. Census Bureau, 1993-2000 estimates from the Small Area Income & Poverty Estimates Branch and 2001-2004 estimates from the American Community Survey Branch. More recent estimates may be available at [www.census.gov](http://www.census.gov).

**3. Rate of Children and Youth Receiving CalWORKs Assistance:** Average monthly number of children ages 0-17 that are receiving CalWORKs (public assistance) per 1,000 children ages 0-17 per state fiscal year.

**Sources:** County of San Diego, Health and Human Services Agency, Regional Program Support Division analysis of data provided by the State of California, Department of Social Services, Research and Development Division. County of San Diego, Health and Human Services Agency, Strategy and Planning Division analysis of (1) San Diego County population data provided by SANDAG and (2) California population estimates obtained from the U.S. Census Bureau, Population Estimates Branch, State Estimate By Demographic Characteristics - Age, Sex, Race, and Hispanic Origin Vintage 2004 (July 1, 2000 through July 1, 2004) Files. U.S. Census population estimates are available at [www.census.gov](http://www.census.gov).

### GOOD HEALTH

**1. Percent of Babies with Low Birthweight:** Annual percent of live born infants weighing less than 2,500 grams (5 1/2 lbs.) at birth.

**Sources:** County of San Diego, Health and Human Services Agency, Public Health Services. Maternal, Child and Family Health Services' analysis of data provided by the State of California, Department of Health Services, Center for Health Statistics, Vital Statistics Section, Birth Statistical Master Files; National Center for Health Statistics. Selected data are available on the Internet from the California Department of Health Services' Center for Health Statistics at [www.dhs.ca.gov/hisp/chs/default.htm](http://www.dhs.ca.gov/hisp/chs/default.htm).

**2. Rate of Births to Teens:** Number of births to teenagers 15-17 years old per 1,000 females ages 15-17 per year.

**Sources:** County of San Diego, Health and Human Services Agency, Public Health Services. Maternal, Child & Family Health Services' analysis of data provided by the State of California, Department of Health Services, Center for Health Statistics, Vital Statistics Section, Birth Statistical Master Files. Selected data are available on the Internet from the California Department of Health Services' Center for Health Statistics at [www.dhs.ca.gov/hisp/chs/default.htm](http://www.dhs.ca.gov/hisp/chs/default.htm).

**3. Percent of San Diego Unified School District Youth Who Reported They Attempted Suicide:** Percent of 9-12 grade students surveyed that reported an attempted suicide one or more times during the past 12 months.

**Source:** San Diego City Schools, Educational Services Division, Comprehensive Health, Physical Education, and Wellness; Centers for Disease Control and Prevention, Youth Risk Behavior Survey. Additional results from the CDC's Youth Risk Behavior Survey (1995-2004) are available on the Internet at [www.cdc.gov/yrbs](http://www.cdc.gov/yrbs).



#### **4. Rate of Youth Hospitalized for Self-Inflicted Injuries:**

The rate of youth (ages 13-18 years) hospitalized for self-inflicted, non-fatal injuries.

**Source:** California Department of Health Services, Epidemiology and Prevention for Injury Control branch. Additional data on fatal and non-fatal injuries in California from the EPIC branch are available on the Internet at [www.applications.dhs.ca.gov/epicdata/default.htm](http://www.applications.dhs.ca.gov/epicdata/default.htm).

**5. Percent of Youth that Reported Cigarette Use:** Percent of high school students surveyed who reported they smoked cigarettes on one or more of the past 30 days.

**Source:** San Diego County Office of Education, Safe Schools Unit's Analysis of the 2003 California Healthy Kids Survey Results for San Diego County.

**6. Percent of Youth that Reported Alcohol Use:** Percent of high school students surveyed that reported they had 1 or more drinks of alcohol on one or more of the past 30 days.

**Source:** San Diego County Office of Education, Safe Schools Unit's Analysis of the 2003 California Healthy Kids Survey Results for San Diego County.

**7. Percent of Youth that Reported Marijuana Use:** Percent of high school students surveyed who reported they had used marijuana one or more times during the past 30 days.

**Source:** San Diego County Office of Education, Safe Schools Unit's Analysis of the 2003 California Healthy Kids Survey Results for San Diego County.

#### **APPROPRIATE ACCESS TO SERVICES**

**1. Percent of Households with Children Under Age 12 that Reported Adequate Access to Childcare:** Percent of surveyed households with children under 12 that reported a need for childcare and able to obtain all the childcare needed.

**Source:** San Diego County Health and Human Services Agency, Public Health Services, Community Epidemiology analysis of the results from the United Way Outcomes & Community Impact Program's 2003 Survey. Results for the 2003 United Way Survey available on the Internet at [www.unitedway-sd.org/matters/reports.org](http://www.unitedway-sd.org/matters/reports.org).

**2. Percent of Young Children Who Are Adequately Immunized (HHSA Survey):** Percent of surveyed children that were up-to-date on 4:3:1 series (DTP, Polio, MMR/MCV) between 19 and 36 months of age.

**Source:** County of San Diego, HHSA, San Diego Immunization Initiative, Immunization Random Digit Dialing Survey.

**3. Percent of Young Children Who Are Adequately Immunized (CDC Survey):** Percent of surveyed children that were up-to-date on 4:3:1 series (DTP, Polio, MMR/MCV) between 19 and 36 months of age.

**Source:** Centers for Disease Control, National Immunization Survey. The HHSA Survey uses a larger sample size than the CDC Survey. Results from the CDC are available on the Internet from the CDC's National Immunization Program at [www.cdc.gov/nip/](http://www.cdc.gov/nip/).

**4. Percent of Households with Children and Youth with Health Insurance:** Includes children with private or government health insurance including employment provided, privately purchased, Medicare, Healthy Families, Champus, and Medi-Cal.

**Sources:** San Diego County Health and Human Services Agency, Public Health Services, Community Epidemiology analysis of the results from the United Way Outcomes & Community Impact Program's 2003 Survey, results for the 2003 United Way Survey available on the Internet at [www.unitedway-sd.org/matters/reports.org](http://www.unitedway-sd.org/matters/reports.org).

**5. Percent of Children and Youth with Health Insurance (California Health Interview Survey):** Percent of children ages 0-17 who are currently covered by health insurance, as reported by an adult proxy.

**Sources:** California Health Interview Survey, Center for Health Policy Research, University of California, Los Angeles. Results from the 2003 CHIS are available on the Internet at [www.chis.ucla.edu/](http://www.chis.ucla.edu/).

#### **SAFE ENVIRONMENT**

**1. Rate of Substantiated Cases of Child Abuse/Neglect:** Annual number of children ages 0-17 determined by a social worker to have been a victim of child abuse/neglect per 1,000 children ages 0-17 per year.

**Source:** Needell, B., et al., Child Welfare Services Reports for San Diego County and California, July 2005 obtained from the University of California at Berkeley Center for Social Services Research website at [cssr.berkeley.edu/CWSCMSreports/](http://cssr.berkeley.edu/CWSCMSreports/); County of San Diego, Health and Human Services Agency, Children Welfare Services analysis of County data from CWS/CMS.

**2. Rate of Domestic Violence Reports:** Annual number of law enforcement responded domestic violence cases and calls per 1,000 households.

**Source:** San Diego County, Health and Human Services Agency, Strategy and Planning Division's analysis of data obtained from the Automated Regional Justice Information System (ARJIS), with the assistance of the San Diego County District Attorney's Office; Population estimates from SANDAG.

**3. Rate of Court Cases Filed Against Youth Offenders:** Number of delinquency petitions filed in Juvenile Court per 1,000 children ages 10-17 per year.

**Source:** County of San Diego, Probation Department.

**4. Rates of Violent Crime Victimization of Children and Youth (Ages 0-11):** Number of victims of violent crimes (homicide, sexual victimization, robbery by force, and aggravated assault) per 10,000 children ages 0-11 and 12-17, respectively, per year.

**Source:** San Diego County, Health and Human Services Agency, Strategy and Planning Division analysis of data obtained from Automated Regional Justice Information System (ARJIS) with the assistance of the San Diego Data Processing

**5. Rates of Violent Crime Victimization of Children and Youth (Ages 12-17):** Number of victims of violent crimes (homicide, sexual victimization, robbery by force, and aggravated assault) per 10,000 children ages 0-11 and 12-17, respectively, per year.

**Source:** San Diego County, Health and Human Services Agency, Strategy and Planning Division analysis of data obtained from Automated Regional Justice Information System (ARJIS) with the assistance of the San Diego Data Processing Corporation and SANDAG; Population estimates from SANDAG.

**6. Rate of Unintentional Injury Hospitalizations and Deaths of Children and Youth:** Number of unintentional injuries (requiring hospitalization) and deaths due to unintentional injuries among children and youth ages 0-18 per 100,000 children and youth ages 0-18 per year.

**Sources:** County of San Diego, Health and Human Services Agency, Emergency Medical Services analysis of data obtained from the: State of California, Department of Health Services, Office of Statewide Health Planning and Development, Hospital Discharge Data set; State of California, Department of Health Services, Center for Health Statistics, Vital Statistics Section, Death Statistical Master Files; State of California, Department of California Highway Patrol, Information Services Unit; Statewide Integrated Traffic Records System.

**7. Rate of Injuries and Deaths Due to Alcohol-Related Motor Vehicle Crashes:** The number of children and youth ages 0-15 and 16-20 killed or recorded by law enforcement as injured in motor vehicle crashes related to alcohol per 100,000 children and youth ages 0-15 and 16-20, respectively, per year.

**Sources:** County of San Diego, Health and Human Services Agency, Emergency Medical Services analysis of data obtained from the: State of California, Department of Health Services, Office of Statewide Health Planning and Development, Hospital Discharge Data set; State of California, Department of Health Services, Center for Health Statistics, Vital Statistics Section, Death Statistical Master Files; State of California, Department of California Highway Patrol, Information Services Unit; Statewide Integrated Traffic Records System.

## EDUCATIONAL ACHIEVEMENT

**1. Percent of Students Attending School Per Day:** Average percent of public school students enrolled in kindergarten through 12th grade that attend school each instructional day in one school year.

**Source:** California Department of Education, Education Demographics Unit, available on the Internet at <http://data1.cde.ca.gov/dataquest>; San Diego County Office of Education, Business Services Division, Pupil Accounting, available on the Internet at <http://www.sdcoe.k12.ca.us>.

**2. Rate of High School Seniors Who Graduate Annually:** Percent of high school seniors that graduate (receive a diploma) each school year.

**Source:** California Department of Education, Educational

**3, 4, & 5. Percent of Students Scoring at or Above Proficient on the English Language Arts Test of the California Standards Tests (Grades 3, 8, 11):** Percent of Students Scoring at or Above Proficient on the English Language Arts Test in San Diego County: 2002/03- 200/05.

**Source:** California Department of Education, Standardized Testing and Reporting Program, available on the Internet at <http://star.cde.ca.gov>.

**6. Percent of High School Graduates Enrolled in Community College, California State University, and University of California:** Percent of high school graduates who are first-time freshman under 19 years of age who are enrolled in college.

**Source:** California Postsecondary Education Commission, available at <http://www.cpec.ca.gov>. Graduation data are available at California Department of Education, California Basic Education Data System (CBEDS), <http://data1.cde.ca.gov/dataquest>.

## DEMOGRAPHIC AND POPULATION DATA

San Diego County and California Population and Race/Ethnicity Statistics.

**Sources:** County of San Diego, Health and Human Services Agency analysis of data obtained from the San Diego Association of Governments ([www.sandag.gov](http://www.sandag.gov)); State of California, Department of Finance ([www.dof.ca.gov](http://www.dof.ca.gov)); and the U.S. Census Bureau ([www.census.gov](http://www.census.gov)).

Note: All population estimates for 2000 - 2004 have been revised to reflect the 2000 Census. However, population estimates used to calculate rates for the 1990's were not revised to reflect the results of the 2000 Census unless specifically noted.

# ACKNOWLEDGEMENTS

We would like to thank the following individuals for providing the data and technical assistance that is included in this document.

## **SOCIAL SERVICES ADVISORY BOARD CHILD WELL-BEING SUBCOMMITTEE**

### **Bob Brandenburg**

Social Services Advisory Board  
County of San Diego

### **Cynthia Burke**

### **Elisabeth Howard**

San Diego Association of Governments  
(SANDAG)

### **Pat Faucher**

Reach Out

### **Robert Fellmeth**

University of San Diego School of Law

### **Dale Fleming**

Health & Human Services Agency  
County of San Diego

### **Greg Knoll**

Legal Aid Society

### **Roseann Myers**

### **Jamie Beam**

Commission on Children, Youth, & Families  
County of San Diego

### **Tom Packard**

School of Social Work  
San Diego State University

### **Sandy Pugliese**

Grossmont Hospital  
Sharp Healthcare

### **Peter M. Schiff**

Ramona Unified School District

### **Marilyn Wheeler**

Coronado School District Association  
of California School Superintendents

### **Dr. Amethyst Cureg**

Chief, Maternal, Child, & Families  
Health Services  
County of San Diego

### **Phyllis Elkind**

Coordinator, Child Health  
Disability Prevention  
County of San Diego

### **Rich Swanson**

San Diego County Office of Education

## **COUNTY ADVISORY GROUPS**

Social Services Advisory Board  
Alcohol & Drug Services Advisory Board  
Commission on Children, Youth, & Families  
Health Services Advisory Board

## **DATA SOURCES AND EXPERTS**

### **Donna Allnutt**

### **Beth Jarosz**

San Diego Association of Governments  
(SANDAG)

### **Marge Kleinsmith**

P.E., Health and Athletics  
San Diego City Schools

### **Kathy Sholan**

Safe Schools Unit  
San Diego County Office of Education

## **HEALTH AND HUMAN SERVICES AGENCY**

Doug Ailshie

Tamara Bannan

Nancy Bowen

Tom Deangelis

Lynn Eldred

Steve Gardner

Lacey Hicks

Verona Hines

Nick Hodnett

Sutida Jariangprasert

Jeff Johnson

David Lindsay

Jennifer Mallory

Chris McClean

Jenny Pietila

Lesley Pinka

Doreen Pires-Gilbert

Anabel Poole

Leslie Ray

Eva Rubin

Maria Sanders

Alan Smith

Leesa Solit

Cynthia Stalmaster

Sandra Strech

Jean Vukotich

Wenrong Wang

Jackie Werth

Joan Zinser

## **PUBLIC SAFETY GROUP**

Nicole Alejandre

Stephen Jaszkwiaak

Julie Wartell

## REFERENCES

1. Simmes DR, Blaszcak MR, Kurtin PS, Bowen NL, and Ross RK (2000): Creating a Community Report Card: The San Diego Experience. *American Journal of Public Health*, 90(6): 880-2.
2. Betson, David M., Michael, Robert T. (1997, Summer/Fall). Why So Many Children Are Poor. *The Future of Children, Children, and Poverty*. Center for the Future of Children, The David and Lucile Packard Foundation, Los Altos, CA: 7(2):25-39.
3. Institute of Medicine. Durch JS, Bailey LA and Stoto MA (eds.). 1997. *Improving Health in the Community: A Role for Performance Monitoring*. Washington D.C.: National Academy Press.
4. The National League of Cities, National School Boards Association, Joe DiMaggio Children's Hospital, Youth Crime Watch of America. (1999). *Ten Critical Threats to America's Children: Warning Signs for the Next Millennium: A Report to the Nation*. Alexandria, VA.
5. Kirby, D. (1997). *No Easy Answers: Research Findings on Programs to Reduce Teen Pregnancy*. Washington, DC: The National Campaign to Prevent Teen Pregnancy.
6. Lowinson, J., Ruiz, P., Millman, R., Langrod, J. (1997). *Substance Abuse, A Comprehensive Textbook*. Baltimore, MD: Williams & Wilkin.
7. California Center for Health Improvement (2000). *Field Lessons: Strategies to Support California's Children and Families First Act. Promoting Oral Health in Young Children: A Prop 10 Opportunity 1(2): 1*.
8. United States Department of Labor, Bureau of Labor Statistics. *Employment Characteristics of Families in 2003 Table 5 2002-03 annual averages*.  
<http://stats.bls.gov/news.release/pdf/famee.pdf>
9. San Diego County Child Care and Development Planning Council. *Meeting the Child Care Needs of San Diego County Families*. January 2000
10. Center for Disease Control and Prevention. (1995). *Health Insurance Coverage and Receipt of Preventive Health Services-United States, 1993. Morbidity and Mortality Weekly Report 44:219-225*.
11. O'Campo, P. (1998). *Abuse Against Women by Their Intimate Partners. Perinatal and Women's Health Issue Summary 5*. Baltimore, MD.: Women's and Children's, Health Policy Center, Johns Hopkins University.
12. Mendel, R.A. (1995). *Prevention or Pork? A Hard-Headed Look at Youth Oriented Anti-Crime Programs*. Washington, DC: American Youth Policy Forum.

**Please direct inquiries or feedback on the Report Card to:**

County of San Diego  
Health and Human Services Agency  
(619) 685-2244  
or [Jenny.Pietila@sdcounty.ca.gov](mailto:Jenny.Pietila@sdcounty.ca.gov)

Prior Report Cards (including technical and map supplements), can be obtained on the County and Agency websites at the following address:

[www.sdcountyreportcard.org](http://www.sdcountyreportcard.org)

County of San Diego Health and Human Services Agency • (619) 685-2244 • [Jenny.Pietila@sdcounty.ca.gov](mailto:Jenny.Pietila@sdcounty.ca.gov)

TO REVIEW THE REPORT CARD ONLINE:  
[sdcountyreportcard.org](http://sdcountyreportcard.org)