

**San Diego County  
Child and Family Health & Well-Being  
Report Card**

**Technical Supplement  
October 2001**

**County of San Diego  
Health and Human Services Agency**

**Contract Support Provided By  
Children's Hospital and Health Center  
Center for Child Health Outcomes**

## PREFACE

The San Diego County Child and Family Health and Well-Being Report Card 2001 and this technical supplement are organized under five Outcomes: Economic Security, Good Health, Appropriate Access to Care, A Safe Environment, and Educational Achievement. Each Outcome has Measures that monitor the progress toward achieving the Outcome. This technical supplement to the 2001 Report Card provides definitions of the 26 measures used in the Report Card, the sources from which this information was obtained and pertinent calculations used to derive the rates presented. The data for each measure are provided in tabular form. Where available, historical data, state and/or national rates and race/ethnicity data are provided for comparison. Charts are included to display data points over time and to facilitate comparisons between local, state and/or national rates as well as race/ethnicity categories. Using a standard map, sub-county data (where available) are displayed within the six geographic service regions of the County of San Diego Health and Human Services Agency (HHS). These maps allow comparison between regional rates and between each region and the overall county rate.

The history of the development of the Report Card is contained within the San Diego County Child and Family Health and Well-Being Report Card 1999. The 1999, 2000 and 2001 Report Cards and supplements can be obtained by calling (619) 692-8828 or on the internet at <http://www.co.san-diego.ca.us/cnty/cntydepts/health/services/rptcard>. After careful consideration, feedback and consultation, some measures that were used in the 2000 Report Card have been modified or deleted (measure was redundant or data was not consistently valid) and some new measures appear in the 2001 Report Card. Any revisions from data contained in the 2000 Report Card and its technical supplement are noted where applicable in this document. Modified or deleted measures include the following:

- Rate of Children and Youth in Families Identified as Homeless – deleted
- Percent of Youth that Use Substances, Alcohol Binge Drinking – changed to Percent of Students who Reported Drinking Alcohol

The Report Card is a compilation of existing information obtained from a wide variety of data sources including county, state, and federal government agencies, academic institutions as well as advocacy and charitable organizations. Every effort is made to present the most timely, accurate and consistent information available. However, due to variations in data collection methods and population sampling, the data contained in the Report Card must be examined in relation to the definitions, and reference periods presented for each individual measure. Brief methodological descriptions are provided as considered relevant to interpretation of each measure but this document does not contain a comprehensive discussion or analysis of possible data limitations.

Following are some of the considerations that must be made when evaluating these data:

**Data Limitations:** The Report Card is a compilation of secondary data, that is, the data it contains have been acquired from existing sources. Another way to say this is that there was no data collected from scratch for this project. Although the quality of the data chosen for inclusion in the Report Card has been carefully reviewed and deemed acceptable by advisory

groups, some of the data may have limitations. Procedures and practices for collecting and recording data, surveying techniques, and population sampling each have an effect on the validity and reliability of subsequent data analysis and reported results. It is important to note that the potential exists, as within any estimates based on population sampling, for under or over counting of persons, events, or conditions. Over time, factors such as changes in laws or policies or media attention may also influence the measures contained in the Report Card. It is beyond the scope of this technical supplement however to provide a detailed analysis of the multiple factors that may affect each of the presented measures.

**Rates:** Most of the data are described in the form of rates (a percent is also a type of rate). A rate is a measure of some event or condition for a certain population, during a specific time period – it may be referred to as the observed rate. Using a rate allows the reader to compare across time, among geographic areas or among different groups while adjusting for the differences in population sizes across time or across the geographic areas or subgroups within the population.

**Trends:** Historical data are presented for some measures in the interest of examining trends. Data over time are displayed in trend charts. Where possible, trend charts contain at least five data points including the most current data year. However, some data sources provided fewer than five years of data and some did not have annual data available (or have only recently begun to furnish annual data). At least some historical data were available for all but one (subsidized child care spaces) of the 26 measures.

**95% CI:** The 95% confidence interval (95% CI) of rates has been calculated for measures of known sample size. This confidence interval accounts for variability in the observed data and provides a range of values that may be possible for each observed rate. The confidence interval indicates with 95% certainty that the true rate falls within this range of values. The differences between two rates can be considered statistically significant if the range of values within their confidence intervals do not overlap.

**Averages:** Although it is useful to stratify data by another variable such as race or geographic region, the smaller number of events results in random fluctuations in the rate from year-to-year. In order to smooth out the fluctuations and stabilize the rates, race/ethnic and geographic data have been averaged over the most recent three years.

**Race/Ethnicity Data:** Rates among several race/ethnic categories were available for 15 of the measures. Race/ethnic categories were determined by the source of data and/or availability of population estimates within each category. Some categories were combined in order to calculate rates using available population estimates.

**Maps:** Data within each of the six HHS geographic service regions were available for 9 of the measures and maps are displayed for each of these measures. The rates within regions are compared using graduated color, that is, regions are ordered according to the values of their rates. The region with the highest rate for the particular measure will have the darkest shade of color on the map.

**State and National Comparisons:** California and/or national statistics are provided, where available, for comparison to county rates. State and/or national comparison data were available for 19 measures.

Rates are based on population data specific to the age, sex, race/ethnicity, and region indicated. The population estimates used to calculate rates for the measures in the 2001 Report Card and in this technical supplement have not been revised to reflect the results of the 2000 Census. San Diego County population estimates used as denominators in the calculation of rates were obtained from the San Diego Association of Governments, (*July 1 Population Estimates by Ethnicity and Single Year of Age, San Diego Region*, January 13, 2000). California population estimates used as denominators for statewide rate calculations were obtained from the State of California, Department of Finance (*Race/Ethnic Population with Age and Sex Detail, 1970-2040*, December 1998). New demographic data from the 2000 Census are listed in the Demographic Data section of this document on page 87.

## TABLE OF CONTENTS

<b>ECONOMIC SECURITY</b> .....	<b>5</b>
PERCENT UNEMPLOYED .....	5
PERCENT OF CHILDREN AND YOUTH LIVING IN POVERTY .....	7
RATE OF CHILDREN AND YOUTH RECEIVING CALWORKS ASSISTANCE.....	10
<b>GOOD HEALTH</b> .....	<b>14</b>
PERCENT OF BABIES WITH LOW BIRTHWEIGHT .....	14
RATE OF TEEN BIRTHS.....	19
PERCENT OF YOUTH THAT ATTEMPTED SUICIDE AND NUMBER OF YOUTH SUICIDES .....	25
PERCENT OF YOUTH THAT USE SUBSTANCES: CIGARETTE USE, ALCOHOL USE, MARIJUANA USE.....	29
<b>APPROPRIATE ACCESS TO SERVICES</b> .....	<b>37</b>
NUMBER OF PUBLICLY FUNDED SUBSIDIZED CHILD CARE SPACES .....	37
PERCENT OF YOUNG CHILDREN THAT ARE ADEQUATELY IMMUNIZED .....	38
PERCENT OF CHILDREN AND YOUTH WITH HEALTH INSURANCE .....	42
<b>SAFE ENVIRONMENT</b> .....	<b>46</b>
RATE OF SUBSTANTIATED CASES OF CHILD ABUSE/NEGLECT .....	46
RATE OF DOMESTIC VIOLENCE REPORTS.....	50
RATE OF COURT CASES FILED AGAINST YOUTH OFFENDERS.....	54
RATE OF VIOLENT CRIME VICTIMIZATION OF CHILDREN AND YOUTH .....	58
RATE OF UNINTENTIONAL INJURIES AND DEATH DUE TO UNINTENTIONAL INJURIES OF CHILDREN AND YOUTH .....	61
RATE OF CHILDREN AND YOUTH KILLED OR INJURED IN ALCOHOL/DRUG-RELATED MOTOR VEHICLE CRASHES .....	66
<b>EDUCATIONAL ACHIEVEMENT</b> .....	<b>72</b>
PERCENT OF STUDENTS THAT DROP OUT OF HIGH SCHOOL ANNUALLY .....	72
PERCENT OF STUDENTS ATTENDING SCHOOL PER DAY.....	76
PERCENT OF STUDENTS TAKING THE STANFORD-9 TEST THAT SCORED AT OR ABOVE THE 50 <sup>TH</sup> NPR IN READING .....	78
PERCENT OF PUBLIC HIGH SCHOOL SENIORS THAT HAVE TAKEN THE SAT .....	84
<b>DEMOGRAPHIC DATA</b> .....	<b>87</b>

## ECONOMIC SECURITY

### Percent Unemployed

**Definition:** Average percent of the civilian labor force that is unemployed per year. An unemployed person is one who does not have a job and who is actively looking for work. All labor force data, including the rate, concern the non-institutional, civilian population, 16 years of age and older.

**Source:** State of California, Employment Development Department, Labor Market Information Division. Accessed via the Internet at <http://www.calmis.cahwnet.gov>

**Methodology/Calculation:** Annual unemployment percentages are based on estimates of labor force data. Sources for estimating the labor force include the United States Census Bureau's Current Population Survey, the Current Employment Statistics survey from the United States Bureau of Labor Statistics and state unemployment insurance data. The percent unemployed tends to vary from month to month for many reasons; therefore, annual unemployment percentages are based on monthly labor force data that have been averaged for the year. The average number of unemployed civilians is divided by the average number of civilians in the labor force each year (those persons employed as well as those unemployed are included in the labor force as estimated by the Employment Development Department each month). This number is then multiplied by 100 for the percentage. Percentages were calculated using San Diego County and California data. The results of these calculations were rounded up to the first decimal place. Due to the derivation of these estimates from survey data and other data sources, standard confidence intervals could not be validated and are not presented.

#### Data:

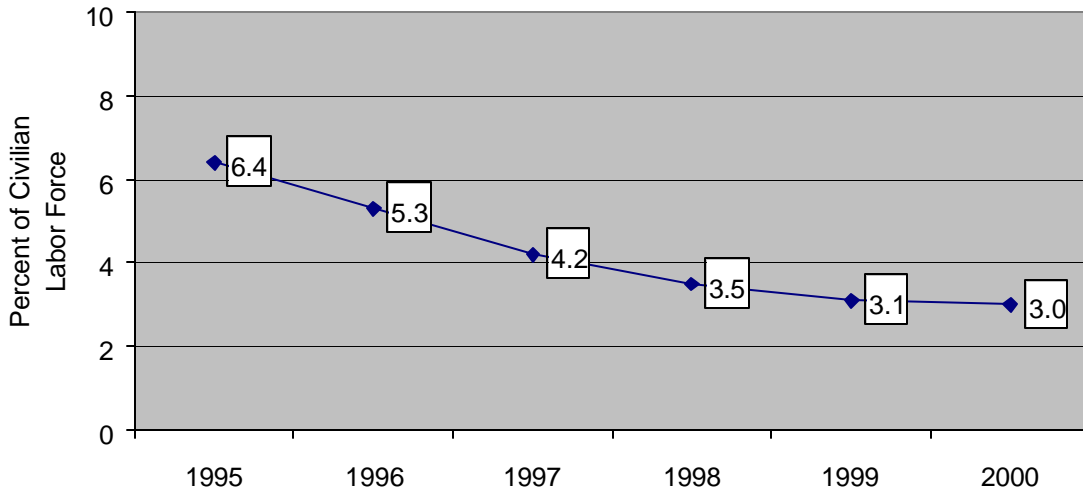
Average percent unemployed in San Diego County and California, 1995-2000

Year	San Diego County			California		
	Civilian Labor Force	Number Unemployed	Percent Unemployed	Civilian Labor Force	Number Unemployed	Percent Unemployed
1995	1,233,900	78,600	6.4	15,412,200	1,209,400	7.8
1996	1,241,200	65,300	5.3	15,511,600	1,120,100	7.2
1997	1,285,000	54,300	4.2	15,947,300	1,004,700	6.3
1998	1,319,900	46,400	3.5	16,323,900	968,200	5.9
1999	1,358,200	41,900	3.1	16,585,900	864,200	5.2
2000	1,404,100	42,000	3.0	17,090,800	845,200	4.9

Note: These data have been updated by the Employment Development Department and may vary from those presented in previous Report Card publications.

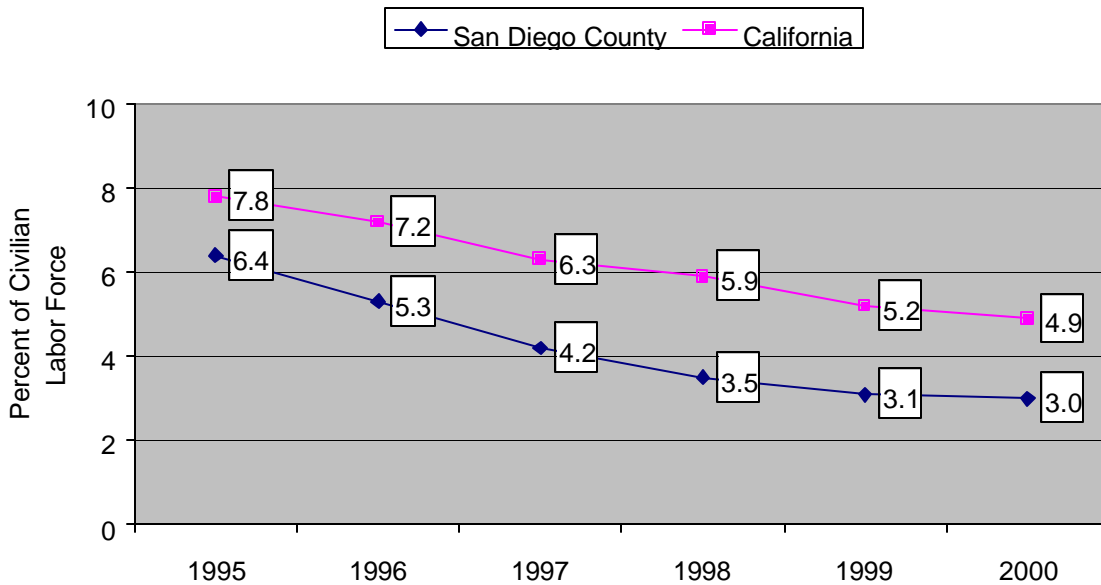
Source: State of California, Employment Development Department, Labor Market Information Division

**Average Percent of People Unemployed in San Diego County:  
1995-2000**



Source: State of California, Employment Development Department, Labor Market Information Division

**Average Yearly Percent Unemployed in San Diego County and  
California: 1995-2000**



Source: State of California, Employment Development Department, Labor Market Information Division

Note: Unemployment data for San Diego County by race/ethnicity are not available. Data within the Health and Human Services Agency regional areas are also not available.

## Percent of Children and Youth Living in Poverty

**Definition:** Percent of children ages 0-17 living below the federal poverty level

**Sources:** San Diego Association of Governments (SANDAG); United States Census Bureau

**Methodology/Calculation:** Estimating the poverty rate for a specific age group such as children under age 18 is complex and requires information about the age group population, family size, and income relative to a set of several thresholds that change annually. The Census Bureau initiated the Small Area Income and Poverty Estimates (SAIPE) program to update selected income and poverty estimates between the decennial census for states and counties. Administration of Federal programs and the allocation of Federal funds to local areas require current information on income and poverty. SAIPE relies on data from income tax returns, counts of food stamp participants, data from the Bureau of Economic Analysis (BEA), decennial census estimates, intercensal population estimates, and the Annual Demographic Survey. An overview of SAIPE is at <http://www.census.gov/hhes/www/saipe/overview.html>. The most current available estimate of child poverty in San Diego County, at the time of this report, was 22.0% in 1997.

Each year in March, the Census Bureau conducts its Annual Demographic Survey (a supplement to the Current Population Survey), the primary annual source of detailed information on income and work experience in the United States. The survey provides data for the U.S. and some data for states. Sample sizes are too small to generate reliable estimates for most metropolitan areas. For example, the March 1999 survey only included 241 persons under age 18 in the San Diego region. A description of the Annual Demographic Survey is at <http://www.bls.census.gov/cps/ads/adsdes.htm>. The 1997 and 1999 child poverty estimates for California, based on the Annual Demographic Survey, were 26.4% and 21.1%, respectively, representing a decrease of 20.1% in the statewide poverty rate between those years.

SANDAG has produced an estimate for the 1999 San Diego County child poverty rate based on the Census Bureau SAIPE 1997 estimate and statewide trends in child poverty. To confirm that there have been similar trends in income growth between the State of California and the San Diego region during the 1990's, SANDAG analyzed U.S. Bureau of Economic Analysis per capita income data and California Franchise Tax Board adjusted gross income data. Using this evidence, SANDAG's method assumes that the child poverty estimate for the region will change at the same rate as the statewide child poverty estimate from the Annual Demographic Survey between 1997 and 1999. More specifically, the following equation was used to prepare the 1999 child poverty estimate for the San Diego region:

$$\text{KIDPOV99} = \text{KIDPOV97} * (\text{KIDPOVCAL99} / \text{KIDPOVCAL97})$$

Where

KIDPOV99 = the San Diego County child poverty rate in 1999

KIDPOV97 = the San Diego County child poverty rate in 1997

KIDPOVCAL99 = the California child poverty rate in 1999

KIDPOVCAL97 = the California child poverty rate in 1997

This calculation was also used to estimate the 1998 San Diego County child poverty rate (using the California child poverty rate in 1998) as is presented below.

**Data:**

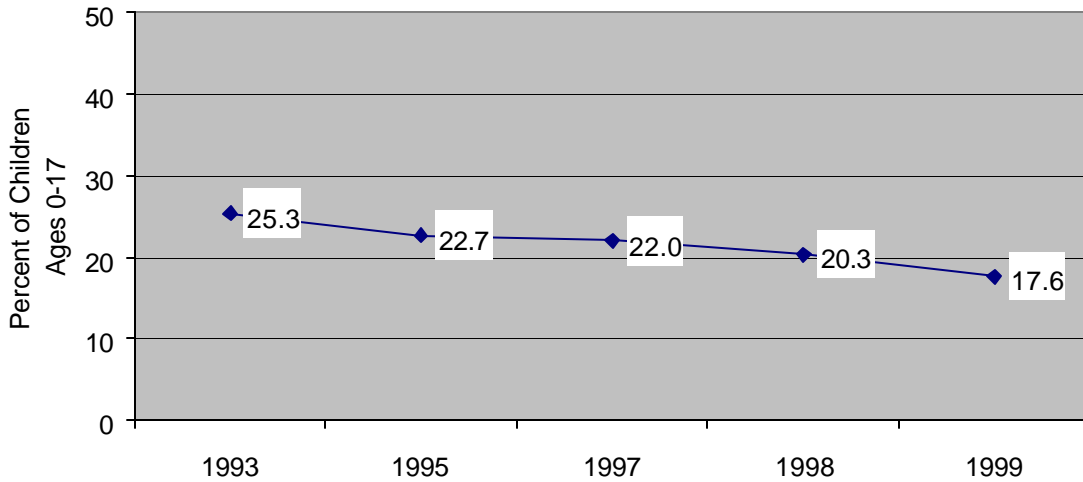
Percent of children living in poverty in San Diego County and California, 1989, 1993, 1995, 1997, 1998 and 1999

Year	Percent of Children Ages 0-17 Living in Poverty	
	San Diego County	California
1989	16.2	18.2
1993	25.3	28.3
1995	22.7	25.5
1997	22.0	26.4
1998	20.3	24.3
1999	17.6	21.1

Note: These data have been updated by SANDAG and may vary from those presented in previous Report Card publications.

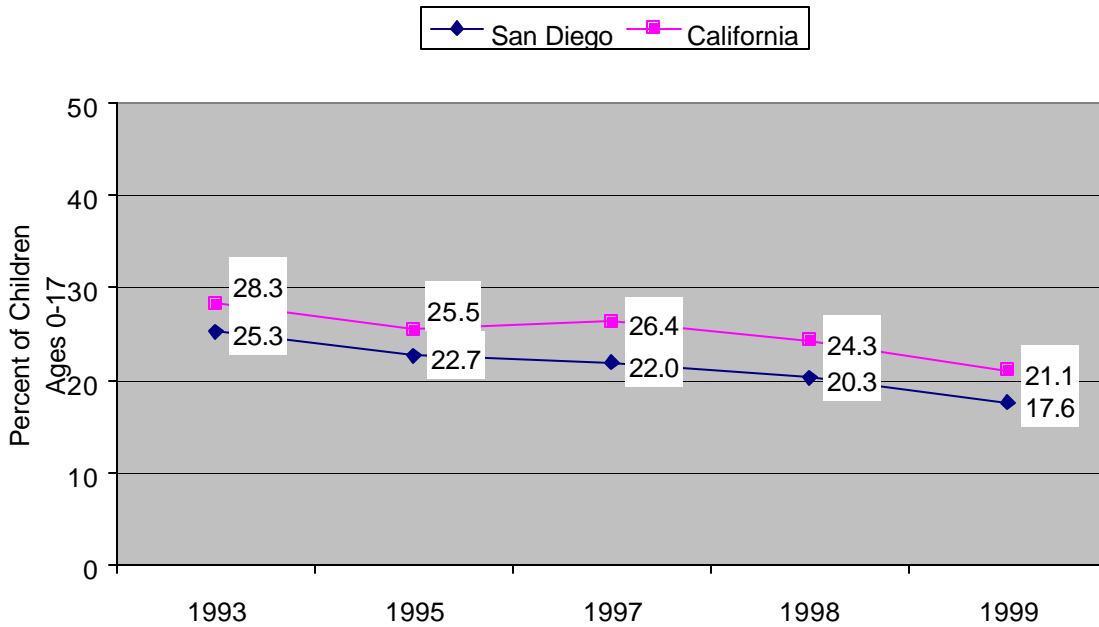
Sources: United States Census Bureau; SANDAG (1998 & 1999 San Diego County percentages)

**Percent of Children Living in Poverty in San Diego County:  
1993, 1995, 1997, 1998 & 1999**



Sources: United States Census Bureau; SANDAG (1998 & 1999 San Diego County percentages)

**Percent of Children Living in Poverty in San Diego County  
and California: 1993, 1995, 1997, 1998 & 1999**



Sources: United States Census Bureau; SANDAG (1998 & 1999 San Diego County percentages)

Note: Poverty data for San Diego County children by race/ethnicity could not be obtained within non-decennial census years. Data within the Health and Human Services Agency regional areas are also not available.

## Rate of Children and Youth Receiving CalWORKs Assistance

**Definition:** Average monthly number of children ages 0-17 that are receiving CalWORKs (public assistance) per 1,000 children ages 0-17 per state fiscal year (July 1 – June 30)

**Sources:** County of San Diego, Health and Human Services Agency, Policy and Program Support and State of California, Department of Social Services, Information Services Bureau accessed via the Internet at <http://www.dss.cahwnet.gov/research/calworkspecialrpts/calquarterly.htm>

**Calculation:** The rate of children receiving public assistance was derived by dividing the average monthly number of children receiving benefits each fiscal year by the population of children ages 0-17 living within the county during each respective year. State numbers were used to determine the rates within California. Rates were calculated per 1,000 children ages 0-17 within the county and state. Rates averaged over three years within each region of the county are presented. These rates are based upon the number of households within each region. Rates and confidence intervals (95% CI) were rounded up to the first decimal place. It must be noted that the number of children receiving benefits may include some youths that are 18 but have not yet graduated from high school. Furthermore, the number of child recipients may exclude some youths that are less than age 18 but are parents and/or head of a household. San Diego County rates have been calculated based on fiscal year data, which is a revision from the 1999 publication of this document in which calendar year data were used. Fiscal year rates allow a more accurate comparison with state data.

### Data:

Average monthly number and rate of children receiving CalWORKs in San Diego County, fiscal years 1993/94 – 1999/00

Fiscal Year	San Diego County Children Ages 0-17			
	Avg. Monthly No. Receiving CalWORKs	Population	Avg. Monthly Rate per 1,000	95% CI
1993/94	128,206	669,072	191.6	190.7 – 192.6
1994/95	131,449	680,066	193.3	192.4 – 194.2
1995/96	128,114	689,792	185.7	184.8 – 186.6
1996/97	119,008	705,317	168.7	167.9 – 169.6
1997/98	100,806	723,889	139.3	138.5 – 140.1
1998/99	83,039	739,944	112.2	111.5 – 112.9
1999/00	67,329	755,963	89.1	88.4 – 89.7

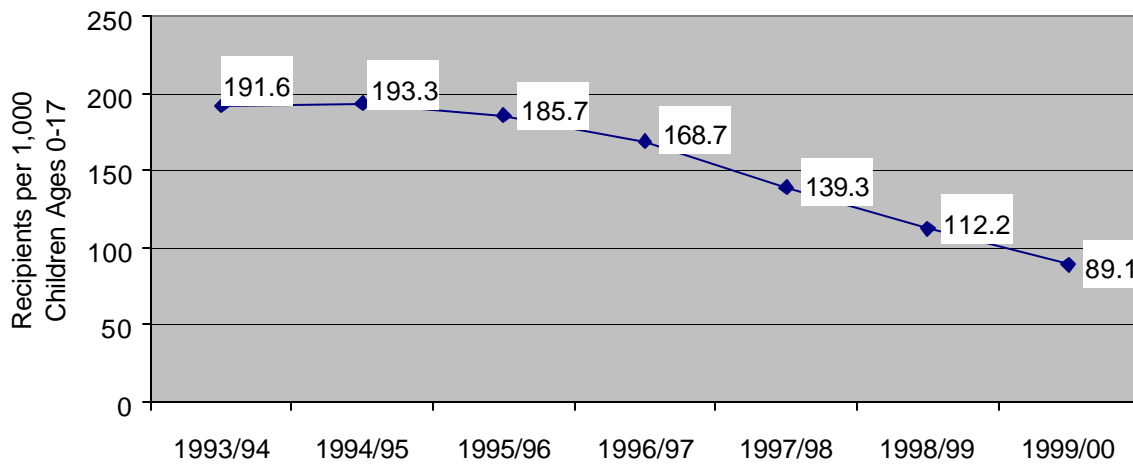
Sources: County of San Diego, Health and Human Services Agency, Policy and Program Support; San Diego County population estimates were obtained from SANDAG

Average monthly number and rate of children receiving CalWORKs in California, fiscal years 1993/94 –1999/00

Fiscal Year	California Children, Ages 0-17			
	Avg. Monthly No. Receiving CalWORKs	Population	Avg. Monthly Rate Per 1,000	95% CI
1993/94	1,781,873	8,762,921	203.3	203.1 – 203.6
1994/95	1,832,105	8,904,439	205.8	205.5 – 206.0
1995/96	1,815,896	9,043,402	200.8	200.5 – 201.1
1996/97	1,716,787	9,251,040	185.6	185.3 – 185.8
1997/98	1,512,806	9,426,168	160.5	160.3 – 160.7
1998/99	1,333,685	9,587,332	139.1	138.9 – 139.3
1999/00	1,193,481	9,770,687	122.1	121.9 – 122.4

Sources: State of California, Department of Social Services, Information Services Bureau; California population estimates were obtained from the State of California, Department of Finance

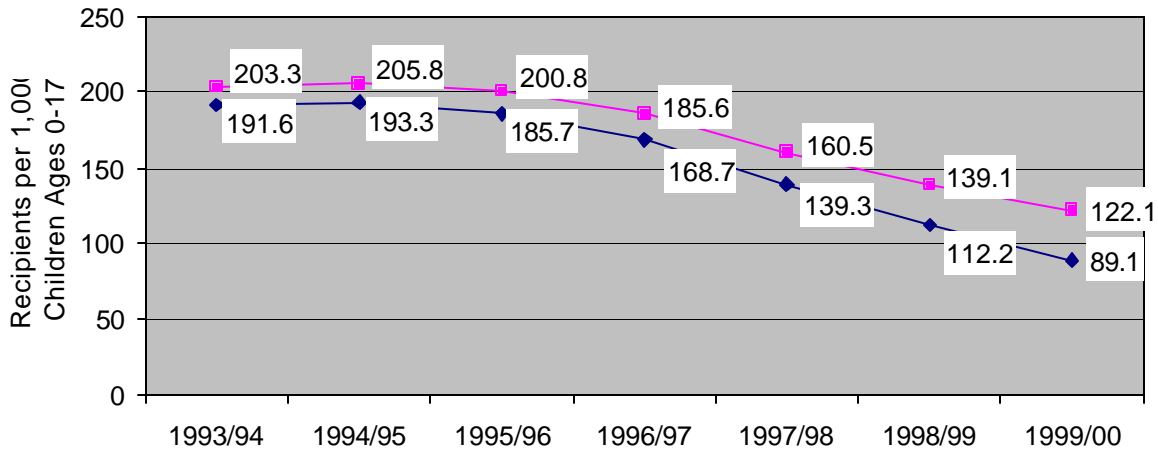
**Average Monthly Rate of Children Receiving CalWORKS Assistance in San Diego County: Fiscal Years 1993/94 - 1999/00**



Note: Rates have been rounded.

Sources: County of San Diego, Health and Human Services Agency, Policy and Program Support; San Diego County population estimates used in rate calculations were obtained from SANDAG

**Average Monthly Rate of Children Receiving CalWORKS Assistance  
in San Diego County and California: Fiscal Years 1993/94 - 1999/00**



Note: Rates have been rounded.

Sources: County of San Diego, Health and Human Services Agency, Policy and Program Support; State of California, Department of Social Services, Information Services Bureau; San Diego County population estimates used in rate calculations were obtained from SANDAG; California population estimates were obtained from the State of California, Department of Finance

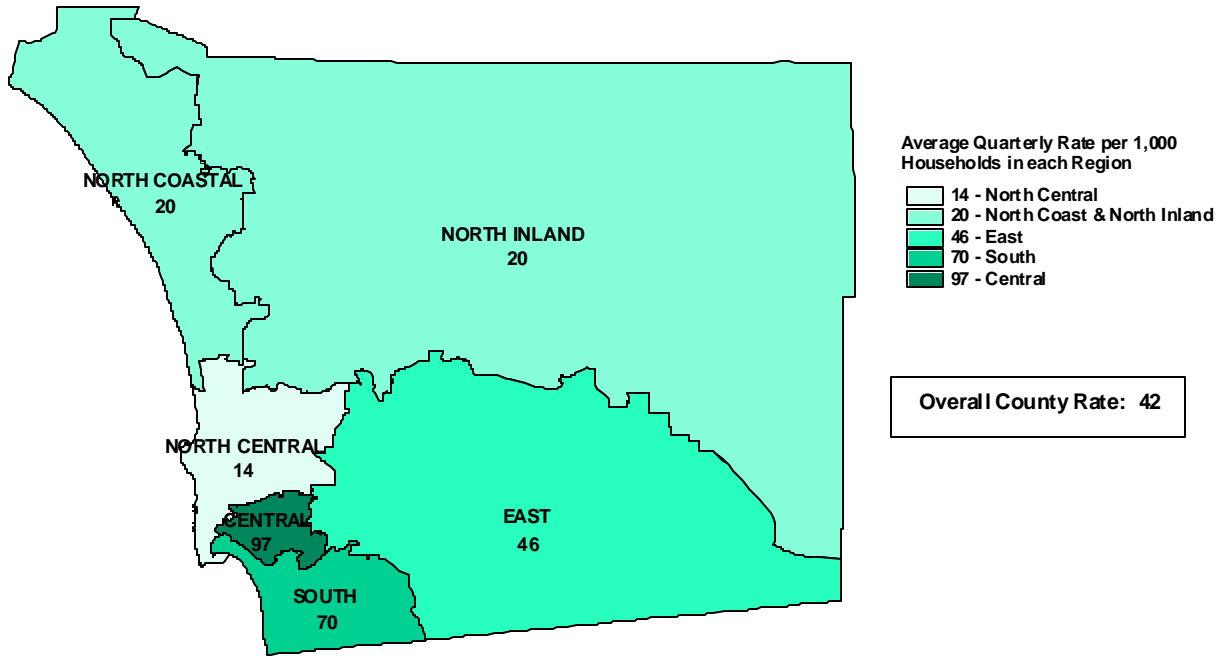
Average quarterly number of households receiving CalWORKs in San Diego County by Health and Human Services Agency regional areas, fiscal years 1997/98 through 1999/00

Average Quarterly Rate of Households Receiving CalWORKs in San Diego County by Health and Human Services Agency Regional Areas FY 1997/98 to 1999/00		
Region	3-yr. Avg. Quarterly Rate	95% CI
County Overall	41.7	41.3 – 42.1
North Coastal	19.6	18.9 – 20.2
North Inland	20.3	19.6 – 21.0
North Central	13.8	13.3 – 14.3
Central	97.0	95.6 – 98.5
East	45.8	44.8 – 46.8
South	70.2	68.7 – 71.7

Note: Regional data were available by quarterly rather than monthly counts and by households rather than number of children. Rates are per 1,000 households in each region.

Sources: County of San Diego, Health and Human Services Agency, Policy and Program Support; San Diego County population estimates used in rate calculations were obtained from SANDAG

**Rate of CalWORKs Households in San Diego County  
by Health and Human Services Agency Regional Areas  
1997/98 - 1999/00**



Note: Rates have been rounded and do not include households with invalid zip codes (less than 1% of households).  
Sources: County of San Diego, Health and Human Services Agency, Policy and Program Support;  
San Diego County population estimates used in rate calculations were obtained from SANDAG

Note: Racial/ethnic data are not available for children receiving CalWORKs in San Diego County.

## GOOD HEALTH

### Percent of Babies with Low Birthweight

**Definition:** Annual percent of live born infants weighing less than 2,500 grams (5 ½ lbs.) at birth

**Sources:** County of San Diego, Health and Human Services Agency, Child, Youth and Family Health Assessment and Planning; State of California, Department of Health Services, Center for Health Statistics, Vital Statistics Section, Birth Statistical Master Files

**Calculation:** The percentage of babies with low birthweight was derived by dividing the number of babies born weighing less than 2,500 grams (5 ½ lbs.) within a year in San Diego County by the total number of live births registered to residents of San Diego County within that year. Each number was then multiplied by 100 for the percent. The percentages for several races and ethnicities were also calculated based on the registered race or ethnicity of the mothers of babies born alive within the county each year. California percentages were also calculated. Race/ethnicity and regional rates were averaged over the years 1997-1999. All percentages and confidence intervals (95% CI) have been rounded up to the first decimal place.

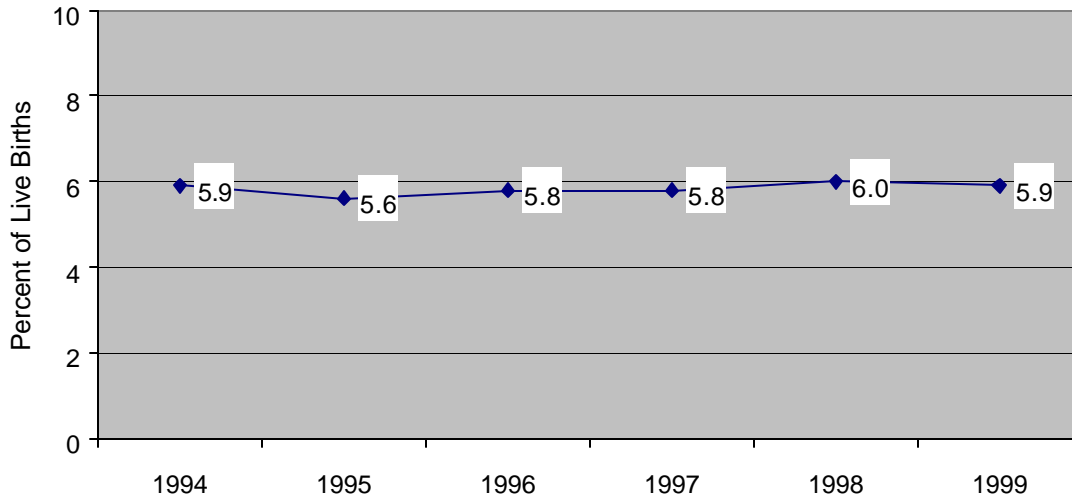
**Data:**

Percent of babies born with low birthweight in San Diego County and California, 1994-1999

Year	San Diego County				California			
	No. of Live Births	Low Birthweight Babies			No. of Live Births	Low Birthweight Babies		
		Number	Percent of Live Births	95% CI		Number	Percent of Live Births	95% CI
1994	47,607	2,821	5.9	5.7 – 6.1	567,034	34,876	6.2	6.1 – 6.2
1995	45,902	2,553	5.6	5.4 – 5.8	551,226	33,588	6.1	6.0 – 6.2
1996	44,886	2,614	5.8	5.6 – 6.0	538,628	32,649	6.1	6.0 – 6.1
1997	43,255	2,518	5.8	5.6 – 6.0	524,174	32,232	6.2	6.1 – 6.2
1998	43,422	2,603	6.0	5.8 – 6.2	521,265	32,438	6.2	6.2 – 6.3
1999	43,261	2,563	5.9	5.7 – 6.1	518,073	31,686	6.1	6.1 – 6.2

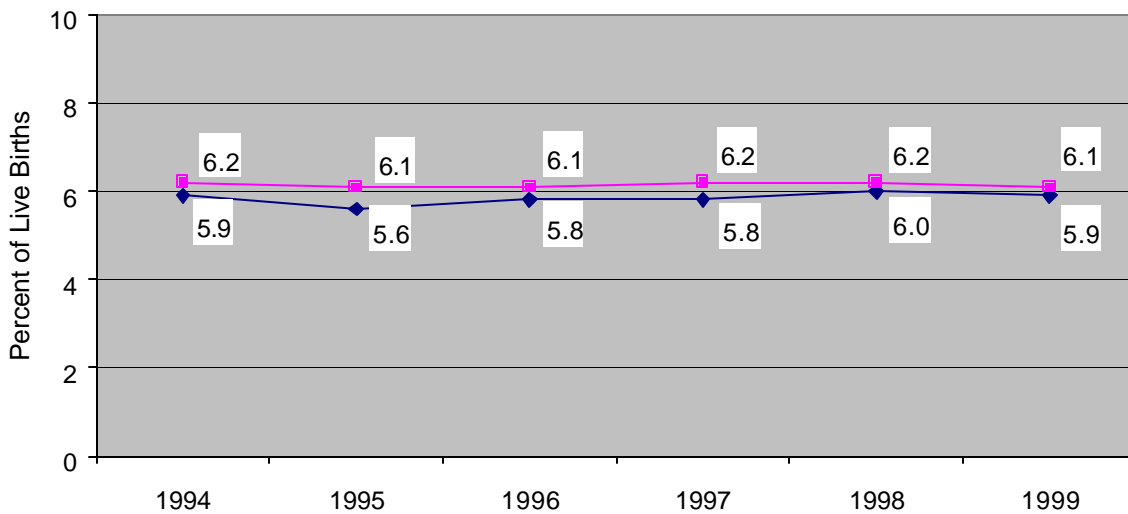
Sources: County of San Diego, Health and Human Services Agency, Child, Youth and Family Health Assessment and Planning; State of California, Department of Health Services, Center for Health Statistics, Vital Statistics Section, Birth Statistical Master Files

**Percent of Babies Born with Low Birthweight  
in San Diego County: 1994-1999**



Sources: County of San Diego, Health and Human Services Agency, Child, Youth and Family Health Assessment and Planning; State of California, Department of Health Services, Center for Health Statistics, Vital Statistics Section, Birth Statistical Master Files

**Percent of Babies Born with Low Birthweight  
in San Diego County and California: 1994-1999**



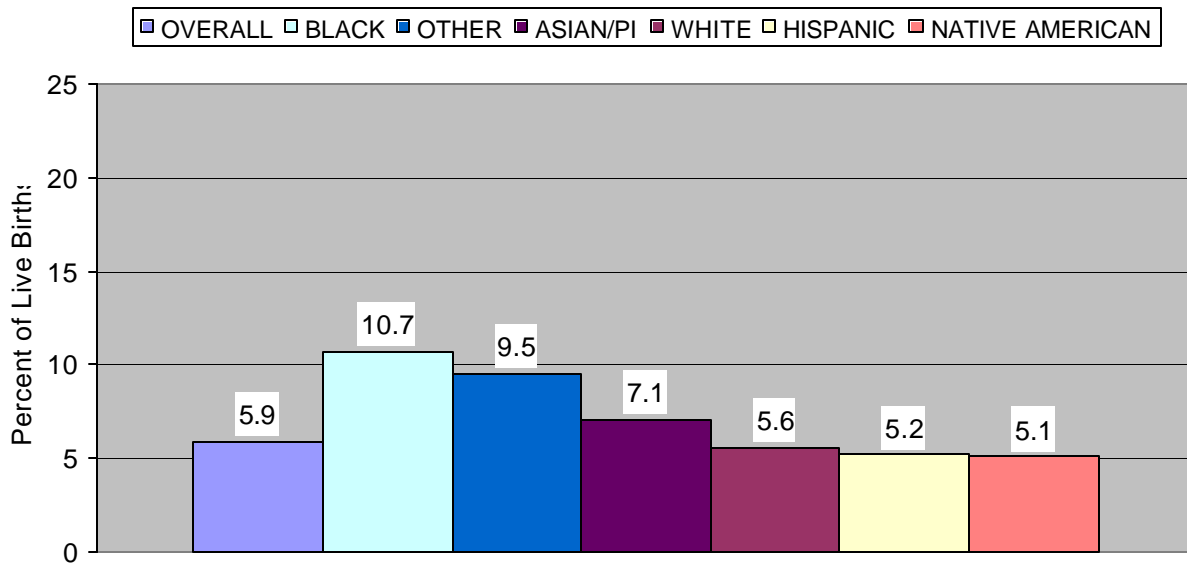
Sources: County of San Diego, Health and Human Services Agency, Child, Youth and Family Health Assessment and Planning; State of California, Department of Health Services, Center for Health Statistics, Vital Statistics Section, Birth Statistical Master Files

Percent of babies born with low birthweight by race/ethnicity in San Diego County and California, 3-year averages, 1997-1999

Race/ Ethnicity	Percent of Babies Born with Low Birthweight by Race/Ethnicity 1997-1999			
	San Diego County		California	
	3-yr. Avg. Percentage	95% CI	3-yr. Avg. Percentage	95% CI
Overall	5.9	5.7 – 6.1	6.2	6.1 – 6.2
White	5.6	5.2 – 5.9	5.6	5.5 – 5.7
Hispanic	5.2	4.9 – 5.5	5.6	5.5 – 5.7
Black	10.7	9.5 – 11.8	11.9	11.6 – 12.2
Asian/Pac. Is.	7.1	6.4 – 7.9	6.9	6.7 – 7.1
Nat. Amer.	5.1	2.3 – 8.0	5.8	4.9 – 6.7
Other	9.5	4.6 – 14.4	8.0	7.1 – 9.0

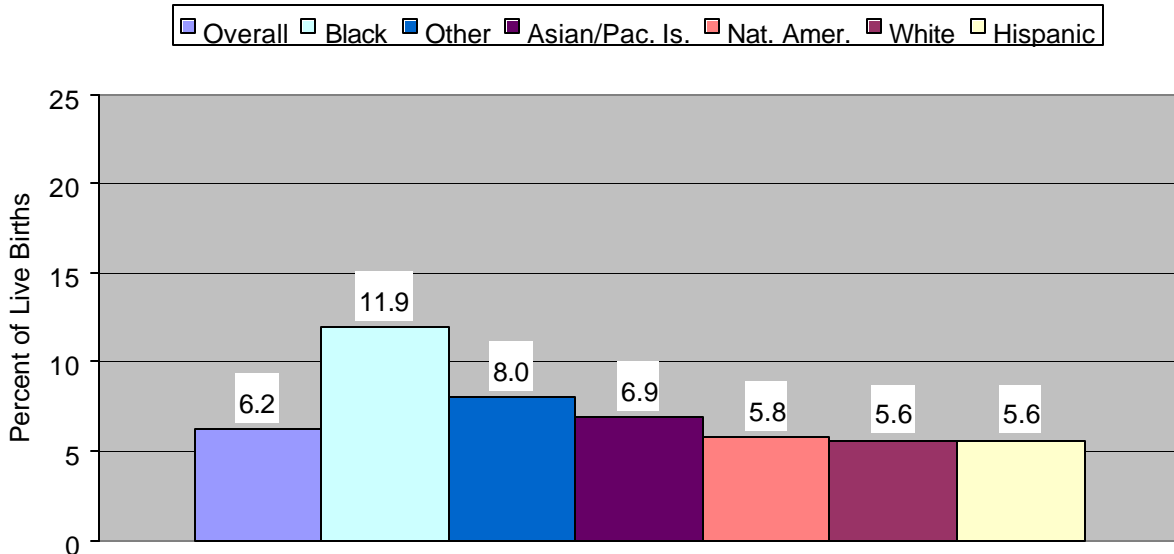
Sources: County of San Diego, Health and Human Services Agency, Child, Youth and Family Health Assessment and Planning; State of California, Department of Health Services, Center for Health Statistics, Vital Statistics Section, Birth Statistical Master Files

**Percent of Babies Born with Low Birthweight in San Diego County by Race/Ethnicity: 1997-1999 Average**



Sources: County of San Diego, Health and Human Services Agency, Child, Youth and Family Health Assessment and Planning; State of California, Department of Health Services, Center for Health Statistics, Vital Statistics Section, Birth Statistical Master Files

**Percent of Babies Born with Low Birthweight  
in California by Race/Ethnicity: 1997-1999 Average**



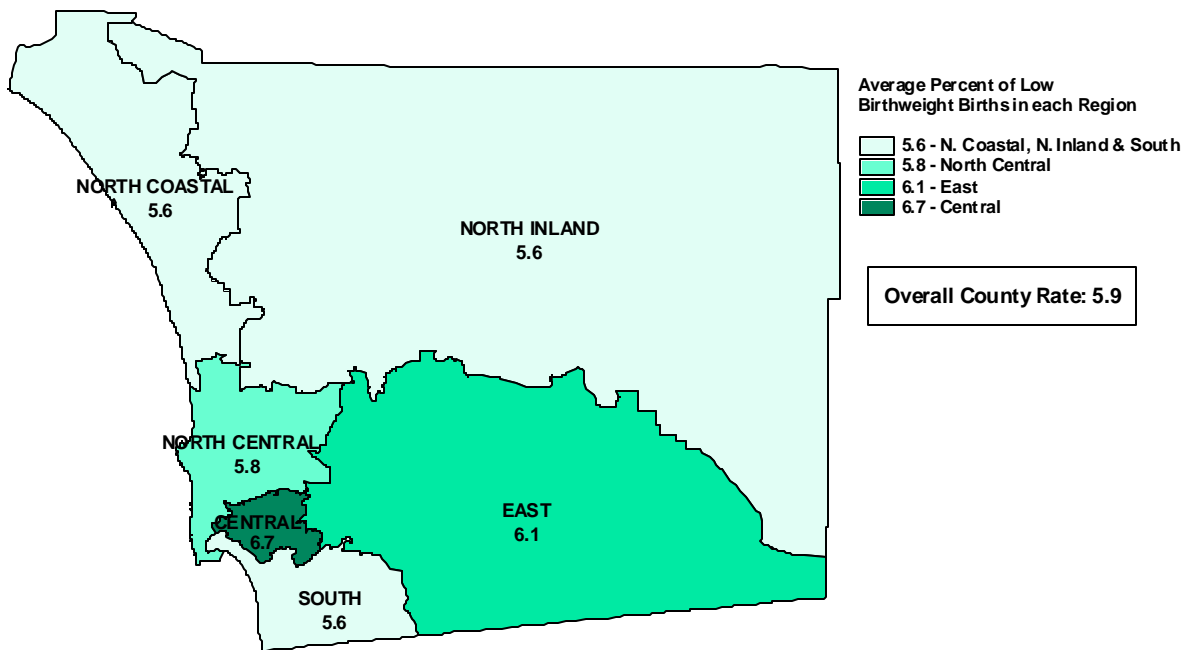
Sources: County of San Diego, Health and Human Services Agency, Child, Youth and Family Health Assessment and Planning; State of California, Department of Health Services, Center for Health Statistics, Vital Statistics Section, Birth Statistical Master Files

Percent of babies born with low birthweight in San Diego County by Health and Human Services Agency regional areas, 3-year averages, 1997-1999

Percent of Babies Born with Low Birthweight in San Diego County by Health and Human Services Agency Regional Areas 1997-1999		
Region	3-yr. Avg. Percentage	95% CI
County Overall	5.9	5.7 – 6.1
North Coastal	5.6	5.1 – 6.2
North Inland	5.6	5.1 – 6.2
North Central	5.8	5.2 – 6.3
Central	6.7	6.2 – 7.2
East	6.1	5.4 – 6.7
South	5.6	5.1 – 6.1

Sources: County of San Diego, Health and Human Services Agency, Child, Youth and Family Health Assessment and Planning; State of California, Department of Health Services, Center for Health Statistics, Vital Statistics Section, Birth Statistical Master Files

**Percent of Babies Born with Low Birthweight in San Diego County  
by Health and Human Services Agency Regional Areas  
1997- 1999**



Note: Low Birthweight is less than 2,500 grams (5 1/2 lbs.)  
 Sources: County of San Diego, Health and Human Services Agency, Child, Youth and Family Health Assessment and Planning;  
 State of California, Department of Health Services, Center for Health Statistics, Vital Statistics Section, Birth Statistical Master Files

## Rate of Teen Births

**Definition:** Number of births to teens 15-17 years old per 1,000 females ages 15-17 per year

**Sources:** County of San Diego, Health and Human Services Agency, Child Youth and Family Health Assessment and Planning; State of California, Department of Health Services, Center for Health Statistics, Vital Statistics Section, Birth Statistical Master Files

**Calculation:** The number of live births to 15-17 year old residents of San Diego County during a single year was divided by the number of females aged 15-17 residing in this county during that year. This number was then multiplied by 1,000 for the rate. Birth rates among several races/ethnicities among San Diego County residents were also derived using the number of live births to 15-17 year old females of each race/ethnicity and dividing by the number of females ages 15-17 of the corresponding race/ethnicity who were residing in San Diego County each respective year. State numbers were used to derive the rates within California. Rates have been averaged over the years 1997-1999 for race/ethnicity and regional statistics. Rates and confidence intervals (95% CI) have been rounded up to the first decimal place.

San Diego County rates are compared to those of California. It must be noted that state and national teen birth rates are often reported within varied age ranges, for example, ages under 15 and 15-19. Comparison of the San Diego County birth rate among 15-17 year old girls must be made only to rates within this specific age range. Widening of the age range in either direction influences the rate obtained, that is, inclusion of girls less than 15 years old would decrease the rate while the inclusion of girls older than 17 would increase the rate.

### Data:

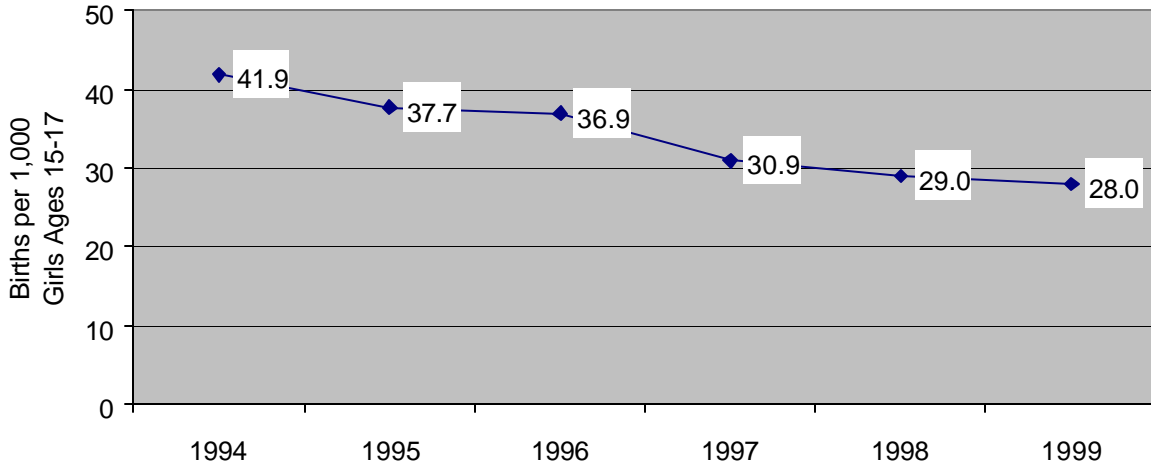
Number and rate of births to teenagers in San Diego County and California, 1994-1999

Year	Females, Ages 15-17							
	San Diego County				California			
	No. of Births	Population	Birth Rate	95% CI	No. of Births	Population	Birth Rate	95% CI
1994	1,846	44,017	41.9	40.1 – 43.8	26,378	583,290	45.2	44.7 – 45.8
1995	1,716	45,559	37.7	35.9 – 39.4	25,821	602,236	42.9	42.4 – 43.4
1996	1,752	47,535	36.9	35.2 – 38.6	24,047	627,740	38.3	37.8 – 38.8
1997	1,533	49,641	30.9	29.4 – 32.4	23,064	646,663	35.7	35.2 – 36.1
1998	1,490	51,334	29.0	27.6 – 30.5	21,630	663,642	32.6	32.2 – 33.0
1999	1,461	52,174	28.0	26.6 – 29.4	20,209	671,509	30.1	29.7 – 30.5

Rates are per 1,000 female population ages 15-17.

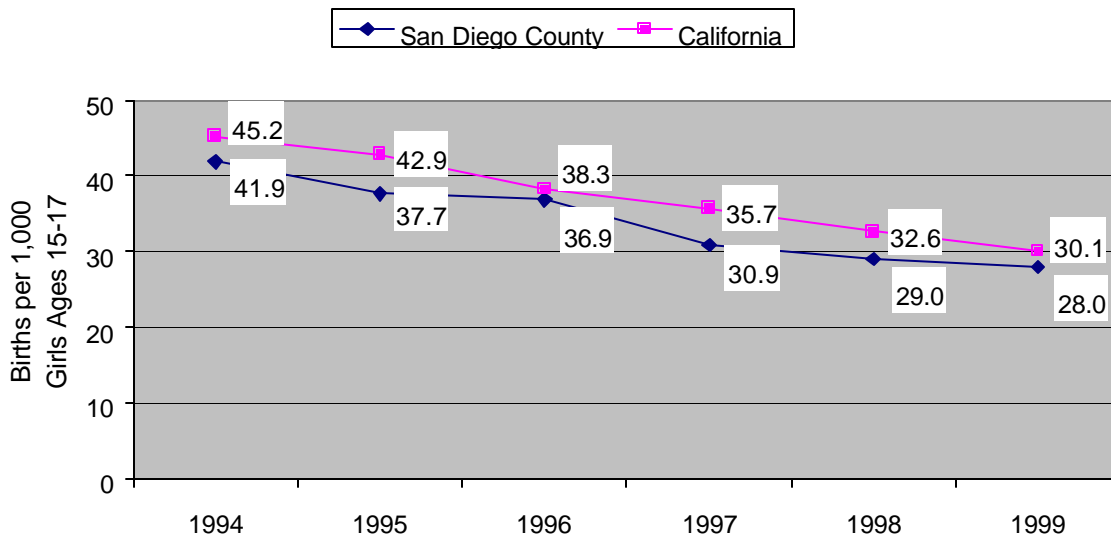
Source: County of San Diego, Health and Human Services Agency, Child Youth and Family Health Assessment and Planning; State of California, Department of Health Services, Center for Health Statistics, Vital Statistics Section, Birth Statistical Master Files; San Diego County population estimates used in rate calculations were obtained from SANDAG; California population estimates were obtained from the State of California, Department of Finance

**Rate of Births to Teens Ages 15-17  
in San Diego County: 1994-1999**



Sources: County of San Diego, Health and Human Services Agency, Child Youth and Family Health Assessment and Planning; State of California, Department of Health Services, Center for Health Statistics, Vital Statistics Section, Birth Statistical Master; San Diego County population estimates used in rate calculations were obtained from SANDAG

**Rate of Births to Teens Ages 15-17  
in San Diego County and California: 1994-1999**



Sources: County of San Diego, Health and Human Services Agency, Child Youth and Family Health Assessment and Planning; State of California, Department of Health Services, Center for Health Statistics, Vital Statistics Section, Birth Statistical Master Files; San Diego County population estimates used in rate calculations were obtained from SANDAG; California population estimates were obtained from the State of California, Department of Finance

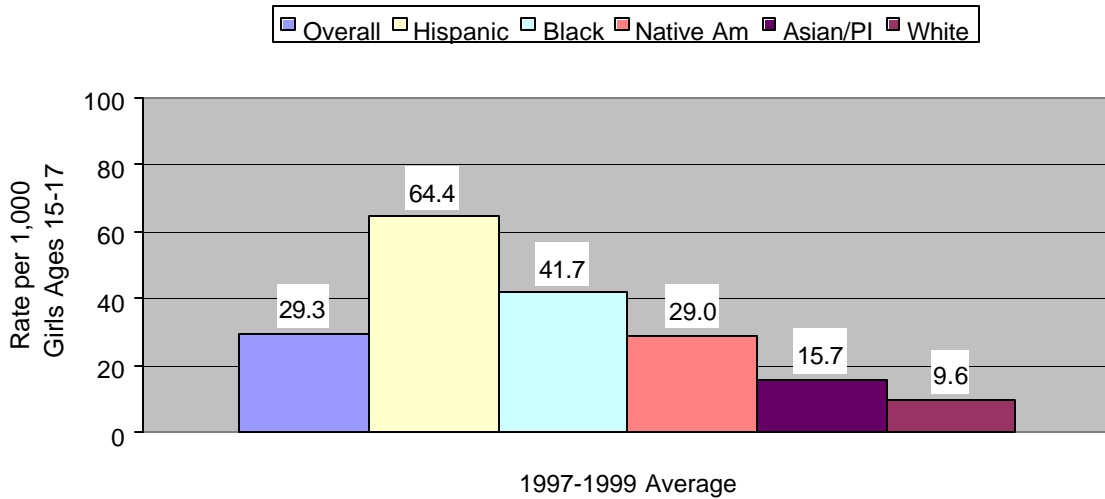
Rate of births to teenagers by race/ethnicity in San Diego County and California, 3-year averages, 1997-1999

Race/ Ethnicity	Rate of Teen Births (Ages 15-17), 1997-1999			
	San Diego County		California	
	3-yr. Avg. Rate	95% CI	3-yr. Avg. Rate	95% CI
Overall	29.3	27.8 – 30.7	32.7	32.3 – 33.2
White	9.6	8.4 – 10.8	12.3	11.9 – 12.7
Hispanic	64.4	60.5 – 68.3	62.8	61.8 – 63.8
Black	41.7	35.3 – 48.1	35.7	34.2 – 37.2
Asian/Pac. Is.	15.7	12.3 – 19.2	13.7	12.8 – 14.5
Nat. Amer.	29.0	13.5 – 44.6	41.7	35.8 – 47.6

Rates are per 1,000 female population ages 15-17 in each race/ethnicity.

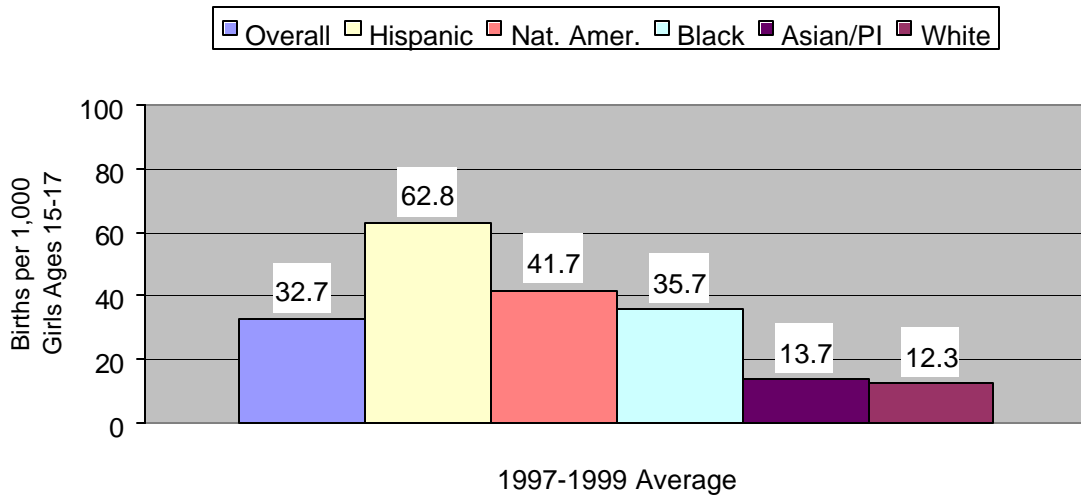
Sources: County of San Diego, Health and Human Services Agency, Child Youth and Family Health Assessment and Planning; State of California, Department of Health Services, Center for Health Statistics, Vital Statistics Section, Birth Statistical Master Files; San Diego County population estimates used in rate calculations were obtained from SANDAG; California population estimates were obtained from the State of California, Department of Finance

**Rate of Births to Teens 15-17 by Race/Ethnicity  
San Diego County, 1997-1999 Average**



Sources: County of San Diego, Health and Human Services Agency, Child Youth and Family Health Assessment and Planning; State of California, Department of Health Services, Center for Health Statistics, Vital Statistics Section, Birth Statistical Master Files; San Diego County population estimates used in rate calculations were obtained from SANDAG

**Rate of Births to Teens Ages 15-17 by Race/Ethnicity  
California, 1997-1999 Average**



Sources: County of San Diego, Health and Human Services Agency, Child Youth and Family Health Assessment and Planning; State of California, Department of Health Services, Center for Health Statistics, Vital Statistics Section, Birth Statistical Master Files; California population estimates used in rate calculations were obtained from the State of California, Department of Finance

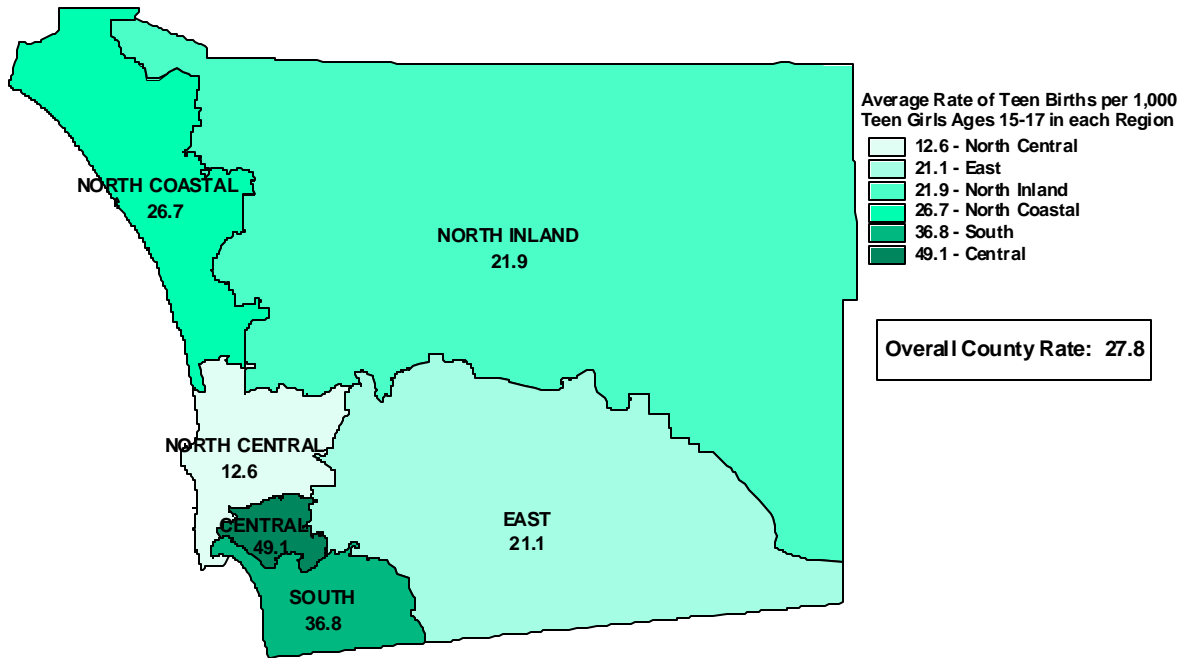
Rate of births to teenagers in San Diego County by Health and Human Services Agency, regional areas, 3-year averages, 1997-1999

Rate of Births to Teens (Ages 15-17) in San Diego County by Health and Human Services Agency Regional Areas 1997-1999		
Region	3-yr. Avg. Rate	95% CI
County Overall	27.8	26.4 – 29.2
North Coastal	26.7	23.2 – 30.2
North Inland	21.9	19.1 – 24.7
North Central	12.6	10.2 – 15.0
Central	49.1	44.6 – 53.7
East	21.1	18.3 – 24.0
South	36.8	32.7 – 40.9

Rates are per 1,000 female population ages 15-17 in each region.

Sources: County of San Diego, Health and Human Services Agency, Child Youth and Family Health Assessment and Planning; State of California, Department of Health Services, Center for Health Statistics, Vital Statistics Section, Birth Statistical Master Files; San Diego County population estimates used in rate calculations were obtained from SANDAG

**Rate of Births to Teens Ages 15-17 in San Diego County  
by Health and Human Services Agency Regional Areas  
1997-1999**



Source: County of San Diego, Health and Human Services Agency, Child, Youth and Family Health Assessment and Planning; State of California, Department of Health Services, Center for Health Statistics, Vital Statistics Section, Birth Statistical Master Files; San Diego County population estimates used in rate calculations were obtained from SANDAG

## **Percent of Youth that Attempted Suicide and Number of Youth Suicides**

**Definitions:** Percent of high school students surveyed that reported an attempted suicide one or more times during the past 12 months; the number of self-inflicted intentional deaths among youth ages 15-19

### **Sources:**

San Diego City Schools, Educational Services Division, Comprehensive Health, Physical Education and Wellness.

Centers for Disease Control and Prevention. *CDC Surveillance Summaries*, June 9, 2000. MMWR 2000;49 (No. SS-5).

State of California, Department of Health Services, Center for Health Statistics, Vital Statistics Section, Death Statistical Master Files

**Methodology:** The Youth Risk Behavior Surveillance System, developed by the Centers for Disease Control and Prevention, monitors many health-risk behaviors through the use of school-based surveys of high school students. In San Diego City Schools, the Youth Risk Behavior Survey (YRBS) has been conducted every other year since 1991 and was most recently administered during the spring of 1999. This survey is voluntary and anonymously self-administered by the student during class time unless parental permission to participate is denied. Further discussion of the methodology of this surveillance system can be obtained from the Centers for Disease Control as cited above. It must be noted that, within San Diego County, this survey was administered in only San Diego City schools. The results from San Diego are compared to those of the nation. Results are no longer reported for the state of California. The percentages of San Diego City high school students within several race/ethnic categories who reported a suicide attempt within the survey are presented. The confidence intervals (95% CI) for overall percentages are included. The numbers of suicide deaths during the years 1994-1999 among youth ages 15-19 in San Diego County and California are provided as supplemental information. Suicide numbers were obtained from death records.

**Note:** Data for attempted suicide have not been updated from the 2000 Report Card as the most current data available are from the 1999 survey.

**Data:**

Percent of students that reported a suicide attempt among surveyed San Diego City high school students and high school students throughout the nation in 1999

Percent of Surveyed High School Students that Reported a Suicide Attempt, 1999			
San Diego City Data		National Data	
Percentage	95% CI	Percentage	95% CI
9.2	7.5 – 10.9	8.3	7.4 – 9.2

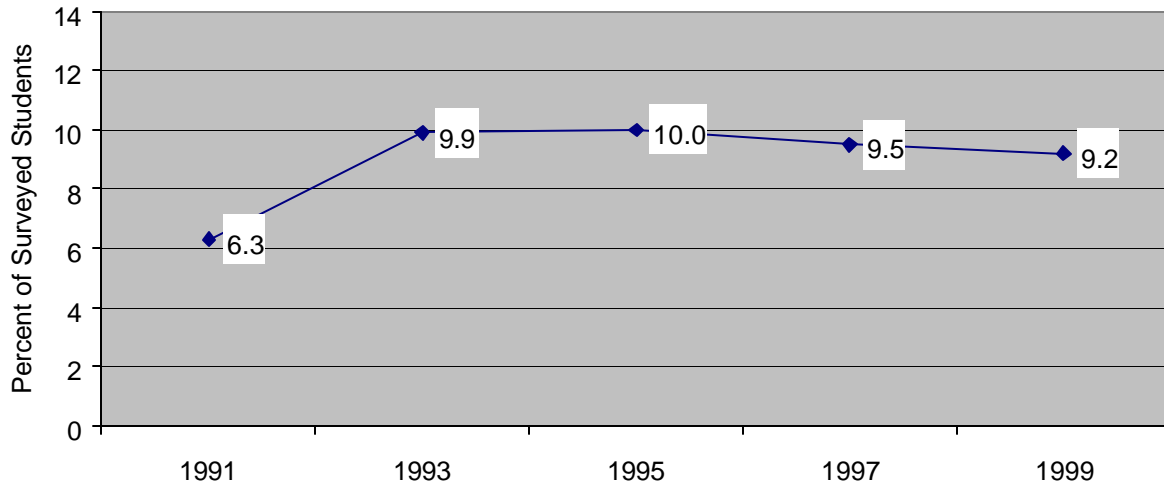
Note: Attempted suicide is having attempted suicide one or more times during the past 12 months.

Source: Centers for Disease Control and Prevention. *CDC Surveillance Summaries*, June 9, 2000. MMWR 2000;49 (No. SS-5).

Percent of students that reported a suicide attempt among surveyed San Diego City high school students, 1991, 1993, 1995, 1997 and 1999

Year	Percent of Surveyed Students that Reported a Suicide Attempt San Diego City High Schools	
	Percentage	95% CI
1991	6.3	3.4 – 9.1
1993	9.9	8.0 – 11.8
1995	10.0	8.2 – 11.9
1997	9.5	8.1 – 10.8
1999	9.2	7.5 – 10.9

**Percent of Students that Reported a Suicide Attempt  
Among Surveyed San Diego City High School Students:  
1991, 1993, 1995, 1997, 1999**



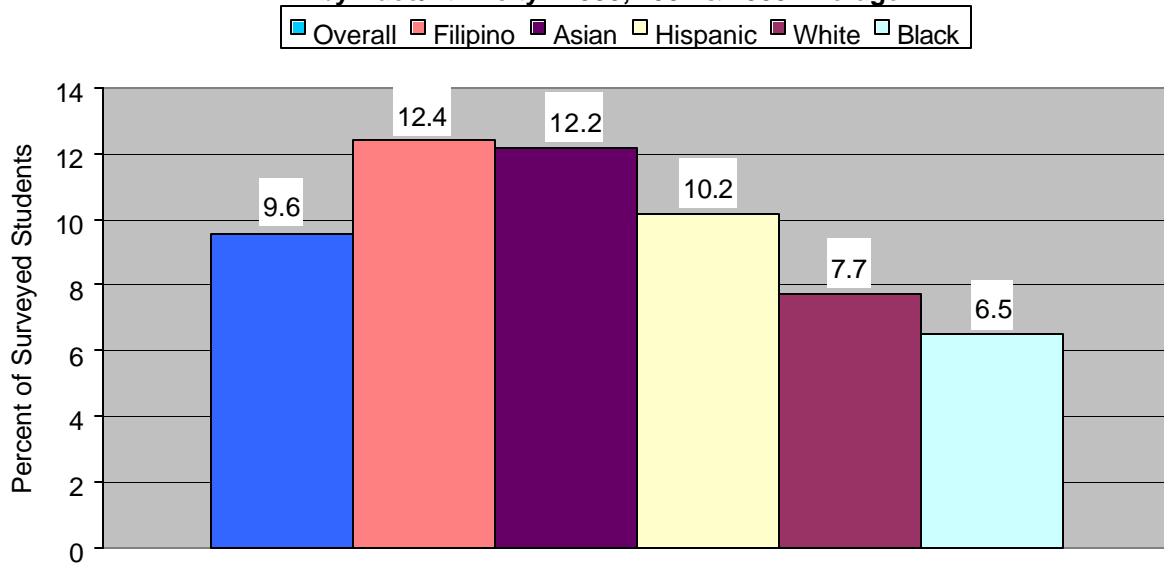
Note: Attempted suicide is having attempted suicide one or more times during the past 12 months.  
Source: San Diego City Schools, Educational Services Division, Comprehensive Health, Physical Education and Wellness

Percent of students that reported a suicide attempt among surveyed San Diego City high school students by race/ethnicity, 3-year average percentages, 1995, 1997 and 1999

Percent of Students that Reported a Suicide Attempt by Race/Ethnicity Among Surveyed San Diego City High School Students 3-Year Averages, 1995, 1997 & 1999					
Overall	White	Hispanic	Black	Asian	Filipino
9.6	7.7	10.2	6.5	12.2	12.4

Note: Percentages are among surveyed students within each race/ethnicity. Native American students were too few in number for representative results. Attempted suicide is having attempted suicide one or more times during the past 12 months.  
Source: San Diego City Schools, Educational Services Division, Comprehensive Health, Physical Education and Wellness

**Percent of Students that Reported a Suicide Attempt  
Among Surveyed San Diego City High School Students  
by Race/Ethnicity: 1995, 1997 & 1999 Average**



Note: Percentages are among surveyed students within each race/ethnicity. Native American students were too few in number for representative results. Attempted suicide is having attempted suicide one or more times during the past 12 months.

Source: San Diego City Schools, Educational Services Division, Comprehensive Health, Physical Education and Wellness

Number of suicide deaths among youth (ages 15-19) in San Diego County and California, 1994-1999

Year	Number of Suicide Deaths Among Youth Ages 15-19	
	San Diego County	California
1994	13	161
1995	26	180
1996	20	179
1997	11	155
1998	16	142
1999	10	110

Note: Rates were not calculated due to small numbers.

Source: State of California, Department of Health Services, Center for Health Statistics, Vital Statistics Section, Death Statistical Master Files

## **Percent of Youth that Use Substances: Cigarette Use, Alcohol Use, Marijuana Use**

**Definitions:** Percent of high school students surveyed that reported substance use. Substance use is defined as the following types: 1) Cigarette Use: having smoked cigarettes on one or more of the past 30 days; 2) Alcohol Use: having had at least one drink of alcohol on one or more of the past 30 days; 3) Marijuana Use: having used marijuana one or more times during the past 30 days.

### **Sources:**

San Diego City Schools, Educational Services Division, Comprehensive Health, Physical Education and Wellness.

Centers for Disease Control and Prevention. *CDC Surveillance Summaries*, June 9, 2000. MMWR 2000;49 (No. SS-5).

**Methodology:** The Youth Risk Behavior Surveillance System, developed by the Centers for Disease Control and Prevention, monitors many health-risk behaviors through the use of school-based surveys of high school students. In San Diego City Schools, the Youth Risk Behavior Survey (YRBS) has been conducted every other year since 1991 and was most recently administered during the spring of 1999. This survey is voluntary and anonymously self-administered by the student during class time unless parental permission to participate is denied. Further discussion of the methodology of this surveillance system can be obtained from the Centers for Disease Control as cited above. It must be noted that, within San Diego County, this survey was administered in only San Diego City Schools. The results from San Diego are compared to those of the nation. Results are no longer reported for the state of California. The percentages of San Diego City high school students within several race/ethnic categories who reported substance use in the survey are presented as averages of the three most recent years' surveys. The confidence intervals (95% CI) for overall percentages are provided.

**Note:** The Binge Drinking measure used in the 2000 Report Card was changed to Alcohol Use for the 2001 Report Card. The percent of students who reported binge drinking in the past 30 days in the 1999 administration of the survey was 22.3%. Data for cigarette smoking and marijuana use have not been updated from the 2000 Report Card as the most current data available are from the 1999 survey.

**Data:**

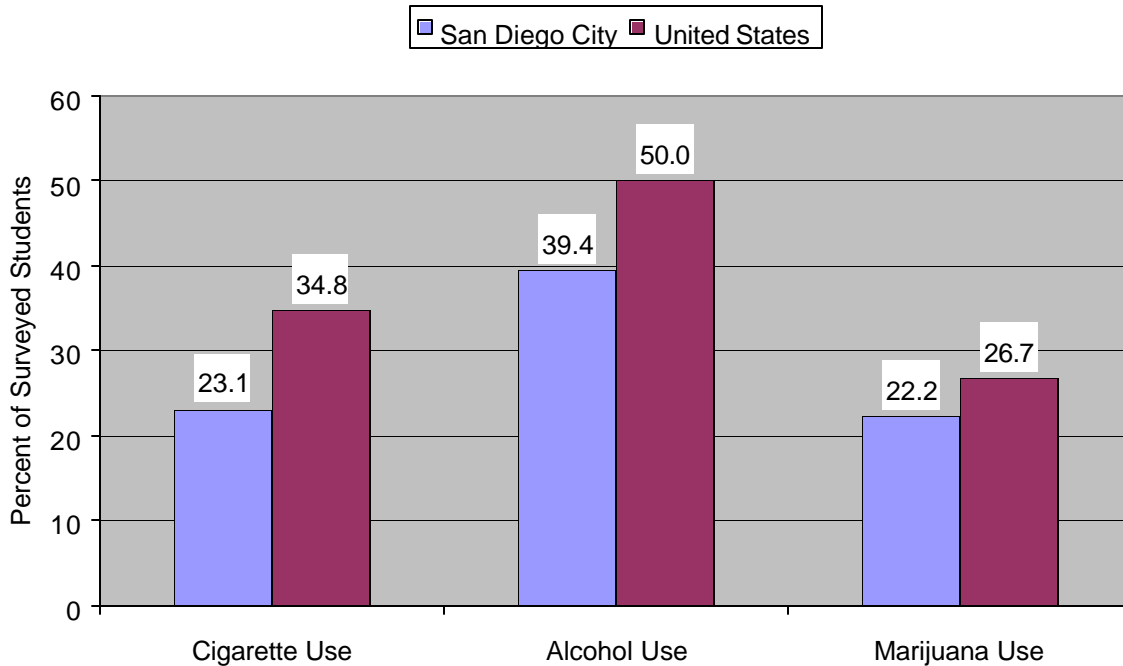
Percent of students that reported substance use among surveyed San Diego City high school students and high school students throughout the nation in 1999

Surveyed High School Students	Percent of Students Reporting Each Use in 1999		
	Cigarette Use (95% CI)	Alcohol Use (95% CI)	Marijuana Use (95% CI)
San Diego City Data	23.1 (20.5 – 25.7)	39.4 (35.5 – 43.3)	22.2 (19.4 – 25.1)
National Data	34.8 (32.3 – 37.3)	50.0 (47.5 – 52.5)	26.7 (24.2 – 29.2)

Note: Cigarette use is having smoked cigarettes on one or more of the past 30 days. Alcohol use is having had at least one drink of alcohol on one or more of the past 30 days. Marijuana use is having used marijuana one or more times in the past 30 days.

Source: Centers for Disease Control and Prevention. CDC Surveillance Summaries, June 9, 2000. MMWR 2000;49 (No. SS-5).

**Percent of Students that Reported Substance Use Among Surveyed San Diego City and U.S. High School Students 1999**



Note: Cigarette use is having smoked cigarettes on one or more of the past 30 days. Alcohol use is having had at least one drink of alcohol on one or more of the past 30 days. Marijuana use is having used marijuana one or more times in the past 30 days.

Source: Centers for Disease Control and Prevention. CDC Surveillance Summaries, June 9, 2000. MMWR 2000;49 (No. SS-5).

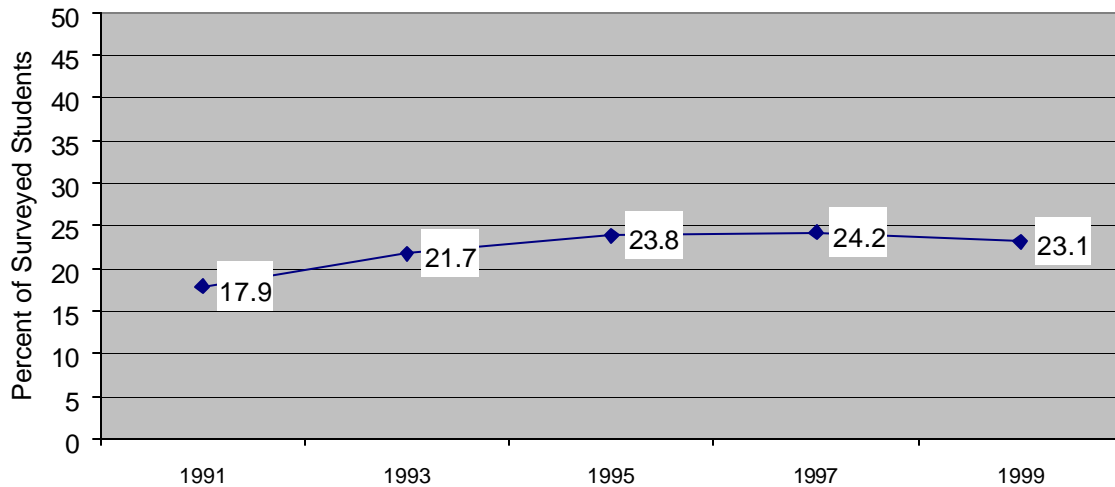
Percent of students that reported cigarette use among surveyed San Diego City high school students, 1991, 1993, 1995, 1997 and 1999

Year	Surveyed San Diego City High School Students Cigarette Use	
	Percentage	95% CI
1991	17.9	13.2 – 22.7
1993	21.7	19.1 – 24.3
1995	23.8	21.3 – 26.3
1997	24.2	22.1 – 26.3
1999	23.1	20.5 – 25.7

Note: Cigarette use is having smoked cigarettes on one or more of the past 30 days.

Source: San Diego City Schools, Educational Services Division, Comprehensive Health, Physical Education and Wellness

**Percent of Students that Reported Cigarette Use  
Among Surveyed San Diego City High School Students:  
1991, 1993, 1995, 1997, 1999**



Note: Cigarette use is having smoked cigarettes on one or more of the past 30 days.

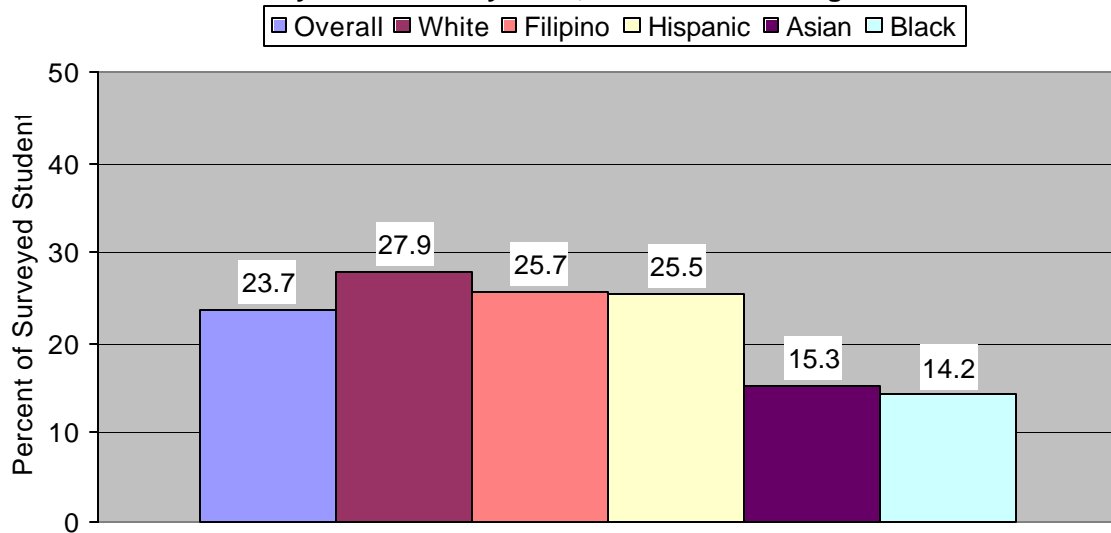
Source: San Diego City Schools, Educational Services Division, Comprehensive Health, Physical Education and Wellness

Percent of students that reported cigarette use among surveyed San Diego City high school students by race/ethnicity, 3-year average percentages, 1995, 1997 and 1999

Percent of Students that Reported Cigarette Use Among Surveyed San Diego City High School Students by Race/Ethnicity 3-Year Averages, 1995, 1997 & 1999					
Overall	White	Hispanic	Black	Asian	Filipino
23.7	27.9	25.5	14.2	15.3	25.7

Note: Percentages are among surveyed students within each race/ethnicity. Native American students were too few in number for representative results. Cigarette use is having smoked cigarettes on one or more of the past 30 days. Source: San Diego City Schools, Educational Services Division, Comprehensive Health, Physical Education and Wellness

**Percent of Students that Reported Cigarette Use Among Surveyed San Diego City High School Students by Race/Ethnicity: 1995, 1997 & 1999 Average**



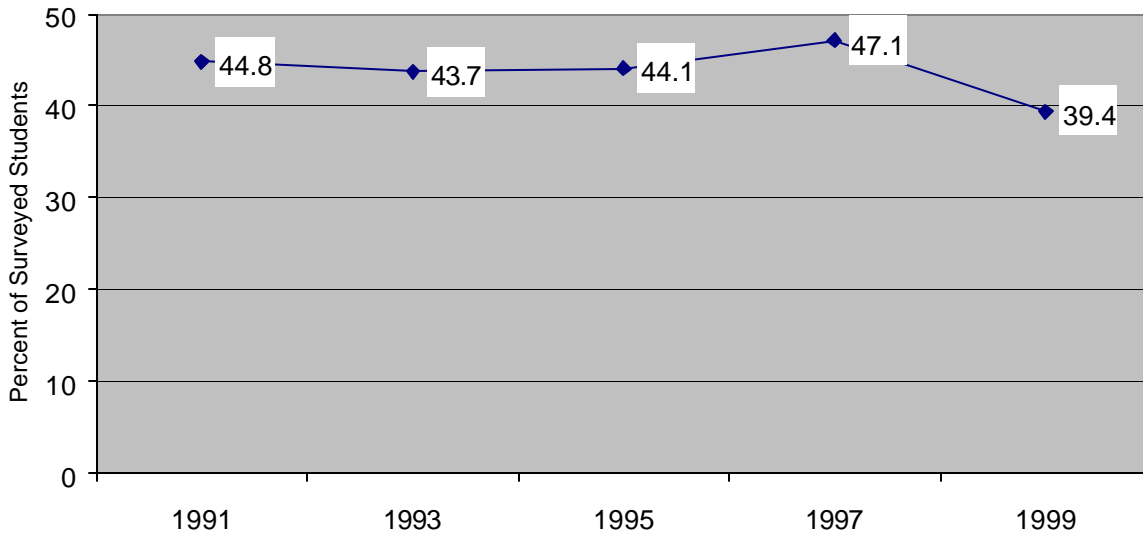
Note: Percentages are among surveyed students within each race/ethnicity. Native American students were too few in number for representative results. Cigarette use is having smoked cigarettes on one or more of the past 30 days. Source: San Diego City Schools, Educational Services Division, Comprehensive Health, Physical Education and Wellness

Percent of students that reported alcohol use among surveyed San Diego City high school students, 1991, 1993, 1995, 1997 and 1999

Year	Percent of Students that Reported Alcohol Use Among Surveyed San Diego City High School Students	
	Percentage	95% CI
1991	44.8	40.3 – 49.3
1993	43.7	40.6 – 46.8
1995	44.1	40.8 – 47.3
1997	47.1	44.4 – 49.9
1999	39.4	35.5 – 43.3

Note: Alcohol use is having had at least one drink of alcohol on one or more of the past 30 days.  
 Source: San Diego City Schools, Educational Services Division, Comprehensive Health, Physical Education and Wellness

**Percent of Students that Reported Alcohol Use Among Surveyed San Diego City High School Students: 1991, 1993, 1995, 1997, 1999**



Note: Alcohol use is having had at least one drink of alcohol on one or more of the past 30 days.  
 Source: San Diego City Schools, Educational Services Division, Comprehensive Health, Physical Education and Wellness

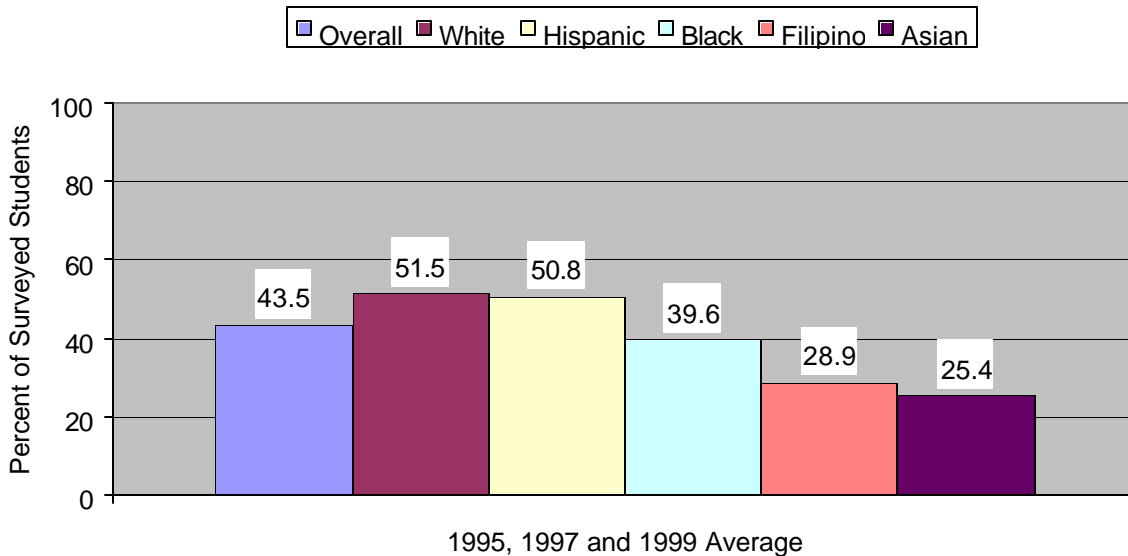
Percent of students that reported alcohol use among surveyed San Diego City high school students by race/ethnicity, 3-year average percentages, 1995, 1997 and 1999

Percent of Students that Reported Alcohol Binge Use Among Surveyed San Diego City High School Students by Race/Ethnicity 3-Year Averages, 1995, 1997 & 1999					
Overall	White	Hispanic	Black	Asian	Filipino
43.5	51.5	50.8	39.6	25.4	28.9

Note: Percentages are among surveyed students within each race/ethnicity. Native American students were too few in number for representative results. Alcohol use is having had at least one drink of alcohol on one or more of the past 30 days.

Source: San Diego City Schools, Educational Services Division, Comprehensive Health, Physical Education and Wellness

**Percent of Students that Reported Alcohol Use Among Surveyed San Diego City High School Students by Race/Ethnicity: 1995, 1997 & 1999 Average**



Note: Percentages are among surveyed students within each race/ethnicity. Native American students were too few in number for representative results. Alcohol use is having had at least one drink of alcohol on one or more of the past 30 days.

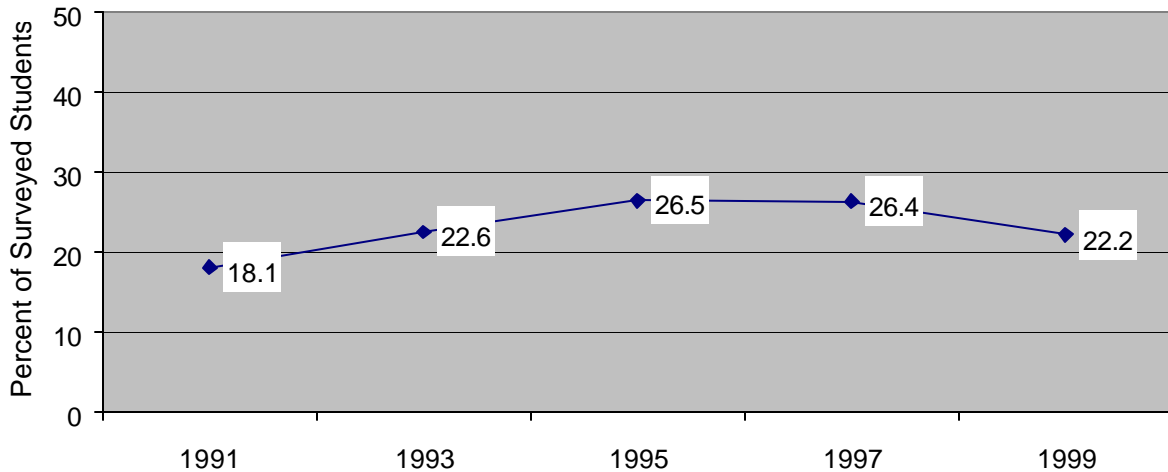
Source: San Diego City Schools, Educational Services Division, Comprehensive Health, Physical Education and Wellness

Percent of students that reported marijuana use among surveyed San Diego City high school students, 1991, 1993, 1995, 1997 and 1999

Year	Percent of Students that Reported Marijuana Use Among Surveyed San Diego City High School Students	
	Percentage	95% CI
1991	18.1	14.3 – 21.9
1993	22.6	19.6 – 25.6
1995	26.5	23.7 – 29.3
1997	26.4	24.0 – 28.8
1999	22.2	19.4 – 25.1

Note: Marijuana use is having used marijuana one or more times in the past 30 days.  
 Source: San Diego City Schools, Educational Services Division, Comprehensive Health, Physical Education and Wellness.

**Percent of Students that Reported Marijuana Use Among Surveyed San Diego City High School Students: 1991, 1993, 1995, 1997, 1999**



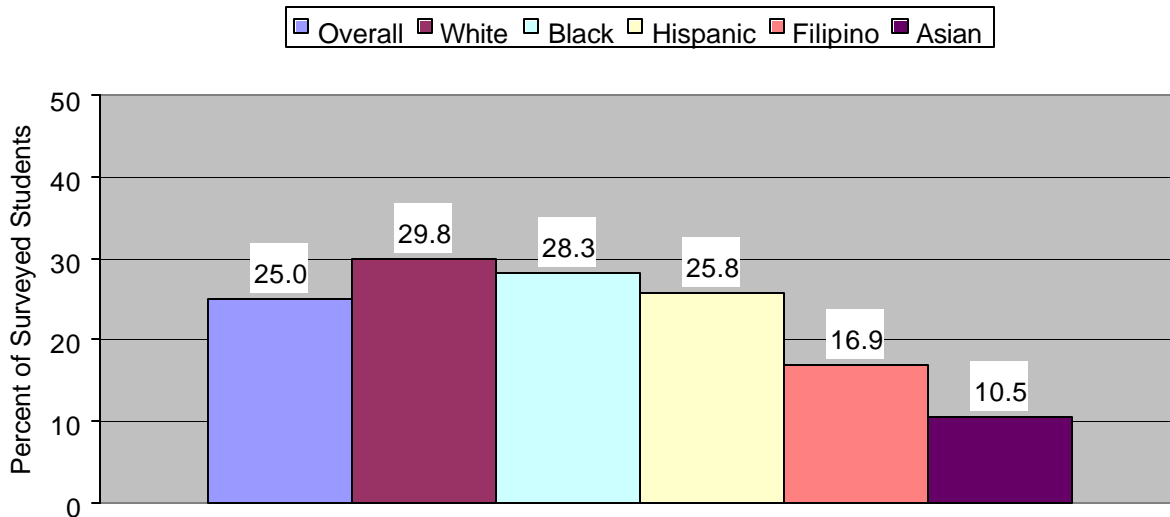
Note: Marijuana use is having used marijuana one or more times in the past 30 days.  
 Source: San Diego City Schools, Educational Services Division, Comprehensive Health, Physical Education and Wellness.

Percent of students that reported marijuana use among surveyed San Diego City high school students by race/ethnicity, 3-year average percentages, 1995, 1997 and 1999

Percent of Students that Reported Marijuana Use Among Surveyed San Diego City High School Students by Race/Ethnicity 3-Year Averages, 1995, 1997 & 1999					
Overall	White	Hispanic	Black	Asian	Filipino
25.0	29.8	25.8	28.3	10.5	16.9

Note: Percentages are among surveyed students within each race/ethnicity. Native American students were too few in number for representative results. Marijuana use is having used marijuana one or more times in the past 30 days.  
Source: San Diego City Schools, Educational Services Division, Comprehensive Health, Physical Education and Wellness

**Percent of Students that Reported Marijuana Use Among  
Surveyed San Diego City High School Students by Race/Ethnicity:  
1995, 1997 & 1999 Average**



Note: Percentages are among surveyed students within each race/ethnicity. Native American students were too few in number for representative results. Marijuana use is at least one time use in the past 30 days.  
Source: San Diego City Schools, Educational Services Division, Comprehensive Health, Physical Education and Wellness

## **APPROPRIATE ACCESS TO SERVICES**

### **Publicly Funded Subsidized Child Care Spaces**

**Definition:** Under development

**Source:** San Diego County Child Care and Development Planning Council. *Meeting the Child Care Needs of San Diego County Families*. January 2000.

**Methodology:** The estimated number of children currently eligible for subsidized child care programs is based on families' reported income. Families with incomes less than 75% of the California median income are deemed eligible by the state.

**Data:** An estimated 172,772 children are financially eligible to participate in publicly funded subsidized childcare. However, there are many more children who financially qualify and are in need than there are spaces available for them. It is estimated that currently there are only subsidized spaces for one out of ten of these children.

**Note:** The methodology used in previous Report Card publications was changed. Neither California data nor San Diego County racial/ethnic data are available for this measure. Data by Health and Human Services Agency regional areas are also not available.

## Percent of Young Children That Are Adequately Immunized

**Definition:** Estimated percent of young children that were up-to-date on the 4:3:1 series (DTP, Polio, MMR) between 19 and 36 months of age

**Sources:** County of San Diego, Health and Human Services Agency, Infant Immunization Initiative, Immunization Program Random Digit Dialing Survey; Centers for Disease Control, National Immunization Survey

**Methodology:** For the purposes of this Report Card measure, adequate immunization refers to the 4-DTP, 3-Polio, 1-MMR series that, according to universal recommendations, young children should have received by age 2 years. Two sources of survey data, the Centers for Disease Control (CDC) and the County of San Diego Health and Human Services Agency (HHS), are used for this measure and are presented separately below. Both the CDC and HHS surveys provide estimates of vaccination with the 4-3-1 series among children 19-36 months of age in San Diego County. The Centers for Disease Control's (CDC) National Immunization Survey provides an annual estimate of vaccination coverage among young children nationally, within each of the 50 states, and selected urban areas. Estimated vaccination coverage for California and the United States are presented with San Diego County data from the CDC. The CDC bases its immunization estimates in San Diego County on a survey sample of 440 respondents each year. The Immunization Program Random Digit Dialing Survey, conducted by the County of San Diego HHS, is a local survey that is separate from the CDC national survey. The number interviewed in this survey has steadily increased over the past five years from 400 in 1995 to 795 in 2000. As well as overall vaccination coverage levels among young children in San Diego County, the annual HHS survey provides an estimate of the vaccination coverage of Hispanic children in San Diego County (a 3-year average percentage is presented). Percentages and confidence intervals (95% CI) are provided to the first decimal point for the HHS data.

### Data:

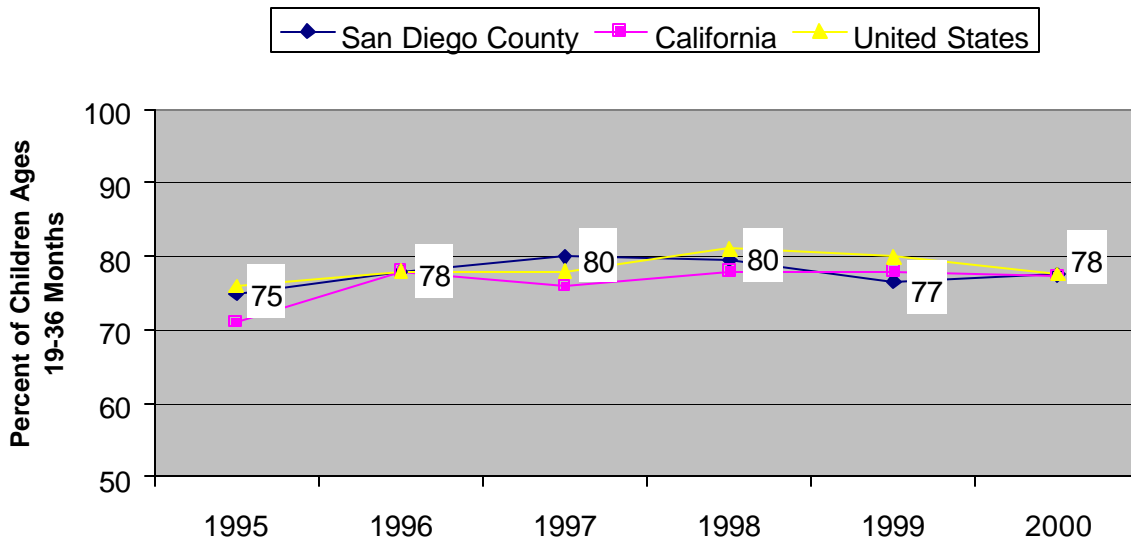
Estimated percent of young children that are adequately immunized in San Diego County, California and the United States, 1995-2000 (CDC Survey)

Year	Estimated Percent of Young Children that Are Adequately Immunized (DTP, Polio, MCV series)		
	San Diego County	California	United States
1995	75	71	76
1996	78	78	78
1997	80	76	78
1998	80	78	81
1999	77	78	80
2000	78	77	78

Notes: These are the estimated vaccination coverage levels among children aged between 19 and 36 months. Percentages have been rounded up to whole numbers.

Sources: Centers for Disease Control (CDC), National Immunization Survey

**Estimated Percent of Young Children Adequately Immunized  
1995-2000**



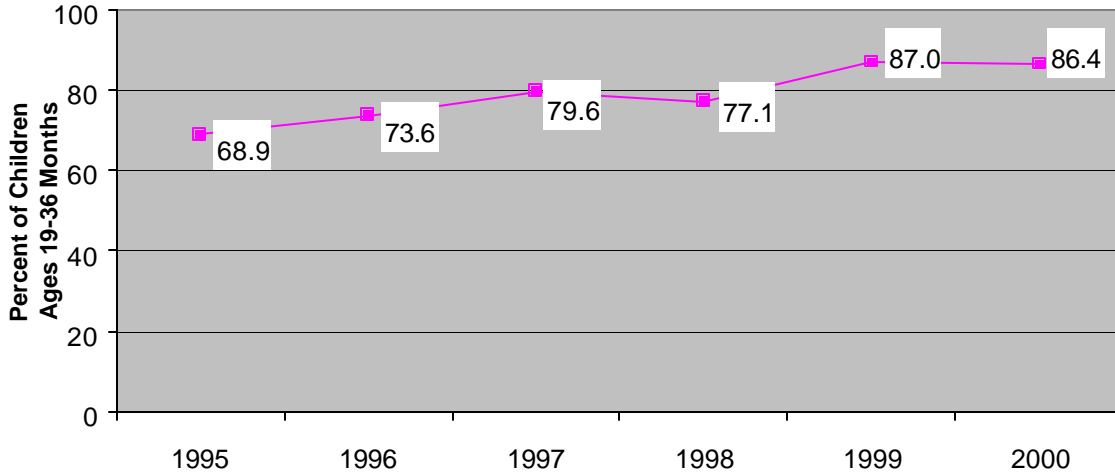
Note: This measure is specific to the 4:3:1 series (DTP, Polio, MMR) that the child should have completed by age two years. Numbered values are shown for San Diego County only and have been rounded.  
Source: Centers for Disease Control (CDC), National Immunization Survey

Estimated percent of young children that are adequately immunized in San Diego County, 1995-2000 (HHSA Survey)

Year	Estimated Percent of Young Children that Are Adequately Immunized in San Diego County (DTP, Polio, MCV series)	
	Percentage	95% CI
1995	68.9	62.9 – 74.9
1996	73.6	68.2 – 79.0
1997	79.6	75.0 – 84.2
1998	77.1	72.4 – 81.8
1999	87.0	84.0 – 90.0
2000	86.4	83.4 – 89.4

Notes: These are the estimated vaccination coverage levels among children aged between 19 and 36 months.  
Source: County of San Diego, Health and Human Services Agency (HHSA), Infant Immunization Initiative, Immunization Program Random Digit Dialing Survey

**Percent of Young Children Who Are Adequately Immunized  
San Diego County: 1995-2000**



Note: This measure is specific to the 4:3:1 series (DTP, Polio, MMR) that the child should have completed by age two years.

Source: County of San Diego, Health and Human Services Agency (HHSA), Infant Immunization Initiative, Immunization Program Random Digit Dialing Survey

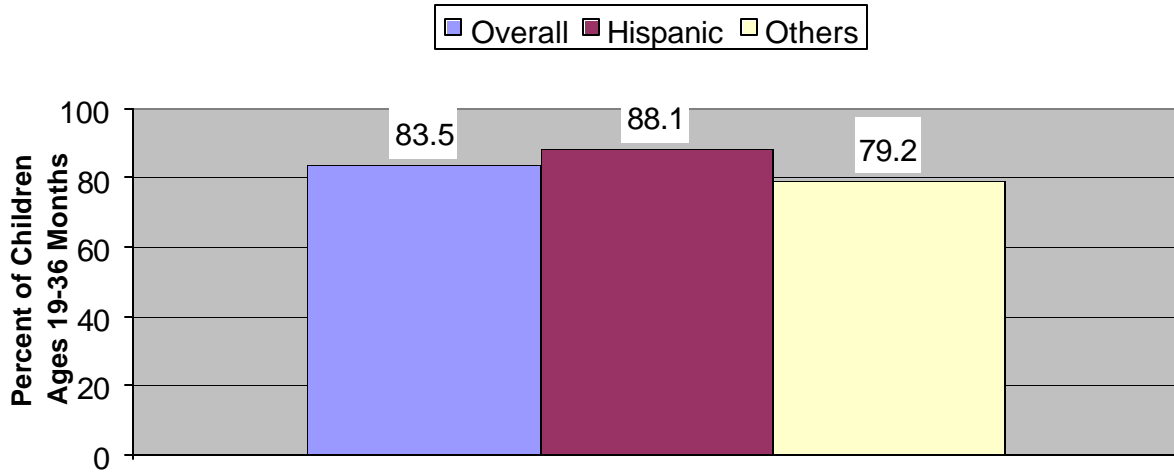
Estimated percent of young children that are adequately immunized by race/ethnicity in San Diego County, 3-year averages, 1998-2000 (HHSA Survey)

<b>Estimated Percent of Young Children Adequately Immunized (DTP, Polio, MCV series) in San Diego County 3-Year Average Percentages, 1998-2000</b>		
<b>Overall</b>	<b>Hispanic</b>	<b>Others</b>
83.5	88.1	79.2

Note: Others include White, Black, Asian and others.

Source: County of San Diego, Health and Human Services Agency (HHSA), Infant Immunization Initiative, Immunization Program Random Digit Dialing Survey

**Estimated Percent of Young Children Adequately Immunized  
by Race/Ethnicity in San Diego County  
1998 - 2000 Average**



Note: This measure is specific to the 4:3:1 series (DTP, Polio, MMR) that the child should have completed by age two years. Others include White, Black, Asian and others.

Source: County of San Diego, Health and Human Services Agency (HHS), Infant Immunization Initiative, Immunization Program Random Digit Dialing Survey

Note: Data are not available by Health and Human Services Agency regional areas.

## Percent of Children and Youth with Health Insurance

**Definition:** Estimated percent of children ages 0-18 that have private or government health insurance including employment provided, privately purchased, Medicare, Champus, or Medi-Cal

**Sources for San Diego County Data:** Center for Health Policy Research, University of California, Los Angeles; United States Census Bureau, Current Population Survey, March Supplement; Outcomes and Community Impact Measurement Program, United Way of San Diego

**Source of California and United States Data:** H.H. Schauffler and E.R. Brown. *The State of Health Insurance in California: Recent Trends, Future Prospects*. Berkeley, CA: Regents of the University of California, March 2001. <http://www.healthpolicy.ucla.edu/publications>

**Methodology:** Two sources of San Diego County health insurance data are used to provide a range of estimated health insurance coverage among children. These data are described and presented separately below. Comparison is made to state and national estimated percentages in 1999 from the United States Census Bureau as published by the source for California and United States data cited above. A single-year estimate for these larger population samples is considered more reliable than a single-year estimate at the county-level; therefore the state and national percentages are not averaged.

The Outcomes and Community Impact Program of the United Way of San Diego collected data via telephone interviews among randomly selected households throughout San Diego County in 1999 and 2000. The surveys included 3,721 interviews in 1999 and 3,711 in 2000. As part of these surveys, respondents were asked if children age 18 and under and living in the household are currently covered by medical insurance. Coverage was defined as employer provided, privately purchased, Medicare, Medi-Cal or a military benefit (Champus). Data were available by race/ethnicity and geographic region in San Diego County and are presented.

To develop estimates of health insurance coverage, the Center for Health Policy Research at UCLA uses data from the Current Population Survey (CPS), which is conducted by the United States Census Bureau each year. The CPS includes a number of questions asking about insurance coverage and type of coverage during the preceding year of the survey. Respondents and their dependents that were covered by any insurance source at any time during the preceding year are counted as insured for the purposes of the survey. The sample size of the population in California is very large and allows fairly precise estimates of the insurance coverage within the state. However, estimations of coverage for specific population groups, such as those defined by age are less accurate due to smaller sample sizes. Averaging the percentages over several surveys reduces the sampling error within these subgroups in San Diego County. Average estimates of insurance coverage among children ages 0-17 for the years 1995-1997 and among children ages 0-18 for the years 1996-1998, 1997-1999 were available from this source and are presented.

**Data:**

Estimated percent of children ages 0-18 with health insurance coverage in San Diego County, 1999 and 2000 (United Way Survey)

Estimated Percent of Children Ages 0-18 with Health Insurance Coverage in San Diego County	
1999	2000
86	89

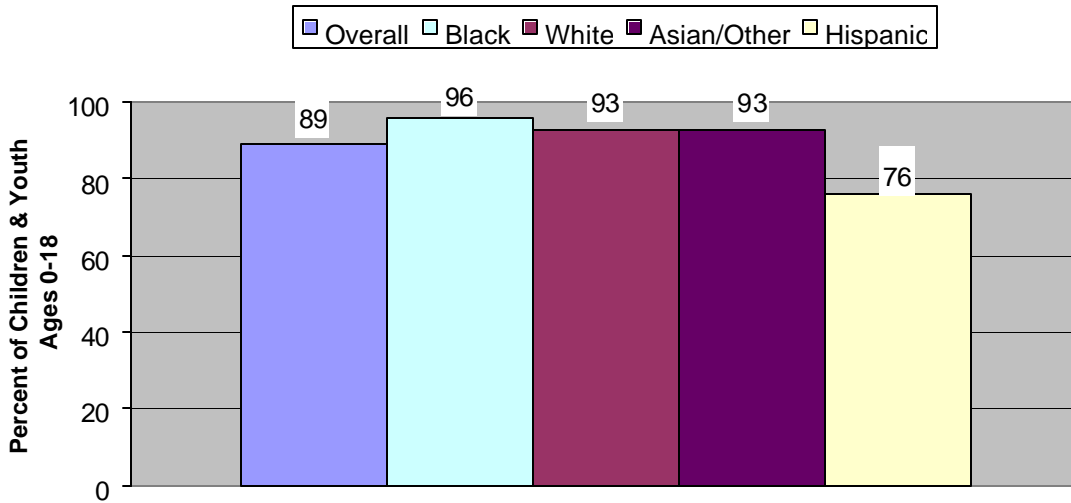
Source: Outcomes and Community Impact Program, United Way of San Diego, 1999 & 2000

Estimated percent of children ages 0-18 with health insurance coverage in San Diego County by race/ethnicity, 2000 (United Way Survey)

Estimated Percent of Children Ages 0-18 with Health Insurance Coverage by Race/Ethnicity in San Diego County	
Race/Ethnicity	2000
Overall	89
White	93
Hispanic	76
Black	96
Asian/Other	93

Source: Outcomes and Community Impact Program, United Way of San Diego, 2000

**Percent of Children and Youth with Health Insurance  
by Race/Ethnicity in San Diego County: 2000**



Source: Outcomes and Community Impact Program, United Way of San Diego, 2000

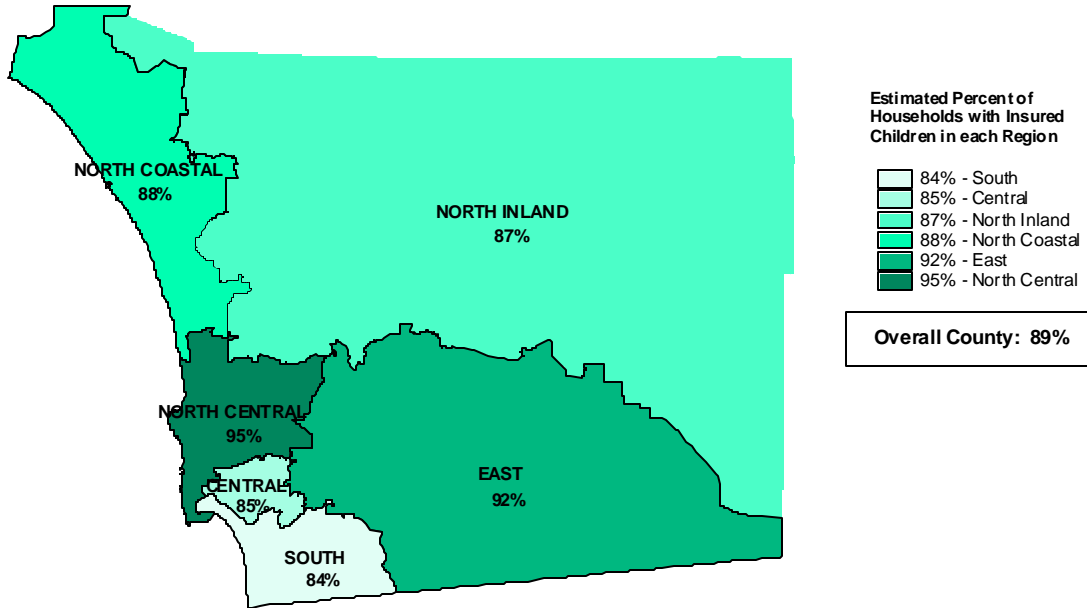
Estimated percent of children ages 0-18 with health insurance coverage by Health and Human Services Agency regional areas in San Diego County, 2000 (United Way Survey)

Estimated Percent of Children Ages 0-18 with Health Insurance Coverage in San Diego County by Health and Human Services Agency Regional Areas, 2000					
North Coastal	North Inland	North Central	Central	East	South
88	87	95	85	92	84

Note: The overall County percentage is 89.

Source: Outcomes and Community Impact Program, United Way of San Diego, 2000

**Percent of Children and Youth with Health Insurance in San Diego County  
by Health and Human Services Agency Regional Areas  
2000**



Note: Includes insurance provided by employer, purchased privately, Medi-Cal, Medicare, or Champus  
Source: United Way of San Diego County, Outcomes & Community Impact Program, 2000

Estimated Percent of Children with Health Insurance Coverage, San Diego County,  
3-Year-Average Percentages, 1995-1997, 1996-1998 and 1997-1999 (CPS)

Estimated Percent of Children with Health Insurance Coverage in San Diego County		
1995-1997 3-Year Average Percentage	1996-1998 3-Year Average Percentage	1997-1999 3-Year Average Percentage
82	79	81

Note: The 1995-1997 percentage is among children ages 0-17, the 1996-1998 and 1997-1999 percentages are among children ages 0-18. Percentages have been rounded.  
Sources: Current Population Survey (CPS), United States Census Bureau (data analysis from the Center for Health Policy Research, University of California, Los Angeles)

## SAFE ENVIRONMENT

### Rate of Substantiated Cases of Child Abuse/Neglect

**Definition:** Annual number of children ages 0-17 determined by a social worker to have been a victim of child abuse/neglect per 1,000 children ages 0-17 per year. Child abuse/neglect is defined by Section 11165.6 State Penal Code and may include intentional physical injury of a child by another person, sexual abuse including both sexual assault and sexual exploitation, willful cruelty or unjustifiable punishment of a child, cruel or inhuman corporal punishment, or neglect including both severe and general neglect of the child.

**Note:** The State of California legislated change in the definitions of child abuse/neglect report dispositions in 1999. One result of this was that criteria for substantiated cases were narrowed (e.g. more evidence was required for a report to be considered a substantiated case). When the new definitions were implemented in late 1999, all staff were retrained to use these revised category definitions. Therefore, the 1998 and 1999 rates are not comparable to that of 2000.

**Source:** County of San Diego, Health and Human Services Agency, Children's Services

**Calculation:** The number of substantiated cases of child abuse/neglect occurring in one year is divided by the estimated population of children ages 0-17 that respective year. This result is multiplied by 1,000 and rounded up to the first decimal place. Confidence intervals (95% CI) for each rate were calculated.

#### Data:

Annual number and rate of substantiated cases of abuse/neglect of children ages 0-17 in San Diego County, 1998-2000

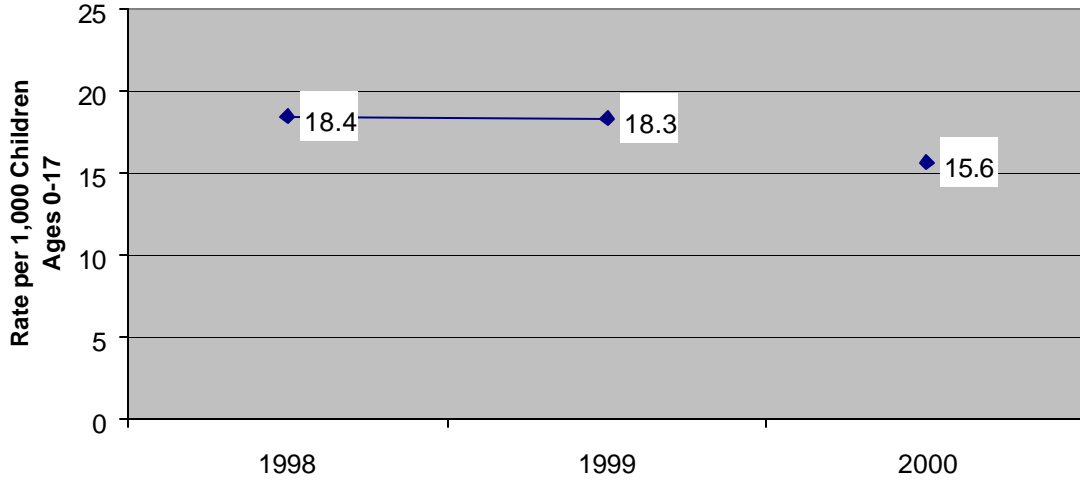
Year	Population, Ages 0-17	Substantiated Cases of Child Abuse/Neglect Among Children Ages 0-17		
		Number	Rate	95% CI
1998	732,198	13,467	18.4	18.1 – 18.7
1999	747,690	13,696	18.3	18.0 – 18.6
2000	764,235	11,896	15.6	15.3 – 15.8

Rates are per 1,000 population ages 0-17.

Note: These data were updated by Children's Services and are different from those reported in the 2000 publication of this document.

Sources: County of San Diego, Health and Human Services Agency, Children's Services; San Diego County population estimates were obtained from SANDAG

**Rate of Substantiated Cases of Child Abuse/Neglect  
San Diego County, 1998-2000**



Note: Due to the legislated change in the definition of categories of child abuse and neglect case dispositions that was implemented in late 1999, year 2000 data should not be compared to previous years.

Sources: County of San Diego, Health and Human Services Agency, Children’s Services; San Diego County population estimates used in rate calculations were obtained from SANDAG

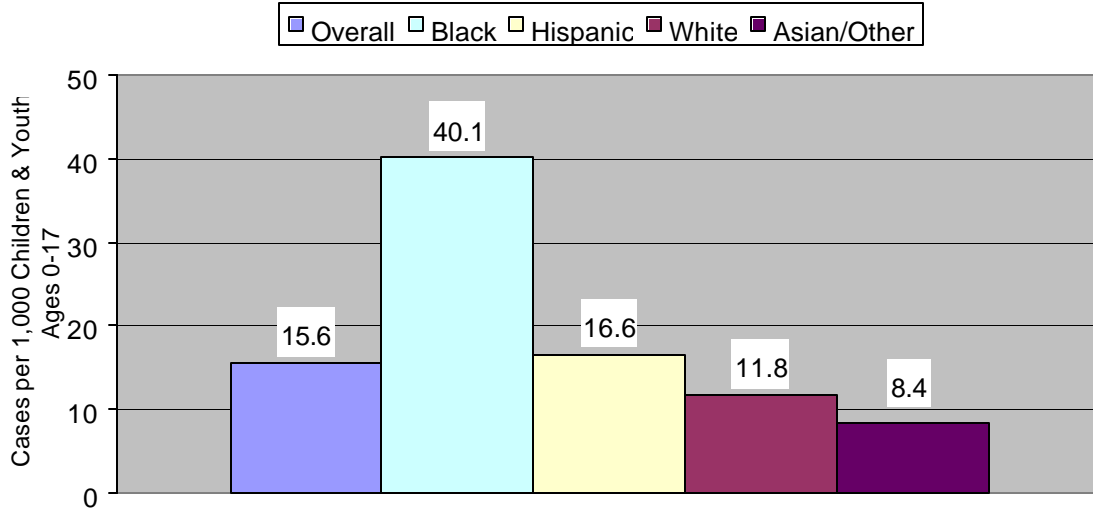
Rate of substantiated cases of child abuse/neglect ages 0-17 by race/ethnicity in San Diego County, 2000

Rate of Substantiated Cases of Child Abuse/Neglect Ages 0-17 by Race/Ethnicity, 2000		
Race/Ethnicity	2000 Rate	95% CI
Overall	15.6	15.3 – 15.8
White	11.8	11.4 – 12.1
Hispanic	16.6	16.1 – 17.1
Black	40.1	38.4 – 41.8
Asian/Other	8.4	7.7 – 9.0

Note: Rates are per 1,000 children ages 0-17 in each race/ethnicity.

Sources: County of San Diego, Health and Human Services Agency, Children’s Services; San Diego County population estimates used in rate calculations were obtained from SANDAG

**Rate of Substantiated Cases of Child Abuse/Neglect  
by Race/Ethnicity in San Diego County  
2000**



Sources: County of San Diego, Health and Human Services Agency, Children's Services; San Diego County population estimates used in rate calculations were obtained from SANDAG

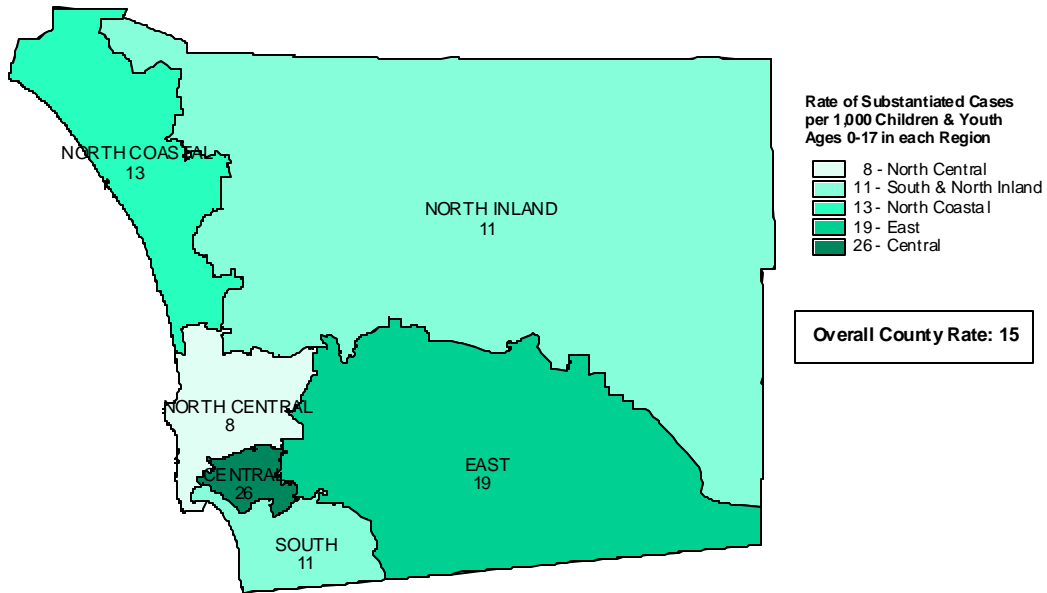
Rate of substantiated cases of child abuse/neglect in San Diego County by Health and Human Services Agency regional areas, 2000

Rate of Substantiated Cases of Child Abuse/Neglect in San Diego County by Health and Human Services Agency Regional Areas 2000		
Region	2000 Rate	95% CI
County Overall	14.9	14.6 – 15.2
North Coastal	13.3	12.7 – 13.9
North Inland	10.8	10.3 – 11.4
North Central	8.4	7.9 – 8.9
Central	26.0	25.2 – 26.8
East	18.6	17.8 – 19.3
South	11.0	10.4 – 11.6

Note: Rates are per 1,000 children ages 0-17 in each region.

Sources: County of San Diego, Health and Human Services Agency, Children's Services; San Diego County population estimates used in rate calculations were obtained from SANDAG

**Rate of Substantiated Cases of Child Abuse/Neglect in San Diego County  
by Health and Human Services Agency Regional Areas  
2000**



Note: Rates have been rounded and do not include cases with invalid or unknown zip codes (3% of cases)  
 Source: County of San Diego, Health and Human Services Agency, Children's Services; San Diego County population estimates used in rate calculations were obtained from SANDAG

## Rate of Domestic Violence Reports

**Definition:** Annual number of law enforcement responded domestic violence-related cases and calls per 1,000 households. Domestic violence is defined as “intentionally or recklessly causing or attempting to cause bodily injury, or placing another person in reasonable apprehension of imminent serious bodily injury to himself or another” (Section 13700 State Penal Code). These incidents include violent crimes against spouses, former spouses, cohabitants, individuals who have parented a child together, or persons having a dating or engagement relationship. Victims include adult males and females and fully emancipated minors.

**Sources:** Automated Regional Justice Information System (ARJIS), San Diego Data Processing Corporation

Estimates of households were obtained from SANDAG (for households within the HHS regional areas) and from the State of California, Department of Finance, *City/County Population and Housing Estimates, 1991-1999 with 1990 census counts*. Sacramento, California, May 1999.

**Methodology/Calculation:** The Automated Regional Justice Information System (ARJIS) is a complex law enforcement computer system from which comprehensive regional criminal justice statistics can be obtained. The San Diego County Data Processing Corporation transfers data from ARJIS into the Crime Analysis Statistical System (CASS). It is through this system and analysis that the number of domestic violence reports is obtained. These reports include both cases and calls related to domestic violence. Cases represent crime reports associated with domestic violence that are documented by a law enforcement officer. Calls represent documented calls for service in which a law enforcement officer determined that domestic violence was associated with the call but did not have enough evidence for a criminal case. The domestic violence rate per household per year was calculated by dividing the annual number of reports in the county by the estimated number of households in the county each respective year. This number was then multiplied by 1,000 and the result was rounded up to the first decimal place. Corresponding confidence intervals (95% CI) were also calculated. Rates within each of the Health and Human Services Agency regional areas were calculated based on the number of domestic violence reports and number of households within each region. The data could contain more than one report per household. ARJIS is a regional information system and does not provide statistics for the state of California.

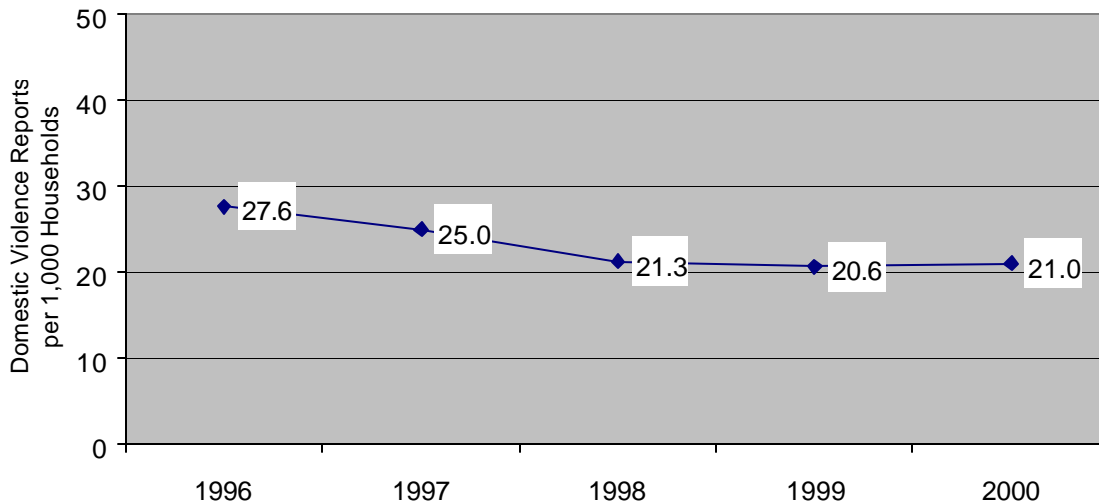
**Data:**

Number and rate of domestic violence reports in San Diego County, 1996-2000

Year	Number and Rate of Domestic Violence Reports in San Diego County, 1996-1999			
	Number of Reports	Number of Households	Rate per 1,000 Households	95% C.I.
1996	25,841	937,531	27.6	27.2 – 27.9
1997	23,625	944,044	25.0	24.7 – 25.3
1998	20,231	951,818	21.3	21.0 – 21.5
1999	19,866	962,401	20.6	20.4 – 21.0
2000	20,424	974,423	21.0	20.7 – 21.2

Sources: Automated Regional Justice Information System (ARJIS), San Diego Data Processing Corporation; household numbers used in the calculation of rates were obtained from the State of California, Department of Finance

**Rate of Domestic Violence Reports in San Diego County  
1996-2000**



Sources: Automated Regional Justice Information System (ARJIS), San Diego Data Processing Corporation; household numbers used in the calculation of rates were obtained from the State of California, Department of Finance

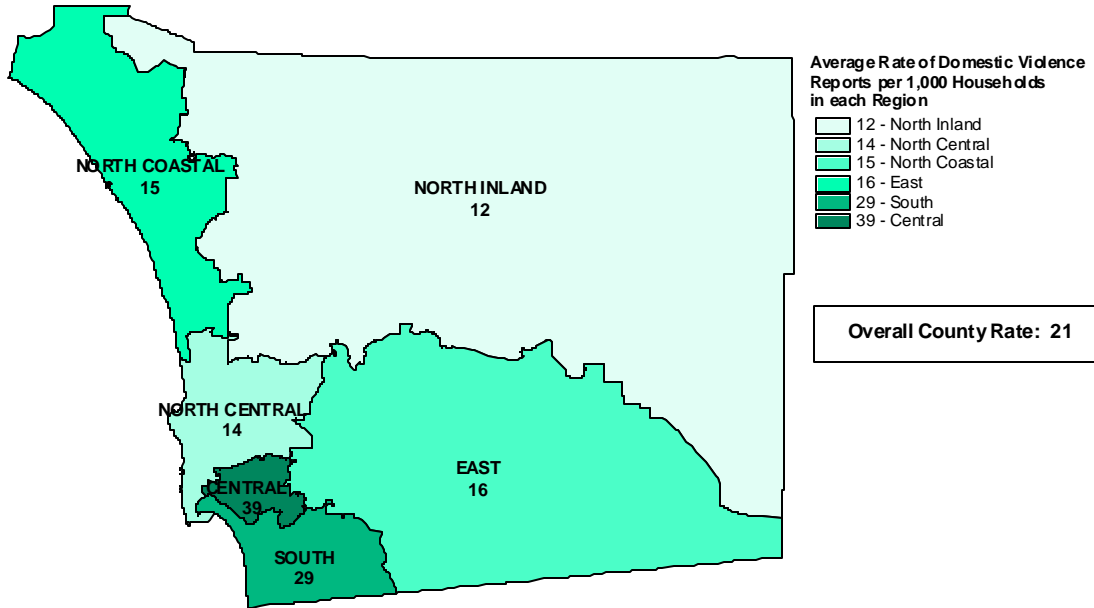
Rate of domestic violence reports in San Diego County by Health and Human Services Agency regional areas, 3-year averages, 1998-2000

Rate of Domestic Violence Reports in San Diego County by Health and Human Services Agency Regional Areas 1998-2000		
Region	3-Yr. Avg. Rate	95% CI
County Overall	21.0	20.7 – 21.2
North Coastal	14.5	13.9 – 15.1
North Inland	11.9	11.4 – 12.4
North Central	13.9	13.4 – 14.4
Central	39.2	38.3 – 40.2
East	15.9	15.3 – 16.5
South	29.0	28.0 – 29.9

Rates are per 1,000 households in each region.

Source: Automated Regional Justice Information System, San Diego Data Processing Corporation; San Diego County household estimates used in rates calculations were obtained from SANDAG

**Rate of Domestic Violence Reports in San Diego County  
by Health and Human Services Agency Regional Areas  
1998-2000**



Note: Rates have been rounded and do not include reports with invalid zip codes (approximately 5% of reports). Rates represent law-enforcement responded reports of domestic violence.  
 Source: Automated Regional Justice Information System, San Diego Data Processing Corporation; San Diego County household estimates used in rate calculations were obtained from SANDAG

Note: No San Diego County racial/ethnic data were available regarding victims of domestic violence. No comparable data for the State were available.

## Rate of Court Cases Filed Against Youth Offenders

**Definition:** Number of delinquency petitions filed in juvenile court per 1,000 children and youth ages 10-17 per year

**Source:** County of San Diego, Probation Department

**Methodology/Calculation:** Following arrest of a juvenile offender, a delinquency petition may be filed in juvenile court by request of the Probation Department to the District Attorney. Not every juvenile arrest will be referred for court prosecution. The number of delinquency petitions filed in San Diego County juvenile court within a year was divided by the population, ages 10-17, in that respective year. This number was then multiplied by 1,000 and rounded up to the first decimal place for the presented rate. The age range of 10-17 represents the majority of juvenile offenders and provides the most reliable rate calculation for the resident population of children and youth. The rates for several race/ethnic categories were calculated based on the race/ethnicity of the offender and the population in each category. These rates are presented as three-year averages (1998-2000). Rates within the Health and Human Services Agency regional areas are also presented as averages of the years 1998-2000. The type of charge in court cases filed against youth offenders in 2000 is also presented as supplemental information. Confidence intervals (95%) for rates were calculated and rounded up to the first decimal place. The regional rates are based on the offender's resident zip code as identified on each petition and are limited to the petitions that include valid San Diego County zip codes. As more than one petition may be filed per person each year, the information presented represents the number of delinquency petitions filed and is not equivalent to the number of youth for whom a petition has been filed. No State comparison data regarding the number of petitions filed in juvenile courts were available.

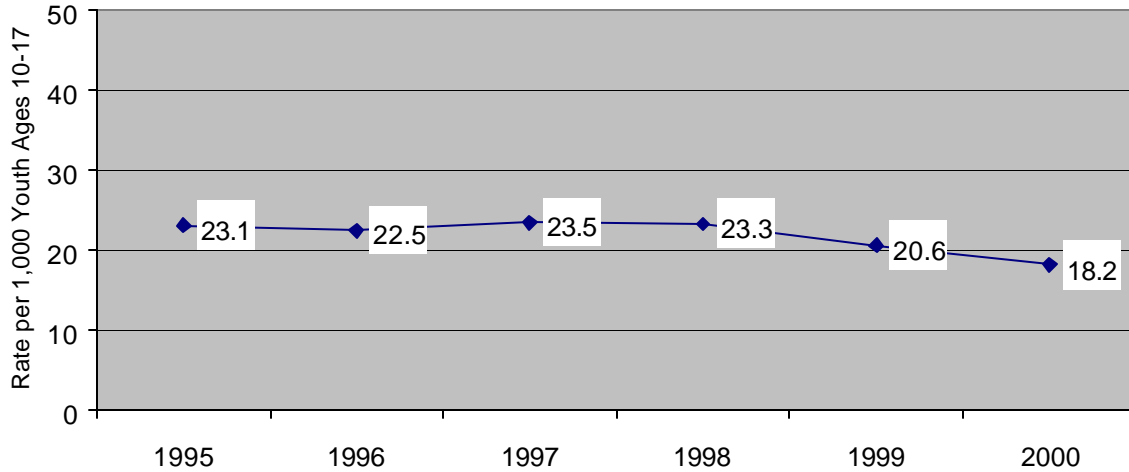
### Data:

Number and rate of court cases filed against youth offenders ages 10-17 in San Diego County, 1995-2000

Year	No. of Court Cases Filed	Children, Ages 10-17		
		Population	Rate of Cases per 1,000	95 % Confidence Interval
1995	6,195	268,741	23.1	22.5 – 23.6
1996	6,175	274,517	22.5	21.9 – 23.0
1997	6,675	283,570	23.5	23.0 – 24.1
1998	6,785	290,875	23.3	22.8 – 23.9
1999	6,128	298,219	20.6	20.0 – 21.1
2000	5,637	309,461	18.2	17.7 – 18.7

Sources: County of San Diego, Probation Department; San Diego County population estimates were obtained from SANDAG

**Rate of Court Cases Filed Against Youth Offenders in San Diego County  
1995-2000**



Sources: County of San Diego, Probation Department; San Diego County population estimates used in rate calculations were obtained from SANDAG

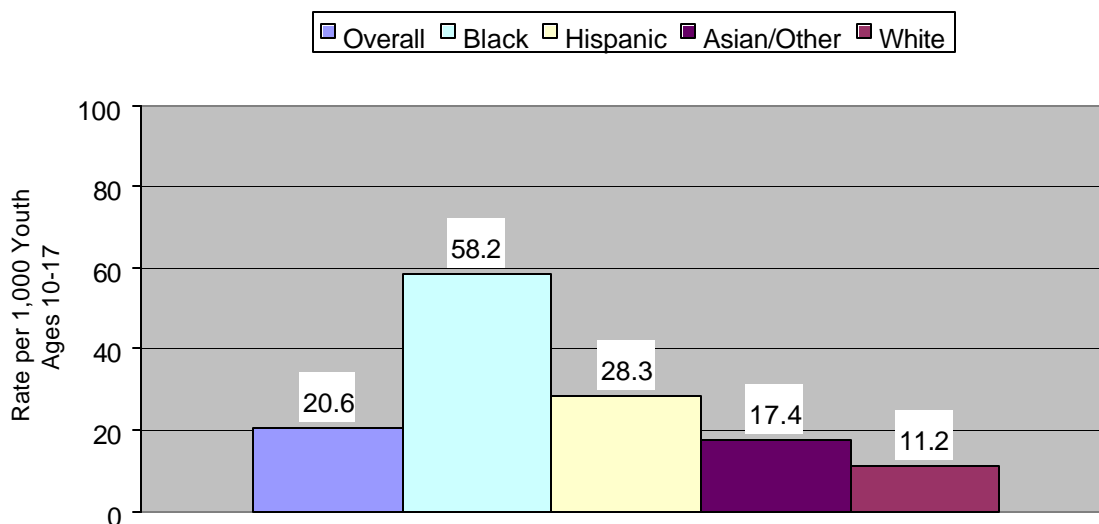
Rate of court cases filed against youth offenders ages 10-17 by race/ethnicity in San Diego County, 3-year averages, 1998-2000

Rate of Court Cases Filed Against Youth Offenders Ages 10-17 by Race/Ethnicity, 1998-2000		
Race/Ethnicity	3-yr. Avg. Rate	95% CI
Overall	20.6	20.1 – 21.2
White	11.2	10.7 – 11.7
Hispanic	28.3	27.2 – 29.4
Black	58.2	55.1 – 61.4
Asian/Other	17.4	15.9 – 18.9

Note: Rates are per 1,000 youth ages 10-17 in each race/ethnicity.

Sources: County of San Diego, Probation Department; San Diego County population estimates used in rate calculations were obtained from SANDAG

**Rate of Court Cases Filed Against Youth Offenders by Race/Ethnicity  
in San Diego County: 1998-2000 Average**



Sources: County of San Diego, Probation Department; San Diego County population estimates used in rate calculations were obtained from SANDAG

Type of charges in court cases filed against youth offender's ages 10-17 in San Diego County, 2000

Type of Charge in Court Cases Filed Against Youth Offenders Ages 10-17 in San Diego County, 2000		
Charge	Number	Percent of Cases
Felony	2,272	40.3
Misdemeanor	2,818	50.0
Other	547	9.7

Note: Other offences include probation violations and truancy.  
Source: County of San Diego, Probation Department

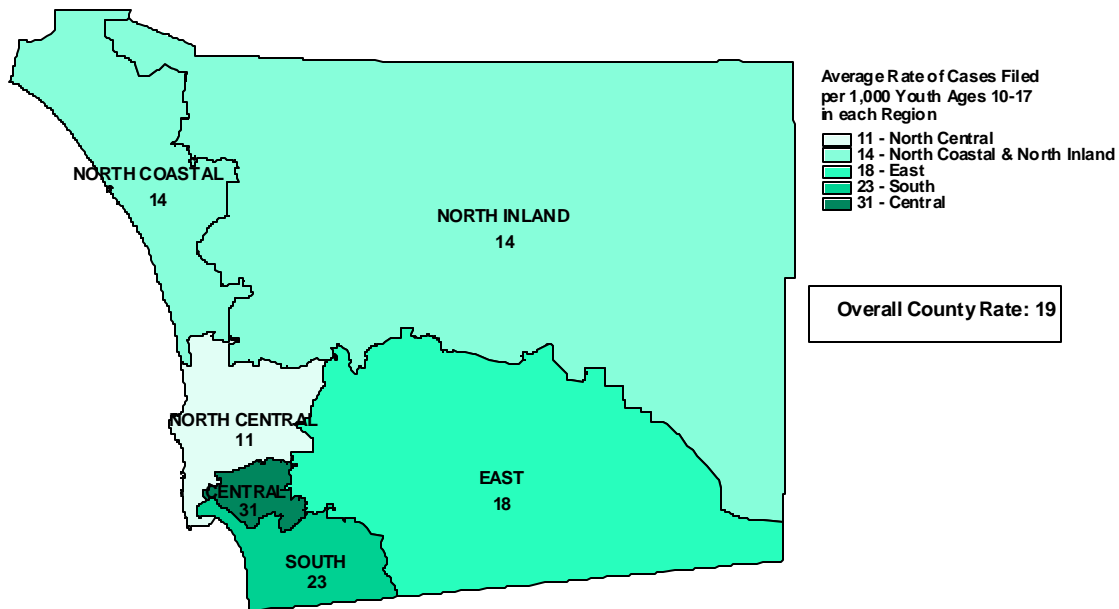
Rate of court cases filed against youth offenders in San Diego County by Health and Human Services Agency regional areas, 3-year average, 1998-2000

Rate of Court Cases Filed Against Youth Offenders Ages 10-17 by Health and Human Services Agency Regional Areas 1998-2000		
Region	3-yr. Avg. Rate	95% CI
County Overall	18.6	18.1 – 19.1
North Coastal	13.5	12.5 – 14.5
North Inland	14.2	13.2 – 15.2
North Central	11.5	10.5 – 12.4
Central	31.3	29.8 – 32.8
East	18.0	16.8 – 19.1
South	22.8	21.4 – 24.2

Note: Rates are based on resident zip codes of youth offenders, ages 10-17, and number of youth ages 10-17 within each HHSA region.

Sources: County of San Diego, Probation Department; San Diego County population estimates used in rate calculations were obtained from SANDAG

**Rate of Court Cases Filed Against Youth Offenders in San Diego County  
by Health and Human Services Agency Regional Areas  
1998 - 2000**



Note: Rates have been rounded and do not include cases with invalid or out-of-county zip codes (8.2% of cases).  
Source: County of San Diego, Probation Department; San Diego County population estimates used in rate calculations were obtained from SANDAG

Note: No California data were available for this measure.

## Rate of Violent Crime Victimization of Children and Youth

**Definition:** Number of victims (ages 0-11 and 12-17) of violent crimes (homicide, sexual victimization, robbery by force or threat of force, and aggravated assault) per 10,000 children ages 0-11 and 12-17, respectively, per year

**Sources:** Automated Regional Justice Information System (ARJIS), San Diego Data Processing Corporation

**Methodology/Calculation:** The Automated Regional Justice Information System (ARJIS) is a complex law enforcement computer system from which comprehensive regional criminal justice statistics can be obtained. The San Diego County Data Processing Corporation transfers data from ARJIS into the Crime Analysis Statistical System (CASS). It is through this system and analysis that the number of children who were victims of violent crimes as reported to law enforcement in San Diego County was obtained. The age categories of 0-11 and 12-17 were chosen based on the precedence set by national violent crime survey reports, varying etiological factors, and nature of the crimes involved. The numbers of victims ages 0-11 and 12-17 were divided by the population of children and youth ages 0-11 and 12-17, respectively, as applicable to each year. Each result was then multiplied by 10,000 for the yearly rates as presented below. Rates and confidence intervals (95% CI) were rounded up to the first decimal place. Victimization rates other than homicide may include more than one incident per child each year. The numbers of child homicide victims who resided in San Diego County during the years 1994 through 1999 are presented as a subset of the violent crime victimization data and are derived from death records. ARJIS is a regional information system and does not provide statistics for the state of California.

**Note:** Data for 1999 were updated from those reported in the 2000 Technical Supplement and data for 1997 and 1998 were omitted because they were determined to be incomplete.

### Data:

Number and rate of violent crime victimizations of children ages 0-11 in San Diego County, 1999 & 2000

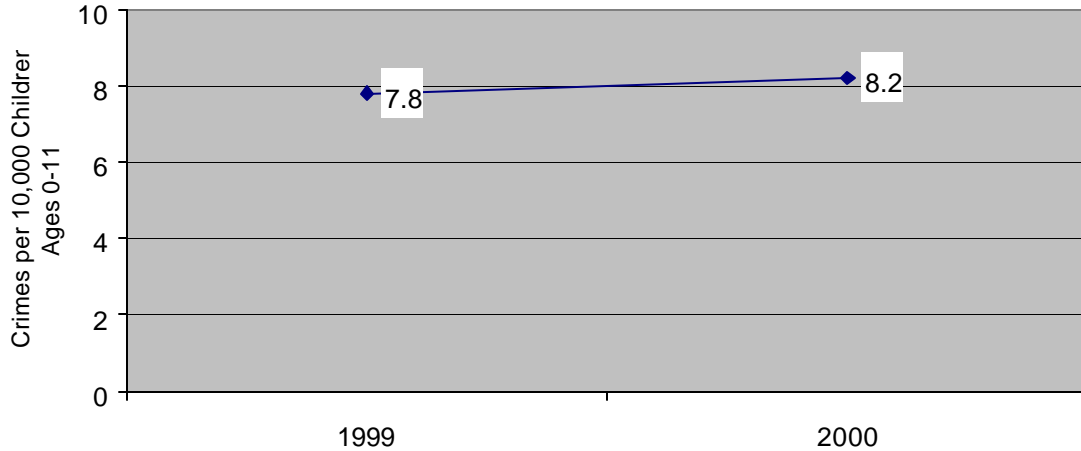
Year	Number and Rate of Violent Crime Victimization of Children in San Diego County, 1999 & 2000			
	Ages 0-11			
	No. of Victims	Population	Rate	95% CI
1999	410	528,870	7.8	7.0 – 8.5
2000	444	539,084	8.2	7.5 – 9.0

Rates are per 10,000 population ages 0-11.

Note: These data have been revised by San Diego Data Processing Corporation and are different from those reported in the 2000 Technical Supplement and Report Card.

Source: Automated Regional Justice Information System, San Diego Data Processing Corporation; San Diego County population estimates were obtained from SANDAG

**Rate of Violent Crime Victimization of Children Ages 0-11  
in San Diego County  
1999-2000**



Source: Automated Regional Justice Information System, San Diego Data Processing Corporation; San Diego County population estimates used in rate calculations were obtained from SANDAG

Number and rate of violent crime victimizations of youth ages 12-17 in San Diego County, 1999 & 2000

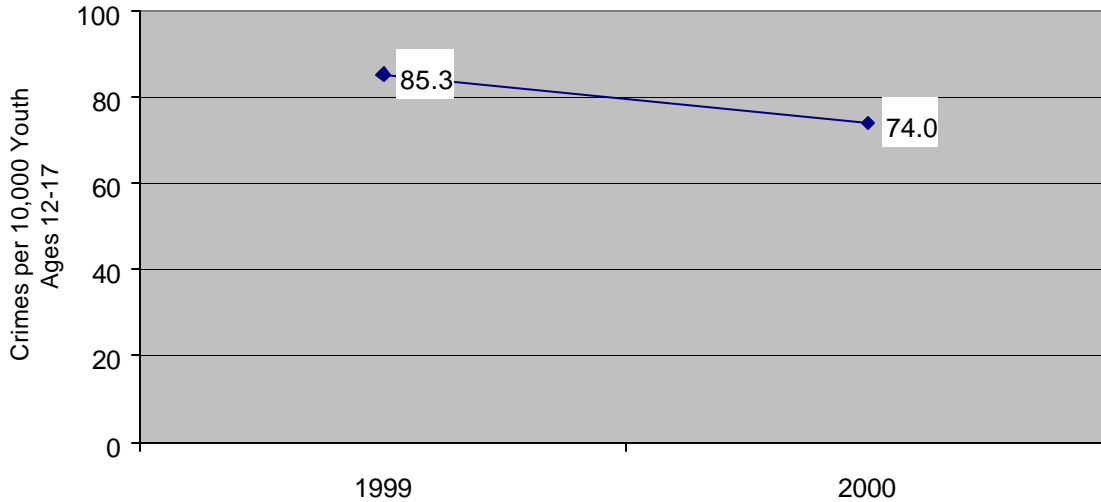
Year	Number and Rate of Violent Crime Victimizations of Youth in San Diego County, 1999 & 2000			
	Ages 12-17			
	No. of Victims	Population	Rate	95% CI
1999	1866	218,820	85.3	81.4 – 89.1
2000	1667	225,151	74.0	70.5 – 77.6

Rates are per 10,000 population ages 12-17.

Note: These data have been revised by San Diego Data Processing Corporation and are different from those reported in the 2000 Technical Supplement and Report Card

Source: Automated Regional Justice Information System, San Diego Data Processing Corporation; San Diego County population estimates were obtained from SANDAG

**Rate of Violent Crime Victimization of Youth Ages 12-17  
in San Diego County  
1999-2000**



Source: Automated Regional Justice Information System, San Diego Data Processing Corporation; San Diego County population estimates used in rate calculations were obtained from SANDAG

Number of San Diego County children, ages 0-17, who were the victims of homicide, 1994-1999

Year	Number of San Diego County Child Homicide Victims Ages 0-17
1994	20
1995	23
1996	22
1997	19
1998	13
1999	6

Note: No California comparison data were available for this measure.

## **Rate of Unintentional Injuries and Death Due to Unintentional Injuries of Children and Youth**

**Definition:** Number of unintentional injuries (requiring hospitalization) and deaths due to unintentional injuries among children and youth ages 0-18 per 100,000 children and youth ages 0-18 per year

**Sources:** County of San Diego, Health and Human Services Agency, Emergency Medical Services; California Department of Health Services, Office of Statewide Health Planning and Development, Hospital Discharge Dataset; California Department of Health Services, Center for Health Statistics, Vital Statistics Section, Death Statistical Master Files

**Methodology:** Unintentional injuries include injuries where there was no intent to harm including injuries sustained in motor vehicle, pedacycle or motorcycle crashes, or as a pedestrian involved in a crash; injuries as a result of sports or recreational activities, as well as falls, drowning, poisoning and fire. Children and youth discharged from non-federal acute care hospitals whose discharge summary includes an external cause of injury code as the reason for admission (excluding self-inflicted, assault and undetermined causes of injury) are included in the dataset. If a child or youth is treated for an injury, but it is not the reason for the admission, he or she is not defined as an injury case and is not included in the dataset. Repeat visits for the same injury are not included in the data, however, if a child or youth is hospitalized for two separate injuries in the same year, this will be counted as two cases. The injury dataset excludes children or youth that die during their hospital stay and these cases are counted only as deaths. The data include only California residents hospitalized in California and are stratified by county of residence (San Diego County). Death data also represent California and San Diego County residents (this is a revision from the 1999 technical supplement in which death data represented the place of injury occurrence and included residents and non-residents). Rates by race/ethnicity were averaged over the years 1996 through 1998 and are presented.

**Note:** Data for this measure have not been updated from those reported in the 2000 Technical Supplement and Report Card. More current HISS (hospitalization data) was not released by the state in time to be included in this report.

**Calculation:** The rate was calculated by adding the number of hospitalizations for unintentional injuries and deaths due to unintentional injuries among children and youth, ages 0-18, within a year. This number was divided by the population ages 0-18 in that year and that result was multiplied by 100,000 for the presented rate. Rates and corresponding confidence intervals (95% CI) were rounded up to the first decimal place. Rates were calculated for San Diego County and California residents.

**Data:**

Number and rate of hospitalized injuries and deaths due to unintentional injuries among children and youth in San Diego County, 1993-1998

Year	San Diego County Population, Ages 0-18	Unintentional Injuries* and Deaths** among San Diego County Children and Youth, Ages 0-18		
		Number	Rate	95% CI
1993	696,016	2,806	403.2	388.3 – 418.0
1994	709,126	2,816	397.1	382.5 – 411.8
1995	718,527	2,785	387.6	373.2 – 402.0
1996	729,341	2,585	354.4	340.8 – 368.1
1997	750,817	2,647	352.6	339.1 – 366.0
1998	770,274	2,674	347.2	334.0 – 360.3

\*Injuries requiring hospitalization

\*\* Deaths due to unintentional injuries

Rates are per 100,000 population, ages 0-18.

Note: Numbers and rates have been revised from the 1999 publication of this document.

Sources: County of San Diego, Health and Human Services Agency, Emergency Medical Services; State of California, Department of Health Services, Office of Statewide Health Planning and Development, Hospital Discharge Dataset; State of California, Department of Health Services, Center for Health Statistics, Vital Statistics Section, Death Statistical Master Files; San Diego County population estimates were obtained from SANDAG

Number and rate of hospitalized injuries and deaths due to unintentional injuries among children and youth in California, 1993-1998

Year	California Population, Ages 0-18	Unintentional Injuries* and Deaths** among California Children and Youth, Ages 0-18		
		Number	Rate	95% CI
1993	8,995,286	29,741	330.6	326.9 – 334.4
1994	9,155,615	29,624	323.6	319.9 – 327.2
1995	9,304,049	28,566	307.0	303.5 – 310.6
1996	9,449,296	28,040	296.7	293.3 – 300.2
1997	9,671,488	27,829	287.7	284.4 – 291.1
1998	9,879,154	28,011	283.5	280.2 – 286.9

\*Injuries requiring hospitalization

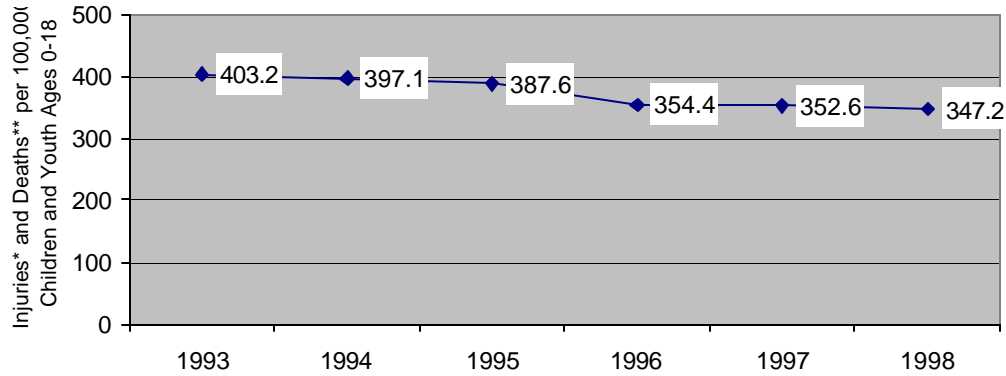
\*\* Deaths due to unintentional injuries

Rates are per 100,000 population, ages 0-18.

Note: Numbers and rates have been revised from the 1999 publication of this document.

Sources: County of San Diego, Health and Human Services Agency, Emergency Medical Services; State of California, Department of Health Services, Office of Statewide Health Planning and Development, Hospital Discharge Dataset; State of California, Department of Health Services, Center for Health Statistics, Vital Statistics Section, Death Statistical Master Files; California population estimates were obtained from the State of California, Department of Finance

**Rate of Unintentional Injuries\* and Deaths\*\* among Children and Youth  
in San Diego County: 1993-1998**

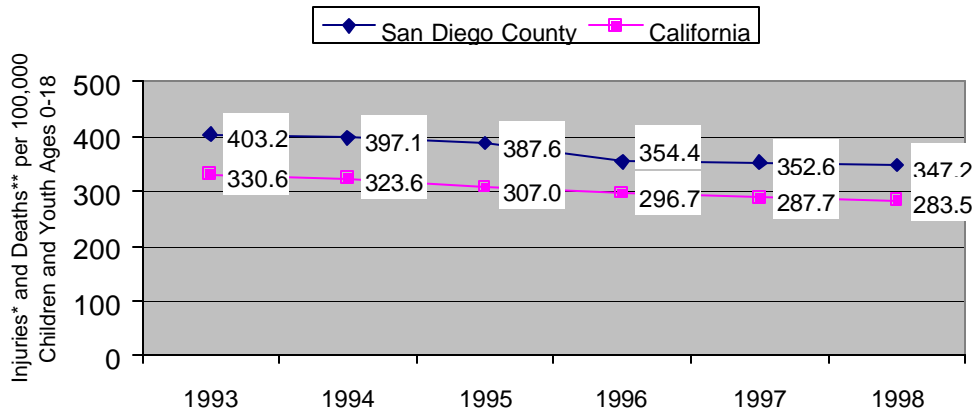


\*Injuries requiring hospitalization

\*\*Deaths due to unintentional injuries

Sources: County of San Diego, Health and Human Services Agency, Emergency Medical Services; State of California, Department of Health Services, Office of Statewide Health Planning and Development, Hospital Discharge Dataset; State of California, Department of Health Services, Center for Health Statistics, Vital Statistics Section, Death Statistical Master Files; San Diego County population estimates used in rate calculations were obtained from SANDAG

**Rate of Unintentional Injuries\* and Deaths\*\* among Children and Youth in San  
Diego County and California: 1993-1998**



\*Injuries requiring hospitalization

\*\*Deaths due to unintentional injuries

Sources: County of San Diego, Health and Human Services Agency, Emergency Medical Services; State of California, Department of Health Services, Office of Statewide Health Planning and Development, Hospital Discharge Dataset; State of California, Department of Health Services, Center for Health Statistics, Vital Statistics Section, Death Statistical Master Files; San Diego County population estimates used in rate calculations were obtained from SANDAG; California population estimates were obtained from the State of California, Department of Finance

Rate of unintentional injuries and deaths due to unintentional injuries (ages 0-18) in San Diego County and California by race/ethnicity, 3-year averages, 1996-1998

Race/ Ethnicity	Rate of Unintentional Injuries* and Deaths** (Ages 0-18) in San Diego County and California by Race/Ethnicity 1996-1998			
	San Diego County		California	
	3-yr. Avg. Rate	95% CI	3-yr. Avg. Rate	95% CI
Overall	351.3	337.9 – 364.7	289.2	285.9 – 292.6
White	346.2	327.3 – 365.2	313.4	307.9 – 318.9
Hispanic	340.4	317.9 – 362.9	260.8	255.7 – 265.9
Black	471.2	413.0 – 529.5	389.7	375.5 – 403.9
Asian/Other	327.5	285.7 – 369.4	235.7	226.7 – 244.6

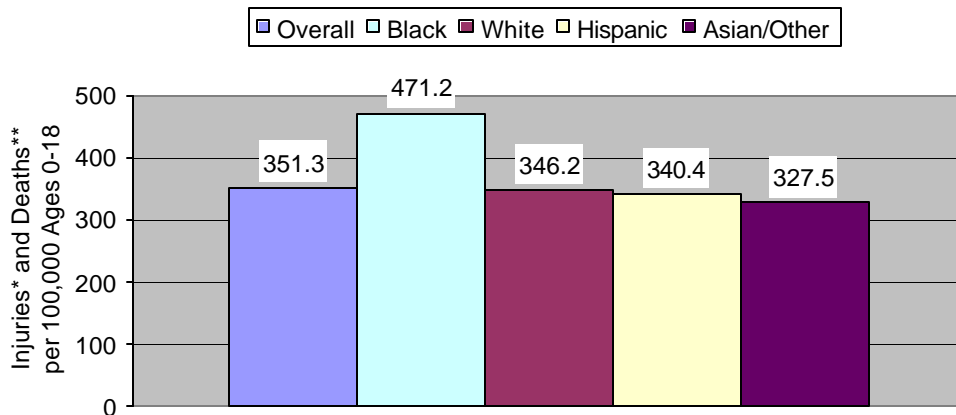
\*Injuries requiring hospitalization

\*\*Deaths due to unintentional injuries

Rates are per 100,000 population, ages 0-18, in each race/ethnicity.

Sources: County of San Diego, Health and Human Services Agency, Emergency Medical Services; State of California, Department of Health Services, Office of Statewide Health Planning and Development, Hospital Discharge Dataset; State of California, Department of Health Services Center for Health Statistics, Vital Statistics Section, Death Statistical Master Files; San Diego County population estimates used in rate calculations were obtained from SANDAG; California population estimates were obtained from the State of California, Department of Finance

**Rate of Unintentional Injury\* and Death\*\*  
of Children and Youth by Race/Ethnicity  
San Diego County, 1996-1998 Average**

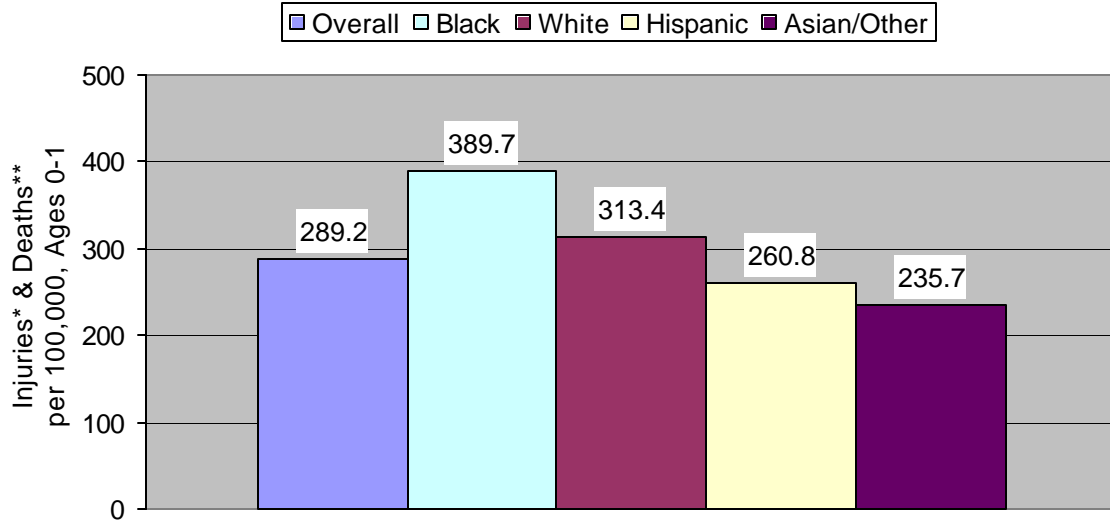


\*Injuries requiring hospitalization

\*\* Deaths due to unintentional injuries

Sources: County of San Diego, Health and Human Services Agency, Emergency Medical Services; State of California, Department of Health Services, Office of Statewide Health Planning and Development, Hospital Discharge Dataset; State of California, Department of Health Services, Center for Health Statistics, Vital Statistics Section, Death Statistical Master Files; San Diego County population estimates used in rate calculations were obtained from SANDAG

**Rate of Unintentional Injury\* and Death\*\*  
of Children and Youth by Race/Ethnicity  
California, 1996-1998 Average**



\*Injuries requiring hospitalization

\*\* Deaths due to unintentional injuries

Sources: County of San Diego, Health and Human Services Agency, Emergency Medical Services; State of California, Department of Health Services, Office of Statewide Health Planning and Development, Hospital Discharge Dataset; State of California, Department of Health Services, Center for Health Statistics, Vital Statistics Section, Death Statistical Master Files; California population estimates used in rate calculations were obtained from the State of California, Department of Finance

Note: Data are not available by Health and Human Services Agency regional areas.

## **Rate of Children and Youth Killed or Injured in Alcohol/Drug-Related Motor Vehicle Crashes**

**Definition:** Number of children and youth ages 0-15 and 16-20 who were killed or injured in motor vehicle crashes related to drugs or alcohol per 100,000 children and youth ages 0-15 and 16-20, respectively, per year

**Sources:** County of San Diego, Health and Human Services Agency, Emergency Medical Services; State of California, Department of California Highway Patrol, Information Services Unit; Statewide Integrated Traffic Records System

**Methodology:** Data from the Statewide Integrated Traffic Records System include the number of victims involved in alcohol/drug-related crashes that have died (no later than 30 days after the collision) or had severe injury, other visible injury or complaint of pain as reported by the highway patrol, law enforcement officers and emergency medical personnel. Those victims in the collisions include the driver or occupant of the motor vehicle(s), pedestrians or pedacyclists. The violation categories pertaining to the cause of the collisions include driving or bicycling under the influence of alcohol or drug or a pedestrian or “other” under the influence of alcohol or drug. The data used for analysis include alcohol/drug-related motor vehicle crashes occurring in San Diego County and California by location of occurrence, not residence.

**Calculation:** The total number of children ages 0-15 and youth ages 16-20 who have died, suffered severe injury, other visible injury or have complained of pain following an alcohol/drug-related motor vehicle collision during a calendar year was divided by the population of children ages 0-15 and youth ages 16-20, respectively, for that year. Each number was then multiplied by 100,000 and rounded up to the first decimal place for the rates presented. The 1997-1999 average rate for each region is presented for both age groups. Confidence intervals (95% CI) were calculated for each rate.

**Data:**

Number and rate of children ages 0-15 killed or injured in alcohol/drug-related motor vehicle crashes in San Diego County, 1996-1999

Year	Children Killed or Injured in Alcohol/Drug-Related Motor Vehicle Crashes in San Diego County, 1996-1999			
	Ages 0-15			
	No. of Victims	Population	Rate	95% CI
1996	132	649,417	20.3	16.9 – 23.8
1997	123	660,947	18.6	15.3 – 21.9
1998	135	677,560	19.9	16.6 – 23.3
1999	104	688,623	15.1	12.2 – 18.0

Rates are per 100,000 population, ages 0-15.

Sources: County of San Diego, Health and Human Services Agency, Emergency Medical Services; Statewide Integrated Traffic Records System; San Diego County population estimates were obtained from SANDAG

Number and rate of children ages 0-15 killed or injured in alcohol/drug-related motor vehicle crashes in California, 1996-1999

Year	Children Killed or Injured in Alcohol/Drug-Related Motor Vehicle Crashes in California, 1996-1999			
	Ages 0-15			
	No. of Victims	Population	Rate	95% CI
1996	2,138	8,204,204	26.1	25.0 – 27.2
1997	1,725	8,356,923	20.6	19.7 – 21.6
1998	1,769	8,526,605	20.7	19.8 – 21.7
1999	1,689	8,674,678	19.5	18.5 – 20.4

Rates are per 100,000 population, ages 0-15.

Sources: State of California, Department of California Highway Patrol, Information Services Unit; Statewide Integrated Traffic Records System; California population estimates were obtained from the State of California, Department of Finance

Number and rate of youth ages 16-20 killed or injured in alcohol/drug-related motor vehicle crashes in San Diego County, 1996-1999

Year	Youth Killed or Injured in Alcohol/Drug-Related Motor Vehicle Crashes in San Diego County, 1996-1999			
	Ages 16-20			
	No. of Victims	Population	Rate	95% CI
1996	366	181,537	201.6	181.0 – 222.2
1997	356	188,618	188.7	169.2 – 208.3
1998	361	191,739	188.3	168.9 – 207.7
1999	383	198,144	193.3	174.0 – 212.6

Rates are per 100,000 population, ages 16-20.

Sources: County of San Diego, Health and Human Services Agency, Emergency Medical Services; Statewide Integrated Traffic Records System; San Diego County population estimates were obtained from SANDAG

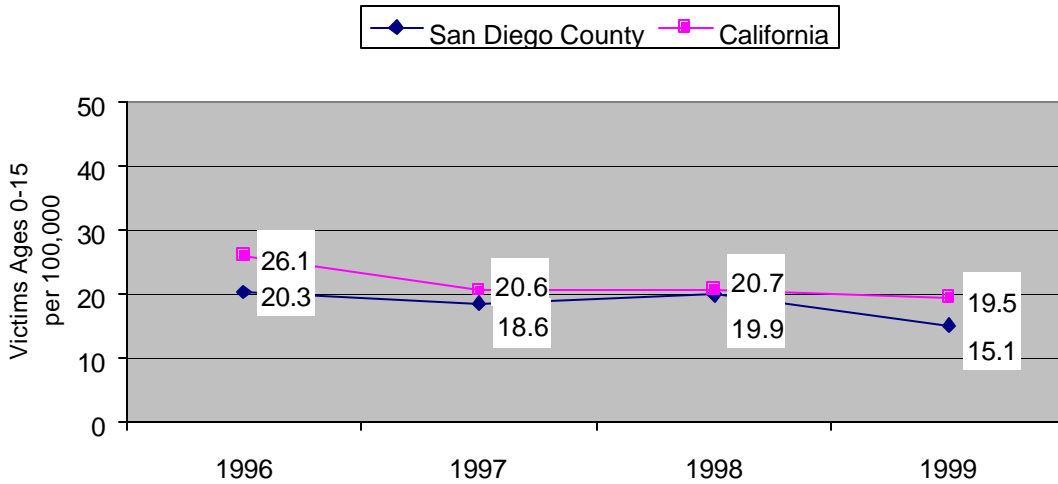
Number and rate of youth ages 16-20 killed or injured in alcohol/drug-related motor vehicle crashes in California, 1996-1999

Year	Youth Killed or Injured in Alcohol/Drug-Related Motor Vehicle Crashes in California, 1996-1999			
	Ages 16-20			
	No. of Victims	Population	Rate	95% CI
1996	4,160	2,069,592	201.0	194.9 – 207.1
1997	3,711	2,165,735	171.4	165.8 – 176.9
1998	3,755	2,228,524	168.5	163.1 – 173.9
1999	3,762	2,309,314	162.9	157.7 – 168.1

Rates are per 100,000 population, ages 16-20.

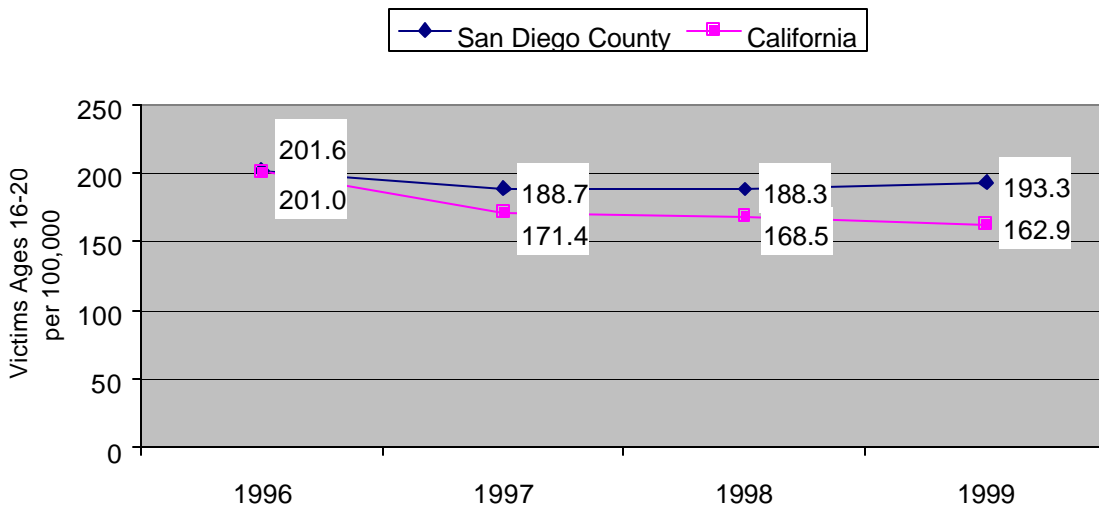
Sources: State of California, Department of California Highway Patrol, Information Services Unit; Statewide Integrated Traffic Records System; California population estimates were obtained from the State of California, Department of Finance

**Rate of Children Killed or Injured in Alcohol/Drug-Related Motor Vehicle Crashes in San Diego County and California: 1996-1999  
Ages 0-15**



Sources: County of San Diego, Health and Human Services Agency, Emergency Medical Services; State of California, Department of California Highway Patrol, Information Services Unit; Statewide Integrated Traffic Records System; San Diego County population estimates used in rate calculations were obtained from SANDAG; California population estimates were obtained from the State of California, Department of Finance

**Rate of Youth Killed or Injured in Alcohol/Drug-Related Motor Vehicle Crashes in San Diego County and California: 1996-1999  
Ages 16-20**



Sources: County of San Diego, Health and Human Services Agency, Emergency Medical Services; State of California, Department of California Highway Patrol, Information Services Unit; Statewide Integrated Traffic Records System; San Diego County population estimates used in rate calculations were obtained from SANDAG; California population estimates were obtained from the State of California, Department of Finance

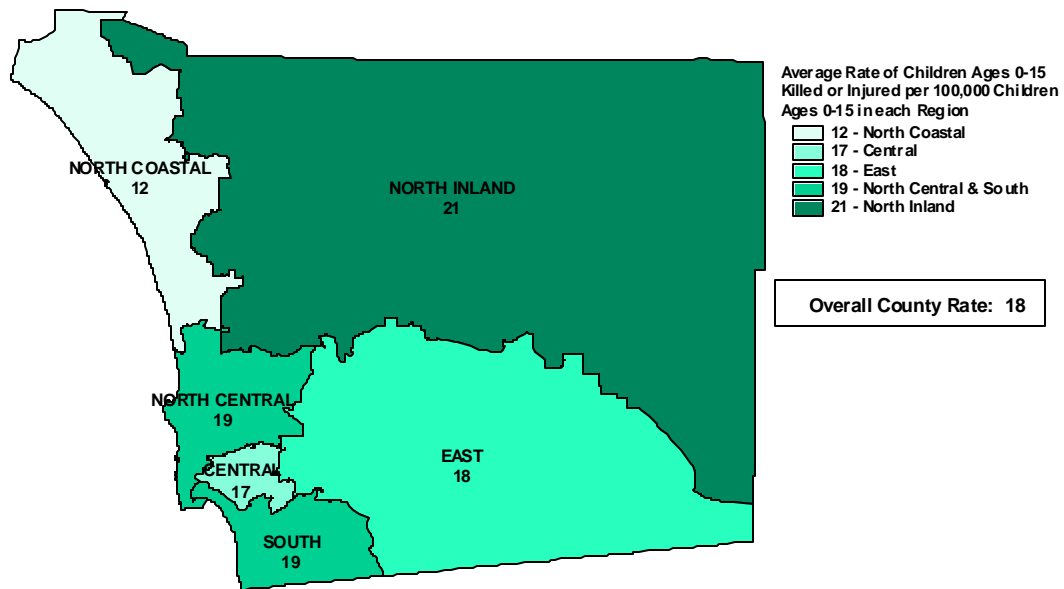
Rate of children ages 0-15 killed or injured in alcohol/drug-related motor vehicle crashes in San Diego County by Health and Human Services Agency regional areas, 3-year averages, 1997-1999

Rate of Children Ages 0-15 Killed or Injured in Alcohol/Drug-Related Motor Vehicle Crashes in San Diego County by Health and Human Services Agency Regional Areas 1997-1999		
Region	3-yr. Avg. Rate	95% CI
County Overall	17.9	14.7 – 21.0
North Coastal	12.5	5.9 – 19.0
North Inland	21.3	12.8 – 29.7
North Central	19.0	10.8 – 27.2
Central	17.1	9.9 – 24.3
East	18.3	10.4 – 26.3
South	19.2	10.7 – 27.6

Rates are per 100,000 population, ages 0-15.

Sources: County of San Diego, Health and Human Services Agency, Emergency Medical Services; Statewide Integrated Traffic Records System; San Diego County population estimates used in rate calculations were obtained from SANDAG

**Rate of Children Ages 0-15 Killed or Injured in Alcohol/Drug-Related Motor Vehicle Crashes in San Diego County by Health and Human Services Agency Regional Areas 1997-1999**



Note: Rates have been rounded.

Source: County of San Diego, Health and Human Services Agency, Emergency Medical Services; Statewide Integrated Traffic Records System; San Diego County population estimates used in rate calculations were obtained from SANDAG

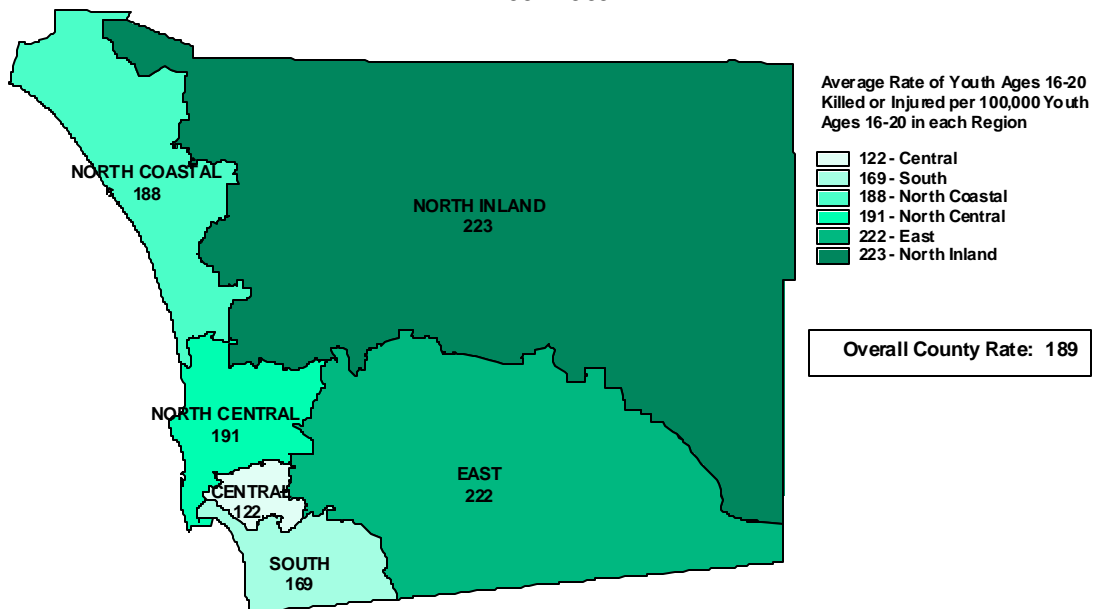
Rate of youth ages 16-20 killed or injured in alcohol/drug-related motor vehicle crashes in San Diego County by Health and Human Services Agency regional areas, 3-year averages, 1997-1999

Rate of Youth Ages 16-20 Killed or Injured in Alcohol/Drug-Related Motor Vehicle Crashes in San Diego County by Health and Human Services Agency Regional Areas: 1997-1999		
Region	3-yr. Avg. Rate	95% CI
Overall County	189.5	170.0 – 208.9
North Coastal	188.4	141.7 – 235.2
North Inland	223.3	171.2 – 275.5
North Central	191.0	146.2 – 235.8
Central	121.9	86.2 – 157.7
East	222.1	169.0 – 275.2
South	169.5	123.1 – 215.8

Rates are per 100,000 population, ages 16-20.

Sources: County of San Diego, Health and Human Services Agency, Emergency Medical Services; Statewide Integrated Traffic Records System; San Diego County population estimates used in rate calculations were obtained from SANDAG

**Rate of Youth Ages 16-20 Killed or Injured in Alcohol/Drug-Related Motor Vehicle Crashes in San Diego County by Health and Human Services Agency Regional Areas 1997-1999**



Note: Rates have been rounded.

Source: County of San Diego, Health and Human Services Agency, Emergency Medical Services; Statewide Integrated Traffic Records System; San Diego County population estimates used in rate calculations were obtained from SANDAG

Note: Racial/ethnic data were not available for this measure.

## EDUCATIONAL ACHIEVEMENT

### Percent of Students That Drop Out of High School Annually

**Definition:** Percent of those enrolled in grades 9-12 that have dropped out of school during one school year

**Sources:** California Department of Education, Educational Demographics Office, California Basic Educational Data System (CBEDS) accessed via the Internet at <http://www.cde.ca.gov>

**Methodology:** The California Department of Education defines a dropout as a person who meets the following criteria: a) was formerly enrolled in grades 9-12; b) has left school for 45 consecutive school days and has not enrolled in another public or private educational institution or school program; c) has not re-enrolled in the school; d) has not received a high school diploma or its equivalent; e) was under twenty-one years of age; f) was formerly enrolled in a school or program leading to a high school diploma or its equivalent. The one-year dropout rate represents students who drop out of public schools in the 9<sup>th</sup> through 12<sup>th</sup> grades, including students who drop out over the summer and out of continuation or alternative education programs.

**Calculation:** The one-year dropout rate is an “annual” or “event” dropout rate that is calculated from the dropout and enrollment counts from the same school year. The number of dropouts from grades 9 through 12 are divided by the number of students enrolled in grades 9 through 12 and un-graded secondary school. This number is multiplied by 100 and rounded up to the second decimal place for the percentages presented in tabular data. Percentages by race/ethnicity are averaged over school years 1997/98 through 1999/00. Confidence intervals (95% CI) were calculated for each rate.

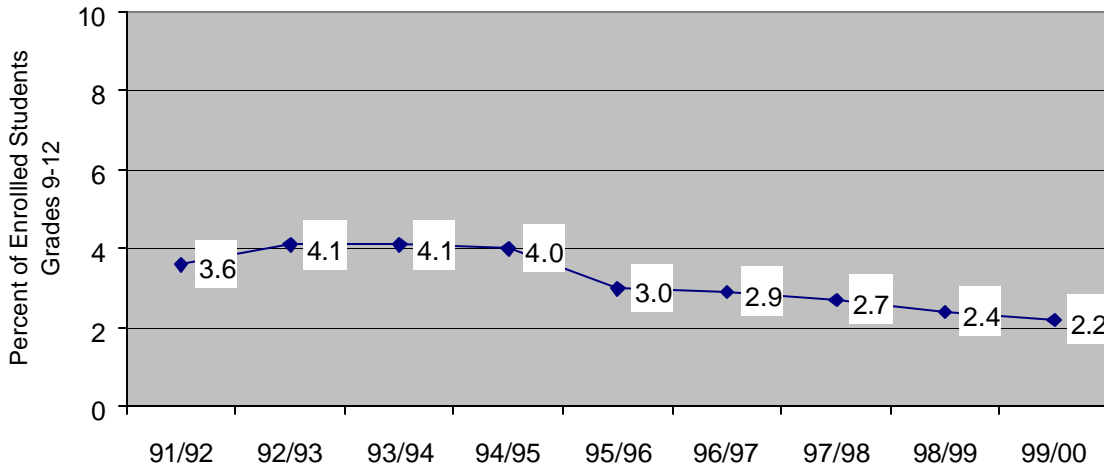
#### Data:

Dropouts as a percent of enrollment (grades 9-12) in San Diego County and California public schools, school years 1991/92 through 1999/00

School Year	Dropouts as a Percent of Enrollment (Grades 9-12) in Public Schools							
	San Diego County				California			
	Enrolled	Dropped	Percent	95% CI	Enrolled	Dropped	Percent	95% CI
1991/92	108,123	3,874	3.58	3.47 – 3.69	1,395,626	72,454	5.19	5.15 – 5.23
1992/93	109,673	4,517	4.12	4.00 – 4.24	1,411,260	70,276	4.98	4.94 – 5.02
1993/94	111,956	4,557	4.07	3.96 – 4.19	1,417,415	68,690	4.85	4.81 – 4.88
1994/95	114,488	4,554	3.98	3.87 – 4.09	1,453,241	64,451	4.44	4.40 – 4.47
1995/96	118,289	3,536	2.99	2.89 – 3.09	1,482,544	58,048	3.92	3.88 – 3.95
1996/97	123,569	3,626	2.93	2.84 – 3.03	1,558,149	51,746	3.32	3.29 – 3.35
1997/98	129,000	3,520	2.73	2.64 – 2.82	1,610,501	47,306	2.94	2.91 – 2.96
1998/99	132,897	3,132	2.36	2.28 – 2.44	1,659,030	46,470	2.80	2.78 – 2.83
1999/00	137,356	3,001	2.18	2.11 – 2.26	1,703,492	47,282	2.78	2.75 – 2.80

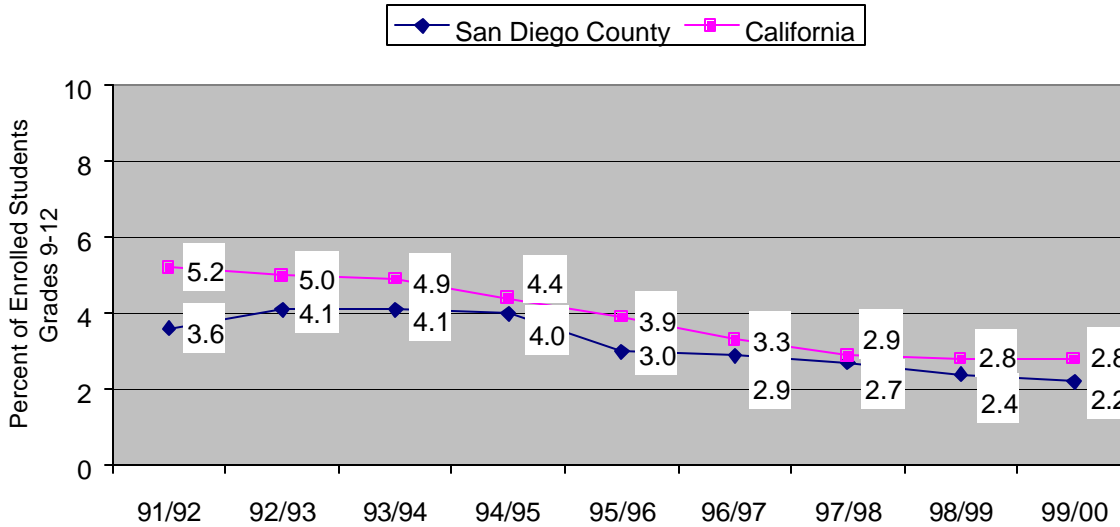
Sources: San Diego County Office of Education; California Department of Education, Educational Demographics Unit, California Basic Educational Data System

**Dropouts as a Percent of Enrollment in San Diego County  
Public Schools  
School Years 1991/92-1999/00**



Source: California Department of Education, Educational Demographics Unit, California Basic Educational Data System

**Dropouts as a Percent of Enrollment in San Diego County  
and California Public Schools  
School Years 1991/92-1999/00**



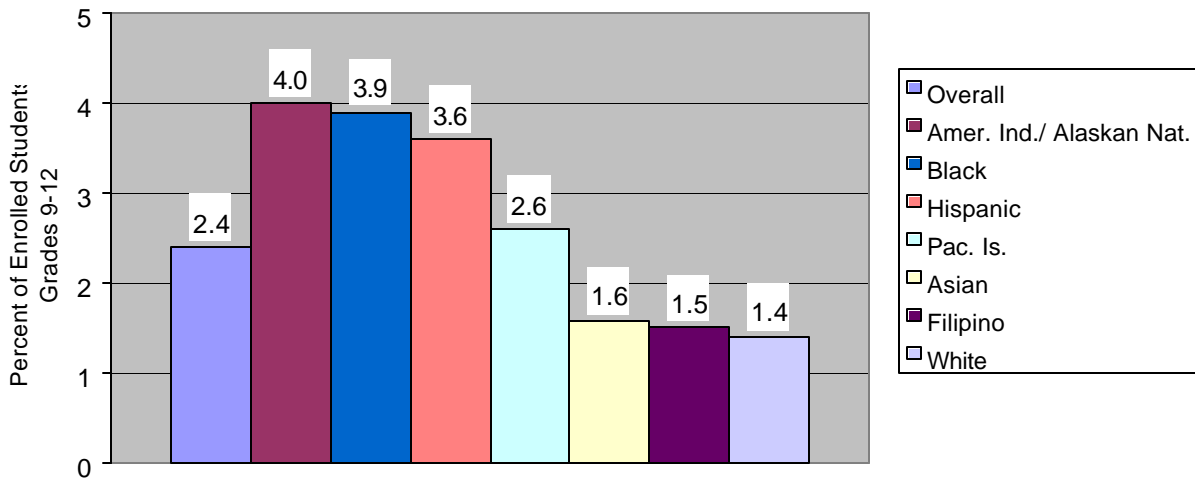
Sources: California Department of Education, Educational Demographics Unit, California Basic Educational Data System

Dropouts as a percent of enrollment (grades 9-12) in San Diego County and California public schools by race/ethnicity (percentages are of enrolled students within each race/ethnicity), 3-year average, school years 1997/98-1999/00

Race/Ethnicity	Dropouts as a Percent of Enrollment (Grades 9-12) in Public Schools by Race/Ethnicity, School Years 1997/98-1999/00			
	San Diego County		California	
	3 yr. Avg. Percentage	95% CI	3 yr. Avg. Percentage	95% CI
Overall	2.42	2.34 – 2.50	2.84	2.81 – 2.86
Amer. Ind./Alaskan Nat.	4.02	2.98 – 5.06	3.91	3.60 – 4.21
Asian	1.64	1.35 – 1.93	1.50	1.44 – 1.56
Pacific Islander	2.64	1.69 – 3.59	3.40	3.05 – 3.75
Filipino	1.51	1.23 – 1.78	1.91	1.78 – 2.03
Hispanic	3.57	3.40 – 3.75	3.95	3.90 – 4.00
Black	3.92	3.55 – 4.29	4.55	4.44 – 4.66
White	1.44	1.34 – 1.53	1.77	1.74 – 1.80

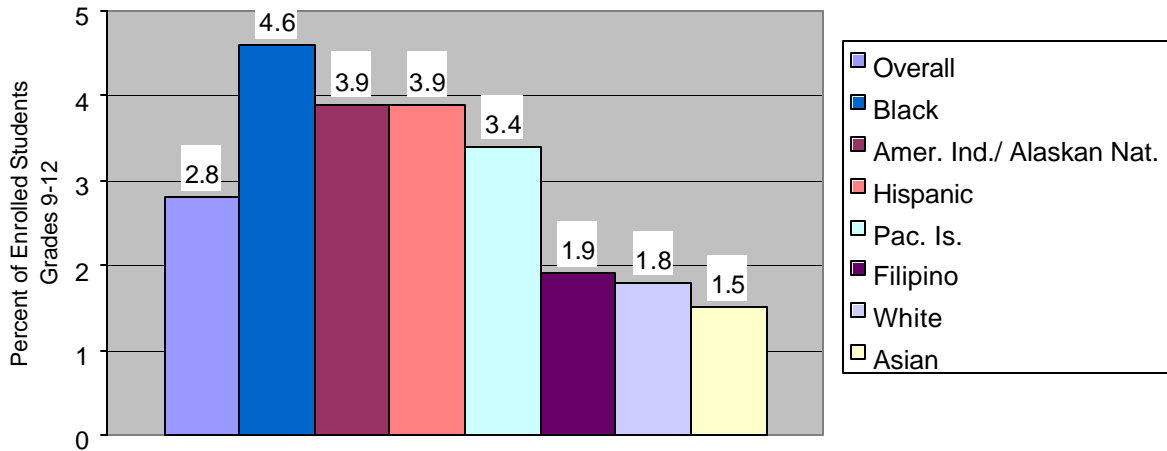
Sources: California Department of Education, Educational Demographics Unit, California Basic Educational Data System

**High School Dropouts as a Percent of Enrollment by Race/Ethnicity in San Diego County 1997/98 - 1999/00 Average**



Sources: California Department of Education, Educational Demographics Unit, California Basic Educational Data System

**High School Dropouts as a Percentage of Enrollment  
by Race/Ethnicity in California  
1997/98 - 1999/00 Average**



Sources: California Department of Education, Educational Demographics Unit, California Basic Educational Data System

Note: Data are not available by Health and Human Services Agency regional areas.

## Percent of Students Attending School Per Day

**Definition:** Average percent of public school students enrolled in kindergarten through 12<sup>th</sup> grade that attend school each instructional day in one school year

**Sources:** San Diego County Office of Education; California Department of Education (CDE) Form No. J-18/19; California Basic Educational Data System (CBEDS); California Department of Education School District Report Form ADA for Excused Absences

**Methodology/Calculation:** California school districts report attendance to the California Department of Education three times during a school year. Attendance is reported based on average daily attendance (ADA), which is computed by adding together the days each pupil attended school and dividing this sum by the number of days school was actually taught during the applicable reporting period. During the school years of 1994/95 through 1997/98, ADA included excused absences. Beginning with the 1998/99 school year, excused absences were excluded from ADA. ADA is now calculated on the basis of actual attendance. In addition to reporting attendance, school districts take a count of the student enrollment on a particular day in October of each school year to report enrollment on the California Basic Educational Data System (CBEDS) report.

The percent of students attending school each day is derived by dividing average daily attendance (ADA) at the second reporting period (P2) by the total CBEDS enrollment. The P2 reporting period includes attendance through the last full school month ending on or before April 15<sup>th</sup>, which is approximately the 135<sup>th</sup> day of school (excused absences were subtracted from ADA to determine the number of days students were actually present in the classroom for the 1994/95 through 1997/98 school years). Percentages were rounded to the first decimal place.

### Data:

Average percent of public school students enrolled in kindergarten through 12<sup>th</sup> grade that attend school per day in San Diego County, school years 1994/95 – 1999/00

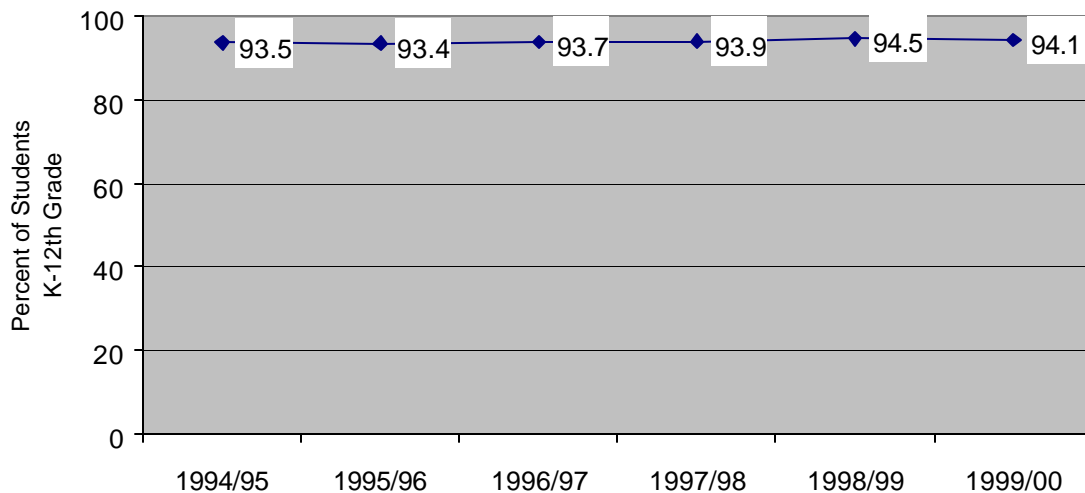
San Diego County Public Schools, Grades K-12				
School Year	P2ADA*	Excused Absences	October Enrollment	Attendance
1994/95	415,047	16,899	425,833	93.5%
1995/96	425,655	18,820	435,544	93.4%
1996/97	437,061	18,273	446,968	93.7%
1997/98	447,393	17,581	457,858	93.9%
1998/99	441,519	N/A	467,355	94.5%
1999/00	451,672	N/A	480,017	94.1%

\* Average daily attendance (ADA) at the second reporting period (P2)

Note: Beginning in school year 1998/99, excused absences are no longer included in ADA.

Sources: San Diego County Office of Education; California Department of Education (CDE) Form No. J-18/19; California Basic Educational Data System (CBEDS); California Department of Education School District Report Form ADA for Excused Absences

**Average Percent of Public School Students Attending School  
Per Day in San Diego County  
School Years 1994/95 - 1999/00**



Sources: San Diego County Office of Education; California Department of Education (CDE) Form No. J-18/19; California Basic Educational Data System (CBEDS); California Department of Education School District Report Form ADA for Excused Absences

Note: Neither California data or San Diego County racial/ethnic data are available for this measure. Data are not available by Health and Human Services Agency regional areas.

## Percent of Students Taking the Stanford-9 Test that Scored At or Above the 50<sup>th</sup> NPR in Reading

**Definition:** Percent of public school students that took the Stanford Achievement Test, Ninth Edition, Form T (SAT-9) in grades 3, 8 and 11, respectively, that scored at or above the 50<sup>th</sup> national percentile rank in reading

**Source:** California Department of Education, Standardized Testing and Reporting Program accessed via the Internet at <http://star.cde.ca.gov/star99/index.html>

**Methodology:** California's Standardized Testing and Reporting (STAR) program was authorized by Senate Bill (SB 376) in October 1997. The SAT-9 became the designated test for this program in November 1997 and was first administered statewide in Spring 1998. Public schools in California are required to test all students in grades 2 through 11. Testing of basic academic skills such as reading using this standardized test allows comparisons to be made to a national sample of students and helps the public evaluate the achievement of students and schools. The percent of students in each grade who scored at or above the 50<sup>th</sup> national percentile rank (NPR) in reading indicates the percent of students whose reading scores would place them in the top half of students tested nationally. Results represent all students including those of limited English proficiency as well as those who are economically disadvantaged. Results for San Diego County and California are compared. Results are also presented by race/ethnicity as 3-year (1998-2000) averages. Results for 2000 are preliminary and subject to revision; 1998 and 1999 results are final.

**Note:** Year 2000 data were included in trend line graphs in the previous Technical Supplement and Report Card. Therefore this report has not been updated with more current data. However, race/ethnicity data have been updated to include year 2000 data in the 3-year average rate.

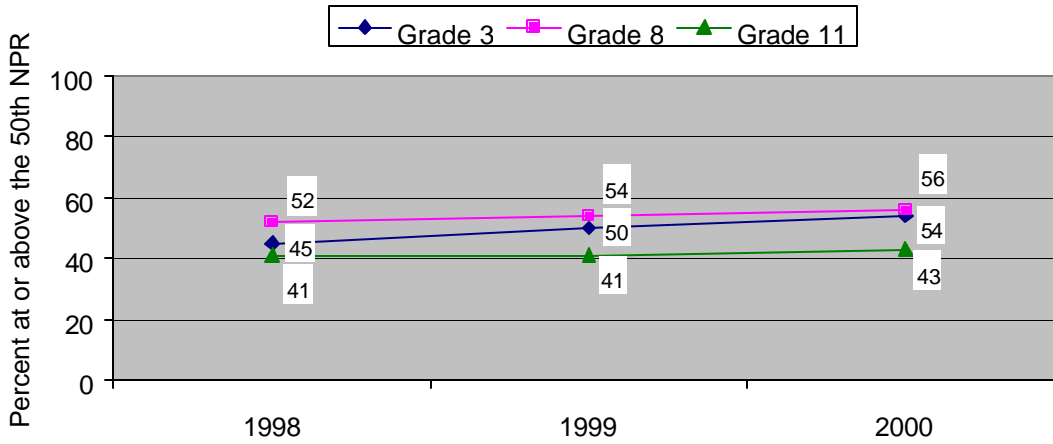
### Data:

Percent of students taking the SAT-9 that scored at or above the 50<sup>th</sup> national percentile rank in reading, grades 3, 8 and 11, San Diego County and California 1998 - 2000

Grade	SAT-9 Results Percent of Students Scoring at or Above the 50 <sup>th</sup> NPR in Reading					
	San Diego County			California		
	1998	1999	2000	1998	1999	2000
3	45	50	54	38	41	44
8	52	54	56	46	47	49
11	41	41	43	36	35	36

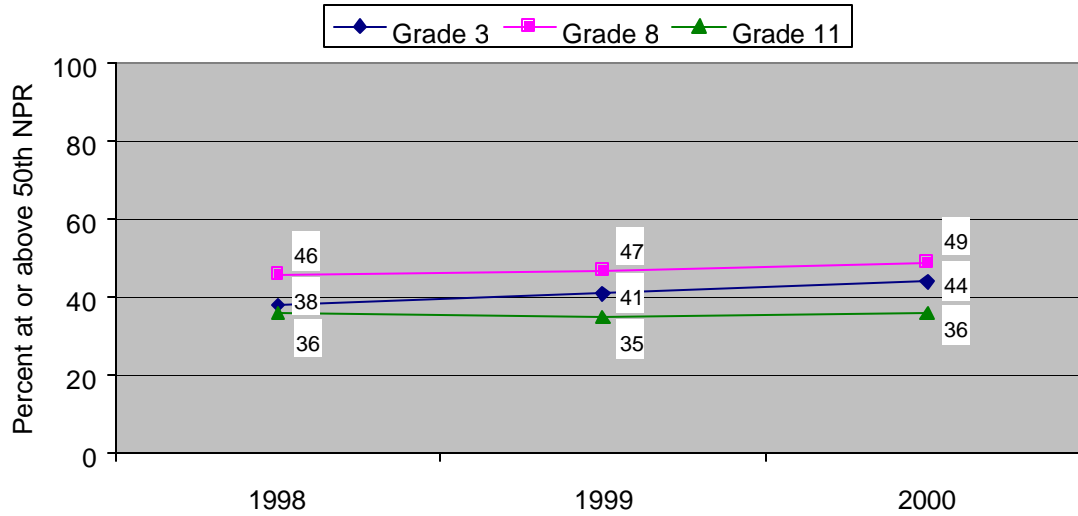
Source: California Department of Education, Standardized Testing and Reporting Program

**Percent of Students Taking the SAT- 9 that  
Scored At or Above the 50th National Percentile Rank in Reading  
San Diego County: 1998-2000**



Source: California Department of Education, Standardized Testing and Reporting Program

**Percent of Students Taking the SAT- 9 that  
Scored at or above the 50th National Percentile Rank in Reading  
California: 1998-2000**



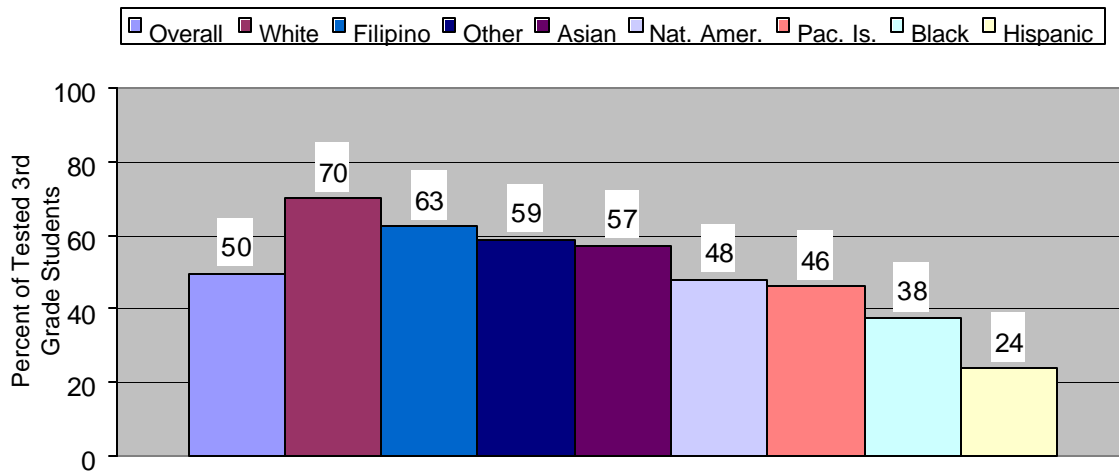
Source: California Department of Education, Standardized Testing and Reporting Program

Percent of students taking the SAT-9 that scored at or above the 50<sup>th</sup> national percentile rank in reading by race/ethnicity, grades 3, 8 and 11, San Diego County, 1998-2000 average

Race/Ethnicity	SAT-9 Results Percent of Students Scoring at or Above the 50 <sup>th</sup> NPR in Reading By Race/Ethnicity in San Diego County, 1998-2000 Average		
	Grade 3	Grade 8	Grade 11
Overall	50	54	42
White (Not Hispanic Origin)	70	74	58
Hispanic Latino	24	30	22
African/African American	38	39	23
Asian/Asian American	57	56	39
Pacific Islander	46	46	28
Filipino/Filipino American	63	61	39
Amer Ind. or Alaskan Nat.	48	49	37
Other	59	52	40

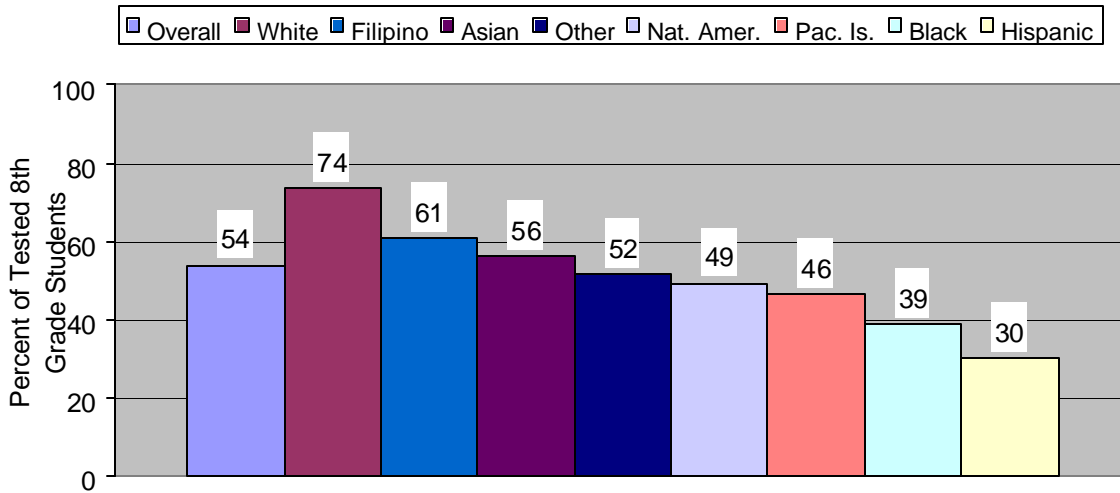
Source: California Department of Education, Standardized Testing and Reporting Program

**Percent Scoring At or Above the 50th National Percentile Rank  
in Reading by Race/Ethnicity - 3rd Grade  
San Diego County, 1998-2000 Average**



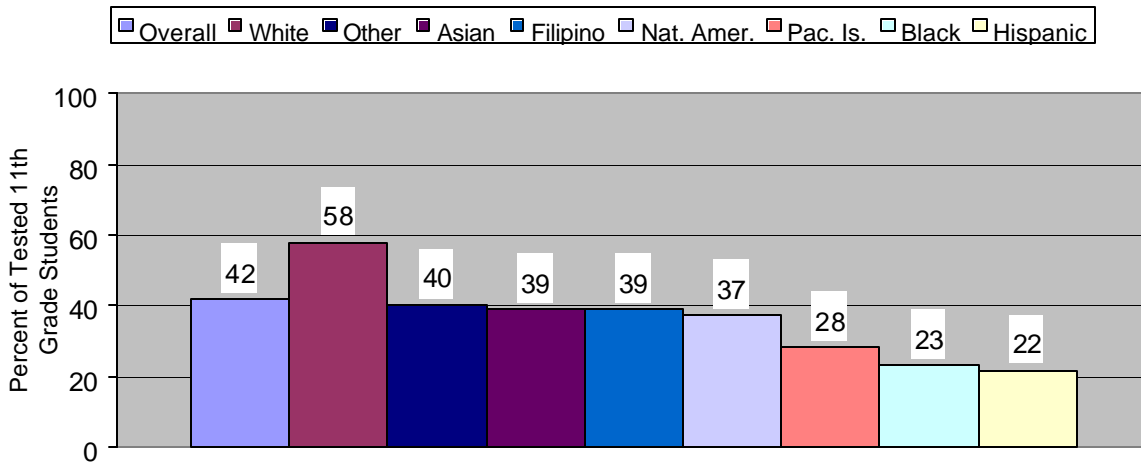
Source: California Department of Education, Standardized Testing and Reporting Program

**Percent Scoring At or Above the 50th National Percentile Rank  
in Reading by Race/Ethnicity - 8th Grade  
San Diego County, 1998-2000 Average**



Source: California Department of Education, Standardized Testing and Reporting Program

**Percent Scoring At or Above the 50th National Percentile Rank  
in Reading by Race/Ethnicity - 11th Grade  
San Diego County, 1998-2000 Average**



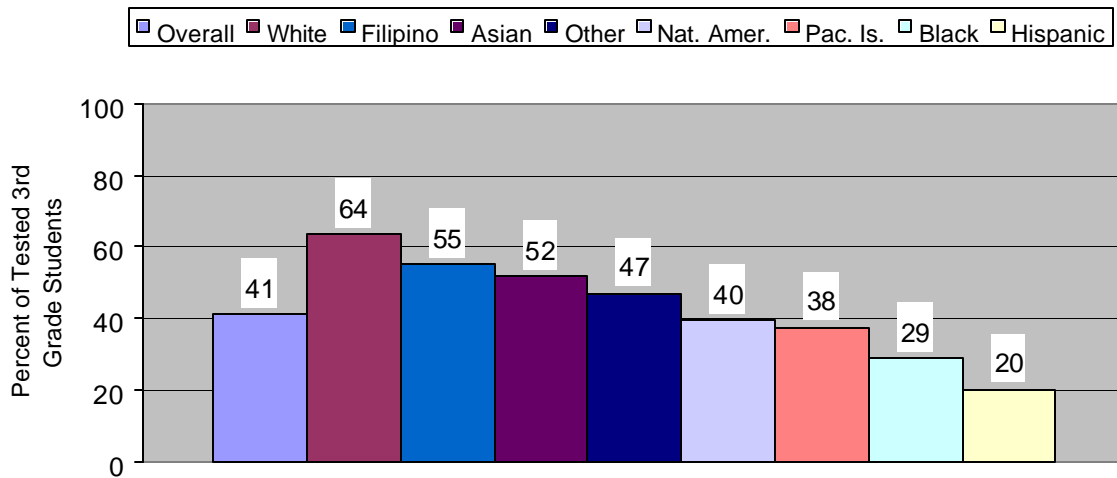
Source: California Department of Education, Standardized Testing and Reporting Program

Percent of students taking the SAT-9 that scored at or above the 50<sup>th</sup> national percentile rank in reading by race/ethnicity, grades 3, 8 and 11, California, 1998-2000 average

Race/Ethnicity	SAT-9 Results Percent of Students Scoring at or Above the 50 <sup>th</sup> NPR in Reading By Race/Ethnicity in California, 1998-2000 Average		
	Grade 3	Grade 8	Grade 11
Overall	41	47	36
White (Not Hispanic Origin)	64	68	53
Hispanic Latino	20	26	17
African/African American	29	32	20
Asian/Asian American	52	56	43
Pacific Islander	38	41	26
Filipino/Filipino American	55	56	35
American Ind. or Alaskan Nat.	40	44	32
Other	47	45	34

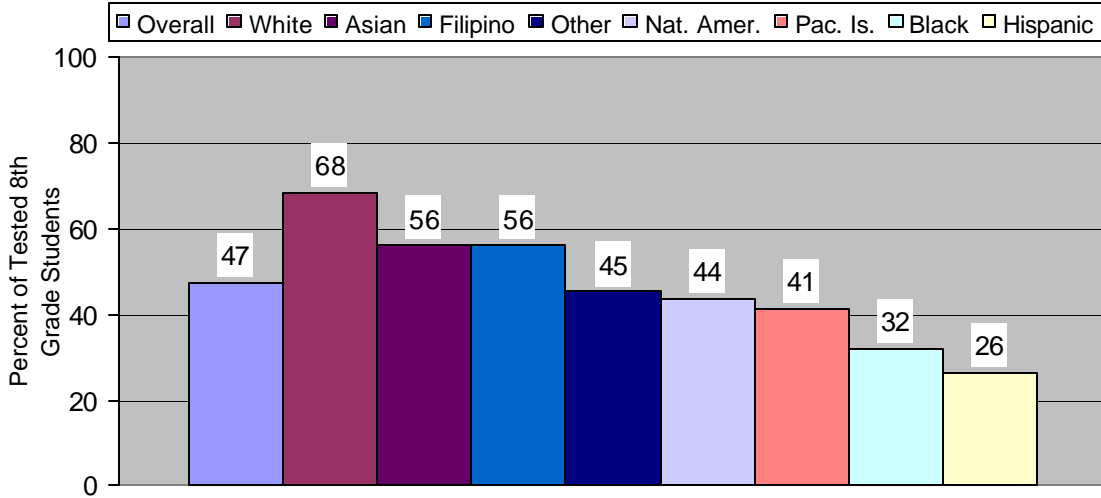
Source: California Department of Education, Standardized Testing and Reporting Program

**Percent Scoring At or Above the 50th National Percentile Rank  
in Reading by Race/Ethnicity - 3rd Grade  
California, 1998-2000 Average**



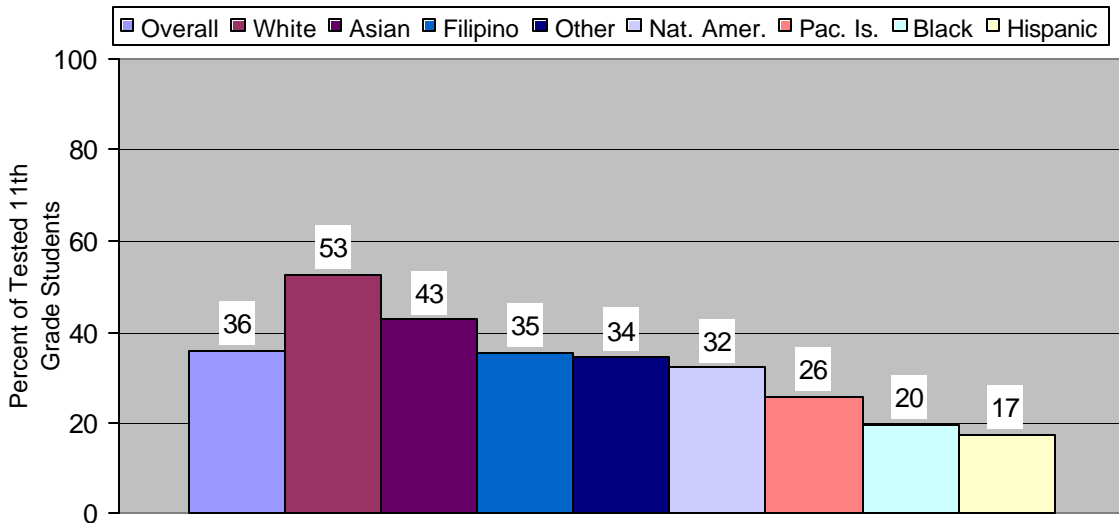
Source: California Department of Education, Standardized Testing and Reporting Program

**Percent Scoring At or Above the 50th National Percentile Rank in Reading by Race/Ethnicity - 8th Grade  
California, 1998-2000 Average**



Source: California Department of Education, Standardized Testing and Reporting Program

**Percent Scoring At or Above the 50th National Percentile Rank in Reading by Race/Ethnicity - 11th Grade  
California, 1998-2000 Average**



Source: California Department of Education, Standardized Testing and Reporting Program

Note: Data are not available by Health and Human Services Agency regional areas.

## Percent of Public High School Seniors that Have Taken the SAT

**Definition:** Percent of public high school seniors that have taken the Scholastic Assessment Test either as a junior or senior

**Sources:** California Department of Education, Office of Policy and Evaluation, Education Planning and Information Center accessed via the Internet at <http://www.cde.ca.gov/ope/epic/sat>; San Diego County Office of Education

**Methodology:** The Scholastic Assessment Test (SAT) is designed to measure the verbal and mathematical reasoning abilities of students before they enter college. These abilities are related to the successful performance of students in college. Students participate in testing as juniors or seniors in high school. Even when students take the test as juniors, their results are included with their graduation class. Furthermore, the percent of test takers is based on the October enrollment of students in grade 12 of the school year and the number of students for whom valid test results are available. For example, the 1997 percentage of test takers represents students enrolled as seniors in October of 1996. Those taking the test are self-selected, that is, the test is generally taken by students who need the results as part of the admission requirements of a particular college or university that they wish to attend. San Diego County and California percentages represent students from public schools only. Percentages and confidence intervals (95% CI) have been rounded up to the first decimal place.

### Data:

Percent of public high school seniors that have taken the Scholastic Assessment Test, San Diego County, 1995-2000

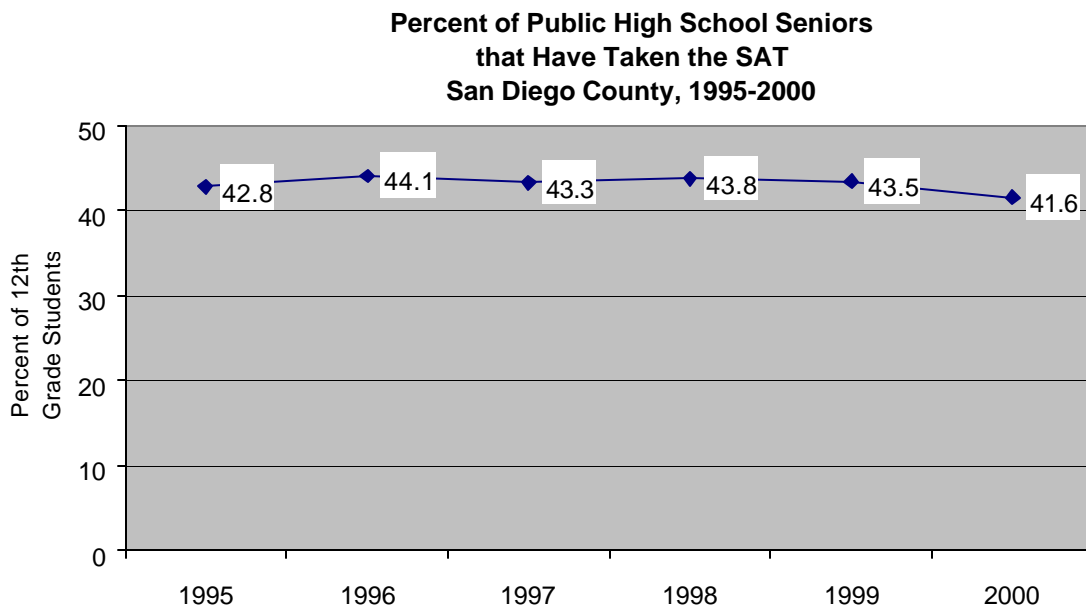
Year	Percent of Public High School Seniors that Have Taken the SAT, San Diego County, 1995-2000			
	12 <sup>th</sup> Grade Enrollment	Tested	Percent	95% CI
1995	22,135	9,463	42.8	42.1 – 43.4
1996	22,141	9,774	44.1	43.5 – 44.8
1997	23,199	10,036	43.3	42.6 – 43.9
1998	24,684	10,804	43.8	43.2 – 44.4
1999	25,998	11,320	43.5	42.9 – 44.2
2000	28,552	11,880	41.6	41.0 – 42.2

Sources: California Department of Education, Office of Policy and Evaluation, Education Planning and Information Center; San Diego County Office of Education

Percent of public high school seniors that have taken the Scholastic Assessment Test, California, 1995-2000

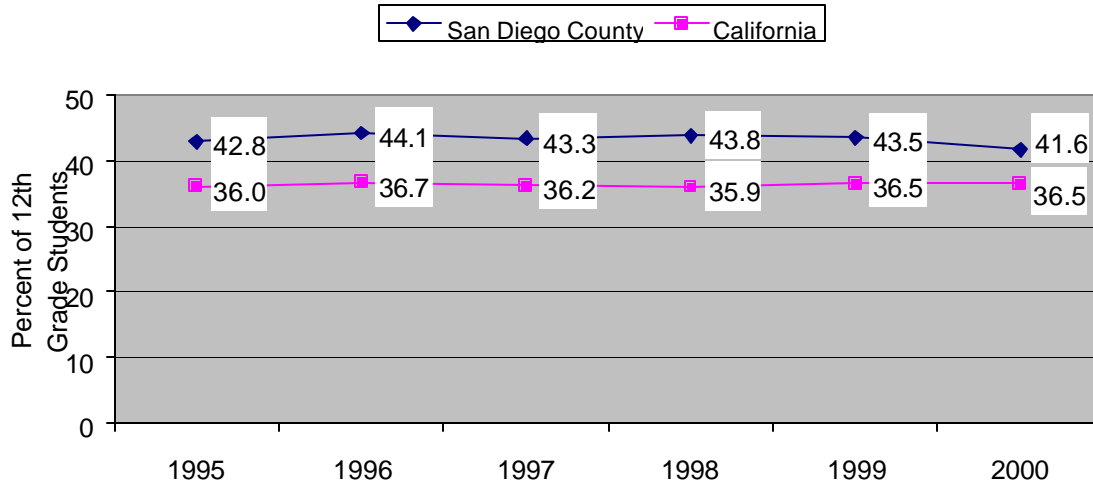
Year	Percent of Public High School Seniors that Have Taken the SAT, California, 1995-2000			
	12 <sup>th</sup> Grade Enrollment	Tested	Percent	95% CI
1995	285,132	102,782	36.0	35.9 – 36.2
1996	287,428	105,448	36.7	36.5 – 36.9
1997	298,669	108,210	36.2	36.1 – 36.4
1998	317,595	113,968	35.9	35.7 – 36.1
1999	334,852	122,359	36.5	36.4 – 36.7
2000	347,813	126,786	36.5	36.3 – 36.6

Sources: California Department of Education, Office of Policy and Evaluation, Education Planning and Information Center; San Diego County Office of Education



Sources: California Department of Education, Office of Policy and Evaluation, Education Planning and Information Center; San Diego County Office of Education

**Percent of Public High School Seniors  
that Have Taken the SAT  
San Diego County and California, 1995-2000**



Sources: California Department of Education, Office of Policy and Evaluation, Education Planning and Information Center; San Diego County Office of Education

Note: The race/ethnicity of test-takers was missing for a significant percentage of students; therefore, the data do not provide an accurate representation of test takers in each racial/ethnic category. Data are not available by Health and Human Services Agency regional areas.

**DEMOGRAPHIC DATA**

Population by Race/Ethnicity,  
All Ages,  
United States, California, and San Diego County, 2000

Race/Ethnicity	United States		California		San Diego County	
	Number	Percent	Number	Percent	Number	Percent
Overall	281,421,906	100.0	33,871,648	100.0	2,813,833	100.0
White	194,552,774	69.1	15,816,790	46.7	1,548,833	55.1
Hispanic	35,305,818	12.5	10,966,556	32.4	750,965	26.7
Black/ African Am.	33,947,837	12.1	2,181,926	6.4	154,487	5.5
Am. Indian/ Alaskan Nat.	2,068,883	0.7	178,984	0.5	15,253	0.5
Asian	10,123,169	3.6	3,648,860	10.8	245,297	8.7
Hawaiian/ Other PI	353,509	0.1	103,736	0.3	12,164	0.4
Some other race	467,770	0.2	71,681	0.2	5,822	0.2
Two or more races	4,602,146	1.6	903,115	2.7	81,012	2.9

Source: United States population estimates from U.S. Census Bureau, Census 2000 Redistricting Data (P.L. 94-171) Summary File for states; California and San Diego County population estimates from State of California, Department of Finance, Demographic Research Unit, California State Census Data Center, Census 2000 (P.L. 94-171)

Population by Race/Ethnicity,  
Under age 18,  
United States, California, and San Diego County, 2000

Race/Ethnicity	United States		California		San Diego County	
	Number	Percent	Number	Percent	Number	Percent
Overall	72,293,812	100.0	9,249,829	100.0	723,661	100.0
White	44,027,087	60.9	3,222,858	34.8	299,201	41.3
Hispanic	12,342,259	17.1	4,050,825	43.8	275,446	38.1
Black/ African Am.	10,610,264	14.7	653,820	7.1	47,259	6.5
Am. Indian/ Alaskan Nat.	685,911	0.9	49,112	0.5	3,953	0.5
Asian	2,420,274	3.3	855,747	9.3	56,498	7.8
Hawaiian/ Other PI	109,499	0.2	31,806	0.3	3,290	0.5
Some other race	192,326	0.3	24,579	0.3	2,107	0.3
Two or more races	1,906,192	2.6	361,082	3.9	35,907	5.0

Source: United States, California, and San Diego County population estimates from Annie E. Casey Foundation, KIDS COUNT Census Data Online, Census 2000

**For inquiries regarding this Technical Supplement, please contact:**

**Dana Morgan, MSW  
Center for Child Health Outcomes  
Children's Hospital and Health Center, San Diego  
MC 5053  
3020 Children's Way  
San Diego, CA 92123-4282  
[dmorgan@chsd.org](mailto:dmorgan@chsd.org)**

*Telephone inquiries regarding this project should be directed to:  
County of San Diego Health and Human Services Agency  
(619) 692-8828*